

**1600 Everman Parkway  
Fort Worth, TX 76140**

**FOR  
SALE**

## **COMMERCIAL/RESIDENTIAL LAND**



**11.8 Acres +/-  
Zoned E-Commercial**

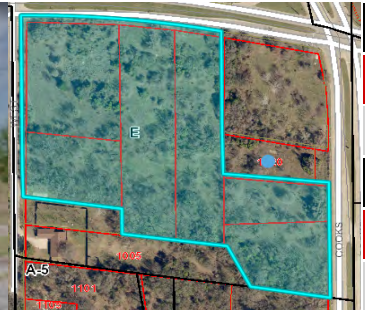
Located on the Everman-  
Fort Worth line.

1.3 miles east of I-35 &  
3.2 miles south of  
I-20 (Loop 820)

Excellent opportunity for  
a variety of businesses:  
retail, medical, office,  
and residential.

Good visibility located  
next to the new Everman  
ISD complex.

**Priced at \$1.00/psf**



**TROJAN**  
COMMERCIAL REAL ESTATE LLC

Contact:  
Tim Williams  
• Office: 817-632-6252 • Cell: 817-729-1205 •  
twilliams@trojancre.com

Trojan Commercial Real Estate • 3228 Collinsworth St. Fort Worth, Tx 76107 • 817-632-6252 • www.trojancre.com

The data contained here in was obtained from sources deemed to be reliable, but is in no way warranted by Trojan Commercial Real Estate, LLC. The property is offered subject to errors, omissions, change in price and/or terms or removal from the market without notice. Trojan Commercial Real Estate, LLC has not inspected or investigated this property for potential environmental problems or compliance with the American Disabilities Act.