

# ENERGY MANAGEMENT AND SUSTAINABILITY

Stages of Energy Management and Sustainability workflow.

## Introduction

1

- Get familiar with the company.
- Learn about the facility, operations, personnel and decision makers and teams.
- Understand business goals and strategies.
- Establish projects' criteria (cost, time, safety, effort).



2

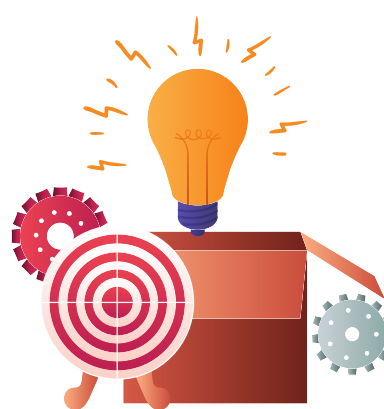
## Identification

- Review energy data and bills.
- Conduct a facility walkthrough to identify opportunities.
- Run a energy metrics analysis.
- Benchmarking
- Issue report with the identified opportunities savings and cost.

## Intention

3

- Select energy projects that meet the criteria.
- Conduct further energy audits and metering.
- Create an energy and carbon reduction plan.
- Produce an energy and carbon dashboard.
- Investigate new technology.
- Generate best practice guideline.
- File for energy incentives and grants..



4

## Implementation

- Implement energy projects.
- Manage projects from start to finish.
- Tracking and measuring results (energy and carbon).
- Continually improve energy management
- Reporting final results.

