

Heavy Duty Jump Starter 1400AMP 100PSI Compressor

Product Code : HH607

IMPORTANT:

This product has been carefully engineered and manufactured to give you dependable operation. Prior to use, please ensure that you read and understand all warnings, cautions and instructions included in this instruction manual, and those published by your vehicle battery manufacturer and manufacturer of any device intended to be used with this unit. Please retain this manual for future reference.

FEATURES:

- Heavy Duty Jump Starter
- 100 PSI High flow air compressor
- 12V DC Power Port
- LED work light
- USB 5V 2.1A

TECHNICAL SPECIFICATIONS

Internal battery:	12V 22Ah rechargeable sealed lead acid battery
Compressor: Max.	100PSI
12V output socket:	Max. 10A
LED work light:	White LEDs
USB:	5V 2.1A
Charging time AC charger:	Approximately 40 hours
Charging time DC charger:	Approximately 24 hours

EXPLANATION OF SYMBOLS



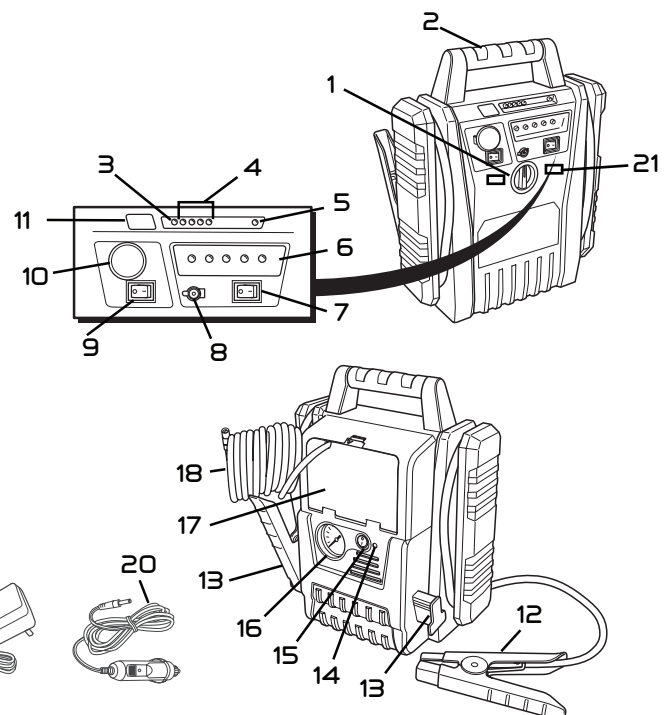
This symbol indicates a health hazard, e.g. electric shock.



The exclamation mark indicates particular risks in handling, function and use.

LOCATION OF CONTROLS

1. On/Off switch for jump start function
2. Carrying handle
3. LED for charging indicator
4. Four LEDs for internal battery indicator
5. LED for correct/wrong polarity for jump starts
6. Work light with white LEDs
7. On/Off switch for LED work light
8. Charging socket (for AC charger or 12V charger)
9. On/Off switch for 12V output socket/USB
10. 12V output socket for connection of an appropriate device, e.g. 12V charging adapter for mobile phone or similar
11. Button for charging indicator (see point 4)
12. Cable with alligator clamps for jump starts
13. Holder for secure fastening of the alligator clamps
14. LED for indicator for overheating of air compressor



15. On/Off switch for air compressor
16. Pressure gauge indicator
17. Storage box for air hose
18. Air hose
19. AC charger
20. DC charger
21. USB power port

SAFETY INSTRUCTIONS



Please read all of the operating instructions before using the product for the first time. The warranty will be void in the event of damage caused by failure to observe these safety instructions. We do not assume any liability for any consequential damage.



We do not accept liability for damage to property or personal injury caused by improper handling or non-compliance with the safety instructions. The warranty will be void in such cases.

A) IN GENERAL

- Do not submerge in water or any other liquids.
- Avoid bringing into contact with direct sunlight, high temperatures (>35°C) or extreme cold (<0°C).
- Keep away from dust and dirt.
- Keep the charging adapter and rechargeable batteries away from ignition sources or naked flames
- Keep out of reach of children
- Maintenance, adjustment, or repair work should only be carried out by a qualified engineer
- Handle the product with care
- If you see any damage, do not use Jump Starter. Ensure any repairs are carried out by a qualified engineer

B) CHARGING PROCESS

- The supplied AC charger is only intended to be used with a mains voltage of 110V/ 60Hz
- When re-charging the Heavy Duty Jump Starter, never use any other AC charger than the one supplied.
- An appropriate charger is included in the delivery for re-charging with the car accessory socket.
- Explosive gases can be generated during the charging lead batteries. Only re-charge the battery in rooms with good ventilation.

C) OPERATION

- Jump starts are only intended for vehicles with a 12V on-board voltage. In vehicles with a different voltage (6V or 24V), not only is there a risk of explosion of the battery of the power jump start system or the vehicle, but all electronic components of the on-board circuit might also be damaged.
- Before a jump start, read the operating instructions of the vehicle about how a jump start is done. If a jump start is done incorrectly, there is a risk of damaging the electronic components of the on-board circuit.
- This product is intended for jump starting a vehicle with an appropriate battery. The Heavy Duty Jump Starter is not suitable as replacement of a vehicle battery.
- Never try to jump start a vehicle with frozen battery.
- Select a stable, even and sufficiently large place for operation of the product so that it cannot topple over or fall down. Operate and store the product only in an upright standing position.
- The product must not be used in the vicinity of flammable materials or gases.
- Do not leave the Heavy Duty Jump Starter unattended while in use.
- Make sure that there is sufficient ventilation during and after operation; do not cover the product during operation.
- Never use the product immediately after it has been brought from a cold room into a warm one. Condensation which may lead to malfunctions.
- Wait until the product has reached room temperature before use.
- The compressor built into the Heavy Duty Jump Starter is not suitable for continuous operation. Leave the compressor to cool down for at least 10 minutes after a longer phase of operation before using it again.
- When using the compressor, observe the correct inflation pressure (e.g. of a tyre)

D) NOTES ON RECHARGEABLE BATTERIES



When using lead batteries, protective clothing and goggles must be worn for safety reasons.



Lead batteries contain aggressive, corrosive acids. Avoid any contact with skin or eyes with liquids from the lead battery. Never try to take lead batteries apart. Flush affected areas of skin thoroughly with water and soap. If you get acid in your eye, wash it immediately under running, clean, lukewarm water. Consult a doctor immediately.

If you get acid on your clothes, wash them immediately with plenty of water and soap.

- Never wear rings, necklaces, watches or the like when handling rechargeable batteries or charging devices.
- Rechargeable batteries must not be short-circuited
- Lead acid batteries MUST be disposed of in accordance with WEEE Directive & Product Disposal regulations.

CHARGING INDICATOR FOR INTERNAL BATTERY

Press the button (11). The four LEDs (4) show you the charging condition: The more LEDs illuminated, the more the internal battery is charged. Re-charge the battery if only red or yellow LEDs are illuminated. Green LED's must be illuminated for the Jump Start function to work.

LED WORK LIGHT

The work light (6) can be switched on or off with button (7). Always switch the work light off when you are not using it to save power.

12V OUTPUT SOCKET

The 12V output socket (10) serves for connection of suitable device, e.g charger for mobile phones or similar. The voltage at the socket (10) is switched on or off with button (9).

The current consumption of the device connected to the socket must be lower than 10A. The internal fuse will be triggered if the output current is higher. If this happens, remove the device connected to the socket. The internal fuse recovers automatically.

Since the output socket is connected directly to the internal battery via the on/off switch, make absolutely sure that the connected device is removed in time so that a total discharge of the internal battery does not occur.

AIR COMPRESSOR

Open the cover of the storage box (17) at the back. The air hose of the air compressor is placed there. Air compressor is suitable for the inflation of vehicle tyres, footballs or similar items using the supplied adapters. The air compressor is switched on and off with on/off switch (15). A pressure gauge (16) can be used for a rough measurement of the pressure inside e.g a tyre.



The air compressor delivers an air pressure of max. 100 PSI. Consider the respective value when inflating e.g a tyre (consider the operation instructions of the vehicle).

A LED (14) lights up when the compressor overheats. In this case, switch off the air compressor immediately and leave it to cool down completely before resuming operation.

JUMP STARTS

The Heavy Duty Jump Starter is only suitable for vehicles with an on-board voltage of 12V, whose negative pole of the vehicle battery is connected to the car body.




Consider the information and safety instructions of the operating instructions of the vehicle on how to do a jump start. Modern vehicles contain sensitive electronic components and controls which may be damaged when operating incorrectly.

- Turn off the ignition of the vehicle that is to be jump started. Switch off all electrical devices (e.g radio, light, etc.)
- Make sure that the battery integrated in the Heavy Duty Jump Starter is fully charged (See section 'Charging indicator for internal battery')
- The rotary knob (1) must be in the 'OFF' position. Also switch off all other functions of the Jump Starter (compressor, LED work light, 12V output socket)
- In vehicles which the negative pole of the vehicle battery is connected to the car body (modern vehicles), first connect the red alligator clamp of the Jump Starter with the positive pole of the vehicle battery.
- Then, connect the black alligator clamp with a blank metal part (no painted metal, no plastic) of the engine block. Keep as much distance as possible between the vehicle battery and petrol hoses.

- Then connect the black alligator clamp with a blank metal part (no painted metal, no plastic) of the engine block.
- Move the rotary knob (1) to the 'ON' position.
Once the plus and minus cables are correctly attached the LED (5) will illuminate in green.
If cables have been attached with reversed voltage, the LED (5) will illuminate in red and make a warning sound.
- Try to start the vehicle (approximately 5-6 seconds). Do not let the Jump Starter work for more than 6 seconds. The Jump Starter is not intended for longer starts. Pause for at least 3 minutes between attempts to jump start the battery. Stop jump starting the vehicle if the engine did not start after several attempts.
- If the engine is running, move the rotary knob (1) to the 'OFF' position
- Disconnect the black and red alligator clamps from the vehicle
- First, disconnect the black alligator clamp from the vehicle, wind it at the side of the power jumpstart system and fasten the alligator clamp at the intended holder (13)
- Then, disconnect the red alligator clamp from the vehicle battery. Wind this cable at the other side of the power jumpstart system and fasten the alligator clamp at the intended holder, as well.
- Recharge the Heavy Duty Jump Starter

RECHARGING THE HEAVY DUTY JUMP STARTER

 Switch off all product components (eg. Compressor, LED work light, 12V output socket) and move the rotary knob (1) to the 'OFF' position. If a device is connected to the 12V output socket, disconnect it from the Jump Starter.

Important: This product must be charged a minimum of every two months to maintain the condition of the battery.

a) Recharging with 110V AC charger

- Connect the low voltage cable of the AC charger (19) with the charging socket (8), plug the charger into a mains socket (110V 60Hz) and the charging LED will illuminate.
- Recharging takes approximately 50 hours if the battery of the Jump Starter is completely flat.
- Unplug all cables and check the charging indicator (11). If both green LEDs illuminate the battery is fully charged.

CHANGING THE FUSE IN THE DC CHARGER

A micro fuse is integrated in the DC charger. It can be replaced very easily by unscrewing the knurled wheel at the top of the accessory socket plug.

A fuse of type 6.3 x 33mm, 250V, 2A, quick release characteristics is required as a replacement.

Never bypass a defect fuse.

Never use any other fuse type than the one stated above.

CLEANING

The product must be switched off before cleaning. Clean the outside of the product with a dry, clean cloth.



WARNING

For the best performance of your Jump Starter, this product must be fully charged before use and then fully charged again after use. If left for long periods make sure it is fully charged every two months.

WEEE DIRECTIVE & PRODUCT DISPOSAL

At the end of its serviceable life, this product should not be treated as household or general waste. It should be handed over to the applicable collection point for the recycling of electrical and electronic equipment, or returned to the supplier for disposal.

NOTICE TO CUSTOMERS

This symbol on the battery indicates that the battery is to be collected separately.

The following apply only to users in North American.

- This battery is designed for separate collection at an appropriate collection point. Do not dispose of as household waste
- For more information, contact the retailer or local authorities in charge of waste management.

ONE YEAR LIMITED WARRANTY

Tyrell Chenergy (the “Manufacturer ”) warrants this product against defects in materials and workmanship that may occur under normal use and care, for a period of ONE YEAR from the date of purchase by the ORIGINAL purchaser (known as the “warranty period ”). **THIS LIMITED WARRANTY IS NOT TRANSFERABLE OR ASSIGNABLE.**

If there is a defect and a valid claim is received within the warranty period due to material or workmanship, the manufacturer will repair or replace the defective product with a new or reconditioned unit at the option of the manufacturer. It is the obligation of the purchaser to forward the defective product and the proof of purchase, along with shipping charges prepaid to the manufacturer or its authorized representatives in order for repair or replacement to occur.

The manufacturer hereby excludes and disclaims any and all other warranties, expressed or implied or statutory warranties, beyond those warranties specified above. The manufacturer excludes any implied warranty of merchantability or fitness for a particular purpose. This limited warranty is void if the product is misused, subjected to careless handling, repaired, or modified by anyone other than the manufacturer, or if this product is resold through an unauthorized retailer.

The manufacturer does not provide any warranty for any accessories used with this product that are not manufactured and approved by Tyrell Chenergy for use with product. Further, the manufacturer shall not be liable for any incidental, special, or consequential damage claims incurred by purchasers, users, others associated with this product, including, but not limited to, lost profits, anticipated sales, business opportunities, business interruption, and any other injury or damages.

This warranty gives the original purchaser specific legal rights and original purchaser may have other rights which vary from state to state. This product is not intended for commercial use.

Tyrell Chenergy Inc.
5405 Morehouse Dr.,Ste.320
San Diego, CA 92121
619-861-2511

