

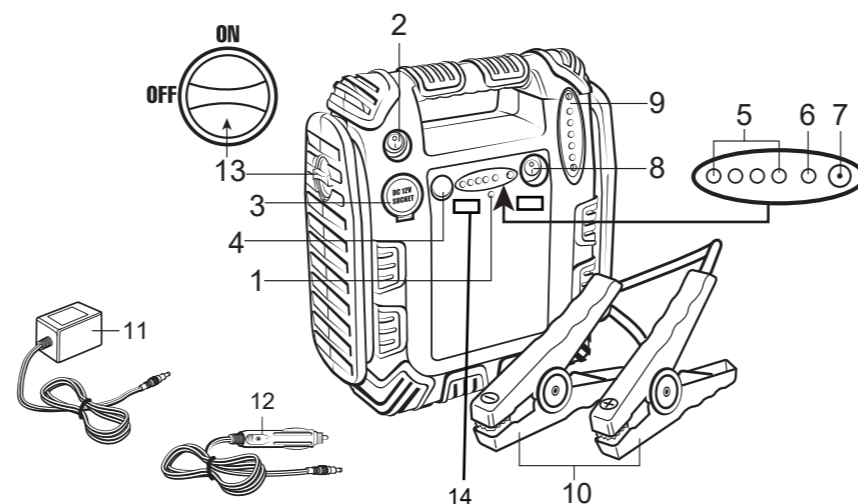
Jump Starter Manual

JUMPSTART PORTABLE POWER SYSTEM

HH745

WELCOME

This product has been carefully engineered and manufactured to give you dependable operation. Please read this manual thoroughly before operating your new product, as it contains the information you need to become familiar with its features and obtain the performance that will bring you continued enjoyment for many years. Please keep this manual on file for future reference.



CONTROLS.

1. Reverse Battery Polarity LED Indicator
2. 12 Volt Power Outlet/USB ON/OFF Switch.
3. 12 Volt Power Outlet.
4. Battery Check Button.
5. Charge Level Indicator LED.
6. Charging Indicator Light.
7. Input Charging Socket.
8. Work Light ON/OFF Switch.
9. Work Light.
10. Positive (Red) and Negative (Black) Booster Clamps.
11. AC Charger.
12. DC Charging Cord.
13. Safety Switch - the rotary switch on the left hand side of the unit controls the power to the booster cables.
ALWAYS leave this in the "OFF" position except when jump starting a vehicle.
14. 5V 2.1A USB power ports

CHARGING THE JUMPSTART SYSTEM

This unit has a maintenance free, built in sealed lead acid battery. Although the Jump start System arrives Partially charged from the factory, it **MUST BE FULLY CHARGED FOR 38 HOURS BEFORE FIRST USE**, Even if the battery status lights indicate a "full" charge. This initial charge pre-conditions the battery. Failure to follow this procedure may permanently damage the battery.

CHARGING WITH THE AC POWER ADAPTOR:

Plug the AC adaptor into any 110 volt AC wall outlet and the other end into the Input Socket of the Jumpstart System. The Charging Indicator light will illuminate to indicate the unit is charging. Full charging will take approximately 34-36 hours. (depending upon power used)

CHARGING WITH THE DC POWER CORD:

Plug the DC power cord into your vehicle's cigarette lighter socket and the other end into the Input Socket of the jumpstart System. Full charging will take approximately 14-16 hours. (depending upon power used)

NOTE: SOME VEHICLE'S CIGARETTE LIGHTERS AND 12 VOLT POWER PORTS DO NOT OPERATE UNLESS THE IGNITION SWITCH IS IN THE ACCESSORY POSITION

CHARGING TIPS AND WARNINGS:

Keep battery power topped up, ready for emergencies. Unlike some rechargeable batteries, Frequent charging will not harm and in fact, will improve the performance of the internal batter. Recharge battery as soon as possible after each use to prolong battery life. Frequent heavy Discharges between recharging will reduce battery life. Do not leave Jump start in a total Discharged state for an extended period of time as this can cause battery failure. All lead acid Batteries suffer from self-discharge over time, especially under extreme temperatures. Store in a cool dry place. It is recommended to recharge unit every 2 months when not in use and more Frequently in a warmer or colder storage conditions to keep battery at peak operating efficiency. Jump start system should not be charged for ore than 48 hours continuously. Use only the Charging adaptors provided with this unit.

NOTE: DO NOT OPERATE ANY OF THIS UNIT'S FUNCTIONS WHILE CHARGING IS IN PROGRESS.

POWER STATUS & CHARGE LEVEL INDICATOR LIGHTS:

Indicates **POWER JUMPERSTART** charge level. Depress the charge level indicator button - The charge level indicator LED(s) will turn ON in sequence to indicate the current battery charge level status. When this button is released the charge level LED(s) will turn OFF. To receive an accurate battery status reading, unplug the charging adaptor from the unit.

CHARGING LIGHT INDICATOR:

Red color LED will illuminate while **POWER JUMPER** battery is charging. When charging is completed the RED LED will stay illuminated. The light will not turn off until the charging plug is removed.

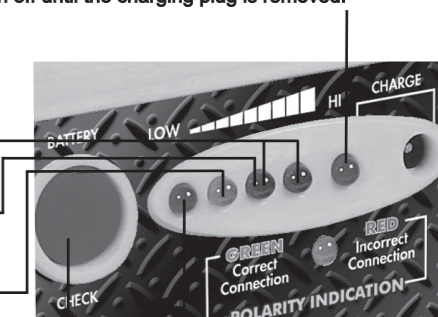
CHARGING LEVELS:

DOUBLE GREEN LED'S: Charging is not required, Battery is fully charged. Ideal level to Boost charge a dead battery.

SINGLE GREEN LED: Good - will operate most 12-volt DC accessories at this level. Recharging to full may be required to Boost charge a depleted or weak vehicle battery.

AMBER LED: Recharge as soon as practical - power level is low. Short operating time remaining.

BATTERY CHECK BUTTON



RED LED: Recharge immediately - power level is extremely low.

JUMPSTARTING AN ENGINE

JUMPSTART MUST BE FULLY CHARGED TO JUMPSTART AN ENGINE. MADE SURE THE ROTARY BOOSTER CABLE SAFESWITCH IS IN THE “OFF” POSITION.

Do not attempt to Jump start an engine if the green light does not illuminate when you press the battery check turn off ignition and all accessories(lights,radio,heater,air conditioning,etc.) in the vehicle with the weak battery that will not start. Place vehicle in park and set hand brake. For maximum power, turn off all switches on your jumpstart system and disconnect any accessories Plugged into the 12 Volt power outlet.

Check that vehicle is negatively grounded(most vehicles). Securely connect the red positive clamp to the positive(+) terminal of the vehicle battery. Then, securely connect the black clamp to a grounding point on the vehicle such as the metal frame, as far away from the battery as possible. DO NOT connect it to the negative battery terminal. Make sure both clamps have good contact. Check cable connection polarity indicator.

NOTE: DO NOT PLACE JUMPSTART WHERE IT COULD FALL WHEN VEHICLE STARTS UP. MAKE SURE THAT CABLES ARE ROUTED AWAY FROM MOTOR FAN OR BELTS.

If indicator light is green, turn rotary switch to the “on” position and start your vehicle. If indicator light is red, reverse clip connections before proceeding. Once vehicle starts, turn rotary switch to “off” position and disconnect black clamp first and then, red clamp.Restore cables on Jumpstart System and recharge unit at fist opportunity.

NOTE: WHEN STARTING VEHICLE, CRANK ENGINE IN 5-6 SECOND BURSTS. IF VEHICLE DOES NOT START UP WITHIN 2-3 ATTEMPTS, ALLOW THE JUMPSTART TO COOL FOR 3 MINUTES BEFORE ATTEMPTING TO START VEHICLE AGAIN. RETRY ONLY IF BATTERY CONDITION IS SATISFACTORY.

⚠️ WARNINGS

- Do not turn cable safety switch to “on” position if indicator light is red. Turn “on” only when light is green
- Do not allow the positive and negative booster clamps of the Jumpstart System to come into contact with each other(or a common piece of metal) at any time. Sparking, an explosion, or damage to the unit may result
- When jumpstarting a vehicle, make sure that the positive and negative booster clamps are properly connected to vehicle and battery. Failure to connect the clamps properly may cause sparking, an explosion or damage to the unit.
- Always wear eye protection when working with batteries.
- If battery acid comes into contact with eyes, flush the eyes with water for at least 10 minutes. Seek Medical attention immediately.
- If skin or clothing come into contact with battery acid, immediately wash the affected area with soap and water. Seek medical attention if redness, pain or irritation occurs.
- Be sure to remove all metal items(watches,necklaces,rings,etc.) before using the Jumpstart System.
- Always turn the Jumpstart System off when not in use. Store in a cool, dry place.
- Do not open the Jumpstart System. There are no user serviceable parts in this unit. Doing so will Void the warranty

OPERATING WORKLIGHT

The Jump start System comes with a built-in work light. The light is directly connected to the Jump start’s internal battery. Light will operate for up to 40 hours from a fully charged battery. Turn off light when not required to conserve battery power.

USE AS A 12 VOLT DC PORTABLE POWER SUPPLY

The Jump start System is equipped with an outlet socket and can be used to operate most 12 volt auto accessories and appliances(11 AMP maximum) equipped with a cigarette lighter plug. Simply lift up cover on socket and plug in appliance. Place power outlet switch located above socket in the “on” position. Length of time appliance will operate will depend on condition of battery and current draw of appliance. Periodically check battery status during operation and discontinue use immediately if battery condition falls to red level. Recharge unit as soon as possible and before further use. Power outlet is protected by an internal circuit breaker is tripped, disconnect appliance and have it checked. Circuit breaker will automatically reset once it cools down (approx. 15-2- minutes). DO NOT PLUG A CIGARETTER LIGHTER INTO THE OUTLET OF THE JUMPSSTART.

BATTERY

This units equipped with a 12 Volt 18 Amp-hour maintenance free, sealed lead acid rechargeable battery, which has a normal life expectancy of up to 1000 charging cycles and will give many years of dependable service if properly cared for following the directions above. In the event that the battery needs replacement in the future, the unit will have to be opened up by loosening the screws holding the housing together. Carefully lift off back housing to gain access to the battery. Replace and reassemble.

Replacement batteries may be purchased from an electrical supply store. Old battery should be disposed of properly and safely. Some states required recycling. Please contact your local solid waste authority for recycling information.

USB POWER PORT

You may operate the USB port and DC sockets at the same time

1. Connect a user-supplied USB cable to the USB power port on the Battery Jumper
2. Set the USB Switch to the “I” position
3. When charge is complete, set the USB Switch back to the “o” position
4. Disconnect the USB cable from the Battery Jumper.

⚠️ WARNINGS

DO NOT EXPOSE BATTERY TO FIRE OR INTENSE HEAT AS IT MAY EXPLODE

BATTERY CONTAINS NON-SPILLABLE SEALED LEAD ACID BATTERY: IF CASE SHOULD BECOME CRACKED, DISPOSE OF IMMEDIATELY TAKING ADEQUATE SAFETY PRECAUTIONS TO PREVENT INJURIES OR DAMAGE TO PERSONS OR PROPERTY. BATTERY MUST BE RECYCLED OR DISPOSED OF PROPERLY.



IMPORTANT WARNING: This product is supplied with a minimal charge ONLY at manufacture, therefore, it must be fully charged for 38 hours IMMEDIATELY after purchase. This is essential before ANY USE WHATSOEVER! Furthermore, this product cannot be used DURING THE CHARGING PERIOD. Failure to adhere to these conditions may invalidate the products warranty.

ONE YEAR LIMITED WARRANTY

Tyrell Chenergy Inc. (the **Manufacturer** warrants this product against defects in materials and workmanship that may occur under normal use and care, for a period of ONE YEAR from the date of purchase by the ORIGINAL purchaser (known as the warranty period **THIS LIMITED WARRANTY IS NOT TRANSFERABLE OR ASSIGNABLE.**

If there is a defect and a valid claim is received within the warranty period due to material or workmanship, the manufacturer will repair or replace the defective product with a new or reconditioned unit at the option of the manufacturer. It is the obligation of the purchaser to forward the defective product and the proof of purchase, along with shipping charges prepaid to the manufacturer or its authorized representatives in order for repair or replacement to occur.

The manufacturer hereby excludes and disclaims any and all other warranties, expressed or implied or statutory warranties, beyond those warranties specified above. The manufacturer excludes any implied warranty of merchantability or fitness for a particular purpose. This limited warranty is void if the product is misused, subjected to careless handling, repaired, or modified by anyone other than the manufacturer, or if this product is resold through an unauthorized retailer.

The manufacturer does not provide any warranty for any accessories used with this product that are not manufactured and approved by Tyrell Chenergy Inc, for use with product. Further, the manufacturer shall not be liable for any incidental, special, or consequential damage claims incurred by purchasers, users, others associated with this product, including, but not limited to, lost profits, anticipated sales, business opportunities, business interruption, and any other injury or damages.

This warranty gives the original purchaser specific legal rights and original purchaser may have other rights which vary from state to state. This product is not intended for commercial use.

Tyrell Chenergy Inc.
5405 Morehouse Dr., Ste.320 San Diego,
CA 92121 619-861-2511

