



Lacy's Red Angus

PRODUCTION SALE

SATURDAY, OCTOBER 24, 2020 AT 1:00 PM

Along with MC Livestock



DREXEL, MO

Welcome,

Welcome to West Central Missouri & Lacy's Red Angus! Red Angus continues to lead the industry as cattlemen demand quality genetics with strong maternal traits. That is why the Red Angus/Red Angus influenced females are still the most sought-after females in the beef industry today.

We believe the cattle are all in great shape and the bulls have all undergone genomic testing which has been incorporated into their EPDs. Carcass ultrasound data has been collected as well. All the bulls have undergone & passed an extensive Breeding Soundness Exam (BSE). The open heifers have all been fully vaccinated & subjected to a Reproductive Tract Score (RTS) as well as pelvic measurements. All of this data will be available prior to sale day.

As you thumb through this year's catalog, you'll notice the MCL prefix, these cattle are products of MC Livestock of Archie, MO. In 2019 we elected to reduce our cow herd inventory and were fortunate to have worked with Nick, Callie and Stetson Curtis to create a deal. We are truly excited to have the Curtis's as our marketing partners going forward. We believe they bring a great eye for cattle, integrity and a tremendous amount of energy to the table.

We will continue to offer a select group of commercial Red Angus females. This small group of heifers come from Lacy's Red Angus bull customers, Robert & Gail Perryman of Urich, MO & Prairie Creek Ranch of Richards, MO. These females are sired by "LACY" bulls and in many cases out of cows sired by "LACY" bulls.

Thank you for your continued interest in our operation. We are confident that we are offering you some of the highest quality cattle to sell anywhere in the country. We firmly believe in our genetics and their ability to perform, especially in fescue country.

You are welcome to view the offering anytime, whether it be at our ranch, on our website or on DV Auction. The sale videos will be available online in mid-October on our website as well as on DV Auction. Whether you intend to bid, buy or just come visit, we truly look forward to seeing you on sale day. If you are unable to attend, the sale will be broadcast live over the internet through DV Auction.

Regards,

Dan & Kelly Lacy - Lacy's Red Angus



SCHEDULE OF EVENTS

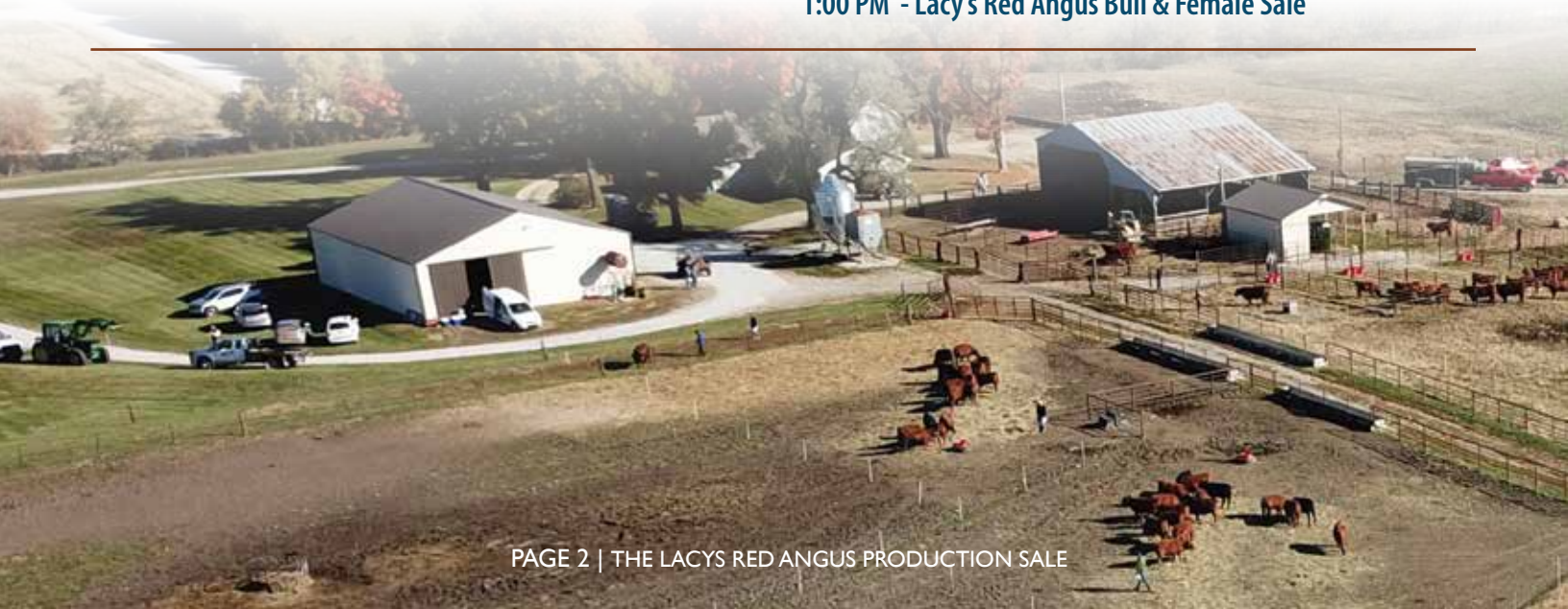
Friday, October 23, 2020

All Day Sale Cattle Preview

Saturday, October 24, 2020

9:00 am Sale Cattle Preview | 12:00 pm Lunch Served

1:00 PM - Lacy's Red Angus Bull & Female Sale



Dear Friends and Customers,

Welcome to the 5th Annual Lacy's Red Angus Production Sale. We are excited to be working with the Lacy program & participating in this year's sale. We would like to thank the Lacy family for the opportunity they have presented us with.

What a year 2020 has been! The beef industry has weathered many storms of its own. From packers, markets, viruses and actual weather this year has been challenging. One thing that has stayed the same is quality cattle top the market.

With the ever-growing interest in the Red Angus female it is safe to say they are one of the hot commodities in the beef business! Add that to the expanding list of Red Angus influenced feeder calves topping markets and the consistent desire for these cattle by the packers. What better time than now to add Red Angus into your operation?

This year's sale will continue with the same quality standards that have backed the Lacy program, structural integrity, fertility & longevity all in an easy doing package that is born & raised on fescue! We feel in this set of bulls & females there is something to fit any operation.

Feel free to call and visit or come by before the sale to view this offering and the exceptional cow families backed by them. We would love to show you around. Thank you for your interest. If we can be of assistance anytime throughout the year please do not hesitate to call.

Regards,

Nick, Callie & Stetson Curtis - MC Livestock



DVAuction
Broadcasting Real-Time Auctions

LIVE BROADCAST: [DVAUCTIONS.COM](https://dvauctions.com)

Wade Fisher: (254) 319-5349





Fellow Red Angus Enthusiasts,

Welcome to the 5th Annual Lacy's Red Angus production sale! Once again an elite offering of Red Angus seedstock will be offered for your appraisal on October 24, 2020 in Drexel, Missouri. We are excited to welcome Nick, Callie, and Stetson Curtis of MC Livestock as a marketing partner in the Lacy's Red Angus Production Sale. MC Livestock is a young and progressive Red Angus seedstock source in the heart of Missouri. The Curtis family has made several key transactions and have acquired an elite set of Red Angus females, with the foundation of their program being from Lacy's Red Angus.

The Red Angus breed continues to gain momentum in the commercial sector of the business. The breed has experienced record growth, increased registrations, and more breeder enthusiasm than ever before. It is no secret that red-hided cattle are taking the lead with the popularity vote in all sectors of the beef business due to their ability to adapt, convert, and survive. Longevity, fertility, and fleshing ability go hand in hand when it comes to the topic of discussing the key traits of practicality in the beef business.

Lacy's Red Angus cowherd has been built upon these traits of importance since the beginning. Fundamentally correct cattle that are built to last and thrive in a fescue-based forage environment. Through disciplined selection, the females are mated to breed leading AI sires that offer superior phenotype, balanced genomics, and most importantly a fundamentally correct build. Females such as Lacy Lakota 8105 and Lacy Marie 8190 have a significant impact on this offering through the influence of sons, grandsons, daughters, and granddaughters that have surfaced as standouts. In 2019, Lacy Collusion 115F surfaced as a true standout that was admired by the most respected cattlemen from around the country. Collusion commanded a \$32,000 hammer price, selling to C-Bar Red Angus and Holton Cattle Company. On October 24, the initial semen offering from this exciting new sire will hit the market after a full year of being used exclusively in herd. A true sale feature! Be sure to notice that a full brother to Collusion will sell as lot 2 and a maternal brother as lot 3 in this year's sale.

The strong maternal impact that these females have on the cow herd will be everlasting for generations. We invite you to join us at the ranch on Saturday, October 24th, 2020 in Drexel, Missouri. The videos of the sale cattle will be available the week prior to the sale at DVAuction.com. In the event that you will not be able to make the sale, a real time broadcast will be available at DVAuction.com to bid from the comfort of your home. If you have any questions regarding the sale offering, we welcome your calls and inquiries. We hope to see you sale day at Lacy's Red Angus!

Enjoy the cattle,

A handwritten signature in black ink, appearing to read "Jeb Bly", written in a cursive style.

Innovation AgMarketing, LLC



SALE INFORMATION

SALE DAY CONTACTS:

Dan Lacy: (913) 909-1912
Nick Curtis: (573) 999-3887

AUCTIONEER:

Col. Jered Shipman: (806) 983-7226

SALE MANAGEMENT:

Innovation AgMarketing, LLC
Graham Blagg: (530) 913-6418
INNOVATIONAGMARKETING.COM

RING SERVICE:

Jesse Bolin - Missouri Beef Cattleman
(417) 830-2835
J.W. Brune - Lee AgriMedia
(785) 865-6624
Mitchell Armitage: (405) 641-9438

LIVESTOCK MORTALITY INSURANCE:

Graham Blagg: (530) 913-6418

RED ANGUS ASSOCIATION REPRESENTATIVES:

Tom Brink RAAA CEO: (940) 387-3502
Harold Bertz: (816) 661-2289

ANNOUNCEMENTS:

A supplement sheet will be available sale day with updated information, corrections, and additional information. This sheet and any announcements made sale day and from the auction block during the sale will take precedence over printed material associated with this sale. Anyone attending this sale attends at his or her own risk. Lacy's Red Angus and sale staff will not be held responsible for any personal injury incurred attending this sale.

TERMS AND CONDITIONS:

All cattle sell under the terms and conditions outlined by the Red Angus Association of America. To view these terms visit: <http://redangus.org/marketing/sale-planner/sale-terms-conditions>

PHOTOGRAPHY:

Allison Manchester: (219) 776-0594

SALE CONSULTANT:

Cheramie Viator: (979) 777-9419

VETERINARIAN:

Dr. Michael Koch DVM: (816) 304-9182

HERD HEALTH:

All bulls have passed a breeding soundness exam and guaranteed fertile through the first breeding season.

ACCOMMODATIONS:

Comfort Inn & Suites, Harrisonville, MO
(816) 884-4124
Candlewood Suites, Overland Park, KS
(913) 685-8200

AD DESIGN & CATALOG PRODUCTION:

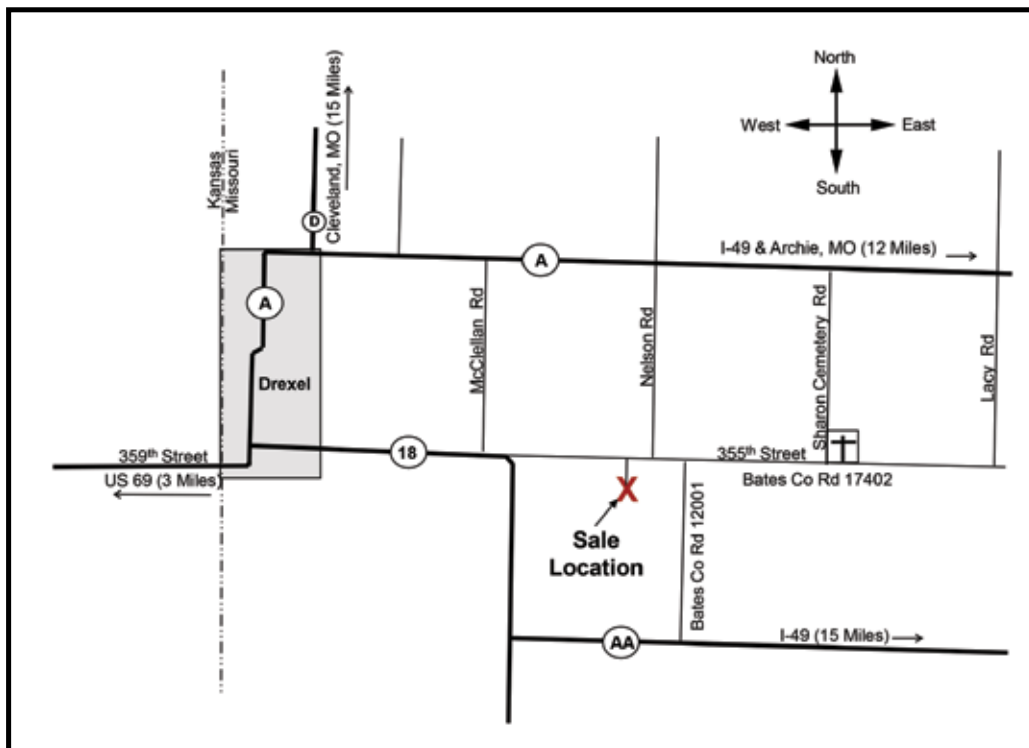
THM PROMOTIONS LLC - Tracy McMurphy
806-679-0231

Lacy's Red Angus will assist with delivery as requested. Contact us for more information.

SALE LOCATION AND DIRECTIONS:

12209 NW CR 17402 - Drexel, MO 64742

We are located just east of Drexel, Missouri & 30 minutes south of the Kansas City metro area.
Easily accessible from either I-49 or KS-69.



LACYSREDANGUS.COM

Missouri Red Angus Association Fescue Belt Certified Program Announced

The Missouri Red Angus Associations Board of Directors recently approved the “Missouri Red Angus Association Fescue Belt Certified” program as an initiative designed to promote Missouri Red Angus members genetics.



Official MORAA Fescue
Belt Certification Logo

Many of us who live in the “fescue belt” have experienced the problems associated with importing newly purchased cattle into our environment. What we’ve seen is a significant percentage of cattle that have not been raised on fescue struggle to perform after being imported onto this “grass we love to hate”. Some animals eventually overcome this issue, but many will not and will eventually be culled from the herd.

Fescue toxicity results from toxins called ergot alkaloids, which are produced by a fungus called endophyte that grows within the fescue plant. Cattle experiencing fescue toxicosis may exhibit rough hair coats, heat stress, suppressed appetite, poor growth rates, reduced reproductive performance, and in some cases lost tail switches or even hooves. The decreased animal performance seen during the “summer slump” of cool-season pastures is made even worse by these toxic effects of fescue.

Research on the subject of fescue management has been done for years. Several strategies can be used to mitigate the toxic effects of fescue, including removal or suppression of seedheads, overseeding of pastures with legumes or other forages, and good mineral supplementation programs. However, fescue remains a serious challenge. The USDA estimates fescue toxicosis costs the U.S. beef industry an estimated \$600 million to \$1 billion annually in lost revenue because of reduced reproductive and growth rates in cattle herds.

Missouri beef producers recognize the value of selecting cattle that are adapted to fescue. In 2016, University of Missouri Extension Geneticist, Dr. Jared Decker, was awarded a \$3 million grant from the USDA to evaluate genetic differences in cattle among regions. Decker and his colleagues are utilizing DNA markers to study the interactions between cattle DNA and the environment. The study is focused on DNA, hair shedding, and tall fescue forage. When complete, the data will be used to design region-specific EPDs.

The entire state of Missouri is situated within the fescue belt. Since fescue was introduced into our region, Missourians have built their herds retaining only genetics that have proven to be “fescue tolerant.” When looking for Red Angus genetics, look for the MORAA FBC logo & cattle that have “**Bred-in Fescue Tolerance.**”



**A groundbreaking,
genetically verified
female program
for the commercial
beef industry.**

Qualifications

Premium Red Baldy is a female-only program, capitalizing on hybrid vigor. No steers will be tagged in this non-PVP tagging program.

To qualify for Premium Red Baldy, females must be sired by bulls in the top 50% of the breed for Baldy Maternal Index (BMI\$) or Herdbuilder Index (HB).

Breed percentages on qualified females will range from 25%-75% Red Angus and Hereford, with a small allowance for other breeds.

Females must be red-bodied with either a bald or brockle face. No black-hided cattle will be admitted, regardless of genetic makeup.

Benefits

Premium Red Baldy is a tagging program designed to take advantage of hybrid vigor by maximizing the best traits of both Red Angus and Hereford and providing commercial producers with premium replacement females.

The program will help producers access genetically verified females that have the best combination of longevity, fertility and adaptability to incorporate into producers' herds.

As the nation's cow herd expands to meet beef demand, Premium Red Baldy females will rise to the challenges of producing more beef sustainably and profitably, without sacrificing quality.

The Premium Red Baldy program has the ideal balance of maternal and carcass traits, which will yield cattle poised to increase the profitability of the commercial producer.

Premium Red Baldy uses genetics supported by the only two beef breed associations backed by whole herd reporting.

Please contact your respective breed representative for more information.



American Hereford Association
Trey Befort
Director of Commercial Programs
(816) 842-3757
tbefort@herefordbeef.org



Red Angus Association of America
Chessie Mitchell
Tag Program Coordinator
(940) 387-3502, Ext. 2
chessie@redangus.org





"The Midwest's Source of Replacement Females"

The Show-Me-Select® Replacement Heifer Program is an educational conduit for beef producers, veterinarians and allied industry, and is focused on enhancing the adoption of reproduction and genetic/genomic technologies across Missouri. The program, which began in 1996 with pilot programs in northeast and southwest Missouri, is the only statewide on-farm beef heifer development and marketing program of its kind in the United States. Nearly 150,000 heifers, from more than 900 farms, are enrolled in the program. The marketing arm of the program has reported sales of almost 37,000 heifers into 20 states nationwide, with gross receipts of more than \$60 million. To date, MU's investment in implementing the Show-Me-Select Replacement Heifer Program has resulted in an estimated impact of \$200 million statewide.

The Show-Me-Select Replacement Heifer Program uses the latest research on health, nutrition, genetics and reproductive science to ensure Missouri counties continue to be national leaders in providing quality beef. The program focuses on Missouri's farmers and is dependent upon active participation from regional extension livestock specialists and local veterinarians, each of which are critical components of the agricultural sector of this state. This program is unique in that it is an educational program targeted at improving production efficiency through increased use of existing technology, coupled with the marketing component.

Program objectives:

- Improved heifer development programs through a Total Quality Management strategy
- Increased marketing opportunities for and added value for Missouri-raised heifers
- Creation of reliable sources of quality replacement heifers based on management, reproduction and genetics

For more information on enrolling heifers in Show-Me-Select Program or for a schedule of upcoming sales, search for Show-Me-Select at www.extension.missouri.edu, contact your regional Extension Livestock Field Specialist, or reach out to Dr. Jordan Thomas, State Beef Extension Specialist at thomasjor@missouri.edu or (573) 882-1804.



THE BULL GUARANTEE

Unless otherwise noted, all the breeding age bulls will have passed a breeding soundness exam prior to pick up/delivery. In addition to the standard terms and conditions of the Red Angus Association of America, we will provide the first breeding season (the 90-day period immediately following turn out) guarantee on all yearling and older bulls. This guarantee is not an insurance or mortality policy, but a guarantee on functional fertility. It is not a substitute or replacement for poor management. Buyer assumes all risks for injury due to running bulls together or management decisions outside genetic control. For the guarantee to apply, we ask that you contact us as soon as a condition is observed and before the animal is sold. We will work with you to determine whether the animal is returned or sold for slaughter. We will attempt to provide a suitable replacement. If one cannot be provided of equal or greater value, we will issue a sale credit to be used in a future sale for the full purchase price less the salvage value of the animal.

PROPER MANAGEMENT OF YEARLING BULLS

INTRODUCTION

Yearling bulls represent a large commitment to beef operations. Besides their purchase price, they are the future genetic material of the herd that can influence several generations of stock. Because yearlings still have a significant amount of growth and development ahead of them, they require a higher level of care and management than their older counterparts. This is especially true now as yearling bulls can possess considerably more genetic potential for growth than their ancestors.

PREBREEDING SEASON MANAGEMENT

Nutritional Management

One of the most common complaints of yearling bull purchasers is the run down condition these bulls can exhibit after their first breeding season. This situation can be largely avoided with good bull management. Whether the bulls were developed on the ranch, in a commercial facility, or at a centralized bull test, they were probably fed to gain from 2.5 to 4.0 pounds per day from weaning to one year of age. After coming off of test, and until they are turned out with females, they should continue to gain around 2.0 pounds per day.

Dry matter intake, energy and protein requirements as well as diet formulation is provided as a management aid. Bulls grazing a grass paddock may need to receive 8 to 13 pounds of grain per day, similar to those on dry hay. Some will argue that bulls should not be pampered with grain supplements, but to insure a long and reproductive life, their basic nutrient requirements must be met. Quality of forage is extremely important to formulating proper bull diets. Many diet formulations can easily satisfy yearling bull maintenance and growth requirements. For example, some producers will allow bulls to graze cereal grain pastures with minimal supplementation, while others will have to feed a complete diet in a drylot situation.

Protein Requirement

After achieving their first birthday, bull's protein requirements settle to about 10% of their total diet, depending on their dry matter intake. Usually this requirement can be met by adding one pound of a protein supplement per day to the grain portion of the diet. If high quality forage (pasture or hay) is fed, the additional protein supplement may not be needed. Forage testing and balancing the diet will pinpoint supplemental needs.

Mineral Requirements

Calcium and phosphorus are major minerals. Diets that contain approximately .40% calcium and .20% phosphorus are sufficient to meet dietary goals. The ration between calcium and phosphorus should be maintained at 2:1 or greater. In addition, trace mineral requirements should be met. Research has shown that feeding zinc at 60 ppm of the diet is beneficial to male reproduction. Other trace minerals like copper, manganese, and selenium should be monitored. Many commercial sources of trace minerals are available, but if desired a mixture of 40% dicalcium phosphate, 20% limestone, 30% trace mineral salt and 10% Selenium 90 premix can be used.

Vitamin Requirement

Any diet that includes high-quality, green forages should provide enough vitamin A to meet the yearling bull's requirement. Vitamin A is inexpensive to feed, and therefore diet fortification near 30,000 IU per day would be cost effective. If forages are weathered and/or of low quality, an intramuscular injection of 3 million IU of vitamin A is advisable. Injectable vitamin A will maintain adequate liver stores for over 100 days.

By Twig Marston - Extension Beef Specialist

Department of Animal Sciences and Industry

Kansas State University, Manhattan

BREEDING SEASON MANAGEMENT

Number of Females

Setting absolute guidelines for cow-to-bull ratio is difficult because there are several variables that have an impact on this number. Examples are a bull's age, size, condition, and sex drive. Environmental factors like: size of the breeding pastures, type of terrain, climate, and length of the breeding season can also affect the correct cow-to-bull ratio. Absolutely, a yearling bull will not be able to service as many cows as an older counterpart. As a rough guideline, however, the working range is approximately 10 to 25 females per yearling bull during a 45 to 60 day breeding season.

Length of Breeding Season

A maximum of 45 to 60 days is an ideal length of breeding season for yearling bulls. Ninety days is an absolute maximum. One method of saving wear and tear on a yearling is to turn him out after an older bull has been with the herd for the first one or two heat cycles. Some producers rotate bulls in and out of pastures to assure a lazy bull's mates can get covered by another. Regardless of the management style, it is not advantageous to run yearling bulls with cows for long periods of time. They will waste a considerable amount of energy chasing cows and losing body condition instead of building up reserves for the next breeding season.

Observation

Try to observe the yearling bull closely to make certain he is detecting heat and breeding cows. Also, keep an eye on his condition. If he is getting too thin and rundown, he needs a rest. Thin bulls are more apt to hurt themselves, become less fertile, and have increased nutritional needs after the breeding season. Yearling bulls should not be pastured mated to cows that are extremely larger than themselves. Physically, this height mismatch may cause injury and failure to mate properly.

AFTER THE FIRST BREEDING SEASON

Feeding

Yearling bulls will probably lose from 100 to 300 pounds during their first breeding season. In addition to gaining back this weight during their first rest, they must also gain enough body mass as to achieve 75% of their mature weight by their second birthday. For example, if a bull's potential mature weight is 2,000 pounds, he should weigh at least 1,500 pounds at two years. If he weighed 1,250 pounds at turn-out time as a yearling and lost 200 pounds during the breeding season, he would need to gain about 2.0 pounds per day during the nine months until his second birthday. In order to gain 2.0 pounds per day, coming 2-year-old bulls may need to be fed 13 pounds of grain, protein supplement, and a full-feeding of hay. High quality forages could be utilized to reduce the grain and supplement portions of the diet. A word of caution: do not try to bring a bull back too fast with too much grain because of risk of foundering him.

Health Management

In the fall, after the first breeding season, treat the bull for internal and external parasites. The following spring, when he is two-years old, deworm him again and give him annual booster vaccinations against the diseases listed earlier.



LOT 1 - LACY COLLUSION 115F

Offering 200 Units of Semen!

The only opportunity to acquire semen until June 2021...

Semen will be offered in increments of 10 units. The winning bidder will have the option to take 10 or more units in increments of 10 units until all 200 units are sold.

The initial offering of semen to sell! LACY Collusion 115F was the \$32,000 sale topping highlight from the Lacy's Red Angus 2019 Fall Production Sale. Collusion captivated even the most discriminating and critical breeders with his athletic build, perfect foot design, and genuine squareness of build. While Collusion semen has remained closed to the general public, he has experienced exponential use within the three programs that believe in him wholeheartedly. Collusion is a dense, bold bodied, big hiped, and stout pinned beef bull that reads with true muscle shape and expression. His dam is the cornerstone LACY Lakota 8105 matriarch that has left behind a lasting impact within the Lacy program. This will be the ONLY opportunity to acquire semen on this unique Herd Sire until June 2021!

1	LACY COLLUSION 115F																																												
	DOB: 9/9/18	Reg: 4083822	Tattoo: 115F	A - 100% AR																																									
VGW JUSTICE 614	BUF CRK PATRIOT M183		BW	IMF																																									
FRITZ JUSTICE 8013	VGW M82-FIREFLY 0479		68	2.39																																									
FRITZ CHRIS 6047	5L HOBBO BEN 04-4422		AWW	REA																																									
	FRITZ CRIS 1051		779	14.97																																									
CCF GOLD BAR 0251	LCHMN GOLD ROBBER 1909E		AYW	BF																																									
LACY LAKOTA 8105	GMRA PRINCESS 720		1259	0.25																																									
LACY MIS MIMI 6193	NSF LEADING EDGE N013		DMPPA																																										
	LACY MS CHEROKEE 380N		98																																										
<table border="1" style="width: 100%; border-collapse: collapse;"> <thead> <tr> <th>HB</th> <th>GM</th> <th>CED</th> <th>BW</th> <th>WW</th> <th>YW</th> <th>Milk</th> <th>ME</th> <th>HPG</th> <th>CEM</th> <th>Stay</th> <th>Marb</th> <th>YG</th> <th>CW</th> <th>REA</th> <th>Fat</th> </tr> </thead> <tbody> <tr> <td>225</td> <td>48</td> <td>13</td> <td>-1.1</td> <td>73</td> <td>112</td> <td>27</td> <td>6</td> <td>8</td> <td>9</td> <td>23</td> <td>0.58</td> <td>0.13</td> <td>36</td> <td>0.21</td> <td>0.03</td> </tr> </tbody> </table>														HB	GM	CED	BW	WW	YW	Milk	ME	HPG	CEM	Stay	Marb	YG	CW	REA	Fat	225	48	13	-1.1	73	112	27	6	8	9	23	0.58	0.13	36	0.21	0.03
HB	GM	CED	BW	WW	YW	Milk	ME	HPG	CEM	Stay	Marb	YG	CW	REA	Fat																														
225	48	13	-1.1	73	112	27	6	8	9	23	0.58	0.13	36	0.21	0.03																														



LACY LAKOTA 8105 - DAM OF LOTS 1-3

Lacy's Red Angus
Dan Lacy Family - Drexel, MO
(913) 909-1912

C-Bar Red Angus
Steve Maier Family - Brownell, KS
(785) 623-9736

Holton Cattle Company
Paul Holton Family - Cisco, TX
(254) 631-7632



LOT 2 - LACY PROVOST 076G

LACY Provost 076G leads off the yearling bull division of the 2020 offering. He is a full brother to the \$32,000 high selling stud, LACY Collusion 115F, that topped the 2019 sale. Provost 076G is a dense made, thick ended, powerhouse herd sire prospect that offers a sensible 78-pound birth weight and spreads to nearly 700 pounds at weaning time. His dam is the great LACY Lakota 8105 matron, a true foundation breeding piece in our program. Be sure to study his foot quality, structural integrity, and athletic build. A true sale feature that is Show Me Select eligible. Top 26% HB, top 14% GM, top 16% CED, top 18% WW, top 16% YW, top 17% ADG, top 4% CEM, top 13% Marb, top 17% CW, and top 18% REA. Retaining ½ Semen Interest. Offering ½ Semen Interest and Full Possession.

2

LACY PROVOST 076G



DOB: 9/2/19 Reg: 4237548 Tattoo: 076G A - 100% AR

VGW JUSTICE 614
FRITZ JUSTICE 8013
 FRITZ CHRIS 6047

BUF CRK PATRIOT M183
 VGW M82-FIREFLY 0479
 5L HOBBO BEN 04-4422
 FRITZ CRIS 1051

BW	IMF
78	2.9
AWW	REA
684	14.67
AYW	BF
1221	0.22
DMPPA	
98	

CCF GOLD BAR 0251
LACY LAKOTA 8105
 LACY MIS MIMI 6193

LCHMN GOLD ROBBER 1909E
 GMRA PRINCESS 720
 NSF LEADING EDGE N013
 LACY MS CHEROKEE 380N

HB	GM	CED	BW	WW	YW	Milk	ME	HPG	CEM	Stay	Marb	YG	CW	REA	Fat
193	50	15	-1.4	68	110	27	0	9	10	17	0.59	0.09	31	0.2	0.02



LACY FREIGHT TRAIN 101F - MATERNAL BROTHER TO LOTS 1-3



LOT 3 - LACY KARGO 073G

Lacy Kargo 073G is a maternal sib to the \$32,000 sale topping stud, Lacy Collusion 115F, that was selected by C-Bar Red Angus and Holton Cattle Company. Other maternal brothers would include Lacy Freight Train 110F, owned by Rutt Red Angus, as well Lacy Provost 076G, selling as lot 2. The influence of Lacy Lakota 8105 has made a substantial impact on the Lacy's Red Angus program and her impact will be everlasting. Lacy Kargo 073G is sired by the great Red Ringstead Kargo 215U, also the sire of the \$60,000 Red Blair's Bingo 581B and Red Six Mile Car Load 275D. Lacy Kargo 073G combines two elite individuals in Kargo and 8105. He boasts an impressive weaning weight of 739-pounds, while charting top 17% Stay, top 11% YG, and top 7% REA. A unique twist in pedigree yet backed by the same consistency and quality you have come to expect at Lacy's Red Angus!

3

LACY KARGO 073G



DOB: 9/12/19 Reg: 4237544 Tattoo: 073G A - 100% AR

RED RINGSTEAD KARGO 107M
RED RINGSTEAD KARGO 215U
 RED RINGSTEAD MS EQUAL 589P

RED COMPASS KARGO 83K
 RED GET-A-LONG MRS. YOUNG 09
 RED SSS YUKON 440K
 RED SSS MISS EQUAL 495G

BW	IMF
84	1.71
AWW	REA
739	15.44

CCF GOLD BAR 0251
LACY LAKOTA 8105
 LACY MIS MIMI 6193

LCHMN GOLD ROBBER 1909E
 GMRA PRINCESS 720
 NSF LEADING EDGE N013
 LACY MS CHEROKEE 380N

AYW	BF
1218	0.21
DMPPA	
98	

HB	GM	CED	BW	WW	YW	Milk	ME	HPG	CEM	Stay	Marb	YG	CW	REA	Fat
178	46	13	-0.6	63	100	24	0	8	6	18	0.14	0.01	23	0.3	0.02



RED RINGSTEAD KARGO 215U - SIRE OF LOT 3



LOT 4 - LACY TYSON 068G

4

LACY TYSON 068G



DOB: 9/6/19 Reg: 4237534 Tattoo: 068G A - 100% AR

MUSHRUSH IMPRESSIVE CA U236
LSF SRR TYSON 3025A
 LSF JIBA R5009 W9247

BUF CRK LANCER R017
 MUSHRUSH MADAM LT R265
 MESSMER PACKER S008
 LSF JIBA K1004 R5009

BW	IMF
82	3.05
AWW	REA
642	13.74

LACY FHG LEGACY 6097
LACY LAKOTA 8014 020C
 LACY LAKOTA 8014

BIEBER MAKE MIMI 7249
 LACY MS CHEROKEE 102M
 CCF GOLD BAR 0251
 LACY REBALAS 35L

AYW	BF
1238	0.27
DMPPA	98

HB	GM	CED	BW	WW	YW	Milk	ME	HPG	CEM	Stay	Marb	YG	CW	REA	Fat
192	49	15	-1.4	76	115	27	1	12	12	16	0.36	0.02	26	0.4	0.03

Lacy Tyson 068G is the powerful full brother of Lacy Iron Mike 005E, the \$10,000 stud that is the up and coming herd sire for Lacy's Red Angus and MC Livestock. His dam, Lacy Lakota 8014 020C is an exciting young female in the donor pen that has left a lasting impact on both programs through the influence of Iron Mike. Tyson 068G is rugged in his general design, big footed, stout hiped, and offers an athletic stride. Numerically he ranks top 12% HB, top 15% CED, top 4% WW, top 9% YW, top 25% Milk, top 25% ADG, top 1% CEM, top 14% YG, and top 3% REA. Here is your chance to own a full brother to the great Iron Mike!



LACY LAKOTA 8014 020C - DAM OF LOT 4



LACY LAKOTA 8014 - MATERNAL GRANDDAM OF LOT 4



LOT 5 - LACY RINGSIDE 005E 055G

5

LACY RINGSIDE 005E 055G

DOB: 9/2/19 Reg: 4237510 Tattoo: 055G A - 100% AR

LSF SRR TYSON 3025A
LACY IRON MIKE 005E
 LACY LAKOTA 8014 020C

MUSHRUSH IMPRESSIVE CA U236
 LSF JIBA R5009 W9247
 LACY FHG LEGACY 6097
 LACY LAKOTA 8014

BW	IMF
81	2.36
AWW	REA
725	14.57

CCF GOLD BAR 0251
LACY LAKOTA 7097 482
 LACY RUBY 7097

LCHMN GOLD ROBBER 1909E
 GMRA PRINCESS 720
 5L SIGNATURE 5615
 LACY MS CHEROKEE 70M

AYW	BF
1267	0.22
DMPPA	
108	



LACY IRON MIKE 005E - SIRE OF LOT 5

HB	GM	CED	BW	WW	YW	Milk	ME	HPG	CEM	Stay	Marb	YG	CW	REA	Fat
193	50	11	-1.4	81	127	33	3	12	8	18	0.38	0.03	41	0.53	0.03

Lacy Ringside 005E 055G is a member of the Lacy Iron Mike 005E rookie calf crop that has been the talk of visitors that have made an early stop in Drexel. Ringside exemplifies the body shape, density, and performance that we envisioned when incorporating Iron Mike into our breeding program. Ringside is backed by a productive daughter of CCF Gold Bar 0251, tracing to the 5L Signature 5615 influence. Ringside boasts impressive performance data, charting a WW Ratio of 117 and a YW Ratio of 109. His impressive dam, Lacy Lakota 7097 482 was a member of the 2016 NWSS Grand Champion Pen of Three Females. Numerically, he ranks top 6% HB, top 10% GM, top 1% WW, top 2% YW, top 5% ADG, top 24% HPG, top 25% CEM, top 16% STAY, top 16% YG, top 2% CE, and top 1% REA. We believe in his phenotype, his structural integrity, and his lineage. We'll see you "Ring Side" on Saturday, October 24 in Drexel, Missouri!

Retaining 1/2 Semen Interest. Offering 1/2 Semen Interest and Full Possession.



DAM OF LOT 5 WAS A MEMBER OF THE 2016 CHAMPION PEN OF HEIFERS AT THE NATIONAL WESTERN



LOT 6 - MCL IRON MIKE 9523

MCL Iron Mike 9523 is a powerful, shapely son of Lacy Iron Mike 005E. He is from the GMRA Peacemaker 1216 influence that is backed by the Lakota cow family. He is a performance standout, charting an impressive 117 WW Ratio, weaning at nearly 800 pounds. 9523 also offers a YW Ratio of 108. He ranks as the number 1 member of his contemporary group from a performance standpoint. Numerically he ranks top 25% HB, top 9% GM, top 1% WW, top 1% YW, top 4% ADG, top 1% Milk, top 20% YG, top 5% CW, and top 2% REA. A performance and carcass merit standout that we plan to incorporate back into our program in order to positively impact future generations of Red Angus genetics. *Retaining ½ Semen Interest. Offering ½ Semen Interest and Full Possession.*

6

MCL IRON MIKE 9523



DOB: 9/4/19 Reg: 4242250 Tattoo: 9523 A - 100% AR

LSF SRR TYSON 3025A
LACY IRON MIKE 005E
 LACY LAKOTA 8014 020C

MUSHRUSH IMPRESSIVE CA U236
 LSF JIBA R5009 W9247
 LACY FHG LEGACY 6097
 LACY LAKOTA 8014

BW	IMF
88	1.96
AWW	REA
795	13.61

GMRA PEACEMAKER 1216
LACY LAKOTA 482 056D
 LACY LAKOTA 7097 482

FRITZ JUSTICE 8013
 GMRA THELMA 930
 CCF GOLD BAR 0251
 LACY RUBY 7097

AYW	BF
1275	0.17
DMPPA	
110	

HB	GM	CED	BW	WW	YW	Milk	ME	HPG	CEM	Stay	Marb	YG	CW	REA	Fat
186	51	7	-0.6	87	136	34	3	12	6	18	0.47	0.03	37	0.45	0.02



LACY LAKOTA 7097 482 - DAM OF LOT 5 AND MATERNAL GRANDDAM OF LOT 6

THE FALL YEARLING BULLS



LOT 7 - MCL IRON MIKE 9504

7

MCL IRON MIKE 9504



DOB: 8/29/19 Reg: 4242232 Tattoo: 9504 A - 100% AR

LSF SRR TYSON 3025A
LACY IRON MIKE 005E
LACY LAKOTA 8014 020C

MUSHRUSH IMPRESSIVE CA U236	BW	IMF
LSF JIBA R5009 W9247	50	2.61
LACY FHG LEGACY 6097	AWW	REA
LACY LAKOTA 8014	635	11.41
CCF GOLD BAR 0251	AYW	BF
RHRA Z-LINE LC 043 536R	1131	0.35
5L BLAZIN RED 1354-6166	DMPPA	
RHRA JEWEL LC 013 538R	101	

LACY GOLD BAR 1120
LACY LAKOTA 0116 473
LACY REBA 0116

HB	GM	CED	BW	WW	YW	Milk	ME	HPG	CEM	Stay	Marb	YG	CW	REA	Fat
192	49	16	-3.2	74	118	28	3	14	10	16	0.32	0.07	37	0.34	0.02

Soggy, deep bodied, and dense made. MCL Iron Mike 9504 is a massive bodied individual that has the look of a true female maker! A low birth weight individual that is a true calving ease specialist from the Iron Mike sire group. 9504 is a dark red stud that started with a 50-pound actual birth weight yet weaned off with a WW Ratio of 106 and a YW Ratio of 104! A big spread bull that ranks top 8% CED, top 6% WW, and top 7% YW. He also charts among the top 10% HB, top 20% GM, top 10% ADG, top 17% Milk, top 11% HPG, top 3% CEM, top 5% CW, and top 5% REA. A sleep all night heifer safe option that we plan to utilize in herd. Study the quality and real world spread that 9504 offers on sale day! *Retaining 1/2 Semen Interest.*

9

LACY IRON MIKE 090G



DOB: 8/31/19 Reg: 4237574 Tattoo: 090G A - 100% AR

LSF SRR TYSON 3025A
LACY IRON MIKE 005E
LACY LAKOTA 8014 020C

MUSHRUSH IMPRESSIVE CA U236	BW	IMF
LSF JIBA R5009 W9247	72	2.92
LACY FHG LEGACY 6097	AWW	REA
LACY LAKOTA 8014	651	12.54
BECKTON EPIC R397 K	AYW	BF
LSF MINOLA T7172 W9041	1070	0.28
LCC MAJOR LEAGUE A502M	DMPPA	
LACY TOWKANA 5096	100	

LSF SAGA 1040Y
LACY ROBIN 8080 068D
LACY ROBIN 8080

HB	GM	CED	BW	WW	YW	Milk	ME	HPG	CEM	Stay	Marb	YG	CW	REA	Fat
165	45	11	-2.8	58	85	27	2	14	8	16	0.58	0.18	22	0.03	0.05

Lacy Iron Mike 090G is backed by a young and productive daughter of LSF Saga 1040Y that is from the Robin line. He boasts a sensible 72-pound actual birth weight, double digit CED and negative BW EPD. He ranks top 15% Marb, top 8% HPG, and top 29% CEM. Recommended for use on well-managed heifers or moderate production age females.

8

MCL IRON MIKE 9529



DOB: 9/6/19 Reg: 4242256 Tattoo: 9529 A - 100% AR

LSF SRR TYSON 3025A
LACY IRON MIKE 005E
LACY LAKOTA 8014 020C

MUSHRUSH IMPRESSIVE CA U236	BW	IMF
LSF JIBA R5009 W9247	78	1.99
LACY FHG LEGACY 6097	AWW	REA
LACY LAKOTA 8014	711	14.54
BECKTON EPIC R397 K	AYW	BF
LSF MINOLA T7172 W9041	1247	0.26
CCF GOLD BAR 0251	DMPPA	
LACY MISS LOGAN 12H	103	

LSF SAGA 1040Y
LACY LAKOTA 010 061D
LACY LAKOTA 010

HB	GM	CED	BW	WW	YW	Milk	ME	HPG	CEM	Stay	Marb	YG	CW	REA	Fat
201	50	10	-0.1	78	123	30	2	16	8	18	0.35	0.07	28	0.19	0.02

MCL Iron Mike 9529 is a dark red, rugged designed son of Iron Mike that is backed by the Lacy Lakota 010 daughter by LSF Saga 1040Y. 9529 offers a sensible birth weight of 78-pounds and spreads to over 700 pounds of pay weight at weaning time. He boasts a 105 WW Ratio and a 106 YW Ratio. Numerically he charts top 5% HB, top 19% GM, top 3% WW, top 4% YW, top 10% ADG, top 9% Milk, top 3% HPG, top 13% Stay, top 23% CW, and top 18% REA.



LOT 8 - MCL IRON MIKE 9529



LOT 10 - LACY MOVE-N ON 417 063G



LACY MARIE 8190 - DAM OF LOT 10



LACY LEGACY 6097 417 - SIRE OF LOT 10

10

LACY MOVE-N ON 417 063G

DOB: 9/15/19 Reg: 4237524 Tattoo: 063G A - 100% AR

LACY FHG LEGACY 6097
LACY LEGACY 6097 417
 LACY LAKOTA 122

BIEBER MAKE MIMI 7249
 LACY MS CHEROKEE 102M
 CCF GOLD BAR 0251
 RHRA MARTHA LC 140 509R

BW	IMF
89	3.29
AWW	REA
780	14.88

LACY CHEROKEE 128M
LACY MARIE 8190
 VDAR REBALAS 401

BFCK CHEROKEE CNYN 4912
 BUF CRK PNMARIE 1781
 BJR RAMBLER 5162
 GLACIER RB-LS

AYW	BF
1337	0.17
DMPPA	
103	

HB	GM	CED	BW	WW	YW	Milk	ME	HPG	CEM	Stay	Marb	YG	CW	REA	Fat
161	49	10	-0.4	68	101	30	-1	5	6	17	0.41	0.02	34	0.19	-0.01

Lacy Move-N On 417 063G is the lead off stud from the great Lacy Legacy 6097 417 sire group. 063G is a direct son of the great Lacy Marie 8190, a true producer and standout in the donor pen in Drexel. This powerful ET son of 8190 boasts an impressive weaning weight of 780 and a yearling weight of over 1330-pounds. Numerically he is balanced across the board, ranking top 20% WW, top 7% Milk, top 13% YG, top 9% CW, top 19% REA, and top 4% Fat. His phenotype, symmetry, and athletic build is what sets 063G into a league of his own. We anticipate for the daughters of Move-N On to leave a lasting impact that will help move our program further into the future. A true performance standout that is destined to make an impact. We plan to utilize his service in places throughout our program. Hang your hat on his type, his kind, and his unmatched quality. *Retaining 1/2 Semen Interest. Offering 1/2 Semen Interest and Full Possession.*



LOT 11 - MCL LEGACY 417 9515



LACY FHG LEGACY 6097 - GRANDSIRE OF LOT 11



LOT 12 - MCL LEGACY 417 9518

The Sons of Legacy

11

MCL LEGACY 417 9515



DOB: 9/1/19 Reg: 4242240 Tattoo: 9515 A - 100% AR

LACY FHG LEGACY 6097
LACY LEGACY 6097 417
 LACY LAKOTA 122

BIEBER MAKE MIMI 7249
 LACY MS CHEROKEE 102M
 CCF GOLD BAR 0251
 RHRA MARTHA LC 140 509R

BW	IMF
64	2.6
AWW	REA
618	11.66

LACY CORNERSTONE 069C
LACY MARIE 237 101E
 LACY MARIE 237

LSF SAGA 1040Y
 LACY MS ANNIE 6132
 BADLANDS NET WORTH 23U
 LACY MARIE 8190

AYW	BF
1144	0.2
DMPPA	
96	

HB	GM	CED	BW	WW	YW	Milk	ME	HPG	CEM	Stay	Marb	YG	CW	REA	Fat
192	47	15	-2.7	53	81	27	0	10	10	18	0.5	0.04	14	0.08	0.02

MCL Legacy 417 9515 is a top calving ease prospect that is sure to catch your eye. A smooth jointed, clean made herd sire prospect that is backed by the influence of Lacy Cornerstone 069C from the Marie 8190 tribe on his maternal side. He started with a 64-pound birth weight and boasts a top 17% CED with a negative BW EPD. Numerically he charts top 10% HB, top 25% Milk, top 6% CEM, top 12% Stay, top 28% Marb, and top 21% YG. Recommended for use on well managed heifers.

12

MCL LEGACY 417 9518



DOB: 9/2/19 Reg: 4242246 Tattoo: 9518 A - 100% AR

LACY FHG LEGACY 6097
LACY LEGACY 6097 417
 LACY LAKOTA 122

BIEBER MAKE MIMI 7249
 LACY MS CHEROKEE 102M
 CCF GOLD BAR 0251
 RHRA MARTHA LC 140 509R

BW	IMF
65	2.33
AWW	REA
612	13.37

FEDDES NORSE FIRE 7149
LACY BLOCKANA 7149 223
 RHRA Z-LINE LC 043 536R

5L DIRECT FIRE 1641-6443
 FEDDES BLOCKANA R11
 LSF LIGHT CANYON 3000N
 RHRA FLASH 616 043

AYW	BF
1108	0.28
DMPPA	
105	

HB	GM	CED	BW	WW	YW	Milk	ME	HPG	CEM	Stay	Marb	YG	CW	REA	Fat
190	49	12	0.3	67	96	33	1	7	8	19	0.56	-0.01	24	0.27	0.01

MCL Legacy 417 9518 is another member of the Lacy Legacy 6097 sire group that is backed by the Blockana tribe. He offers a sensible birth weight of 62-pounds, along with a WW Ratio of 102 and a YW Ratio of 102. He ranks top 10% HB, top 24% GM, top 21% WW, top 2% Milk, 10% STAY, top 16% Marb, top 9% YG, top 10% REA, and top 17% Fat. A smooth made, low birth weight bull that would be a suitable option for use on well-managed heifers.



LOT 13

MCL LEGACY 417 9526

13

MCL LEGACY 417 9526



DOB: 9/5/19 Reg: 4242252 Tattoo: 9526 A - 100% AR

LACY FHG LEGACY 6097
LACY LEGACY 6097 417
LACY LAKOTA 122

BIEBER MAKE MIMI 7249
LACY MS CHEROKEE 102M
CCF GOLD BAR 0251
RHRA MARTHA LC 140 509R

BW	IMF
68	2.62
AWW	REA
599	13.32

LACY OLY 554T 219
LACY ROBIN 238 413
LACY ROBIN 238

RED SSS OLY 554T
LACY TAMARA 0239
RED LAZY MC CC DETOUR 2W
LACY ROBIN 5023

AYW	BF
1016	0.32
DMPPA	
100	

HB	GM	CED	BW	WW	YW	Milk	ME	HPG	CEM	Stay	Marb	YG	CW	REA	Fat
233	45	17	-6.3	48	69	28	-2	6	10	25	0.4	0.02	0	0.04	0.03

MCL Legacy 417 9526 is a tremendous calving ease option from the Lacy Legacy 6097 417 sire group. His dam is a descendant of the Robin cow family that traces to RED SSS Oly 554T and RED Lazy MC CC Detour 2W, two individuals that have greatly impacted the Red Angus breed. 9526 offers a sensible 68-pound birth weight and ranks top 1% HB, top 4% CED, top 1% BW, top 20% Milk, top 4% CEM, top 1% STAY, and top 14% YG. Recommended for use on virgin heifers.

15

LACY LEGACY 417 092G



DOB: 9/2/19 Reg: 4237578 Tattoo: 092G A - 100% AR

LACY FHG LEGACY 6097
LACY LEGACY 6097 417
LACY LAKOTA 122

BIEBER MAKE MIMI 7249
LACY MS CHEROKEE 102M
CCF GOLD BAR 0251
RHRA MARTHA LC 140 509R

BW	IMF
69	2.36
AWW	REA
688	13.67

LSF SAGA 1040Y
LACY VERDALE 0235 085D
LACY VERDALE 0235

BECKTON EPIC R397 K
LSF MINOLA T7172 W9041
LACY LEGACY 8078
LACY LAKOTA 8210

AYW	BF
1251	0.24
DMPPA	
104	

HB	GM	CED	BW	WW	YW	Milk	ME	HPG	CEM	Stay	Marb	YG	CW	REA	Fat
167	46	17	-3	59	88	29	2	11	12	15	0.33	0.1	28	0.21	0.04

Lacy Legacy 417 092G is another standout calving ease prospect that is from the Legacy sire group. With a 69-pound actual birth weight, he spreads to a WW Ratio of 103 and a YW Ratio of 108. He ranks top 3% CED, top 26% BW, top 14% Milk, top 1% CEM, top 23% CW, and 16% REA. Recommended for use on heifers.

14

LACY LEGACY 417 081G



DOB: 9/6/19 Reg: 4237556 Tattoo: 081G A - 100% AR

LACY FHG LEGACY 6097
LACY LEGACY 6097 417
LACY LAKOTA 122

BIEBER MAKE MIMI 7249
LACY MS CHEROKEE 102M
CCF GOLD BAR 0251
RHRA MARTHA LC 140 509R

BW	IMF
61	2.91
AWW	REA
546	14.44

LSF SAGA 1040Y
LACY ROBIN 8080 081C
LACY ROBIN 8080

BECKTON EPIC R397 K
LSF MINOLA T7172 W9041
LCC MAJOR LEAGUE A502M
LACY TOWKANA 5096

AYW	BF
1109	0.34
DMPPA	
100	

HB	GM	CED	BW	WW	YW	Milk	ME	HPG	CEM	Stay	Marb	YG	CW	REA	Fat
187	45	18	-5	47	65	28	1	13	11	17	0.52	0	5	0.17	0.03

081G is a leading calving ease prospect that is from the Lacy Legacy 6097 417 sire group. With a 61-pound actual birth weight, 081G further solidifies his calving ease resume with a top 2% CED ranking, top 5% BW, top 16% HB, top 17% Milk, top 14% HPG, top 1% CEM, top 28% Stay, top 24% Marb, top 9% YG, and top 22% REA. A logical option for use on virgin heifers.



THE FALL YEARLING BULLS



LOT 17
LACY LEGACY 092E 097G

16

LACY LEGACY 417 087G

DOB: 9/4/19 Reg: 4237568 Tattoo: 087G A - 100% AR

LACY FHG LEGACY 6097
LACY LEGACY 6097 417
LACY LAKOTA 122

BIEBER MAKE MIMI 7249	BW	IMF
LACY MS CHEROKEE 102M	83	1.55
CCF GOLD BAR 0251	AWW	REA
RHRA MARTHA LC 140 509R	662	13.41
BJR MAKE MY DAY 981	AYW	BF
BIEBER SIRENA 6708	1172	0.22
LCC MAJOR LEAGUE A502M	DMPPA	103
LACY MS TILLY 194K		

BIEBER MAKE MIMI 7249
LACY SIRENA 8063
LACY ROBIN 5071

HB	GM	CED	BW	WW	YW	Milk	ME	HPG	CEM	Stay	Marb	YG	CW	REA	Fat
149	47	11	0	68	101	24	3	9	5	15	0.41	0.03	44	0.43	0.01

087G is a more performance-oriented son of Lacy Legacy 6097 417. He is a direct son of the matriarch Lacy Sirena 8063. He boasts a WW Ratio of 107 and a YW Ratio of 101. 8063 offers a MPPA of 103. Numerically 087G ranks top 18% WW, top 17% YG, top 1% CW, and top 3% REA. A performance oriented herd sire prospect with added performance and carcass merit.

17

LACY LEGACY 092E 097G

DOB: 9/22/19 Reg: 4237586 Tattoo: 097G A - 100% AR

LACY LEGACY 6097 417
LACY LEGACY 417 092E
LACY LANA 7025

LACY FHG LEGACY 6097	BW	IMF
LACY LAKOTA 122	63	2.72
TR JULIAN LT142	AWW	REA
LACY MIS MIMI 5038	741	12.6
5L SIGNATURE 5615	AYW	BF
LACY LANA 024	1220	0.26
CCF GOLD BAR 0251	DMPPA	103
LACY MIS MIMI 6193		

LACY SIGNATURE 459
LACY LAKOTA 8105 055E
LACY LAKOTA 8105

HB	GM	CED	BW	WW	YW	Milk	ME	HPG	CEM	Stay	Marb	YG	CW	REA	Fat
186	49	18	-0.7	71	108	28	4	13	11	15	0.44	-0.03	31	0.46	0.01

Lacy Legacy 092E 097G is a massive footed, stout boned, wide based, performance driven son of Lacy Legacy 417 092E, a leading herd sire in the Nieder Livestock Company program at Amsterdam, Missouri. 097G was raised by a hard working two-year-old dam that is a direct daughter of the iconic Lacy Lakota 8105, the dam of the \$32,000 Lacy Collusion 115F. 097G ranks top 19% HB, top 2% CED, top 13% WW, top 22% YW, top 20% Milk, top 12% HPG, top 2% CEM, top 7% YG, top 15% CW, and top 2% REA. He offers an impressive spread from 63-pounds are birth to a WW of 741 pounds and a WW Ratio of 108, and a YW Ratio of 107. His combined CED and actual birth weight makes him a logical choice for use on well-managed heifers.



LACY SIRENA 8063 - DAM OF LOT 16

18

LACY LEGACY 092E 098G

DOB: 9/15/19 Reg: 4237588 Tattoo: 098G A - 100% AR

LACY LEGACY 6097 417
LACY LEGACY 417 092E
LACY LANA 7025

LACY FHG LEGACY 6097	BW	IMF
LACY LAKOTA 122	64	3.06
TR JULIAN LT142	AWW	REA
LACY MIS MIMI 5038	664	12.48
5L SIGNATURE 5615	AYW	BF
LACY LANA 024	1198	0.26
LACY LEGACY 8078	DMPPA	99
LACY LAKOTA 8210		

LACY SIGNATURE 459
LACY VERDALE 0235 100E
LACY VERDALE 0235

HB	GM	CED	BW	WW	YW	Milk	ME	HPG	CEM	Stay	Marb	YG	CW	REA	Fat
179	49	12	0.1	64	102	27	4	16	7	16	0.48	0.04	31	0.29	0.02

Lacy Legacy 092E 098G is a member of the Lacy Legacy 417 092E sire group. He offers a sensible birthweight of 64-pounds and a YW Ratio of 105. Numerically he ranks top 23% HB, top 21% GM, top 25% Milk, top 3% HPG, top 28% Marb, top 19% YG, top 16% CW, and top 8% REA. A potential option for use on well-managed heifers.

THE FALL YEARLING BULLS



LOT 19 - LACY DIVERSIFIED 459 101G



LACY SIGNATURE 459 - SIRE OF LOTS 19-22

19

LACY DIVERSIFIED 459 101G

DOB: 9/27/19 Reg: 4237594 Tattoo: 101G A - 100% AR

5L SIGNATURE 5615
LACY SIGNATURE 459
LACY LANA 024

5L NORSEMAN KING 2291
5L RUBY 199-01
BECKTON NEBULA P P707
LACY SIRENA 8063

BW	IMF
74	2.21
AWW	REA
630	14.08

CCF GOLD BAR 0251
LACY LAKOTA 7108
LACY MISTILLY 195L

LCHMN GOLD ROBBER 1909E
GMRA PRINCESS 720
BJR LOGGER 8113
LACY RUBY 30C

AYW	BF
1140	0.16
DMPPA	
98	

HB	GM	CED	BW	WW	YW	Milk	ME	HPG	CEM	Stay	Marb	YG	CW	REA	Fat
226	47	15	-2.2	53	87	23	0	17	8	21	0.35	0.08	31	0.22	0.02

Lacy Diversified 459 101G is a standout from the Lacy Signature 459 sire group, backed by the influence of the great CCF Gold Bar 0251. 101G offers a sensible birth weight of 74 pounds yet spreads to a 102 WW Ratio. He is a smooth jointed, long sided bull that offers skeletal quality and an athletic build. He boasts an impressive number profile ranking among the elite 1% of the breed for HB, top 17% CED, top 1% HPG, top 2% STAY, top 24% CEM, top 17% CW, and top 15% REA. Recommended for use on heifers.

21

LACY SIGNATURE 459 094G

DOB: 10/12/19 Reg: 4237582 Tattoo: 094G A - 100% AR

5L SIGNATURE 5615
LACY SIGNATURE 459
LACY LANA 024

5L NORSEMAN KING 2291
5L RUBY 199-01
BECKTON NEBULA P P707
LACY SIRENA 8063

BW	IMF
81	3.34
AWW	REA
620	13.72

LCC MAJOR LEAGUE A502M
LACY ROBIN 8080
LACY TOWKANA 5096

BFCK CHEROKEE CNYN 4912
KRN REBA'S ROBIN
BJR MAKE MY DAY 981
LACY MS CHEROKEE 404N

AYW	BF
1189	0.28
DMPPA	
101	

HB	GM	CED	BW	WW	YW	Milk	ME	HPG	CEM	Stay	Marb	YG	CW	REA	Fat
156	50	11	-0.1	65	112	24	4	13	5	14	0.43	0.09	32	0.1	0.01

094G combines the best from the 5L Signature 5616 and LCC Major League A502M influence. He is a stout ended, long sided, powerful individual that will sire a set of heavy weaning feeder cattle. Numerically he ranks top 11% GM, top 14% YW, top 6% ADG, top 14% HPG, top 13% CW, and top 26% Fat.

20

LACY SIGNATURE 459 093G

DOB: 9/22/19 Reg: 4237580 Tattoo: 093G A - 100% AR

5L SIGNATURE 5615
LACY SIGNATURE 459
LACY LANA 024

5L NORSEMAN KING 2291
5L RUBY 199-01
BECKTON NEBULA P P707
LACY SIRENA 8063

BW	IMF
69	3.36
AWW	REA
568	12.4

CCF GOLD BAR 0251
LACY LAKOTA 122
RHRA MARTHA LC 140 509R

LCHMN GOLD ROBBER 1909E
GMRA PRINCESS 720
LSF LIGHT CANYON 3000N
RHRA MARTHA 6990 755

AYW	BF
1185	0.28
DMPPA	
101	

HB	GM	CED	BW	WW	YW	Milk	ME	HPG	CEM	Stay	Marb	YG	CW	REA	Fat
176	47	13	-1.9	47	74	26	2	13	7	17	0.49	-0.1	28	0.42	-0.02

093G is a Lacy Signature 459 son that is from a hardworking 9-year-old Gold Bar daughter that has an MPPA of 101. 093G offers a sensible 69-pound actual birth weight and spreads to a 102 WW Ratio and 105 YW Ratio. He charts top 29% HB, top 32% CED, top 13% HPG, top 29% Marb, top 2% YG, top 25% CW, top 3% REA, and top 2% Fat. Recommended for use on well-managed heifers.

22

LACY SIGNATURE 459 102G

DOB: 9/24/19 Reg: 4237596 Tattoo: 102G B - 87.5% AR

5L SIGNATURE 5615
LACY SIGNATURE 459
LACY LANA 024

5L NORSEMAN KING 2291
5L RUBY 199-01
BECKTON NEBULA P P707
LACY SIRENA 8063

BW	IMF
77	1.75
AWW	REA
593	12.93

NSF LEADING EDGE N013
LACY MIS MIMI 7165
LACY MS LASS 152M

BIEBER MAKE MIMI 7249
MS NSF KING O MAT L222
BUF CRK VAQUERO 3003
DL VICTORIA 22D

AYW	BF
1119	0.33
DMPPA	
98	

HB	GM	CED	BW	WW	YW	Milk	ME	HPG	CEM	Stay	Marb	YG	CW	REA	Fat
174	49	16	-0.1	56	90	22	-1	14	9	14	0.44	-0.01	9	0.01	0

Lacy Signature 459 102G is another 459 son that is backed by a productive 13-year-old dam that is sired by NSF Leading Edge N013. He offers a sensible 77-pound actual birth weight while ranking top 10% CED. A balanced heifer safe option that is sure to add quality and longevity to your cowherd. Recommended for use on well-managed heifers.

THE FALL YEARLING BULLS



LOT 23
MCL ENDORSEMENT 9517

23

MCL ENDORSEMENT 9517

DOB: 9/2/19 Reg: 4242244 Tattoo: 9517 B - 96.9% AR

LSF SAGA 1040Y
LACY ENDORSEMENT 092C
LACY SIRENA 8063

BECKTON EPIC R397 K
LSF MINOLA T7172 W9041
BIEBER MAKE MIMI 7249
LACY ROBIN 5071

BW	IMF
88	2.55
AWW	REA
681	12.57

BIEBER STORMER 2433
LACY HAZEL 347 044D
LACY HAZEL 9020 347

LSF CYCLONE 9934W
BIEBER SUE 359X
LACY SUMMIT 9020
LACY MIS RITA 5094

AYW	BF
1202	0.23
DMPPA	
103	

25

MCL CORNERSTONE 9531

DOB: 9/8/19 Reg: 4242260 Tattoo: 9531 A - 100% AR

LSF SAGA 1040Y
LACY CORNERSTONE 069C
LACY MS ANNIE 6132

BECKTON EPIC R397 K
LSF MINOLA T7172 W9041
LACY LINE BACKER 123H
VDAR REBALAS 401

BW	IMF
76	3.14
AWW	REA
568	11.97

LACY GOLD BAR 1120
LACY LANA 991 493
LACY LANA 991

CCF GOLD BAR 0251
RHRA Z-LINE LC 043 536R
LACY CODY 9006
LACY KAREN 9207

AYW	BF
1035	0.18
DMPPA	
103	

HB	GM	CED	BW	WW	YW	Milk	ME	HPG	CEM	Stay	Marb	YG	CW	REA	Fat
177	49	10	1.2	69	109	27	3	14	6	17	0.44	0.16	33	0	0.02

Lacy Endorsement 092C is the powerful son of LSF Saga 1040Y that is from the Lacy Sirena 8063 matriarch. Endorsement 092C is now employed in the Prairie Creek Ranch program in Richards, Missouri. 9517 is a stout featured, shapely herd sire prospect that offers a 101 WW Ratio and a 102 YW Ratio. 9517 ranks top 18% WW, top 22% YW, top 23% Milk, top 11% HPG, and top 13% CW. An excellent option for use on production age females to increase weaning weights.

HB	GM	CED	BW	WW	YW	Milk	ME	HPG	CEM	Stay	Marb	YG	CW	REA	Fat
144	47	12	-1.9	45	76	31	1	10	6	14	0.43	0.04	0	0.01	0.03

MCL Cornerstone 9531 is another Cornerstone son that is from a productive Gold Bar dam with an MPPA of 103. He ranks top 5% Milk and top 22% YG. A low birth weight bull that offers a double digit CED and negative BW EPD. A suitable option for use on well-managed heifers.

24

MCL CORNERSTONE 9500

DOB: 8/26/19 Reg: 4242228 Tattoo: 9500 A - 100% AR

LSF SAGA 1040Y
LACY CORNERSTONE 069C
LACY MS ANNIE 6132

BECKTON EPIC R397 K
LSF MINOLA T7172 W9041
LACY LINE BACKER 123H
VDAR REBALAS 401

BW	IMF
50	3.44
AWW	REA
568	12.66

5L SIGNATURE 5615
LACY RUBY 8054 489
LACY LAKOTA 8054

5L NORSEMAN KING 2291
5L RUBY 199-01
CCF GOLD BAR 0251
LACY LARKISA 5057

AYW	BF
1089	0.26
DMPPA	
95	

HB	GM	CED	BW	WW	YW	Milk	ME	HPG	CEM	Stay	Marb	YG	CW	REA	Fat
172	45	16	-4.8	54	82	26	-1	12	10	16	0.34	0.12	6	-0.03	0.05

MCL Cornerstone 9500 is a top calving ease prospect that is sired by Lacy Cornerstone 069C and from the 5L Signature 5615 influence on his maternal side. He ranks top 8% CED, top 6%, top 25% HPG, and top 6% CEM. Recommended for use on heifers.

26

LACY CORNERSTONE 056G

DOB: 9/1/19 Reg: 4237512 Tattoo: 056G A - 100% AR

LSF SAGA 1040Y
LACY CORNERSTONE 069C
LACY MS ANNIE 6132

BECKTON EPIC R397 K
LSF MINOLA T7172 W9041
LACY LINE BACKER 123H
VDAR REBALAS 401

BW	IMF
80	2.51
AWW	REA
646	12.76

CCF GOLD BAR 0251
LACY LAKOTA 7091
LACY MS REBA 115M

LCHMN GOLD ROBBER 1909E
GMRA PRINCESS 720
LCHMN GRANDCANYON 1244G
LACY ANNA HW 122K

AYW	BF
1180	0.26
DMPPA	
102	

HB	GM	CED	BW	WW	YW	Milk	ME	HPG	CEM	Stay	Marb	YG	CW	REA	Fat
184	47	13	-0.2	61	92	27	0	13	8	17	0.4	0.08	16	-0.07	0.01

Lacy Cornerstone 056G is backed by Lacy Lakota 7091, a 13-year-old dam that boasts a 102 MPPA. He boasts a WW Ratio of 105 and a YW Ratio of 101. He ranks top 34% HB, top 21% Milk, top 20% HPG, top 25% CEM, and top 25% Fat.

THE FALL YEARLING BULLS



LACY FULL TANK 006D - SIRE OF LOT 27



LACY SAGA 090D - SIRE OF LOTS 28-29

27

LACY FULL TANK 115G

DOB: 9/23/19 Reg: 4237620 Tattoo: 115G A - 100% AR

LSF SAGA 1040Y
LACY FULL TANK 006D
LACY LAKOTA 8060

BECKTON EPIC R397 K
LSF MINOLA T7172 W9041
CCF GOLD BAR 0251
LACY SIRENA 6053

BW	IMF
66	2.46
AWW	REA
643	13.31

5L BLAZIN RED 1354-6166
LACY REBA 0116
RHRA JEWEL LC 013 538R

5L BLAZIN HOB0 404-5654
5L REBA 60-1354
LSF LIGHT CANYON 3000N
RHRA FLASH 548 013

AYW	BF
1161	0.2
DMPPA	
100	

HB	GM	CED	BW	WW	YW	Milk	ME	HPG	CEM	Stay	Marb	YG	CW	REA	Fat
177	46	15	-2.2	53	81	23	-1	15	7	16	0.45	0.07	25	0.2	0.03

Lacy Full Tank 115G is the lone son of Lacy Full Tank 006D that is backed by Lacy Reba 0116, a top daughter of 5L Blazin Red 1354-6166. He offers a 66-pound birth weight that ranks top 17% CED, top 4% HPG, and top 18% REA. A tremendous low birth weight herd sire prospect that is a suitable option for use on heifers.

29

LACY SAGA 090D 089G

DOB: 9/6/19 Reg: 4237572 Tattoo: 089G A - 100% AR

LSF SAGA 1040Y
LACY SAGA 090D
LACY LAKOTA 8105

BECKTON EPIC R397 K
LSF MINOLA T7172 W9041
CCF GOLD BAR 0251
LACY MIS MIMI 6193

BW	IMF
81	2.96
AWW	REA
701	13.64

LACY FHG LEGACY 6097
LACY MARIE 8190 063C ET
LACY MARIE 8190

BIEBER MAKE MIMI 7249
LACY MS CHEROKEE 102M
LACY CHEROKEE 128M
VDAR REBALAS 401

AYW	BF
1293	0.27
DMPPA	
106	

HB	GM	CED	BW	WW	YW	Milk	ME	HPG	CEM	Stay	Marb	YG	CW	REA	Fat
178	50	9	2.8	80	126	28	3	10	5	17	0.26	-0.03	34	0.43	0

Lacy Saga 090D 089G is a performance standout from the Marie 8190 cow line. He offers a WW Ratio of 113 and a YW Ratio of 111. He charts top 24% HB, top 16% GM, top 2% WW, top 3% YW, top 9% ADG, top 15% Milk, top 22% Stay, top 6% YG, top 10% CW, top 3% REA, and top 12%. *Retaining 1/2 Semen Interest*

28

LACY SAGA 090D 086G

DOB: 9/4/19 Reg: 4237566 Tattoo: 086G B - 93.8% AR

LSF SAGA 1040Y
LACY SAGA 090D
LACY LAKOTA 8105

BECKTON EPIC R397 K
LSF MINOLA T7172 W9041
CCF GOLD BAR 0251
LACY MIS MIMI 6193

BW	IMF
70	1.87
AWW	REA
541	12.41

BIEBER MAKE MIMI 7249
LACY SIRENA 8058
LACY SUNFLOWER 6079

BJR MAKE MY DAY 981
BIEBER SIRENA 6708
LACY FULLBACK 103L
LACY 8

AYW	BF
1065	0.2
DMPPA	
105	

HB	GM	CED	BW	WW	YW	Milk	ME	HPG	CEM	Stay	Marb	YG	CW	REA	Fat
171	48	13	-0.8	67	106	26	4	11	7	16	0.36	0.07	28	0.27	0.03

Lacy Saga 090D 086G is sired by Lacy Saga 090D, a leading son of LSF Saga 1040Y. 086G is a top son of Lacy Sirena 8058, a productive 12-year-old dam that boasts an MPPA of 105. He ranks top 21% WW, top 23% YW, top 29% ADG, top 26%, and top 11%.

30

MCL CINCH 9527

DOB: 9/5/19 Reg: 4242254 Tattoo: 9527 B - 93.8% AR

LSF SAGA 1040Y
PIE CINCH 4126
TKP BONNE BEL 110

BECKTON EPIC R397 K
LSF MINOLA T7172 W9041
HXC CONQUEST 4405P
TKP BONNE BEL 9031

BW	IMF
78	2.15
AWW	REA
593	11.42

LACY SUMMIT 9020
LACY LAKOTA 8190 429
LACY MIS MIMI 7165

5L SUMMIT 1145-6327
LACY ROBIN 5023
NSF LEADING EDGE N013
LACY MS LASS 152M

AYW	BF
1116	0.3
DMPPA	
103	

HB	GM	CED	BW	WW	YW	Milk	ME	HPG	CEM	Stay	Marb	YG	CW	REA	Fat
178	47	10	-1.7	68	100	28	-2	12	6	18	0.25	0.07	23	0.06	0.01

MCL Cinch 9527 is a performance standout by PIE Cinch 4126 that is backed by a daughter of Lacy Summit 9020. Numerically he ranks top 17% WW, top 34% YW, top 14%, top 27% Stay, top 28% YG, and 21% Fat. A performance oriented herd sire prospect that boasts a YW Ratio of 103.



LOT 31 - LACY FOUNDATION 053G



LACY LAKOTA 9049 - DAM OF LOT 31



LACY FOUNDATION 448 - SIRE OF LOT 31

31

LACY FOUNDATION 053G

DOB: 9/1/19 Reg: 4237506 Tattoo: 053G A - 100% AR

LACY CHATEAU 6089
LACY FOUNDATION 448
 LACY MS ANNIE 6132

GLACIER CHATEAU 744
 LACY MS CHEROKEE 160M
 LACY LINE BACKER 123H
 VDAR REBALAS 401

BW	IMF
78	2.04
AWW	REA
627	14.66

CCF GOLD BAR 0251
LACY LAKOTA 9049
 LACY CALI 5050

LCHMN GOLD ROBBER 1909E
 GMRA PRINCESS 720
 LACY CHEROKEE 327N
 LACY MS SUNFLOWER 17M

AYW	BF
1201	0.39
DMPPA	
103	

HB	GM	CED	BW	WW	YW	Milk	ME	HPG	CEM	Stay	Marb	YG	CW	REA	Fat
167	46	11	-1.5	52	87	28	1	12	7	17	0.2	0.14	20	0.02	0.04

Lacy Foundation 053G is a powerful, dense made son of Lacy Foundation 448. 053G is backed by the influential CCF Gold Bar 0251 on his maternal side from an 11-year-old dam that boasts an MPPA of 103. 053G offers a sensible 78-pound actual birth weight and spreads to a 102 WW Ratio and 103 YW Ratio. He ranks top 20% Milk, top 27% DMI, and top 28% HPG.



LACY SIRENA 8063 - MATERNAL GRANDDAM OF LOT 32

32

MCL AUTHORITY 9556

DOB: 11/3/19 Reg: 4242270 Tattoo: 9556 A - 100% AR

LACY CHATEAU 6089
LACY FOUNDATION 448
 LACY MS ANNIE 6132

GLACIER CHATEAU 744
 LACY MS CHEROKEE 160M
 LACY LINE BACKER 123H
 VDAR REBALAS 401

BW	IMF
76	2.82
AWW	REA
729	13.37

BECKTON NEBULA P P707
LACY LANA 024
 LACY SIRENA 8063

BECKTON NEBULA M045
 BECKTON LANA M809 EP
 BIEBER MAKE MIMI 7249
 LACY ROBIN 5071

AYW	BF
1238	0.26
DMPPA	
100	

HB	GM	CED	BW	WW	YW	Milk	ME	HPG	CEM	Stay	Marb	YG	CW	REA	Fat
153	50	9	0.9	80	130	24	4	11	4	15	0.26	0.12	30	0.14	0.03

MCL Authority 9556 is a performance-oriented stud that is sired by Lacy Foundation 448. His dam is a productive 10-year-old dam that is a direct daughter of Beckton Nebula P P707. He charts top 17% GM, top 2% WW, top 2% YW, top 2% ADG, top 17% CW, and top 26% REA. Time tested genetics that will add pay weight to your bottom line!



LACY FOUNDATION 448 - SIRE OF LOTS 32 - 34

33

LACY FOUNDATION 088G

DOB: 9/6/19 Reg: 4237570 Tattoo: 088G A - 100% AR

LACY CHATEAU 6089
LACY FOUNDATION 448
 LACY MS ANNIE 6132

GLACIER CHATEAU 744
 LACY MS CHEROKEE 160M
 LACY LINE BACKER 123H
 VDAR REBALAS 401

BW	IMF
84	2.78
AWW	REA
585	12.84

RED LAZY MC CC DETOUR 2W
LACY ROBIN 238
 LACY ROBIN 5023

RED RMJ REDMAN 1T
 RED LAZY MC BESS 12S
 LCC MAJOR LEAGUE A502M
 VDAR REBALAS 401

AYW	BF
1147	0.26
DMPPA	
100	

HB	GM	CED	BW	WW	YW	Milk	ME	HPG	CEM	Stay	Marb	YG	CW	REA	Fat
172	49	6	1.4	66	107	27	-2	6	4	19	0.18	0.04	21	0.15	0.01

Lacy Foundation 088G is another stout made herd sire prospect by Lacy Foundation 448 that is from a hard-working daughter of Red Lazy MC CC Detour 2W. He ranks top 23% HB, top 29% GM, top 23% WW, top 21% YW, top 22% ADG, top 26% Milk, top 4% Stay, top 19% YG, and top 23% REA. Balanced and proven genetics!

34

MCL FOUNDATION 9546

DOB: 9/22/19 Reg: 4242266 Tattoo: 9546 B - 87.5% AR

LACY CHATEAU 6089
LACY FOUNDATION 448
 LACY MS ANNIE 6132

GLACIER CHATEAU 744
 LACY MS CHEROKEE 160M
 LACY LINE BACKER 123H
 VDAR REBALAS 401

BW	IMF
88	2.29
AWW	REA
606	13.1

LACY SUMMIT 9020
LACY SUNFLOWER 309
 LACY SUNFLOWER 389N

5L SUMMIT 1145-6327
 LACY ROBIN 5023
 LACY FULLBACK 103L
 DL VICKI 45W 190K

AYW	BF
1051	0.22
DMPPA	
105	

HB	GM	CED	BW	WW	YW	Milk	ME	HPG	CEM	Stay	Marb	YG	CW	REA	Fat
162	48	6	3.5	72	111	26	1	9	4	17	0.18	0	23	0.4	0.03

MCL Foundation 9546 is sired by the Lacy Foundation 448 stud, a long sided and powerful individual in his own right. He boasts a WW Ratio of 101 while ranking top 12% WW, top 18% YW, top 10% YG, and top 3% REA.



LOT 35 - MCL GOLD BAR 400 9508

MCL Gold Bar 400 9508 is a dark red, deep sided son of Lacy Gold Bar 0251 400 that is from the Lana tribe. He offers a sensible 70-pound actual birth weight to accompany his top 27% CED and negative BW EPD, making him a logical choice for use on well-managed heifers. He ranks top 16% GM, top 8% CEM, top 6% Marb, top 3% YG, top 10% CW, top 2% REA, and top 3% Fat. A heifer safe option with maternal strength and exceptional carcass merit.

35

MCL GOLD BAR 400 9508



DOB: 8/30/19 Reg: 4242236 Tattoo: 9508 A - 100% AR

CCF GOLD BAR 0251
LACY GOLD BAR 0251 400
LACY REBALAS 35L

LCHMN GOLD ROBBER 1909E
GMRA PRINCESS 720
SHOCO RAMBLE 72
BJR TERA 117-770

BW	IMF
70	4.11
AWW	REA
665	13.93

LACY FHG LEGACY 6097
LACY LANA 7025 091D
LACY LANA 7025

BIEBER MAKE MIMI 7249
LACY MS CHEROKEE 102M
TR JULIAN LT142
LACY MIS MIMI 5038

AYW	BF
1225	0.34
DMPPA	
97	

HB	GM	CED	BW	WW	YW	Milk	ME	HPG	CEM	Stay	Marb	YG	CW	REA	Fat
174	50	14	-1.8	64	95	27	3	10	9	15	0.68	-0.08	34	0.46	-0.01



LACY GOLD BAR 0251 400 - SIRE OF LOT 35

THE FALL YEARLING BULLS



LOT 36
LACY GOLD BAR 1120 077G

36

LACY GOLD BAR 1120 077G

DOB: 9/25/19 Reg: 4237550 Tattoo: 077G 3 - 50% AR 50%

CCF GOLD BAR 0251
LACY GOLD BAR 1120
RHRA Z-LINE LC 043 536R

LCHMN GOLD ROBBER 1909E
GMRA PRINCESS 720
LSF LIGHT CANYON 3000N
RHRA FLASH 616 043

BW	IMF
83	2.3
AWW	REA
716	13.84
AYW	BF
1322	0.34
DMPPA	



LACY GOLD BAR 1120 - SIRE OF LOTS 36 - 38

HB	GM	CED	BW	WW	YW	Milk	ME	HPG	CEM	Stay	Marb	YG	CW	REA	Fat
119	53	12	-0.8	56	102	27	-5	14	6	7	0.68	0.18	26	0	0.04

Lacy Gold Bar 1120 077G is a powerfully constructed category 3 Red Angus herd sire prospect that is sired by the great Lacy Gold Bar 1120. He is dense in her basic body type, wide chested, masculine, and offers a rugged look. Numerically he ranks top 1% GM, top 25% YW, top 5% ADG, top 11% DMI, top 23% Milk, top 18% ME, top 7% HPG, and top 5% Marb. A powerful individual that is sure to add pay weight to your next calf crop!

37

LACY GOLD BAR 1120 114G

DOB: 9/20/19 Reg: 4237618 Tattoo: 114G 3 - 50% AR 50%

CCF GOLD BAR 0251
LACY GOLD BAR 1120
RHRA Z-LINE LC 043 536R

LCHMN GOLD ROBBER 1909E
GMRA PRINCESS 720
LSF LIGHT CANYON 3000N
RHRA FLASH 616 043

BW	IMF
79	1.82
AWW	REA
639	10.96
AYW	BF
1111	0.22
DMPPA	

HB	GM	CED	BW	WW	YW	Milk	ME	HPG	CEM	Stay	Marb	YG	CW	REA	Fat
136	48	13	-0.8	42	68	27	-5	14	8	11	0.68	0.2	18	-0.19	0.04

Lacy Gold Bar 1120 114G is a powerful category 3 Red Angus herd sire prospect that is sired by Lacy Gold Bar 1120. He ranks top 4% DMI, top 23% Milk, top 18% ME, top 6% HPG, and top 5% Marb. A maternally focused, low birth weight bull that boasts a sensible birth weight to accompany his smooth design.

38

LACY GOLD BAR 1120 120G

DOB: 10/22/19 Reg: 4237630 Tattoo: 120G A - 100% AR

CCF GOLD BAR 0251
LACY GOLD BAR 1120
RHRA Z-LINE LC 043 536R

LCHMN GOLD ROBBER 1909E
GMRA PRINCESS 720
LSF LIGHT CANYON 3000N
RHRA FLASH 616 043

BW	IMF
82	2.5
AWW	REA
634	13.38
AYW	BF
1225	0.31
DMPPA	97

FEDDES MONTY 9137
LACY BLOCKANA 9137 208
LACY MS ANNIE 7020

FEDDES DIRECT NORS 7130
FEDDES BLOCKANA 041
LACY LINE BACKER 123H
TR LANA RT533

HB	GM	CED	BW	WW	YW	Milk	ME	HPG	CEM	Stay	Marb	YG	CW	REA	Fat
186	47	10	-0.4	49	78	32	2	13	6	19	0.46	0.16	14	-0.18	0.03

120G leads off the Lacy Gold Bar 1120 sire group. He is from the Lacy Blockana 9137 208 matron. He charts top 18% HB, top 21% DMI, top 3% Milk, top 19% HPG, and top 8% Stay. He is backed by balanced and proven genetics that you can count on!

THE FALL YEARLING BULLS



LOT 39 - MCL MALBEC 9507



RED U2 MALBEC 195D - SIRE OF LOT 39 & 40

39

MCL MALBEC 9507

DOB: 8/30/19 Reg: 4242234 Tattoo: 9507 A - 100% AR

RED U-2 RECKONING 149A
RED U2 MALBEC 195D
RED U-2 MABEL 60A

RED U-2 RECON 192Y
RED U-2 ANEXA 271Y
RED MINBURN COPENHAGEN 3Y
RED U-2 MABEL 7061T

BW	IMF
71	2.53
AWW	REA
650	10.43

LACY GOLD BAR 1120
LACY LANA 024 132D
LACY LANA 024

CCF GOLD BAR 0251
RHRA Z-LINE LC 043 536R
BECKTON NEBULA P P707
LACY SIRENA 8063

AYW	BF
1091	0.2
DMPPA	
94	

HB	GM	CED	BW	WW	YW	Milk	ME	HPG	CEM	Stay	Marb	YG	CW	REA	Fat
204	49	16	-4.8	47	80	27	-8	12	10	18	0.53	0	1	-0.07	0

MCL Malbec 9507 leads off the impressive sire group by RED U2 Malbec 195D, a leading son of the great RED U2 Reckoning 149A that is a member of the illustrious line-up at Genex. Malbec is a tremendously deep-bodied, masculine, good-looking bull. Malbec offers a completely Canadian pedigree and low birth weight. Malbec was a standout at U2 Ranch in Alberta exhibiting outstanding Angus character, dark red color and skeletal soundness all the way to the ground. 9507 combines the influence of Lacy Gold Bar 1120 with these elite Canadian genetics to form a unique genetic combination that exemplifies form and function. He charts top 5% HB, top 7% CED, top 6% BW, top 18% DMI, top 7% ME, top 6% CEM, top 19% Marb, and top 9% YG. This combined with his 71-pound actual birth weight makes him a suitable option for use on heifers.

Retaining 1/2 Semen Interest. Offering 1/2 Semen Interest and Full Possession.

40

MCL MALBEC 9520

DOB: 9/3/19 Reg: 4242248 Tattoo: 9520 A - 100% AR

RED U-2 RECKONING 149A
RED U2 MALBEC 195D
RED U-2 MABEL 60A

RED U-2 RECON 192Y
RED U-2 ANEXA 271Y
RED MINBURN COPENHAGEN 3Y
RED U-2 MABEL 7061T

BW	IMF
85	1.84
AWW	REA
624	11.59

LACY SIGNATURE 459
LACY LAKOTA 330 119D
LACY LAKOTA 0251 330

5L SIGNATURE 5615
LACY LANA 024
CCF GOLD BAR 0251
LACY MARIE 7148

AYW	BF
1107	0.22
DMPPA	
97	

HB	GM	CED	BW	WW	YW	Milk	ME	HPG	CEM	Stay	Marb	YG	CW	REA	Fat
202	47	13	-1.2	48	78	25	-9	11	10	19	0.47	0.11	10	-0.13	0.02

MCL Malbec 9520 is another standout son from the Red U2 Malbec 195D sire group. He is from a hard-working young female that is sired by Lacy Signature 459. Numerically she ranks top 6% HB, top 32% CED, top 21% DMI, top 5% ME, top 3% CEM, top 10% Stay, and top 29% Marb. The Malbec sire group continues to impress even the most critical cattlemen across North America.

41

LACY RIGHT KIND A345 051G

DOB: 8/27/19 Reg: 4237502 Tattoo: 051G 3 - 75% AR

BUF CRK THE RIGHT KIND U199
C-BAR RIGHT KIND A345
BROWN MS BIG SKY U7877

BUF CRK LANCER R017
BUF CRK SHOSHONE R353
FEDDES BIG SKY R9
BROWN C- JOLENE S605

BW	IMF
58	1.25
AWW	REA
673	13.38

LACY LEGACY 6097 469
LACY 704

LACY FHG LEGACY 6097
LACY LAKOTA 9049

AYW	BF
1077	0.13

DMPPA
99

HB	GM	CED	BW	WW	YW	Milk	ME	HPG	CEM	Stay	Marb	YG	CW	REA	Fat
133	47	13	-3.7	55	78	24	-3	13	8	11	0.49	0	13	0.27	0.03

Lacy Right Kind A345 051G is a top calving ease prospect among the offering that is the lone son of C-Bar Right Kind A345. He offers an actual birth weight of 58-pounds, while ranking top 38% CED, top 15% BW, top 18% DMI, top 23% ME, top 14% HPG, top 29% Marb, and top 10% REA. 051G is a smooth made category 3 Red Angus bull that is recommended for use on heifers.

42

MCL 1776 9532

DOB: 9/8/19 Reg: 4242272 Tattoo: 9532 A - 100% AR

5L INDEPENDENCE 560-298Y
LACY 1776 002D
LACY ANNIE 405

BUF CRK THE RIGHT KIND U199
5L BLACK ADINA 525-560
LACY FHG LEGACY 6097
LACY MATTIE 115

BW	IMF
78	3.27
AWW	REA
673	12.87

LACY SIGNATURE 459
LACY LAKOTA 8105 069E
LACY LAKOTA 8105

5L SIGNATURE 5615
LACY LANA 024
CCF GOLD BAR 0251
LACY MIS MIMI 6193

AYW	BF
1116	0.31
DMPPA	
100	

HB	GM	CED	BW	WW	YW	Milk	ME	HPG	CEM	Stay	Marb	YG	CW	REA	Fat
179	49	12	-0.3	70	112	25	3	13	6	17	0.4	0.12	35	0.1	0.02

MCL 1776 9532 is a top son of Lacy 1776 002D that is from one of the most proven and prolific cow families in the Lacy's Red Angus breeding program. His dam, Lacy Lakota 8105 069E, is a hard-working daughter of 8105 that is sired by Lacy Signature 459. Numerically he ranks top 16% WW, top 17% YW, top 21% ADG, top 15% HPG, and top 8% CW. A true standout with a moderate birthweight that descends from one of the most proven cow lines in the history of the program!



LOT 43 - LACY FULL TORQUE 021G

Lacy Full Torque 021G leads off the powerful age advantage bull division of the 2020 offering. He is a powerful son of the great Lacy 1776 002D and backed by the influential Lacy Lakota 8105, his maternal granddam and the dam of the \$32,000 Lacy Collusion 115F. 8105 has become a staple in the donor pen at Drexel, Missouri due to her consistency. He ranks top 5% GM, top 3% WW, top 2% YW, top 2% ADG, top 3% HPG, top 5% CW, top 16% REA, and top 10% Fat. A unique opportunity to tie to the 8105 influence, a cow family you can hang your hat on!

43

LACY FULL TORQUE 021G

DOB: 3/2/19 Reg: 4086822 Tattoo: 021G A - 100% AR

5L INDEPENDENCE 560-298Y
LACY 1776 002D
 LACY ANNIE 405

BUF CRK THE RIGHT KIND U199
 5L BLACK ADINA 525-560
 LACY FHG LEGACY 6097
 LACY MATTIE 115

BW	IMF
84	2.28
AWW	REA
728	13.94
AYW	BF
1302	0.21
DMPPA	
99	

LSF SAGA 1040Y
LACY LAKOTA 8105 084C
 LACY LAKOTA 8105

BECKTON EPIC R397 K
 LSF MINOLA T7172 W9041
 CCF GOLD BAR 0251
 LACY MIS MIMI 6193

HB	GM	CED	BW	WW	YW	Milk	ME	HPG	CEM	Stay	Marb	YG	CW	REA	Fat
151	51	11	-0.5	78	129	26	2	16	6	12	0.31	0.06	38	0.21	0



LACY LAKOTA 8105
 MATERNAL GRANDDAM OF LOTS 42 AND 43



LOT 44 - LACY MCL DESPERADO 003G

Lacy MCL Desperado 003G is a dark cherry red, strong constructed herd sire prospect that offers exceptional shape, dimension, and balance. Desperado is sired by Lacy 1776 002D, the standout 5L Independence 560-298Y son that is from the Annie cow family. On his maternal side, 003G is backed by a productive CCF Gold Bar 0251 daughter with an MPPA of 106. Numerically he ranks top 4% HB, top 9% GM, top 21% WW, top 23% YW, top 29% ADG, top 7% Milk, top 3% Stay, top 6% Marb, top 28% YG, top 11% CW, top 18% REA, and top 20% Fat. A true sale highlight that is a product of the Lacy breeding program! *Retaining 1/2 Semen Interest*

44

LACY MCL DESPERADO 003G

DOB: 3/11/19 Reg: 4086790 Tattoo: 003G A - 100% AR

5L INDEPENDENCE 560-298Y
LACY 1776 002D
 LACY ANNIE 405

BUF CRK THE RIGHT KIND U199
 5L BLACK ADINA 525-560
 LACY FHG LEGACY 6097
 LACY MATTIE 115

BW	IMF
79	3.85
AWW	REA
748	13.38

CCF GOLD BAR 0251
LACY LAKOTA 0251 329
 RHRA Z-LINE LC 043 536R

LCHMN GOLD ROBBER 1909E
 GMRA PRINCESS 720
 LSF LIGHT CANYON 3000N
 RHRA FLASH 616 043

AYW	BF
1241	0.27
DMPPA	
106	

HB	GM	CED	BW	WW	YW	Milk	ME	HPG	CEM	Stay	Marb	YG	CW	REA	Fat
211	51	11	0.8	67	106	30	3	10	6	21	0.67	0.06	33	0.19	0.01



LACY 1776 002D - SIRE OF LOTS 42-44



LOT 45 - LACY MCL DECLARATION 006G

Lacy MCL Declaration 006G is a top son of the Genex stud, HXC Declaration 5504. His dam is by Lacy Gold Bar 1120, one of the most influential sires ever used in the Lacy's Red Angus program. He is a dense bodied, thick ended, masculine individual that offers a rugged and athletic look. 006G ranks top 5% HB, top 6% GM, top 7% WW, top 3% YW, top 2% ADG, top 9% Stay, and top 3% CW. A performance driven standout that is destined to add pounds to your next calf crop and increase your bottom line!

45

LACY MCL DECLARATION 006G

DOB: 3/1/19 Reg: 4086796 Tattoo: 006G A - 100% AR

LEACHMAN PLEDGE A282Z
HXC DECLARATION 5504C
 HXC190Y

LACY GOLD BAR 1120
LACY LAKOTA 1120 411
 LACY ANNIE 101

LSF NEXTPECTATION 0083X
 LCOC ZARA TG004
 BECKTON NEBULA P P707
 HXC ELLIE MAY MA638
 CCF GOLD BAR 0251
 RHRA Z-LINE LC 043 536R
 LACY FHG LEGACY 6097
 LACY MS CALI 6161

BW	IMF
84	3.13
AWW	REA
706	13.12
AYW	BF
1233	0.27
DMPPA	RESPONSE
99	

HB	GM	CED	BW	WW	YW	Milk	ME	HPG	CEM	Stay	Marb	YG	CW	REA	Fat
202	51	11	0.7	74	124	19	10	10	8	19	0.49	0.14	40	0.06	0.01



HXC DECLARATION 5504C - SIRE OF LOT 45



LOT 46 - LACY SIGNATURE 012G

Lacy Signature 012G is sensible in his frame size, thick ended, big hipped Red Angus bull that is sired by LACY Signature 459 and combines the influence of CCF Gold Bar 0251 on the south side of his lineage. 012G ranks top 15% HB, top 15% HPG, top 22% Stay, top 20% YG, and top 12% Fat. 012G offers an IMF Ratio of 111, a trait leader among his contemporaries. 012G is a powerful individual that offers exceptional carcass merit to accompany his rugged body type.

46

LACY SIGNATURE 012G



DOB: 3/1/19 Reg: 4086806 Tattoo: 012G A - 100% AR

5L SIGNATURE 5615
LACY SIGNATURE 459
LACY LANA 024

5L NORSEMAN KING 2291
5L RUBY 199-01
BECKTON NEBULA P P707
LACY SIRENA 8063

BW IMF
84 2.82

AWW REA
665 14.42

CCF GOLD BAR 0251
LACY RUBY 7099
VDAR REBALAS 401

LCHMN GOLD ROBBER 1909E
GMRA PRINCESS 720
BJR RAMBLER 5162
GLACIER RB-LS

AYW BF
1230 0.28

DMPPA
100

HB	GM	CED	BW	WW	YW	Milk	ME	HPG	CEM	Stay	Marb	YG	CW	REA	Fat
188	48	13	-0.5	53	91	24	1	13	8	18	0.33	0.04	23	0.07	0



LACY SIGNATURE 459 - SIRE OF LOT 46







The
FEMALE OFFERING

THE SPRING OPEN FEMALES



LOT 50 - MCL LANA 001D 0006

MCL Lana 001D 0006 leads off the spring open division of the 2020 offering! Sired by Lacy 1776 002D and backed by the Night Calver daughter, 001D from the Lana tribe. 0006 is a stunning March born prospect that is bullet proof for balance from the profile, flawless in her stride when asked to move, and offers the added shape, dimension, and volume needed to make a true impact when she enters production. 0006 is a top show heifer prospect that we whole heartedly believe will endure a highly successful career on the tan bark yet offers the credentials to be a powerful breeding piece when her tenure on the show road comes to an end. Numerically she ranks top 4% GM, top 9% YW, top 3% ADG, top 15% Milk, top 19% Marb, top 17% CW, and top 18% REA. Junior exhibitors take note here, this is the type and kind of female to build a program around!

50	<p style="margin: 0;">MCL LANA 001D 0006 </p> <p style="margin: 0;">DOB: 3/10/20 Reg: 4269501 Tattoo: 6 A - 100% AR</p>
<p>5L INDEPENDENCE 560-298Y LACY 1776 002D LACY ANNIE 405</p> <p>LSF NIGHT CALVER 9921W LACY LANA 404 001D LACY LANA 404</p>	<p>BUF CRK THE RIGHT KIND U199 BW 5L BLACK ADINA 525-560 76</p> <p>LACY FHG LEGACY 6097 AWW LACY MATTIE 115 781</p> <p>MESSMER PACKER S008 DMPPA LSF DELLA P4078 U8051 98 LSF JBOB EXPECTATION 6034S LACY MATTIE 110</p>



LACY 1776 002D - SIRE OF LOT 50

HB	GM	CED	BW	WW	YW	Milk	ME	HPG	CEM	Stay	Marb	YG	CW	REA	Fat
171	52	11	-1	68	118	28	4	12	7	15	0.54	0.07	30	0.2	0.02

THE SPRING OPEN FEMALES



LOT 51 - MCL PENNY 343 0013

MCL Penny 343 0013 is a top April prospect that is sure to turn heads on sale day! Sired by Lacy Iron Mike 005E, this powerfully constructed female offers a look of class, style, and elegance from the profile. Her dam, 343 is from the Lakota cow family and combines the influence of CCF Gold Bar 0251 on the south side of her lineage. Numerically she ranks top 29% GM, top 21% CED, top 13% Milk, top 2% CEM, top 28% Stay, and top 27% REA. A competitive option for any junior exhibitor looking for a top show heifer prospect to campaign.

51

MCL PENNY 343 0013



DOB: 4/6/20 Reg: 4269503 Tattoo: 13 A - 100% AR

LSF SRR TYSON 3025A
LACY IRON MIKE 005E
 LACY LAKOTA 8014 020C

MUSHRUSH IMPRESSIVE CA U236
 LSF JIBA R5009 W9247
 LACY FHG LEGACY 6097
 LACY LAKOTA 8014

BW
78

AWW
806

LACY ICON 125
LACY LAKOTA 125 343
 LACY LAKOTA 010

NSF ICON P532
 LACY VANESA 7059
 CCF GOLD BAR 0251
 LACY MISS LOGAN 12H

DMPPA
101

HB	GM	CED	BW	WW	YW	Milk	ME	HPG	CEM	Stay	Marb	YG	CW	REA	Fat
175	45	15	-1.9	63	95	29	3	9	11	17	0.3	0.1	20	0.14	0.04



LACY IRON MIKE 005E - SIRE OF LOT 51



LOT 52A - LACY MS ANNIE 6132 019G

Offering choice and privilege to select one of two ET females from the Lacy MS Annie 6132 matriarch. This pair of sisters are sired by the Lacy's Red Angus and MC Livestock herd sire, Lacy Legacy 6097 417 stud. Look, design, and natural presence is what sets this pair of sisters into a league of their own. The mass, dimension, and sheer power that these females offer is hard to portray in a two-dimensional photo, but in the flesh their natural sweep and outward rib shape is what labels them as true brood cow prospects. Their powerful dam, Lacy MS Annie 6132 is a daughter of Lacy Line Backer 123H, one of the stoutest and most rugged herd bulls ever used in the program. Udder quality, functionality, foot shape, and fescue adaptability is bred into the lineage that supports this stunning pair of sisters. 6132 offers an impressive MPPA of 111, while setting the standard for forage efficiency and longevity. We will be retaining one of these females in herd as a replacement breeding piece for their powerful dam. Due to the slight differences we decided the only logical way to make this decision was to offer them both for sale at public auction. The opportunity is yours on October 24, 2020, which one is your pick?



LACY MS ANNIE 6132 - DAM OF LOTS 52A - 54



LOT 52B - LACY MS ANNIE 6132 020G

The Legacy x Annie Flushmates

52A

LACY MS ANNIE 6132 019G

DOB: 3/1/19 Reg: 4086818 Tattoo: 019G A - 100% AR

LACY FHG LEGACY 6097
LACY LEGACY 6097 417
LACY LAKOTA 122

BIEBER MAKE MIMI 7249
LACY MS CHEROKEE 102M
CCF GOLD BAR 0251
RHRA MARTHA LC 140 509R

BW
78
AWW
676

LACY LINE BACKER 123H
LACY MS ANNIE 6132
VDAR REBALAS 401

BUF CRK BARNEY 3474
LACY ANNA HW 16E
BJR RAMBLER 5162
GLACIER RB-LS

AYW
-
DMPPA
111

HB	GM	CED	BW	WW	YW	Milk	ME	HPG	CEM	Stay	Marb	YG	CW	REA	Fat
186	44	13	-1.9	56	72	28	-1	7	8	21	0.43	-0.01	24	0.25	0

AI to RHRA FROSTY 5G (4156644) on 5/23/20 & PE to Andras Intrigue F164 (#4109770) on 6/5/20 - 7/20/20

52B

LACY MS ANNIE 6132 020G

DOB: 3/7/19 Reg: 4086820 Tattoo: 020G A - 100% AR

LACY FHG LEGACY 6097
LACY LEGACY 6097 417
LACY LAKOTA 122

BIEBER MAKE MIMI 7249
LACY MS CHEROKEE 102M
CCF GOLD BAR 0251
RHRA MARTHA LC 140 509R

BW
72
AWW
621

LACY LINE BACKER 123H
LACY MS ANNIE 6132
VDAR REBALAS 401

BUF CRK BARNEY 3474
LACY ANNA HW 16E
BJR RAMBLER 5162
GLACIER RB-LS

AYW
-
DMPPA
111

HB	GM	CED	BW	WW	YW	Milk	ME	HPG	CEM	Stay	Marb	YG	CW	REA	Fat
160	48	12	0.6	64	95	28	0	6	8	16	0.45	0.02	23	0.16	0

AI to RHRA FROSTY 5G (4156644) on 5/23/20 & PE to Andras Intrigue F164 (#4109770) on 6/5/20 - 7/20/20

53

LACY MS ANNIE 6132 007G

DOB: 3/3/19 Reg: 4086798 Tattoo: 007G A - 100% AR

LACY FHG LEGACY 6097
LACY LEGACY 6097 417
LACY LAKOTA 122

BIEBER MAKE MIMI 7249
LACY MS CHEROKEE 102M
CCF GOLD BAR 0251
RHRA MARTHA LC 140 509R

BW
66
AWW
589
AYW
-
DMPPA
111

LACY LINE BACKER 123H
LACY MS ANNIE 6132
VDAR REBALAS 401

BUF CRK BARNEY 3474
LACY ANNA HW 16E
BJR RAMBLER 5162
GLACIER RB-LS

HB	GM	CED	BW	WW	YW	Milk	ME	HPG	CEM	Stay	Marb	YG	CW	REA	Fat
168	42	15	-3.7	48	62	28	0	8	9	18	0.42	0.02	2	-0.07	0.01

Lacy MS Annie 6132 007G is another sister from a powerful flush of females that are supported by the great 6132 matriarch. 007G is a stout made, feminine featured, bold bodied female that is sound in her basic build and exemplifies the fundamentals. 007G ranks top 14% CED, top 14% BW, top 20% Milk, top 10% CEM, top 18% Stay, and top 13% YG. *AI to RHRA FROSTY 5G (4156644) on 5/23/20 & PE to Andras Intrigue F164 (#4109770) on 6/5/20 - 7/20/20*



LOT 56 - LACY BLOCKANA 088D 016G

54

LACY MS ANNIE 6132 011G

DOB: 3/1/19 Reg: 4086804 Tattoo: 011G A - 100% AR

LACY FHG LEGACY 6097
LACY LEGACY 6097 417
LACY LAKOTA 122

BIEBER MAKE MIMI 7249
LACY MS CHEROKEE 102M
CCF GOLD BAR 0251
RHRA MARTHA LC 140 509R

BW
70
AWW
536
AYW
-
DMPPA
111

LACY LINE BACKER 123H
LACY MS ANNIE 6132
VDAR REBALAS 401

BUF CRK BARNEY 3474
LACY ANNA HW 16E
BJR RAMBLER 5162
GLACIER RB-LS

HB	GM	CED	BW	WW	YW	Milk	ME	HPG	CEM	Stay	Marb	YG	CW	REA	Fat
176	46	15	-1.7	57	78	28	0	8	9	18	0.59	0.04	20	0.12	0.01

Lacy MS Annie 6132 011G is the fourth sister of a powerful flush sired by Lacy Legacy 6097 417. She offers the udder quality, and same skeletal design as her powerful donor dam. She ranks top 16% CED, top 20% Milk, top 9% CEM, top 13% Marb, and top 22% YG. *AI to C-Bar Right Kind A345 (1723310) on 5/23/20 & PE to Andras Intrigue F164 (#4109770) on 6/5/20 - 7/20/20*

56

LACY BLOCKANA 088D 016G

DOB: 3/4/19 Reg: 4086814 Tattoo: 016G A - 100% AR

5L INDEPENDENCE 560-298Y
LACY 1776 002D
LACY ANNIE 405

BUF CRK THE RIGHT KIND U199
5L BLACK ADINA 525-560
LACY FHG LEGACY 6097
LACY MATTIE 115

BW
72
AWW
618
AYW
-
DMPPA

FRITZ JUSTICE 8013
LACY BLOCKANA 223 088D
LACY BLOCKANA 7149 223

VGW JUSTICE 614
FRITZ CHRIS 6047
FEDDES NORSE FIRE 7149
RHRA Z-LINE LC 043 536R

HB	GM	CED	BW	WW	YW	Milk	ME	HPG	CEM	Stay	Marb	YG	CW	REA	Fat
159	50	12	-1.3	69	111	30	3	7	7	15	0.58	0.1	34	0.14	0.02

Lacy Blockana 088D 016G is a cherry red powerful daughter of Lacy 1776 002D, one of our featured herd sires at Lacy's Red Angus. 016G is backed by a powerful young daughter of Fritz Justice 8013 from the Blockana tribe. She offers a balanced number profile, charting top 18% GM, top 18% WW, top 15% YW, top 15% ADG, top 8% Milk, top 14% Marb, and top 9% CW. *AI to LACY Iron Mike 005E (3717855) on 5/23/20 & PE to Andras Intrigue F164 (#4109770) on 6/5/20 - 7/20/20*

55

LACY SIRENA 049C 033G

DOB: 3/23/19 Reg: 4086846 Tattoo: 033G B - 96.9% AR

5L INDEPENDENCE 560-298Y
LACY 1776 002D
LACY ANNIE 405

BUF CRK THE RIGHT KIND U199
5L BLACK ADINA 525-560
LACY FHG LEGACY 6097
LACY MATTIE 115

BW
81
AWW
686
AYW
-
DMPPA
105

LJC MISSION STATEMENT P27
LACY SIRENA 8058 049C
LACY SIRENA 8058

LJC LANCER 806
LJC HANNAH 106
BIEBER MAKE MIMI 7249
LACY SUNFLOWER 6079

HB	GM	CED	BW	WW	YW	Milk	ME	HPG	CEM	Stay	Marb	YG	CW	REA	Fat
141	52	7	2.4	78	126	26	4	8	3	14	0.53	0.01	43	0.39	0

Lacy Sirena 049C 033G is a sharp featured, ultra-attractive female that is near picture perfect from the side. She is sired by Lacy 1776 002D and backed a powerful Mission Statement daughter from Lacy Sirena 8058. She ranks top 5% GM, top 3% WW top 3% YW, top 4% ADG, top 21% Marb, top 12% YG, top 1% CW, top 4% REA, and top 9% Fat. Extreme look, quality, and true carcass merit! *AI to LACY Collusion 115F (4083822) on 5/23/20 & PE to Andras Intrigue F164 (#4109770) on 6/5/20 - 7/20/20*



LOT 55 - LACY SIRENA 049C 033G

THE SPRING BRED FEMALES



LACY LAKOTA 8014
DAM OF LOT 58

57

LACY MATTIE 115 042G

DOB: 3/23/19 Reg: 4086858 Tattoo: 042G A - 100% AR

5L INDEPENDENCE 560-298Y
LACY 1776 002D
LACY ANNIE 405

BUF CRK THE RIGHT KIND U199
5L BLACK ADINA 525-560
LACY FHG LEGACY 6097
LACY MATTIE 115

BW
78
AWW
628

NSF ICON P532
LACY MATTIE 115
LACY REBALAS 35L

LSF COMBINATION A301M
MS NSF MIMI M628
SHOCO RAMBLE 72
BJR TERA 117-770

AYW
-
DMPPA
104

HB	GM	CED	BW	WW	YW	Milk	ME	HPG	CEM	Stay	Marb	YG	CW	REA	Fat
142	50	8	0.6	68	113	28	5	8	4	14	0.5	0.09	38	0.2	0.01

A broody daughter of the great Lacy 1776 002D that is from the Lacy Mattie 115 dam, a female that boasts a MPPA of 104. 042G offers exceptional growth and carcass figures. She ranks top 19% GM, top 22% WW, top 13% YW, top 8% ADG, top 18% Milk, top 4% CW, and top 16% REA. *AI to RHRA FROSTY 5G (4156644) on 5/23/20 & PE to Andras Intrigue F164 (#4109770) on 6/5/20 - 7/20/20*

59

LACY LAKOTA 7099 009G

DOB: 3/1/19 Reg: 4086802 Tattoo: 009G A - 100% AR

5L SIGNATURE 5615
LACY SIGNATURE 459
LACY LANA 024

5L NORSEMAN KING 2291
5L RUBY 199-01
BECKTON NEBULA P P707
LACY SIRENA 8063

BW
70
AWW
582

CCF GOLD BAR 0251
LACY RUBY 7099
VDAR REBALAS 401

LCHMN GOLD ROBBER 1909E
GMRA PRINCESS 720
BJR RAMBLER 5162
GLACIER RB-LS

AYW
-
DMPPA
100

HB	GM	CED	BW	WW	YW	Milk	ME	HPG	CEM	Stay	Marb	YG	CW	REA	Fat
189	48	13	-0.5	53	91	24	1	13	8	18	0.35	0.04	25	0.09	0

009G is a daughter of Lacy Signature 459, a multi-trait carcass leading sire that we have used extensively within our program. The dam of 009G is sired by the tried and true, CCF Gold Bar 0251. She ranks top 15% HB, top 28% ADG, top 15% HPG, top 22% Stay, top 19% YG, and top 12% Fat. Balanced and proven genetics! *AI to RHRA FROSTY 5G (4156644) on 5/24/20 & PE to Andras Intrigue F164 (#4109770) on 6/5/20 - 7/20/20*

58

LACY LAKOTA 8014 008G

DOB: 3/2/19 Reg: 4086800 Tattoo: 008G A - 100% AR

LEACHMAN PLEDGE A282Z
HXC DECLARATION 5504C
HXC190Y

LSF NEXTPECTATION 0083X
LCOC ZARA TG004
BECKTON NEBULA P P707
HXC ELLIE MAY MA638

BW
72
AWW
645

CCF GOLD BAR 0251
LACY LAKOTA 8014
LACY REBALAS 35L

LCHMN GOLD ROBBER 1909E
GMRA PRINCESS 720
SHOCO RAMBLE 72
BJR TERA 117-770

AYW
-
DMPPA
101

HB	GM	CED	BW	WW	YW	Milk	ME	HPG	CEM	Stay	Marb	YG	CW	REA	Fat
186	50	12	-1.3	64	108	22	9	12	8	17	0.51	0.05	28	0.15	0.01

008G is a big bodied, high volume daughter of HXC Declaration 5504C that is from the Lakota tribe. She offers the influence of CCF Gold Bar 0251 on her maternal side. She ranks top 21% HB, top 15% GM, top 32% WW, top 19% YW, top 10% ADG, top 16% CEM, top 24% Marb, top 22% YG, top 21% CW, and top 26% REA. *AI to RHRA FROSTY 5G (4156644) on 5/24/20 & PE to Andras Intrigue F164 (#4109770) on 6/5/20 - 7/20/20*

60

LACY EMPRESS 8013 014G

DOB: 3/2/19 Reg: 4086836 Tattoo: 014G A - 100% AR

LSF SAGA 1040Y
PIE CINCH 4126
TKP BONNE BEL 110

BECKTON EPIC R397 K
LSF MINOLA T7172 W9041
HXC CONQUEST 4405P
TKP BONNE BEL 9031

BW
66
AWW
634

CCF GOLD BAR 0251
LACY LAKOTA 8013
SELL EMPRESS 108

LCHMN GOLD ROBBER 1909E
GMRA PRINCESS 720
BECKTON MOUNTAINTOP 870
SELL EMPRESS 521

AYW
-
DMPPA
98

HB	GM	CED	BW	WW	YW	Milk	ME	HPG	CEM	Stay	Marb	YG	CW	REA	Fat
187	46	14	-2.5	57	91	27	-1	13	8	18	0.18	0.12	17	-0.03	0.03

Lacy Empress 8013 014G is sired by the performance-oriented PIE Cinch 4126, an own son of the great LSF Saga 1040Y. On her maternal side she is supported by the influence of the maternal great, CCF Gold Bar 0251. Numerically she ranks top 16% HB, top 22% CED, top 32% BW, top 28% DMI, top 17% HPG, and top 22% Stay. *AI to RHRA FROSTY 5G (4156644) on 5/23/20 & PE to Andras Intrigue F164 (#4109770) on 6/5/20 - 7/20/20*



LOT 61 - LACY LILLIE 020C 070G

Lacy Lillie 020 070G leads off the fall yearling division of the 2020 production sale. A full sister to the great Lacy's Red Angus and MC Livestock herd sire, Lacy Iron Mike 005E. 070G is a dark red, massive designed brood cow prospect that is sure to turn heads on sale day due to her added balanced and eye-appeal. She exemplifies the fundamentals that we have emphasized for generations within the Red Angus breed. Fleshing ability, foot quality, structural integrity, and internal body dimension. She boasts an impressive number profile to accompany her phenotype, ranking top 14% HB, top 11% GM, top 2% WW, top 3% YW, top 8% ADG, top 22% HPG, top 9% CEM, top 12% YG, top 6% CW, and top 4% REA. A true breeding piece among the entire offering and a female that we truly believe will make a lasting impact on the Red Angus breed – bid with confidence!

61

LACY LILLIE 020C 070G



DOB: 9/2/19 Reg: 4237538 Tattoo: 070G A - 100% AR

MUSHRUSH IMPRESSIVE CA U236
LSF SRR TYSON 3025A
 LSF JIBA R5009 W9247

BUF CRK LANCER R017
 MUSHRUSH MADAM LT R265
 MESSMER PACKER S008
 LSF JIBA K1004 R5009

BW
55
 AWW
593

LACY FHG LEGACY 6097
LACY LAKOTA 8014 020C
 LACY LAKOTA 8014

BIEBER MAKE MIMI 7249
 LACY MS CHEROKEE 102M
 CCF GOLD BAR 0251
 LACY REBALAS 35L

AYW
998
 DMPPA
98

HB	GM	CED	BW	WW	YW	Milk	ME	HPG	CEM	Stay	Marb	YG	CW	REA	Fat
188	50	11	-0.3	79	123	27	1	12	9	17	0.36	0.01	36	0.39	0.01



LACY LAKOTA 8014 020C - DAM OF LOT 61

THE FALL YEARLING OPEN FEMALES



LACY IRON MIKE 005E - FULL BROTHER TO LOT 61 AND SIRE OF COUNTLESS BULLS AND FEMALES IN THE SALE

64

LACY LAKOTA 7097 058G

DOB: 8/28/19 Reg: 4237516 Tattoo: 058G A - 100% AR

LSF SRR TYSON 3025A
LACY IRON MIKE 005E
LACY LAKOTA 8014 020C

MUSHRUSH IMPRESSIVE CA U236	BW
LSF JIBA R5009 W9247	70
LACY FHG LEGACY 6097	AWW
LACY LAKOTA 8014	562

5L SIGNATURE 5615
LACY RUBY 7097
LACY MS CHEROKEE 70M

5L NORSEMAN KING 2291	AYW
5L RUBY 199-01	985
BFCK CHEROKEE CNYN 4912	DMPPA
LACY MS TILLY 194K	107

HB	GM	CED	BW	WW	YW	Milk	ME	HPG	CEM	Stay	Marb	YG	CW	REA	Fat
164	47	12	-2	69	102	32	2	11	7	16	0.44	0.09	29	0.27	0.04

Lacy Iron Mike 005E has continued to impress us and without a doubt has exceeded our expectations with his rookie calf crop. Lacy Lakota 7097 058G is backed by the Signature daughter from the Cherokee cow family. She ranks top 17%, top 3% Milk, top 20% CW, and top 10% REA.

62

LACY MARIE 095D 082G

DOB: 9/1/19 Reg: 4237558 Tattoo: 082G A - 100% AR

LSF SRR TYSON 3025A
LACY IRON MIKE 005E
LACY LAKOTA 8014 020C

MUSHRUSH IMPRESSIVE CA U236	BW
LSF JIBA R5009 W9247	66
LACY FHG LEGACY 6097	AWW
LACY LAKOTA 8014	580

BUF CRK THE RIGHT KIND U199
LACY MARIE 237 095D
LACY MARIE 237

BUF CRK LANCER R017	AYW
BUF CRK SHOSHONE R353	918
BADLANDS NET WORTH 23U	DMPPA
LACY MARIE 8190	97

HB	GM	CED	BW	WW	YW	Milk	ME	HPG	CEM	Stay	Marb	YG	CW	REA	Fat
183	48	11	-1.5	69	103	26	-1	12	8	17	0.41	0.08	26	0.15	0.02

Lacy Marie 095D 082G initiates the Lacy Iron Mike 005E sire group within the fall open heifer division. She is undoubtedly the right kind from a fundamental standpoint. Good footed, sound structured, and offers an outward turn to her rib cage. A productive, low input type female that offers the look of a true brood cow prospect. She ranks top 19% HB, top 16% WW, top 30% YW, top 28% HPG, top 22% CEM, top 25% Stay, and top 26% REA.



LACY LAKOTA 7097 482 - MATERNAL GRANDAM OF LOT 65

63

LACY JEWEL 129E 083G

DOB: 9/3/19 Reg: 4237560 Tattoo: 083G A - 100% AR

LSF SRR TYSON 3025A
LACY IRON MIKE 005E
LACY LAKOTA 8014 020C

MUSHRUSH IMPRESSIVE CA U236	BW
LSF JIBA R5009 W9247	68
LACY FHG LEGACY 6097	AWW
LACY LAKOTA 8014	594

LACY SAGA 112C
LACY JEWEL 473 129E
LACY LAKOTA 0116 473

LSF SAGA 1040Y	AYW
LACY LARKISA 5049	920
LACY GOLD BAR 1120	DMPPA
LACY REBA 0116	100

HB	GM	CED	BW	WW	YW	Milk	ME	HPG	CEM	Stay	Marb	YG	CW	REA	Fat
189	48	12	-1.3	70	110	27	1	13	8	18	0.38	0.13	33	0.21	0.04

Lacy Jewel 129E 083G is another standout daughter from the Iron Mike sire group. She is dense made, wide pinned, and offers a brood cow look. Her dam is a granddaughter of the performance driven LSF Saga 1040Y. Numerically she ranks top 12% HB, top 13% WW, top 16% YW, top 13% HPG, top 20% Stay, top 11% CW, and top 15% REA.

65

MCL RUBY 056E 9510

DOB: 9/1/19 Reg: 4238136 Tattoo: 9510 A - 100% AR

LSF SRR TYSON 3025A
LACY IRON MIKE 005E
LACY LAKOTA 8014 020C

MUSHRUSH IMPRESSIVE CA U236	BW
LSF JIBA R5009 W9247	65
LACY FHG LEGACY 6097	AWW
LACY LAKOTA 8014	584

PIE ONE OF A KIND 352
LACY RUBY 482 056E
LACY LAKOTA 7097 482

BUF CRK THE RIGHT KIND U199	AYW
PIE FAYETTE 1160	930
CCF GOLD BAR 0251	DMPPA
LACY RUBY 7097	104

HB	GM	CED	BW	WW	YW	Milk	ME	HPG	CEM	Stay	Marb	YG	CW	REA	Fat
158	48	10	-1.3	80	122	29	6	12	8	15	0.31	0.05	40	0.45	0.03

MCL Ruby 056E 9510 is unique daughter of Iron Mike that is backed by the influential Pie One Of A Kind 352 on her maternal side. Her maternal granddam is the impressive Lacy Lakota 7097 482 matron. Numerically she ranks top 2% WW, top 4% YW, top 16% ADG, top 12% Milk, top 21% YG, top 3% CW, and top 2% REA.



LOT 66 - LACY MARIE 8190 074G

66

LACY MARIE 8190 074G



DOB: 9/12/19 Reg: 4237546 Tattoo: 074G A - 100% AR

LACY FHG LEGACY 6097
LACY LEGACY 6097 417
 LACY LAKOTA 122

BIEBER MAKE MIMI 7249
 LACY MS CHEROKEE 102M
 CCF GOLD BAR 0251
 RHRA MARTHA LC 140 509R

BW
76
 AWW
624

LACY CHEROKEE 128M
LACY MARIE 8190
 VDAR REBALAS 401

BFCK CHEROKEE CNYN 4912
 BUF CRK PNMARIE 1781
 BJR RAMBLER 5162
 GLACIER RB-LS

AYW
978
 DMPPA
103

HB	GM	CED	BW	WW	YW	Milk	ME	HPG	CEM	Stay	Marb	YG	CW	REA	Fat
165	48	8	1.6	66	98	30	-1	6	5	18	0.43	0.01	30	0.25	0

Lacy Marie 8190 074G is a direct daughter of the cornerstone female, Lacy Marie 8190. 074G is a sharp feature, attractive female that is smooth in her a general design. She is sensible in her frame size, bold in her rib cage, and balances with a look of quality. She ranks top 22% WW, top 38% YW, top 7% Milk, top 16% Stay, top 13% YG, top 18% Stay, and top 11% REA. A top brood cow prospect that is backed by a cow family with a proven track record!



LACY MARIE 8190 - DAM OF LOT 66



LACY LEGACY 6097 417 - SIRE OF LOT 66

THE FALL YEARLING OPEN FEMALES



LOT 67 - MCL MARIE 074C 9506

67

MCL MARIE 074C 9506



DOB: 9/1/19 Reg: 4238132 Tattoo: 9506 A - 100% AR

LACY FHG LEGACY 6097
LACY LEGACY 6097 417
LACY LAKOTA 122

BIEBER MAKE MIMI 7249 BW
LACY MS CHEROKEE 102M 72
CCF GOLD BAR 0251 AWW
RHRA MARTHA LC 140 509R 563

5L INDEPENDENCE 560-298Y
LACY MARIE 237 074C
LACY MARIE 237

BUF CRK THE RIGHT KIND U199 AYW
5L BLACK ADINA 525-560 916
BADLANDS NET WORTH 23U DMPPA
LACY MARIE 8190 104

HB	GM	CED	BW	WW	YW	Milk	ME	HPG	CEM	Stay	Marb	YG	CW	REA	Fat
148	50	13	0.6	70	107	28	0	9	8	12	0.65	0.04	36	0.19	0

MCL Marie 074C 9506 is a moderate framed, deep bodied, powerful daughter of Lacy Legacy 6097 417. Her dam is the impressive Lacy Mary 237 074C from the Independence sire group. Her third-generation dam is the foundation Lacy Marie 8190, a staple in the Lacy's Red Angus program. 9506 charts top 13% GM, top 13% WW, top 21% YW, top 21% Milk, top 22% CEM, top 8% Marb, top 18% YG, top 6% CW, top 18% REA, and top 7% Fat. A productive made female with exceptional carcass merit.



LOT 68 - LACY MARIE 6155 084G

68

LACY MARIE 6155 084G



DOB: 9/8/19 Reg: 4237562 Tattoo: 084G A - 100% AR

LACY FHG LEGACY 6097
LACY LEGACY 6097 417
LACY LAKOTA 122

BIEBER MAKE MIMI 7249 BW
LACY MS CHEROKEE 102M 74
CCF GOLD BAR 0251 AWW
RHRA MARTHA LC 140 509R 605

LACY CHEROKEE 128M
LACY MARIE 6155
LACY MS REBALAS 161M

BFCK CHEROKEE CNYN 4912 AYW
BUF CRK PNMARIE 1781 1005
SHOCO RAMBLE 72 DMPPA
LACY MIS INDIGO 128H 98

HB	GM	CED	BW	WW	YW	Milk	ME	HPG	CEM	Stay	Marb	YG	CW	REA	Fat
179	49	12	-0.3	64	93	25	-1	7	6	18	0.51	-0.01	27	0.33	0.01

084G is a high performing female that is backed by the Marie cow family. She is sired by Lacy Legacy 6097 417 herd sire that we own in partnership with MC Livestock. She is the number one female in her contemporary group from a performance standpoint, boasting a WW Ratio of 109. She ranks top 23% HB, top 34% WW, top 36% DMI, top 17% Stay, top 24% Marb, top 8% YG, top 28% CW, top 6% REA, and top 18% Fat. A performance and carcass merit standout!



LOT 69 - LACY MATTIE 033D 080G

69

LACY MATTIE 033D 080G



DOB: 9/2/19 Reg: 4237554 Tattoo: 080G B - 96.9% AR

LACY FHG LEGACY 6097
LACY LEGACY 6097 417
LACY LAKOTA 122

BIEBER MAKE MIMI 7249 BW
LACY MS CHEROKEE 102M 70
CCF GOLD BAR 0251 AWW
RHRA MARTHA LC 140 509R 610

LSF SAGA 1040Y
LACY MATTIE 1122 033D
LACY MATTIE 1122

BECKTON EPIC R397 K AYW
LSF MINOLA T7172 W9041 952
NSF ICON P532 DMPPA
LACY MS CHEROKEE 531P 100

HB	GM	CED	BW	WW	YW	Milk	ME	HPG	CEM	Stay	Marb	YG	CW	REA	Fat
175	48	12	-0.4	69	105	26	2	10	8	17	0.45	0.06	33	0.3	0.02

Lacy Mattie 033D 080G is one of the standout fall yearling females among the offering in terms of power, shape, and genuine substance. She is sired by Lacy Legacy 6097 417 and backed by the famed Mattie tribe at Lacy's Red Angus. She charts top 16% WW, top 25% YW, top 27% YG, top 12% CW, and top 8% REA. She boasts a WW Ratio of 105, a true powerhouse female that is bold in her basic build and offers the fundamentals of a cornerstone female. Study the quality and return on investment potential here!

THE FALL YEARLING OPEN FEMALES



LOT 70 - MCL ROBIN 475 9521



LACY FOUNDATION 448 - SIRE OF LOT 70



LACY GOLD BAR 1120
MATERNAL GRANDSIRE OF COUNTLESS LOTS SELLING



LOT 71 - MCL ANNIE 021C 9545

70

MCL ROBIN 475 9521



DOB: 9/3/19 Reg: 4238144 Tattoo: 9521 A - 100% AR

LACY CHATEAU 6089
LACY FOUNDATION 448
LACY MS ANNIE 6132

GLACIER CHATEAU 744
LACY MS CHEROKEE 160M
LACY LINE BACKER 123H
VDAR REBALAS 401

BW
84

AWW
578

LACY GOLD BAR 1120
LACY ROBIN 5023 475
LACY ROBIN 5023

CCF GOLD BAR 0251
RHRA Z-LINE LC 043 536R
LCC MAJOR LEAGUE A502M
VDAR REBALAS 401

AYW
924

DMPPA
105

HB	GM	CED	BW	WW	YW	Milk	ME	HPG	CEM	Stay	Marb	YG	CW	REA	Fat
166	47	5	1.8	57	92	32	5	9	3	19	0.4	0.07	11	0.09	0.04

MCL Robin 475 9521 is a feminine, ultra-attractive daughter of Lacy Foundation 448 that is backed by a productive daughter of Lacy Gold Bar 1120. She is a standout phenotypically that offers tremendous balanced, look, and style from every angle. Top 3% Milk, top 10% Stay, top 33% YG, and top 35% REA.

71

MCL ANNIE 021C 9545



DOB: 9/22/19 Reg: 4238162 Tattoo: 9545 A - 100% AR

LACY CHATEAU 6089
LACY FOUNDATION 448
LACY MS ANNIE 6132

GLACIER CHATEAU 744
LACY MS CHEROKEE 160M
LACY LINE BACKER 123H
VDAR REBALAS 401

BW
66

AWW
525

LACY GOLD BAR 1120
LACY ANNIE 020 021C
LACY ANNIE 020

CCF GOLD BAR 0251
RHRA Z-LINE LC 043 536R
LACY FHG SIGNATURE 7086
LACY MS ANNIE 7020

AYW
807

DMPPA
101

HB	GM	CED	BW	WW	YW	Milk	ME	HPG	CEM	Stay	Marb	YG	CW	REA	Fat
152	48	9	0.1	56	95	31	5	11	5	15	0.39	0.12	19	0.11	0.04

MCL Annie 021C 9545 is an ultra-attractive profiling daughter of Lacy Foundation 448 that is backed by the Annie tribe. She is an angular, flat shouldered, attractive profiling female that offers the influence of Lacy Gold Bar 1120. She offers a balanced number profile to accompany her maternal phenotype.

THE FALL YEARLING OPEN FEMALES



LOT 72
MCL LAKOTA 474 9501

72

MCL LAKOTA 474 9501



DOB: 8/28/19 Reg: 4238126 Tattoo: 9501 A - 100% AR

LACY CHATEAU 6089
LACY FOUNDATION 448
LACY MS ANNIE 6132

GLACIER CHATEAU 744
LACY MS CHEROKEE 160M
LACY LINE BACKER 123H
VDAR REBALAS 401

BW
55
AWW
523

LACY GOLD BAR 1120
LACY LAKOTA 0197 474
LACY ANNIE 0197

CCF GOLD BAR 0251
RHRA Z-LINE LC 043 536R
LACY FHG LEGACY 6097
LACY LARKISA 132M

AYW
801
DMPPA
99

HB	GM	CED	BW	WW	YW	Milk	ME	HPG	CEM	Stay	Marb	YG	CW	REA	Fat
185	48	16	0	62	96	28	3	8	9	17	0.39	0.09	23	0.12	0.03

MCL Lakota 474 9501 is an ultra-attractive Lacy Foundation 448 daughter from the influence of Lacy Gold Bar 1120 from the famed Lacy Annie 0197 matron. Her balance, symmetry, and class is second to none. She ranks top 19% HB, top 8% CED, top 20% Milk, top 6% CEM, and top 28% STAY. The foundation female type!

73

LACY VERDALE 0235 059G



DOB: 8/29/19 Reg: 4237518 Tattoo: 059G A - 100% AR

LACY CHATEAU 6089
LACY FOUNDATION 448
LACY MS ANNIE 6132

GLACIER CHATEAU 744
LACY MS CHEROKEE 160M
LACY LINE BACKER 123H
VDAR REBALAS 401

BW
76
AWW
487

LACY LEGACY 8078
LACY VERDALE 0235
LACY LAKOTA 8210

LACY FHG LEGACY 6097
LACY VERDALE 535P
CCF GOLD BAR 0251
LACY MIS KAY 5090

AYW
887
DMPPA
104

HB	GM	CED	BW	WW	YW	Milk	ME	HPG	CEM	Stay	Marb	YG	CW	REA	Fat
148	48	8	1.6	63	100	27	5	10	6	15	0.28	0.04	22	0.19	0.02

059G is from the Lacy Foundation 448 sire group that has left behind a sensational set of females in production. 059G is backed by the Legacy influence maternally, tracing to the impressive 6097. She charts top 22% Milk, top 20% YG, and top 19% REA.



74

LACY RUBY 8001 103G



DOB: 9/24/19 Reg: 4237598 Tattoo: 103G A - 100% AR

LACY CHATEAU 6089
LACY FOUNDATION 448
LACY MS ANNIE 6132

GLACIER CHATEAU 744
LACY MS CHEROKEE 160M
LACY LINE BACKER 123H
VDAR REBALAS 401

BW
82
AWW
591

5L SIGNATURE 5615
LACY RUBY 8001
LACY MS SUNFLOWER 487P

5L NORSEMAN KING 2291
5L RUBY 199-01
BUF CRK BARNEY 3474
VDAR REBALAS 401

AYW
900
DMPPA
100

HB	GM	CED	BW	WW	YW	Milk	ME	HPG	CEM	Stay	Marb	YG	CW	REA	Fat
142	47	9	2	65	102	28	2	12	5	14	0.27	0.09	19	0.1	0.03

103G is another highly productive, maternally focused daughter of Lacy Foundation 448. Her dam, Lacy Ruby 8001 is a daughter of the great 5L Signature 5615. She ranks top 28% WW, top 17% Milk, and top 24% HPG. A product of the program!

75

LACY MS ANNIE 6132 071G

DOB: 9/12/19 Reg: 4237540 Tattoo: 071G A - 100% AR

5L INDEPENDENCE 560-298Y
LACY 1776 002D
 LACY ANNIE 405

BUF CRK THE RIGHT KIND U199
 5L BLACK ADINA 525-560
 LACY FHG LEGACY 6097
 LACY MATTIE 115
 BUF CRK BARNEY 3474
 LACY ANNA HW 16E
 BJR RAMBLER 5162
 GLACIER RB-LS

BW
83
 AWW
658
 AYW
1048
 DMPPA
111

LACY LINE BACKER 123H
LACY MS ANNIE 6132
 VDAR REBALAS 401

HB	GM	CED	BW	WW	YW	Milk	ME	HPG	CEM	Stay	Marb	YG	CW	REA	Fat
143	47	9	-0.4	68	104	27	0	7	5	15	0.33	0.06	32	0.06	-0.01

Lacy MS Annie 6132 071G is a dark cherry red female that is sired by 1776, the leading 5L Independence 560-298Y son that is used in our program. Maternally she is backed by a stout Lacy Line Backer 123H daughter with an MPPA of 111. Numerically she ranks top 18% WW, top 26% YW, top 25% Milk, top 26% YG, top 12% CW, and top 6% Fat.



LOT 75 - LACY MS ANNIE 6132 071G

76

LACY ANNIE 080D 107G

DOB: 9/28/19 Reg: 4237606 Tattoo: 107G B - 96.9% AR

5L INDEPENDENCE 560-298Y
LACY 1776 002D
 LACY ANNIE 405

BUF CRK THE RIGHT KIND U199
 5L BLACK ADINA 525-560
 LACY FHG LEGACY 6097
 LACY MATTIE 115
 CCF GOLD BAR 0251
 LACY REBALAS 35L
 LACY FHG LEGACY 6097
 LACY MIS MIMI 7126

BW
70
 AWW
553
 AYW
875
 DMPPA
100

LACY GOLD BAR 0251 400
LACY ANNIE 174 080D
 LACY ANNIE 174

HB	GM	CED	BW	WW	YW	Milk	ME	HPG	CEM	Stay	Marb	YG	CW	REA	Fat
169	50	11	0.2	66	108	25	2	9	7	16	0.57	0.04	38	0.29	0.01

Lacy Annie 080D 107G is a performance and carcass merit standout among the offering. Her sire is the exciting Independence son, Lacy 1776 002D. She ranks top 11% GM, top 25% WW, top 19% YW, top 16% ADG, top 16% Marb, top 19% YG, top 4% CW, and top 8% REA. A unique individual from the Annie cow family that offers tremendous mating flexibility.



LACY MS ANNIE 6132 - DAM OF LOT 75

77

LACY RUBY 7099 064G

DOB: 9/1/19 Reg: 4237526 Tattoo: 064G A - 100% AR

5L SIGNATURE 5615
LACY SIGNATURE 459
 LACY LANA 024

5L NORSEMAN KING 2291
 5L RUBY 199-01
 BECKTON NEBULA P P707
 LACY SIRENA 8063
 LCHMN GOLD ROBBER 1909E
 GMRA PRINCESS 720
 BJR RAMBLER 5162
 GLACIER RB-LS

BW
68
 AWW
625
 AYW
977
 DMPPA
100

CCF GOLD BAR 0251
LACY RUBY 7099
 VDAR REBALAS 401

HB	GM	CED	BW	WW	YW	Milk	ME	HPG	CEM	Stay	Marb	YG	CW	REA	Fat
200	48	14	-0.7	56	94	24	1	13	8	19	0.37	0.13	33	0.12	0.03

Lacy Annie 080D 107G is a performance and carcass merit standout among the offering. Her sire is the exciting Independence son, Lacy 1776 002D. She ranks top 11% GM, top 25% WW, top 19% YW, top 16% ADG, top 16% Marb, top 19% YG, top 4% CW, and top 8% REA. A unique individual from the Annie cow family that offers tremendous mating flexibility.




LACY 1776 002D - SIRE OF LOT 75

THE FALL YEARLING OPEN FEMALES




LOT 78 - LACY LAKOTA 8102 067G

78 | **LACY LAKOTA 8102 067G** 

DOB: 9/1/19 Reg: 4237532 Tattoo: 067G A - 100% AR

LEACHMAN PLEDGE A282Z HXC DECLARATION 5504C HXC190Y	LSF NEXTPECTATION 0083X LCOC ZARA TG004 BECKTON NEBULA P P707 HXC ELLIE MAY MA638	BW 74 AWW 578
CCF GOLD BAR 0251 LACY LAKOTA 8102 LACY SIRENA 6055	LCHMN GOLD ROBBER 1909E GMRA PRINCESS 720 BIEBER MAKE MIMI 7249 LACY LARKISA 132M	AYW 973 DMPPA 102

79 | **MCL HAZEL 320 9505** 

DOB: 8/29/19 Reg: 4238130 Tattoo: 9505 A - 100% AR

LEACHMAN PLEDGE A282Z HXC DECLARATION 5504C HXC190Y	LSF NEXTPECTATION 0083X LCOC ZARA TG004 BECKTON NEBULA P P707 HXC ELLIE MAY MA638	BW 74 AWW 537
LSF JBOB EXPECTATION 6034S LACY HAZEL 6034S 320 LACY HAZEL 0133	LCHMN ENTERPRISE 1370H LSF SWEETNESS J1358 P4085 5L SUMMIT 1145-6327 LACY ROBIN 5023	AYW 890 DMPPA 101

HB	GM	CED	BW	WW	YW	Milk	ME	HPG	CEM	Stay	Marb	YG	CW	REA	Fat
174	50	11	0.1	65	111	20	8	10	8	17	0.47	0.03	30	0.21	0

067G is a striking daughter of HXC Declaration 5504C. She combines the influence of CCF Gold Bar 0251, a foundation sire in the program. 067G boasts a WW Ratio of 104 while ranking top 16% GM, top 15% YW, top 15% YG, top 17% CW, and top 15% REA. A true standout phenotypically that offers true balance and symmetry from every angle.

HB	GM	CED	BW	WW	YW	Milk	ME	HPG	CEM	Stay	Marb	YG	CW	REA	Fat
189	53	10	1.9	75	127	20	9	8	8	17	0.71	0.1	29	0	0.01

MCL Hazel 320 9505 is another powerful daughter of HXC Declaration 5504C, the performance standout in the Genex line-up. Declaration traces the famed HXC Jaylo LB136, a true standout in the C-Bar program donor pen that sets the standard for longevity and productivity. Numerically she is a standout, ranking top 1% GM, top 14% HB, top 6% WW, top 2% YW, top 1% ADG, top 4% Marb, and top 18% CW. A unique individual with tremendous potential for a quick return on investment!

The Daughters of Declaration

THE FALL YEARLING OPEN FEMALES



LOT 82
MCL ANNIE 156E 9511

80

LACY MATTIE 110 065G

DOB: 9/1/19 Reg: 4237528 Tattoo: 065G A - 100% AR

BECKTON NEBULA P P707
BECKTON NEW ERA Y194
BKT LARKEISA T310 JC

BECKTON NEBULA M045
BECKTON LANA M809 EP
BECKTON JUSTICE C1 R483
BKT LARKEISA R775 JC

BW
60
AWW
503

NSF ICON P532
LACY MATTIE 110
LACY LANA 7025

LSF COMBINATION A301M
MS NSF MIMI M628
TR JULIAN LT142
LACY MIS MIMI 5038

AYW
841
DMPPA
100

HB	GM	CED	BW	WW	YW	Milk	ME	HPG	CEM	Stay	Marb	YG	CW	REA	Fat
183	47	16	-4.9	55	93	25	6	5	8	19	0.51	0.2	11	-0.25	0.04

Lacy Mattie 110 065G is a standout daughter of the legendary Beckton New Era Y194, a trait leader for Herd Builder and one of the heavily utilized sires in the business. 065G is a direct daughter of Lacy Mattie 110. She ranks top 22% HB, top 12% CED, top 6% BW, top 29% ADG, top 13% Stay, and top 22% Marb.

82

MCL ANNIE 156E 9511

DOB: 9/2/19 Reg: 4238138 Tattoo: 9511 B - 96.9% AR

BUF CRK THE RIGHT KIND U199
C-BAR RIGHT KIND A345
BROWN MS BIG SKY U7877

BUF CRK LANCER R017
BUF CRK SHOSHONE R353
FEDDES BIG SKY R9
BROWN C- JOLENE S605

BW
66
AWW
511

LACY FOUNDATION 448
LACY ANNIE 135 156E
LACY ANNIE 135

LACY CHATEAU 6089
LACY MS ANNIE 6132
LACY FHG LEGACY 6097
LACY MARIE 6109

AYW
810
DMPPA
98

HB	GM	CED	BW	WW	YW	Milk	ME	HPG	CEM	Stay	Marb	YG	CW	REA	Fat
168	48	11	-0.9	62	93	23	1	11	6	16	0.45	0.04	22	0.18	0.02

9511 is sired by C-BAR Right Kind A345, an own son of Brown MS Big Sky U7877. On her maternal side she is from a hard-working two-year old dam that is sired by Lacy Foundation 448. Numerically she is balanced in her growth and maternal figures while ranking top 20% YG and top 21% REA.

81

LACY MATTIE 110 066G

DOB: 9/2/19 Reg: 4237530 Tattoo: 066G A - 100% AR

BECKTON NEBULA P P707
BECKTON NEW ERA Y194
BKT LARKEISA T310 JC

BECKTON NEBULA M045
BECKTON LANA M809 EP
BECKTON JUSTICE C1 R483
BKT LARKEISA R775 JC

BW
46
AWW
522

NSF ICON P532
LACY MATTIE 110
LACY LANA 7025

LSF COMBINATION A301M
MS NSF MIMI M628
TR JULIAN LT142
LACY MIS MIMI 5038

AYW
870
DMPPA
100

HB	GM	CED	BW	WW	YW	Milk	ME	HPG	CEM	Stay	Marb	YG	CW	REA	Fat
165	49	13	-4.4	56	101	25	6	5	7	16	0.48	0.18	27	-0.1	0.03

Lacy Mattie 110 066G is another daughter of Lacy Mattie 110 that is sired by Beckton New Era Y194. She is a bold centered, easy keeping female that ranks top 27% GM, top 10% BW, top 9% ADG, and top 26% CW.



THE FALL YEARLING OPEN FEMALES



RED NORTHLINE REVIVAL 122C - SIRE OF LOT 83



LACY FULL TANK 006D - SIRE OF LOT 85

83

MCL KASSIE 218 9513

DOB: 9/2/19 Reg: 4238140 Tattoo: 9513 A - 100% AR

RED NORTHLINE ROB ROY 122K
RED NORTHLINE REVIVAL 122C
RED BAR-E-L KASSIE 3P

RED WILD ROSE ROBINHOOD 11F
RED BAR EL SYBIL 122E
RED BAR-E-L APPROVAL 4L
RED BAR-E-L KASSIE 012G

BW
70
AWW
542

RED SSS OLY 554T
LACY HAZEL 218
LACY HAZEL 0180

RED CROWFOOT OLE'S OSCAR
RED SSS GOLD EDGE 77R
5L SUMMIT 1145-6327
RBJR ADVANCE CC B340

AYW
794
DMPPA
105

HB	GM	CED	BW	WW	YW	Milk	ME	HPG	CEM	Stay	Marb	YG	CW	REA	Fat
143	48	12	-0.2	58	99	30	-3	6	8	13	0.14	0.13	18	-0.08	0.02

Red Northline Revival 122C is the impressive Rob Roy son that is backed by the legendary Kassie cow family that calls home to Bar-E-L Angus in Alberta, Canada. On her maternal side she is supported by the influence of the great Red SSS Oly 554T. She is a stout made, bold centered, big hipped female that offers an outcross Canadian saturated pedigree. She ranks top 19% ADG, top 20% DMI, and top 8% Milk.

85

MCL DARLA C52 9547

DOB: 9/24/19 Reg: 4238164 Tattoo: 9547 B - 93.8% AR

LSF SAGA 1040Y
LACY FULL TANK 006D
LACY LAKOTA 8060

BECKTON EPIC R397 K
LSF MINOLA T7172 W9041
CCF GOLD BAR 0251
LACY SIRENA 6053

BW
78
AWW
514

5L INDEPENDENCE 560-298Y
LCCC KENTINA
LACY SUNFLOWER 309

BUF CRK THE RIGHT KIND U199
5L BLACK ADINA 525-560
LACY SUMMIT 9020
LACY SUNFLOWER 389N

AYW
841
DMPPA
101

HB	GM	CED	BW	WW	YW	Milk	ME	HPG	CEM	Stay	Marb	YG	CW	REA	Fat
137	47	10	0.2	61	90	25	-3	13	5	13	0.39	0.07	22	0.11	0.02

MCL Darla C52 9547 is a category 1B female that is sired by Lacy Full Tank 006D, the powerful and rugged son of LSF Saga 1040Y. Her dam is a high-volume daughter of 5L Independence 560-298Y. She ranks top 24% ME and top 12% HPG.

84

MCL ANNIE 046C 9519

DOB: 9/2/19 Reg: 4283505 Tattoo: 9519 A - 100% AR

LSF SAGA 1040Y
LACY ENDORSEMENT 092C
LACY SIRENA 8063

BECKTON EPIC R397 K
LSF MINOLA T7172 W9041
BIEBER MAKE MIMI 7249
LACY ROBIN 5071

BW
48
AWW
497

LACY FHG LEGACY 6097
LACY ANNIE 536R 046C
RHRA Z-LINE LC 043 536R

BIEBER MAKE MIMI 7249
LACY MS CHEROKEE 102M
LSF LIGHT CANYON 3000N
RHRA FLASH 616 043

AYW
816
DMPPA
99

HB	GM	CED	BW	WW	YW	Milk	ME	HPG	CEM	Stay	Marb	YG	CW	REA	Fat
178	49	13	-0.6	64	104	27	3	13	6	17	0.44	0.15	36	0.15	0.03

9519 is sired by Lacy Endorsement 092C, the 8063 son that is sired by LSF Saga 1040Y. Her dam is a direct daughter of Legacy 6097 that offers a balanced phenotype with exceptional udder and foot quality. She ranks top 28% GM, top 27% YW, top 24% ADG, top 25% Milk, top 19% HPG, top 7% CW, and top 26% REA.



86

LACY LAKOTA 8054 127F

DOB: 9/2/18 Reg: 4083622 Tattoo: 127F A - 100% AR

SL SIGNATURE 5615
LACY SIGNATURE 459
LACY LANA 024

SL NORSEMAN KING 2291
SL RUBY 199-01
BECKTON NEBULA P P707
LACY SIRENA 8063
LCHMN GOLD ROBBER 1909E
GMRA PRINCESS 720
LACY VICTOR 135K
VDAR REBALAS 401

BW 68
AWW 553
AYW 790
DMPPA 94

HB	GM	CED	BW	WW	YW	Milk	ME	HPG	CEM	Stay	Marb	YG	CW	REA	Fat
183	47	13	-1.7	49	80	21	0	14	7	18	0.37	0.02	17	0.13	0.01

Lacy Lakota 8054 127F is a stout made daughter of Lacy Signature 459 and backed by Lacy Lakota 8054, a direct daughter of CCF Gold Bar 0251. Udder quality, longevity, and fleshing ability is bred into this female. Her basic build, volume, and overall dimension sets her apart and is what makes her a role model brood cow. She ranks top 22% HB, top 10% HPG, top 25% Stay, top 14% YG, top 29% REA, and top 25% Fat. She will sell with a stout featured bull calf by Lacy Iron Mike 005E that was born on the first of September. **86A: BULL CALF Sired BY LACY IRON MIKE 005E (RAAA: 3717855). BORN 9/1/20**



LACY SIGNATURE 459 - SIRE OF LOT 86

87

LACY LAKOTA 449 150F

DOB: 9/14/18 Reg: 4083704 Tattoo: 150F A - 100% AR

BECKTON NEW ERA Y194
LACY GROUND GAME 067D
LACY SIRENA 8063

BECKTON NEBULA P P707
BKT LARKEISA T310 JC
BIEBER MAKE MIMI 7249
LACY ROBIN 5071
CCF GOLD BAR 0251
RHRA Z-LINE LC 043 536R
5L SUMMIT 1145-6327
RHRA ION VICTOR 236 504R

BW 72
AWW 561
AYW 830
DMPPA 102

HB	GM	CED	BW	WW	YW	Milk	ME	HPG	CEM	Stay	Marb	YG	CW	REA	Fat
169	49	9	0.1	66	105	26	6	11	3	17	0.47	0.09	34	0.11	0.01

Lacy Lakota 449 150F is one of the first Ground Game daughters to enter production. Her dam is a direct daughter of Lacy Gold Bar 1120. She is big bodied, good uddered, and offers a balanced look of quality. Numerically she ranks top 28% GM, top 26% WW, top 25% YW, top 27% ADG, top 29% Milk, top 28% Stay, top 31% Marb, top 10% CW, and top 23% Fat. Her Iron Mike bull calf was born on September 2, 2020.

87A: BULL CALF Sired BY LACY IRON MIKE 005E (RAAA: 3717855). BORN 9/2/20



LACY IRON MIKE 005E - SERVICE SIRE OF LOT 87

88

LACY LARKEISA 092D 162F

DOB: 10/9/18 Reg: 4083746 Tattoo: 162F A - 100% AR

BECKTON NEW ERA Y194
LACY NEW ERA 034D
LACY ANNIE 124 432

BECKTON NEBULA P P707
BKT LARKEISA T310 JC
LACY FHG LEGACY 6097
LACY SUNFLOWER 9110 124
BECKTON EPIC R397 K
LSF MINOLA T7172 W9041
BECKTON CODY T085 K2
LACY LAKOTA 8014

BW 45
AWW 546
AYW 842
DMPPA 97

HB	GM	CED	BW	WW	YW	Milk	ME	HPG	CEM	Stay	Marb	YG	CW	REA	Fat
204	48	16	-5.4	54	90	24	0	12	7	19	0.33	0.17	19	-0.09	0.04

162F is sired by Lacy New Era 034D, the Beckton New Era Y194 son that we have utilized exclusively within our program. On her maternal side, 162F traces to a daughter of LSF Saga 1040Y that is from the Larkeisa tribe. Numerically she ranks top 5% HB, top 9% CED, top 4% BW, top 20% DMI, and top 10% Stay. Her Breaking Point heifer is a sharp featured, attractive profiling female. **88A: HEIFER CALF Sired BY PHC BREAKING POINT 001F (RAAA: 3944383). BORN 9/11/20**

89

LACY ANNIE 0233 172F

DOB: 9/3/18 Reg: 4083648 Tattoo: 172F A - 100% AR

LSF SAGA 1040Y
PIE CINCH 4126
TKP BONNE BEL 110

BECKTON EPIC R397 K
LSF MINOLA T7172 W9041
HXC CONQUEST 4405P
TKP BONNE BEL 9031
BIEBER MAKE MIMI 7249
LACY MS CHEROKEE 102M
CCF GOLD BAR 0251
VDAR REBALAS 401

AYW 680
DMPPA 93

LACY FHG LEGACY 6097
LACY ANNIE 0233
LACY RUBY 7099

HB	GM	CED	BW	WW	YW	Milk	ME	HPG	CEM	Stay	Marb	YG	CW	REA	Fat
184	47	14	-1.8	63	99	24	-4	10	8	18	0.26	0.15	31	0.03	0.03

Lacy Annie 0233 172F is a stout made fall calving female that is sired by the performance leader, PIE Cinch 4126. She is backed by a hard-working Legacy 6067 daughter that is a ten-year-old female and has withstood the test of time. She ranks top 18% HB, top 20% ME, top 22% ME, and top 16% CW. **SAFE IN CALF TO PHC BREAKING POINT 001F (RAAA: 3944383). ESTIMATED DUE 11/25/20**

THE COMMERCIAL FEMALES

Commercial Spring Bred Heifers

LOT	TATTOO	DOB	BREED	COLOR	SIRE	BREEDING INFORMATION
100	022G	3/21/19	50% AR x 50% XX	Black	LACY Signature 459 (RAAA #1735821)	AI to LACY Revolution 298Y 095C (3523009) on 5/24/20 & PE to Andras Intrigue F164 (4109770) on 6/5/20 - 7/20/20
101	023G	3/15/19	50% AR x 50% XX	Black	LACY Signature 459 (RAAA #1735821)	AI to LACY Revolution 298Y 095C (3523009) on 5/23/20 & PE to Andras Intrigue F164 (4109770) on 6/5/20 - 7/20/20
102	024G	3/23/19	50% AR x 50% XX	Black	LACY Signature 459 (RAAA #1735821)	AI to LACY Revolution 298Y 095C (3523009) on 5/23/20 & PE to Andras Intrigue F164 (4109770) on 6/5/20 - 7/20/20
103	025G	3/11/19	50% AR x 50% XX	Black	LACY Signature 459 (RAAA #1735821)	AI to C-BAR Right Kind A345 (1723310) on 5/24/20 & PE to Andras Intrigue F164 (4109770) on 6/5/20 - 7/20/20
104	034G	3/25/19	50% AR x 50% XX	Black	LACY Signature 459 (RAAA #1735821)	AI to C-BAR Right Kind A345 (1723310) on 5/23/20 & PE to Andras Intrigue F164 (4109770) on 6/5/20 - 7/20/20
105	040G	3/15/19	50% AR x 50% XX	Black	LACY Signature 459 (RAAA #1735821)	AI to C-BAR Right Kind A345 (1723310) on 5/24/20 & PE to Andras Intrigue F164 (4109770) on 6/5/20 - 7/20/20
106	866	12/15/18	75% AR x 25% HP	Red Baldy	LACY 1776 002D (RAAA #3533888)	AI to LACY Full Tank 006D (3533890) on 5/23/20 & PE to LACY Full Tank 006D (3533890) on 6/5/20 - 7/20/20
107	867	12/16/18	100% AR	Red	LACY 1776 002D (RAAA #3533888)	AI to LACY Legacy 6097 417 (1735825) on 5/24/20 & PE to LACY Full Tank 006D (3533890) on 6/5/20 - 7/20/20

LOTS 100 - 107 ARE OFFERED BY LACY'S RED ANGUS - DREXEL, MO

Commercial Fall Open Females

LOT	TATTOO	DOB	BREED	COLOR	SIRE	9/23/20 WEIGHT	PELVIC DATE	PELVIC HEIGHT	PELVIC WIDTH	PELVIC AREA (CM)	TRACT SCORE
108	072G	9/15/19	50% AR x 50% XX	Black	LACY Gold Bar 1120 (RAAA #1494991)	945	9/22/20	15	13	195	4
109	096G	9/22/19	87.5% AR x 12.5% GV	Red	LACY Legacy 417 092E (RAAA #3874905)	945	9/23/20	15	12.5	188	5
110	110G	10/15/19	87.5% AR x 12.5% GV	Red	LACY Signature 178E (RAAA #3875051)	840	9/24/20	15	12.5	188	5
111	112G	10/16/19	50% AR x 50% XX	Black Baldy	LACY Gold Bar 1120 (RAAA #1494991)	935	9/25/20	15	13	195	3
112	113G	10/12/19	50% AR x 50% XX	Black	LACY Gold Bar 1120 (RAAA #1494991)	1005	9/26/20	14.5	12	174	4
113	100G	9/25/19	87.5% AR 12.5% HP	Red	LACY Full Tank 006D (RAAA #3533890)	800	9/27/20	15	12.5	188	5
114	119G	8/29/19	75% AR 25% GV	Red	C-Bar Right Kind A345 (RAAA #1723310)	760	9/27/20	14	12	168	5

LOTS 108 - 114 ARE OFFERED BY LACY'S RED ANGUS - DREXEL, MO

THE COMMERCIAL OPEN FEMALES

LOT	TATTOO	DOB	BREED	COLOR	SIRE	9/23/20 WEIGHT	PELVIC DATE	PELVIC HEIGHT	PELVIC WIDTH	PELVIC AREA (CM)	TRACT SCORE
115	217	Sept. 2019	87.5% AR x 12.5% GV	Red	LACY FOUNDATION 448 (RAAA #1735777)	830	9/15/20	16	12.5	200	5
116	218	Sept. 2019	87.5% AR x 12.5% GV	Red	LACY FOUNDATION 448 (RAAA #1735777)	830	9/16/20	15.5	13	202	5
117	219	Sept. 2019	87.5% AR x 12.5% GV	Red	LACY FOUNDATION 448 (RAAA #1735777)	790	9/17/20	16.5	14.5	239	3
118	224	Sept. 2019	87.5% AR x 12.5% GV	Red	LACY SIGNATURE 066E (RAAA #3874867)	825	9/18/20	16.5	12	198	5
119	225	Sept. 2019	87.5% AR x 12.5% GV	Red	LACY SIGNATURE 066E (RAAA #3874867)	755	9/19/20	16	14	224	4
120	229	Sept. 2019	87.5% AR x 12.5% GV	Red	LACY LEGACY 6097 469 (RAAA #1735809)	755	9/20/20	16	12.5	200	4
121	241	Sept. 2019	87.5% AR x 12.5% GV	Red	LACY LEGACY 6097 469 (RAAA #1735809)	705	9/21/20	16	13	208	5
122	503	Sept. 2019	87.5% AR x 12.5% GV	Red	LACY Signature 459 (RAAA #1735821)	720	9/22/20	15	13	195	4
123	504	Sept. 2019	87.5% AR x 12.5% GV	Red	LACY Signature 459 (RAAA #1735821)	710	9/23/20	15	11.5	173	3
124	581	Sept. 2019	87.5% AR x 12.5% GV	Red	LACY Cornerstone 114E (RAAA #3874943)	730	9/24/20	14.5	12	174	4
125	583	Sept. 2019	87.5% AR x 12.5% GV	Red	LACY Cornerstone 114E (RAAA #3874943)	740	9/25/20	15	12	180	3
126	584	Sept. 2019	87.5% AR x 12.5% GV	Red	LACY Cornerstone 114E (RAAA #3874943)	750	9/26/20	16	13	208	4
127	593	Sept. 2019	87.5% AR x 12.5% GV	Red	LACY Cornerstone 114E (RAAA #3874943)	715	9/27/20	15	11.5	173	4
128	598	Sept. 2019	87.5% AR x 12.5% GV	Red	LACY Cornerstone 114E (RAAA #3874943)	830	9/28/20	15	12	180	5
129	599	Sept. 2019	87.5% AR x 12.5% GV	Red	LACY Cornerstone 114E (RAAA #3874943)	825	9/29/20	16	12.5	200	5
130	729	Sept. 2019	87.5% AR x 12.5% GV	Red	LACY Expectation 325 (RAAA #1669579)	755	9/30/20	14	12	168	4

LOTS 115 - 130 ARE OFFERED BY PERRYMAN - URICH, MO

LOT	TATTOO	DOB	BREED	COLOR	SIRE	9/23/20 WEIGHT	PELVIC DATE	PELVIC HEIGHT	PELVIC WIDTH	PELVIC AREA (CM)
131	33	8/5/19	50% RA x 50% Reg Limflex	Red	LACY Endorsement 092C (RAAA #3523006)	815	8/22/20	16	13	208
132	35	8/27/19	50% RA x 50% Reg Limflex	Black	LACY Endorsement 092C (RAAA #3523006)	810	8/22/20	16	13	208
133	40	8/14/19	50% RA x 50% Reg Limflex	Red	LACY Endorsement 092C (RAAA #3523006)	775	8/22/20	17	13	221
134	41	8/25/19	50% RA x 50% Reg Limflex	Red	LACY Endorsement 092C (RAAA #3523006)	735	8/22/20	16	12	192
135	42	8/7/19	50% RA x 50% Reg Limflex	Black	LACY Endorsement 092C (RAAA #3523006)	775	8/22/20	15	13	195

LOTS 131 - 135 ARE OFFERED BY PRAIRIE CREEK RANCH - RICHARDS, MO

Contact Lacy's Red Angus to purchase semen



LACY 17776 002D



LACY MS ANNIE 6132 071G - 1776 DAUGHTER



MCL DESPERADO 003G - 1776 SON

Sire: 5L INDEPENDENCE 560-298Y
Dam: LACY ANNIE 405
RAAA: 4083656

TOP 20%
HB, CED, CEM,
MARB, YG, REA, FAT

Legacy



LACY LEGACY 6097 417

LACY FHG LEGACY 6097 417 x LACY LAKOTA 122 | RAAA: 1735825



Legacy Daughter



Legacy Son



Legacy Daughter

Contact the Legacy Ownership to purchase semen
Dan Lacy: 913-909-1912 | Nick Curtis: 573-999-3887



RAAA: 4083808
SIRE: LACY SIGNATURE 459
DAM: LACY LAKOTA 8105
Semen for Sale



FREIGHT TRAIN

Contact us to purchase semen:
Lacy's Red Angus
Dan Lacy - 913-909-1912
Rutt Red Angus
Quinn Rutt - 402-984-0961

LACY

FOUNDATION

REG: 1735777 | LACY CHATEAU 6089 x LACY MS ANNIE 6132



ORDER SEMEN ONLINE TODAY!
PUREBEEFGENETICS.COM



LACY MS ANNIE 6132
DAM OF FOUNDATION



P.O. BOX 675 | PERKINS, OK 74059
MIKE MARLOW: (405) 880-0108



LACY

IRON MIKE

005E

	HB	GM	CED	BW	WW	YW	ADG	DMI	Milk	ME	HPG	CEM	STAY	Marb	YG	CW	REA	FAT
EPD	198	49	12	-1.6	84	126	0.26	2.02	27	1	10	10	18	0.42	0.08	40	0.46	0.04
PCTL	10%	26%	58%	51%	2%	6%	23%	92%	28%	55%	66%	9%	17%	43%	38%	8%	5%	79%



Rodney, Kay, and Mackenzie Mawson

Nick, Callie, and Stetson Curtis
573-999-3887



Dan and Kelly Lacy
913-909-1912



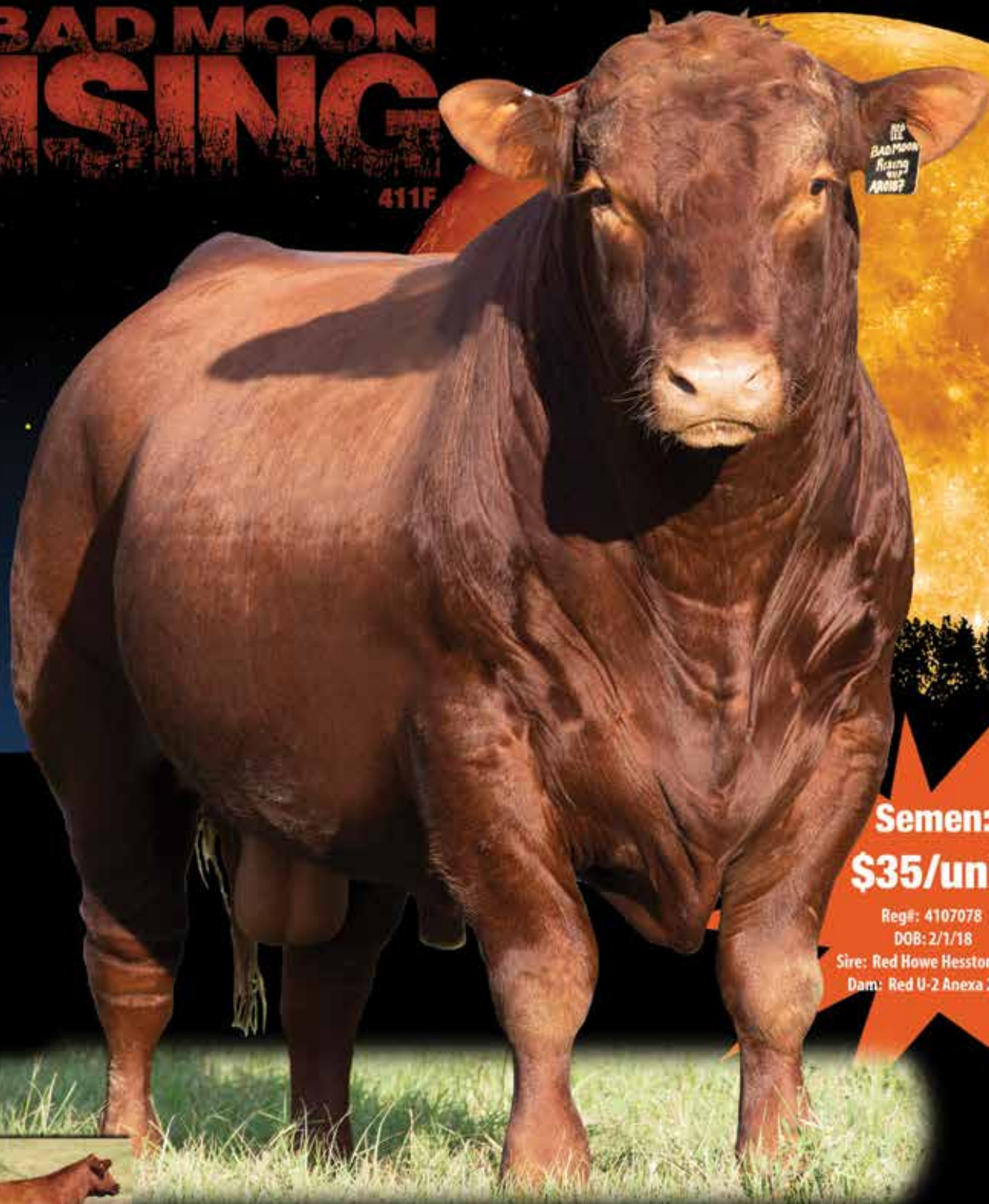
LACY IRON MIKE 005E

RAAA #3717855

TYSON X LEGACY X GOLD BAR

SEMEN AVAILABLE

Red U2 **BAD MOON
RISING**
411F



**Semen:
\$35/unit**

Reg#: 4107078

DOB: 2/1/18

Sire: Red Howe Hesston 212C

Dam: Red U-2 Anexa 271Y



271Y, dam of Bad Moon Rising

- *The first calves are here! They are stout and have a great look!*
- *Bad Moon Rising is a maternal brother to Reckoning, Entourage and Fortunate son. His sire, Hesston 212C, represents an outcross opportunity in a powerful design.*

Lacy's
Red Angus
Drexel, MO
Balanced & Proven Genetics

Dan & Kelly Lacy
17246 NW Co Rd 12001
Drexel, MO 64742
(913) 909-1912
dan@lacysredangus.com

LAZY 3
BUILDING. BETTER. BEEF.

Cheremie Viator
(979) 777-9419
CheremieV@gmail.com

GIVE CALVES A WEANING-TIME BOOST

Your weapon against weaning stress and health challenges:
Purina® starters with RX3® Immune Support Technology



Drive calves to the feed bunk

Purina® starters are highly palatable to encourage calves to start and continue eating.



Help your profit potential

Keeping calves healthy through weaning means more potential pounds to sell.



Support healthy calves

Purina® starters with RX3® Immune Support Technology prime calves' immune systems to better handle weaning stress, so they quickly recognize health challenges, respond appropriately and return to optimal health.¹



Optimize calf performance

Calves fed Purina® starters with RX3® Immune Support Technology had more consistent average daily gain, averaged 6 pounds heavier over a 30-day period and bounced back from health challenges faster compared to control calves.²

For more information on Purina starter feeds containing RX3 Technology and for all of your feed and pasture needs, contact Mid-West Fertilizer Livestock Production Specialist Whitney Shaw at (417) 321-2651 or wshaw@landolakes.com.



FEED GREATNESS®

ADD VALUE TO YOUR PROGRAM

by utilizing fescue-based **RED ANGUS** bulls & females
bred by **OUR** members for **YOUR** environment



Why Red Angus?

- Red in color with pigmented skin
- Improved heat tolerance
- Naturally polled & very docile
- Red crossed red always breeds true
- Resistant to pinkeye & sunburned udders
- High quality carcass with excellent intra muscular marbling
- Red Angus carry no diluter genes & avoids the grays that result when crossbreeding with blacks.

RAISED ON FESCUE TO WORK ON FESCUE

MISSOURI
**RED
ANGUS**
ASSOCIATION



For additional event and sales information visit our website
MISSOURIREDANGUS.COM

**Helps
Prevent
Calf
Scours**

MFA RICOCHET FESQ MAX

**Mineral
supplement
for cattle**

- Vitamin fortified for improved animal health; covers animal's dietary vitamin requirements
- Supplies essential minerals of high bio-availability: calcium, phosphorus, magnesium, sodium, selenium, iodine, zinc, manganese, copper, cobalt; covers animal's mineral requirements
- Medicated for control of anaplasmosis for improved animal health
- Options available: nonmedicated, with CTC, and with Methoprene IGR/CTC, an effective pesticide to reduce the pressure of hornfly predation

- Flavored for good acceptance, consistent intakes
- **Uses Rain-Off® technology** to reduce weather damage to exposed product
- **Uses Shield™ Technology** to improve colostrum quality and production and stimulate the animal's immune response
- Uses essential oils that have been shown to improve animal performance grazing fescue pastures
- When Ricochet is used as a yearlong mineral program, it has high enough magnesium levels to prevent grass tetany



Protect your herd's health with Ricochet mineral.

For information on MFA mineral supplements call 573-876-5473 or visit www.mfa-inc.com.



www.mfa-inc.com



MADE FOR AGRICULTURE®

PROFIT BUILDER REPRO TUB

Designed to have bulls in top reproductive condition. Should be fed up to 90 days prior to breeding soundness exams, semen collection or turnout.

PROFIT BUILDER 14 MG CM TUB

This all-natural protein, high energy, mineral tub is designed to be fed year around to keep cows body condition score up, increase breed back, increase milk production and increase weaning weights.

CHAMPION BUILDER SHOW & STRESS TUB

Developed for high stress and high expectation situations. This tub can be fed continuously to support overall health and performance.

**MISSOURI LIVESTOCK
SUPPLEMENTS**

5592 Highway K • Brighton, MO 65617
Cell: 417-298-2971 • Plant: 417-376-2677
Shelby Skinner - Territory Sales Rep, Missouri
Email: shelbyskinner110@gmail.com

Results in
Every Tub!

These tubs all contain Availa 4, Agrimos, Probiotics, AP5 & Natural Garlic.





Protect your
INVESTMENT
Put your
BULL
In the
TANK



Custom Semen Collection

Bull Housing

Semen Storage & Shipping

Breeding Supplies

www.ShowMeGen.com

417-736-2125

**8134 E. State Hwy C
Strafford, MO 65757**



BRANDING IRON BBQ
SINCE 1991

2027 N Commercial St. Harrisonville, MO

816-380-2214

Tues.-Thurs. 11 a.m. to 9 p.m.
Fri. & Sat. 11 a.m. to 9:30 p.m.

brandingironbbque.com



**PRIME CUT
ULTRASOUND**

*Improving the quality and genetics of your beef through
Real Time Ultrasound Imaging.*



Cell: 785-229-5174

Home: 913-898-4218

trish@primecutultrasound.com

www.primcutultrasound.com

TRISH BREUEL

Certified Ultrasound Technician

4966 W. 1475 Road

Centerville, KS 66014

Deerfield Cattle Co., LLC

"Serving The Local Cattleman"

We can offer "Premium Dollars" on
Red Angus & Red Angus Cross cattle.



Give us a call & we will help you develop a plan
to market your Red Angus Stockers & Feeders.

Bob Walrod

Cattle Pens = 417-966-7211

Cell = 417-448-9055

Fax = 417-966-7212

Deerfield Cattle Co., LLC

Hwy 43 & Hwy "H"

Deerfield, Missouri 64741

Hours; Friday & Saturday ----- 7:30 AM – 12:30 PM

Lacy's Red Angus
17246 NW CR 12001
Drexel, MO 64742

Presorted
First Class
US Postage
PAID
SlateGroup



VISIT OUR WEBSITE FOR MORE INFORMATION AT
LACYSREDANGUS.COM