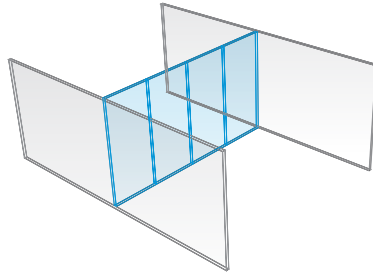


# MOBILE WALLS

Your flexible space.

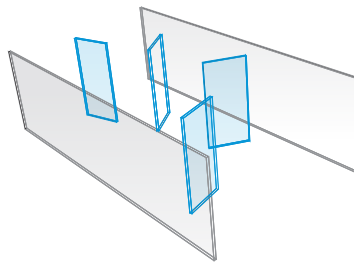
A wall where **you need it.**



Say goodbye to **complicated and expensive conversions.**

With our mobile wall you can manage everything with ease and most importantly **in a few minutes.**

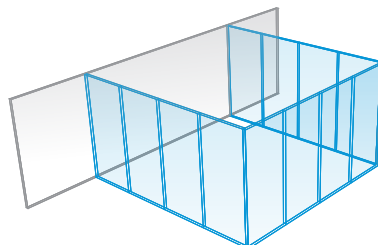
**Creativity is not limited.**



Thanks to our unique technology of **inflatable bags** it only takes a **push of a button to fix our mobile walls in place.**

No expert installers needed.

A room **in a few minutes.**



Immerse yourself in work with **sound-proofing** which will take care of **your privacy.**

The noise from the neighbouring office will be a thing of the past.

[LIKO-PARTITIONS.COM](https://www.liko-partitions.com)

# LIK0-Space

// a system of ceiling rails

37dB

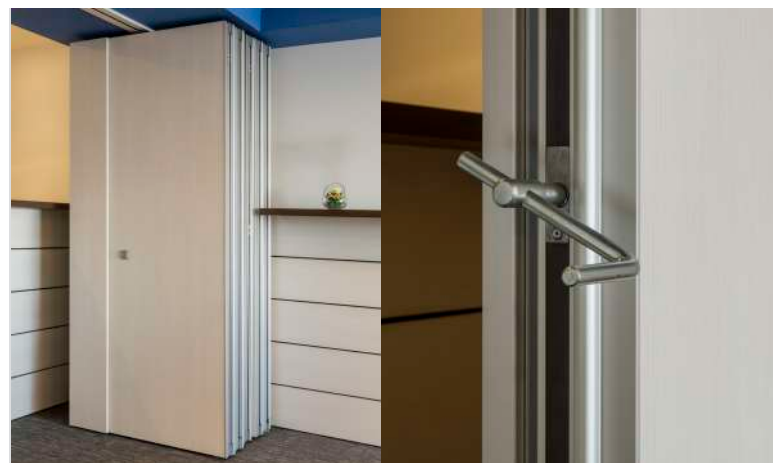
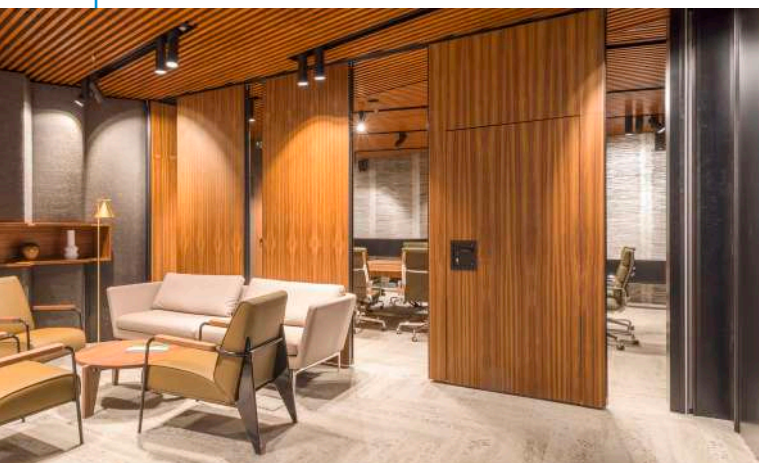
43dB

47dB



## Effective dividing the workspace is now even easier.

- The ideal solution for any space – **office, hotel, gym, community centre, shopping areas...**
- No need to build anything – **LIK0-Space offers the most effective use of space.**
- **Constructing and unfolding** the wall can be managed quickly and effortlessly **by one person. In a few minutes you can have several rooms.**
- **A large selection of surfaces** – full-filled LTD, veneer, wallpaper or fabric...
- **Wall Parking** tailored **to the room and the layout possibilities.**



Panel suspension:	rails
Module thickness:	100 mm / 120 mm
Width of standard panel:	600 – 1,250 mm
Maximum module height:	4,000 mm
Operation:	manual / handle
Profiles:	anodized aluminium / RAL
Surfaces:	solid LTD, veneer, wallpaper, fabric
Glass:	glazed GDD module
Doors:	single / Thickness. 40 mm or 100 mm

5  
min



# LIKO-Space+

// a system of ceiling rails



## We are the sole manufacturer of this unique vacuum system.

- A wide assortment of suitable **rail systems**.
- **Solid and glass panels** of the mobile walls.
- Quality **sound insulation**.
- Professional **technical support and advice** during the design process.
- **Setting up the panels with a push of a button**. To release them, simply suck out the air **with a few strokes of the special pump**.



Panel suspension:	rails
Module thickness:	100 mm
Width of standard panel:	600 - 1,250 mm
Maximum module height:	4,000 mm
Operation:	button / pump
Profiles:	anodized aluminium / RAL
Surfaces:	solid LTD, veneer, wallpaper, fabric
Glass:	partly glazed module
Doors:	single / Thickness. 40 mm



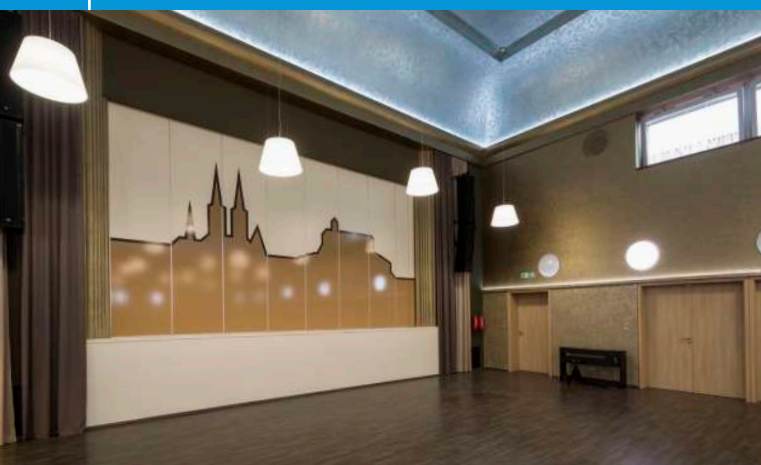
# VACUWALL

// unlimited variability of space



**The only mobile wall in the world which gives your space unlimited variability.**

- You can construct the wall **within a few minutes and anywhere**.  
And you can reconstruct it as often as **and to the extent that you want** or need.
- VACUWALL® is **the only mobile wall** for spaces **with no loading of the ceiling structure**.
- **It saves you time and money** during assembly and rebuilding because you can **simply do it all yourself**.



**Panel suspension:** no  
**Module thickness:** 100 mm  
**Width of standard panel:** 600 – 1,250 mm  
**Maximum module height:** 4,000 mm  
**Operation:** button / pump  
**Profiles:** anodized aluminium / RAL  
**Surfaces:** solid LTD, veneer, wallpaper, fabric  
**Glass:** partly glazed module  
**Doors:** single / Thickness. 40 mm



# IN-HOUSE MANUFACTURING

Partitions and partition walls.

Partitions and dividing walls **are manufactured directly at our production plant** in Slavkov u Brna, which brings our customers benefits in the form of **high-quality products and meeting delivery dates**. All of our products are tested according to **European Standards in accredited testing institutes, including their environmental aspects**.



**4**  
AFFILIATES

**16**  
EXPORT OFFICES  
IN COUNTRIES

**250**  
EMPLOYEES

**30 million**  
**EURO**  
TURNOVER IN 2017

**LIKO-S was founded in 1992.**  
It currently ranks among the **top European companies** in its field.

All products are tested according to European standards in accredited testing institutes including the LEED environmental standard.

#### ENERGY

Builds administrative, logistical and production facilities for business. Specializes in corporate headquarters for medium and small business. Insulates facilities with the revolutionary method from Canada - the system of spray-on heat insulation®.

[www.liko-halls.com](http://www.liko-halls.com)  
[www.liko-inhall.com](http://www.liko-inhall.com)

#### PRODUCTION

Specializes in a wide range of materials such as steel, stainless steel, heat-resistant materials and aluminium. Production of precision metal parts - from the concept design to the final surface treatment. We export more than 90% of this division's production.

[www.liko-welding.com](http://www.liko-welding.com)

#### INTERIORS

We supply prefabricated systems for the creation of interior space in buildings - adjustable and sliding partitions and in-hall units® for halls. Acoustic ceilings, LIKO-Glass® laminated glass and multimedia interactive walls SMART-i-WALL®.

[www.liko-partitions.com](http://www.liko-partitions.com)  
[www.liko-inhall.com](http://www.liko-inhall.com)