



LIKOfarm<sup>®</sup> Solutions

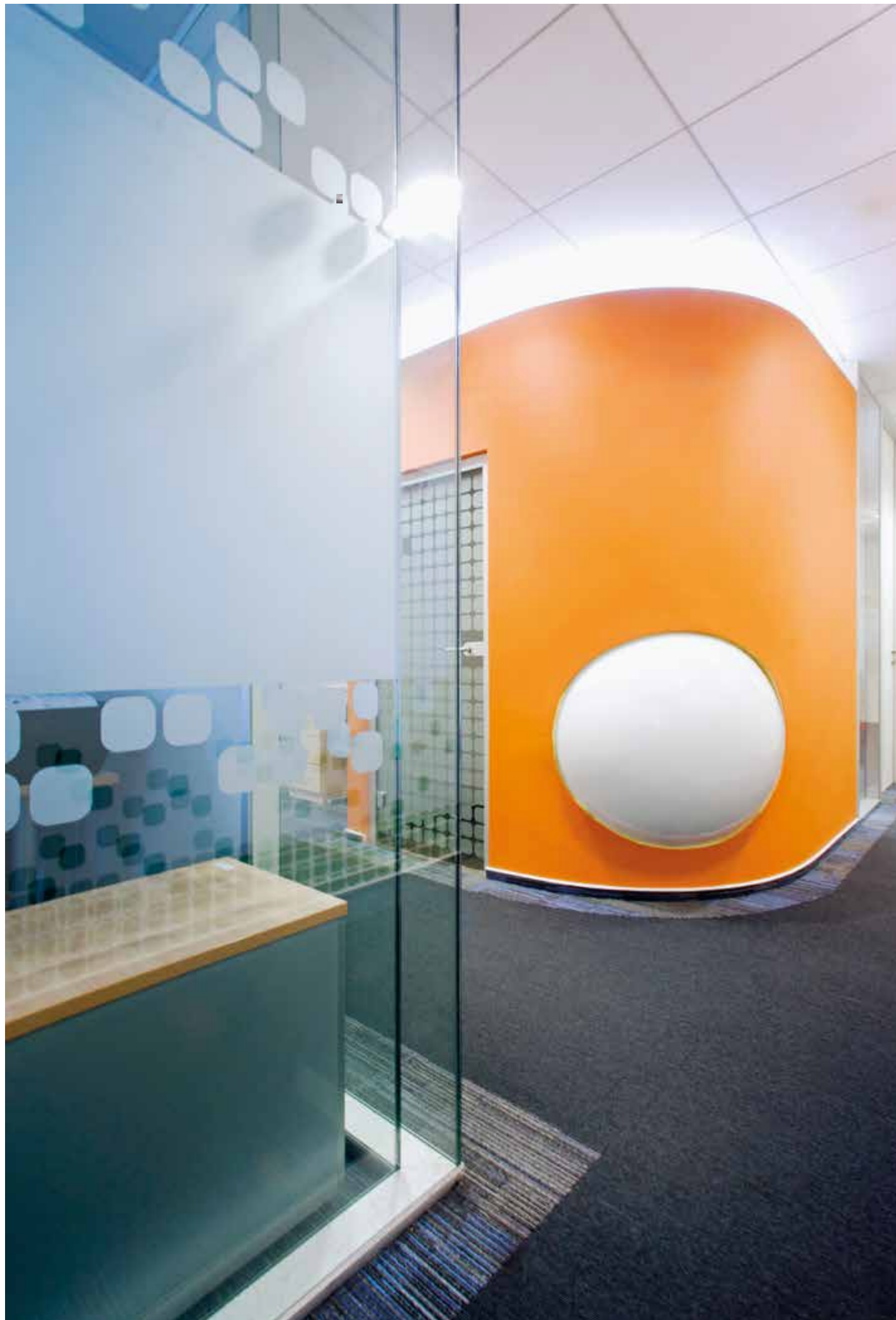


**interiors**

**To be at the very top, to be the best in our field and to provide our customers with the best possible services.**

„Through this strategy and through the rigorous demands we set on ourselves, we are able to create new sources of development and growth. Our work is our passion and we enjoy it. We value quality work and reward quality people.“

Dipl. Ing. Libor Musil  
Chairman of the board



**OMEGA 100**  
The classic relocatable partition system. Easy to install and demount



**OMEGA 100.1**  
Innovated partition wall system Omega 100 with thin vertical aluminium frame



**MICRA I**  
Light fully glazed frameless partitions combining transparency and flexibility



**MICRA II**  
Light double glazed frameless partitions for better privacy at the same transparency



# OMEGA 100

This system combines fast and easy change in layout without disrupting the suspended ceiling. Aluminium profiles with high quality finish, combined with a robust construction and high technical standards, offer a wide range of solid and glazed solutions and a choice of matching doors in many attractive colours. This system uses vertical connections by means of an omega profile with a PVC cover strip.

For usage as non-loadbearing partitions.

## TECHNICAL SPECIFICATIONS

### SOUND INSULATION:

Solid partition:	<b>Rw 47 dB standard up to Rw 49 dB VIP</b>
Glass partition:	<b>Rw 36-45 dB depending on type of glass</b>
Door units:	<b>up to 39 dB (Wooden) up to 37 dB (Alu-framed) up to 32 dB (Fully glazed) up to 34 dB (Glassdesign)</b>

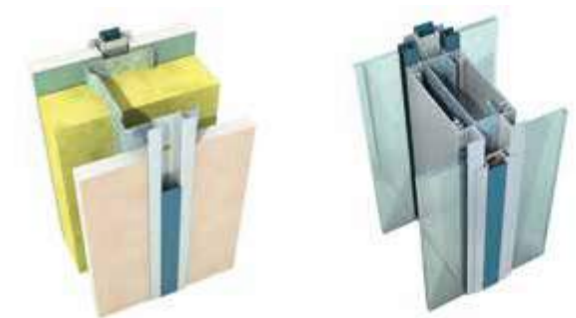
### FIRE RESISTANCE (LIMITED POSSIBILITY):

Solid partition:	<b>EI 60</b>
Glass partition:	<b>EI 30</b>
Door units:	<b>EI 30</b>

### DIMENSIONS:

Partition thickness:	<b>100 mm</b>
Standard module width:	<b>1 200 mm (can be adjusted)</b>
Standard module height:	<b>3 000 mm</b>
Maximum partition height:	<b>4 000 mm</b>
Standard clear door passage:	<b>800 × 2 100 mm</b>

All tests executed according to European norms. All sound insulation values are always laboratory values.





OMEGA 100





# OMEGA 100.1

This system replaces the classic Omega combination of an aluminium profile and PVC insert with a steel omega profile and slim aluminium cover strip, giving the system a more uniform look.

Aluminium profiles with high quality finish, combined with a robust construction and high technical standards, offer a wide range of solid and glazed solutions and a choice of matching doors in many attractive colours.

For usage as non-loadbearing partitions.

## TECHNICAL SPECIFICATIONS

### SOUND INSULATION:

Solid partition:	<b>Rw 47 dB standard up to Rw 49 dB VIP</b>
Glass partition:	<b>Rw 36-45 dB depending on type of glass</b>
Door units:	<b>up to 39 dB (Wooden) up to 37 dB (Alu-framed) up to 32 dB (Fully glazed) up to 34 dB (Glassdesign)</b>

### DIMENSIONS:

Partition thickness:	<b>100 mm</b>
Standard module width:	<b>1 200 mm (can be adjusted)</b>
Standard module height:	<b>3 000 mm</b>
Maximum partition height:	<b>4 000 mm</b>
Standard clear door passage:	<b>800 × 2 100 mm</b>

All tests executed according to European norms. All sound insulation values are always laboratory values.





OMEGA 100.1





# MICRA I

One simple profile, glass panels to complete it and the Micra is installed. The utmost transparency and yet some privacy for quiet meetings.

Door solutions to match, as well as profiles in hitec-looking anodised aluminium or sophisticated colour schemes.

This system uses vertical connections by means of transparent tape.

For usage as non-loadbearing partitions.

## TECHNICAL SPECIFICATIONS

### SOUND INSULATION:

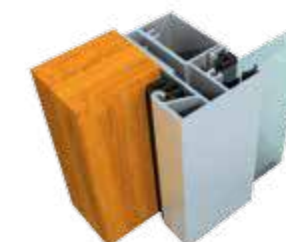
Glass partition:	<b>Rw 31-37 dB (depending on glass type)</b>
Door units:	<b>up to 35 dB (Wooden)</b> <b>up to 30 dB (Alu-framed)</b> <b>up to 32 dB (Fully glazed)</b> <b>up to 34 dB (Glassdesign)</b>

### DIMENSIONS:

Glass thickness:	<b>10, 12 mm</b>
Standard module width:	<b>1 000 mm</b>
Standard module height:	<b>3 000 mm</b>
Maximum partition height:	<b>3 300 mm</b>
Standard clear door passage:	<b>800 x 2 100 mm</b>

Doorframe: **Aluminium**

All tests executed according to European norms. All sound insulation values are always laboratory values.







MICRA I





## MICRA II

Multiply the Micra I profile, join it together and Micra II is born. Again the utmost transparency and even more privacy for quiet meetings. The further advantage of Micra II is that due to its width of 100mm, it can be perfectly combined with all other LIKO-S partition systems.

Door solutions to match, as well as profiles in hitec-looking anodised aluminium or sophisticated colour schemes.

This system uses vertical connections by means of transparent tape.

For usage as non-loadbearing partitions.

### TECHNICAL SPECIFICATIONS

#### SOUND INSULATION:

Glass partition:	<b>Rw 39–45 dB depending on type of glass</b>
Door units:	<b>up to 39 dB (Wooden)</b> <b>up to 37 dB (Alu-framed)</b> <b>up to 32 dB (Fully glazed)</b> <b>up to 34 dB (Glassdesign)</b>

#### DIMENSIONS:

Partition thickness:	<b>100 mm</b>
Glass thickness:	<b>10, 12 mm</b>
Standard module width:	<b>1 000 mm</b>
Standard module height:	<b>3 000 mm</b>
Maximum partition height:	<b>3 300 mm</b>
Standard clear door passage:	<b>800 × 2 100 mm</b>

Doorframe: **aluminium**

All tests executed according to European norms. All sound insulation values are always laboratory values.





MICRA II

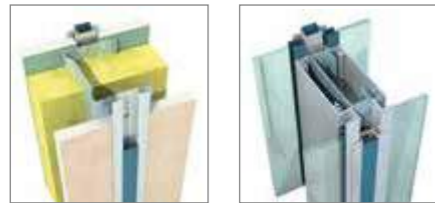


# LIKOfarm® - Guide through system partitions

	Modulation				Vertical connection	Profile colour	System technical possibilities							Fire protection			Sound insulation Rw (dB)										
	Solid module	Double glazed module	Single glazed module - centered	Single glazed module - sides			Combination: solid part x glazed	Covering PVC strip in connection	Covering Aluminum strip in connection	Connecting self-adhesive 3M tape	Natural ELOX surface	RAL powder-coated surface	Dilatation in both directions	Choice of width - solid module	Choice of width - glazed module	Standard width of the module	Standard height of the module	Maximum height of the module	Width of visible connection - solid mod.	Width of connection - glazed module	Partition thickness	Solid module	Glazed module	Door leaf	Sound insulation - Solid module	Sound insulation - Glazed module	Sound insulation - Aluminium frame door
Omega 100	•	•	•	•	•	•	•	•	•	•	•	•	•	1 200	3 000	4 000	32	46/80	100	•	•	•	47-49	36-45	22-37	21-39	20-34
Omega 100F	•	•	•	•	•	•	•	•	•	•	•	•	•	900/1 200	3 000	3 000	43	80	100	EI/EW 60	EI45/EW 60	EI/EW 30	•	•	•	•	•
Omega 100.1	•	•	•	•	•	•	•	•	•	•	•	•	•	1 200	3 000	4 000	37	37	100	•	•	•	47-49	36-45	22-37	21-39	20-34
MICRA I	•	•	•	•	•	•	•	•	•	•	•	•	•	1 000	3 000	3 300	•	2	20	•	•	•	•	31-37	22-30	21-32	20-34
MICRA II	•	•	•	•	•	•	•	•	•	•	•	•	•	1 000	3 000	3 300	2	2	100	•	•	•	•	39-45	22-37	21-39	20-34

• Not possible      • Possible

OMEGA 100



OMEGA 100.1



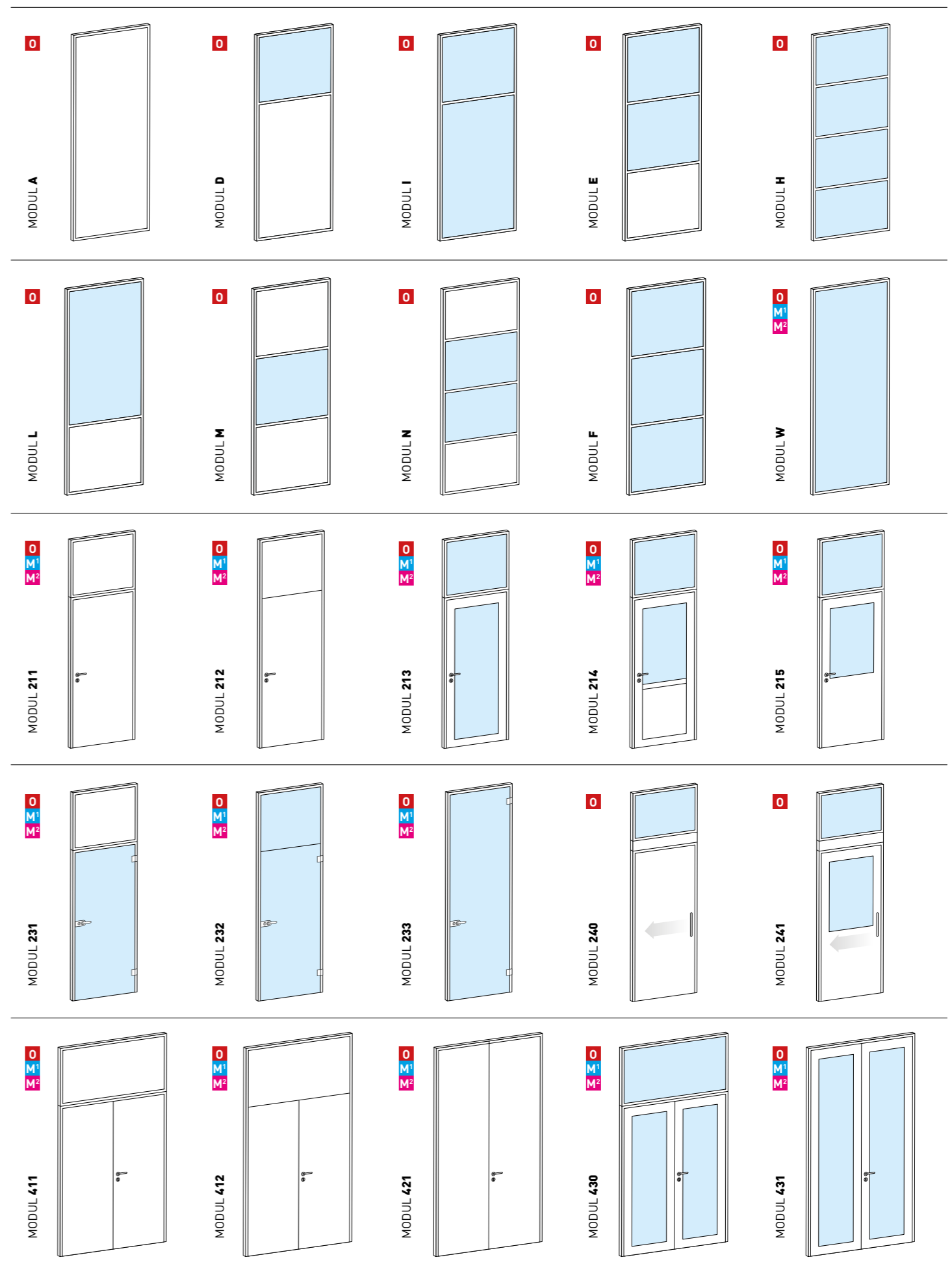
OMEGA 100F



MICRA I



MICRA II



○ OMEGA

Ⓜ MICRA I

Ⓜ² MICRA II

# TIME FOR DETAIL

Connection walls and ceilings without compromise

## Acoustics, design, functionality

Time for Detail is a new system connection of relocatable partitions with the ceiling structure. It is a unique solution which combines an almost invisible joint of the wall and the ceiling together with a brilliant solution of acoustical barrier.

With this system the partition can be installed so that the ceiling profile becomes a part of the ceiling and thus fulfils modern design requirements. Moreover, Time For Detail is the only system solution on the market which eliminates acoustical issues above the partition and also improves the stability of the connection of the wall and the ceiling.

TFD is compatible with standard ceiling construction components and its use and installation is therefore very simple.

### TECHNICAL SPECIFICATIONS

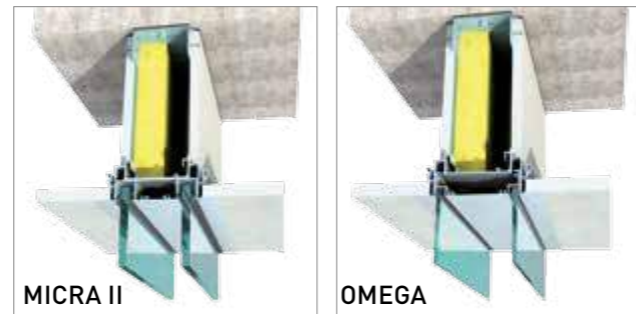
#### BASIC INFORMATION:

System:  
Possible types of ceilings (to connect):  
Variants of acoustic barrier:

**Omega; Micra II**  
**Plasterboard, mineral ceiling**  
**Mineral insulation with Al. foil; plasterboard**

It's possible to use for new and also existing ceilings  
Acoustic value of barrier:

**Rw= 40 - 41 dB (insulation)**  
**Rw= 45 dB (plasterboard)**



LIKO-S: "WHY SETTLE FOR LESS?"





“THE BEST IS TO BE THE BEST”



## COMPANY STRUCTURE



The LIKO-S production facility is equipped with excellent production tools and equipment. The production capacity is flexible and can meet the most demanding client's requirements.

Our warehouse capacities stand for fast deliveries and adequate packing.

LIKO-S' employees are dedicated to their jobs and proud to work for the company and of the products they produce.

LIKO-S products are tested according to the European norms in accredited test institutes.

Our production holds the ISO 9001 and 14001 standard certificate for quality management systems.



LIKOform GREEN® meets the environmental requirements of LEED® standards for materials and products used in the building premises.



### ENERGY

The Energy Division focuses on energy savings. We build new buildings and insulate already existing structures. Energy uses the experience we gained under the Living Buildings® and Smartisol® insulation program.

### PRODUCTION

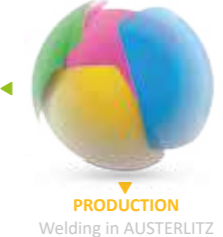
The Production Division manufactures technological lines and their parts from carbon and stainless steel and aluminum. Our products are included in the supply of technology units throughout Europe. 70 employees work in the Production Division.

### INTERIORS

The Interiors Division manufactures and installs adjustable and sliding partitions and built-in structures® for halls. We are one of the world leaders in this field. We are building a joint venture with our business partners on the production of partitions in India.

### INTERNATIONAL

LIKO-Style®



ENERGY  
Icynene®  
Living Buildings®  
Living facade®

LIKOfon®  
LIKOform®  
LIKO-Space®  
in LIKO®  
INTERIORS  
LIKO-Glass®  
VACUWALL®  
SMART-I-WALL®  
SilentPET®

PRODUCTION  
Welding in AUSTERLITZ

### About LIKO-S

LIKO-S is an internationally successful family company established in 1992. The main business fields are production and installation of interior partition systems, building of industrial halls, applications of special insulation foam Icynene®, production of steel constructions and technological lines. The annual turnover of the whole group is almost 3 million Euros. The company owners invest the majority of profit back to technology, R&D, employees education and other development investments. LIKO-S exports about one third of the total production to various European countries. In recent years, LIKO-S brought to the world couple of new innovations that have changed the whole particular industries. This goes hand in hand with the newly built R&D center LIKO-NOE® and innovative products SMART-I-WALL® and VACUWALL®.

All products are tested according to European norms in accredited testing institutes, including the environmental requirements of LEED.



LIKO-S, a.s., U Splavu 1419, CZ-684 01 Slavkov u Brna, Czech Republic,  
tel.: +420 5 44 22 11 11, e-mail: info@liko-s.cz

**[www.liko-s.com](http://www.liko-s.com)**