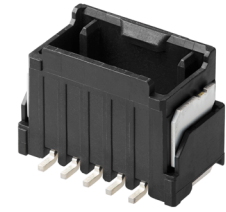


Micro-One Wire-to-Board Connector with Integrated ISL

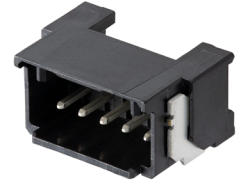
molex

Compact Micro-One Wire-to-Board Connector with integrated ISL and potting capability, providing secure electrical contact, superior mating retention and protection against harsh environment conditions

Features and Advantages



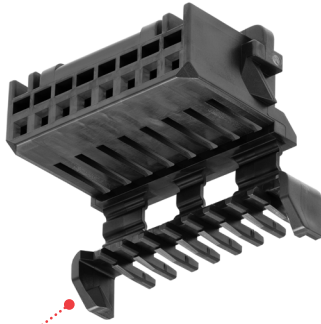
Micro-One Connector, Vertical Version



Micro-One Connector, Right-Angle Version



Micro-One Receptacle housing with integrated ISL

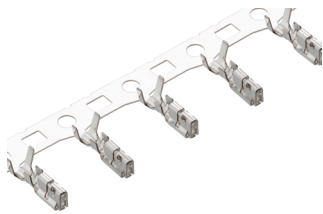


Receptacle Housing

Independent secondary lock (ISL)
Detects incomplete terminal insertion

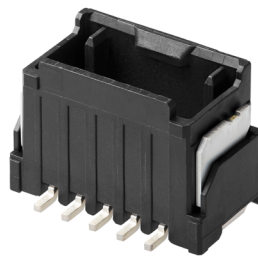
2.00mm pitch low-profile design
Reduces weight and saves space

UL certified connectors
Ensures reliability



Crimp Terminal

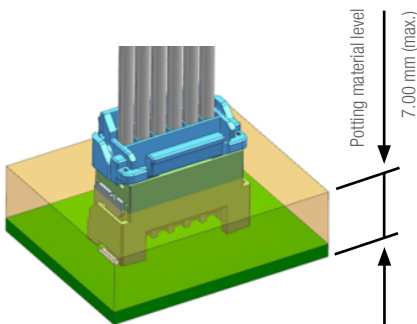
56134-9001 for AWG22-24
56134-9002 for AWG26-28



Vertical Header

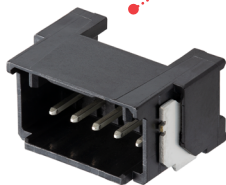


2- to 8- circuit vertical and right-angle header assembly
Offers design flexibility

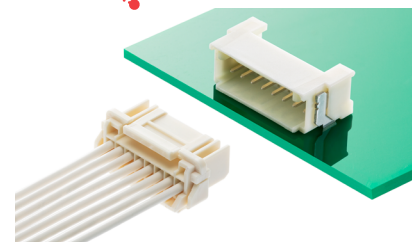


Vertical Header with Potting Capability (217063 Series)

Potting liquid (up to 7.00 mm height)
Prevents ingress of dust and moisture



Right-Angle Header



Right-Angle Header

Micro-One Wire-to-Board Connector with Integrated ISL

molex

Market and Applications

Consumer

- Refrigerators
- Air conditioners
- Hot water gas heaters

Industrial

- Power tools
- Test equipment
- Robots
- Factory automation
- Drones
- Vending machines



Vending Machine



White Goods



Drones

Specifications*

REFERENCE INFORMATION

Packaging:
 Header – Embossed
 Receptacle Housing – Bag
 Terminal - Reel
 UL Certified: Yes
 Designed In: Millimeters
 RoHS: Yes
 Glow Wire: Yes (217063, 217064, 205979)

ELECTRICAL

Voltage (max.): 250V
 Current (max.): 4.0A (2 circuit, 22 AWG)

MECHANICAL

Durability (max.): 30 cycles

PHYSICAL

Housing Color: Natural or Black
 Contact: Copper Alloy
 Plating:
 Terminal Pin — Tin-Bismuth over Nickel
 Crimp Terminal – Tin
 Wire Size: 22 to 28 AWG
 Operating Temperature: -40 to +105°C

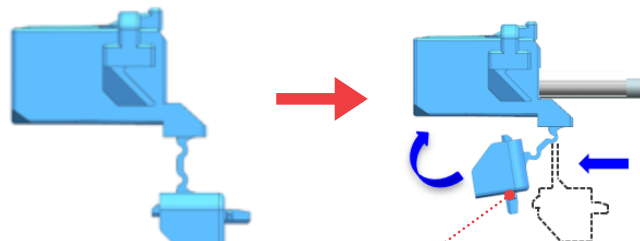
*Refer to product specifications (2059790000-PS) for other electrical specifications

RECEPTACLE ISL FUNCTION

As shipped

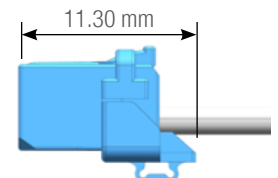


After terminal insertion



Mating by deforming the ISL part

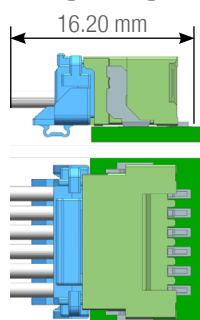
After ISL closed



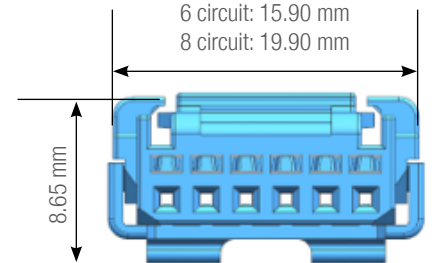
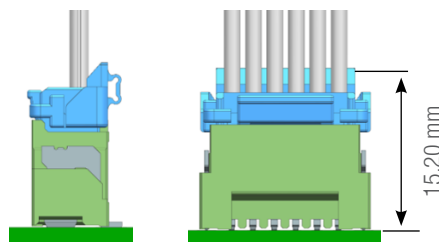
2 circuit: 7.90 mm
 6 circuit: 15.90 mm
 8 circuit: 19.90 mm

MATED VIEW

Right Angle



Vertical



Micro-One Wire-to-Board Connector with Integrated ISL



Current Derating Reference Information

AWG#	Amps (A)		
	2-Circuit	4-Circuit	8-Circuit
22	4.0	3.5	3.0
24			
26	3.5	3.0	2.5
28	3.0	2.5	2.0

Ordering Information

Series No.	Description	Potting Capability	Glow Wire	Circuits / Wire size (AWG)	Rows	Color
217063-00XY	Vertical header	Yes	Yes	2, 3, 4, 5, 6, 7, 8	Single	Black
217064-00X1	Right-angle header	No	Yes			
205971-00XY	Vertical header	No	No			
205972-00X1	Right-angle header	No	No			
205979-20X1	Receptacle housing	No	Yes			
56134-9001	Crimp terminal	-	-	22 to 24	-	-
56134-9002		-	-	26 to 28	-	-

X = Circuit
 Y=1; With cover tape
 Y=3; Without cover tape
 Y=5; Without cover tape
 Y=7; With cover tape

www.molex.com/link/micro-one.html

Molex is a registered trademark of Molex, LLC in the United States of America and may be registered in other countries; all other trademarks listed herein belong to their respective owners.