

# Off-the-Shelf Picoflex Ribbon Cable Assemblies

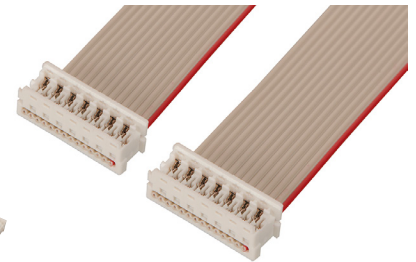
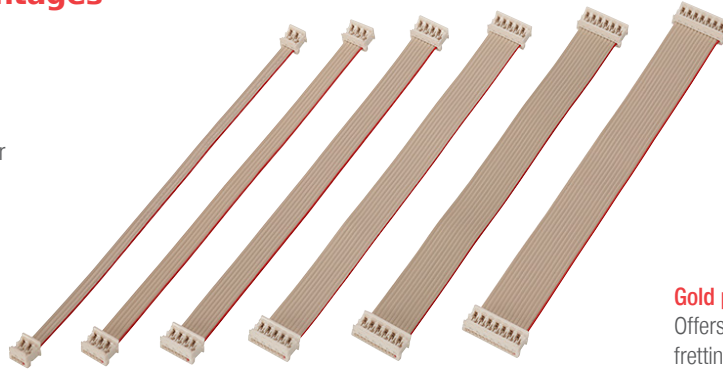
**molex**

Off-the-Shelf Picoflex Ribbon Cable Assemblies deliver a wide variety of standard lengths and circuit sizes. They are readily available and ideal for early project development

## Features and Advantages

### One-piece connector housing

Provides excellent cable retention for easy control of inventory



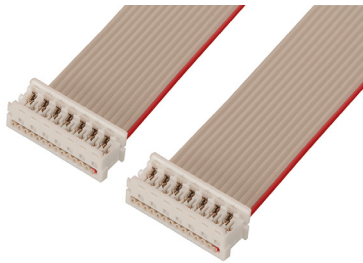
*Picoflex Cable Assemblies*

### Dual-beam contacts

Provide 4 points of contact for each circuit at the mating interface for a reliable connection.

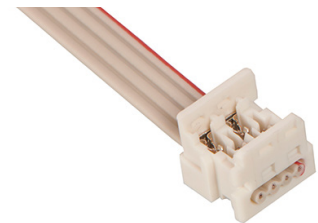
### Gold plating option

Offers higher mating cycle and eliminates fretting in high-vibration applications



### Termination windows and clearance slots

Allow for visual check after cable assembly build for enhanced quality

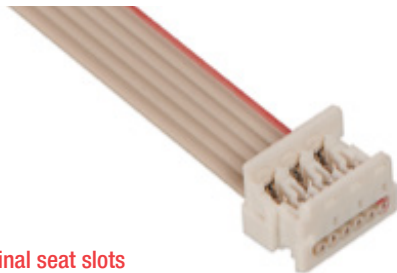


### Ejection tooling slots

Ease unmating of cable assembly from header

### Polarized connector

Avoids mis-mating between cable assembly and header



### Final seat slots

Provide locking mechanism between mated cable assembly and header



### Scalloped profile

Ensures precise positioning of the ribbon cable

### Insulation displacement Termination

Permits daisy chaining

# Off-the-Shelf Picoflex Ribbon Cable Assemblies



## Applications

### Consumer

- Satellite receivers
- Security systems
- Smart card readers
- Vending machines

### Industrial / Industrial Automation

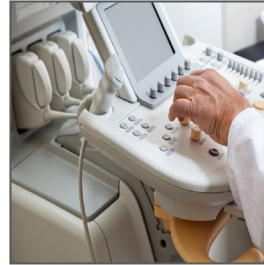
- Access controls
- Advertising displays
- Power supplies
- Security devices
- Solar
- Weighing systems

### Medical

- Blood analyzer
- Patient monitors
- Portable heart monitor
- Testers

### Sustainable Energy

- Solar converters
- Solar inverters



Patient Monitoring



Vending Machine



In-Car Entertainment

## Specifications\*\*

### REFERENCE INFORMATION

Packaging: See Product Specs  
 UL File No.: E29179  
 CSA file No: LR19980  
 Mates With: Picoflex PF50 header  
 Receptacle Used: Series 90327  
 Designed In: Millimeters  
 RoHS: Yes  
 Halogen-Free: No  
 V-0: Yes  
 Glow-Wire Compliant: No

### ELECTRICAL

Voltage (max.): 250V  
 Current (max.): 1.2A  
 Contact Resistance: 15 milliohms  
 Dielectric Withstanding Voltage: 750V AC applied to adjacent circuits for 1 min.  
 Insulation Resistance (min.): 1000 Megaohms

### MECHANICAL

Contact Insertion Force: 1.7N (max)  
 Contact Retention to Housing: 7N (min)  
 Mating Force: 5.39N (max) per ckt.  
 Unmating Force: 0.25N (min) per ckt  
 Durability (min): 30 cycle

### PHYSICAL

Pitch: 1.27 mm  
 Wire Gauge: 28 AWG  
 Housing: Polyester  
 Contact: Phosphor Bronze  
 Plating: Tin  
 Operating Temperature: -40 to +105°C

**\*\* Information is based on Picoflex connector specifications**

## Ordering Information

Series	Component	Circuits	Lengths (mm)
92315	Off-the-Shelf Picoflex Ribbon Cable Assemblies	4, 6, 8, 10, 12 and 14	80.00, 160.00, 240.00, 320.00, 500.00

Custom Product	Description
Contact Molex	Off-the-Shelf Picoflex Ribbon Cable Assemblies. Custom lengths and other options

[www.molex.com/link/otscableassemblies.html](http://www.molex.com/link/otscableassemblies.html)

Molex is a registered trademark of Molex, LLC in the United States of America and may be registered in other countries; all other trademarks listed herein belong to their respective owners.