

Off-the-Shelf Super Sabre Cable Assemblies

molex

Off-the-Shelf Super Sabre Cable Assemblies deliver a **34.0A current rating** and offer a variety of cable lengths and power connectors with proven technology for long-term performance

Features and Advantages

Current rating of 34.0A per blade and 600V

Match requirements for high-current and high-voltage applications in a low-profile design

Silver-plated, high-conductivity alloy terminals

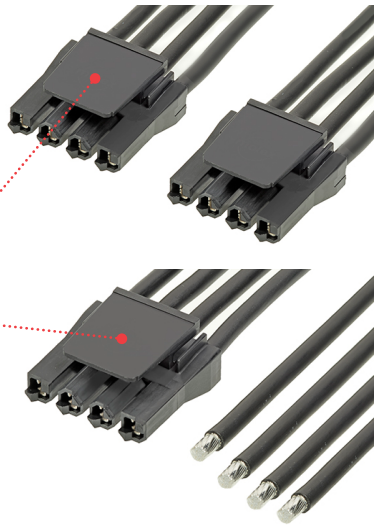
- Provide high-performance connections that eliminate fretting corrosion concerns
- Afford a lower-cost solution versus gold-plated terminals. Optimized for 10 to 12 AWG wires

Positive latch and Terminal Position Assurance (TPA) features on receptacle

Prevent terminal backout with mating plug or header in high-vibration applications

Wire-to-wire and wire-to-board configurations

Deliver design flexibility with significant space and cost savings. Compatible with lead-free wave soldering and reflow soldering processes



Super Sabre Cable Assemblies

Operating temperature up to +105°C, USCAR-2, level 3

Allows for high operating temperature uses including automotive and commercial vehicle applications

Flat-blade terminal design with four independent points of electrical contact

Offers redundant, secondary current paths for long-term performance and reliability

Fully isolated terminals on both mating sides

Provide complete protection against damage or shock

UL1977 and UL60950 "Finger Test" certified blade

Meets safety requirements for many consumer applications

Markets and Applications

Automotive

Commercial vehicles

Consumer

Air conditioners

Ovens/ranges

Refrigerators

Vacuum cleaners

Washers and dryers

Medical

Diagnostic equipment

Medical imaging

Patient monitors

Telecommunications/Networking

Base stations

Fan / blower racks

Power supplies and distribution

Servers

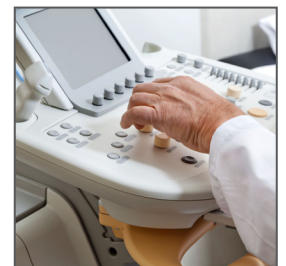
Switches



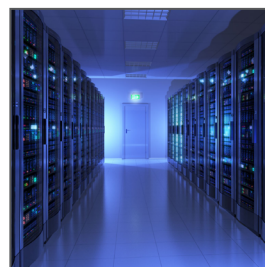
Automotive



Consumer/Home appliances



Medical



Telecommunication/Networking

Off-the-Shelf Super Sabre Cable Assemblies



Specifications

REFERENCE INFORMATION

Packaging: Bag (connectors); reels (terminals)
UL File No.: E29179
CSA File No.: LR19980
Use With: 10 AWG
Insulation Diameter: 4.30mm
Designed In: Millimeters
RoHS: Yes
Halogen-Free: No
Glow Wire Compliant: No

ELECTRICAL

Voltage (max.): 600V AC/DC
Current (max.): Up to 34.0A
Contact Resistance (max.): 2.5 milliohms
Dielectric Withstanding Voltage: 2000V AC (unmated connectors for 1 minute between adjacent terminals and between terminals to ground)
Insulation Resistance (min.): 500 Megohms

MECHANICAL

Terminal Insertion Force (max): 11N
Terminal Retention to Housing (min): 67N without TPA
Mating Force (max.): 17.8N per circuit
Unmating Force (min.): 4.4N per circuit
Durability (max.): 25 cycles

PHYSICAL

Housing: Nylon
Contact: Copper
Plating:
Contact Area – Silver
Underplating – Matte Tin
Operating Temperatures: -40 to +105°C

*Information is based on Super Sabre connector specifications

Ordering Information

	Component	Circuits	Lengths (mm)
216010	Off-the-Shelf Super Sabre Cable Assemblies	2,3 and 4	150.00, 300.00 and 600.00
216011			

Custom product	Description
Contact Molex	Off-the-Shelf Super Sabre Custom Cable Assemblies

www.molex.com/link/otscableassemblies.html

Molex is a registered trademark of Molex, LLC in the United States of America and may be registered in other countries; all other trademarks listed herein belong to their respective owners.