
The Discovery Montessori Inc.



Parent's Handbook

6553 Ninth Line
Mississauga, Ontario. L5N 7B9

905-824-9246

www.discoverymontessori.ca

email: info@discoverymontessori.ca

| TABLE OF CONTENTS | Page |
|--|-------------|
| 1. WELCOME TO THE DISCOVERY MONTESSORI. | 3 |
| 2. MISSION STATEMENT | 3 |
| 3. PROGRAM PHILOSOPHY | 3 |
| 4. PROGRAM STATEMENT | 4 |
| 5. SCHOOL HISTORY | 12 |
| 6. THE MONTESSORI CURRICULUM | 12 |
| 7. PROGRAMS OFFERED | 12 |
| 8. DAYS AND HOURS OF OPERATION | 13 |
| 9. DAILY PROGRAM SCHEDULE | 13 |
| 10. ARRIVAL / PICK UP AND PARKING | 14 |
| 11. LUNCH / SNACKS AND NUTRITION | 15 |
| 12. HEALTH AND ADMINISTRATION OF DRUGS | 15 |
| 13. CLOTHING | 16 |
| 14. PARENTAL INVOLVEMENT | 16 |
| 15. FIELD TRIPS | 16 |
| 16. HOLIDAYS AND SICK LEAVE | 16 |
| 17. WAIT LIST, ADMISSION AND DISCHARGE POLICY | 17 |
| 18. SCHOOL PRIVACY POLICY | 17 |
| 19. SCHOOL FEES | 18 |
| 20. WITHDRAWAL AND FEE REFUND POLICY | 18 |
| 21. CHILD MANAGEMENT – PROHIBITED PRACTICES | 19 |
| 22. CHILD MANAGEMENT – SUPERVISION | 19 |
| 23. EMERGENCY MANAGEMENT PROCEDURES – PARENT'S NOTIFICATION | 19 |
| 24. PARENTS GRIEVANCE RESOLUTION PROCEDURE | 19 |
| 25. FIRST DAY ITEMS | 20 |
| 26. SCHOOL LOCATION MAP | 21 |

1.0 WELCOME TO THE DISCOVERY MONTESSORI

Welcome to The Discovery Montessori. We look forward to working with you.

Please take time to read this handbook as it has been prepared to help you understand about our school policies and procedures. It should be kept as a reference.

We are also proud to state that we are among the few select schools of Ontario that are accredited by the **Canadian Council of Montessori Administrators (CCMA)**, which is an endorsement of its meeting the quality standards, environment and the best practices of an authentic and outstanding Montessori school.

Our school is also a proud member of the Region of Peel **"Raising the Bar"** – Childcare Quality Initiative. This program is geared towards enhancing the quality of early learning and childcare in the Region of Peel.

We believe that the best education for children occurs through the cooperative efforts of the home and school. Should you have any questions, please do not hesitate to call.

2.0 MISSION STATEMENT

The school's aim is to provide an environment where children can discover and attain their full academic, social and physical potential. With the help of our Montessori trained staff, we offer a sensible, structured and well-tested system that allows children to develop at their own pace using their own abilities under the guidance of trained Montessori teachers and material.

3.0 PROGRAM PHILOSOPHY –

"Every child is a discoverer; we teachers can only help the work going on" Maria Montessori



Our educational institution is laid out and governed by the International Montessori Association guidelines; guidelines that we have put into place precisely as Maria Montessori intended. We take pride in the quality of our educational program, well-equipped classrooms and caring atmosphere. Our program philosophy is designed to evoke the sense of wonder and discovery in our children and we echo Maria Montessori's philosophy that the goal of early childhood education should not be to fill a child with facts from a set course, but rather to cultivate his/her own natural desire to learn.

Parents can entrust us with their children with confidence, knowing that they will always be treated with love, kindness and respect. We try to address the needs of each child and of the total family. Our staff strives to be fair and flexible, always willing to work with parents. Above all we believe that school should provide a positive learning experience that prepares your child for the life beyond the primary classroom.

4.0 PROGRAM STATEMENT

The school program statement is based upon our goal of maintaining a high quality childcare environment and takes guidance from the Ontario's Pedagogy for Early Years 2014 "How Does Learning Happen?". A copy of the program statement will be provided to all the parents at the time enrollment of their children.

THE DISCOVERY MONTESSORI PROGRAM STATEMENT

INTRODUCTION

In accordance with Ontario Regulation 137/15 to the *Child Care and Early Years Act* (the "Regulation"), this document is **The Discovery Montessori's** Program Statement. This Program Statement is intended to provide an overview of The Discovery Montessori's procedures and practices, which are in place to ensure that the child care and early years programming that is provided by the staff is of the highest quality and supports, in all facets of the program, the foundational skills that are necessary for children to achieve their fullest potential in early childhood education and beyond. This program statement also takes guidance from the Ontario's Pedagogy for Early Years 2014 "How Does Learning Happen?"

All existing and new staff, students and volunteers shall review and retain this Program Statement prior to interacting with children, and shall promptly be informed of any modifications or amendments to this Program Statement, and any resultant procedural changes to The Discovery Montessori's program.

The Program Statement is divided into sections, with corresponding sections from the Regulation provided for ease of reference.

Encouraging Children's Exploration, Experiential Learning and Positive Learning Experiences

A. Encourage the children to interact and communicate in a positive way and support their ability to self-regulate; Foster the children's exploration, play and inquiry

The Discovery Montessori School provides an environment of positive learning and mutual interaction both inside the classrooms as well as outdoors. The core principle of our program philosophy is the belief that all children are competent and intelligent human beings, who are inquisitive and capable of learning through their own individual interactions and experiences. The Montessori material is self-correcting and it helps the children to regulate their own ability to learn thorough their own understandings. The teachers are supportive of their positive energy as a role model and their knowledge of their belief that the children learn and develop through their own play, exploration and inquiry. The vast range of Montessori material, through practical life to culture, allows the child to engage in self-expression. Once the activity is presented by a teacher the child has the independence and freedom to choose and work with the material for as long as the child has the desire and need to explore it.

| What Goals do we seek? | How will we achieve this goal? | Success measure | By when? |
|---|---|-------------------------------|--|
| A review of all the school play and learning material to be held every year for upgrade and /or | - Review all classrooms for the suitability, replacement or upgrade of existing | Material and equipment review | First Review 30/06/2017 2nd Review 30/06/2018 3rd Review 30/06/2019 4th Review 30/06/2020 |

| | | | |
|--|---|--------------------------------------|---|
| replacement with new material to ensure new equipment is available for the children to foster enhanced inquiry and learning experiences. | equipment to ensure continuous and enhanced learning for children. - | completed for all school classrooms. | 5 th Review to be done on 30/06/2021 |
|--|---|--------------------------------------|---|

(Section 46(3)I-(d)]

B. Provide child-initiated and adult-supported experiences; and plan for and create positive learning environments and experiences in which each child’s learning and development will be supported

The classroom environment is prepared every day to be ready for the next day. The environment is conducive in providing opportunities for a child to initiate his/her own activities according to his/her own readiness. The teachers are supportive of these experiences and further encourage the child to be more independent and explore. The classroom experiences are further enriched by exploring the world of nature. E.g. the Montessori color tablets and the geometric cabinets can lead to the outdoor study of colours and signs of nature all around us.

Each child has an observation log that is maintained on a daily and weekly basis. The observations further assist the teacher to maintain a positive environment of challenges that would help the child to develop socially and academically. Each child is seen as an individual with his or her own specific needs and readiness. This allows and creates an all-inclusive and creative environment for children and help them to learn and explore at their own pace.

| What Goals do we seek? | How will we achieve this goal? | Success measure | By when? |
|---|--|--|---|
| Encourage all children to initiate his/her own activities in the class room according to his /her own readiness . | Each child has an observation log that is maintained on a daily and weekly basis. The observations further assist the teacher to maintain a positive environment of challenges that would help the child to develop socially and academically. | A formal log of the progress of the children is maintained to monitor and assist each child to initiate his/her own activities according to his/her own readiness. | Completed June 30, 2017 2021 Ongoing |

[Section 46(3)I-(f)]

Health, Safety, Nutrition and Well-Being

The school is dedicated to promoting and implementing robust health and safety practices. The school environment is kept meticulously clean and the staff maintain daily cleaning logs of all “critical areas”. Critical areas are identified to the staff as areas that have a direct bearing on the health and well-being of the children e.g. kitchen/ eating area, washrooms etc. The health and safety of each child is monitored at all times. Staff are trained on CPR and First Aid training and maintain regular communication with parents as to the health, safety, nutrition and well-being of the children.

All parents are informed, before the enrollment of their children, about the school policies regarding sickness, special requirements and notifications regarding dietary restrictions, sleep, exercise/activities, and administration of medication, allergies and other details that are essential to the children's health. The health related requirements of each child are communicated to the staff and appropriately recorded and/or implemented, as necessary, by the school prior to children's participation in the school program.

All snacks and lunches are prepared from the basic ingredients on the premises at the school. These meals are prepared according to Health Canada food guide by a qualified staff with food handlers training and certification. The school provides mostly organic and whole wheat products. Any special dietary requirement of children (allergies etc.) are noted and carefully monitored and maintained.

A written log is maintained in the school eating area, which specifies all the special dietary requirement of .

children. All children are encouraged to help themselves during lunch and snack time. The pouring skill in practical life area in the classroom is further enhanced when children pour their own milk or water in their cups to drink.

All the fire alarms and other safety equipment are monitored and checked as per schedule by qualified and authorised personnel. Fire drills are carried out monthly and a log of these drills is maintained.

| What Goals do we seek? | How will we achieve this goal? | Success measure | By when? |
|--|---|--|--|
| Ensure open dialogue between staff and parents regarding health related requirements or restrictions for children; | Discuss and review health related requirements or restrictions for children during parent teacher meetings as a standard agenda item. | Minimum twice a year parent teacher meeting are held to discuss health related requirements or restrictions. Action items from these meetings are implemented. | Completed June 2017 2021 Ongoing |
| All staff members to attend professional development workshops related to first aid, CPR and food handlers training. | Enroll each Staff member in Training for min 8 hrs in 2016. Training subjects to include first aid, CPR and food handlers training. | All staff members training for min 8 hrs completed in 2016-2017 school term. | Completed June 2017 Ongoing 2021 |
| For children's health needs, such as anaphylaxis and asthma, Individual response plans must be kept up to | Review all children's enrolment forms and ensure their individual special health response and management | All individual action plans and special dietary requirements are up to date and | Completed June 2017 Ongoing 2021 |

| | | | |
|---|---|---|---|
| date at the school and the notice boards | plans are available and up to date. | posted in the kitchen and the classrooms. | |
| Ongoing monitoring and maintenance of school premises (alarms, sensors, etc.) to ensure institutional-level safety and protection. | Conduct annual inspection of Fire and Safety systems by a certified fire and safety inspector Conduct monthly Fire drill | Annual Maintenance inspection of Fire & safety systems completed Monthly Fire drills are conducted and log maintained. | Completed June 2017 Ongoing 2021 |
| Encouragement of children to ‘help themselves’ in the process of eating food, as a means of promoting self-discipline and independence. | During Lunch and snack time the teachers will encourage the children to help themselves from the prepared plate. | Monitor and encourage children who still resist helping themselves to the prepared meal. | Completed June 2017 Ongoing 2021 |

[Section 46(3)(a)]

Encouraging Positive Engagement among Children, Parents, Staff and Community Partners

A. Support of positive and responsive interactions among children, parents, child care provider and staff:

The school believes in maintaining a healthy relationship with the families and partners of the community. Communicating together involves two ways of sharing information and helps to build a common understanding. Our staff and parents are encouraged to maintain an open and receptive dialogue regarding the Montessori program, and we strive to ensure that both staff and parents are able to speak with one another on a frequent basis regarding each child’s progress and development. Further, when staff are notified by parents about any particular concerns or inquiries, they strive to act as promptly as possible to achieve a beneficial resolution of the matter, and keep parents informed throughout the process.

| What Goals do we seek? | How will we achieve this goal? | Success measure | By when? |
|--|--|--|---|
| Ensure that parents are encouraged to approach staff with any questions or concerns they may have regarding the Montessori program at any time | A log will be maintained for any issues or concerns that the parents may have regarding the school program and resolution of the issues will be tracked on this log. | Initiate the log book and note all minor or major concerns on this log | Completed June 2017 Ongoing 2021 |

[Section 46(3)(b)]

B. Foster the engagement of and ongoing communication with parents about the program and their children

The school promotes an honest and respectful relationship with the families. The open dialog with parents allow the teachers to understand what is happening at home and how this may affect the child at school. The parents also have the choice to call or e-mail the school to find about what is happening during their child's day at school and how they are progressing. There is an information night at the school to introduce the parents about the Montessori curriculum and answer any questions. Parent-Teacher meetings are scheduled twice a school year. Additional meetings can be arranged anytime in between to address any concerns as they arise.

| What Goals do we seek? | How will we achieve this goal? | Success measure | By when? |
|--|--|---|---|
| Regular scheduled parent-teacher meeting are held twice a year to review children's performance in the class, agree on performance expectations/goals for each child and address any concerns that the parents may have. | Arrange twice a year meetings with parents and staff members | Meeting with parents and teachers are held twice a year. Performance expectations and goals for each child are discussed. Any issues or concerns raised by the parents are logged for resolution. | Completed June 2017 Ongoing 2021 |

[Section 46(3)(h)]

C. Involve local community partners and allow those partners to support the children, their families and staff

School concerts, observation week and field trips are effective platforms to build parent –teacher relationships. Families feel more involved with their child's experience at the Montessori school. The school is also actively involved with the regional government to benefit from their available programs and support services and is currently a partner with the PIRS program to provide support and all the available services to children with special needs. The school has also recently signed the agreement the Region of Peel to allow families with fee subsidy agreements to enroll their children at the school.

We develop positive relationships with neighboring schools to promote seamless, effective transitions for children and families as they begin their JK programs at other schools.

| What Goals do we seek? | How will we achieve this goal? | Success measure | By when? |
|--|---|---|---|
| Strong collaborative relationships continue to be fostered with all community partners, CDRCP, PIRS and Operators Networking groups. | Meet regularly with partnership leaders Work collaboratively with partnership groups/organizations to establish networks | Collaborative practices continue to be developed across the partnership Networks – by attending meetings an participation in orientation sessions with CCMA, CDRCP, Region of Peel, Operators Networks etc. | Completed June 2017 Ongoing 2021 |
| Maintain on-going communications with neighboring schools to promote seamless, effective | Ensure that any requests for information for former school students from their new schools are adequately | All queries from external schools regarding former students answered within three business days | Completed June 2017 |

| | | | |
|--|--|--|--------------|
| transitions for children and families as they begin their JK programs at other schools | and promptly addressed as per school policy. | | Ongoing 2021 |
|--|--|--|--------------|

[Section 46(3)(i)]

C. Incorporate indoor and outdoor play, as well as active play, rest and quiet time, into the day, and give consideration to the individual needs of the children receiving care.

Discovery Montessori allows the rest, quiet time and the playtime to have the same level of positive energy. The naptime provides the rest the children need after a busy productive day. It helps them to rejuvenate for the afternoon session. The outdoor playtime is an excellent opportunity to play games and master emerging physical skills. The children can fully and freely exercise their motor skills like running and jumping. Outdoor playtime in Discovery Montessori promotes cognitive and social / emotional development in children. The teachers encourage them to invent their own games and allow them to make their own decisions by taking control of their own movements.

The outdoor playtime is also an opportunity to promote the understanding of why rules are important. It fosters communication skills as children invent/modify rules. The games children play in the school help them to relate the numbers as they count (Mr. Wolf). Discovery Montessori understands and promotes the social custom of playing together and cooperation during play time.

Although the sensorial material in the classroom is a great source of connection to the world outside. A nature walk in the school backyard further enriches their experiences of aesthetics. They learn through their senses. The sound of the birds, the squirrels and rabbits running around, the leaves changing color, are all experiences that are enriching and profound.

| What Goals do we seek? | How will we achieve this goal? | Success measure | By when? |
|--|--|--|---|
| All staff members to attend professional development workshops related to reporting abuse and children with special needs. | <ul style="list-style-type: none"> - Enroll staff members in training related to children with "special need" topics as well as Duty to report requirements. - 2018 Teachers will attend workshops related to Montessori areas of curriculum and relate it to "How Does Learning Happen". | All staff members training for special needs and reporting abuse completed in 2016-2017 school term. | <p>Completed June 2017</p> <p>Ongoing 2021</p> |
| Provide improved access to all areas of the outdoor environment for children by expanding the existing play area. | Subject to availability of funds from Region of Peel, enlarge the size of the play area by removing the inner fenced structure and creating a more open and wider space for children to | School play area expanded by removing the inner fenced structure. | Subject to Approval by Program Advisor During revised licencing |

| | | | |
|--|--|--|-------------------|
| | explore and enjoy the natural environment, - | | Completed in 2020 |
| Promote more healthy eating habits by enhancing the proportion of organic and whole wheat products including fruits and vegetables as well as dairy products in the school menu. | - Increase the organic and whole wheat proportion from the current 65 % to 85% | 2017 : 80 % of the food items in the school menu are organic and whole wheat. 2018 : 85 % | June 30 2021. |

[Section 46(3)(g)]

5. Ongoing Professional Development of the Staff

The school employs qualified early childhood staff to maintain the highest quality of excellence in childcare. Training and continuous skills enhancement of the staff is an essential requirement to be maintained for the staff at Discovery Montessori. Through on-going staff training and continuously exploring and reviewing available workshops, the school management is striving to evolve and enrich the school environment with new ideas and materials. A majority of our staff members have the requisite and up-to-date CPR and level C First Aid training and the rest of the staff members are enrolled in courses to complete this requirement within the next six months. This will greatly help the teachers to feel confident in handling any classroom crisis.

The teachers are also required to attend the “Duty to Report” workshop so as to better recognise and report any child abuse or neglect and endangerment case.

Training has been very beneficial to The Discovery Montessori as the teachers bring new ideas , trends and discipline to the school, The staff feels very motivated and engaged and are happy to bring new energy to the class rooms.

The school holds regular monthly staff meetings to share experiences, discuss issues and concerns and provide suggestions for improvement.

| What Goals do we seek? | How will we achieve this goal? | Success measure | By when? |
|---|---|--|---|
| All staff members to attend at least eight hours of professional development workshops during the school year. Each workshop has to be not less than two hours. Teachers will also attend workshop related to children with “special need” topics as well as Duty to report requirements. | - Enroll each Staff Training for min 8 hrs in 2016. - Training subjects to include “special need” topics as well as Duty to report requirements. - 2018 Teachers will attend workshops related to Montessori areas of curriculum and relate it to “ How Does Learning Happen”. | All staff members training for min 8 hrs completed in 2016-2017 school term. | Completed June 2017 Ongoing 2021 |

| | | | |
|--|---|---|---|
| A folder is developed to review available new literature and record learning from professional development sessions that can be shared amongst staff members. [Section 46(3)(j)] | Establish folder All staff to contribute to contents (as well as sharing learning through discussions at staff meetings) | Folder is used by all staff to share learning from professional development opportunities | Completed June 2017 Ongoing 2021 |
|--|---|---|---|

Program Statement Implementation Policy

1. The Discovery Montessori is committed to supporting children to grow to their fullest potential in a safe, caring and nurturing environment. The program statement describes Discovery Montessori's specific goals for children's learning and development, and the approaches that will be implemented.
2. All staff, students and volunteers will carefully read the Discovery Montessori Program Statement and sign off in the Policy and Procedures Sign off sheet prior to employment or prior to interacting with children, and when the statement has been modified, and on an annual basis.
3. The school supervisor will review all sign offs by staff, students and volunteers and sign the review sheet to indicate that the review process has been completed. The School supervisor must be confident that the staff, volunteer or student is fully aware, and understands the Program statement and its implementation timeline.
4. The school supervisor will meet on a regular basis with each staff member to establish a clear understanding of the program statement, to support staff in their delivery of the Program Statement and to aid the staff in self-reflection, to be recorded, and added to the sign off sheet on a regular basis.
5. The school supervisor will discuss curriculum, Ministry of Education licensing, and quality assessments, and parent feedback results with the school staff during staff meetings.
6. The school supervisor will provide staff with opportunities to attend all mandatory and supplemental training. Track all training completed by each staff.
7. The school supervisor will monitor all staff, students and volunteers for compliance with the approaches set out in the program statement and the commission of any prohibited practices through a combination of observation; reports from colleagues, parents, and community partners; and program plans and documentation.

5.0 SCHOOL HISTORY

Since the year 2000, The Discovery Montessori School has provided unparalleled educational, academic, and social experiences for the children when it started its first campus at the Erindale location on Dundas Street in Mississauga. Expanding and developing over the years, The Discovery Montessori School has become a model Montessori institution for children from infancy through pre-school age. The tradition of excellence established at the Discovery Montessori School continues to provide a warm, caring and exciting environment. We employ the best Montessori teachers and offer an established, comprehensive, and creative curriculum. The faculty at The Discovery Montessori School takes great pride in the achievements of both current students and alumni. We are proud to state that the Discovery Montessori is among the most highly recommended and preferred Montessori schools in the Peel & Halton regions.

6.0 THE MONTESSORI CURRICULUM

The Montessori classroom is divided into several areas including, language arts, sensorial exercises, cultural activities, practical life and Mathematics. Classrooms will include a classroom library. Each area is made up of one or more shelf units and display cabinets with a wide variety of materials on open display ready for use as children select them. Each classroom is directed by a qualified teacher who has the necessary skills, experience and qualifications for the program.

Practical Life. These exercises include self care, care of the environment, grace and courtesy. While doing these exercises the child develops concentration, independence and control over his motor skills.

Sensorial. These activities, done first through matching and later through grading, increase the child's ability to discriminate sensorial impressions.

Language Skills. Children are introduced to the phonics. Through phonic exercises and games, reading becomes effortless and pleasurable.

Mathematics. Montessori students explore the quantities, symbols, sequence and operations of basic facts by using concrete materials. This hands-on experience helps them to understand the mathematical concepts.

Culture. Through Montessori materials children are able to explore the areas of biology, geography, history, and science.

Besides these **five** main areas of instruction, The Discovery Montessori also offers French language, music program, arts and crafts, and physical education for the children.

7.0 PROGRAMS OFFERED

Toddlers: 18 months – 2.5 years of age – 5 Full days

Pre-School: 2.5 years to 5 years – 5 Half days or 5 Full days



8.0 DAYS AND HOURS OF OPERATION

The following timings are observed for the programs, which are held for FIVE days in a week from Monday to Friday for both the TODDLERS and the PRE-SCHOOL CHILDREN.



| PROGRAM | START TIME | END TIME |
|-----------------------|------------|----------|
| Before School Program | 7:30 am | 8:45 am |
| Morning Program | 8:45 am | 11:45 am |
| Afternoon Program | 12:30 pm | 3:30 pm |
| Full Day Program | 8:45 am | 3:30 pm |
| After School Program | 3:30 pm | 5:00 pm |

9.0 DAILY PROGRAM SCHEDULE - TODDLER

| TIMINGS | ACTIVITY |
|---------------------|--|
| 7:15 - 7:30 am | Arrival of School Staff |
| 7:30 – 8:45 am | Before School Care /Snack |
| 8:45 am | Arrival of Students |
| 8:45 – 10:00 am | Playtime Activities |
| 10:00 - 10:30 am | Diaper change routine/Morning snack. |
| 10:30 – 11:30 am | Outdoor play time |
| 11:45 am – 12:30 pm | LUNCH BREAK & WASHROOM ROUTINE |
| 12:30 – 2:30 pm | Naptime / Quite time for full day kids |
| 2:30 – 3:00 pm | Diaper change routine/Afternoon snack |
| 3:00 – 4:00 pm | Playtime Activities |
| 3:30 pm | Dismissal of Students. |
| 4:00 – 5:00 pm | Outdoor play time |

DAILY PROGRAM SCHEDULE - CASA

A DAY IN CASA CLASSES AT THE DISCOVERY MONTESSORI

| | |
|---------------------------|----------------------------|
| Arrival/Breakfast. | 7:30 am |
| Outdoor playtime. | 8:00 am to 9:00 am |
| Work cycle. | 9:00 am to 11:45 am |

Work cycle includes:

Practical Life activities. Exercises in taking care of the environment and care of self. It also promotes grace and courtesy and independence.

Sensorial. Exploring the five senses through material.

Language. Circle time, storytelling, sound games, vocabulary building through classified cards, phonetic exercises for word building and reading.

Math. Exploration of numbers. Using concrete material to understand the basic concept of math.

Culture. Activities to expand the knowledge of the world around.

Art/Music. Singing, dancing, playing simple instruments, drawing, painting, cutting, gluing. To enhance the artistic self and explore the imaginative and creative mind.

Snack. Health and nutritious snack . Self-serve.

| | |
|---------------------------------------|-----------------------------|
| Dismissal of half day students | 11:45 am. |
| Lunch. | 11:45 am to 12:30 pm |
| Nap routine. | 12:30 pm to 1:30 pm. |
| Quiet time and Group lessons. | 12:30 pm to 3:00 pm |
| Outdoor playtime | 3:00 pm to 5:00 pm |
| School closes at | 5:00 pm |

10 ARRIVAL, PICK UP AND PARKING



The Discovery Montessori strives to be a respected and responsible member of the residential community on the 9th Line area. Please respect the sanctity of the surrounding by approaching and leaving the school slowly and safely.

- **Morning:** The school begins at 8:45 am. Children should be brought to the school at 8:45 am and should be picked up at 11:45 am.
- **Afternoon;** The school begins at 12:30 p.m. Children should be brought to the school at 12:30 pm, and should be picked up latest at 3:30 pm.

Parents should understand that late arrivals can be disruptive for the rest of the class and can be potentially embarrassing for the child.

Parents are responsible for escorting their child as well as carpool children to the classrooms making sure that a teaching staff is aware of the child's presence. Children must never be allowed to walk into or out of the school building by themselves.

NO CHILD WILL BE ALLOWED TO LEAVE THE SCHOOL WITH SOMEONE OTHER THAN A PARENT OR A PERSON AUTHORIZED BY A PARENT. However in case of special circumstances, if there is a change in the pick up arrangement the parent should inform the school staff preferably in person or by telephone explaining the reason for the change in pick up arrangement.

If a parent has been granted sole custody by a court order, in which case only the custodial parent may be allowed to pick up the child. Parents should provide to the school, a copy of the court order which prohibits or limits one parent's access to the child.

If a non custodial person attempts to forcibly pick up a child from the school, the school has the right to call the police and the CAS for appropriate action.

LATE PICK UP

Parents are responsible and accountable for dropping and picking up their children in time as the regular Montessori program officially ends at 11:45am and 3:30pm respectively. There will be a charge of \$15.00 for every 15 minutes or portion thereof for children who are dropped off earlier than their appointed time and for children not picked up by their appointed pickup time. Please call the school office at **905-824-9246** in case of an emergency.

PARKING AREA

Due to the limited number of parking spaces please leave the school premises after dropping off your child. Please do not park in a no-parking zone, a fire lane, in front of the fire hydrant or in front of access to the school building.

11. LUNCH SNACK AND NUTRITION

The Discovery Montessori provides a healthy nutritious morning snack, lunch and an afternoon snack for children attending full day (8:45 am – 3:30pm). The school also provides a healthy and nutritious snack for children attending half day programs (8:45 am– 11:45 am or 12:30 pm – 3:30 pm). The lunch and snack menu is prepared from mostly whole grain and organic dairy products, fruits and vegetables and consists of a variety of foods from each of the food groups including milk and/or water. Our school menu has been approved by a registered dietician and nutritionist and meets or exceeds Health Canada Food Guide serving requirements for grains, fruit, vegetables and dairy. A menu will be provided to each family and will also be posted within the school for easy reference.



11.1 ALLERGIES

The school has been declared as a **NUT FREE ZONE**. Every effort is made to ensure that nut products do not enter the school as we have children in attendance who are severely allergic to nuts. As per the school policy, we are unable to distribute birthday snacks or food treats that are brought in to the school by students. If you wish to celebrate a special occasion (e.g. Halloween, Valentine's Day, Birthday, Easter) please **do not bring any edible items**. Parents may however share stationary items (pencils, erasers, stickers, etc.) if they wish to do so. A list of all the children with known allergies to specific items will be posted in the class rooms and kitchen for teacher's information.

12. HEALTH AND ADMINISTRATION OF DRUGS

No medication, prescription or non-prescription, will be administered to a child without specific written permission from the parent and the physician. All parents must fill in the Parents Authorization for Administration of Medication form (available from the school office) if they wish their child to be administered any medication while on school premises. The prescription must be specific for the child in care and in the original bottle or container with the written order of the physician not more than six months old. Parents should not put medication of any kind in the child lunch box.



The physician's instructions for dosage must be followed exactly as prescribed on the label of the medication. All medications will be kept in a locked cabinet which is properly stored out of the reach of children. All unused

medications will be returned to the parent or disposed of in a way that is completely safe and out of the reach of children at any time. The school will keep a record of all medications administered to children.

This medication log form will be placed into the child's file. All medications will be administered by the school Directress or her designate.

Topical medications such as lotions, petroleum jelly, sunscreens and skin rash creams also require written permission, which is valid for one year.

13. CLOTHING



The school encourages the parents to send their children dressed in comfortable clothing suitable for sitting on the floor. Clothes should be washable and easy for the child to manage. Practical clothes that the child can manage on their own build a sense of self-confidence and independence. Parents should remember that since many of the children have newly acquired toileting skills, belts and buckles are an unnecessary impediment to a quick trip to the bathroom. Pants with elastic bands are much preferred. Children will play outside if the weather permits. Please be sure to dress your child with the assumption that they will play outside.

CHANGE OF CLOTHING.

Children in the Casa (Primary) room are expected to be toilet trained, but occasional accidents do happen. For that reason, each child must have a complete change of clothing at school. If a child wets or soils himself/herself, a staff member will assist the child in changing his/her clothes. Wet or soiled clothes are sent home in a plastic bag.

14. PARENTAL INVOLVEMENT

The Discovery Montessori welcomes parent's input concerning the programs and policies of the school. Since the school is a community established to promote the education and development of the children, it expects and requires that parents take part in the life of the school on several distinct different levels. Parents are expected to be available to communicate with the class teacher or Directress to share in their child's progress and needs. On occasion parents are encouraged to provide supervision for field trips. Parents are also encouraged to share their talents, hobbies or careers by making a classroom presentation.



15. FIELD TRIPS

The Discovery Montessori children may occasionally go on field trips, such as to city library, parks or fruit farms. Parent organizers and chaperons are often needed. This is a useful opportunity for parents to share their child's school experience.



All field trips will be announced in advance and all children must have a signed permission slip from the parents to participate in the field trip. Please note that there will be an extra charge for these field trips.

16. HOLIDAYS AND SICK LEAVE

The Discovery Montessori will observe the following holidays during the year.

- | | |
|-----------------|--------------------|
| • New Years Day | • Summer Holidays |
| • Family Day | • Thanksgiving Day |
| • March Break | • Winter Break |
| • Good Friday | • Staff PD day* |
| • Easter Monday | |
| • Victoria Day | |

*Announced prior to the date.



16.1 SICK LEAVE

Parents must bear the main responsibility by not bringing their child to school when the child is ill or just not feeling well (which can be the most contagious time for an illness). A child must be symptom free for 24 hours before returning to school.

If a child will not be attending school because s/he is ill, the parent must notify the office.

Children attending The Discovery Montessori after an illness are expected to follow the group schedule and be well enough to participate in all activities. The child's physician should fill the required form verifying his/her fitness to attend the class.

Parents should not send a child to the school on days when any of the following symptoms are present:

- fever - rash - cough - pink eye - profuse discharge of mucus from nose or eyes - diarrhea - vomiting - sore throat

16.2 SCHOOL CLOSING DUE TO INCLEMENT WEATHER/EMERGENCIES

The Discovery Montessori will be closed for the day whenever the Peel board of education decides to close the schools due to inclement weather condition or any other emergency. Parents may monitor these closing by listening to the local radio station and by watching the local TV.



17. WAIT LIST, ADMISSION AND DISCHARGE POLICY

17.1 WAITING LIST POLICY: The school does not maintain any waiting list and all admission applicants are entertained on a first come first served basis. If there are no vacant spots available, all prospective admission applicant parents are requested to contact the school at a later date.

17.2 ADMISSION POLICY: An interview will be arranged to familiarize you and your child with the surroundings, answer questions, and complete admission forms prior to enrollment. Enrollment must include one month's payment of tuition fee deposit via cheque dated on the day of enrollment. This fee will be applied towards the last month of the school year or last month of enrollment. This deposit is non-refundable, should you wish to withdraw your child before June or last month of enrollment. A one-time non-refundable registration fee of \$ 150.00 is also required and must be paid at the time of registration. All paid tuition and other fees are non-refundable. Please note that the Region of Peel provides fee subsidy to eligible families.

17.3 DISCHARGE POLICY: Written one month notice of permanent withdrawal prior to the end of the school year must be given before the first of the month. Full monthly tuition fees are owing if written notice is provided on or after the first of the month. No credit will be given for illness, vacations, personal leave of absence, emergency or weather related school closures or designated school holidays as well as winter and spring breaks. A permanent place cannot be guaranteed if you wish to temporarily withdraw your child for personal leave of absence or any other reason.

17.4. ENROLLMENT TERMINATION POLICY.

Because the school provides child care and education in a group setting, the welfare and safety of all the children as well as the staff is our concern. If a child, despite the best of the efforts of the school staff, is unable to adjust to our Montessori program, is disruptive and /or is consistently insubordinate, and has a serious behavior problem, the directress will contact the parents to take specific steps at home to achieve behavior improvement within a specific time. However, should repeated issues, which may include parent's attitude, occur, the school reserves the right to terminate the enrollment of a child if it is deemed necessary in the best interest of the child and the school's operating environment.

If a parent/family member, for any reason, does not comply with our school procedures, is discourteous to the staff of the Discovery Montessori or is considered chronically disruptive to the school operations, the child's enrollment will be terminated.

Under most circumstances, families and children shall be given two weeks written notice in order to prepare for the dismissal. The school will refund the portion of the tuition fee, if any, after deducting the daily rate amount for each day the child was enrolled

18. SCHOOL PRIVACY POLICY

Safeguarding personal information of students and the teaching staff is a fundamental concern of The Discovery Montessori. The school is committed to meeting or exceeding the privacy standards established by the Personal Information Protection and Electronic Documents Act. The School Privacy Policy clearly describes how the school

collects, utilizes and maintains the personal information of its students and staff. All concerned parents can review the school privacy policy by contacting the school Directress.

19. SCHOOL FEES - EFFECTIVE 01 SEPT, 2019 to AUGUST 31, 2021 MONTHLY FEES SCHEDULE - TODDLER & CASA PROGRAM

| HALF DAY PROGRAM | | Sept 2019 - Aug 2021 | |
|---|--------------------|----------------------|---|
| Morning | 8:45 am – 11:45 am | \$ 800.00 | Includes morning snack |
| Morning | 8:45 am – 12:30 pm | \$ 920.00 | Includes morning snack & lunch |
| Afternoon | 12:30 pm – 3:30 pm | \$ 800.00 | Includes afternoon snack |
| FULL DAY PROGRAM | | | |
| Full Day | 8:45 am – 3:30 pm | \$1350.00 | Includes 2 snacks and lunch |
| Full Day (Toddler Program) | 8:45 am – 3:30 pm | \$1400.00 | Includes 2 snacks and lunch |
| BEFORE & AFTER CARE | | | |
| Before School | 7:30 am – 8:45 am | \$ 100.00 | Includes early morning snack prior to 8:45 am |
| After School | 3:30 pm – 5:00 pm | \$ 100.00 | Includes evening snack at 4:30 pm |
| <ul style="list-style-type: none"> • There is a \$ 150.00 one-time non - refundable Registration Fee with the application form. • A 10% tuition fee discount is available for second sibling. | | | |

- The above fee schedule would be revised for 01 September 2021 to August 31, 2023. Please visit our Admission info section on our website www.discoverymontessori.ca for the revised fee schedule.
- Tuition fee is the only source of the school's entire operating budget and must be paid promptly in order for the school to meet its financial obligations and to ensure the quality of your child's education.
- Enrollment must include one month's payment of tuition fee deposit via cheque dated for the day of enrollment. This fee will be applied towards the last month of the school year or last month of enrollment. However, this deposit is non-refundable, should you wish to withdraw your child before June or last month of enrollment. Post-dated checks for the balance 9 months of the year are required when your child starts the program. Please date all checks for the first day of each month in favor of "The Discovery Montessori Inc.". All paid tuition fees are non-refundable.
- No placement can be confirmed prior to the receipt of the one month tuition fee deposit, the \$150 registration fee and postdated cheques for the balance months of the year.
- There will be a \$ 20.00 service charge for any returned checks. (NSF or for any other reason).
- The full monthly fee is charged for the month regardless of the days in a month, absenteeism due to illness, inclement weather closings, personal leave of absence, medical or any other type of emergency, as well as Christmas, winter, spring, summer and fall break, school and statutory holidays.
- Annual Tax receipts are provided to all parents free of charge and monthly fee receipts can also be provided if requested by the parent.
- Please note that the Region of Peel provides fee subsidy to eligible families

19.1 DELINQUENT TUITION PAYMENT.

In case of delinquent payments (one week behind schedule), the parents will be notified by the school. If payment is not arranged immediately, the school reserves the right to exclude the child from attendance until the parents have caught up on their payments. Parents must notify the school immediately if a financial crisis arises.

20. WITHDRAWAL AND FEE REFUND POLICY

If a child is to be withdrawn from the school:-

- Written one month notice or fee in lieu of must be provided to the school before the first of the month. Tuition fees cannot be refunded for less than a month's notice. Full monthly tuition fees are owing if written notice is provided on or after the first of the month. All paid tuition fees are non-refundable.

- No credit will be given for illness, vacations, personal leave of absence, any type of declaration of emergency or weather related school closures, designated school holidays, spring and winter break.
- All post-dated cheques will be returned to the parent for the remaining full months of the school year beyond the one month notice period. Parents will receive this refund for the remaining full months of the school year on child's last day of school.
- Registration fees are non-refundable.

21. CHILD MANAGEMENT: PROHIBITED PRACTICES

As per the requirements of the Section 48 of the Ontario Child Care and Early Years Act, 2014 the school strictly prohibit any type of :

1. Corporal punishment of the child.
2. Physical restraint of the child, such as confining the child to a high chair, car seat, stroller or other device for the purposes of discipline or in lieu of supervision, unless the physical restraint is for the purpose of preventing a child from hurting himself, herself or someone else, and is used only as a last resort and only until the risk of injury is no longer imminent;
3. Locking the exits of the child care centre for the purpose of confining the child, or confining the child in an area or room without adult supervision, unless such confinement occurs during an emergency and is required as part of the school's emergency management policies and procedures;
4. Use of harsh or degrading measures or threats or use of derogatory language directed at or used in the presence of a child that would humiliate, shame or frighten the child or undermine his or her self-respect, dignity or self-worth;
5. Depriving the child of basic needs including food, drink, shelter, sleep, toilet use, clothing or bedding;
6. Inflicting any bodily harm on children including making children eat or drink against their will. O. Reg. 126/16, s. 34.

22. CHILD MANAGEMENT SUPERVISION

All children are supervised by school regular staff members at all times and no volunteer or student is allowed to be alone with the children at any time.

23. EMERGENCY MANAGEMENT PROCEDURES – PARENT NOTIFICATION

The Safety and Security of the Discovery Montessori school students and staff members is of utmost importance. In this regard the school has a comprehensive Emergency Management and Evacuation plan in place. Fire Drills are held once a month and a record of these are kept in the supervisor's office. While it is difficult to gauge all potential Emergency scenarios, the following guideline will be used for providing notification to the families in the event of an Emergency situation.

| IMPACT LEVEL | NOTIFICATION RESPONSE |
|--|---|
| Low Impact: No disruption of School Activities, Isolated incident | <ul style="list-style-type: none"> • Notice on the school notice board. • Notification sent to parents via email |
| Moderate Impact: Poses no risk to the safety of the school. Does not impact more than one student | <ul style="list-style-type: none"> • Notice on the school notice board. • Notification sent to parents via email |
| Major impact: Significant Risk to the safety of the school. Disruption of School activities. Impact on many students. | <ul style="list-style-type: none"> • Phone call to the parents • Notice on the school notice board. • Notification sent to parents via email |

24. PARENT'S GRIEVANCE RESOLUTION PROCEDURE

The Discovery Montessori recognizes that as part of any relationship people periodically disagree on issues, and encourages everyone in the School Community to treat these disagreements as healthy opportunities for dialogue and positive outcomes.

It is expected that all members of the school community (parents, staff, supervisor) will make every reasonable effort to communicate openly and respectfully with each other to resolve disagreements in a non-confrontational , effective and timely manner and in the best interests of students at all times.

PROCEDURE

It is expected that school administrators and staff, with all good and positive intentions, will resolve school-based disagreements in accordance with the dispute resolution procedure established by the school and described below.

1. When the dispute involves a teacher or other staff member, the parent should bring the matter to the attention of the teacher or other staff member to attempt to resolve the matter together by seeking an appointment to discuss the issue. A record of the conversation will be kept by the staff member.
2. If the matter cannot be resolved with the teacher or other staff member or the parent has a significant concern about bringing the matter directly to the teacher or other staff member, the parent should bring the matter to the attention of the school supervisor to attempt to resolve it. A record of the meeting conversation will be kept by the staff member/Supervisor
3. If the complaint is still unresolved and the parent/guardian wishes to pursue the matter further she/he should lodge the complaint in writing with the School Owner/Administrator
4. The School Owner/Administrator will bring the precise nature of the written complaint to the notice of the teacher and seek to resolve the matter between the parties within 10 days of receipt of the written complaint. For this purpose, the School Owner/Administrator will:
 5. Provide the teacher with a copy of the written complaint; and
 6. Arrange a parent meeting with the teacher and, the School Supervisor with a view to resolving the complaint. Such a meeting should take place within 7 days of receipt of the written complaint.
7. If the complaint is still unresolved and the parent/guardian wishes to pursue the matter further, the matter may be raised and discussed by the parent with the local office of the Ministry of Education in consultation with the school supervisor.

25 FIRST DAY ITEMS

In order to ensure a comfortable environment for your child at the school, please bring the following items with your child on the first day of school

- i. A spare change of clothes (shirt, pant, socks, underwear)
- ii. A pair of comfortable indoor shoes (closed toes, these will stay in school.)
- iii. For full day kids only – a blanket, a small cot sheet and a small pillow (Please do not send adult pillows)
- iv. Please apply sunscreen to your child prior to coming to school. Sun screen with a minimum of SPF 50 is recommended.

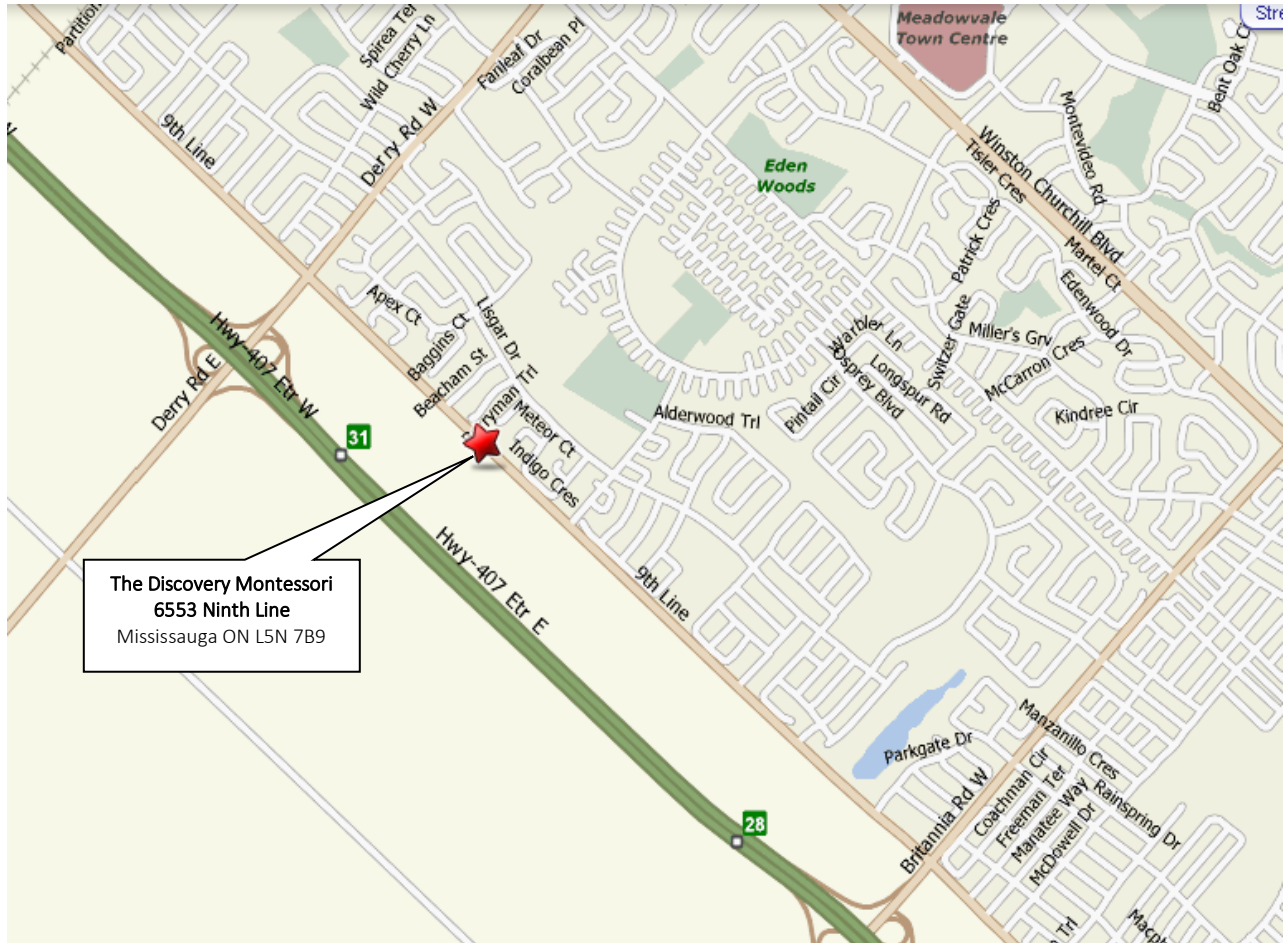
PLEASE LABEL ALL YOUR CHILD'S BELONGINGS.

The bedding will be sent home every weekend to be washed and brought back on Monday morning



26. SCHOOL LOCATION MAP

The Discovery Montessori is located at **6553 Ninth Line Mississauga ON. L5N 7B9** on the south side of the major intersection of Ninth Line and Derry Road and north of the intersection of Britannia and Ninth Line.



The Discovery Montessori
 6553 Ninth Line
 Mississauga ON L5N 7B9