

## CASA 425

425 W. FIRST ST.

Gorman Bentley: "Love As I See It." If one lives long and well, one experiences every pain, sorrow, joy and ecstasy of love. Installed on the walls of the hotel lobby and bar are numerous works by notable Village artist Gorman Bentley, each depicting a form of love as he has seen it.



## CLAREMONT LEWIS MUSEUM OF ART

200 W. FIRST ST. IN THE DEPOT

"She Opens the Door: Women Artists & Writers Shape Language & Space" Curated by CLMA. Poet-in-Residence Chloe Martinez, showcasing contemporary women artists and writers whose work prompts dialogue about gender, community, and agency.

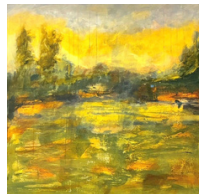


## CLAREMONT CHAMBER OF COMMERCE

205 YALE AVE.

Sonia Sleeper and Kathleen McCall.

Sonia Sleeper is a self-taught multidisciplinary artist from SoCal who enjoys working with acrylics, alcohol inks, and oils to create a unique style of contemporary art on canvas and paper. Sonia is an exhibiting member of the Pomona Valley Art Association.



Kathleen McCall experiments with abstract shapes and color variations. She usually paints in watercolors and adds fine details with pen and pencil, to define what she sees. Her desire is to surprise and delight the viewer with unexpected color, shape, and detail. McCall serves as President of the PVAA board.

## BUNNY GUNNER GALLERY & FRAMING

230 W. BONITA AVE.

Drawings Around Town Artist - Terry Givens: These delightful drawings will take you on a trip with Terry around Claremont. Works In Glass Artist: Paul Brayton Beautiful Blown: These beautiful blown glass pieces dazzle with color and style.

## BENTON MUSEUM OF ART AT POMONA COLLEGE

120 W. BONITA AVE.

Reopens February 21<sup>st</sup> with John Sparagana, Interference Patterns

## GEOFF HAMILL | SOTHEBY'S REALTY ART GALLERY

414 YALE AVE. SUITE E

Logan Hall. Artist Logan Hall is a Southern California-based artist whose work centers around abstract expressionism. Created through instinct and connection, Logan's work drifts toward discovering the sensations of a presence, not the literal figure itself. These works are the raw signals of a mind learning to move freely, reflecting the way ideas fire and shift inside of us.



## POMONA VALLEY ART ASSOCIATION

317 WEST 1<sup>ST</sup> STREET.

During February PVAA member artists explore many meanings behind red: passion, warmth, courage, revolution and memory. PVAA Gallery SOHO is proud to feature member artists Olivia Pina, Fabric Artist and Jeff Paulus, Acrylic Painter.



## STUDIO C

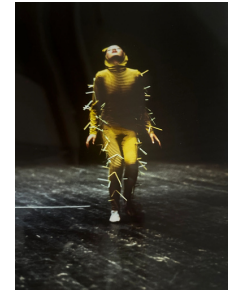
260 W. BONITA AVE.

For the love of Art. There are about 20 local artists involved in this show. Studio C is hosting some of our favorite artists. We will have a wide variety of fiber art, glass, oil, paintings, acrylic and watercolor.

## VILLAGE DANCE ARTS

149 W. FIRST ST

Dance performance with a photo series of the history of the Dance studio started in 1969.



## WHISKEY LOVES BASIL

111 N. HARVARD AVE.

Madlyne Woodward Miniature Dreamscapes "My work blends the natural elements and cats with surreal, whimsical imagery. Each piece is a small portal made from layered mediums: ink, thread, clay, paper, and whatever else feels right in the moment. Rooted in intuition and play, my miniature works invite quiet reflection, curiosity, and connection with the more-than-human world."



PRESENTED BY

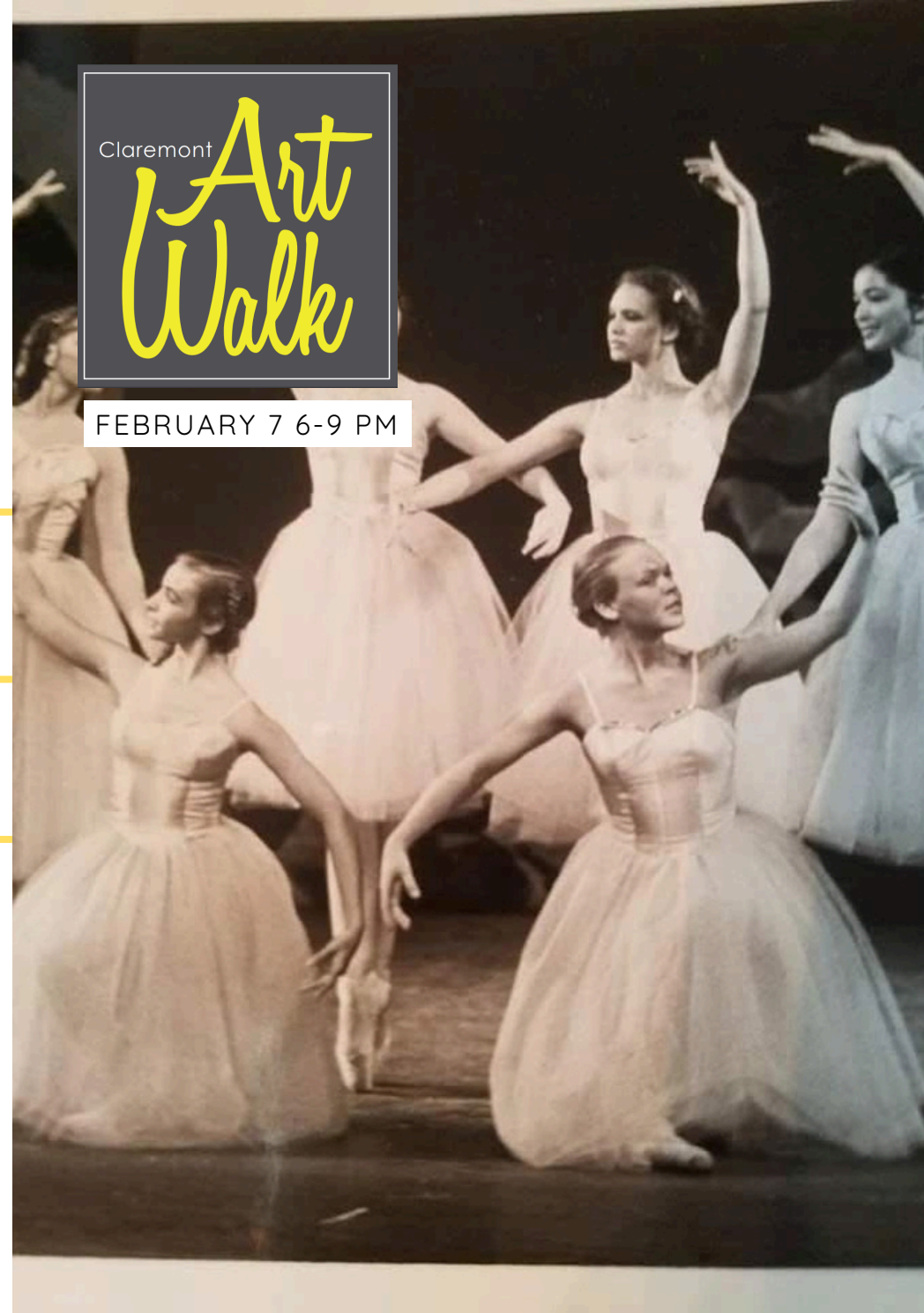
# Claremont Village

MARKETING GROUP

	 GEOFF HAMILL   SOTHEBY'S REALTY ART GALLERY		
BONITA AVE.	 CLAREMONT CHAMBER OF COMMERCE	 STUDIO C.	 BUNNY GUNNER
SECOND ST.		 WHISKEY LOVES BASIL	
 CASA 425	 POMONA VALLEY ART ASSOCIATION	 AHMAD SHARIFF ART GALLERY	
FIRST ST.	INDIAN HILL BLVD.	YALE AVE.	HARVARD AVE.  VILLAGE DANCE ARTS
		 CLAREMONT LEWIS MUSEUM OF ART	COLLEGE AVE.

EVERY FIRST SATURDAY  
 6:00 - 9:00 pm  
 CLAREMONTARTWALK.COM  
 @claremont\_art\_walk  
 #ClaremontArtWalk

## SPONSORED BY



VILLAGE DANCE ARTS  
 LIVE PERFORMANCE WITH A PHOTO SERIES