



# LARGS REGATTA FESTIVAL 2018

## 25, 26 & 27 AUG 2018



### KEELBOAT SAILING INSTRUCTIONS

*The notation '[DP]' in a rule in the Sailing Instructions means that the penalty for a breach of that rule may, at the discretion of the protest committee, be less than disqualification.*

The organising authority is Largs Sailing Club (LSC) in conjunction with Fairlie Yacht Club (FYC).

#### 1 RULES

The Regatta shall be governed by the rules as defined in the Racing Rules of Sailing (RRS).

#### 2 ADVERTISING

Boats may be required to display advertising chosen and supplied by the Organising Authority. Bow stickers if supplied shall be affixed to the forward third of the hull on both sides of each boat. [DP]

#### 3 NOTICES TO COMPETITORS

- 3.1 Notices to competitors shall be posted on the official regatta notice board situated in the lower corridor of LSC.
- 3.2 The race office shall be situated in the entrance hall of LSC.

#### 4 CHANGES TO SAILING INSTRUCTIONS

Any change(s) to the sailing instructions shall be posted not less than two hours before the first start on the day it shall take effect.

#### 5 SIGNALS MADE ASHORE

- 5.1 Signals ashore shall be made from the flagpole located on the North West corner of the Largs SC balcony.
- 5.2 The Race Committee's intentions for the day may be announced on VHF Ch72 from 09:00 with information that may include advice such as remaining in port until weather improves, intended starting location or other helpful information.

#### 6 SCHEDULE OF RACES

##### 6.1 Dates of Racing:

**Saturday 25 AUG 18** Keelboats, Dinghy and Catamarans.  
**Sunday 26 AUG 18** Keelboats, Dinghy and Catamarans.  
**Monday 27 AUG 18** Keelboats, Dinghy and Catamarans.

NOTE THAT DINGHY FLEETS WILL BE RACING IN THE LARGS CHANNEL ON SATURDAY AND MONDAY.  
 PLEASE KEEP CLEAR OF THE DINGHY RACE COURSES WHEN TRANSITING TO/FROM LARGS YACHT HAVEN.

##### 6.2 Number of Races:

Date	Classes	1st Warning Signal not before	No of Races
Saturday 25 AUG 18	Restricted Sail - Passage Race (CYCA)	10:20	1
	IRC, RC35 (IRC), CYCA.	10.30	Up to 4
Sunday 26 AUG 18 Round Cumbraes Race	IRC, RC35 (IRC), CYCA, Restricted Sail (CYCA).	10.00	1
Monday 27 AUG 18	Restricted Sail - Passage Race (CYCA)	09:30	1
	IRC, RC35 (IRC), CYCA.	09:40	Up to 3

#### 7 CLASS FLAGS AND RATING SYSTEMS

- 7.1 The Organisers will publish the Keelboat class divisions on the official notice board downstairs in Largs Sailing Club no later than 20:00 hours on Friday 24 AUG 18, the class divisions may also be published on the event website. **Please check the class divisions on the official notice board prior to taking part in the event.**

Class	Rating System	Class Flag
Class 1	IRC	Num Pennant 1
RC35	IRC	IC Flag R
Class 3	CYCA	Num Pennant 3
Class 4	CYCA	Num Pennant 4
Class 5 Restricted Sail*	CYCA	Num Pennant 5

- 7.2 **\*Restricted Sail:** Spinnakers shall not be used, and only one headsail may be used at any one time except for cutter rigged (or similar) yachts that have 2 (or more) headsails recorded on their CYCA rating certificate that may use the recorded number of headsails simultaneously.
- 7.3 Keelboat competitors should display their class flag in a prominent position from their backstay (or starboard shroud for boats without a backstay) [DP].
- 7.4 To alert boats that a race or sequence of races will begin soon, an orange flag will be displayed (with one sound) not less than 5 minutes before the first warning signal of a series of starts is displayed.
- 7.5 The Organisers may combine, divide or add classes depending on the number of entries, class starts may also be combined at the discretion of the Race Committee.

## 8 RACING AREAS

### 8.1 SATURDAY AND MONDAY

- 8.1.1 Keelboats will race in the area to the north of Great Cumbrae.
- 8.1.2 Dinghies & Catamarans will race in the Largs Channel.
- 8.1.3 The keelboat committee vessel may broadcast her approximate location on **VHF Ch 72**. Competitors should note that the keelboat race area may be up to 6NM from Largs Yacht Haven.

### 8.2 SUNDAY

- 8.2.1 Racing for all classes will be around the Island(s) of Cumbrae. Note that in marginal weather conditions, the dinghy and catamaran fleet may sail an alternative course in the Largs Channel.
- 8.2.2 The Race Committee will communicate with competitors taking part in the Round Cumbraes Race on VHF Ch72.

## 9 THE COURSES

### 9.1 SATURDAY AND MONDAY

- 9.1.1 Course configurations for Classes 1, RC35, 3 and 4 on Saturday are as described in Appendix 1.
- 9.1.2 Class 5 Saturday and Monday only: the Race Officer will advise the course to be sailed by VHF Ch72 prior to the first signal. Note that Class 5 will be the first class to start on Saturday and Monday.

### 9.2 SUNDAY

- 9.2.1 Course configurations for all Classes on Sunday are as described in Appendix 3.

- 9.3 **COURSE SIGNALS:** The committee vessel shall display a letter on a coloured background (see table below) to indicate the courses to be sailed.

<b>Class</b>	<b>Letter Colour</b>	<b>Background Colour</b>
Class 1	Black	White
RC35	Black	Yellow
Class 3	Black	Pink
Class 4	Black	Light Blue
Class 5 - Sunday Only. Saturday and Monday's courses will be announced by VHF on Ch72	White	Dark Blue
Dinghy & Catamaran	Black	Green

- 9.4 Appendices 1, 2 and 3 indicate the courses, including the order in which marks/islands are to be passed and the side on which each mark is to be left. They do not accurately indicate the angle or distance between legs.

## 10 MARKS

### 10.1 SATURDAY AND MONDAY.

- 10.1.1 **COURSES A, B, C and D:** Marks 1, 2, 3 and 4 will be yellow inflatable cylinders, Sp and Ss will be orange inflatable cylinders and F will be a blue inflatable cylinder.
- 10.1.2 **COURSES E and F:** Marks 1, 1a and 4 will be yellow inflatable cylinders, marks 2, 2a and 3 will be blue inflatable cylinders, marks Ss and Sp will be orange inflatable cylinders.
- 10.1.3 **Class 5 Only:** Course marks are as described in Appendix 2.

### 10.2 SUNDAY.

- 10.2.1 Marks for all Classes on Sunday are as described in Appendix 3.

## 11 THE START

### 11.1 STARTING LINE SATURDAY AND MONDAY.

- 11.1.1 The starting line will be between two orange inflatable marks. The committee vessel will take up station near one of the starting marks and on the extension of the starting line but may not be at anchor. Keelboats should not approach within 20m of the committee vessel [DP].
- 11.1.2 Class 5 will use the same start line as Classes 1, RC35, 3 and 4.

## 11.2 STARTING LINE SUNDAY

11.2.1 The starting line on Sunday will be between a staff or mast displaying an orange flag on the committee vessel and a blue inflatable cylinder. An Inner Distance Mark (IDM), normally a narrow yellow inflatable, may be laid approximately on the start line. Boats shall not pass between the committee vessel and the IDM [DP].

11.2.2 The keelboat committee vessel will be located to the south west of Largs Yacht Haven and will display Numeral Pennant 9.

11.3 Boats whose warning signal has not been made shall avoid the starting area [DP].

11.4 A countdown to starting signals and additional race information may be broadcast on **VHF Ch72** for all classes.

11.5 OCS infringements may be broadcast via the VHF Channels indicated above, failure to broadcast OCS infringements shall not be grounds for redress.

11.6 After a general recall the first substitute will be removed one minute before the starting signal for the next scheduled class. No sound signal will be given. This changes RRS 29.

11.7 The normal starting sequence shall not be interrupted by a general recall. The warning signal for the class which has had a general recall shall be five minutes before its starting signal and shall normally be displayed at the starting signal of the last class to start correctly in the schedule. If more than one class is subject to a general recall, the second of these classes shall start five minutes after the first and so on. If a class subject to general recall is the last or only class to start, the next signal shall be the new warning signal, which shall normally be displayed five minutes after the original starting time.

## 12 CHANGE OF THE NEXT LEG OF THE COURSE

To change the next leg of the course, the race committee shall move the original mark (or the finishing line) to a new position.

## 13 SHORTENED COURSE

### 13.1 SATURDAY AND MONDAY:

Classes 1, RC35, 3 and 4 only - in addition to RRS Rule 32.2, if a race is to be shortened at any mark of the course a finish mark (normally a pink inflatable) will be laid adjacent to that mark of the course. Boats shall finish by passing between these two marks. The nearby committee vessel may not be at anchor. Boats shall not pass between a finishing mark and the committee vessel [DP].

### 13.2 SUNDAY:

13.2.1 In addition to RRS 32.2 the Round Cumbrae Race may be shortened at approximately 90 degrees to an island. Competitors shall finish between the adjacent island and the vessel displaying Flag S.

## 14 THE FINISH

### 14.1 SATURDAY AND MONDAY:

14.1.1 The finishing line will be between mark 3 and mark F for courses A, B, C and D. The finish line will be between marks Ss and Sp for courses E and F (see Appendix 1 for details). A committee vessel will take up station near one of the marks and be on the extension of the finish line but may not be at anchor. Boats shall not pass between a finish mark and the committee vessel [DP].

14.1.2 **Class 5 Only:** The Race Officer will advise the course to be sailed by VHF Ch72 prior to the first signal, including the location of the finish.

### 14.2 SUNDAY

14.2.1 The finishing line for all classes will be between a staff or mast displaying an orange flag on the committee vessel and a blue Inflatable cylinder.

14.2.2 The keelboat finishing committee vessel, except when the course is shortened under SI 13.1, will be located to the south west of Largs Yacht Haven and will display Numeral Pennant 9.

## 15 TIME LIMITS

### 15.1 SATURDAY AND MONDAY:

<b>Class</b>	<b>Time Limit</b>
Classes 1, RC35, 3, 4	90 mins after the start of each race
Class 5 (Restricted Sail)	1600hrs

### 15.2 SUNDAY:

<b>Class</b>	<b>Time Limit</b>
Classes 1, RC35, 3, 4	1600hrs
Class 5 (Restricted Sail)	1600hrs

15.3 Boats failing to finish within the time limit will be scored DNF. This changes RRS 35, A4 and A5.

15.4 If no boat within a Class finishes within the time limit, the times of the previous round completed by the leading boat may be used to calculate results. Subsequent retirements or rule infringements shall be disregarded.

## 16 PROTESTS

16.1 The Exoneration Penalty [and the Advisory Hearing and RYA Arbitration] of the RYA Rules Disputes Procedures may be available.

- 16.2 Protest forms are available at the Protest Committee desk in Largs SC. Protests shall be delivered there within the protest time limit.
- 16.3 The protest time limit is 60 minutes after the last boat has finished the last race of the day, or 60 minutes after the race committee signals "no more racing today", whichever is later. On Saturday, the protest time limit will be extended to 90 minutes after the last boat has finished or 90 minutes after the race committee signals "no more racing today", whichever is later. The time limit will be posted on the Notice Board at the conclusion of racing.
- 16.4 Notices shall be posted within 30 minutes of the expiry of the protest time limit to inform competitors of hearings in which they are parties or named as witnesses. Hearings shall be heard in the protest hearing room normally located upstairs in Largs SC. Parties to each protest are requested to remain in the vicinity.
- 16.5 Notices of protests by the race committee shall be posted to inform boats under RRS 61.1(b).
- 16.6 Protests shall be heard as soon as possible, in approximately the order of receipt. It is the responsibility of the Protestor, Protestee and Witnesses to make themselves available for the hearing.
- 16.7 On the last day of the Regatta a request for reopening a hearing shall be delivered:
- (a) within the protest time limit if the party requesting reopening was informed of the decision on the previous day;
  - (b) no later than 15 minutes after the party requesting reopening was informed of the decision on that day.
- This changes RRS Rule 66.
- 16.8 The Protest Committee may impose a penalty that is less than DSQ for boats that have been found to break RRS 55 [DP].

## 17 SCORING

- 17.1 One race is required to be completed to constitute a series.
- (a) When fewer than 4 races have been completed, a boat's series score will be the total of her race scores.
  - (b) When 4 or more races have been completed, a boat's series score will be the total of her race scores excluding her worst score.

## 18 SAFETY REGULATIONS

- 18.1 NAVIGATION MARKS: Channel marker buoys may be left on either hand unless they are a designated mark of the course (see Appendices to these sailing instructions for details). The CPA South Cardinal 'No 38' - *Tan Spit Buoy* to the south west of Great Cumbrae, and CPA Red Can - 'HUN 3' at the north east of Great Cumbrae shall be passed on their proper side.

- 18.2 Clydeport Operations Limited Restriction [DP].

NARROW CHANNELS. Attention is drawn to the International Regulations for the prevention of collisions at sea, 1972. Particular notice shall be taken of Rule 9b, which states that "a vessel of less than 20m in length or a sailing vessel shall not impede the passage of a vessel which can safely navigate only within a narrow channel or fairway". Whilst racing or on a passage in the Firth of Clyde north of Cumbrae Head yachts shall regard any such recommended channels as a "Narrow Channel" within the meaning of the IRPCS 9b.

Furthermore, Clydeport Operations Limited has decreed that any waters in the Firth of Clyde where vessels by virtue of their size, draught, speed or proximity to land, hazards and other vessels are unable to manoeuvre freely shall be regarded as a "Narrow Channel". Whilst racing, any yacht which is unable for reasons of lack of wind or other cause, to sail clear of a large power-driven vessel shall start her engine and/or paddle in order to clear and thereafter shall report full details to the Race Committee.

Competitors are reminded of the Clydeport Operations Limited by-law, which prohibits yachts and other craft from manoeuvring within 100m of any ferry terminal. Particular regard should be paid to this when in the vicinity of the Caledonian MacBrayne facilities at Largs and Cumbrae.

- 18.3 Any boat leaving the course area should notify the committee vessel. They shall not sail through the finish line but approach the Committee vessel around the end of the line [DP].
- 18.4 It is recommended that keelboats participating in the event comply with Category 4 of the current World Sailing Offshore Special Regulations.

## 19 EQUIPMENT AND MEASUREMENT CHECKS

A boat or equipment may be inspected at any time for compliance with the appropriate class rules and sailing instructions. On the water, a boat can be instructed by a race committee measurer to proceed immediately to a designated area for inspection [DP].

## 20 PRIZES

- 20.1 The main prize giving will take place in the Largs Regatta Festival Marquee following completion of racing on Monday 27 AUG 2018. Prizes will be awarded for a series of races combining Saturday, Sunday and Monday's results.
- The HUNTERSTON WHEEL TROPHY for the Yacht of the Event will be awarded to the yacht that, in the opinion of the Largs Regatta Festival Committee, has produced the best performance during Largs Regatta Festival.
- 20.2 A separate prize giving will take place in the marquee on Sunday 26 AUG 2018 for the Round Cumbrae Race winners.

## 21 RISK STATEMENT

- 21.1 Rule 4 of the Racing Rules of Sailing states: "The responsibility for a boat's decision to participate in a race or to continue racing is hers alone."
- 21.2 Sailing is by its nature an unpredictable sport and therefore inherently involves an element of risk. By taking part in the event, each competitor agrees and acknowledges that:

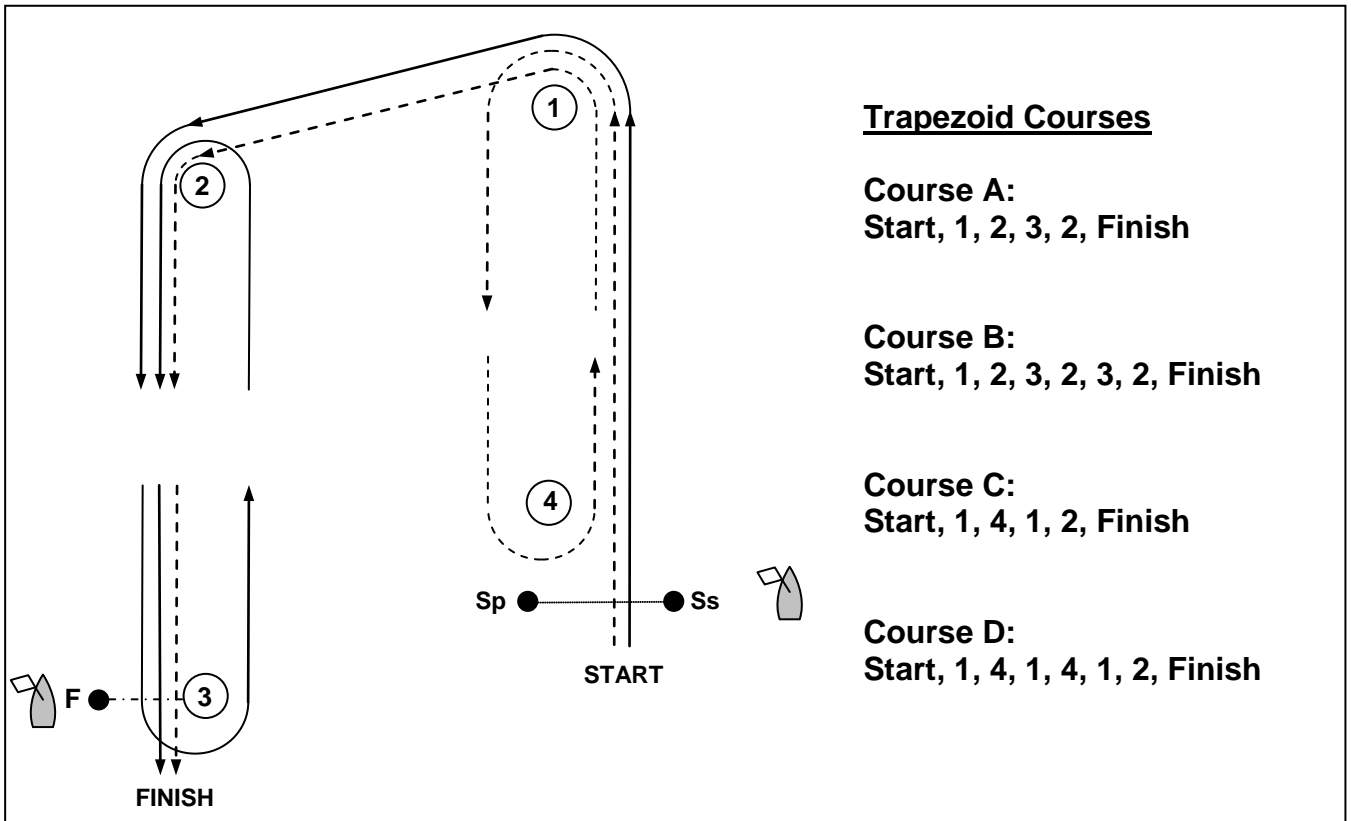
- (a) They are aware of the inherent element of risk involved in the sport and accept responsibility for the exposure of themselves, their crew and their boat to such inherent risk whilst taking part in the event;
- (b) They are responsible for the safety of themselves, their crew, their boat and their other property whether afloat or ashore;
- (c) They accept responsibility for any injury, damage or loss to the extent caused by their own actions or omissions;
- (d) Their boat is in good order, equipped to sail in the event and they are fit to participate;
- (e) The provision of a race management team, patrol boats and other officials and volunteers by the event organiser does not relieve them of their own responsibilities;
- (f) The provision of patrol boat cover is limited to such assistance, particularly in extreme weather conditions, as can be practically provided in the circumstances.
- (g) It is their responsibility to familiarise themselves with any risks specific to this venue or this event drawn to their attention in any rules and information produced for the venue or event and to attend any safety briefing held for the event.

**22 INSURANCE**

Each participating boat shall be insured with valid third-party liability insurance with a minimum cover of £3,000,000 per event or the equivalent.



**Class 1, RC35, 3, 4 Courses – SATURDAY AND MONDAY ONLY**



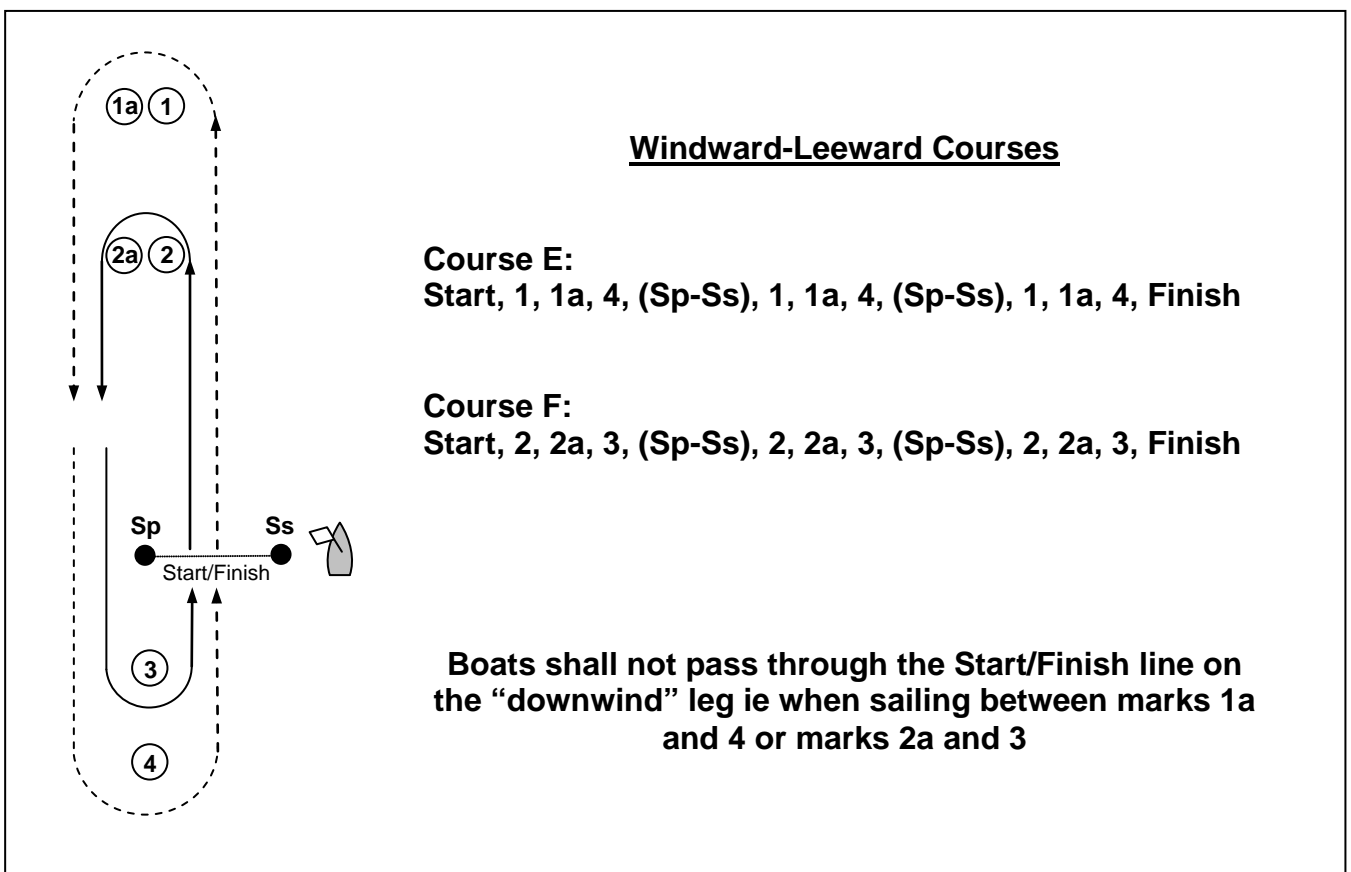
**Trapezoid Courses**

**Course A:**  
Start, 1, 2, 3, 2, Finish

**Course B:**  
Start, 1, 2, 3, 2, 3, 2, Finish

**Course C:**  
Start, 1, 4, 1, 2, Finish

**Course D:**  
Start, 1, 4, 1, 4, 1, 2, Finish



**Windward-Leeward Courses**

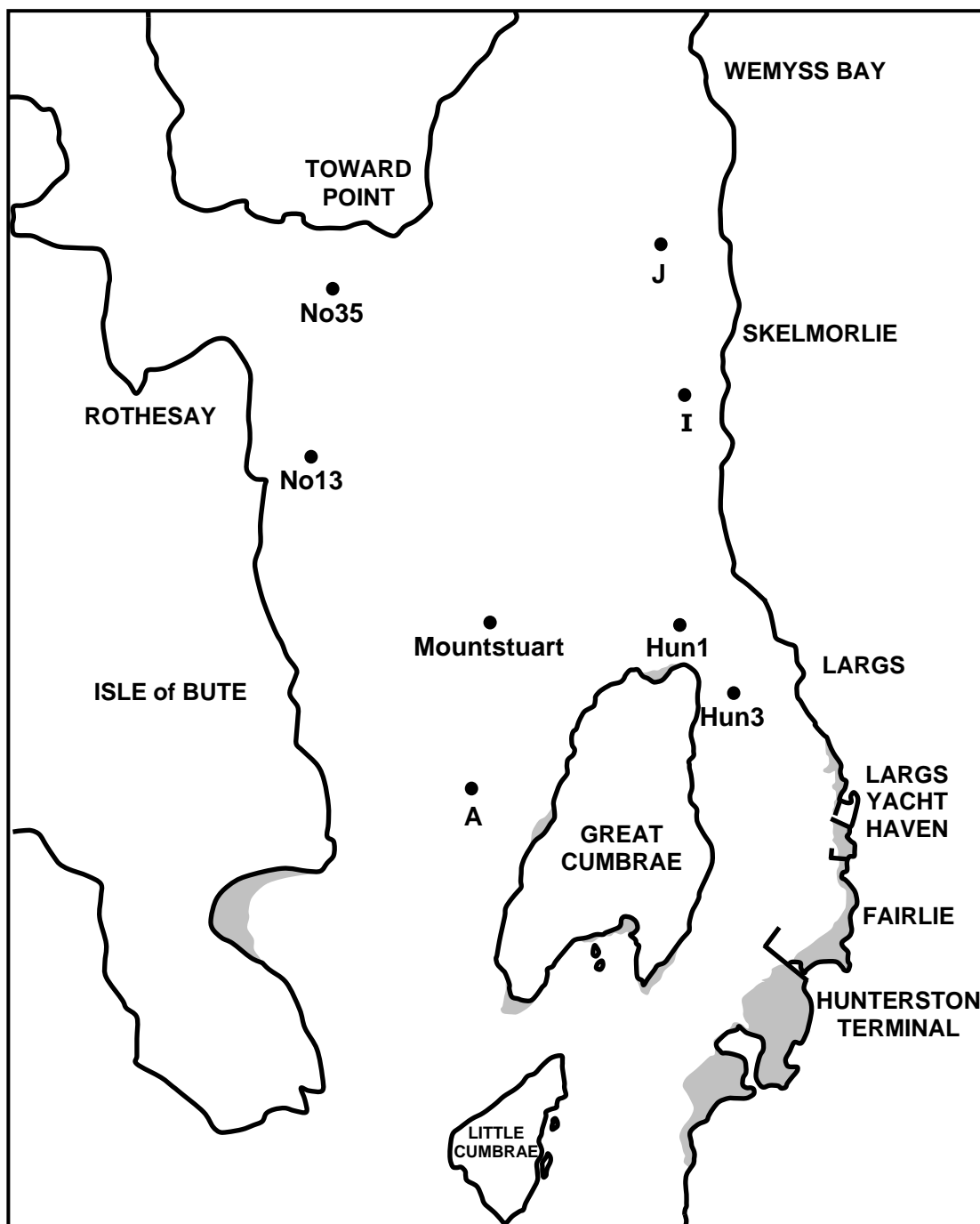
**Course E:**  
Start, 1, 1a, 4, (Sp-Ss), 1, 1a, 4, (Sp-Ss), 1, 1a, 4, Finish

**Course F:**  
Start, 2, 2a, 3, (Sp-Ss), 2, 2a, 3, (Sp-Ss), 2, 2a, 3, Finish

**Boats shall not pass through the Start/Finish line on the "downwind" leg ie when sailing between marks 1a and 4 or marks 2a and 3**

**Class 5 Course Marks – SATURDAY AND MONDAY ONLY**

The course to be sailed will be advised by the  
Race Officer on VHF Ch 72



<b>Fixed Mark</b>	<b>Approximate Position</b>
"A" Navigation Buoy (green)	N55°46.5, W04°57.8
"Hun 1" Navigation Buoy (yellow)	N55°48.1, W04°54.2
"Hun 3" Navigation Buoy (red)	N55°47.6, W04°53.5
"I" Navigation Buoy (green)	N55°50.3, W04°54.3
"J" Navigation Buoy (red)	N55°51.5, W04°54.7
"Mountstuart" Safe Water Buoy (red white)	N55°47.9, W04°57.6
"No 13" Isolated Danger Beacon (black red black)	N55°49.7, W05°00.3
"No 35" Navigation Buoy (green)	N55°51.0, W05°00.0

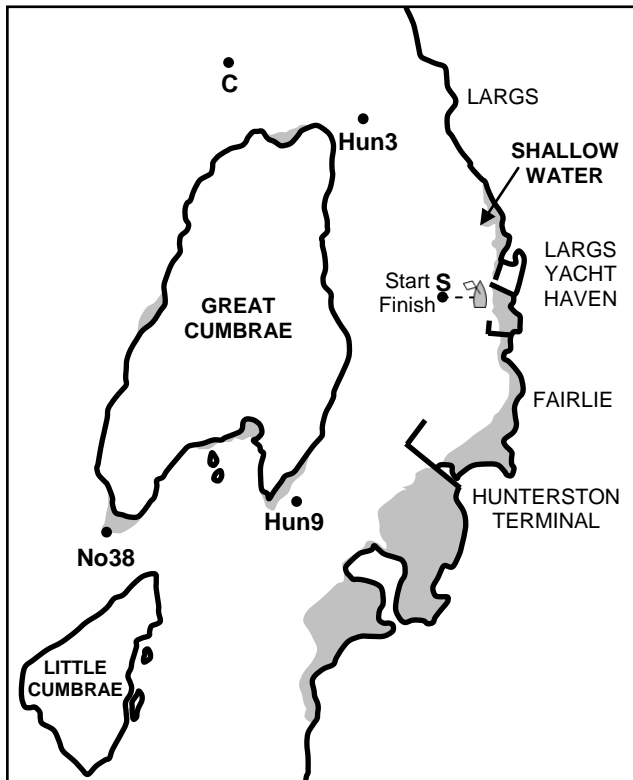
**ALL CLASSES Courses – SUNDAY ONLY**

<b>COURSE A</b>	
<i>North About, Figure of 8 plus a Loop of Great Cumbrae</i>	
<b>Mark/Island</b>	<b>Direction</b>
Start/Finish Line	South to North
Great Cumbrae	Leave to Port
Hun3	Leave to Port
C	Leave to Port
No38	Leave to Port
Little Cumbrae	Leave to Starboard
No38	Leave to Port
Hun9	Leave to Port
K	Leave to Port
Hun3	Leave to Port
No38	Leave to Port
Hun9	Leave to Port
Start/Finish Line	South to North
Repeat Until Race Committee Displays Flag S	

<b>COURSE B</b>	
<i>South About, Figure of 8 plus a Loop of Great Cumbrae</i>	
<b>Mark/Island</b>	<b>Direction</b>
Start/Finish Line	North to South
Great Cumbrae	Leave to Starboard
No38	Leave to Starboard
Little Cumbrae	Leave to Port
Great Cumbrae	Leave to Starboard
No38	Leave to Starboard
C	Leave to Starboard
Hun3	Leave to Starboard
K	Leave to Starboard
Hun9	Leave to Starboard
No38	Leave to Starboard
Hun3	Leave to Starboard
Start/Finish Line	North to South
Repeat Until Race Committee Displays Flag S	

<b>COURSE C</b>	
<i>North About Great Cumbrae</i>	
<b>Mark/Island</b>	<b>Direction</b>
Start/Finish Line	South to North
Great Cumbrae	Leave to Port
Hun3	Leave to Port
C	Leave to Port
No38	Leave to Port
Start/Finish Line	South to North
Repeat Until Race Committee Displays Flag S	

<b>COURSE D</b>	
<i>South About Great Cumbrae</i>	
<b>Mark/Island</b>	<b>Direction</b>
Start/Finish Line	North to South
Great Cumbrae	Leave to Starboard
No38	Leave to Starboard
C	Leave to Starboard
Hun3	Leave to Starboard
Start/Finish Line	North to South
Repeat Until Race Committee Displays Flag S	



<b>Marks</b>	
<i>(all positions are approximate)</i>	
"C" Navigation Buoy (Green)	N55°48.1, W04°55.3
"Hun3" Navigation Buoy (Red)	N55°47.6, W04°53.5
"Hun9" Navigation Buoy (Red)	N55°44.6, W04°54.4
"No38" South Cardinal Buoy	N55°44.4, W04°57.1
"S" Blue Inflatable Cylinder	West of LYH