

Largs Regatta Festival 30th & 31st August 2025

SAILING INSTRUCTIONS FOR DINGHIES

The Organising Authority (OA) is Largs Sailing Club

The notation '[NP]' in a rule means that a boat may not protest another boat for breaking that rule. This changes RRS 60.1(a).

The notation '[DP]' in a rule means that the penalty for a breach of the rule may, at the discretion of the protest committee, be less than disqualification

1 RULES

- 1.1 The Event will be governed by the rules as defined in The Racing Rules of Sailing (RRS).
- 1.2 The prescriptions of the RYA available at www.rya.org.uk will apply.

2 CHANGES TO SAILING INSTRUCTIONS

Any change to the sailing instructions will be posted not less than one hour before the first start of the day it will take effect, except that any change to the schedule of races will be posted by 2000 on the day before it will take effect.

3 COMMUNICATIONS WITH COMPETITORS

- 3.1 The online official noticeboard is located at the LSC website Regatta Festival page: <https://largsregattafestival.com/lrf-noticeboard>. There will be no physical notice board.
- 3.2 [DP] While racing, except in an emergency, a boat shall not make voice or data transmissions and shall not receive voice or data communication that is not available to all boats.
- 3.3 Entrants are to register and receive a tally number from the desk located in the downstairs lobby of Largs Sailing Club. The registration will be open from 0900 - 1100 on Saturday 30th August and 0900-0930 on Sunday 31st August (for those not registered on Saturday).
- 3.4 *Competitor's briefing will take place at 1030 on Saturday 30th August.*
- 3.5 The event will be using a WhatsApp group to keep competitors informed and can be joined using the QR code below.



4 CODE OF CONDUCT

[DP] Competitors and support persons shall comply with reasonable requests from race officials.

5 SIGNALS MADE ASHORE

Signals made ashore will be displayed from the flagpole located on the Northwest corner of the Largs SC balcony.

6 SCHEDULE OF RACES

<i>Class</i>	<i>Total Number of Races</i>	<i>No Of Races Scheduled Saturday 30th Aug</i>	<i>No Of Races Scheduled Sunday 31st Aug</i>
Catamarans	5	4	1
Long Course Handicap Dinghy	5	4	1
Short Course Handicap Dinghy	5	4	1

- 6.1 The scheduled time of the first warning signal on Saturday is not before 1155 and on Sunday not before 1027.
- 6.2 On Sunday no warning signal shall be made after 1500.
- 6.3 The Split between Fast and Slow Handicap Classes will be at the discretion of the race committee and be advised no later than 2000 on the day before racing.

7 CLASS FLAGS AND START ORDER

- 7.1 Class flags and order of start by class are as follows:

Class	Flag
Catamarans	F (Foxtrot)
Long Course Handicap	E (Echo)
Short Course Handicap	G (Golf)

8 RACING AREAS

Racing for Dinghies and Catamarans will take place in the Largs Channel and the waters surrounding Great Cumbrae Island.

9 THE COURSES

- 9.1 The diagram and details of the courses for Saturday are at **Appendix 1**.
- 9.2 The diagrams of the course for Sunday are at **Appendix 2 & 3(Sunday)**, the course chosen for the day will be displayed on the club balcony.

10 MARKS

- 10.1 Marks used are described in **Appendix 1 (Saturday), Appendix 2 & 3 (Sunday)**
- 10.2 The race committee may substitute marks of different colours or shapes to those specified in the course diagrams

11 OBSTRUCTIONS

The entrance to the Largs Yacht Haven is designated as an obstruction; boats shall not pass between the red and white striped safe water mark and the entrance to the Marina.

12 THE START

12.1 Races on Saturday will be started as shown in the table below.

<i>Minutes before starting Signal</i>	<i>Visual signal</i>	<i>Sound Signal</i>	<i>Means</i>
3	Class flag displayed on committee boat	One	Warning Signal
2	Preparatory flag displayed on committee boat	One	Preparatory Signal
1	Preparatory flag removed on committee boat	One	One minute
0	Class flag removed on committee boat	One	Starting Signal

12.2 On Saturday, shortly before a starting sequence an Orange flag will be displayed on the committee boat with multiple sound signals.

12.3 Races on Sunday will be started from the balcony of the sailing club using the lights as shown in the table below.

<i>Minutes before starting Signal</i>	<i>Visual signal</i>	<i>Sound Signal</i>	<i>Means</i>
8	All lights on club house balcony (Yellow, Green, Red, Blue)	One	Pre-warning signal.
3	Yellow light on	One	Warning Signal
2	Yellow and Blue light on	One	Preparatory Signal
1	Yellow light on and Blue light off	One	One minute
0	All lights off.	One	Starting Signal

12.4 On Sunday, other Race Signals will be displayed from the flagpole located on the Northwest corner of the Largs SC balcony.

12.5 Planned starting order on Saturday 30th August as follows;

- a) Catamarans
- b) Long Course Handicap
- c) Short Course Handicap

12.6 The number of laps to be sailed on Saturday will be displayed on the committee boat prior to the race start.

12.7 For Race 1 on Saturday, each class's warning signal will be made at the same time as the starting signal of the preceding class.

- 12.8 For subsequent races the race committee may adjust the order of starts if a class is still finishing a previous race. In this case the race committee will start each class separately (ie the starting signal will not coincide with a warning signal for another class).
- 12.9 The intention for the Sunday will be to have one starting line and sequence for all classes and separate results for each class calculated.
- 12.10 The starting line on Saturday will be between the Committee Vessel staff/mast displaying an Orange Flag and a Yellow buoy on Saturday, located as shown in **Appendix 1** (Saturday).
- 12.11 The starting line on Sunday will be between the Pink laid mark as show in **Appendix 2 & 3** (Sunday) and the flag pole displaying the Orange Flag on the SW corner of the club house. Note there will be an inner distance mark (yellow pencil) laid on Sunday; boats shall not pass between the inner distance mark and the club house.
- 12.12 [DP] Boats whose warning signal has not been made shall avoid the starting area during the starting sequence for other races.
- 12.13 **INDIVIDUAL RECALL:** On **Saturday** when at a boat's starting signal any part of her hull is on the course side of the starting line or she must comply with rule 30.1, the race committee shall promptly display the **Flag X with one sound**. The flag shall be displayed until the hull of each such boat has been completely on the pre-start side of the starting line or one of its extensions until all such boats have complied with Rule 30, but no later than two minutes after the starting signal or one minute before any later starting signal, whichever is earlier. If rule 29.2, 30.3 or 30.4 applies this rule does not
- For the **Sunday race**, Flag X will not be displayed but instead **one sound signal and the yellow light** will be re-illuminated. The light shall be displayed until the hull of each such boat has been completely on the pre-start side of the starting line or one of its extensions until all such boats have complied with Rule 30, but no later than two minutes after the start. If rule 29.2, 30.3 or 30.4 applies this rule does not.
- 12.14 **GENERAL RECALL:** On **Saturday**, when at the starting signal the race committee is unable to identify boats that are on the course side of the starting line or to which RRS rule 30 applies, or there has been an error in the starting procedure, the race committee may signal a general recall (by displaying the **First Substitute along with two sounds**). The First Substitute will be removed at the next class one minute signal or in the case of the last class in the start sequence one minute before the new start warning signal.
- For **Sunday** First Substitute will not be displayed but the **yellow light will be flashing with 2 sound signals**. The yellow flashing light will be removed one minute before the new start warning signal.
- 12.15 The normal starting sequence shall **not** be interrupted by a general recall. The warning signal for the class which has had a general recall shall be three minutes before its starting signal and shall normally be displayed after the starting signal of the last class to start correctly in the schedule. If more than one class is subject to a general recall, the second of these classes shall start three minutes after the first and so on. If a class subject to general recall is the last / only class / only class ready to start, the next signal after the general recall shall be the new warning signal for that class.

13 CHANGE OF THE NEXT LEG OF THE COURSE

- 13.1 Minor mark moves (up to approximately 100m) may be made, on the first lap only, without signalling the change.
- 13.2 The Round Cumbrae Race (Sunday) may be shortened at No 38, O or Hun 3. Competitors shall finish between the mark and the vessel displaying Flag D, Flad S and their class flag (from 7.1).

14 THE FINISH

- 14.1 For Saturday racing, boats shall finish between mark 4 (blue) and the finish boat with blue flag displayed as described in **Appendix 1**.

14.2 For Saturday racing, if no boat within a class finishes within the time limit, the times of the previous round completed by the leading boat may be used to calculate results. Subsequent retirements or rule infringements shall be disregarded. The decision by the race committee to use this procedure or not to use it shall not be grounds for requesting redress. This changes RRS rule 28.1 and RRS Rule 60.1(b).

14.3 All classes will finish at the same finishing line on Sunday, between the Pink laid mark and the Sailing Club Mast with Blue Flag.

15 PENALTY SYSTEM

15.1 The Two-Turns Penalty is replaced by the One-Turn Penalty. This changes RRS 44.1

TIME LIMITS AND TARGET TIMES

15.2 Time limits for all competitors and target times for the lead boat for Saturday racing are as follows:

<i>Class</i>	<i>Race Target Time</i>	<i>Race Time Limit</i>	<i>Finishing Window</i>
All Classes	40 min	90 min	30 min

15.3 The Finishing Window is the time for boats to finish after the first boat in their class sails the course and finishes. Boats failing to finish within the Finishing Window, and not subsequently retiring, penalized or given redress, will be scored Time Limit Expired (TLE) without a hearing. A boat scored TLE shall be scored points for the finishing place one more than the points scored by the last boat that finished within the Finishing Window. This changes RRS 35, A5.1, A5.2 and A10.

15.4 Time limit for all competitors on the Sunday race is 1600hrs boats that fail to finish before the time limit will be scored TLE without a hearing. This changes RRS 35, A5.1, A5.2 and A10.

16 HEARING REQUESTS

16.1 RRS Appendix T Applies

16.2 The protest time limit is 60 minutes after the last boat finishes the last race of the day or the race committee signals no more racing today, whichever is later.

16.3 Hearing request forms are available from the Largs sailing Club Office.

16.4 The OA will provide a list, no later than 30 minutes after the protest time limit, to inform competitors of hearings in which they are parties or named as witnesses.

17 SCORING.

17.1 Dinghies will be scored using the Portsmouth Yardstick (PY) rating system. Corrected times will determine race rankings.

17.2 Catamarans will be scored using the Small Catamaran Handicap Rating System (SCHRS). Rankings will be based on corrected times.

17.3 3 One race is required to be completed to constitute a series.

- When fewer than 4 races have been completed, a boat's series score will be the total of her race scores.
- When 4 or more races have been completed, a boat's series score will be the total of her race scores excluding her worst score.

18 SAFETY REGULATIONS

18.1 [NP] [DP] A tally system will be used during the Regatta; To check-out competitors shall collect a wristband before entering the slipway indicating that they intend to go afloat. At the end of racing

(or retiring) the wristband must be handed back to the same point from which it was collected (i.e., the slipway used for launching for the relevant class). The ashore hand in shall be made no later than the protest time limit. Competitors that fail to tally correctly may be subject to protest by the Race Committee, the Protest Committee may impose a penalty that is less than DSQ for boats that have been found to infringe, any points penalty shall be applied to the first race completed on the day the infringement took place. This changes RRS Rule 63.1.

18.2 Adequate personal buoyancy shall be worn by competitors at all times whilst afloat, except briefly while changing or adjusting clothing or personal equipment. A wetsuit or dry suit is not adequate personal buoyancy; this changes RRS Rule 40.

18.3 [NP] [DP] A boat that retires from a race shall notify the race committee immediately on coming ashore.

18.4 [NP] [DP] Clydeport Operations Limited Restrictions.

NARROW CHANNELS. Attention is drawn to the International Regulations for the prevention of collisions at sea, 1972. Particular notice shall be taken of Rule 9b which states that “a vessel of less than 20m in length or a sailing vessel shall not impede the passage of a vessel which can safely navigate only within a narrow channel or fairway”. Whilst racing or on a passage in the Firth of Clyde north of Cumbrae Head yachts must regard any such recommended channels as a “Narrow Channel” within the meaning of the IRPCS 9b.

Furthermore, Clydeport Operations Limited has decreed that any waters in the Firth of Clyde where vessels by virtue of their size, draught, speed or proximity to land, hazards and other vessels are unable to manoeuvre freely must be regarded as a “Narrow Channel”. Whilst racing any yacht which is unable for reasons of lack of wind or other cause, to sail clear of a large power-driven vessel shall start her engine and/or paddle in order to clear and thereafter shall report full details to the Race Committee.

Competitors are reminded of the Clydeport Operations Limited Byelaw which prohibits yachts and other craft from manoeuvring within 100m of any ferry terminal. Particular regard should be paid to this when in the vicinity of the Caledonian Macbrayne facilities at Largs and Cumbrae

19 REPLACEMENT OF CREW OR EQUIPMENT

19.1 Substitution of the helm during the regatta will be scored as a separate entry unless written permission is obtained from the Race Committee.

19.2 Substitution of the registered boat during the regatta will be counted as a separate entry unless written permission is obtained from the Race Committee. It is the responsibility of the competitor making the substitution to ensure that this is communicated to the Race Committee.

20 EQUIPMENT AND MEASUREMENT CHECKS

20.1 A boat or equipment may be inspected at any time by a member of the Race Committee for compliance with the class rules and sailing instructions

20.2 [DP] [NP] Sponsor's stickers must be displayed on every competing boat on the hull at the bow just below the deck line.

20.3 The fact that race officials may conduct inspections of a boat does not reduce the responsibilities of each competitor set out in the event documentation.

21 PRIZES

21.1 Prizes will be awarded to the first three boats in each Class for the Series. The number of prizes awarded may vary, at the discretion of the OA, depending on the number of entries within each class.

- 21.2 The ENTERPRISE AYRSHIRE ROSEBOWL will be awarded to the yacht, dinghy or catamaran that, in the opinion of the Largs Regatta Festival Committee, has produced the best overall performance of all boats during Largs Regatta Festival.
- 21.3 The LARGS 'LIFEBOAT CREW' TROPHY for the Dinghy or Catamaran of the Event will be awarded to the dinghy or catamaran which, in the opinion of the Largs Regatta Festival Committee has produced the best performance during Largs Regatta Festival.

22 RISK STATEMENT

- 22.1 Rule 3 of the Racing Rules of Sailing states: "The responsibility for a boat's decision to participate in a race or to continue racing is hers alone."
- 22.2 Sailing is by its nature an unpredictable sport and therefore inherently involves an element of risk. By taking part in the event, each competitor agrees and acknowledges that:
- a) They are aware of the inherent element of risk involved in the sport and accept responsibility for the exposure of themselves, their crew and their boat to such inherent risk whilst taking part in the event;
 - b) They are responsible for the safety of themselves, their crew, their boat and their other property whether afloat or ashore;
 - c) They accept responsibility for any injury, damage or loss to the extent caused by their own actions or omissions;
- 22.3 Their boat is in good order, equipped to sail in the event and they are fit to participate;
- d) The provision of a race management team, patrol boats and other officials and volunteers by the event organiser does not relieve them of their own responsibilities;
 - e) The provision of patrol boat cover is limited to such assistance, particularly in extreme weather conditions, as can be practically provided in the circumstances;
 - f) It is their responsibility to familiarise themselves with any risks specific to this venue or this event drawn to their attention in any rules and information produced for the venue or event and to attend any safety briefing held for the event.

23 INSURANCE

Each participating boat shall be insured with valid third-party liability insurance with a minimum cover of £3,000,000 per event.

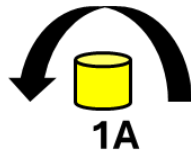
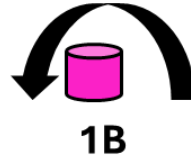
Appendix 1 To LRF Dinghies and Catamarans SIs 2025

Saturday racing Course Chart**Course 1 (Cats and Long Fleet)****2 laps**

- Start between committee boat displaying orange flag and yellow start pin
- 1B (to port),
- 3P (to starboard) or 3S (to port)
- 1B (to port),
- 3S (to port)
- To Finish (between mark 4 and finish boat with blue flag)

3 laps

- Start between committee boat displaying orange flag and yellow start pin
- 1B (to port),
- 3P (to starboard) or 3S (to port)
- 1B (to port),
- 3P (to starboard) or 3S (to port)
- 1B (to port),
- 3S (to port)
- To Finish (between mark 4 and finish boat with blue flag)



Marks 1B, Pink Dumpy

Mark 1A Yellow Dumpy

Mark 3P & 3S Yellow Dumpy

CV Start Flag. Orange

Start Pin Yellow Dumpy

Mark 4 (Finish Pin) Blue Dumpy

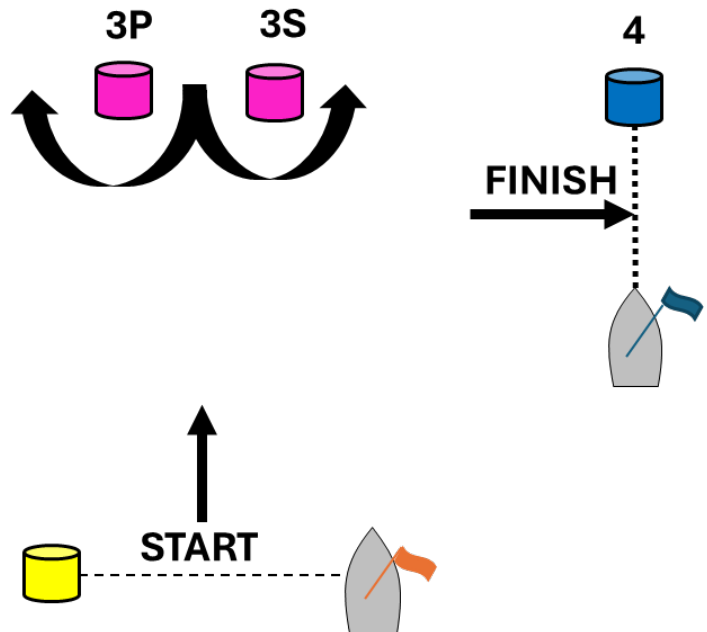
CV Finish Flag Blue

Course 2 (Short Fleet)**2 laps**

- Start between committee boat displaying orange flag and yellow start pin
- 1A (to port),
- 3P (to starboard) or 3S (to port)
- 1A (to port),
- 3S (to port)
- To Finish (between mark 4 and finish boat with blue flag)

3 laps

- Start between committee boat displaying orange flag and yellow start pin
- 1A (to port),
- 3P (to starboard) or 3S (to port)
- 1A (to port),
- 3P (to starboard) or 3S (to port)
- 1A (to port),
- 3S (to port)
- To Finish (between mark 4 and finish boat with blue flag)



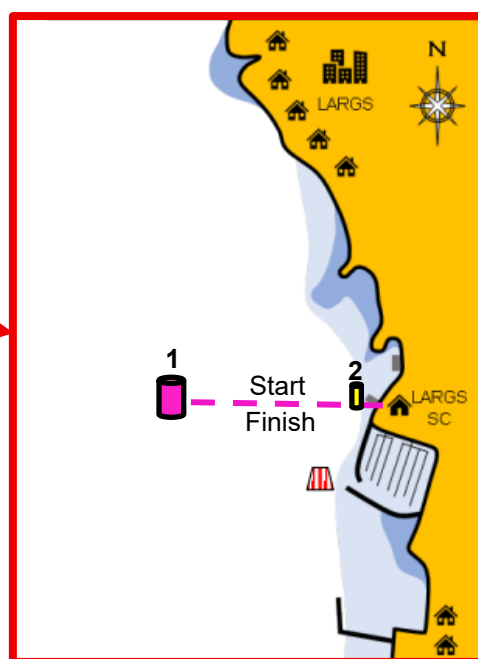
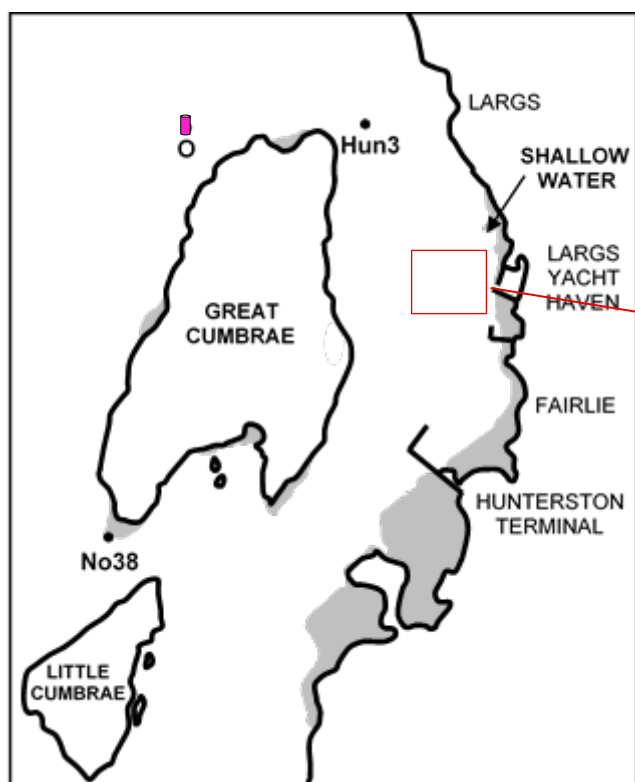
Appendix 2 To LRF Dinghies and Catamarans SIs 2025

Sunday - Round Cumbraes Courses

COURSE 1 North About Great Cumbrae	
Mark/Island	Direction
Start line between Mark 1 and flag pole with orange flag on clubhouse. Mark 2 denotes inner distance mark.	South to North
Great Cumbrae	Leave to Port
Hun3	Leave to Port
O	Leave to Port
No38	Leave to Port
between Mark 1 and flag pole with blue flag on clubhouse	South to North

COURSE 2 South About Great Cumbrae	
Mark/Island	Direction
Start line between Mark 1 and flag pole with orange flag on clubhouse. Mark 2 denotes inner distance mark.	North to South
Great Cumbrae	Leave to Starboard
No38	Leave to Starboard
O	Leave to Starboard
Hun3	Leave to Starboard
between Mark 1 and flag pole with blue flag on clubhouse	North to South

Catamarans and Dinghies complete 1 Lap, unless shortened.



Marks (all positions are approximate)	
"O" Pink Inflatable Race Mark	N55°47.63 W04°55.18
"Hun3" Navigation Buoy (Red)	N55°47.60, W04°53.51
"No38" South Cardinal Buoy	N55°44.43, W04°57.13
"1" Pink Inflatable Race Mark	West of LYH
"2" Yellow Inner Distance Mark	West of LYH

Appendix 3 To LRF Dinghies and Catamarans SIs 2025

DINGHY & CATAMARAN ALTERNATIVE COURSES SUNDAY ONLY TO BE USED IN ADVERSE WEATHER

COURSE 3

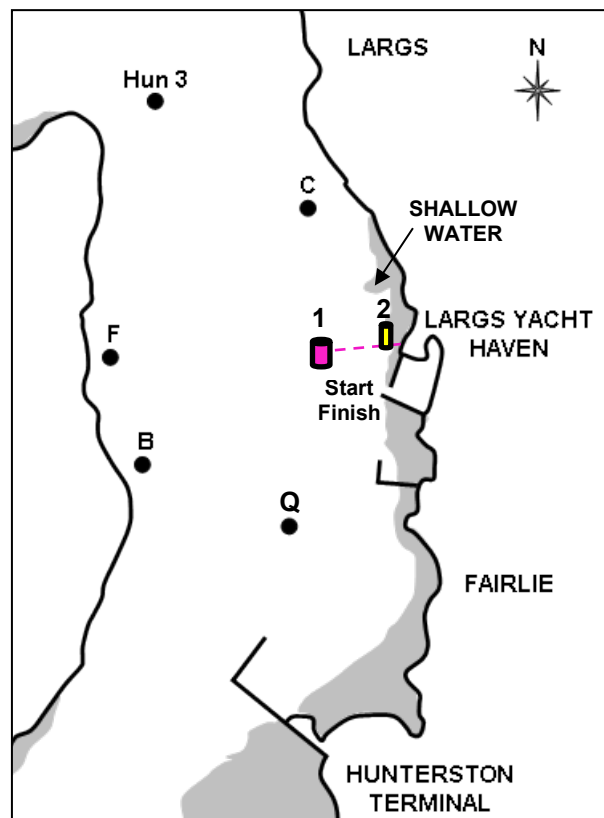
Start-C-Hun3-F-B-Hun5-Start/Finish-C-Hun3-F-B-Hun5-Finish

ALL MARKS TO BE PASSED TO PORT

Course 4

Start-Hun5-B-F-Hun3-C-Start/Finish-Hun5-C-K-Finish

ALL MARKS TO BE PASSED TO STARBOARD



Mark	Description
1	Pink Inflatable Race Mark
2	Yellow Inner Distance Mark
B	Orange can off Ballochmartin Bay
F	Orange can off Fairhaven House
Q	"Q" FYC Orange Race Mark (in place of HUN 5)
K	Orange/Black can off Largs SC
C	Orange can off Cairnies Quay
Hun3	Red Navigation Buoy 'Hun3'

OUR SPONSORS & PARTNERS

