

**DINGHY AND CATAMARAN  
SAILING INSTRUCTIONS**

The Organising Authority (OA) is Largs Sailing Club (LSC)

The notation '[NP]' in a rule means that a boat may not protest another boat for breaking that rule. This changes RRS 60.1(a).

**1 RULES**

- 1.1 The Event will be governed by the rules as defined in The Racing Rules of Sailing (RRS).  
1.2 The prescriptions of the RYA available at [www.rya.org.uk](http://www.rya.org.uk) will apply.

1.3 [NP] [DP] COVID Statement

By taking part in any of the events covered by this notice of race, each competitor agrees and acknowledges that they are responsible for complying with any regulations in force from time to time in respect of COVID-19 and for complying with **Largs Sailing Club's COVID-19 procedures**. Competitors and support persons shall comply with any reasonable request from an event official. Failure to comply may be misconduct. Reasonable actions by event officials to implement COVID-19 guidance, protocols or legislation, even if they later prove to have been unnecessary, are not improper actions or omissions. A breach of this rule shall not be grounds for protest by another boat. This changes RRS 60.1(a).

**2 CHANGES TO SAILING INSTRUCTIONS**

Any change to the sailing instructions will be posted not less than one hour before the first start of the day it will take effect, except that any change to the schedule of races will be posted by 2000 on the day before it will take effect.

**3 COMMUNICATIONS WITH COMPETITORS**

- 3.1 The online official noticeboard is located at the LSC website Regatta Festival page: <https://largsregattafestival.com/lrf-noticeboard>. There will be no physical notice board.  
3.2 [DP] While racing, except in an emergency, a boat shall not make voice or data transmissions and shall not receive voice or data communication that is not available to all boats.  
3.3 A WhatsApp Group may be used to provide additional event information, details of how to join the group can be seen at Appendix 3. Note that the official means of communicating racing information is via the official notice board and not all information may be posted to the WhatsApp Group

**4 CODE OF CONDUCT**

[DP] Competitors and support persons shall comply with reasonable requests from race officials.

**5 SIGNALS MADE ASHORE**

Signals made ashore will be displayed from the flagpole located on the Northwest corner of the Largs SC balcony.

**6 SCHEDULE**

- 6.1 Registration will be open from 0930 - 1130 on Saturday 27 August and 0900-0930 on Sunday 28 August (for those competing on Sunday only). Competitors shall register and receive a tally number from the desk located in the downstairs lobby of Largs Sailing Club.  
6.2 Competitor's briefing will take place at 1100 on Saturday 27 August.

<b>Class</b>	<b>Total Number of Races</b>	<b>No Of Races Scheduled Saturday 27 Aug</b>	<b>No Of Races Scheduled Sunday 28 Aug</b>
Slow Handicap Dinghy	5	4	1
Fast Handicap Dinghy	5	4	1
Catamaran	5	4	1

- 6.3 The scheduled time of the first warning signal on Saturday is not before 1155 and on Sunday not before 1025.
- 6.4 The Fast and Slow Handicap Dinghy Class divisions will be published on the Official Notice Board <https://largregattafestival.com/lrf-noticeboard> after the closing date for entries.

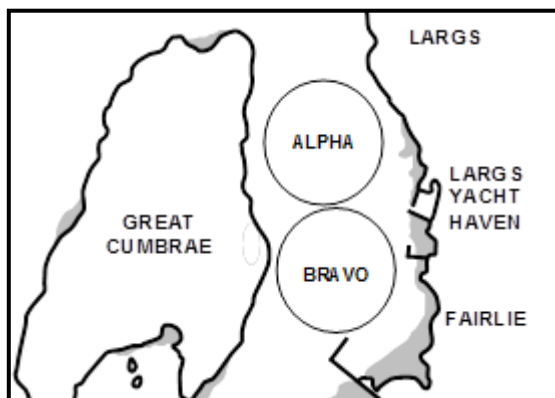
**7 CLASS FLAGS**

7.1 Class flags are as follows:

Class	Flag
Slow Handicap Dinghy	G (Golf)
Fast Handicap Dinghy	J (Juliet)
Catamarans	Q (Quebec)

**8 RACING AREAS**

8.1 SATURDAY: Racing for Dinghies and Catamarans will take place in the Largs Channel. The Fast Handicap Dinghy and Catamaran Classes will race on course Alpha (approximately located to the North of the LYH entrance), The Slow Handicap Dinghy Class will race on course Bravo (approximately located to the South of the LYH entrance).



8.2 SUNDAY: Racing will take place in the waters surrounding Great Cumbrae Island (unless the extreme weather course in Appendix 3 is used in which case racing will be in the Largs Channel).

The Fast Handicap Dinghy, Slow Handicap Dinghy and Catamaran classes will all use the same start/finish line and the same CV which will be located in the Largs Channel. The Dinghy and Catamaran CV will display Flag D to differentiate it from the Keelboat CV which may also be located in the Largs Channel (the Keelboat CV will display flag K).

**9 THE COURSES**

- 9.1 The diagram(s) in the appendices to these SIs show the courses, the order in which marks are to be passed, and the side on which each mark is to be left.
- 9.2 Saturday's courses are described at Appendix 1 to these SIs. The course to be sailed on Saturday will be indicated by a Black Number on a White background.
- 9.3 Sunday's courses are described at Appendix 2 to these SIs (or Appendix 3 to these SIs - which will only be used in adverse weather conditions) The course to be sailed on Sunday will be indicated by a Black Letter on a Green background.

**10 MARKS**

10.1 Marks used are as described in the Appendices.

**11 OBSTRUCTIONS**

The entrance to the Largs Yacht Haven is designated as an obstruction; boats shall not pass between the red and white striped safe water mark and the entrance to the Marina.

## 12 THE START

- 12.1 Races will be started using RRS 26 with the warning signal made 5 minutes before the starting signal. The warning signal for each succeeding class shall be made with or after the starting signal of the preceding class.
- 12.2 The starting line is between a staff or mast displaying an orange flag on the signal CV at the starboard end and the port-end starting mark, a blue inflatable race mark.
- 12.3 The normal starting sequence shall not be interrupted by a general recall. The new warning signal for the class which has had a general recall shall be five minutes before its starting signal and shall normally be displayed at the starting signal of the last class to start correctly in the schedule. If more than one class is subject to a general recall, the second of these classes shall start five minutes after the first and so on. If a class subject to general recall is the last or only class to start, the next signal after the general recall shall be the new warning signal. This changes RRS 29.2
- 12.4 [DP][NP] Boats whose warning signal has not been made shall avoid the starting area during the starting sequence for other races.

## 13 CHANGE OF THE NEXT LEG OF THE COURSE

Minor mark moves (up to approximately 100m) may be made, on the first lap only, without signalling the change. This changes RRS 33.

## 14 THE FINISH

- 14.1 SATURDAY: The finishing line is between a staff or mast displaying an S flag on the signal CV at the starboard end and the port-end starting mark (blue inflatable).
- 14.2 SUNDAY: The finishing line is between a staff or mast displaying a Blue flag on the signal CV at the starboard end and the port-end starting mark (blue inflatable). All Dinghy and Catamaran classes will finish at the same finishing line on Sunday (normally at the same location and using the same CV as the starting line) unless the course is shortened using RRS 32.2 at a mark of the course.

On Sunday in addition to RRS 32.2, the Round Cumbrae Race may be shortened at approximately 90 degrees to an island and may use a landmark for reference. Boats shall finish by passing between the CV displaying flag S and the island and/or landmark.

## 15 PENALTY SYSTEM

- 15.1 The Two-Turns Penalty is replaced by the One-Turn Penalty. This changes RRS 44.1
- 15.2 The Post-Race Penalty and RYA Arbitration of the RYA Rules Disputes Procedures shall apply (for full information on the procedures, go to [www.rya.org.uk/go/rules](http://www.rya.org.uk/go/rules) ). The outcome of an RYA Arbitration can be referred to a protest committee, but an arbitration cannot be reopened or appealed.

## 16 TIME LIMITS AND TARGET TIMES

- 16.1 SATURDAY: Time limits and target times for the lead boat for Saturday's races are as follows:

<i>Class</i>	<i>Race Target Time</i>	<i>Race Time Limit</i>	<i>Finishing Window</i>
All Classes	40 min	90 min	30 min

The Finishing Window is the time for boats to finish after the first boat in their class sails the course and finishes. Boats failing to finish within the Finishing Window, and not subsequently retiring, penalized or given redress, will be scored Time Limit Expired (TLE) without a hearing. A boat scored TLE shall be scored points for the finishing place one more than the points scored by the last boat that finished within the Finishing Window. This changes RRS 35, A5.1, A5.2 and A10.

- 16.2 SUNDAY: Time limit for all competitors on the Sunday race is 1600hrs. Boats that fail to finish within the time limit will be scored TLE without a hearing. This changes RRS 35, A5.1, A5.2 and A10.

## 17 HEARING REQUESTS

- 17.1 The Post-Race Penalty and RYA Arbitration of the RYA Rules Disputes Procedures shall apply (for full information on the procedures, go to [www.rya.org.uk/go/rules](http://www.rya.org.uk/go/rules) ). The outcome of an RYA Arbitration can be referred to a protest committee, but an arbitration cannot be reopened or appealed.
- 17.2 The protest time limit is 60 minutes after the last boat finishes the last race of the day or the race committee signals no more racing today, whichever is later.
- 17.3 Hearing request forms are available upstairs in Largs Sailing Club.

- 17.4 The Protest Committee Chairman will provide a list, no later than 30 minutes after the protest time limit, to inform competitors of hearings in which they are parties or named as witnesses, and the location of where hearings will be held.

## **18 SCORING**

- 18.1 One race is required to be completed to constitute a series.
- (a) When fewer than 4 races have been completed, a boat's series score will be the total of her race scores.
  - (b) When 4 or more races have been completed, a boat's series score will be the total of her race scores excluding her worst score.
- 18.2 Finishing positions shall take into account the number of laps sailed and results shall be calculated on an average lap basis using the Portsmouth Yardstick rating system for dinghies and the SCHRS rating system for catamarans.
- 18.3 If conditions dictate, the RC may, at their discretion, take the results of a race from the times recorded of a previous round. Subsequent retirements or rule infringements shall be disregarded. The decision by the race committee to use this procedure or not to use it shall not be grounds for requesting redress. This changes RRS rule 28.1 and RRS Rule 60.1(b).

## **19 SAFETY REGULATIONS**

- 19.1 [NP] [DP] A tally system will be used during the Regatta; To check-out competitors shall collect a wristband before entering the slipway indicating that they intend to go afloat. At the end of racing (or retiring) the wristband must be handed back to the same point from which it was collected. Tallies shall be returned no later than the protest time limit. Competitors that fail to tally correctly may be subject to protest by the RC, any points penalty shall be applied to the first race completed on the day the infringement took place. This changes RRS Rule 63.1.
- 19.2 Adequate personal buoyancy shall be worn by competitors at all times whilst afloat, except briefly while changing or adjusting clothing or personal equipment. A wetsuit or dry suit is not adequate personal buoyancy; this changes RRS Rule 40.
- 19.3 [NP] [DP] A boat that retires from a race shall notify the race committee immediately on coming ashore.
- 19.4 [NP] [DP] Clydeport Operations Limited Restrictions.

NARROW CHANNELS. Attention is drawn to the International Regulations for the prevention of collisions at sea, 1972. Particular notice shall be taken of Rule 9b which states that "a vessel of less than 20m in length or a sailing vessel shall not impede the passage of a vessel which can safely navigate only within a narrow channel or fairway". Whilst racing or on a passage in the Firth of Clyde north of Cumbrae Head yachts must regard any such recommended channels as a "Narrow Channel" within the meaning of the IRPCS 9b.

Furthermore, Clydeport Operations Limited has decreed that any waters in the Firth of Clyde where vessels by virtue of their size, draught, speed or proximity to land, hazards and other vessels are unable to manoeuvre freely must be regarded as a "Narrow Channel". Whilst racing any yacht which is unable for reasons of lack of wind or other cause, to sail clear of a large power-driven vessel shall start her engine and/or paddle in order to clear and thereafter shall report full details to the Race Committee.

Competitors are reminded of the Clydeport Operations Limited Byelaw which prohibits yachts and other craft from manoeuvring within 100m of any ferry terminal. Particular regard should be paid to this when in the vicinity of the Caledonian Macbrayne facilities at Largs and Cumbrae

## **20 REPLACEMENT OF CREW OR EQUIPMENT**

- 20.1 Substitution of the helm during the regatta is not permitted. Replacement helms will be scored as a separate entry unless written permission for the substitution is obtained from the RC.
- 20.2 Substitution of the registered boat during the regatta will be scored as a separate entry unless written permission is obtained from the RC. It is the responsibility of the competitor making the substitution to ensure that this is communicated to the RC.

## **21 EQUIPMENT AND MEASUREMENT CHECKS**

- 21.1 A boat or equipment may be inspected at any time by a member of the Race Committee for compliance with the class rules and sailing instructions
- 21.2 [DP] [NP] Sponsor's stickers shall be displayed on every competing boat on the hull at the bow just below the deck line.

21.3 The fact that race officials may conduct inspections of a boat does not reduce the responsibilities of each competitor set out in the event documentation.

**22 SUPPLIED BOATS – Not applicable at this event.**

**23 OFFICIAL VESSELS – Not applicable at this event.**

**24 SUPPORT TEAMS – Not applicable at this event.**

## **25 TRASH DISPOSAL**

Trash may be placed aboard official vessels.

**26 BERTHING – Not applicable at this event.**

**27 HAUL OUT RESTRICTIONS – Not applicable at this event.**

**28 DIVING EQUIPMENT AND PLASTIC POOLS – Not applicable at this event.**

## **29 PRIZES**

29.1 Prizes will be awarded to the first three boats in each class for the series. The number of prizes awarded may vary, at the discretion of the organising authority, depending on the number of entries within each class.

29.2 The ENTERPRISE AYRSHIRE ROSEBOWL will be awarded to the boat that, in the opinion of the Largs Regatta Festival Committee, has produced the best overall performance of all boats during Largs Regatta Festival's Cumbraes Weekend.

29.3 The LARGS 'LIFEBOAT CREW' TROPHY for the dinghy or catamaran of the Event will be awarded to the dinghy or catamaran which, in the opinion of the Largs Regatta Festival Committee has produced the best performance during Largs Regatta Festival's Cumbraes Weekend.

29.4 The OA may award other prizes at its discretion.

## **30 RISK STATEMENT**

30.1 Rule 3 of the Racing Rules of Sailing states: "The responsibility for a boat's decision to participate in a race or to continue racing is hers alone."

30.2 Sailing is by its nature an unpredictable sport and therefore inherently involves an element of risk. By taking part in the event, each competitor agrees and acknowledges that:

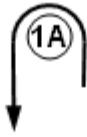
- a) They are aware of the inherent element of risk involved in the sport and accept responsibility for the exposure of themselves, their crew and their boat to such inherent risk whilst taking part in the event;
- b) They are responsible for the safety of themselves, their crew, their boat and their other property whether afloat or ashore;
- c) They accept responsibility for any injury, damage or loss to the extent caused by their own actions or omissions;
- d) Their boat is in good order, equipped to sail in the event and they are fit to participate;
- e) The provision of a race management team, patrol boats and other officials and volunteers by the event organiser does not relieve them of their own responsibilities;
- f) The provision of patrol boat cover is limited to such assistance, particularly in extreme weather conditions, as can be practically provided in the circumstances;
- g) It is their responsibility to familiarise themselves with any risks specific to this venue or this event drawn to their attention in any rules and information produced for the venue or event and to attend any safety briefing held for the event.

## **31 INSURANCE**

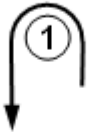
Each participating boat shall be insured with valid third-party liability insurance with a minimum cover of £3,000,000 per event.



**SATURDAY: ALPHA Race Area Only**

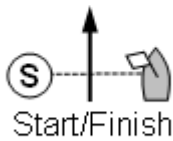


**Course 1**



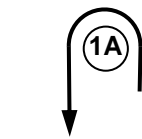
**Catamaran**

Start/Finish – 1A - 3 – Repeat until S Flag is displayed



**Fast Handicap Dinghy**

Start/Finish – 1 - 3 – Repeat until S Flag is displayed

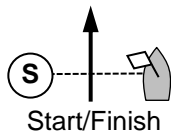


**Course 2**



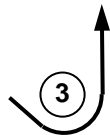
**Catamaran**

Start/Finish – 1A - 3 – Repeat until S Flag is displayed



**Fast Handicap Dinghy**

Start/Finish – 1 - 2 - 3 – Repeat until S Flag is displayed

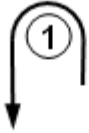


**Marks**

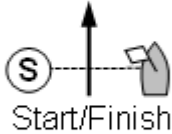
- 1A Pink Inflatable
- 1, 2, 3 Yellow Inflatable
- S Blue Inflatable

Do not pass through the start/finish line when sailing downwind (ie when sailing from marks 1, 1A or 2 to mark 3)

**SATURDAY: BRAVO Race Area Only**



**Course 1**

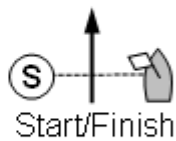


**Slow Handicap Dinghy**

Start/Finish – 1 - 3 – Repeat until S Flag is displayed



**Course 2**



**Slow Handicap Dinghy**

Start/Finish – 1 - 2 - 3 – Repeat until S Flag is displayed



**Marks**

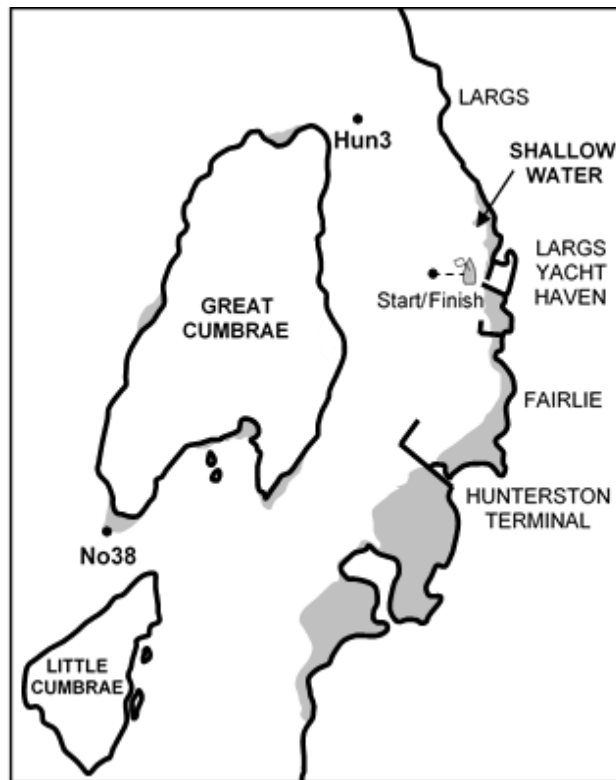
1,2,3 Pink Inflatable  
S Blue Inflatable

Do not pass through the start/finish line when sailing downwind (ie when sailing from marks 1, 1A or 2 to mark 3)

**SUNDAY: DINGHY AND CATAMARAN ROUND CUMBRAES COURSES**

<b>COURSE C</b> <i>North About Great Cumbrae</i>	
<i>Mark/Island</i>	<i>Direction</i>
Start/Finish Line	South to North
Great Cumbrae	Pass to Port
Hun3	Pass to Port
No38	Pass to Port
Start/Finish Line	South to North

<b>COURSE D</b> <i>South About Great Cumbrae</i>	
<i>Mark/Island</i>	<i>Direction</i>
Start/Finish Line	North to South
Great Cumbrae	Pass to Starboard
No38	Pass to Starboard
Hun3	Pass to Starboard
Start/Finish Line	North to South



<i>Marks</i> <i>( positions are approximate)</i>	<i>Position</i>
"Hun3" Navigation Buoy (Red)	N55°47.60, W04°53.51
"No38" South Cardinal Buoy	N55°44.43, W04°57.13
"Start/Finish" Blue Inflatable Race Mark	West of LYH

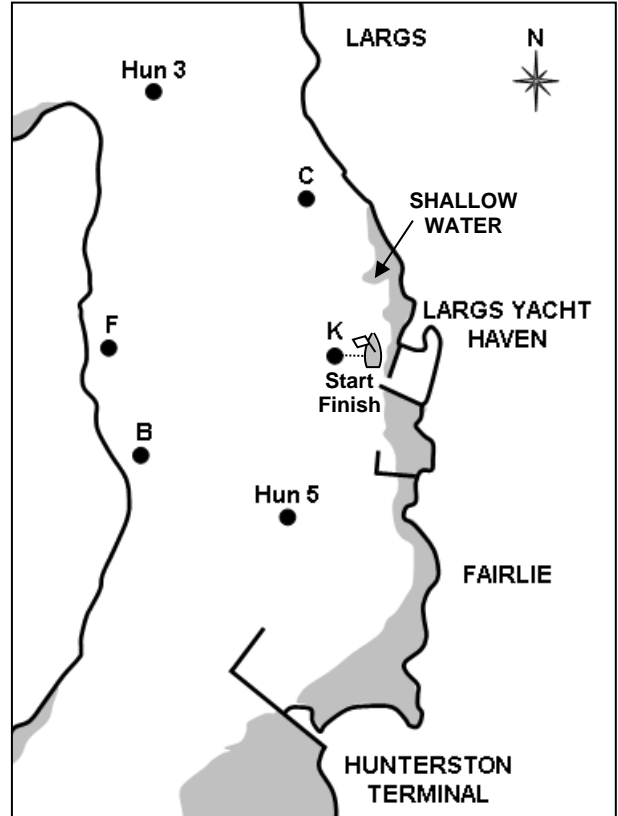


**SUNDAY: DINGHY & CATAMARAN ALTERNATIVE COURSES**  
**ONLY TO BE USED IN ADVERSE WEATHER**

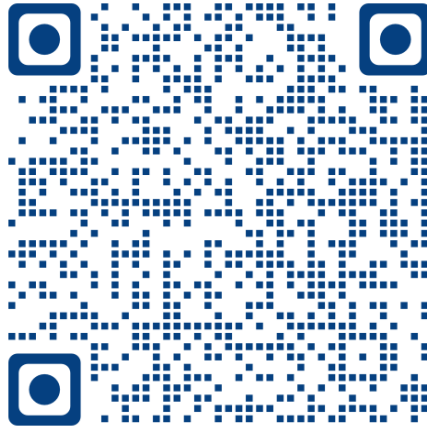
**COURSE X**  
 Start-C-Hun3-F-B-Hun5-Start/Finish-C-Hun3-F-B-Hun5-Finish  
 ALL MARKS TO BE PASSED TO PORT

**Course Y**  
 Start-Hun5-B-F-Hun3-C-Start/Finish-Hun5-C-K-Finish  
 ALL MARKS TO BE PASSED TO STARBOARD

Mark	Description
B	Orange can off Ballochmartin Bay
F	Orange can off Fairhaven House
Hun5	Green navigation Buoy "Hun5"
K	Orange/Black can off Largs SC
C	Orange can off Cairnies Quay
Hun3	Red Navigation Buoy 'Hun3"
<i>Note that the blue inflatable start/finish mark is replaced by mark K if this alternative course is used.</i>	



Please scan the QR code below to join the “*Largs Regatta Festival 22*” WhatsApp Group



***Note that the official means of communicating racing information  
is via the official notice board***

***Not all information may be posted to the WhatsApp Group***

