



Largs Regatta Festival 28/29 August 2021

SAILING INSTRUCTIONS

The Organising Authority (OA) is Largs Sailing Club

The notation '[NP]' in a rule means that a boat may not protest another boat for breaking that rule. This changes RRS 60.1(a).
The notation '[DP]' in a rule means that the penalty for a breach of the rule may, at the discretion of the protest committee, be less than disqualification

1 RULES

- 1.1 The Event will be governed by the rules as defined in The Racing Rules of Sailing (RRS).
- 1.2 The prescriptions of the RYA available at www.rya.org.uk will apply.
- 1.3 [NP] [DP] COVID Statement

By taking part in any of the events covered by this notice of race, each competitor agrees and acknowledges that they are responsible for complying with any regulations in force from time to time in respect of COVID-19 and for complying with **Largs Sailing Club's COVID-19 procedures**. Competitors and support persons shall comply with any reasonable request from an event official. Failure to comply may be misconduct. Reasonable actions by event officials to implement COVID-19 guidance, protocols or legislation, even if they later prove to have been unnecessary, are not improper actions or omissions. A breach of this rule shall not be grounds for protest by another boat. This changes RRS 60.1(a).

2 CHANGES TO SAILING INSTRUCTIONS

Any change to the sailing instructions will be posted not less than one hour before the first start of the day it will take effect, except that any change to the schedule of races will be posted by 2000 on the day before it will take effect.

3 COMMUNICATIONS WITH COMPETITORS

- 3.1 The online official noticeboard is located at the LSC website Regatta Festival page: <https://largsregattafestival.com/noticeboard> . There will be no physical notice board.
- 3.2 [DP] While racing, except in an emergency, a boat shall not make voice or data transmissions and shall not receive voice or data communication that is not available to all boats.
- 3.3 Entrants are to register and receive a tally number from the desk located in the downstairs lobby of Largs Sailing Club. The registration will be open from 0930 - 1200 on Saturday 12 June.
- 3.4 Competitor's briefing will take place at 1100 on Saturday 12 June.

4 CODE OF CONDUCT

[DP] Competitors and support persons shall comply with reasonable requests from race officials.

5 SIGNALS MADE ASHORE

Signals made ashore will be displayed from the flagpole located on the Northwest corner of the Largs SC balcony.

6 SCHEDULE OF RACES

<i>Class</i>	<i>Total Number of Races</i>	<i>No Of Races Scheduled Saturday 28 Aug</i>	<i>No Of Races Scheduled Sunday 29 Aug</i>
Catamarans	5	4	1
Fast Handicap Dinghy PN less than 1050	5	4	1
Slow Handicap Dinghy PN 1051 up to 1366	5	4	1

- 6.1 The scheduled time of the first warning signal on Saturday is not before 1227 and on Sunday not before 1027.
- 6.2 On Sunday no warning signal shall be made after 1500.
- 6.3 The Scottish and Northern Singlehander Class and Handicap Dinghies will combine to race as two Handicap fleets with a class split that will be determined once entries have been received.

7 CLASS FLAGS AND START ORDER

- 7.1 Class flags and order of start by class are as follows:

Class	Flag
Slow handicap	E (Echo)
Fast Handicap	F (Foxtrot)
Catamarans	G (Golf)

8 RACING AREAS

Racing for Dinghies and Catamarans will take place in the Largs Channel and the waters surrounding Great Cumbrae Island.

9 THE COURSES

- 9.1 The diagram and details of the courses for Saturday are at **Appendix 1**.
- 9.2 The diagrams of the course for Sunday are at **Appendix 2 & 3(Sunday)**, the course chosen for the day will be displayed on the CV in Black Letters on a Green background.
- 9.3 The courses have a specified number of laps and will run unless the Race Committee shorten the course. The Race Committee may decide to alter the number of laps depending on weather conditions.

10 MARKS

- 10.1 Marks used are described in **Appendix 1 (Saturday), Appendix 2 & 3 (Sunday)**
- 10.2 The race committee may substitute marks of different colours or shapes to those specified in the course diagrams.

11 OBSTRUCTIONS

The entrance to the Largs Yacht Haven is designated as an obstruction; boats shall not pass between the red and white striped safe water mark and the entrance to the Marina.

12 THE START

12.1 Races will be started from the committee boat as shown in the table below.

<i>Minutes before starting Signal</i>	<i>Visual signal</i>	<i>Sound Signal</i>	<i>Means</i>
3	Class Flag	One	Warning Signal
2	P, I, Z, Z with I, U or Black Flag	One	Preparatory Signal
1	Preparatory flag removed	One long	One minute
0	Class Flag Removed	One	Starting Signal

12.2 The warning signal for each succeeding class shall be made with or after the starting signal of the preceding class.

12.3 The starting lines are between the Committee Vessel staff/mast displaying an Orange Flag and a Blue buoy, located as shown in **Appendix 1 (Saturday), Appendix 2 & 3 (Sunday)**

12.4 [DP] Boats whose warning signal has not been made shall avoid the starting area during the starting sequence for other races.

12.5 **INDIVIDUAL RECALL:** When at a boat's starting signal any part of her hull is on the course side of the starting line or she must comply with rule 30.1, the race committee shall promptly display the **Flag X with one sound**. The flag shall be displayed until the hull of each such boat has been completely on the pre-start side of the starting line or one of its extensions until all such boats have complied with Rule 30, but no later than two minutes after the starting signal or one minute before any later starting signal, whichever is earlier. If rule 29.2, 30.3 or 30.4 applies this rule does not. This changes RRS 29.1.

12.6 **GENERAL RECALL:** When at the starting signal the race committee is unable to identify boats that are on the course side of the starting line or to which RRS rule 30 applies, or there has been an error in the starting procedure, the race committee may signal a general recall (by displaying the First Substitute along with two sounds). The First Substitute will be removed at the next class one minute signal or in the case of the last class in the start sequence one minute before the new start warning signal. This changes RRS 29.2

12.7 The normal starting sequence shall not be interrupted by a general recall. The warning signal for the class which has had a general recall shall be three minutes before its starting signal and shall normally be displayed at the starting signal of the last class to start correctly in the schedule. If more than one class is subject to a general recall, the second of these classes shall start three minutes after the first and so on. If a class subject to general recall is the last or only class to start, the next signal after the general recall shall be the new warning signal. This changes RRS 29.2

13 CHANGE OF THE NEXT LEG OF THE COURSE

13.1 Minor mark moves (up to approximately 100m) may be made, on the first lap only, without signalling the change. This changes RRS 33.

14 THE FINISH

- 14.1 For Saturday racing, when Flag S is displayed with Class Flag(s), boats shall finish the race when they pass through the finish line at the end of their current lap.
- 14.2 For Saturday racing, when races are finished, the finishing line will be between the Committee Vessel staff/mast displaying the Blue Flag and the Blue mark, (see course diagrams). Boats shall pass through the finish line from the direction of the previous mark - See RRS definition *Finish*.
- 14.3 For Saturday racing, if no boat within a class finishes within the time limit, the times of the previous round completed by the leading boat may be used to calculate results. Subsequent retirements or rule infringements shall be disregarded. The decision by the race committee to use this procedure or not to use it shall not be grounds for requesting redress. This changes RRS rule 28.1 and RRS Rule 60.1(b).
- 14.4 All classes will finish at the same finishing line on Sunday, between the Blue Mark and the finishing Committee Vessel, except when the course is shortened under SI 13.2.

15 PENALTY SYSTEM

- 15.1 The Two-Turns Penalty is replaced by the One-Turn Penalty. This changes RRS 44.1
- 15.2 The Post-Race Penalty and RYA Arbitration of the RYA Rules Disputes Procedures shall apply (for full information on the procedures, go to www.rya.org.uk/go/rules). The outcome of an RYA Arbitration can be referred to a protest committee, but an arbitration cannot be reopened or appealed.

16 TIME LIMITS AND TARGET TIMES

- 16.1 Time limits for all competitors and target times for the lead boat for Saturday racing are as follows:

<i>Class</i>	<i>Race Target Time</i>	<i>Race Time Limit</i>	<i>Finishing Window</i>
All Classes	40 min	90 min	30 min

- 16.2 The Finishing Window is the time for boats to finish after the first boat in their class sails the course and finishes. Boats failing to finish within the Finishing Window, and not subsequently retiring, penalized or given redress, will be scored Time Limit Expired (TLE) without a hearing. A boat scored TLE shall be scored points for the finishing place one more than the points scored by the last boat that finished within the Finishing Window. This changes RRS 35, A5.1, A5.2 and A10.
- 16.3 Time limit for all competitors on the Sunday race is 1600hrs boats that fail to finish before the time limit will be scored TLE without a hearing. This changes RRS 35, A5.1, A5.2 and A10.

17 HEARING REQUESTS

- 17.1 The Post-Race Penalty and RYA Arbitration of the RYA Rules Disputes Procedures shall apply (for full information on the procedures, go to www.rya.org.uk/go/rules). The outcome of an RYA Arbitration can be referred to a protest committee, but an arbitration cannot be reopened or appealed.
- 17.2 The protest time limit is 60 minutes after the last boat finishes the last race of the day or the race committee signals no more racing today, whichever is later.
- 17.3 Hearing request forms are available from the race officer.
- 17.4 The race officer will provide a list, no later than 30 minutes after the protest time limit, to inform competitors of hearings in which they are parties or named as witnesses.

18 SCORING.

- 18.1 Finishing positions shall take into account the number of laps actually sailed and results shall be calculated on an “average lap” basis using the Portsmouth Yardstick rating system for dinghies and the SHCRS rating system for Catamarans.
- 18.2 If conditions dictate, the Race Committee may, at their discretion, take the results of a race from the times recorded of a previous round.
- 18.3 One race is required to be completed to constitute a series.
- a) When 3 races or less have been completed, a boat's series score will be the total of her race scores.
 - b) When from 4 or more races have been completed, a boat's series score will be the total of her race scores excluding her worst score

19 SAFETY REGULATIONS

- 19.1 [NP] [DP] A tally system will be used during the Regatta; To check-out competitors shall collect a wristband before entering the slipway indicating that they intend to go afloat. At the end of racing (or retiring) the wristband must be handed back to the same point from which it was collected (i.e., the slipway used for launching for the relevant class). The ashore hand in shall be made no later than the protest time limit. Competitors that fail to tally correctly may be subject to protest by the Race Committee, the Protest Committee may impose a penalty that is less than DSQ for boats that have been found to infringe, any points penalty shall be applied to the first race completed on the day the infringement took place. This changes RRS Rule 63.1.
- 19.2 Adequate personal buoyancy shall be worn by competitors at all times whilst afloat, except briefly while changing or adjusting clothing or personal equipment. A wetsuit or dry suit is not adequate personal buoyancy; this changes RRS Rule 40.
- 19.3 [NP] [DP] A boat that retires from a race shall notify the race committee immediately on coming ashore.
- 19.4 [NP] [DP] Clydeport Operations Limited Restrictions.

NARROW CHANNELS. Attention is drawn to the International Regulations for the prevention of collisions at sea, 1972. Particular notice shall be taken of Rule 9b which states that “a vessel of less than 20m in length or a sailing vessel shall not impede the passage of a vessel which can safely navigate only within a narrow channel or fairway”. Whilst racing or on a passage in the Firth of Clyde north of Cumbrae Head yachts must regard any such recommended channels as a “Narrow Channel” within the meaning of the IRPCS 9b.

Furthermore, Clydeport Operations Limited has decreed that any waters in the Firth of Clyde where vessels by virtue of their size, draught, speed or proximity to land, hazards and other vessels are unable to manoeuvre freely must be regarded as a “Narrow Channel”. Whilst racing any yacht which is unable for reasons of lack of wind or other cause, to sail clear of a large power-driven vessel shall start her engine and/or paddle in order to clear and thereafter shall report full details to the Race Committee.

Competitors are reminded of the Clydeport Operations Limited Byelaw which prohibits yachts and other craft from manoeuvring within 100m of any ferry terminal. Particular regard should be paid to this when in the vicinity of the Caledonian Macbrayne facilities at Largs and Cumbrae

20 REPLACEMENT OF CREW OR EQUIPMENT

- 20.1 Substitution of the helm during the regatta will be scored as a separate entry unless written permission is obtained from the Race Committee.

- 20.2 Substitution of the registered boat during the regatta will be counted as a separate entry unless written permission is obtained from the Race Committee. It is the responsibility of the competitor making the substitution to ensure that this is communicated to the Race Committee.

21 EQUIPMENT AND MEASUREMENT CHECKS

- 21.1 A boat or equipment may be inspected at any time by a member of the Race Committee for compliance with the class rules and sailing instructions
- 21.2 [DP] [NP] Sponsor's stickers must be displayed on every competing boat on the hull at the bow just below the deck line.
- 21.3 The fact that race officials may conduct inspections of a boat does not reduce the responsibilities of each competitor set out in the event documentation.

22 SUPPLIED BOATS – Not applicable at this event.

23 OFFICIAL VESSELS – Not applicable at this event.

24 SUPPORT TEAMS – Not applicable at this event.

25 TRASH DISPOSAL

Trash may be placed aboard official vessels.

26 BERTHING – Not applicable at this event.

27 HAUL OUT RESTRICTIONS – Not applicable at this event.

28 DIVING EQUIPMENT AND PLASTIC POOLS – Not applicable at this event.

29 PRIZES

- 29.1 Prizes will be awarded to the first three boats in each Class for the Series. The number of prizes awarded may vary, at the discretion of the OA, depending on the number of entries within each class.
- 29.2 The ENTERPRISE AYRSHIRE ROSEBOWL will be awarded to the yacht, dinghy or catamaran that, in the opinion of the Largs Regatta Festival Committee, has produced the best overall performance of all boats during Largs Regatta Festival.
- 29.3 The LARGS 'LIFEBOAT CREW' TROPHY for the Dinghy or Catamaran of the Event will be awarded to the dinghy or catamaran which, in the opinion of the Largs Regatta Festival Committee has produced the best performance during Largs Regatta Festival.

30 RISK STATEMENT

- 30.1 Rule 3 of the Racing Rules of Sailing states: "The responsibility for a boat's decision to participate in a race or to continue racing is hers alone."
- 30.2 Sailing is by its nature an unpredictable sport and therefore inherently involves an element of risk. By taking part in the event, each competitor agrees and acknowledges that:
- They are aware of the inherent element of risk involved in the sport and accept responsibility for the exposure of themselves, their crew and their boat to such inherent risk whilst taking part in the event;
 - They are responsible for the safety of themselves, their crew, their boat and their other property whether afloat or ashore;
 - They accept responsibility for any injury, damage or loss to the extent caused by their own actions or omissions;
- 30.3 Their boat is in good order, equipped to sail in the event and they are fit to participate;
- The provision of a race management team, patrol boats and other officials and volunteers by the event organiser does not relieve them of their own responsibilities;

- e) The provision of patrol boat cover is limited to such assistance, particularly in extreme weather conditions, as can be practically provided in the circumstances;
- f) It is their responsibility to familiarise themselves with any risks specific to this venue or this event drawn to their attention in any rules and information produced for the venue or event and to attend any safety briefing held for the event.

31 INSURANCE

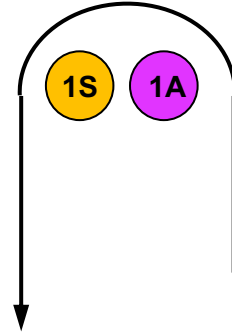
Each participating boat shall be insured with valid third-party liability insurance with a minimum cover of £3,000,000 per event.



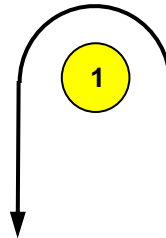
Appendix 1 To LRF Dinghies and Catamarans SIs 2021

Saturday racing Course Chart

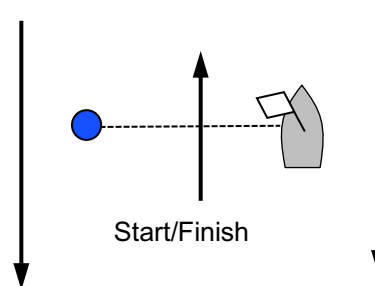
Marks 1, 2 Yellow Dumpy
Mark 1A Pink Dumpy
Mark 1S Orange pillar buoy
Start Finish Pin Blue Dumpy
CV Start Flag. Orange
CV Finish Flag. Blue



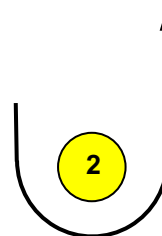
All Marks to Port
Course 1 (Cats and Fast Hcp)
Start, 1A, 1S, 2 Finish Line –
Continue until Flag S displayed



Course 2 (Slow Hcp)
Start, 1, 2, Finish Line – Continue
until Flag S displayed



**DO NOT CROSS START/
FINISH LINE ON DOWN WIND
LEG**



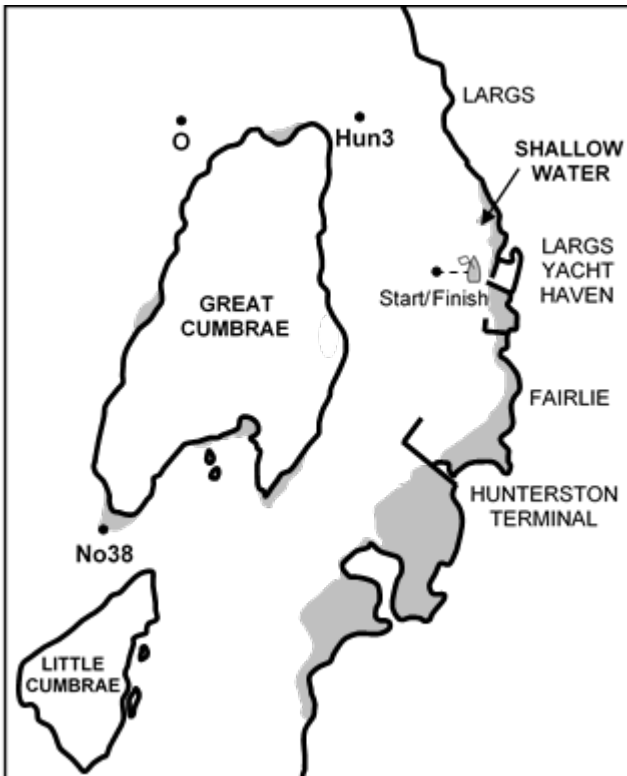
Appendix 2 To LRF Dinghies and Catamarans SIs 2021

Sunday - Round Cumbrae Courses

COURSE C <i>North About Great Cumbrae</i>	
<i>Mark/Island</i>	<i>Direction</i>
Start/Finish Line	South to North
Great Cumbrae	Leave to Port
Hun3	Leave to Port
O	Leave to Port
No38	Leave to Port
Start/Finish Line	South to North

COURSE D <i>South About Great Cumbrae</i>	
<i>Mark/Island</i>	<i>Direction</i>
Start/Finish Line	North to South
Great Cumbrae	Leave to Starboard
No38	Leave to Starboard
O	Leave to Starboard
Hun3	Leave to Starboard
Start/Finish Line	North to South

Catamarans and Dinghies complete 1 Lap, unless shortened.



Marks <i>(all positions are approximate)</i>	
"O" Pink Inflatable Race Mark	N55°47.6, W04°55.9
"Hun3" Navigation Buoy (Red)	N55°47.6, W04°53.5
"No38" South Cardinal Buoy	N55°44.4, W04°57.1
"S" Blue Inflatable Cylinder	West of LYH

DINGHY & CATAMARAN ALTERNATIVE COURSES SUNDAY
ONLY TO BE USED IN ADVERSE WEATHER

COURSE X

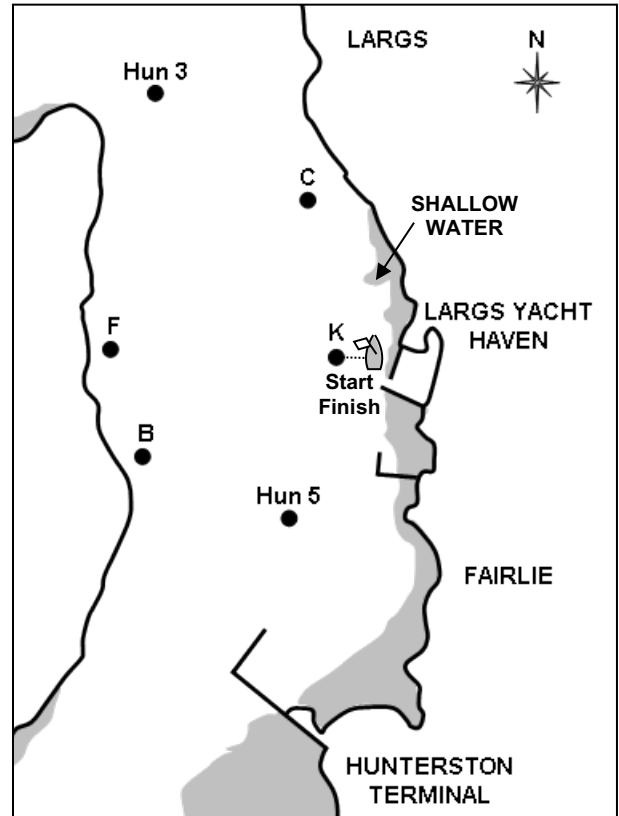
Start-C-Hun3-F-B-Hun5-Start/Finish-C-Hun3-F-B-Hun5-Finish

ALL MARKS TO BE PASSED TO PORT

Course Y

Start-Hun5-B-F-Hun3-C-Start/Finish-Hun5-C-K-Finish

ALL MARKS TO BE PASSED TO STARBOARD



Mark	Description
B	Orange can off Ballochmartin Bay
F	Orange can off Fairhaven House
Hun5	Green navigation Bouoy "Hun5"
K	Orange/Black can off Largs SC
C	Orange can off Cairnies Quay
Hun3	Red Navigation Buoy 'Hun3'

