



707 and International Etchells Scottish Championships

Saturday 30th and Sunday 31st August 2025
Largs, Ayrshire, Scotland, KA30 8EZ



SAILING INSTRUCTIONS

The Organising Authority (OA) is Fairlie Yacht Club (FYC).

The notation '[NP]' in a rule means that a boat may not protest another boat for breaking that rule. This changes RRS 60.1(a).

1 RULES

- 1.1 The Event will be governed by the Rules as defined in the Racing Rules of Sailing (RRS)
- 1.2 The 707 Class Rules available at <https://sail707.wordpress.com/class-rules/> will apply.
- 1.3 The International Etchells Class Rules available at <https://etchells.org>
- 1.4 The prescriptions of the RYA available at www.rya.org.uk will apply.

2 CHANGES TO SAILING INSTRUCTIONS

Any change to the sailing instructions will be posted by 2000 on the day before it will take effect.

3 COMMUNICATIONS WITH COMPETITORS

- 3.1 The official noticeboard is located on the Largs Regatta Festival website. www.largsregattafestival.com.
- 3.2 On the water, the Race Committee (RC) intends to monitor and communicate with competitors on VHF radio channel 72.
- 3.3 [DP] From the first warning signal until the end of the last race of the day, except in an emergency, a boat shall not make voice or data transmissions and shall not receive voice or data communication that is not available to all boats.

4 CODE OF CONDUCT

[DP] Competitors and support persons shall comply with reasonable requests from race officials.

5 SIGNALS MADE ASHORE

- 5.1 Signals made ashore will be made from the flagpole on the LSC balcony under class flag.
- 5.2 When flag AP is displayed ashore, '1 minute' is replaced with 'not less than 30 minutes' in Race Signals AP.

6 SCHEDULE OF RACES

- 6.1 Dates of Racing.

Class	Dates
707	Saturday 30 th and Sunday 31 st August 2025
Etchells	Saturday 30 th and Sunday 31 st August 2025

- 6.2 Number of Races

Class	Total Number of Races	No Of Races Scheduled Saturday	No Of Races Scheduled Sunday
707	7	4	3
Etchells	7	4	3

- 6.3 The scheduled time of the first warning signal each day is 1025.
- 6.4 To alert boats that a race or sequence of races will begin soon, the orange starting line flag will be displayed with one sound at least five minutes before a warning signal is made.
- 6.5 Etchells class will start first in the sequence followed by 707s.
- 6.6 On the last scheduled day of racing no warning signal will be made after 1500.

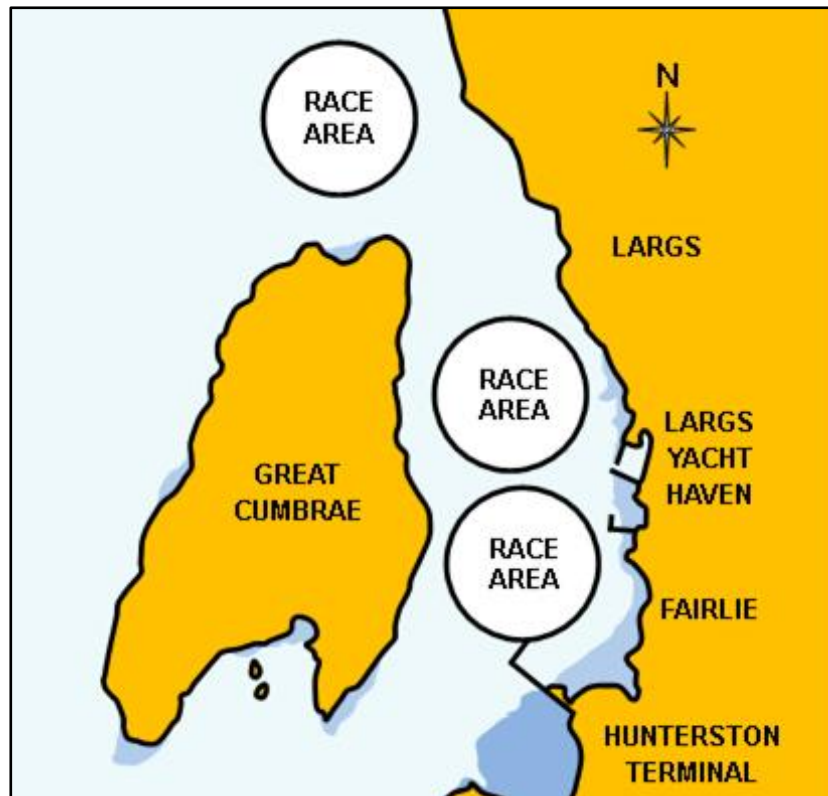
7 CLASS FLAGS

The Etchells Class Flag is Code Flag E .

The 707 Class Flag is a black 707 logo on a white background.

RACING AREAS

The preferred racing area on Saturday 30th August is in the waters off Largs Yacht Haven, to the south of the yacht haven entrance. Please note that the dinghy fleet will be racing in the northern end of the Largs Channel. The preferred racing area on Sunday 31st August is the Skelmorlie Channel to the north of Great Cumbrae. If conditions dictate the RC may relocate to the waters off Largs Yacht Haven by displaying flag L and proceeding to the new location.



8 COURSES

- 8.1 The diagram(s) in SI Addendum 1 show the course(s), including the approximate angles between legs, the order in which marks are to be passed, and the side on which each mark is to be left.
- 8.2 The course to be sailed will be indicated by yellow letters/numbers on a black background displayed on the committee vessel and announced by the Race Officer.

9 MARKS

- 9.1 Marks are as described in Addendum

10 OBSTRUCTIONS – Not applicable at this event.

11 THE START

- 11.1 Races will be started using RRS 26 with the warning signal made 5 minutes before the starting signal:
- 11.2 The starting line is between the staff or mast displaying the orange starting line flag and the start mark.
- 11.3 The starting sequence will be International Etchells followed by 707s.
- 11.4 The normal starting sequence shall not be interrupted by a general recall. The warning signal for the class which has had a general recall shall be five minutes before its starting signal and shall normally be displayed at the starting signal of the last class to start correctly in the schedule. If more than one class is subject to a general recall, the second of these classes shall start five minutes after the first and so on. If a class subject to general recall is the last or only class to start, the next signal shall be the new warning signal, which shall normally be displayed five minutes after the original starting time.

12 CHANGE OF THE NEXT LEG OF THE COURSE

Minor changes (up to 100m) to the next leg of the course may be made by moving the original mark(s) without signalling the change.

To make major changes (greater than 100m) to the next leg of the course, the race committee will lay a new mark (or move the finishing line) and remove the original mark as soon as practicable. When Mark 1 has been replaced, Mark 1a is no longer a mark of the course. It will be removed as soon as practicable. This changes RRS 33.

When in a subsequent change a new mark is replaced, it will be replaced by an original mark.

13 THE FINISH

- 13.1 The finishing line is between the mast or staff displaying the blue finishing line flag and the finish mark/dan buoy displaying a blue flag.
- 13.2 The RC may award a finishing score to a boat that is still racing by displaying to her from a committee vessel (which may be in motion) flag W. A boat so notified is no longer required to sail the course, shall stop racing and shall return to the starting area, or return ashore if there is no more racing. A finishing score under this sailing instruction will be the score she would have received had she sailed the course and finished within any time limit, without gaining or losing any place. The decision by the RC to use this procedure or not to use it shall not be grounds for requesting redress. This changes RRS Rule 28.1 and RRS Rule 60.1(b).

14 PENALTY SYSTEM

The Two-Turns Penalty is replaced by the One-Turn Penalty. This changes RRS 44.1

15 TIME LIMITS AND TARGET TIMES

<i>Class</i>	<i>Race Target Time</i>	<i>Race Time Limit</i>	<i>Finishing Window</i>
707	40min	70min	30min
Etchells	40min	70min	30min

- 15.1 The Finishing Window is the time for boats to finish after the first boat in their class sails the course and finishes. Boats failing to finish within the Finishing Window, and not subsequently retiring, penalized, or given redress, will be scored Time Limit Expired (TLE) without a hearing. A boat scored TLE shall be scored points for the finishing place one more than the points scored by the last boat that finished within the Finishing Window. This changes RRS 35, A5.1, A5.2 and A10.
- 15.2 Failure to meet the Target Time will not be grounds for redress. This changes RRS 62.1(a).

16 HEARING REQUESTRRS Appendix T will apply.

- 16.1 [NP] [DP] In addition to RRS 61.1(a) a boat intending to protest should notify the committee vessel immediately upon finishing the race or retiring and await acknowledgement.
- 16.2 Protest forms are available at the race office in downstairs in LSC. Protests shall be delivered there within the Protest Time Limit.
- 16.3 The protest time limit is 60 minutes after the last boat finishes the last race of the day or the RC signals no more racing today, whichever is later.
- 16.4 The hearings may be heard via video call unless otherwise scheduled by the protest committee. All links will be sent via email.
- 16.5 A Hearing Schedule will be posted on the Official Notice Board as soon as possible after a protest has been lodged, but not later than 60 minutes after the protest time limit to inform competitors of hearings in which they are parties or named as witnesses.

Protests will be heard in the order specified on the Hearing Schedule. Parties and witnesses are required to be available via video at the time stated on the Hearing Schedule. It is the responsibility of each party to ensure their witnesses are available at the time of the video call. Hearings will be held online using video links.

17 SCORING

- 17.1 Four races are required to be completed to constitute a series.
- (a) When fewer than 4 races have been completed, a boat's series score will be the total of her race scores.

(b) When 5 or more races have been completed, a boat's series score will be the total of her race scores excluding her worst score.

18 SAFETY REGULATIONS

[NP] [DP] A boat that retires from a race shall notify the RC at the first reasonable opportunity.

19 REPLACEMENT OF CREW OR EQUIPMENT

Substitution of competitors will not be permitted without prior written approval of the RC.

20 EQUIPMENT AND MEASUREMENT CHECKS

20.1 [DP] A boat or equipment may be inspected at any time for compliance with the class rules, notice of race and sailing instructions. The fact that race officials may conduct inspections of a boat does not reduce the responsibilities of each competitor set out in the notice of race.

20.2 [DP] When instructed by a race official on the water, a boat shall proceed to a designated area for inspection.

21 **SUPPLIED BOATS** – Not applicable at this event.

22 **OFFICIAL VESSELS** – Not applicable at this event.

23 **SUPPORT TEAMS** – Not applicable at this event.

24 TRASH DISPOSAL

Trash may be placed aboard official vessels.

25 **BERTHING** – in Largs Yacht Haven.

26 **HAUL OUT RESTRICTIONS** – Not applicable at this event.

27 **DIVING EQUIPMENT AND PLASTIC POOLS** – Not applicable at this event.

28 PRIZES

Prizes will be awarded to the first three boats; the OA may award other prizes at its discretion.

29 RISK STATEMENT

29.1 Rule 3 of the Racing Rules of Sailing states: "The responsibility for a boat's decision to participate in a race or to continue racing is hers alone."

Sailing is by its nature an unpredictable sport and therefore inherently involves an element of risk. By taking part in the event, each competitor agrees and acknowledges that:

- They are aware of the inherent element of risk involved in the sport and accept responsibility for the exposure of themselves, their crew and their boat to such inherent risk whilst taking part in the event;
- They are responsible for the safety of themselves, their crew, their boat and their other property whether afloat or ashore.
- They accept responsibility for any injury, damage or loss to the extent caused by their own actions or omissions;
- Their boat is in good order, equipped to sail in the event and they are fit to participate;
- The provision of a race management team, patrol boats and other officials and volunteers by the event organiser does not relieve them of their own responsibilities;
- The provision of patrol boat cover is limited to such assistance, particularly in extreme weather conditions, as can be practically provided in the circumstances;
- It is their responsibility to familiarise themselves with any risks specific to this venue or this event drawn to their attention in any rules and information produced for the venue or event and to attend any safety briefing held for the event.

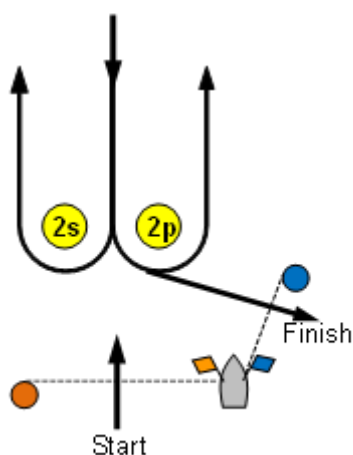
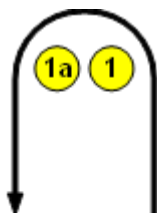
30 INSURANCE

Each participating boat shall be insured with valid third-party liability insurance with a minimum cover of £3,000,000 per incident or the equivalent.

OUR SPONSORS & PARTNERS



Addendum 1 – The Courses



Course L2: Start – 1,1a - (2s/2p) – 1,1a - (2s/2p) – Finish

Course L3: Start – 1,1a - (2s/2p) – 1,1a - (2s/2p) - 1 - (2s/2p) – Finish

Course L4: Start – 1,1a - (2s/2p) – 1,1a - (2s/2p) - 1 - (2s/2p) - 1 - (2s/2p) – Finish

A gate may be replaced by a single mark that shall be passed to port.

Course Marks:

Start:	Orange Inflatable Cylinder
1, 1a, 2s, 2p:	Yellow Inflatable Cylinder
Finish:	Blue Inflatable Cylinder or danbuoy