

Capri Marina

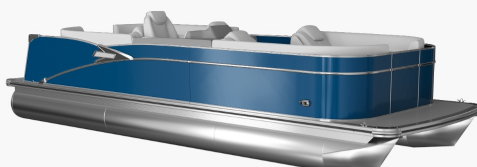
Catalina - 25' Entertainer

Finance Option - COD

Order #40464 - Complete

\$149,229 RETAIL

Capri Marina



The image of the boat shown is displayed to provide you with an idea of the look of your boat. Precise depictions of colors, dimensions, textures, or features may not be visible, or fully accurate in this image. Please see your dealer to view the boat in person, or to see samples of materials, to be sure you are satisfied with its appearance before you purchase your boat.

Options

Price

Raised Helm	\$1,797
Lighting Package - RGB Package	\$2,672
Primary Wall Color - Blue	\$0
Floorplan - 25' Entertainer	\$51,891
Secondary Wall Color - Blue	\$0
Interior Color Package - Graphite Package	\$0
Bar Seating Options - Booth Seating	\$1,547
Base Vinyl 1 - Ultrafine Koolfab Graphite	\$0
Base Vinyl 2 - Ultrafine Silver	\$0
Accent Color - Navy	\$0
Cladding Color - Charcoal	\$0
Pre-Rig - Verado V8 (250-300)	\$6,094
Hang And Install Motor w/transhield	\$1,110
Furniture Series - 6000 Series Furniture	\$2,649
Flooring Upgrade - Riptide Shadow Flooring	\$0
Catalina Platinum Edition Package	\$6,524
Sound Package - High Performance Sound Package	\$391
Canvas Color - Blue	\$0

Options

Price

GPS / Touch Screen Options - Simrad NSX 9 and NSX 7	\$8,204
Triple Tube Performance Options - Sport Performance Package	\$10,243
In Tube Storage	\$2,579
HPP Fins - 6 HPP Fins	\$719
Side Keels - Solid Side Keels	\$454
25" Transom	\$461
Outer Tube Diameter - 25	\$0
Steering Wheel Upgrade - Michigan	\$555
Cleats - 6 Pull Up Cleats	\$282
Seat Covers	\$633
Fender Holders - 4 Fender Holders	\$0
Ladder - 1 Lillipad Easy Step Ladder	\$782
Battery Switch - Dual Battery Management	\$500
Bimini Top 2 - 8.5 Ft Square Frame	\$1,938
Stand - Commander III Fiberglass Helmstand	\$2,657
Trash Can for 18 Inch Lounge Arm	\$180
Freight / Prep 4500	\$4,500

Motor Options - 250 XL COLD FUSION WHITE	\$38,890
VERADO 5.44" 1.85	
Prop - SST Prop	\$977

TOTAL	\$149,229
--------------	------------------

STANDARD FEATURES

HELMSTAND/ELECTRONICS

- Ensign III rotocast helmstand with analog dash panel
- Dual Commander III fiberglass helmstands with full windshield & analog dash panel (CRBW, ELW, QLSW, QLW)
- Tach, Volt, Fuel Gauges
- GPS speedometer
- 12-Volt power point
- Gold Plus sound package: Fusion RA-670 radio, (6) Fusion XS speakers & grills, Fusion 6-channel amp, USB audio input & charge
- Mechanical tilt steering
- BayStar hydraulic tilt steering (CRFS & ENTFS)
- SeaStar hydraulic tilt steering (CRBW, ELW, QLSW & QLW)
- Huron steering wheel
- Removeable windshield
- Courtesy light on helmstand

INTERIOR

- Commander’s mid back reclining driver’s chair with color-matched accents
- Admiral high back reclining driver’s chair with flip-up bolster & color-matched accents (CRBW, ELW, QLSW, QLW)
- Chair adjustment slider, front, back, rotate
- 4000 Series furniture with Leon seat vinyl & heat stamp accents
- Suspension seating
- Upper deck furniture – includes backs, arms, sun pads, rear console with 2 speakers on the upper deck (CRFS, ENTFS)
- Lounge arms with storage (based on floorplans)
- Privacy station curtain & frame (N/A on CRBW, QLSW & QLW)
- Interior composite wall panels (except RF)
- Deluxe seat frame cladding
- Lifetime aluminum seat frames with flow-through ventilation
- Full Riptide vinyl flooring
- 2 moveable cupholders
- Stainless steel cup holders
- Greywood heavy duty thermoform table with large cup holders, recessed tray & phone storage (large kidney or rectangle)
- USB charging port
- Vinyl non-skid strips for entry gates
- Battery Selector Switch Manual – on/off/1/2/both (ELW, QLSW, QLW)
- Battery dual smart switch system (CRFS, ENTFS)

EXTERIOR

- Deco 3 external retro monochromatic smooth panel walls
- Heavy Duty Square Frame Bimini Frame & Top (except CRFS)
- USCG navigation lights
- LED Accent Smoked Chrome Housing Docklights
- Large Smoked Chrome Hi-Flex logos
- Gates with lift-n-lay hinges & SST EZ lift latch
- Chained aft w/ski tow bar (CRB, CRBW, QLS, QLSW, N/A on Twins)
- Premium stainless telescoping ladder

HULL

- (2) 25” diameter pontoons
- (2) 27” diameter pontoons with lifting fins (CRFS, ENTFS)
- Waveglider triple 25” pontoons with high performance lifting fins, ski tow bar & aluminum waveshield (CRBW, ELW, QLSW & QLW)
- 3” rub rail with black vinyl insert
- Deck corner impact protection – polished aluminum
- Tapered front deck
- Extended rear deck
- Pontoon double full risers
- (4) stainless U-bolt & cleat combo
- 25” transom (CRFS, ENTFS)

FUEL

- 25 gallon remote fill transom tank
- 32 gallon remote fill tank under sundeck with SST gas cap & vent (CRFS only)
- 58 gallon remote fill center tube tank (CRBW, ELW, QLSW & QLW)

FISHING

- Fishing chairs with locking seat bases
- Garmin 72SV GPS/color fishfinder/depth finder
- Rear fishing center with 2 fishing chairs, rod holders & livewell
- Tackle trays with rear sink & access door