



Litchfield Housing Trust, Inc.

Annual Meeting

Monday, November 29th, 2021
at 7pm on ZOOM.

Please email JillGroodyMusselman@gmail.com
for details and to RSVP. Thank you.



AGENDA:

- Secretary's Report
- Treasurer's Report
- President's Report
- Membership Report
- CHDO Activities
- Election of Trustees
- Other Business



ELECTION OF TRUSTEES:

The following slate of candidates is presented by the Nominating Committee: Miles Borzilleri, Chairman, Peter Gay & Tim Breslin

Continuing Trustees to 2023

John Baker, Cleveland Fuessenich, Kelli Green, Bill Mullee & Kim D'Andrea

Continuing Trustees to 2024

Tim Breslin, Joyce Briggs, Barbara Brower, Mark Murphy, Robert Petricone, Sara Musselman & Gary Waugh

Nominees to 2025

Miles Borzilleri, Peter Gay, Stacie Kavle, Jeffrey Zullo, Rene McGovern & Rosemarie Greco

2021 | HOUSING TRUST NEWS



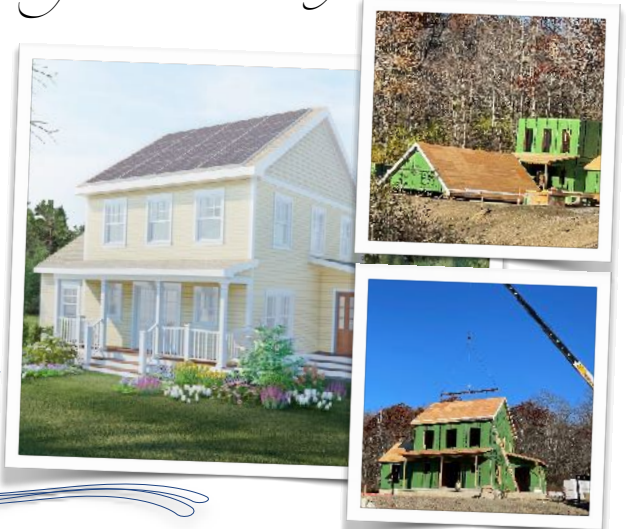
Opening doors for families. Strengthening our community.

Dear Friends,

As we celebrate the season of giving, we reflect on the generosity of those who have supported our community. We are very grateful. Thank you. Support for the Litchfield Housing Trust, Inc. provides sustainable, energy-efficient housing for residents and future residents of the Litchfield community.

The Litchfield Housing Trust invites you to join us in making HOME a reality for families to live and work in Litchfield. Your membership, contributions, and bequests represent a shared dedication to our mission.

Together, we will continue to provide sustainable housing so that future generations may call Litchfield home. Thank you.



Gagarin Place on Rt. 202, Litchfield



LitchfieldHousingTrust.com | PO Box 1121, Litchfield, CT 06759 | 860.480.9178

venmo @LitchfieldHousingTrust





The Litchfield Housing Trust (LHT) appreciates your support as we continue to provide housing for our community. At this time, we are working to improve the availability and variety of housing we offer. Litchfield has a drastic need for one, two, and three-bedroom units, as evidenced by requests over the past 36 months. We believe that a strong community requires diversity. Currently, our families serve as volunteer fire and EMS personnel, work on local boards, are teachers, nurses, retirees, and others whose contributions continue to make Litchfield a lovely place to live and raise a family.

At Gagarin Place, our partnerships with Crosskey Architects, Housing Enterprises, Home Energy Technologies, and Burlington Construction have provided the expertise to LHT in building homes with low operating costs. Solar panels on the houses at Gagarin Place will offset heating, cooling, and electrical costs. Low monthly operating expenses are vital to the mission of our organization as we build energy-efficient, sustainable, affordable housing.

Over the years, members of the Board of Selectmen have been highly supportive of our work – recognizing the need to preserve the economic diversity of Litchfield. They continue to support our efforts, and we continue to assist the town in implementing its Plan of Conservation and Development, especially regarding housing. Currently, we are collaborating on the Litchfield Affordable Housing Steering Committee to meet the future needs of our community.

The Litchfield Housing Trust is pleased to recognize the CT Departments of Housing and Economic Community Development, HUD, Union Savings Bank, Litchfield Bancorp, and Torrington Savings Bank for their contributions toward making Gagarin Place a reality. In honor of our founder, Andy Gagarin, and his wife Jamie, we are building eight beautiful, sustainable, energy-efficient, and ADA-compliant three-bedroom homes for ownership. These homes will be available for occupancy in the late Spring of 2022. Phase II of the Gagarin Place applications will open 12.01.21 through 3.31.22. Anyone interested in applying should call Jill at 860.480.9178.



Please visit our website at LitchfieldHousingTrust.com to learn more, view Gagarin Place homes, download an application for housing, or sign up to volunteer. Follow us on Facebook @LitchfieldHousingTrust and soon on Instagram. In addition, for your convenience, you may now make donations with Venmo @LitchfieldHousingTrust.

To our longtime supporters, we extend our heartfelt appreciation. Our homes are being built with your generous contributions and additional grants. Are you new to town? Welcome! Litchfield is a beautiful place to call home. Please consider the Litchfield Housing Trust in your year-end giving as we collaborate with the Town of Litchfield and its leaders to enhance energy-efficient, sustainable, affordable housing for the viability and diversity of our community.

Warm wishes for a peaceful, healthy, and joyous holiday season,

Jeffrey Zullo
President

Stacie Kavle
Vice President

Jill Groody Musselman
Executive Director



Celebrating Our 32nd Anniversary

The Litchfield Housing Trust was created to strengthen our community by advocating, facilitating, and developing housing that is affordable to a diverse population.

Affordable Eligibility

To become eligible for affordable housing, a family's income must be at or below 80% of Litchfield's Area Median Income (AMI). In 2021, according to the CT Department of Housing and HUD, to purchase a Gagarin Place home, 80% AMI = \$79,900 maximum income for a family of four.

Housing is defined as affordable if it costs less than 30% of the household's total income, including utilities.

LHT | Board of Trustees

Jeff Zullo, President
Stacie Kavle, Vice President
Sara Musselman, Secretary
Miles Borzilleri, Treasurer
Mark Murphy, Assistant Treasurer
F. Robert Petricone*
Joyce Briggs*
Barbara Brower*
John Baker
Tim Breslin
Kim D'Andrea
Cleveland Fuessenich
Peter Gay
Rosemarie Greco
Kelli Green
Rene McGovern
Bill Mullee
Gary Waugh

* denotes original founding members

Jill Groody Musselman, Executive Director

Visit us at LitchfieldHousingTrust.com.

