

Lake Tahoe Advertising

The APPEAL'S Full Schedule of Rates

Nevada Appeal, August 6, 1885

As soon as the game season opens the Appeal's business connection with the Lake Tahoe summer resorts assumes a more definite shape. It is frequently quite wearing on an editor to go round the Lake in a rowboat and explain his schedule of rates to the various landlords about The Lake. We have decided to fix a sliding schedule of full rates and charge accordingly.

We have always charged \$20 a season to locate the big 20-foot trout in front of any particular hotel. Last year was a dull season, and as no particular landlord could afford it all the while, they divided the trout's time. The Grand Central, however, hogged it during most of the fishing season for \$20, which was dirt cheap, as it kept hundreds of guests there waiting for the trout to upset a boat or eat up a child.

This season the rates will be higher, but a reduction will be made to any enterprising man taking it for the balance of the Summer.

The bear stories in this paper always come high. Last Summer McKinney was the only landlord who could afford to have his bears written up in

this paper. We charge \$24 for each grizzly, and when a tourist was represented as devoured it cost \$10 extra. There is always a rush to a spot where a tourist is supposed to have been eaten.

We charge Peter Asche \$50 for that year in which he saved the lives of three young ladies. He paid the bill like a man. This item going the rounds of the papers caused him to capture a beautiful and accomplished woman. There is nothing like printers ink to give a man a start.

We used to get \$10 a month for running vast herds of deer in back of Spooner's Station, but when the forests got all cut down, we had to raise the rates, as the deer story looked so improbable that the Appeal's reputation for veracity was in danger and we charge an extra five for the extra risk. That was about the time that the business relations between Spooner and the Appeal were rudely severed. But we moved those deer right over in back of the Tallac House at the advanced rates and assured the tourist, through our valuable columns, that the spotted fever had broken out among the Spooner Station deer, and it

by Bill Dolan

was confacious to the hunter.

The subterranean passage in the bottom of the lake, came high year before last, but the landlords had to have it. The proprietor of the Cornelian Springs Hotel was the man who had the nerve to pay the bulk of the rates charged, and that's why the 8th wonder of the world was put within a few yards of his wharf. He made so much money by the publicity given this hole that he took it one night and skipped to Canada with it. He took the subterranean passage along with him, too.

In consequence of the silver depression and other auxiliary causes we shall reduce our rates on fish, bear and deer for the game season, but the subterranean passage and flat footed statements relative to the utter absence of mosquitoes about any particular resort will be at the old figures.

We have some second-growth hand-made duck and trout stories still in stock, which will be disposed of at cost.

Notices of big trout catches, such as we give Judge Rising and Congressman Woodburn, will be placed within the reach of all this year--\$, in advance.

Edited by David Wilkins

... Ormsby County Extension Agent

Graphic Homes & Gardens

The Rose... Queen of Flowers

Roses have been called the "Queen of Flowers," and rightfully so. No other flower has been admired by so many. It has been used as a subject in painting, literature, music, and even politics.

The most important use of a rose is for visual enjoyment in your garden, and as floral arrangements in your home.

When roses are used in floral arrangements, they will last longer when cut in the afternoon. Research has proven that afternoon cutting adds from eight to ten hours to the life of the flower. Why is this so? It is due to the higher sugar content in the flower at this time of day. By morning the sugar content in the flower is very low, for it has been used by the plant during the night. After cutting put the stems in cool water that comes within an inch of the flower bud. They may be stored for a few days at a temperature of fifty degrees Fahrenheit.

Cut roses can often be revived after they start to droop by giving them the following treatment. First, make a fresh slanted cut at the end of the stem, then plunge the stem into boiling water for a second, remove and place in cold water. This process removes the air bubbles from the water conductive tissue of the stem which permits the water to flow freely to the flower.

Fresh roses are also used in perfumes, rose water, jam, and for a potpourri. In 1540 A.D. King Edward used rose perfume which was made from rose water allowed to boil slowly. Rose water is made by gathering two pounds of rose petals, covering them completely with water, boiling for a few minutes then allow to simmer. Potpourris are a combination of rose petals, colorful flowers, leaves, and spices which all blend together to serve as a delightful air freshener in your home. These are only a few of the uses of roses.

For those interested in growing roses, a visit to Reno's public rose garden, located in Idlewild Park, is highly recommended.

Do Your Part

Residents Are Urged To Participate In Local Spring Clean-Up Campaign

Homeowners from coast to coast were urged today to participate in Spring Clean-Up Week this year, not only to spruce up their homes, but also to eliminate unnecessary fire hazards.

Spring Clean-Up Week comes at different times in different communities around the nation, but in most towns and cities it is observed in April or May.

"Fire losses last year were \$1.4 billion, dipping 2.7 per cent under the preceding year, and part of this decline may well be attributed to last year's Spring Clean-Up, in which

Suggests Churches Check Premises For Fire Hazards

Churches should take time out during Spring Clean-Up Week to check their premises for fire hazards, the American Insurance Association said today.

During the winter months, when church social activities are at their height, there is a tendency to let maintenance slide, the Association added.

Spring Clean-Up should begin with an inspection of the furnace room. It's a good plan to have the heating unit inspected regularly by a qualified serviceman. Too many church fires start in faulty or overheated units.

It is a good plan, too, to have flues and chimneys inspected at least once a year. Many churches turn up the heat a few hours before services, and it is essential that flues and chimneys be in good order if the furnace is put under draft.

The furnace room should also be inspected for collections of old church service programs and primary education aids which may have been left there for the custodian to throw out. All unneeded papers should be disposed of, for old papers are a combustible upon which fires feed.

Spring Clean-Up should be carried into the church hall. At least once a year the refrigerator, food freezer, cooking range, exhaust fans and other church hall kitchen equipment should be checked to be sure that no unsafe electrical conditions or fire hazards have developed.

In addition, some member of the housekeeping committee should be assigned to the job of making sure the kitchen oven, broiler, hood, and ventilation ducts are kept free from grease.

Know Your Plants

Plants which live a single season, such as petunias and marigolds, are called annuals. Biennials, an example of which is foxglove, will flower a second year, then die. Perennials come up year after year. Roses and peonies are perennials, reports the Gardeners' Advisory Council of the Union Fork and Hoe Co.

GREEN AS ?



Lime Sherbet, a variety of nicotiana, is chartreuse green; colors deepest in shady spots.

Envy zinnia is apple green against olive green leaves. Blooms are 3.4 inches across.

Nature usually reserves the color green for foliage, but sometimes she experiments and tries it for flowers. These green blooms always have been a curiosity in the garden, some of them beautiful, some interesting, others hardly worth growing.

Thus, there is a green gladiolus (beautiful), a green tulip (interesting) and a green rose (hardly worth growing). But there are two new annuals that have green blooms and are both beautiful and interesting to grow.

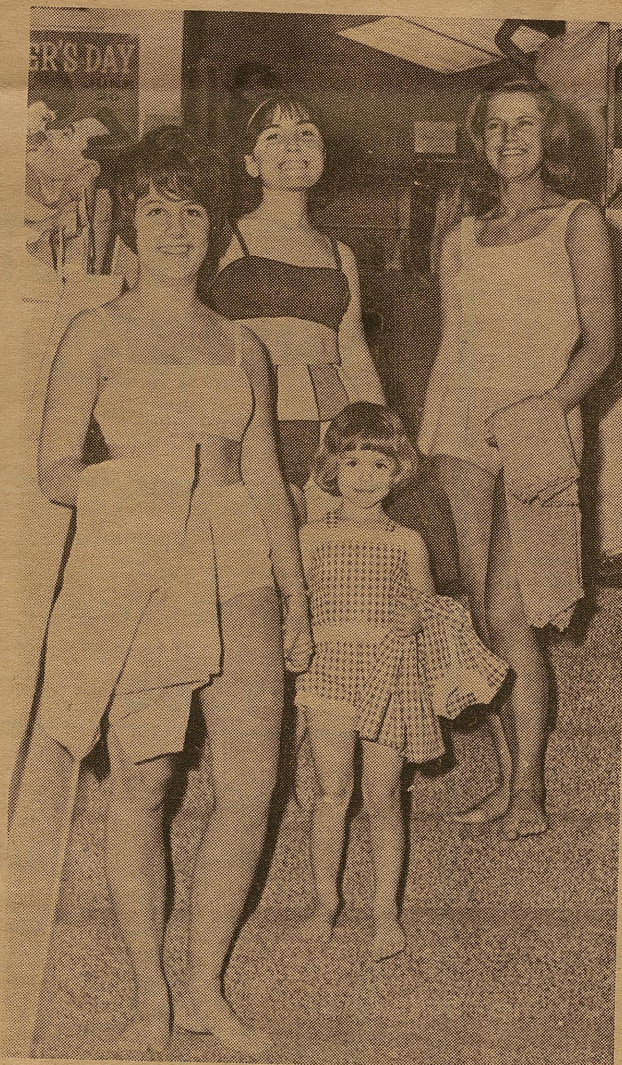
One of these is a variety of flowering tobacco or nicotiana named Lime Sherbet. Nicotiana is known especially for its good performance in shady spots and such locations bring out the deepest color in Lime Sherbet's chartreuse-green flowers. Plants grow 18 inches high and bear many delightfully scented blooms, excellent for cutting. New this year is a green zinnia, named for what visitors to your garden will feel when they see it — Envy. This flower is apple green against the olive green of the leaves. As with Lime Sherbet, the color of Envy flowers is deeper if plants are shaded. Since zinnias do on sunny situations, the deeper color, if desired, can be obtained by covering the plants with cheesecloth on sunny days.

Both of these unusual-hued annuals are easy to grow from seeds and, while both may be transplanted, they will thrive when seeds are sown where plants are to bloom. This is especially true of the zinnia.

3
LIVE MODELS
3

CATALINA
JANTZEN
BOBBY BROOKS
BEACH PARTY

OPEN TILL
9 P.M.
MON. - WED
FRI.



STROLLING
SWIM SUIT
FASHION
SHOW

MONDAY
THRU
FRIDAY

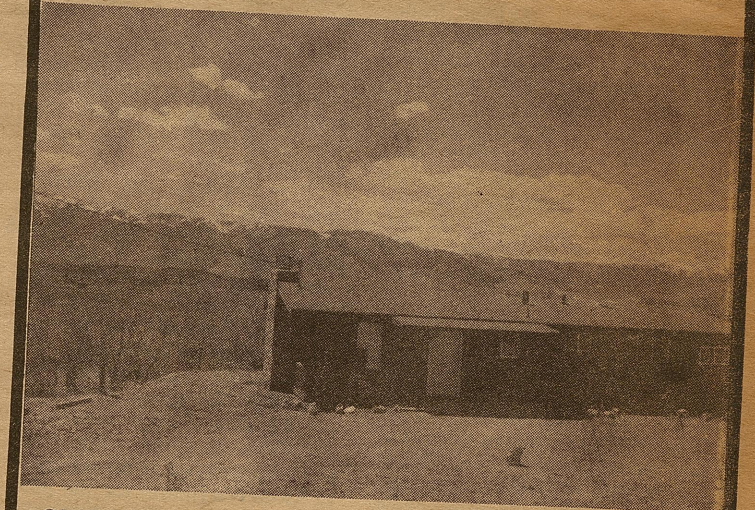
2:30 P. M. -
3:30 P. M.

AT

MURDOCK'S

CARSON CITY
- OF COURSE

DREAM HOUSE on the RIVER



Close to Carson City. New two Bedroom plus nursery or den, on 2.5 of the most lovely acres in this area. Large living Room with NATURAL ROCK FIREPLACE! Dining Area conveniently located...adjacent to the Kitchen. Many built-ins Natural wood paneling & beam ceilings...for a warm and cozy atmosphere! This home overlooks a tree covered meadow with a beautiful view of the river & mountains...to the WEST! Excellent fishing & all kinds of hunting! A RARE BUY... ONLY \$21,950...reasonable TERMS! Don't delay!

Strout Realty

Jack Bay Realtor

319 N. CARSON

882-2181