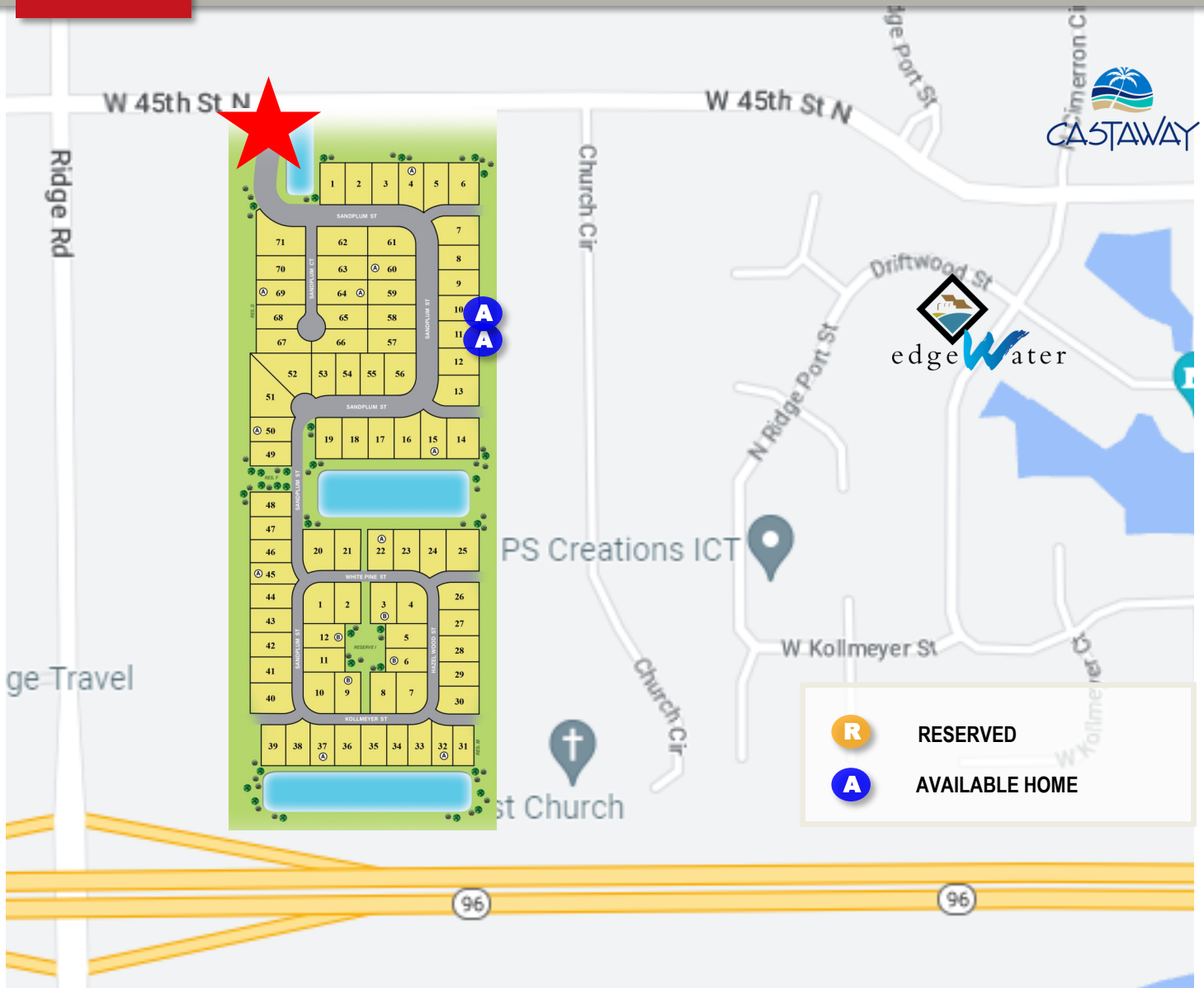


# New Townhomes For Rent



**Baxter plan 1,191 SF**  
**Maxine plan 1,355 SF**

**\$1,600/mo 3 bed, 2 bath**  
**\$1,650/mo 4 bed, 2 bath**

- Maize Schools, neighborhood ponds
- Exterior maintenance, mowing and sprinklers provided
- Covered patios, east back yards
- Luxury vinyl plank flooring throughout, easy to clean and hypoallergenic.
- Up to 2 pets approved per unit with \$300 pet fee. No large or aggressive breeds.

***Reserve Today!***

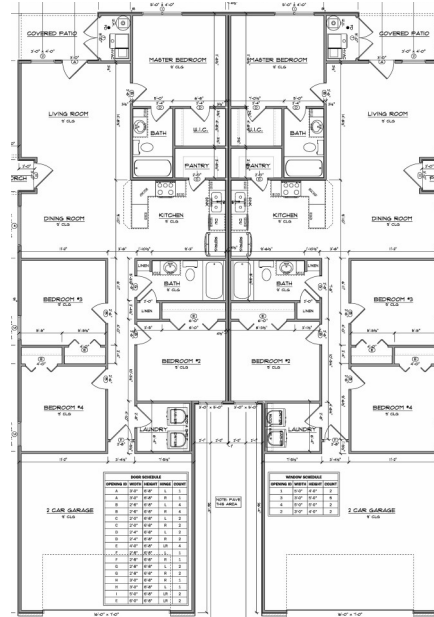
- 1) Submit your application by text or email at Red Foxx Rentals
- 2) Complete a background check via email link (\$43 fee charged thru Transunion My Smart Move)
- 3) Once approved, select your property and pay security deposit to reserve your unit for your move in date

# Available Plans

## Maxine 4 Bedroom 1,355 SF

The Maxine plan is a larger version of the Baxter plan with a 4th bedroom added in the main hall and larger laundry room and extra linen closet in the bathroom. A great value with 164 additional SF for only \$50/month!

We kept the popular walk-in pantry and efficient split bedroom design. These units have east facing back yards for evening enjoyment in the summer shade on the covered patio. The primary suite is located at the back of the home with 3 more bedrooms in the front hall.



## Baxter 3 bedroom 1,191 SF

The popular Baxter plan is a proven favorite with its walk-in pantry and efficient split bedroom design. These units have east facing back yards for evening enjoyment in the summer shade on the covered patio. The primary suite is located at the back of the home with 2 more bedrooms in the front hall. Our latest version of this plan has a separate laundry room in the hall.



Floor Plans located at these addresses:

**Maxine \$1,650/ mo** (4 bed, 2 bath) 4458 & 4460 N Sandplum St

**Baxter \$1,600/mo** (3 bed, 2 bath) 4464 N Sandplum St