

# Hills of Aspen Creek

**RICHLAND**  
HOMES

## INCLUDED FEATURES

the **ELEMENT**  
COLLECTION by

*Let Richland Homes take the stress out of visiting showrooms for selection appointments. However, several Options are available for you to add to your Element Collection Floor Plan.*

*Color Packages are pre-selected by Richland Homes Interior Designer.  
Color Packages may not be mixed.*

**Model Homes do not directly reflect pre-selected packages.**



### INTERIOR

- Nine Foot Ceilings on Main Floor
- Drywall Wrapped White Vinyl Windows
- White Painted Trim, Half Wall Stair System and Passage Doors
- Flooring
  - LVP Flooring In Family Room, Front and Rear Entry, Kitchen / Dinette, Powder Room (if applicable).
  - LVT in Primary Bath, Laundry and Main Bath
  - Carpeting In All Other Areas
- Chrome Door Hardware and Lighting Fixtures
- Sherwin Williams Flat Latex Interior Paint Finish

### KITCHEN

- Birch Cabinets
- Quartz Countertops
- Whirlpool Stainless Oven, Dishwasher & Microwave
- Moen Kitchen Faucet in Chrome
- Stainless Steel Sink

### BATHROOM

- Moen Chrome Bathroom Faucets
- Polystone Countertops In Baths
- Plate Glass Mirrors Over All Vanities

### EXTERIOR

- James Hardie Siding
- 30 yr. Heritage® laminated asphalt shingles
- Sherwin Williams Satin Finish Latex Exterior Paint
- One Garage Door Opener With Two Remotes
- 10' x 10' Concrete Patio (per plan)
- Sod and Sprinkler System (Up to 5,000 Sq. Ft.)

### OTHER

- 93% Gas Furnace
- Insulation: R-50 Blown in Flat Ceilings, R-30 Batts in Sloped Ceilings, R-15 Blown in the Side Walls
- 40-gallon high efficiency Gas Water Heater
- 4<sup>th</sup> Bedroom Options are now available in Lower Levels

**BERKSHIRE  
HATHAWAY**  
HOMESERVICES

AMBASSADOR  
REAL ESTATE

Represented by:  
Jill Marie Bartling, GRI  
**402-215-6715**  
**Hillsofaspencreek.com**



These plans and elevations are architectural concepts only. Actual floor plans may differ. Richland Homes, LLC reserves the right to make modifications to plans and change price without notification. No reproduction or other use of these plans can be made without the express written consent of Richland Homes, LLC.

# THE GOLD

1,527  
square feet

3   
bedrooms

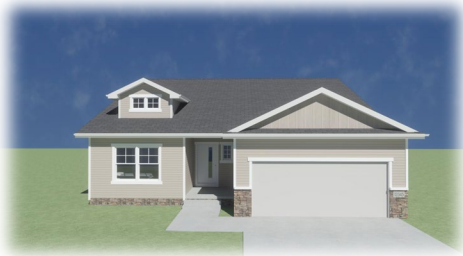
2   
bathrooms

2   
car garage

**RICHLAND**  
HOMES  
buildrichland.net



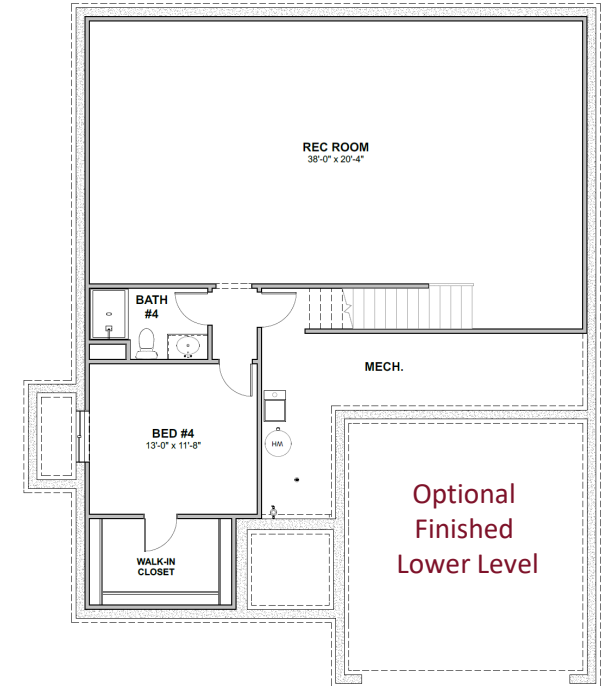
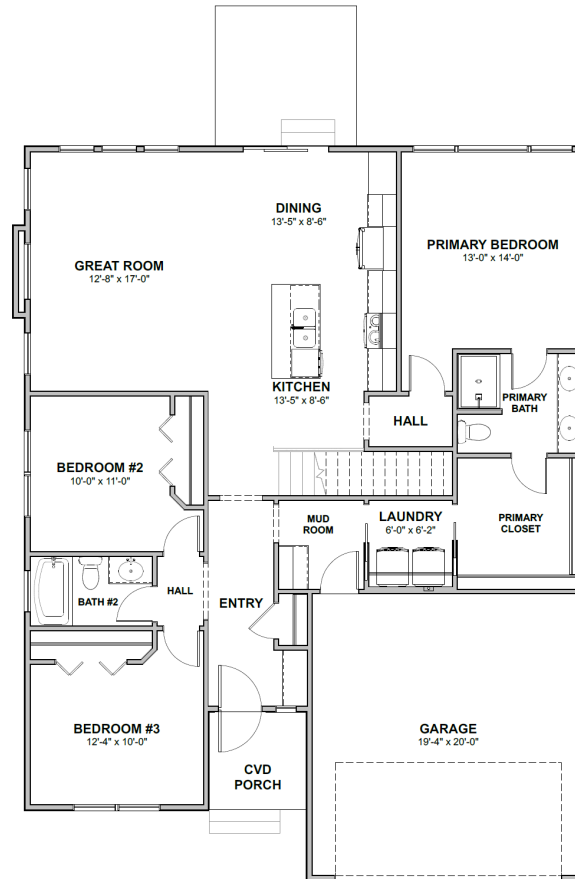
TRADITIONAL



MODERN PRAIRIE



MODERN FARMHOUSE



**BERKSHIRE  
HATHAWAY**  
HOMESERVICES

AMBASSADOR  
REAL ESTATE



Represented by:  
Jill Marie Bartling, GRI  
402-215-6715

**Hillsofaspencreek.com**



These plans and elevations are architectural concepts only. Actual floor plans may differ. Richland Homes, LLC reserves the right to make modifications to plans and change price without notification. No reproduction or other use of these plans can be made without the express written consent of Richland Homes, LLC.

# THE SILVER

1,795  
square feet

3   
bedrooms

2   
bathrooms

2   
car garage

**RICHLAND**  
HOMES  
buildrichland.net



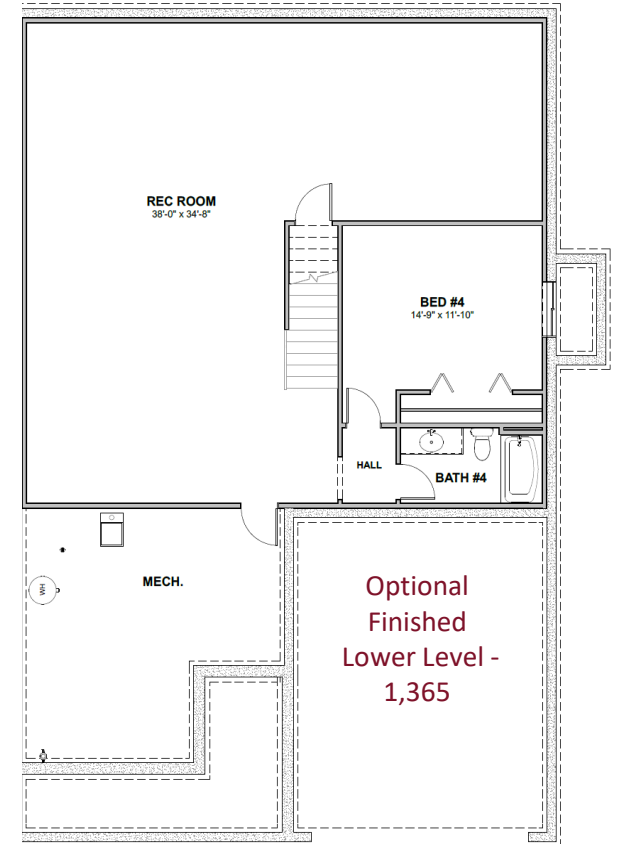
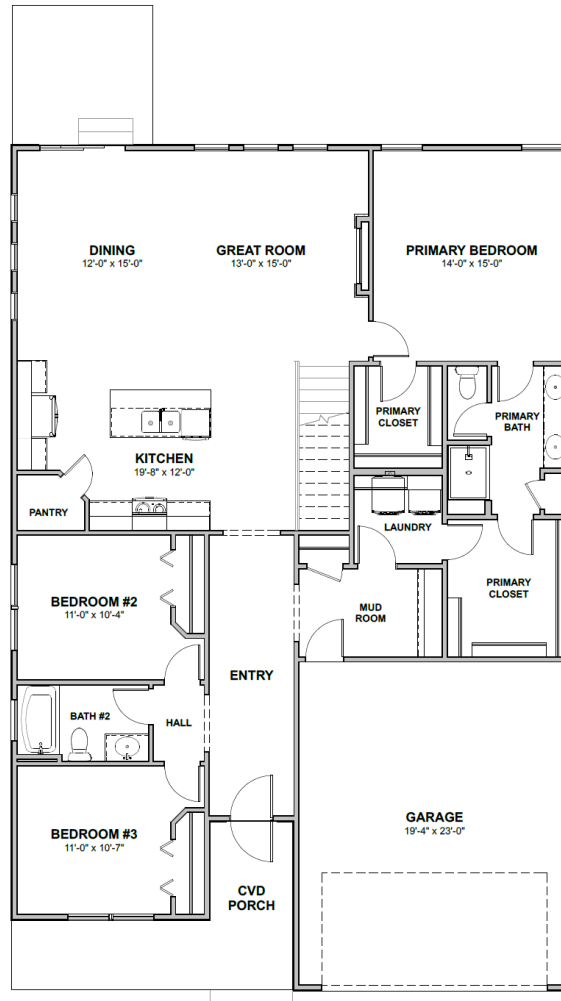
CRAFTSMAN



CONTEMPORARY



MODERN FARMHOUSE



**BERKSHIRE  
HATHAWAY**  
HOMESERVICES

AMBASSADOR  
REAL ESTATE



Represented by:  
Jill Marie Bartling, GRI  
402-215-6715

**Hillsofaspencreek.com**



These plans and elevations are architectural concepts only. Actual floor plans may differ. Richland Homes, LLC reserves the right to make modifications to plans and change price without notification. No reproduction or other use of these plans can be made without the express written consent of Richland Homes, LLC.

# THE COBALT

1,680  
square feet

3  bedrooms

2 1/2  bathrooms

2  car garage

**RICHLAND** HOMES  
buildrichland.net



CRAFTSMAN



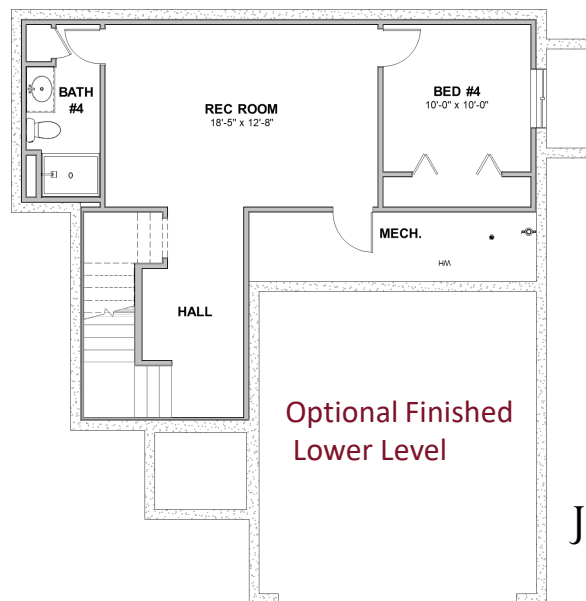
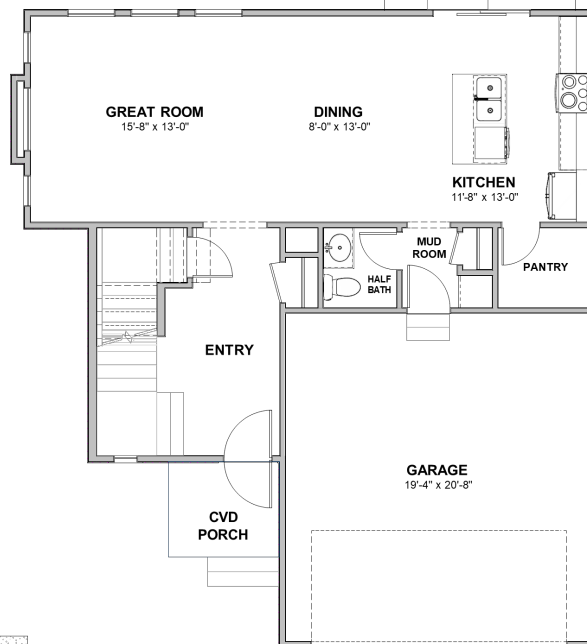
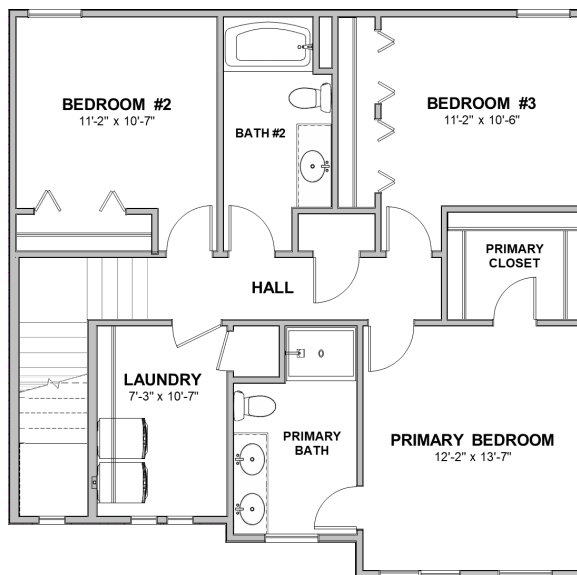
CLASSIC URBAN



TRADITIONAL

**BERKSHIRE  
HATHAWAY**  
HOMESERVICES

AMBASSADOR  
REAL ESTATE



Optional Finished  
Lower Level



Represented by:  
Jill Marie Bartling, GRI  
402-215-6715

Hillsofaspencreek.com



These plans and elevations are architectural concepts only. Actual floor plans may differ. Richland Homes, LLC reserves the right to make modifications to plans and change price without notification. No reproduction or other use of these plans can be made without the express written consent of Richland Homes, LLC.



# THE GRANITE

1,767  
square feet

3   
bedrooms

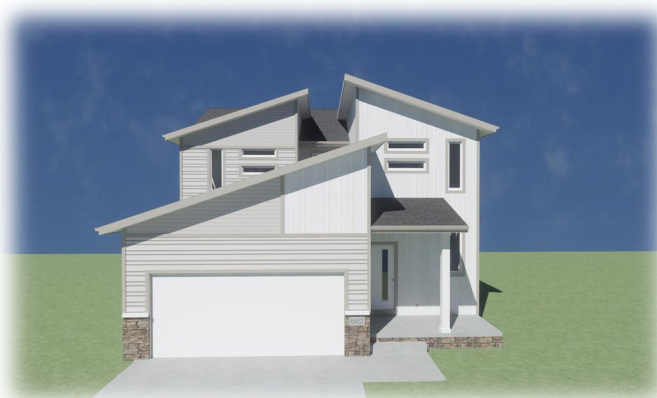
2 1/2   
bathrooms

2   
car garage

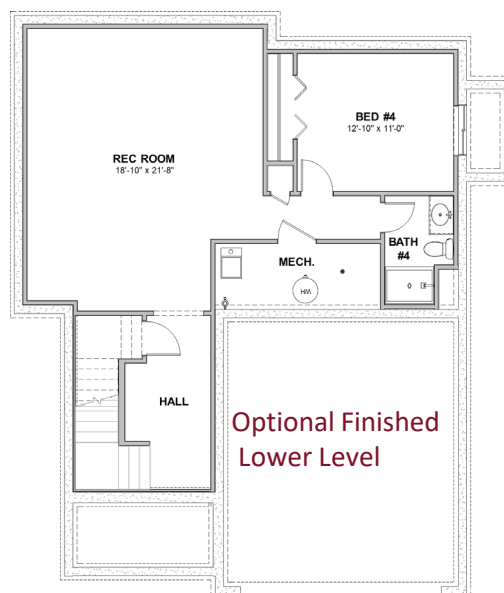
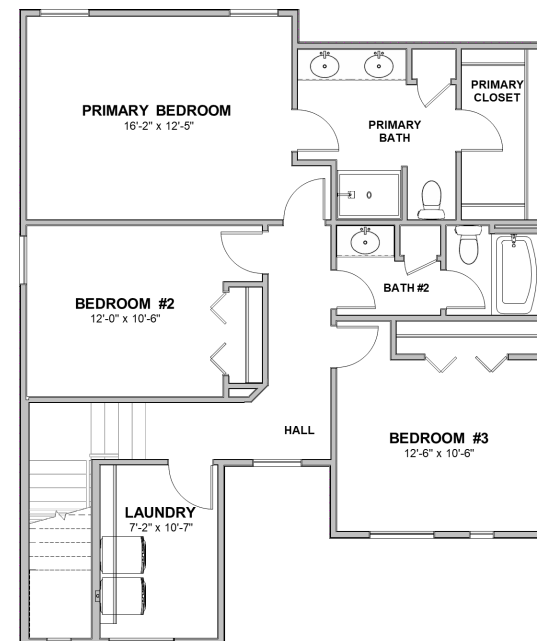
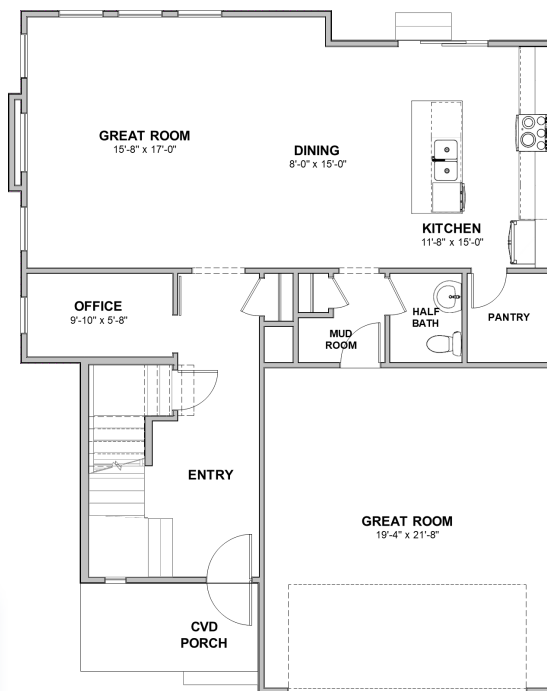
**RICHLAND**  
HOMES  
buildrichland.net



MODERN PRAIRIE



CLASSIC URBAN



Optional Finished  
Lower Level

Represented by:  
Jill Marie Bartling, GRI  
402-215-6715  
Hillsofaspencreek.com



**BERKSHIRE  
HATHAWAY**  
HOMESERVICES

AMBASSADOR  
REAL ESTATE

# THE SLATE

1,897  
square feet

3   
bedrooms

2 1/2   
bathrooms

2   
car garage

**RICHLAND**  
HOMES  
buildrichland.net



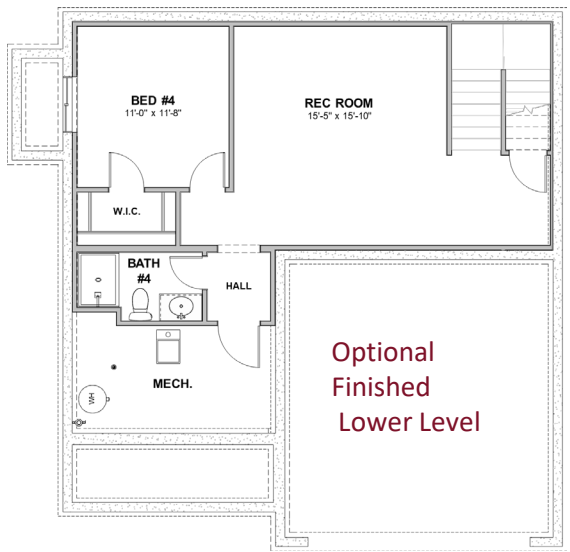
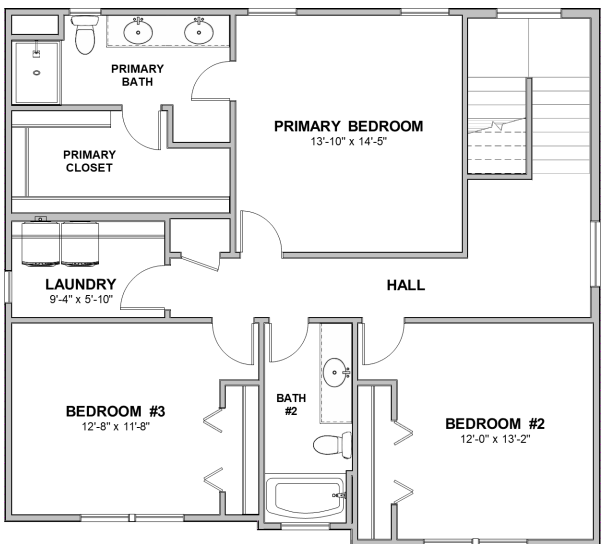
CRAFTSMAN



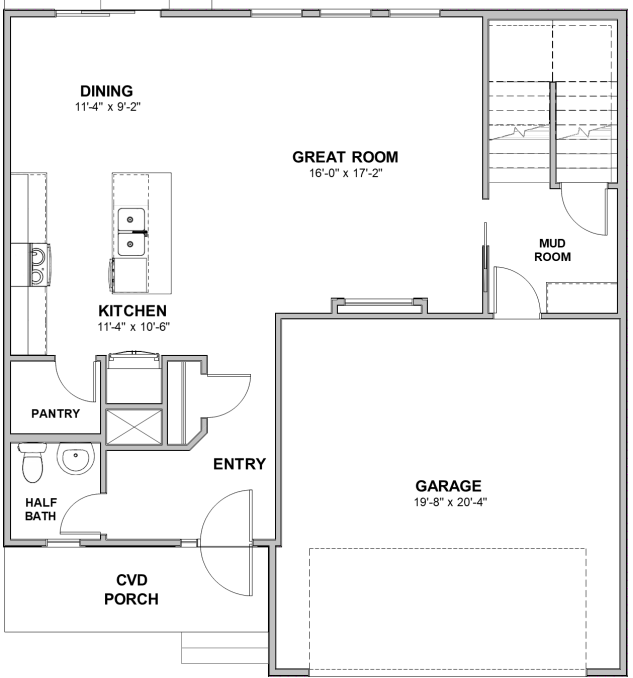
TRADITIONAL



FARMHOUSE



Optional  
Finished  
Lower Level



Represented by:  
Jill Marie Bartling, GRI

402-215-6715

Hillsofaspencreek.com



**BERKSHIRE  
HATHAWAY**  
HOMESERVICES | AMBASSADOR  
REAL ESTATE

These plans and elevations are architectural concepts only. Actual floor plans may differ. Richland Homes, LLC reserves the right to make modifications to plans and change price without notification. No reproduction or other use of these plans can be made without the express written consent of Richland Homes, LLC.

# THE MASON

2,131  
square feet

3  bedrooms

2.5  bathrooms

2  car garage

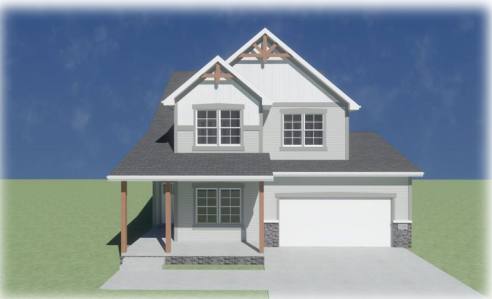
**RICHLAND**  
HOMES  
buildrichland.net



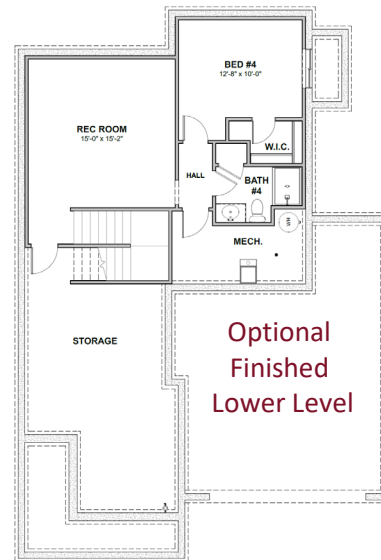
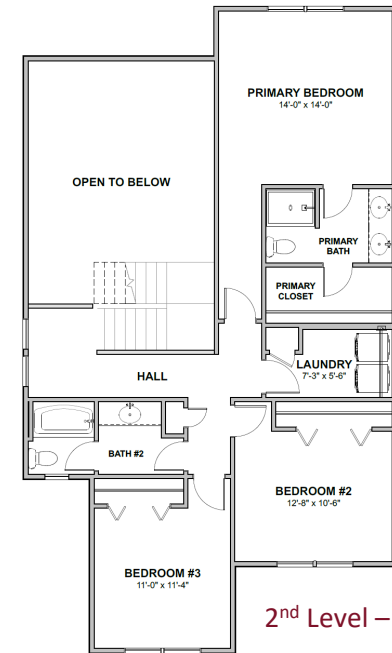
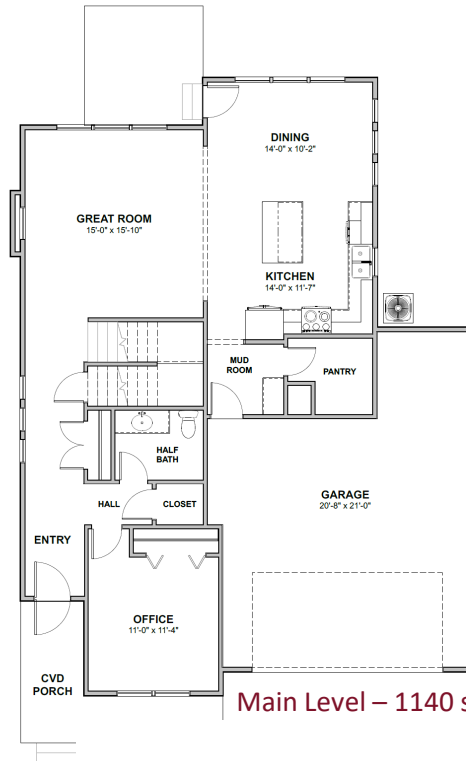
TRADITIONAL



CONTEMPORARY



FARMHOUSE



**BERKSHIRE  
HATHAWAY** | AMBASSADOR  
HOMESERVICES | REAL ESTATE

Represented by:

Jill Marie Bartling, GRI

402-215-6715

[lillsofaspencreek.com](http://lillsofaspencreek.com)



These plans and elevations are architectural concepts only. Actual floor plans may differ. Richland Homes, LLC reserves the right to make modifications to plans and change price without notification. No reproduction or other use of these plans can be made without the express written consent of Richland Homes, LLC.