

# J2 FARM SUPPLY

780-581-9029

[www.J2farmsupply.ca](http://www.J2farmsupply.ca)

📍 [Info@J2farmsupply.ca](mailto:Info@J2farmsupply.ca)  
Smoky Lake County, AB

## Calving Catalogue 2026

Shipping Across  
Canada





# **FerAppease<sup>®</sup>**

Maternal Bovine Appeasing Substance

**Block the stress.  
Wean them with FerAppease.**

## **Also ideal for grafting calves**

Helps reduce stress on the cow  
while she accepts a new calf

- Wean calves with confidence & reduce stress
- Encourage acceptance of grafted calves



**Give your calves  
the comfort of being with mom.**

That same calming support can help  
mom stay relaxed while accepting  
a grafted calf.

The active ingredient of FerAppease is a  
synthetic analogue of the Maternal Bovine  
Appeasing Substance (MBAS).

- Designed to be applied to the top of the nose  
and top of the head, and when breathed in,  
MBAS work in the brain to reduce stress.

**FERA**  
DIAGNOSTICS & BIOLOGICALS



# Pick Your Size

NEW

## FerAppease®

Maternal Bovine Appeasing Substance



### Protocol on Cows

Apply 5 mL to cow's nuchal skin and 5 mL to the skin above the muzzle prior or after calving and see results in:

- Smoother transition for 1st lactation heifers onto milkers (reduction of heifers that kick off the milker)
- Reduction in Retained Placentas and reduction in Metritis
- Increased milk yield

### FERAPPEASE

KVS	DESCRIPTION	SIZE	PRICE
1143-001	FerAppease Bovine	300 mL	\$135
1143-010	FerAppease Bovine Applicator (Bottle Mount)	300 mL	\$60
1143-002	FerAppease Bovine	1 L	\$375
1143-011	FerAppease Bovine Applicator	1 L	\$65



## A supplement to help support newborn calves.

Birth is a stressful time for calves – difficult births and calving into cold environments add to that stress. It is critical to get these calves on their feet and eating. Calf Perk® is an easy to use, immediate energy boost for newborn calves that naturally increases body temperature and respiration rates to perk them up. Formulated with the help of industry experts, Calf Perk's unique, patent pending formulation ensures rapid absorption, maximizing its effect. For results you can see, choose Calf Perk!

## FEATURES & BENEFITS

- Concentrated, easy to use
- Quick absorbing, fast acting
- Naturally increases body temperatures and respiration rates in newborn calves
- Enhances calf vigor and suckle reflex
- Based on recommendations from human medicine for infant support
- Unique energy source
- Research demonstrates no negative effect on immunoglobulin absorption

## WHEN TO USE

- Newborn calves that need a boost
- After a difficult birth
- During cold temperatures
- Depressed, lethargic calves



## CALF PERK 15ML TUBE

## AVAILABLE PACKAGE SIZES

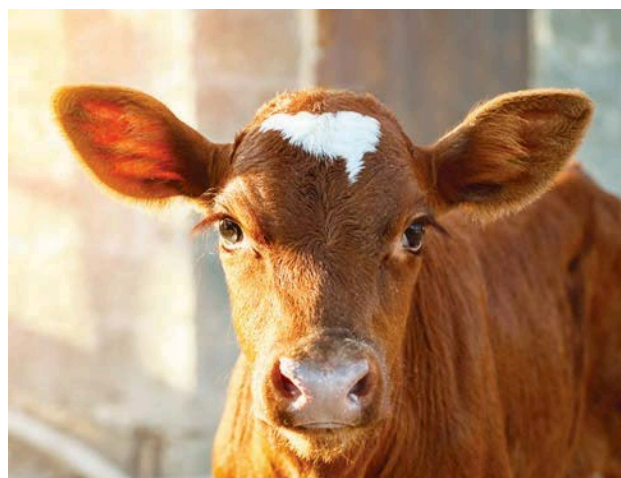
If ordered in quantities of 15 units, Calf Perk ships in fishbowl display

Redefining  
hydration  
to keep animals  
drinking, eating &  
producing.



## DIRECTIONS FOR USE

Shake well before use. Give a single tube of Calf Perk orally across the tongue no more than 30 minutes prior to colostrum or milk feeding.



KVS	DESCRIPTION	Price
1076-002	Calf Perk - Each	\$14.00
1076-002B	Calf Perk - 15 Pack	\$202.50
1076-001	Renova 12 Pk	\$57.50





# Helping Newborn Calves thrive with Natural Caffeine

This study explored how giving new born calves a small dose of caffeine—specifically from green tea extract—can help improve their health, energy, and behavior during their first month of life.

## Why Caffeine?

Caffeine is well known for its ability to boost alertness and energy in humans. Researchers wanted to see if it could do the same for calves, especially those born with low energy or who struggle to stand and feed shortly after birth.

## How the Study Worked

The researchers worked with 120 Holstein heifer calves and divided them into three groups:

- 1. Single Dose Group (SNG)** – received 15 mL of green tea extract (about 327.6 mg of caffeine).
- 2. Double Dose Group (DBL)** – received 30 mL (about 655.2 mg of caffeine). Control Group (CON) – received a 15 mL placebo with no caffeine.

All calves were given their treatment within two hours of birth, just before receiving colostrum (the first milk, rich in antibodies). The team then monitored the calves' health, energy levels (called "vigor"), and how much time they spent lying down over the next 28 days.

## What They Measured

- **Immunity:** Blood samples were taken to measure IgG, an important antibody that helps protect calves from disease.
- **Vigor:** Calves were scored on their energy and responsiveness.
- **Health:** Regular checks were done to assess signs of illness.
- **Lying Time:** Sensors tracked how much time calves spent lying down, which can indicate energy levels.

## Key Findings

- **Better Immunity:** Calves in the single dose group had slightly higher IgG levels than those in the control group, suggesting better absorption of colostrum. **More Energy:** Calves in the double dose group showed higher vigor scores and were more active on their first day of life, spending less time lying down. **Improved Health:** The double dose group also had better health scores over the 28-day period.
- **No Negative Effects:** The caffeine didn't interfere with colostrum absorption or cause any harm.
- 

## Why It Matters

Newborn calves often face challenges right after birth, especially if they've had a difficult delivery. They may be slow to stand, feed, or breathe properly. This research shows that a simple, natural caffeine supplement like Calf Perk<sup>®</sup> could give these calves a much-needed boost—helping them absorb nutrients better, become more active, and stay healthier in their critical early days.

## Conclusion

Giving calves a small dose of caffeine from green tea extract shortly after birth can improve their energy, health, and immune function. This could be especially helpful for calves that are weak or slow to recover from birth. Calf Perk<sup>®</sup> offers a practical and safe way to support calf wellbeing during their first month of life.





## Confidence for calves with digestive upset.

An oral capsule containing essential oils and probiotics to support calves with digestive upset.



Calf Renova is the natural solution in an easy-to-use capsule that helps to clean the gut and restore beneficial bacteria. By quickly addressing enteric health issues recovery support is provided and any slowdown in calf growth can be minimized.

### Calf Renova:

- 4 Maintain balance of healthy gut microflora
- 4 Stimulate feed intake
- 4 Use at first sign of digestive upset
- 4 Support immune function

**Use at FIRST signs of digestive upset to maintain balance of healthy gut microflora.**

**Be proactive!**

### Directions for Use:

Administer 1 capsule per calf for up to 3 days:

- At first sign of digestive upset
- Upon receipt of incoming calves

Administer 2 capsules for severe digestive upset situations, and repeat with 1 more capsule after 24 hours, if needed.



## Key ingredients working together to support a healthier calf

### 1 Essential Oils

Provides powerful antimicrobial activity that helps to clean the gut and lessen severity of digestive upsets

### 2 MOS

Binds and flushes pathogens from gut to help promote gut integrity and enhanced immunity

### 3 Direct-Fed Microbials

Inhibits pathogen growth and repopulates the gut with beneficial bacteria

*Calf Renova is an easy-to-use capsule containing a unique combination of natural ingredients that work to provide intestinal and immune support — potentially reducing the need for antibiotics.*



TechMix

**Redefining hydration**  
to keep animals  
drinking, eating &  
producing.





# Get your calves started off right, with TechMix



**An easy to use, effervescent oral hydration support supplement for young calves.**

## KEY FUNCTIONAL COMPONENTS:

Electrolytes and energy

## FEATURES & BENEFITS:

- Effervescent, no stirring required
- Flavor designed for calves
- Single serving, no measuring required
- Compatible with water, milk or milk replacer

## WHEN TO USE:

- Calves with digestive upsets
- Transported calves
- Dehydrated calves
- During environment changes



*No stirring required!*



*Provide 1 BlueLite C Hydra Tabs in 1 liter of water (preferably warm water)*



*Highly palatable*



## TECHMIX - CALF SUPPLEMENTS

KVS	DESCRIPTION	SIZE	PRICE
1098-010	BlueLite C Hydra Tabs Electrolyte for Calves	Each	\$5.00
1098-010P	BlueLite C Hydra Tabs Electrolyte for Calves	20 Tablet Pail	\$80.00



# ELECTROLYTES



## FAST

+Rapid absorption helps maintain hydration and electrolyte balance



## FLEXIBLE

**Unique ability to be mixed with water or milk**



## EFFECTIVE

+Specially formulated to support gut health<sup>1-3</sup>

**Diakur® Plus**  
Added flexibility  
for optimal  
support



KVS	DESCRIPTION	SIZE	PRICE
605-095I	Diakur Plus - Individual	100gm	\$5.00
605-095C	Diakur Plus - Case	24x100gm	\$96.00
605-096	Diakur Plus - Pail	3kg	\$105.00
605-097	Calf Bottle With Nipple & Handle	3L	\$10.00
1021-008	Electrolyte Power - Individual	76 Grams - Each	\$6.00
1021-007	Electrolyte Power - Case	24x76gm - Case	\$120.00
1021-007	Electrolyte Power - Pail	4kg	\$130.00





# SxCALF

## ORAL ELECTROLYTE & NUTRITIONAL SUPPLEMENT

# SxCALF

## ORAL ELECTROLYTE NUTRITIONAL SUPPLEMENT

### ADVANTAGES OF SxCALF

- ✓ **Premixed solution** - No tubing required.  
Use a disposable Syringe to administer in the calf's mouth
- ✓ **Rehydrates the calf** and improves fecal consistency more quickly than any other product.
- ✓ **Balances** the microbiota of the calf and supports natural immunity
- ✓ Requires only **one 50ml** oral feeding\* in 90% of cases
- ✓ **Reduces mortality/morbidity** up to 75% versus other products
- ✓ **Saves** time and labor expense
- ✓ **Non-antibiotic / No VFD** required

**\$75** Per 250ML Bottle

Product #1017-001

\*Based on field trials. Some conditions may require additional feedings.







## SELENIUM & VITAMINS A, D & E DOSING HAS NEVER BEEN EASIER



### Vitaferst-Care™

is a convenient oral supplement designed to address the neonatal nutritional needs of calves, lambs and goat kids.

Most production animals' nutrient levels are normal at birth but can be rapidly depleted during the neonatal period. This can limit their potential. That's why supplements are often required when milk is the sole source of nutrients.

#### Vitaferst-Care's Oral Formulation Includes:

- Selenium** to promote growth
- Vitamin A** for promoting neonatal immunity
- Vitamin D** to support growth and metabolism
- Vitamin E** to stimulate the immune system
- Vitamin B<sub>12</sub>** for cell growth and support of the immune system



#### One Oral Dose instead of multiple needles

Draw off cap and oral syringe  
included with every bottle



Give your livestock the best  
start possible with  
**Vitaferst-Care™**

Canadian Patent No. A8144435CA



[avetlabs.com](http://avetlabs.com)

### ALBERTA VETERINARY LABORATORIES - CALF SUPPLEMENTS

KVS	DESCRIPTION	SIZE	PRICE
1021-125	Vitaferst-Care Oral Neonatal Supplement for Ruminants	250 mL	\$60

# COLOSTRUM



**TWINS ?  
AN ORPHANED CALF?  
YOU WILL NEED  
COLOSTRUM!**



<u>KVS</u>	<u>DESCRIPTION</u>	<u>PRICE</u>
1130-002	Just Like Mom-50IgG - 350G	\$20.00
062-002	Immustart 50IgG - 400G	\$25.00
062-120	Immustart 120IgG - 550G	\$60.00



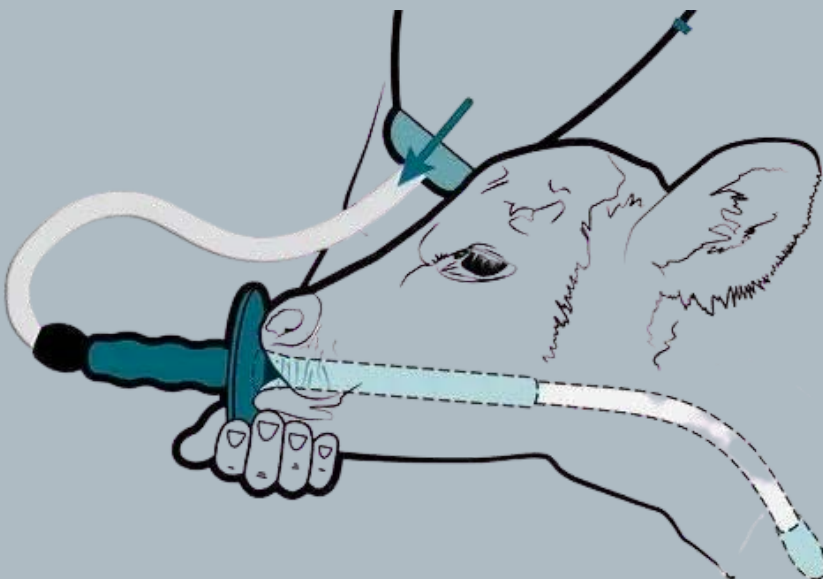
# Trusti Tuber

## PRODUCT BENEFITS



Treat animals up to  
**200kg**

The only drencher also able to  
relieve free gas rumen bloat  
and to treat adult sheep,  
goats and alpaca



943-750

# Feeders



943-850



943-851



943-860



CLEANING BRUSH FOR TUBE  
943-740

# Replacement Parts



Nipple Replacement  
943-761N



Vent Only  
943-764



Peach Teat-Pull Through  
943-761D



Peach Teat-Threaded  
943-759

KVS	DESCRIPTION	PRICE
943-750	Trusti Tuber Kit With Bottle, Nipple and Tuber	\$70.00
943-850	Stallion Milk Maid Calf Feeder w/ 3 Teats	\$150.00
943-851	Stallion Milk Maid Calf Feeder w/ 5 Teats	\$199.00
943-860	Stallion Milk Maid Calf Feeder W/ 1 Teat	\$25.00
943-740	Cleaning Trush	\$20.00
943-761N	Nipple Replacement - New	\$8.00
943-764	Vent	\$8.00
943-761D	Peach Teat Pull Through <b>** Discontinued **</b>	\$8.00
943-759	Peach Teat Threaded	\$8.00





# THE BEST VACCINE FOR SCOURS, ISN'T A VACCINE.

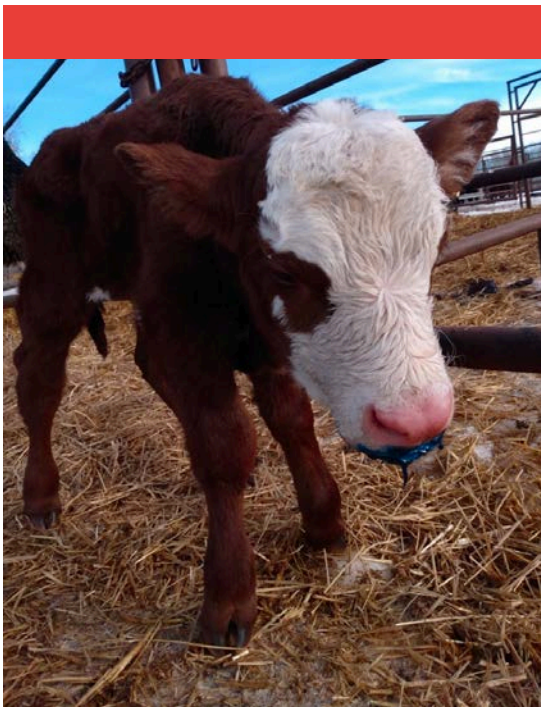


## DUAL-FORCE GEL TUBE OR BOLUS



✓ Coronavirus

✓ K99 + E.coli



**VERIFIED ANTIBODIES**  
Equally protected calves

- Improved survival
- Fewer treatments
- Decreased environmental contamination, reduced pathogen shedding by calves

**CALF-LEVEL ADMINISTRATION**  
Targeted investment

- One Dose=Immunity
- No wasted costs on DOAs or calves not valuable to the operation

**IMMEDIATE IMMUNITY**  
No vaccination stress

- Removes a shot from the vaccination protocol, allowing cows to maximize response rate to other vaccines
- No risk of late-term abortions or endotoxin loading

**EASY TO ADMINISTER**  
Full benefit from your dollar

- Vs. oral modified-live vaccines, which are 100% inactivated when administered w/ colostrum, 90% inactivated when colostrum is delayed 30 minutes
- Vs. dam-level scour vaccines, which are ineffective when there is protocol drift



12 single-dose gel tubes per box.  
Store refrigerated.

### DIRECTIONS

Administer Dual-Force® orally after birth. Remove cap, place tip at the back of the throat, toward the cheek pocket. Initiate the plunger and over a few seconds, slowly squeeze entire tube contents into the calf's mouth, ensuring the calf swallows all of the gel. Dual-Force can be administered at the same time as colostrum.

### PROTOCOL TRACKER

Blue dye is non-digestible, serving as a tracker through the system to ensure the calf received treatment. First fecal stool after administration will be blue-green in color.

## DUAL-FORCE

KVS	DESCRIPTION	RETAIL
791-003	First Defense 5's	\$90.00
791-001	First Defense 30's	\$520.00
791-002	First Defense Dose Gun	\$5.00
791-005	DualForce12s	\$220.00



# CALF COATS

BACK BY  
POPULAR DEMAND

*Cold-weather protection for newborn calves*

## RIPSTOPP CALF COAT

- 70 cm total length
- Plastic buckles – easy to use with gloves
- Tear-resistant Ripstopp material
- Water repellent
- Lightweight but durable



**\$55.00**

## THERMO PLUS CALF COAT



- 70 cm total length
- Heavy-duty metal front buckle
- Polyfleece filling
- Designed for extreme cold conditions
- Excellent heat retention

**\$55.00**

## PREMIUM CALF COAT

- 80 cm total length
- Velcro closures for fast on/off
- 4-layer construction with foam layer
- Maximum warmth and coverage
- Ideal for harsh winter calving



**\$60.00**

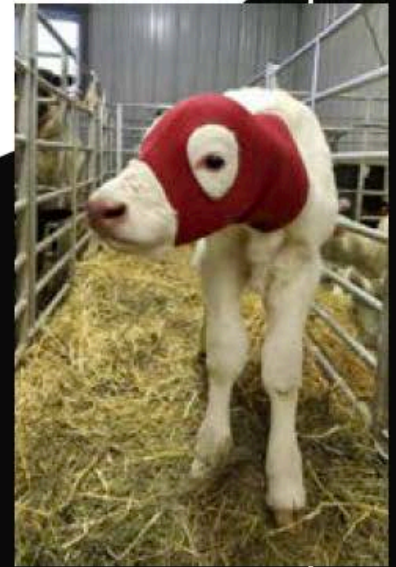




# Bala-Calfa

The Bovine Balacava

NEOPRENE CALF HOOD TO PREVENT  
EARS FROM FREEZING AT CALVING



Hoods are moisture resistant & machine washable



## SIZING

SMALL 60-75 lbs

MEDIUM 75-90 lbs

LARGE 90-105 lbs

\$25 Each





**\$31 Each**



### *Points that we want to make*

Faux leather ear-tag that allows you to put the calf's tag number on it, and then wash it off when you put the Kozie on another calf. Our special grease markers are water-resistant

6

7 Allows for normal movement and positioning of the calf's ears, avoiding sores, lack of circulation, or sweaty ears

8

Flexible nose band allows the calf to suck and eat as normal

9

The Kalf Kozie's are machine washable for easy cleaning

10

Bright color selection for easy spotting in a herd and at night in the pens

11

Water-resistant coating for added warmth on cold, wet days

1

High-quality, heavy-duty polar fleece that wicks away moisture and provides durable warmth

2

Stainless metal snaps for adjustable neck size to accommodate any breed of calf, and any size of calf that would need it



3

One size fits all – Easy and fast to adjust with **no Velcro** pieces to gather dirt or straw, or let loose and fall off

4

Stretchable fabric that molds to the shape of the calf's head without being too tight

5

Easy and quick to put on and take off





# Traditional Tools

If It Ain't Broke Don't Fix It



115-780



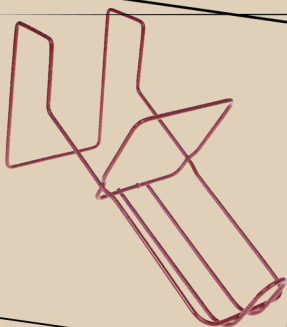
115-760



115-797



115-784



055-103



055-105



044-134



044-118

KVS	DESCRIPTION	PRICE
115-780	Nursing Bottle With SNAP On Nipple 2 qt	\$10.00
115-790	Nursing Bottle With SCREW On Nipple 2qt	\$10.00
115-760	Plastic Calf Pail With Nipple and Hooks	\$36.00
115-797	Nursing Bottle 3 QT With Snap on Nipple	\$11.00
115-784	Replacement Nipple - Snap on	\$5.00
115-800	Bottle Holder- Works best with 2 qt bottle	\$14.00
055-103	Springer Magrath Crimp Style Fluid Feeder w/ Probe Nipple	\$30.00
055-105	Attachment for 055-103	\$7.00
044-134	Kerble Adjustable Nylon Cattle Hobble	\$35.00
044-118	Cattle Boss Cow Hobble - 12"-21" - Metal Buckle	\$105.00



# Traditional Tools



KVS	DESCRIPTION	PRICE
034-303	Dr. Franks Calf Puller	\$535.0
034-043	Save - A Calf Snare	\$70.00
376-830	OB Saw With Handles	\$13.00
223-042	OB Chain 30"	\$10.00
223-044	OB Chain 60"	\$12.00
223-043	OB Chain + Handle Pack 30"	\$20.00
223-045	OB Chain + Handle Pack 60"	\$25.00
266-100	Calf Catch With Hook	\$140.00
239-033	Thermometer - Digital Celsius	\$10.50
239-066	Thermometer - Digital Fahrenheit	\$10.50
082-328	Crayon - Random Color	\$3.00
044-301	Calf Sling - Regular	\$80.00
044-305	Calf Sling - Large	\$95.00
376-948	Scale - Hanging Dial 100 KG	\$50.00
147-534	Disposable Scalpel	\$3.00
128-003	Balling Gun Plastic Large	\$20.00
223-020	Balling Gun Metal Large	\$25.00
046-401	Stomach Tube	\$44.00



044-305



# LUBRICANTS



**Jorvet™**



100-041

## **J-Lube**

*is a concentrated powder that dissolves easily in water and is a very effective obstetrical lubricant. J- LUBE is completely inert and non-irritating.*

## **J-Jelly**

*An ideal all around lubricant for rectal and obstetrical procedures. Contains methylcellulose.*



100-042

## **KVS**

## **DESCRIPTION**

## **PRICE**

100-041

J-Lube Powder 10 oz

\$40.00

100-042

J-Jelly 8 oz

\$13.00





873-002



873-002



024-006



024-612



024-368

873-004

## Red-Kote

A NON-DRYING, SOOTHING, AND SOFTENING SKIN TREATMENT THAT STIMULATES NEW, HEALTHY SKIN GROWTH WHILE DISCOURAGING SCAR TISSUE FORMATION.

## Udder Balm

ANTISEPTIC EMOLLIENT OINTMENT FOR UDDERS AND TEATS. MAINTAINS NATURAL SKIN MOISTURE, RELIEVES SORENESS, KEEPS TEATS AND UDDERS SOFT AND HEALTHY.

## DISINFECTANTS

KVS	DESCRIPTION	Size	RETAIL
024-006	Virkon	50gm	\$10.00
024-368	Virkon	500 gm	\$55.00
024-612	Virkon Tabs	50s	\$50.00



### VITAMIN ADE

Vitamins A, D3 and E in a unique water soluble liquid.

### Iodine Spray

Antiseptic for use on horses, cattle, swine and sheep.



### Blood Stop

Stops bleeding of minor cuts and wounds

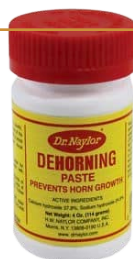
### Scarlet Oil

Treatment of superficial lacerations, cuts, and burns.



## HEALTH CARE

KVS	DESCRIPTION	Size	RETAIL
873-003	Dehorning Paste	4oz	\$12.00
873-002	Red Kote	5oz	\$16.00
873-004	Udder Balm	13 oz	\$20.00
002-389	Scarlet Oil	250 ML	\$15.00
002-552	DVL Vit.ADE Liquid	500ml	\$27.00
002-583	Iodine Spray 1%DVL	500ml	\$22.00

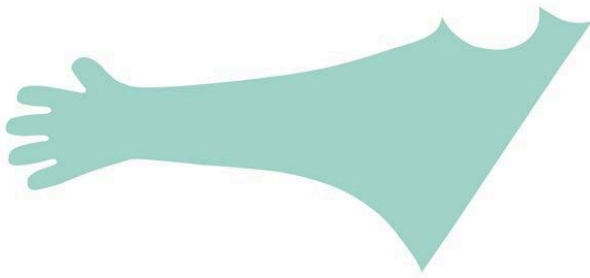




# Disposable Glove Shoulder Protection

## MOST POPULAR

Self-adhesive  
very sensitive  
Single-use only  
Food safe



## OB Sleeve Gloves

Durable and sensitive, OB sleeve gloves are shoulder length, latex free and ready to the job done.

species



## X3 - Nitril Gloves

Industrial-grade nitril  
Perfect where frequent glove changes are required



### OB GLOVES

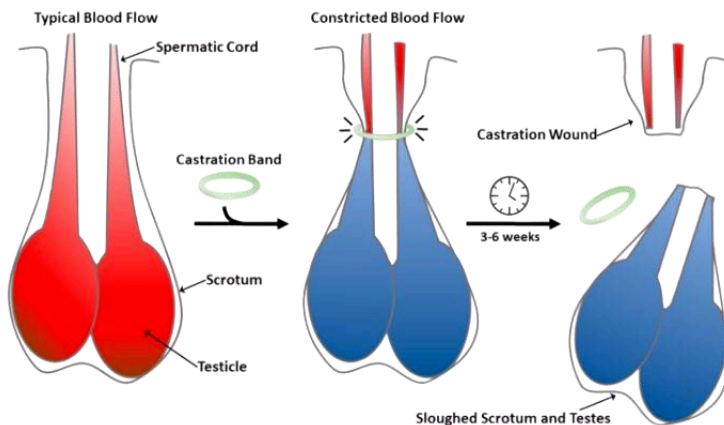
KVS	DESCRIPTION	SIZE	RETAIL
1065-100	OB Gloves - Clear - 100pk	1.25 mm	\$15.00
15376	OB Shoulder Protection - 50 pk	One Size	\$22.00
971-012	X3 Blue Nitril Gloves - 100 pk	Large	\$17.00
971-013	X3 Blue Nitril Gloves - 100 pk	X-Large	\$17.00



# **CASTRATING EQUIPMENT**



324-301  
324-302



KVS	DESCRIPTION	PRICE
324-301	Callicrate Bander Kit	\$660.00
324-302	Bands For Callicrate Bander- Each	\$6.00
615-003	Bander XL	\$160.00
615-008	Bander XL - Bands	\$48.00
223-010	Elastrator Pliers	\$15.00
262-117	Elastrator Rings - Small Green 100 Pack	\$4.00
633-001	Cow Magnet -Sundown w/Polished Steel End Caps & Steel Rings	\$6.50 -Each
633-001C	Cow Magnet - Case of 12	\$60.00
223-020	Balling Gun Metal Large	\$25.00



223-010

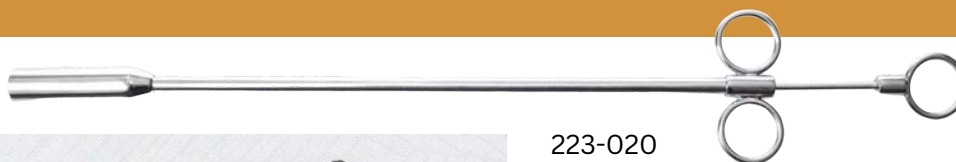


223-010

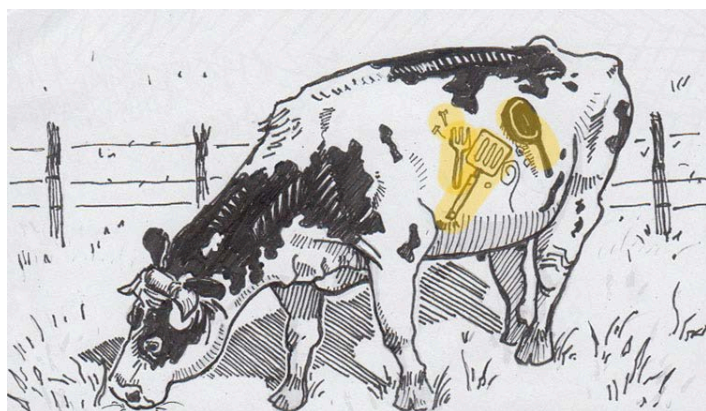


615-003  
615-008

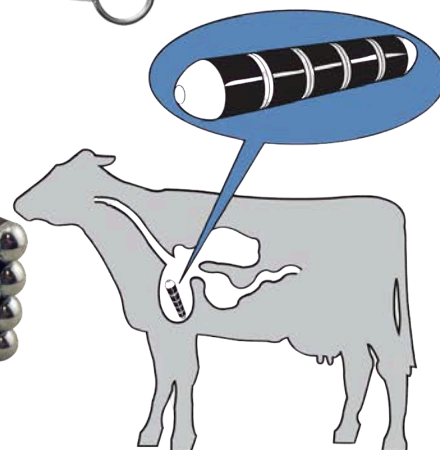
## **Prevent Hardware Disease**



223-020

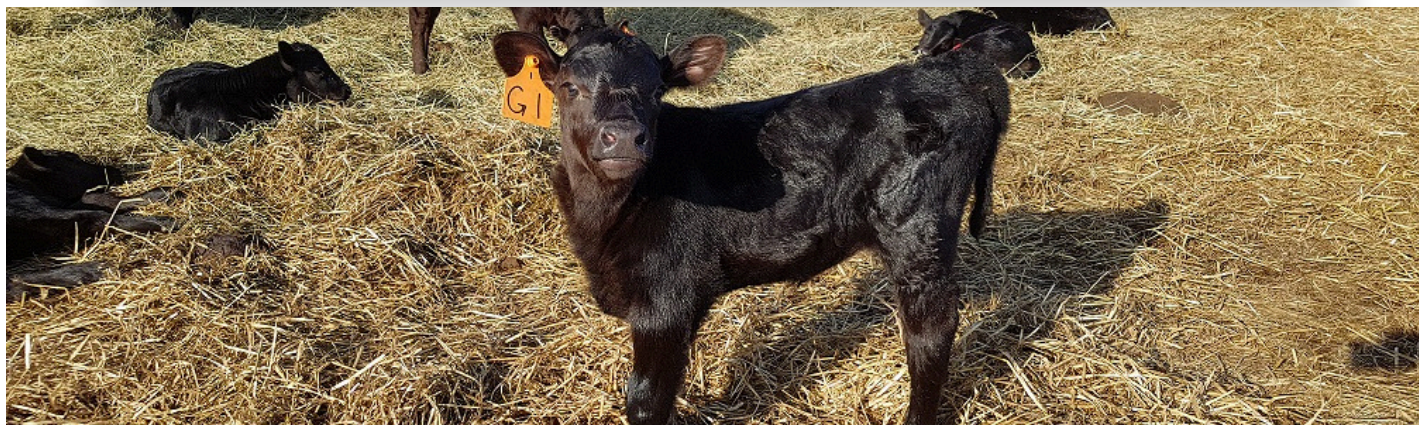


633-001





# REPEATER SYRINGE



**25MR2**

**Product Code: 25MR2**  
(Adjustable dosage from .5ml to 2.5ml)



**50MR2**

**Product Code: 50MR2**  
(Adjustable dosage from 1ml to 5ml)



- Accurately delivers selected dose
- Easy grip for high volume use
- Barrel and needle attachment are fully autoclavable
- Streamlined design with fewer replacement parts
- Amber-colored barrel reduces UV sunlight exposure
- Color Knob Pack available to differentiate between medications

## Multimatic

### DURABLE PRESSURE-CAST ALUMINUM HANDLE

- EXCEPTIONAL DURABILITY, YET LIGHTWEIGHT
- DURABLE MEDICAL GRADE PLASTIC BARREL
- WITH METAL NEEDLE FITTING
- CHEMICALLY RESISTANT TO ALL KNOWN MEDICATION
- UV-RESISTANT AND BREAK-PROOF
- EASY DOSE SETTING
- VIA 0,5ML (25 ML) OR 1ML (50 ML) DOSAGE WHEEL



KVS	DESCRIPTION	PRICE
044-600	Allflex 25 ML	\$145
044-800	Allflex 50 ML	\$145
HSW3650030051	Multimatic 50 ML	\$140
103248	Prima Shot 25 ML	\$120
103249	Prima Shot 50 ML	\$120



# PREMIUM SYRINGES AND ACCESSORIES

## PRIMA-SHOT™

PATENTED  
DESIGN

### Prima-Shot

Prima-Shot Repeater Syringe features 10 fixed-dose settings for precise accuracy. Triton barrel with large numbers for easy viewing. Features easy-grip dose adjuster dial. Includes four colored knobs for easy identification. Prima-Shot 50 ml Repeater Syringe adjusts from 0.5 to 5 ml in 0.5 ml increments. Prima-Shot 25 ml Repeater Syringe adjusts from 0.25 ml to 2.5 ml in 0.25 ml increments. Prima-Shot with amber barrel is packaged in premium box with colored tabs. Prima-Shot with clear barrel is packaged in a clear bag with header card.

Prima-Shot Repeater Syringe	
Size	Item Code
50 ml Prima-Shot Repeater Syringe w/ Amber Barrel	367723

### 50 ML PRIMA-SHOT

#367723



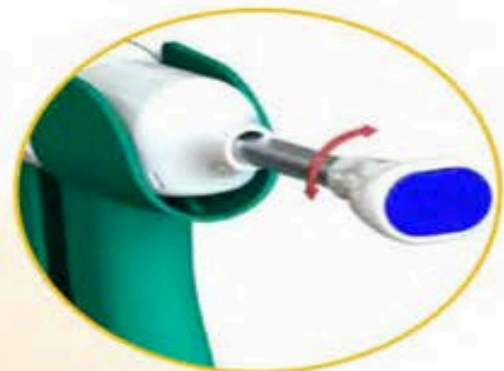
Interchangeable colored  
pull knob inserts



Prima-Shot Repeater Syringe	
Size	Item Code
25 ml Prima-Shot Repeater Syringe w/ Amber Barrel	377210

### 25 ML PRIMA-SHOT

#377210



Unique rotating pull knob  
to conveniently fill and engage

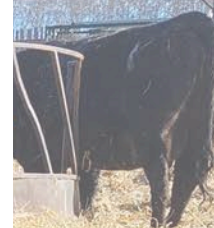




# SIZE MATTERS



GAUGE	LENGTH	INJECTION TYPE	APPLICATIONS
14	1"	IM	CATTLE, HORSES
	1 1/2"	IM	CATTLE, HORSES
	2"		CATTLE, HORSES
16	1/2"	SQ	CATTLE, HORSES
	3/4"	SQ	CATTLE, HORSES
	1"	IM	CATTLE, HORSES, SWINE
	1 1/2"	IM	CATTLE, HORSES, SWINE
18	3/4"	SQ	CATTLE, HORSES, SWINE, SHEEP, GOATS
		IM	CALVES, BABY PIGS
	1"	IM	CATTLE, HORSES, SWINE, SHEEP, GOATS
	1 1/2"	IM	CATTLE, HORSES, SWINE, SHEEP, GOATS
20	1/2"	SQ	HORSES, SWINE, SHEEP, GOATS, FOWL
		IM	BABY PIGS
	1"	IM	HORSES, SWINE, SHEEP, GOATS
	1 1/2"	IM	HORSES, SWINE, SHEEP, GOATS
22	3/4"	SQ	SMALL ANIMALS
	1"	IM	SMALL ANIMALS



## KVS

## Size

034-223	16x1 1/2"
034-222	16 x 1"
034-221	16X3/4"
034-220	16X5/8"
034-227	18x1 1/2"
034-226	18 X 1"
034-224	18X3/4"
034-225	18X5/8"
034-228	20X1/2"
034-229	20 x 1"

\$0.70  
Each

Please choose a  
quantity divisible by  
10



# **Disposable Syringe**

## **Luer Lock**

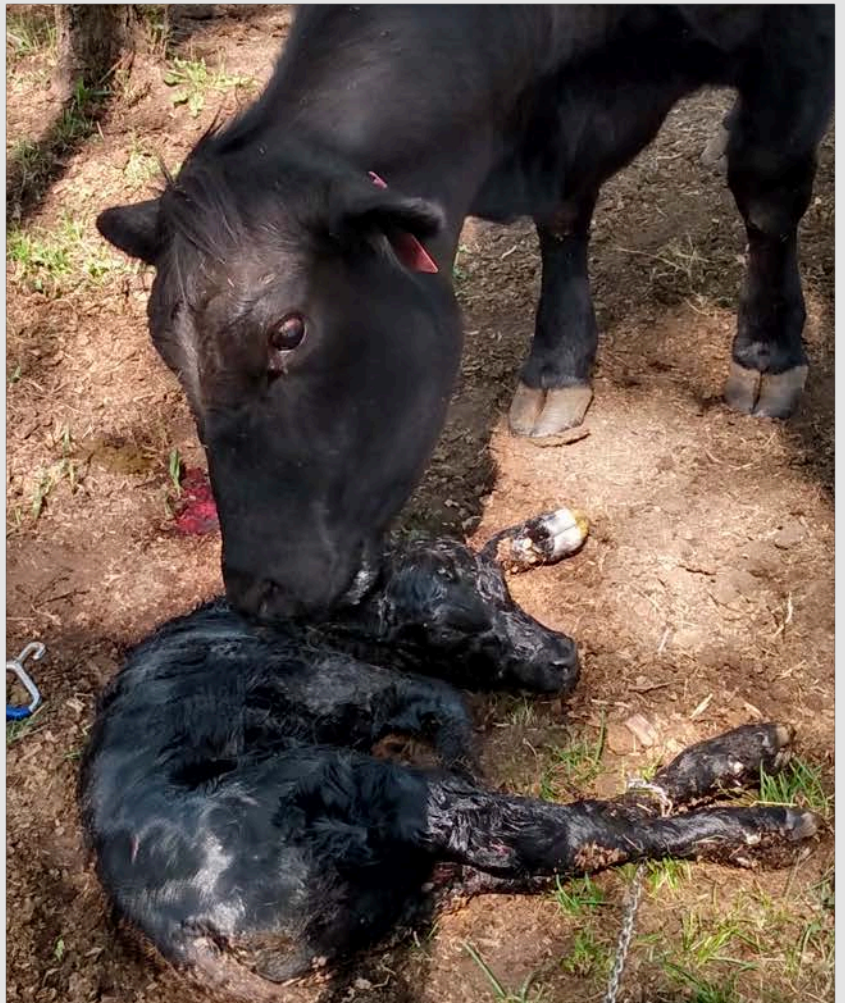


KVS	DESCRIPTION	PRICE
034-071	Disposable Syringes Luer 3cc	\$0.40
034-076	Disposable Syringes Luer 6cc	\$0.40
034-081	Disposable Syringes Luer 12cc	\$0.40
034-091	Disposable Syringes Luer 35cc	\$1.30
034-096	Disposable Syringes Luer 60cc	\$1.95



**Please Order In Multiples of 5**





**REAL**

@J2 LIVESTOCK

**LIFE**

The HK Rheintech calf resuscitator looks like a large air pump. The suction cup is placed over the calf's nose and mouth.

- 1) Mucus is removed from the respiratory tract in one powerful stroke.
- 2) The lung's lobes and alveoli can unfold

**376-044 Calf resuscitator**

**\$199**



# Put your vaccine to work.



## COLOR-CODED VACCINATION/MEDICATION ORGANIZATION COOLER SYSTEMS

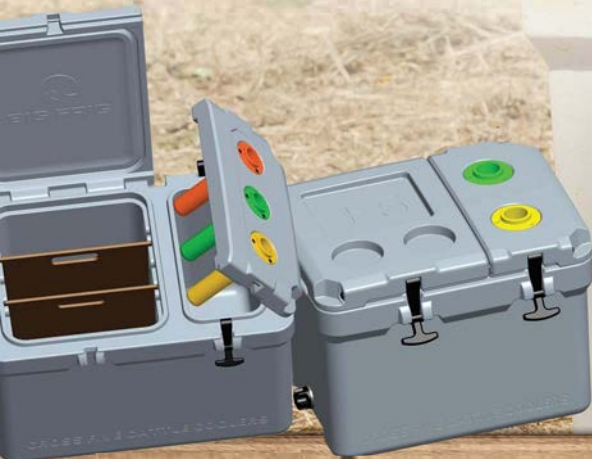
### COOLER SYSTEM OPTIONS:

3 Holster Ranch Hand Cooler System:  
53 Qt.- Designed to work approx 400  
head Includes 2 dividers & utility tray \$349.. . . !

·TUBE-LIKE SYRINGE HOLSTERS WITH CAPPED ENDS THAT FIT ALL BARREL SYRINGE

- DUAL COMPARTMENTS
- REMOVABLE LEFT COMPARTMENT DIVIDERS
- CUSTOM UTILITY TRAY
- 5 DAY ICE/ HEAT COMPATIBLE

- ONE PIECE ROJO-MOLDED CONSTRUCTION FOR DURABILITY
- FILLED WITH POLYURETHANE FOAM FOR SUPERIOR INSULATION
- DOUBLE DRAIN PLUGS

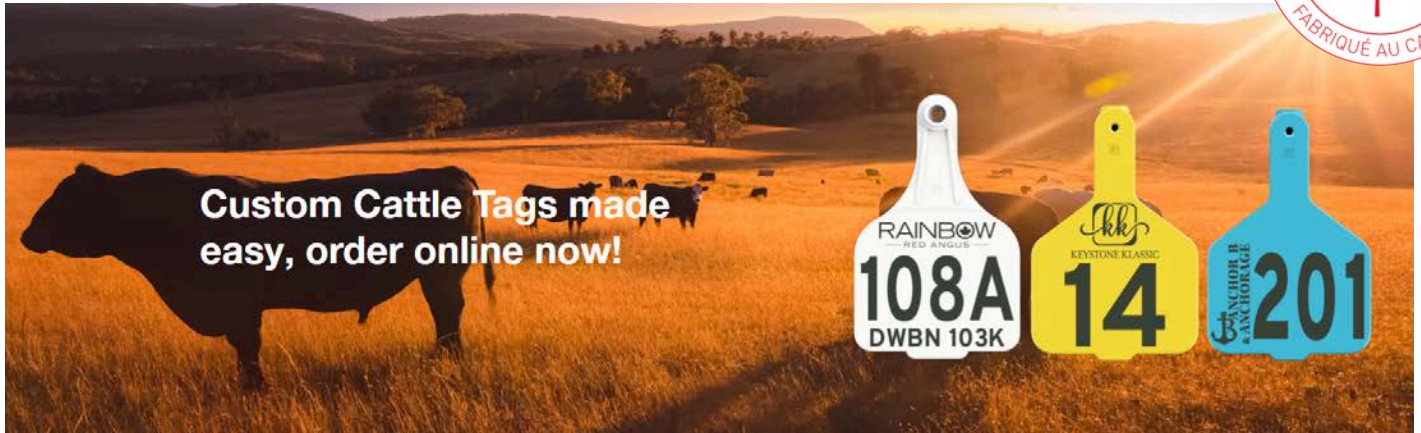


  
CROSSFIVECATTLE COOLERS,LLC  
WWW.CROSSFIVECATTLECOOLERS.COM





# **Leader Products**



2PSM7  
Super Maxi Female



2PMX6  
Maxi Female



2PL5  
Large Female



CAT7  
Calf Tag



MMI4  
Mini Male



FT011  
Feedlot Tag One



FT4  
Feedlot Tag



CTW3  
Cow Tag Wide Neck





# IMAGINATION

IS THE LIMIT







Feedlot A

Large - Maxi

Super Maxi

A-Tags



Feedlot- A



A-Maxi



A-Super Maxi



A-Calf



Feedlot



044-000A  
044-000L



044-000W  
White

Black    Yellow  
Blue    Purple  
Green    Red  
Orange    White  
Pink

## Tag Accessories



044-001



044-080



044-005



044-010



363-150

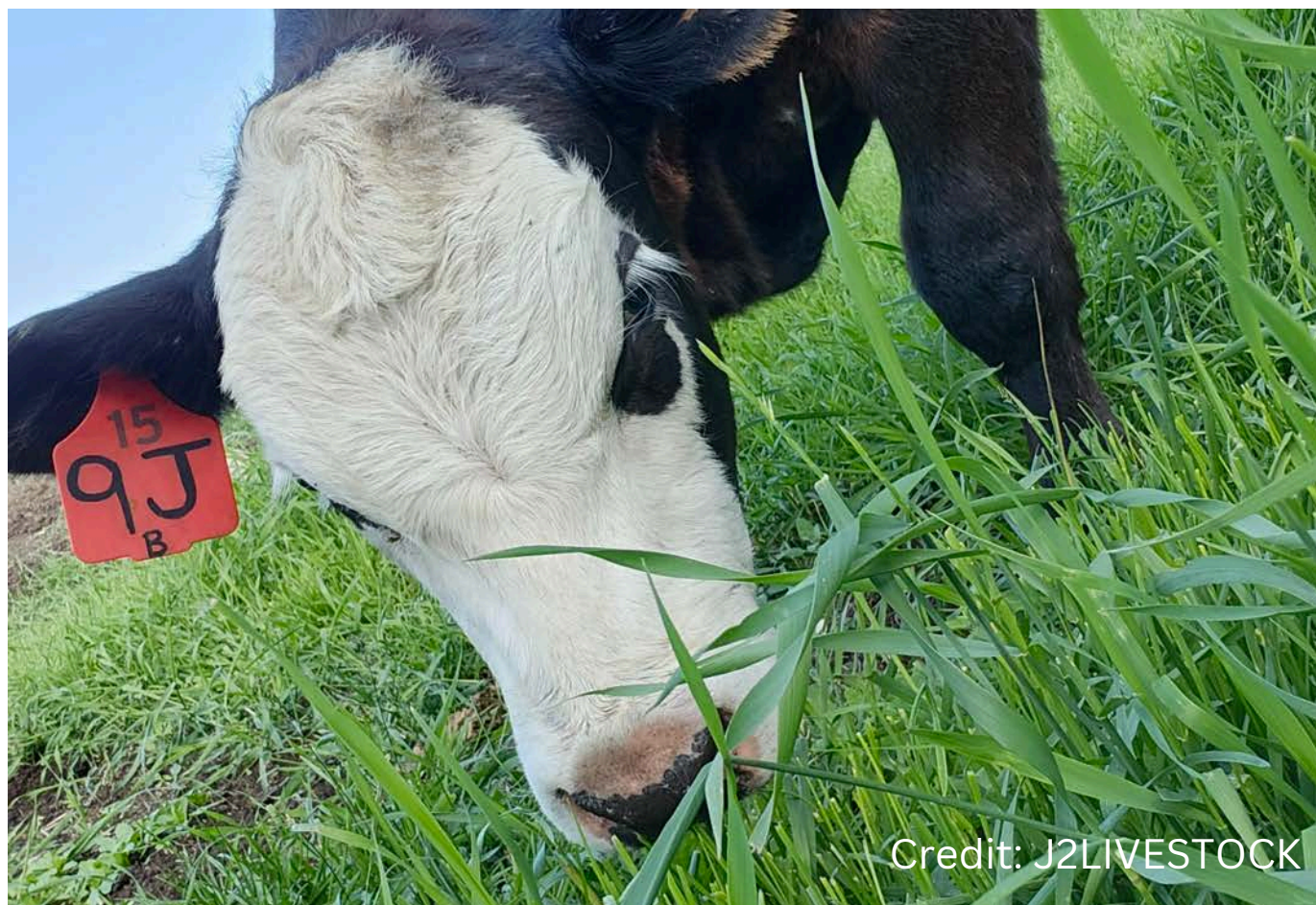


KVS	LEADER PRODUCTS	Blank	Custom Lazer Up To
L-Super Maxi	Blank - 25 Pack	\$49.00	\$2.50 Each
L-Maxi	Blank - 25 Pack	\$46.00	\$2.40 Each
L-Large	Blank - 25 Pack	\$41.00	\$2.30 Each
L-Calf Tag	Blank - 25 Pack	\$40.00	\$2.30 Each
L-Feedlot One	Blank - 50 Pack	\$38.00	\$1.90 Each
L-Feedlot	Blank - 50 Pack	\$35.00	\$1.80 Each
L-Cow Tag	Blank - 25 Pack	\$45.00	\$2.40 Each

**CUSTOMIZE YOURSELF @ [WWW.LEADERPRODUCTS.COM](http://WWW.LEADERPRODUCTS.COM)**

KVS	ALLFLEX PRODUCTS	Blank
A-Super Maxi	Blank - 25 Pack	\$53.00
A-Maxi	Blank - 25 Pack	\$51.00
A-Large	Blank - 25 Pack	\$46.00
A-Calf Tag	Blank - 25 Pack	\$43.00
A-Feedlot A	Blank - 50 Pack	\$40.00
A-Feedlot	Blank - 50 Pack	\$40.00

KVS	TAG ACCESSORIES	PRICE
044-000	2-in-1 (Fine/Broad) Marking Pen -	\$10.00
044-001	Black Universal Total Tagger - Red	\$47.00
044-080	A-Tag Applicator - Yellow Manual	\$47.00
044-005	Feedlot Applicator - Orange UTT3S	\$122.00
044-010	Tag Applicator - Blue / Gray	\$72.00
363-150	Tag Cutter	\$6.50



Credit: J2LIVESTOCK



# **LAMB & MULTI-SPECIES**

## **LAMB**



376-646



376-849



376-860



943-749



115-801

## **MULTI-SPECIES**



1021-008  
Electrolyte 76 G  
\$5.00



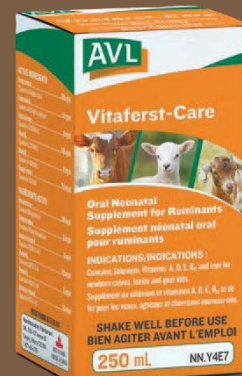
002-583  
Iodine  
\$22.00



002-552  
VitamineADE  
\$27.00



873-003  
Dehorn Paste  
\$12.00



1021-125  
VITA-FERST  
\$60.00

943-749	Trusti Tuber Lamb & Goat	\$21.00
475-015	Grober -Lamb/Kid Colostrum	\$70.00
376-646	Kerbl Anti-Vac Lamb Bottle	\$11.00
376-860	Lamb Multi Feeder Bucket 5 Teat	\$32.00
115-801	Lamb Soda Bottle Nipple - 12PK	\$20.00
376-849	OB Lamb Snare	\$10.00

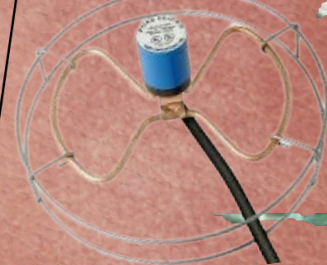




216-418



216-210



216-215



281-249



600-005



426-912



281-253



115-517



115-889



115-525



115-423

Cord Connect  
Water Tight

## KVS

## Description

## Retail

216-215	Submersible Deicer 1500wt	\$60.00
216-210	Floating Deicer 1500 wt	\$50.00
216-418	Floating Deicer Poly Tank Safe	\$69.00
600-005	Floating Deicer- 1500 Red	\$56.00
281-249	Screw Eye with 2" Ring	\$3.00
216-430	Cord Connect - Water Tight	\$20.00
426-912	SnapSpring 4"	\$5.00
281-253	Snap Bolt Double End	\$5.00
115-517	Bucket-Hook Over 8	\$19.00
115-889	Bucket Utility 10qt	\$12.00
115-525	Bucket-Flat Back 20qt	\$17.00
115-423	Rubberpan-8qt	\$14.00



# OVERSIZED ITEMS



## Calf Warmer

The Calf Warmer creates a comfortable, enclosed environment for newborns during the critical hours after birth.

**\$810**



## Hip Huggers (Cattle Lift)

Indispensable device for cows that cannot get back on their feet.

**\$265**



## Koenders Mineral Feeder

- Circular shape allows the feeder to be manouvered easily into place.
- 3 compartments for salt or mineral blocks.
- Removable top allows for easy training for new animals

**\$299**

## Calf Sled

The sled is designed so the cow can see and smell her calf while safely in the sled. The slot allows the hind leg to be secured ensuring the calf will not roll out.



**\$210**



# *Notes*





**Back of the back  
cover**

**Leave Blank**