

hair like new

NO MATTER WHAT YOU PUT IT THROUGH



**K18Peptide™ is the breakthrough molecule haircare was waiting for.
Clinically proven to reverse damage in just 4 minutes.***

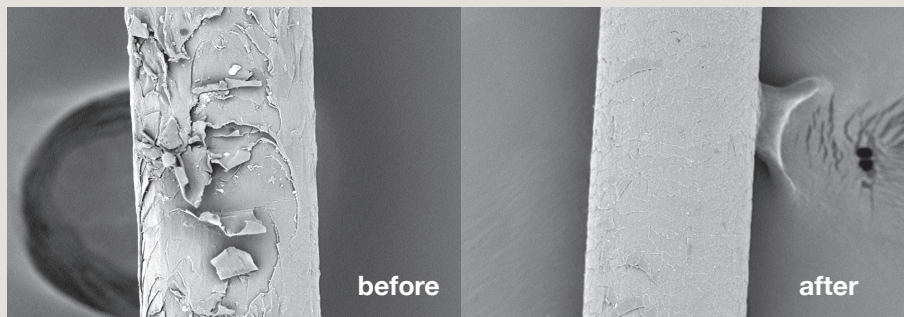
just one salon treatment restores hair up to

91%

original strength*

94%

original elasticity*



*Results observed in a clinical study while using mist and mask as part of a bleaching treatment. Results may vary depending on hair type, quality and history.

how to use K18 as part of a lightening or color service

1. Prep hair by lightly misting with water.
2. Section hair. Apply **K18 MIST** section by section. (The amount required depends on hair length, thickness and condition, see chart.)
3. Wait 4 minutes. **DO NOT rinse.**
4. Apply lightener/color directly on top of **K18 MIST**. (Dry hair if needed prior to application). Process as usual.
5. Shampoo, **do not condition.**
6. Towel-dry thoroughly.
7. Apply **K18 MASK**. (The amount required depends on hair length, thickness and condition, see chart.) Work evenly into hair from ends to roots, one pump at a time.
8. Wait 4 minutes. **DO NOT rinse.**
9. If toning, apply toner/gloss on top of **K18 MASK**. Process toner/gloss as required. Rinse/shampoo toner. Towel-dry thoroughly. Follow with secondary application of **K18 MASK** following instructions above. Style as usual.
10. Have clients continue treatment at home with leave-in **K18 MASK**.

			fine/thin	medium	thick/coarse
short (chin-length or shorter) 	mist		1-2 sprays/section	2-3 sprays/section	3+ sprays/section
	mask		1 +/- pump	1-2 pumps	2 pumps
medium (shoulder length) 	mist		2-3 sprays/section	3-4 sprays/section	4+ sprays/section
	mask		1-2 pumps	2 pumps	2-3 pumps
long (mid-back length) 	mist		3-4 sprays/section	4-5 sprays/section	5+ sprays/section
	mask		2 pumps	3 pumps	4+ pumps

1 pump = 1ml = 1 dime-size