

Rosehill Reservoir Rehabilitation

Summerhill Residents Association

January 23, 2019.



What We've Done So Far

Phase 1: Completed Activities	Phase 1: Remaining Activities
<ul style="list-style-type: none">• Trees: 174 Total<ul style="list-style-type: none">• Preserved 79 (four (4) were transplanted)• Preserved w injury 21• Removed 74• Preserved Rosehill Garden plants by transplanting to Avoca Beds & Collaborating with Garden Volunteers• Effort to recoup schedule by:<ul style="list-style-type: none">• Adding Saturday work hours<ul style="list-style-type: none">• 2018: 2 of 8 Saturdays• 2019: will start January 26 (weather permitting)• Increasing trucking (ie. soil removal) at Rosehill by adding two (2) access points<ul style="list-style-type: none">• 12 trucks per hour• Advanced construction schedule for washroom• Maintained Little Park features (instead we used street parking spaces on Summerhill Avenue) for large truck deliveries to Valve House<ul style="list-style-type: none">• Will continue in 2019	<p>Reservoir Exterior:</p> <ul style="list-style-type: none">• Removal of soil - 70% completed• Removal of membrane - 15% completed <p>Reservoir Interior: on schedule</p> <ul style="list-style-type: none">• Structure rehabilitation• Mechanical and electrical systems• Two additional valve chambers

Soil Removal from Valve House to Avoca

In order to avoid trucking and soil removals through little park, a 4-step process as shown in this image is used by the contractor:

1. Large CAT (excavator) removes soil from Valve house area to the slope
2. Mini-excavator moves to the loader on top of the reservoir
3. Loader transports the soil to Avoca material handling area
4. Excavator loads the soil into trucks for removal off site.



Phase 2A

February - July 2019

Phase 1 + 2A Hoarding



Access to Garden maintained



Temporary 3-week closure @ Playground



Revised Phase 2 Construction Schedule

Advancing work schedule for Phase 2

	What's to Come Phase 2A: February to July, 2019
Phase 2A Eastern Perimeter Area	<ul style="list-style-type: none">• Reservoir & Infrastructure Work:<ul style="list-style-type: none">• Trees:<ul style="list-style-type: none">• Continue Tree Root Exploration• Install Tree Protection & Tree Removals prior to Migratory Bird season• Remove Park Features• Rehabilitate Perimeter Drain System• Access to Garden: via Little Park/ Summerhill Entrance
Temporary three-week closure Blue area	<ul style="list-style-type: none">• Reservoir & Infrastructure Work<ul style="list-style-type: none">• Continue Tree Root Exploration• Install Protection & Tree Removals prior to Migratory Bird Season• Notice will be provided if this closure affects access to the Garden• Playground will not be impacted• Will reopen after works are completed

Phase 2A Ravine Access



Open
(except during 3-week closure)

Phase 2B Access

August - December 2019

Full Park Closure

Open Park Spaces

- Little Park
- Avoca Plant Beds

Access

- All Ravine Accesses will be closed, except Avoca Access to Ravine Trails



Revised Phase 2 Construction Schedule

	What's to Come: Phase 2B July to December (per March 2018 Notice)
Full Park Closure (except Little Park & Avoca Beds)	<ul style="list-style-type: none">▪ Realign hoarding▪ Reservoir & Infrastructure:<ul style="list-style-type: none">▪ East Cell/Basin Exterior:<ul style="list-style-type: none">▪ Remove park fixtures and garden▪ Remove soil▪ Remove & replace waterproofing membrane▪ West Cell/Basin: Continue with Phase 1 Interior & Exterior Activities▪ Park Enhancement Plan - potentially begin installing▪ No Access from ravine trails or via Little Park

Little Park: Watermain Work

Watermain at end of service life

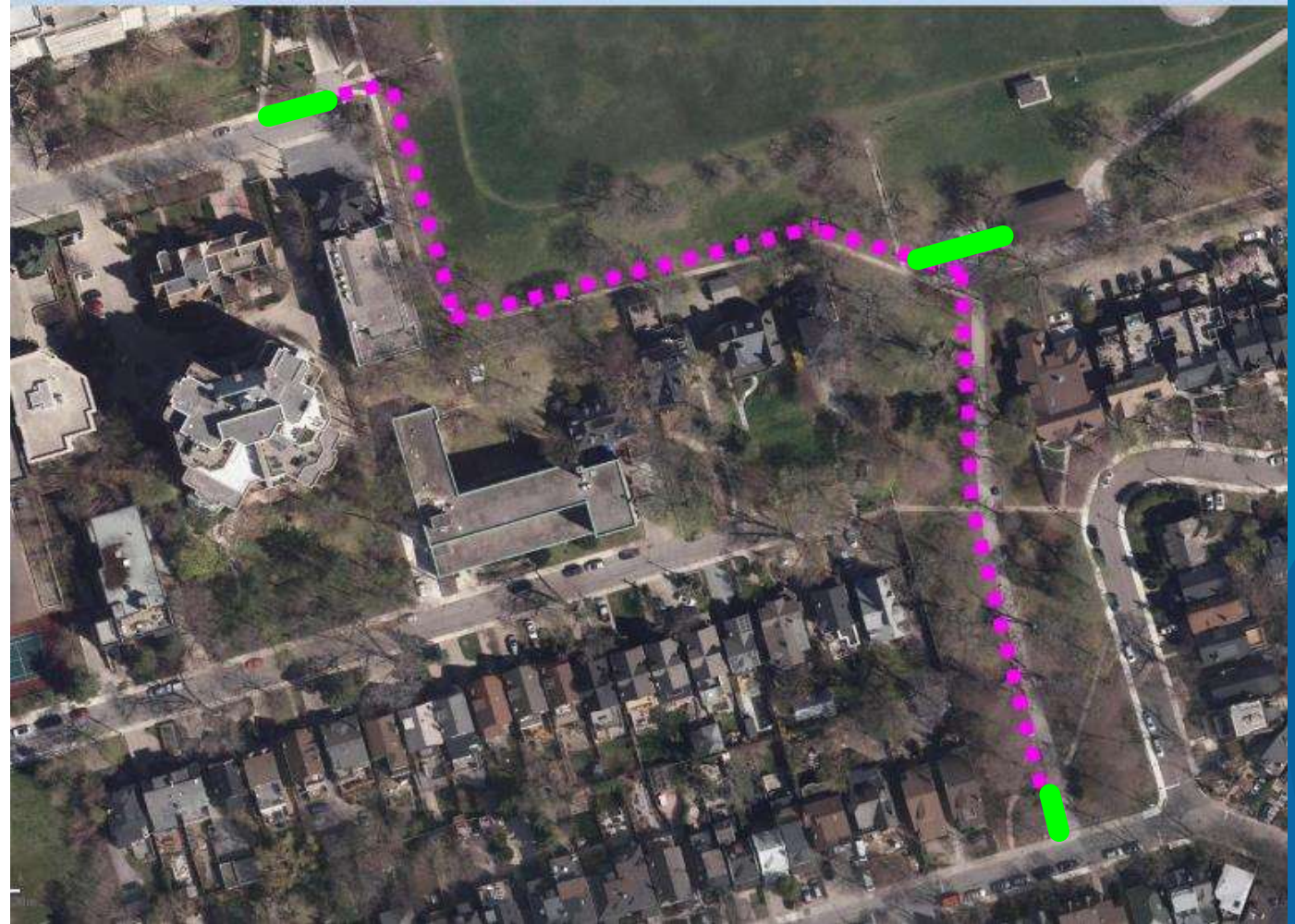
- Opportunity to make park upgrades
- Expanded Park Design scope to include Little park
- Tree Root Investigations results will help confirm Directional Drilling (reduce impacts to trees)

Timing: will be determined (Original March 2018 Notice had this for Phase 3)

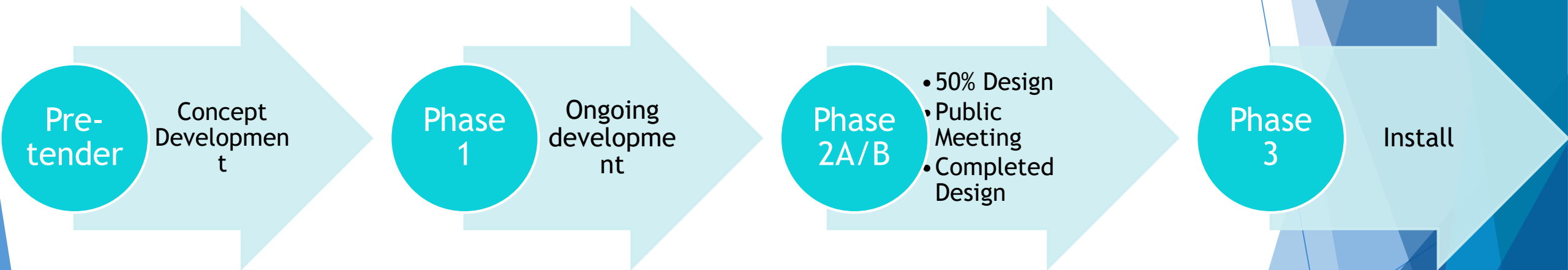
Open Cut (with fast fence)



Directional Drilling



Park Design Process



Ph. 3 Little Park Considerations

Construction Notice #5: Once park elements of the enhancement plan are installed, sections of park may open.

- Current Status: Unknown impacts in Little Park
- Will share coordination information closer to Phase 3

The following considerations will be examined closer to Phase 3 to understand impacts to Trees, Safety & Access concerns in Little Park

1. Little Park's tree root investigations to help confirm directional drilling
 - Tree root investigations on hold due to weather
 - Directional Drilling preferred over open cut (~10 metre wide swath over Little Park Driveway)
2. Coordination of watermain & park features installation
 - a) Pathways - hoarding to replace main driveway and east-west paths (Woodlawn-Summerhill Gardens) may effectively block access
 - b) Soil Aeration & Tree Pruning - will be done concurrently and close entire park, but duration will likely not be all Phase 3; pruning to be completed prior to Bird Migratory season

If opportunities open up in Phase 2A/B for some of these work activities, we will shift them from Phase 3 to help reduce impacts.

Trees: Park Plan & Reservoir Rehabilitation

- ▶ All trees on top of reservoir roof and near the top of the slope are removed
- ▶ Each Phase of work involves a tree review process
 1. All trees in that phase are counted
 2. Tree root exploration
 3. Assess health of tree
 4. Review: Contractor's work activities and Park Plan
 - ▶ If rehab activities and park design can shift away from a healthy tree? (ie. relocate contractor's activities; slightly narrow or shift perimeter pathway)
 - ▶ **If no/minor impact = Tree is Preserved**
 - ▶ **If impact will effectively kill the tree = Tree is removed**
 5. Replanting summary: additional trees in Park Enhancement Plan
 - Additional trees at other sites, such as St Clair Reservoir
 - Follows City Park's policy

Landscape Enhancements

The City of Toronto has committed to fund enhancements to the park.

We're continuing to work with the Rosehill Vision Committee to develop a final design to be presented to the public at a later date.

The final design plan will include the following park amenities:

- A new public washroom located in the north-east section of the park
- Re-design of the Park Entrance on Rosehill Avenue
- Widening the stairs at the Jackes Ave park entrance and near the Valve House
- A new water feature at the relocated historical Molecule
- More benches and picnic tables
- Improved lighting (pedestrian lights)
- Pavers and pathway materials
- Added tree and shrub plantings surrounding the park to create a Greensward



(Reference: March 2018 Public Meeting Display Board)



Re-designed park entrance



Water Molecule and plaque to be moved to a new location



New public washroom

Building a Better Toronto Together

Public Consultation

