

This document contains:

- The Event Covid-19 risk assessment and risk mitigation plan in accordance with the [FEI Policy for Enhanced Competition Safety during the Covid-19 Pandemic](#)
- The Event Approved Schedule

Given the current covid-19 situation, please note that the FEI's approval of a Schedule should not be taken as an absolute guarantee that the Event will definitely go ahead. The decision whether the Event can take place must be made by the OC and NF in close consultation with the applicable domestic government and public health authorities. It is the responsibility of each Participant to check the status of the Event prior to planning his/her travel to the Event.

Risk assessment for COVID-19: Addendum for sporting events.

Additional risk of COVID-19 to the sporting event	Yes (1)/No (0)	Score
Will the event be held in a country that has documented active local transmission of COVID-19 (community spread)?	1	1
Will the event be held in a single venue or multiple venues/cities/countries? <i>(single venue = 0; multiple venues = 1)</i>	0	0
Will the event include international participants (athletes and spectators) from countries that have documented active local transmission of COVID-19 (community spread)? <i>(NB: if the Events does not involve spectators, please clarify this in the comments to the questions in relation to spectators in the "Mitigation Checklist" sheet)</i>	1	1
Will the event include a significant number of participants (athletes or spectators) at higher risk of severe COVID-19 disease (e.g., people over 65 years of age or people with underlying health conditions)?	0	0
Will the event include sports that are considered at higher risk of spread for COVID-19 (eg, contact sports)?	0	0
Will the event be held indoors? <i>(Yes = 1; No = 0)</i>	0	0
Total COVID-19 risk score		2

Mitigation Checklist.

Topic	Key consideration	Score Yes/Completed (2), Maybe/In progress (1), No/Not considered (0)	Weighting	Total score	Comments
Understanding of the overview of the current COVID-19 situation by the event organizers	Have the relevant OC and responsible staff been informed about the latest available guidance on the COVID-19 outbreak (official web resources available from WHO, CDC, ECDC, UN, local public health authorities)? And are the OC and staff concerned committed to following the available guidance?	2	1	2	Equestrian Canada (NF) has collaborated with both WHO and Canadian sport system partners with regard to COVID-19. Individual OCs have been in touch with local health authorities (hospitals, public health etc.) This OC managed a National competition in late 2020 under Covid-19 guidelines using two documents published by Equestrian Canada (NF): <i>Policy for Enhanced Competition Safety during Covid-19 pandemic; Guidelines for Competition Operations during Covid-19</i> as well as the venue's protocols.
	Is the OC aware of global and local daily situation reports as provided by WHO or local public health authorities?	2	1	2	Yes and both the NF and PSO (Provincial) continue to keep its stakeholders up to date.
	Do the OC and responsible staff understand the risks and transmission routes of COVID-19, the steps that Event attendees can take to limit spread, the recognized best practices (including respiratory etiquette, hand hygiene, physical distancing, etc.), and the travel restrictions adopted by different	2	1	2	

**FEI APPROVED SCHEDULE
ROCKWOOD (CAN) 16-18 July 2021**

	countries that may affect the Event?				
Event emergency preparedness and response plans	Has a contingency medical response plan for COVID-19 been developed for the Event?	2	3	6	in conjunction with <i>Equestrian Canada Emergency Planning and action plans: A guide for Competition Organizers</i>
	Does the contingency medical response plan include information about how attendees should interact with the host country healthcare system (e.g. hotline/helpline telephone number, medical teams and first-aid points for the Event, local health care system)?	2	3	6	Covid-19 Protocols and waivers are posted on the website. On arrival at the venues arrive on site the Medic will be the point person for Q & A for individual questions from athletes and official. https://covid-19.ontario.ca/index.html
	Is there an Emergency COVID-19 Outbreak Response Coordinator/Team in the OC or other structure for the Event with defined roles and responsibilities, coordinating the health preparedness and response planning for the outbreak?	2	2	4	The emergency COVID-19 Outbreak Response Team has been identified and the plan and distinct roles and responsibilities is being developed. The team is comprised of Co-Event Directors, a Representative from the Organization and the Medic - all of whom have had some emergency preparedness and crowd experience. (draft in appendix)
	Has the host country or OC requested support from WHO and/or local public health authorities?	2	3	6	Equestrian Canada relies on advice and recommendations from WHO and the venue is in contact with Local Public Health Wellington county?? https://www.wdgpulichealth.ca/
	Has the OC acquired the following supplies to help reduce the risk of transmission of COVID-19?				
Personal protective equipment (e.g. masks,	2	3	6	The OC has supplies of masks and	

FEI APPROVED SCHEDULE ROCKWOOD (CAN) 16-18 July 2021

gloves, gowns) for onsite medical personnel				gloves for for all staff members. There will be no spectators and participants will be bringing their own supplies
Hand sanitizer and alcohol rubs/gels, tissues, frequently replaced soap canisters and closed bins for safe disposal of hygienic materials (e.g. tissues, towels, sanitary products) in washrooms and changing rooms	2	3	6	Hand sanitizer stations throughout the venue and all washrooms are portable with hand sanitizer stations. Each barn section will have its own garbage/sanitizer station and participants are required to wipe down doors etc. after use.
Hand sanitizers and alcohol rubs for all entrances and throughout the venue	2	3	6	
If a person feels unwell/ shows symptoms of an acute respiratory infection during the Event:				
Is there a procedure for athletes or spectators to clearly identify whom to contact and how to do so if they or other Event participants feel unwell?	2	3	6	There are three (3) hospitals within 3 kilometres as well as one Covid-19 testing location (appointments required)
Is there a protocol on whom the OC should contact in the host country to report suspected cases and request testing and epidemiological investigations?	2	3	6	The required reporting from this competition is multi-faceted: The OC to Equestrian Canada; the Chief Steward to the international body FEI and EC; the Foreign Judge to FEI; Foreign Athlete if available to FEI; and on the medic's advice Public Health.
Are first-aid services or other medical services in-place and equipped to support patients with respiratory symptoms?	2	2	4	local hospitals
Are there isolation rooms or mobile isolation units available onsite?	2	2	4	A temporary isolation location will be identified by the Medic and will be under the medic's supervision until such time as the

**FEI APPROVED SCHEDULE
ROCKWOOD (CAN) 16-18 July 2021**

				individual can safely return home.
Are there any designated medical facilities that manage patients with COVID-19 infection in the host country?	2	2	4	
Are there transportation services with trained medical professionals available to transport critically ill patients with severe acute respiratory infections to a hospital or to evacuate them from the host country, if necessary?	2	2	4	Medic team and Public Health
Has a cleaning schedule been developed to ensure the venue is clean and hygienic – wiping surfaces and any equipment regularly with disinfectant is strongly recommended (before, during and after the event and between each round of competition)?	2	3	6	Regular part of Venue operations plan/routine
Are there established screening measures , including temperature checks in place for participants at the point of entry, venues, routes and on-site medical facilities (first-aid points)? (Please specify in Comments what these screening measures include)	2	3	6	All entering the venue will be confirmed that they have preregistered as essential providing all contact information and waiver, followed by health check (questions, temperature) and provided with a daily bracelet identifying them as screened. Prior to arrival all participants are encouraged to do a self assessment - example school self assessment - see appendix
Is the host country conducting COVID-19 laboratory diagnostic tests ? (If Yes, please specify in comments the type of COVID-19 diagnostic test used)	2	3	6	PCR test
Does the host country have a national public health emergency preparedness and response plan that can address severe respiratory diseases, including COVID-19?	2	2	4	
Is there a preliminary agreement by the host country to provide care for any	0	3	0	

**FEI APPROVED SCHEDULE
ROCKWOOD (CAN) 16-18 July 2021**

	COVID-19 cases connected with the Event?				
	If the Event is for a duration of 14 days or longer, does the medical response plan for the event include resources and protocols for managing all public health interventions that would be necessary and supporting the national public health authorities if participants are infected and become unwell at the Event? (If the event is for less than 14 days, please score 0)	0	3	0	
	If the Event is for less than 14 days, does the medical response plan include protocols for OCs to notify all participants of possible exposure to COVID-19 if the OCs are made aware of any suspected or confirmed cases that attended the Event? (If the event is for 14 days or longer, please score 0)	2	3	6	All participants, staff, oc and officials will have provided contact for tracing and tracking
Stakeholder and partner coordination	Is there an established mechanism for collaboration and coordination between the health and security sectors , which is considered as crucial?	2	2	4	The competition is sanctioned/licensed by Equestrian Canada and the FEI and it is required to report to both. In the community Public Health for the County is the health connection.
	Are there agreed, clear and easily understood processes in place for reporting to external multi-sectoral stakeholders (including surveillance authorities, WHO, CDC, ECDC, etc.) and disseminating risk communication messages (Media)?	2	2	4	report to local public health - Wellington Dufferin County Health
Command and control	Is there a decision-making authority/body and an agreed procedure to modify, restrict, postpone or cancel the Event related to the evolving COVID-19 outbreak?	2	3	6	Any recommendations or orders to modify, or cancel provided by the NF, Equestrian Canada, or the relevant Public Health agencies will be adhered to by the OC.

FEI APPROVED SCHEDULE ROCKWOOD (CAN) 16-18 July 2021

	Are there arrangements to activate a strategic health operation centre if there are suspected COVID-19 cases in connection with the Event?	2	2	4	All information will be shared with the public health agencies if required
	Have the OC and staff undergone training and exercises on personal safety procedures and emergency mitigation measures (including those specifically listed in this checklist)?	2	3	6	All will be reminded to review all COVID-19 protocols posted on website prior to arrival. In addition there is consideration for a "TEAM" zoom training session to review procedures and protocols planning for management and officials.
Risk communication	Is there a risk communication strategy for the Event in regard to COVID-19?	2	3	6	
	Is there a designated person(s) to lead media activities and tasked with managing all external communications with national and international government officials, the general public, and the media? (If yes, please identify the spokesperson in comments)	2	2	4	Designated Press officer (Kelseigh Jane) along with Event President (Andrew Woodley).
	Has there been monitoring of national and international media and social media established for rumours to be able to counter them early? (Please explain in the comments what protocols are in place for counter messaging)	2	2	4	Media will be monitored including social media and appropriate action taken.
	Has coordination been set up with major official media channels and social media sites such as Twitter, Facebook and Instagram so that messaging can be coordinated with, and assisted by, the platforms to provide targeted messaging from OCs (including messaging to counter fake news and rumours, and proactive messaging about the status of the sporting event, including	2	2	4	Coordinated by the Press Officer with contact list of media related to the event. (OC website, Instagram and facebook, Social Media, NF, PSO, Digital Equestrian news as needed)

**FEI APPROVED SCHEDULE
ROCKWOOD (CAN) 16-18 July 2021**

	changes)?				
Public health awareness of COVID-19 before and during the event	Has public health advice on clinical features of COVID-19, preventive measures, especially respiratory etiquette, hand hygiene practices, and physical distancing, been shared with all staff involved in the Event, athletes, the public, and personnel of all relevant stakeholders?	2	3	6	Signage throughout the venue, reminders by announcers, monitored throughout the grounds. Canada (and Ontario) has had a very robust programme of making clear what preventative measures are needed to control this virus. - see samples in appendix
	Has information on the at-risk populations been provided to all athletes, the public and others so they may make an informed decision on their attendance based on their personal risks?	2	3	6	
	Has public advice included information on the meaning of the following measures: quarantine, self-isolation and self-monitoring?	2	2	4	A self assessment tool available on website will assist. Quarantine and self isolation has been well explained and Public Health does follow up.
Surge capacity	Are there any surge arrangements in place in the event of a public health emergency during the Event - (i.e. suspected and confirmed cases of COVID-19?)				
	Do these surge arrangements include funding for mitigation measures?	0	3	0	
	Do these surge arrangements include stockpiles of equipment (e.g. personal protective equipment, etc.)	0	3	0	
	Do these surge arrangements include training of extra staff?	0	2	0	
	Do these surge arrangements include volunteers?	0	2	0	
Specific	Will there be daily health checks of	2	2	4	on enter - Questionnaire and

FEI APPROVED SCHEDULE ROCKWOOD (CAN) 16-18 July 2021

mitigation measures	athletes/competitors?				Temperature
Will the athletes be separated from other groups , such as officials, support staff and spectators, to limit transmission?	2	2	4	Dressage is an individual sport with only one (1) participant in a 20 x 60 metre arena at a time. Three (3) Judges are spaced around the arena in booths at least 3 metres from the arena. Support staff during warm up/preparation time must remain outside the working space and all coaching/assistance is done electronically with headphones.	
Are there measures in place to limit the sharing of equipment, water bottles, towels , etc.?	2	3	6	Each has their own water bottle, no sharing and there are no towels etc. used.	
Will athletes be given closed containers to allow for the safe disposal or storing of all hygienic materials (e.g. tissues, towels, etc.)?	2	3	6	Horses and therefore athletes and their supporting team will be stabled (located) in their own section of the barns with washroom, garbage and secured area for their exclusive use. Stables are spaced out by approximately ten (10) meters.	
Will the Event have designated seating for all spectators?	0	3	0	no spectators allowed outside of required personnel	
Does the designated seating provided allow for physical distancing between spectators (minimum of 1 metre)?	0	2	0	no spectators allowed outside of required personnel	
Have pre-travel health checks been performed on all athletes to ensure underlying co-morbidities, medications, allergies, etc. are documented?	1	2	2	****participants advised to do a self screening tool - eg. Ontario Covid-19 school screening prior to departing home ***	

**FEI APPROVED SCHEDULE
ROCKWOOD (CAN) 16-18 July 2021**

Sum of mitigation measures	182
Total mitigation score (%)	83

182

FEI APPROVED SCHEDULE ROCKWOOD (CAN) 16-18 July 2021



The decision matrix takes the risk score and the mitigation score to provide a colour determination. This colour determination identifies the total risk of transmission and further spread of COVID-19 in relation to the mass gathering. The "Colour Determination" key below the decision matrix describes the total risk for each colour.

Total COVID-19 risk score (from "Risk Assessment" Tab)	2
Total mitigation score (from "Mitigation Checklist" Tab)	83

Risk Vs. Mitigation Matrix

Total Risk Assessment Score	Very Prepared to Mitigate COVID-19 Impacts (76-100)	Somewhat Prepared to Mitigate COVID-19 Impacts (51-75)	Somewhat Unprepared to Mitigate COVID-19 Impacts (26-50)	Very Unprepared to Mitigate COVID-19 Impacts (0-25)
0 - Negligible	Very low	Very low	Very low	Very low
1 - Very Low Risk	Very low	Very low	Low	Low
2 - Low Risk	Low	Low	Low	Moderate
3 - Moderate Risk (low-moderate)	Low	Moderate	Moderate	Moderate
4 - Moderate Risk (high-moderate)	Moderate	Moderate	High	Very High
5 - High Risk	High	High	Very High	Very High
6 - Very High Risk	Very High	Very High	Very High	Very High

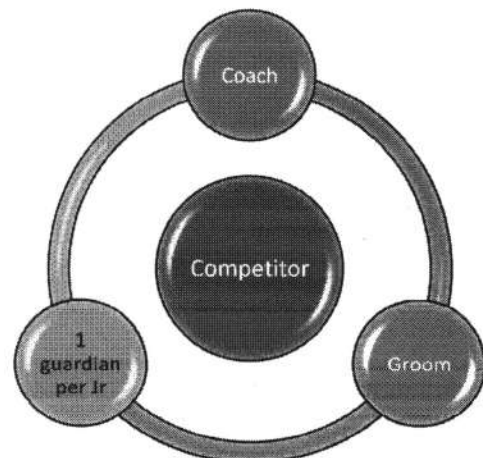


Covid-19 Competition Protocol Phase 3 Ontario Re-Opening

Rules will be updated as provincial regulations change

- 1) Angelstone Farms and Caledon Dressage have implemented COVID measures to slow the spread of COVID-19 in the workplace. Under current rule 82/20 the care of horses at a boarding stable or place that houses horses is an essential business. We will be allowing only essential personnel on the property. The list of essential personnel permitted on the Angelstone property is listed below.
- 2) Daily exercise is an essential service and will be available in the Astalos and Lunging ring. Social distancing measures will be strictly enforced at all times.
- 3) Training and Competition at a facility which is a member of a National Organization funded by Sport Canada is considered an Essential Workplace. These competitions will only be available to horses who are stabled at Angelstone Farms. Competition is only open to athletes who have a valid Equestrian Canada membership. Competitions will be hosted by Caledon Dressage. These competitions will take place in designated competition areas, and will take place without spectators. Competition areas will be open to competitors and trainers only, and anyone with access to the competition area must have a valid Equestrian Canada Membership.
- 4) Every stable must submit their list of essential personnel by email to caledondressageshowoffice@gmail.com 24 hours prior to arrival on the Angelstone property. Accreditation will be available upon arrival to the property. No one will have access to the stabling or competition areas without proper accreditation.
- 5) Appendix 1 (Essential Personnel checklist) will outline the responsibility every essential personnel has prior to arrival on the Angelstone Farms property. We expect every person to take this seriously, and act in a safe and professional way.

WHO
IS AN ESSENTIAL
PERSONNEL?



Covid-19 Competition Protocol Phase 3 Ontario Re-Opening



Checkpoint for entry

There will be a checkpoint when entering the Angelstone property. The checkpoint will be to ensure everyone is an essential personnel and is authorized to be on the grounds. People not on the list will not be allowed to enter the grounds under any circumstances. Temperature checks and verbal health checks will be conducted prior to access to the grounds being granted. Accreditation will be available here for people arriving for the first time, along with a waiver that must be signed by everyone.

Stabling area management

All horses must be stabled on the Angelstone property by 9pm the day before they compete. The stables will be closed to all vehicles at all times during competition hours. Therefore, if arriving during competition hours, horses must be unloaded in the parking area and led into the stables. There will be a mandatory checkin at the gate for new arrivals to ensure they are not competing day of arrival. Caledon Dressage will be enforcing social distancing protocols. Stables will be spread out throughout the property, with approximately 65% occupancy. The secured area of each aisle will be accessible to the essential personnel of that aisle only. A person will not be allowed to be an essential person in two aisles. This will be strictly enforced. Stables will be closed nightly from 10pm until 5 am unless previous arrangements have been made with the virtual show office.

It is your responsibility to gut all of your stalls prior to departure. A \$25/stall fee will be charged for stalls not gutted.

Shavings deliveries must be pre-ordered and will be done prior to arrival. All deliveries after your arrival will be delivered to the entrance of your secured area. The Angelstone and Caledon Dressage staff (excluding stewards) cannot enter your secured areas unless there is an emergency.

Washrooms

Every aisle will have its own washroom and hand sanitization station within their secured area. It will be the responsibility of each individual to clean and disinfect their washroom prior to use, as Angelstone and Caledon Dressage staff will not have access to your aisle.

Toilet company will clean washrooms twice weekly.

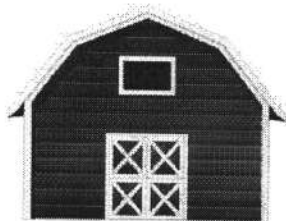
Every horse will have a \$25 surcharge for washrooms and COVID safety costs.

Garbage

Every aisle will have its own garbage can. Garbage bags will be provided prior to arrival, and garbage must be dumped into two central dumpsters on the property.

Help fight the spread by reducing your footprint

We will request for every stable to make their best efforts to minimize their footprint, while maintaining the health and safety of their horses.



Covid-19 Competition Protocol

Phase 3 Ontario Re-Opening



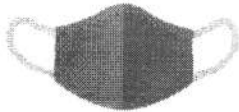
Angelstone Office and Caledon Dressage Show Office

All entries for any competitions offered during your rental period will be run through Nominate (<https://nominate.com.au/>) and our virtual office (caledondressageshowoffice@gmail.com). Any questions or concerns should be relayed to our virtual office.



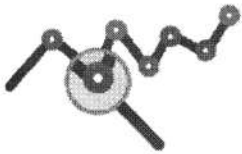
Arrivals on property

Arrivals may be done by appointment only. Vehicles are prohibited to enter the stables unless they have a set appointment. We will allow a maximum of five arrivals per hour. Stables will be asked to unload and vacate stables within their hour reservation period. Horses may not arrive to the property on the day they compete. Horses may leave at anytime. Vehicles will not be permitted in the stables without an appointment. Appointments and any contact can be made by emailing caledondressageshowoffice@gmail.com.



Masks and other safety

It is mandatory to wear a mask while not mounted on a horse in common areas. All essential personnel must bring their own mask. We will supply masks at gate for purchase for those without a mask.



Traceability

Managing the stable footprint at the farm is important. Your list of essential personnel will be used at the checkpoint when entering the property. People not on the essential list will not gain access to the property. Please ensure your list of essential personnel is sent to the office (caledondressageshowoffice@gmail.com) prior to arrival on the property, and ensure all updates are done 24 hours in advance. Essential personnel will be required to provide a completed Covid waiver daily and temperatures will be checked before entrance to Angelstone.



Schooling

Schooling will be permitted on Thursdays in the warm-up and show rings. There will be a limit of 10 horses allowed in each warmup ring and 5 in each show ring.

On competition days, a limit of 10 horses will be allowed in each warmup ring.

These limits will be monitored by in-gate personnel. We ask that you are considerate and limit your warmup times to 30 minutes before your ride time.



Ribbons/Awards

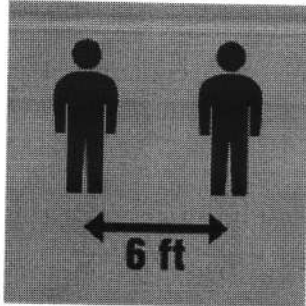
All scores and placings will be posted to the Compete Easy app and website (www.competeeasy.com/scoreboard/results). We will have a self service ribbon hut in the vendor area where you can pick up your ribbons, one person at a time.



Camp Sites

Can be booked through the Angelstone website (www.angelstone.ca) under the accommodations tab. Camping spaces have full service power and water.

Covid-19 Competition Protocol Phase 3 Ontario Re-Opening



Social Distancing

It is your responsibility to remain 6ft apart from all people at all times while on site.

**Those not abiding by this requirement
will be asked to leave the grounds immediately.**



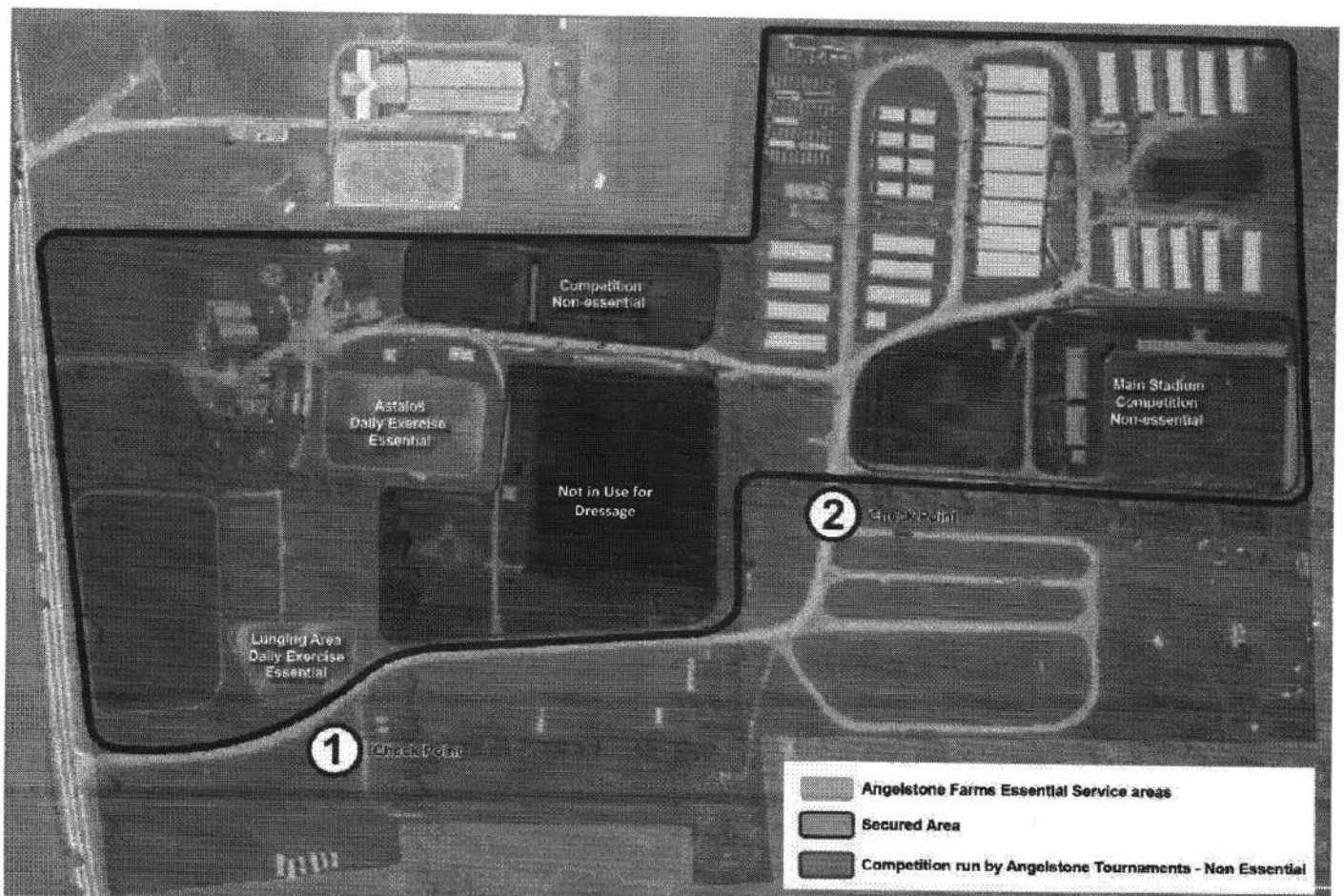
Vendors

Vendors selling only horse related goods will be permitted on site. Social distancing will be enforced in vendor area.



Food and Beverage

Food and beverage will be available for purchase. There will be a maximum of 50 people permitted in this area at one time.





Appendix 1: Essential Personnel Checklist

Use this checklist to help prepare for training or competition

Before you Leave Home

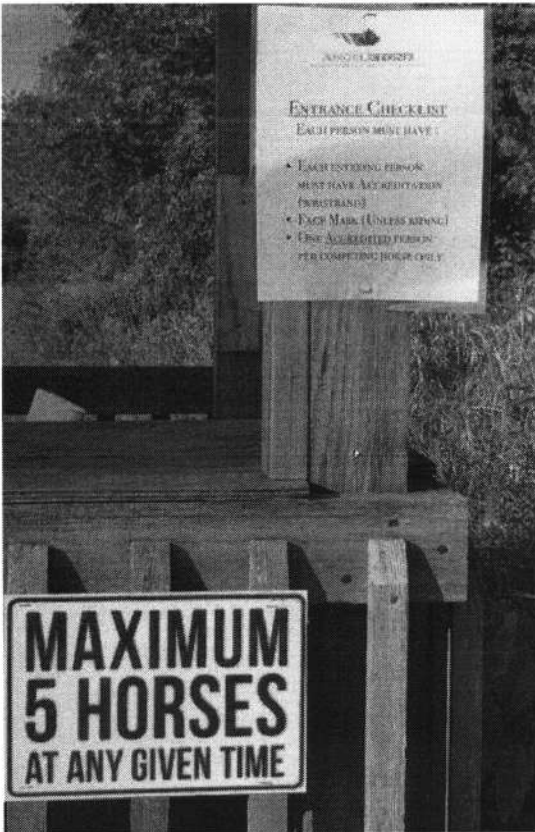
- Ensure you have emailed the list of essential personnel to caledondressageshowoffice@gmail.com
- Complete the Screening Checklist
- Thoroughly wash your hands with soap and warm water for a minimum of 20 seconds.
- Thoroughly wash water bottles with soap and warm water
- Bring thoroughly washed clothing and sanitize equipment (tack, buckets, etc...)
- Use the washroom at home/follow personal health safety requirements if using onsite washrooms
- Bring your own mask and personal hand sanitizer
- Consider activating Contact Tracing App on phone if available in your area
- Review and understand the Covid-19 protocol provided by the venue/organizing committee

Arrival

- Meet at designated location
- Respect physical distancing guidelines
- Register your attendance for contact tracing and provide confirmation of Daily Health Monitoring
- Wash hands at provided handwashing stations
- DO NOT share water bottles/drinks
- Follow traffic flow signs at your location
- If accessing water or materials onsite, sanitize hands and wear PE before touching and then sanitize following contact, this includes water taps, barn doors, gates, handles, etc...)
- Adhere to posted Covid-19 protocol/requirements of the venue and abide by the information provided

After activity is complete

- No loitering
- Ensure all garbage is discarded in provided receptacles or remove garbage with you and discard at home
- Strip stalls of all shavings and manure
- Exit through established exits
- Wash at provided handwashing stations
- Follow traffic flow signs out of your location
- Thoroughly wash clothing and sanitize equipment (tack, buckets etc...)
- Adhere to posted Covid-19 protocol/requirements of the venue and abide by the information provided



Samples of Signage for Caledon Dressage

Screening Questions Prior to Leaving for the Horse Show

- 1. In the last 14 days, have you or anyone they live with travelled outside of Canada?** *If exempt from quarantine requirements (for example, an essential worker who crosses the Canada-US border regularly for work), select "No."* Yes No
- 2. Has a doctor, health care provider, or public health unit told you that you should currently be isolating (staying at home)?** *This can be because of an outbreak or contact tracing.* Yes No
- 3. In the last 14 days, you been identified as a "close contact" of someone who currently has COVID-19?** Yes No
- 4. In the last 14 days, have you received a COVID Alert exposure notification on their cell phone?** *If you already went for a test and got a negative result, select "No."* Yes No
- 5. Are you currently experiencing any of these symptoms?** *Choose any/all that are new, worsening, and not related to other known causes or conditions they already have.*
 - Fever and/or chills** Temperature of 37.8 degrees Celsius/100 degrees Fahrenheit or higher Yes No
 - Cough or barking cough (croup)** Continuous, more than usual, making a whistling noise when breathing (not related to asthma, post-infectious reactive airways, or other known causes or conditions they already have) Yes No
 - Shortness of breath** Out of breath, unable to breathe deeply (not related to asthma or other known causes or conditions they already have) Yes No
 - Decrease or loss of taste or smell** Not related to seasonal allergies, neurological disorders, or other known causes or conditions they already have Yes No
 - Sore throat or difficulty swallowing** Painful swallowing (not related to seasonal allergies, acid reflux, or other known causes or conditions they already have) Yes No
 - Runny or stuffy/congested nose** Not related to seasonal allergies, being outside in cold weather, or other known causes or conditions they already have Yes No
 - Headache** Unusual, long-lasting (not related to tension-type headaches, chronic migraines, or other known causes or conditions they already have) Yes No
 - Nausea, vomiting and/or diarrhea** Not related to irritable bowel syndrome, anxiety, menstrual cramps, or other known causes or conditions they already have Yes No
 - Extreme tiredness or muscle aches** Unusual, fatigue, lack of energy, (not related to depression, insomnia, thyroid dysfunction, sudden injury, or other known causes or conditions they already have) Yes No
- 6. Is someone that you live with currently experiencing any new COVID-19 symptoms and/or waiting for test results after experiencing symptoms?** Yes No

If you answered "YES" to question 4 or 6 do not go to the horse show

Emergency COVID-19 Response Plan

The Team:

- (1) Andrew Woodley, President and Co-Event Director
- (2) Anne Welch, Co-Event Director
- (3) Janet Konyer, Representative from the Organization
- (4) Medic

Responsibilities

- (1) Andrew Woodley – Team Leader

All foreign officials/athletes

Kelseigh
Announcer & Press

Venue Management

Medic

- (2) Anne Welch

Chief Steward
(team of 7)

Veterinarian

The Barns & Assist with Traffic

- (3) Janet Konyer

Gate Control, Transportation & Truck Grounds

March 24, 2021

**FEI APPROVED SCHEDULE
ROCKWOOD (CAN) 16-18 July 2021**



KEY FOR COLOUR DETERMINATION OF OVERALL RISK	
VERY LOW	Overall risk of transmission and further spread of COVID-19 in relation to the Event is considered <u>very low</u> .
LOW	Overall risk of transmission and further spread of COVID-19 in relation to the Event is considered <u>low</u> . Recommend checking whether mitigation measures can be strengthened.
MODERATE	Overall risk of transmission and further spread of COVID-19 in relation to the Event is considered <u>moderate</u> . Recommend <u>significant</u> efforts to improve mitigation measures or reduce risk of transmission (decrease risk assessment score).
HIGH	Overall risk of transmission and further spread of COVID-19 in relation to the Event is considered <u>high</u> . Recommend <u>significant</u> efforts to improve <u>both</u> mitigation measures and reduce risk of transmission (decrease risk assessment score).
VERY HIGH	Overall risk of transmission and further spread of COVID-19 in relation to the Event is considered <u>very high</u> .

I. DENOMINATION OF EVENT

VENUE: Rockwood, ON

DATE: 16-18 July 2021.

NF: CAN

Indoor: Outdoor:

CDI1* CDI2* CDI3* CDI4* CDI5* CDI-W
 CDIO2* CDIO3* CDIO4* CDIO5* -NC
 CDIJ CDIY CDIP CDIU25 CDICH
 CDIOJ CDIOY CDIOP CDIYOU25 CDIOCh
 CDIAm CDIYH
 Championship Games

II. GENERAL CONDITIONS

- FEI Statutes, 24th edition, effective 19 November 2019.
- FEI General Regulations, 24th edition, 1st January 2020, updates effective 1st January 2021.
- FEI Veterinary Regulations, 14th edition, effective 1st January 2018, updates effective 1st January 2021.
- **FEI Dressage Rules (25th edition, effective 1st January 2014, including updates 1st January 2021) and if applicable the FEI Dressage World Cup™ Rules 2020/2021 and 2021/2022 and FEI Dressage Nations Cup™ Rules 2021.**
- Equine Anti-Doping and Controlled Medication Regulations (EADCMR), 3rd Edition, effective 1st January 2021.
- FEI Anti-Doping Rules for Human Athletes (ADRHA), based upon the 2021 WADA Code, effective 1st January 2021.
- The FEI Policy for Enhanced Competition Safety during the Covid-19 Pandemic, effective as of 1 July 2020 and until further notice.
- Given the current Covid-19 situation, please note that the FEI's approval of a Schedule should not be taken as an absolute guarantee that the Event will definitely go ahead. The decision whether the Event can take place must be made by the OC and NF in close consultation with the applicable domestic government and public health authorities. It is the responsibility of each Participant to check the status of the Event prior to planning his/her travel to the Event.
- All subsequent published revisions, the provisions of which will take precedence.

.....
Approved by the FEI, Lausanne, on 30/03/2021. Updated 07/04/2021.
Updated 15/06/2021.



Bettina De Rham
FEI Director Dressage & Para Dressage

TABLE OF CONTENTS

I.	DENOMINATION OF EVENT.....	1
II.	GENERAL CONDITIONS	14
III.	THE FEI CODE OF CONDUCT FOR THE WELFARE OF THE HORSE	17
IV.	GENERAL INFORMATION	18
	1. ORGANISER	18
	2. ORGANISING COMMITTEE	19
	3. EVENT DIRECTOR	19
V.	OFFICIALS	20
VI.	INVITATIONS.....	22
VII.	ENTRIES.....	22
	1. ENTRY DATES AND FEES:.....	22
	2. NO-SHOWS/LATE WITHDRAWALS:.....	22
	3. ADDITIONAL FEES/CHARGES BY ORGANISING COMMITTEE:	23
	4. DEGREE OF DIFFICULTY – FLOORPLAN GRAND PRIX FREESTYLE	23
VIII.	TIMETABLE.....	24
IX.	COMPETITIONS DETAIL.....	26
X.	FACILITIES OFFERED	35
	1. ATHLETES	35
	2. GROOMS	35
XI.	LOGISTICAL/ADMINISTRATIVE/TECHNICAL INFORMATION .	36
	1. DRAW	36
	2. COMPETITION ARENA(S).....	36
	3. PRACTICE ARENA(S)	36
	4. STABLES	36
	5. PAPERLESS JUDGING	36
	6. SCORING PROVIDER / TIMING PROVIDER.....	36
	7. AVERAGE SCORE / OPEN SCORING	37
	8. OTHER TECHNOLOGY/SERVICE PROVIDER(S)	37
	9. PRIZE GIVING CEREMONY	37
	10. ADVERTISING ON ATHLETES AND HORSES	37
	11. TICKETING	37
	12. BETTING	37
	13. TRANSPORT REIMBURSEMENT HORSES / PONIES	37
	14. WELCOME	37

15.	LOCAL TRANSPORTATION - ARRANGEMENTS FROM HOTEL TO SHOWGROUNDS.....	37
16.	ENTRY RIGHT TO SHOWGROUNDS/ACCREDITED PERSONS	38
17.	SUSTAINABILITY	38
XII.	VETERINARY MATTERS.....	39
1.	CUSTOMS FORMALITIES	39
2.	HEALTH REQUIREMENTS	39
3.	NATIONAL REQUIREMENTS.....	39
4.	PONIES	39
5.	INJURY SURVEILLANCE	39
6.	TRANSPORT OF HORSES	40
7.	VENUE ARRIVAL INFORMATION & FITNESS TO COMPETE	40
8.	EQUINE ANTI-DOPING AND CONTROLLED MEDICATION PROGRAMME (EADCMP). FEI Regulations, Chapter VII	42
XIII.	HUMAN ANTI-DOPING.....	42
XIV.	ADDITIONAL INFORMATION	42
1.	THE FEI POLICY FOR ENHANCED COMPETITION SAFETY DURING THE COVID-19 PANDEMIC	42
2.	INSURANCES AND NATIONAL REQUIREMENTS	43
3.	PROTESTS/APPEALS	45
4.	DISPUTES	45
5.	MODIFICATION TO SCHEDULE	45
6.	ADDITIONAL INFORMATION FROM THE ORGANISER	45
XV.	ANNEXES.....	47
1.	FEI ENTRY SYSTEM	47
2.	RESULTS	48

III. THE FEI CODE OF CONDUCT FOR THE WELFARE OF THE HORSE

The Fédération Equestre Internationale (FEI) expects all those involved in international equestrian sport to adhere to the FEI's Code of Conduct and to acknowledge and accept that at all times the welfare of the horse must be paramount and must never be subordinated to competitive or commercial influences.

1. At all stages during the preparation and training of competition horses, welfare must take precedence over all other demands. This includes good horse management, training methods, farriery and tack, and transportation.
2. Horses and athletes must be fit, competent and in good health before they are allowed to compete. This encompasses medication use, surgical procedures that threaten welfare or safety, pregnancy in mares and the misuse of aids.
3. Events must not prejudice horse welfare. This involves paying careful attention to the competition areas, ground surfaces, weather conditions, stabling, site safety and fitness of the horse for onward travel after the event.
4. Every effort must be made to ensure that horses receive proper attention after they have competed and that they are treated humanely when their competition careers are over. This covers proper veterinary care, competition injuries, euthanasia and retirement.
5. The FEI urges all involved with the sport to attain the highest levels of education in their areas of expertise.

A full copy of this Code can be obtained from the Fédération Equestre Internationale, Chemin de la Joliette 8, CH-1006 Lausanne, Switzerland. Telephone: +41 21 310 47 47. The Code is available in English. The Code is also available on the FEI's website: <http://inside.fei.org/>

IV. GENERAL INFORMATION

1. ORGANISER

Name: Caledon Dressage
Address: 571 Poth Rd, Welland, ON, L3B 5N8
Telephone: 519-807-0951
Email: caledondressage@gmail.com
Website: www.caledondressage.ca

Contact Details Show Ground:

Address: Angelstone Tournaments, 8720 Wellington County Rd 50,
Erin, ON

Telephone: 519-279-6788

GPS Coordinates: Lat 43.77 Long -80.06

Accessibility details (directions by road, nearest airport / train station):

From Guelph:

- Head southeast on Wyndham St N toward Carden St
- Continue onto ON-7
- At the roundabout, continue straight to stay on ON-7
- Turn right onto Main St S/ON-7
- Turn left onto Harris St (signs for County Road 50/Harris Street)
- Continue onto Wellington County Rd 50
- Destination will be on the left

From Orangeville:

- Head west on Broadway toward 2nd St
- Turn left onto John St
- Turn right onto Townline
- Turn right onto Caledon East Garafraxa Rd/Townline
- Continue onto Orangeville Caledon Townline
- Continue onto Caledon East Garafraxa Townline
- Orangeville Caledon Townline turns slightly left and becomes Winston Churchill Blvd
- Turn right onto Wellington 22
- Turn left onto Second Line
- Continue onto Wellington 125
- Turn right onto Wellington County Rd 50
- Destination will be on the right

2.ORGANISING COMMITTEE

Honorary President: N/A
President of the event: Andrew Woodley
Show Secretary: Andrew Woodley
Press Officer: Kelseigh Zikos

3.EVENT DIRECTOR

Name: Andrew Woodley (see contact above) & Anne Welch
Address: 33 Chapman Court, Aurora, ON L4G 0E2
Telephone: 905-717-6190
Mobile: 905-717-6190
Email: anne@dancingdog.ca

FEI APPROVED SCHEDULE ROCKWOOD (CAN) 16-18 July 2021



V. OFFICIALS

Please note that the schedule has been approved under the provision that all appointed Officials have successfully passed the on-line FEI Competency Evaluation Test.

Ref.	Panel	Function	FEI ID	Name	NF	Level	Contact Email
1	Ground Jury	Ground Jury President	10052677	Brenda Minor	CAN	4*	bminor@ipti.org
		Ground Jury Member	10184435	Joanne Bouwhuis	CAN	3*	jebequine@gmail.com
		Ground Jury Member	10049709	Elizabeth McMullen	CAN	5*	lib1@mcmdressage.com
		Foreign Judge	10053065	Sarah Geikie	USA	4*	sgeikie@charter.net
Exception to the Dressage Rules (Art 437.9.11, 437.9.14 and 437.9.16) granted by the FEI for the Ground Jury panel.							
2	Foreign Technical Delegate	Foreign Technical Delegate					
3	Chief Steward	Chief Steward	10107109	Lynne Milford	CAN	2	Lynne_milford@yahoo.com
4	Assistant Stewards	Assistant Steward	10103201	Peggy Hambly	CAN	1	Peggy.hambly@gmail.com
		Assistant Steward	./.	Kathy Tindale	CAN	NAT	mktindale@gmail.com
		Assistant Steward	./.	Sue Foell	CAN	NAT	Sue.foell@gmail.com
		Assistant Steward	./.	Marilyn Elkin	CAN	NAT	Mmarilyn001@sympatico.ca
		Assistant Steward	./.	Scott Foell	CAN	NAT	Scott.foell@gmail.com
		Assistant Steward	./.	Brett Filson	CAN	NAT	Bfilson42@hotmail.com
		Assistant Steward	./.	Lynne Poole	CAN	NAT	LynnePooleLawrie@gmail.com
5	FEI Veterinary Delegate	Veterinary Delegate	10094780	Emily Jantzi	CAN	2	Emily.jantzi@gmail.com
		Additional Veterinary Delegate					
	FEI Veterinary Commission	Veterinary Commission President					
		Foreign Veterinary Delegate					
		Veterinary Commission Member					
6	Veterinary Services Manager / Treating Veterinarian	Veterinary Services Manager	10053819	Alan Young	CAN	2	Alan-macday@gmail.com 905-877-2923
		Veterinary Services Manager	10138275	Paige Manning	CAN		519-855-9983 manningequine@sympatico.ca
		Permitted Treating Veterinarian					
7	Doctor/Medical Service	Doctor/Medical Service		Tack-Two EMS & Fire			Cell: 519-835-9025
8	Farrier	Farrier		Mountain Oak Farriers			Mountainoakfarrierservices@gmail.com 416-831-9379

**FEI APPROVED SCHEDULE
ROCKWOOD (CAN) 16-18 July 2021**



9	NF Delegate	NF Delegate (if applicable)					
---	-------------	-----------------------------	--	--	--	--	--

VI. INVITATIONS

Number of NFs invited:	open
State which NFs are invited:	open
Reserve NFs:	open
Total Number of athletes:	open
Number of home athletes:	open
Number of athletes per NF:	open
Number of horses per athlete:	see individual competitions

Athletes are invited by the Organiser through their NF.
One (1) groom per athlete.

VII. ENTRIES

- You must use the FEI Entry System for all categories of this Event:
<https://entry.fei.org>
- You will find additional documentation on:
<https://inside.fei.org/fei/your-role/it-services/it-platforms/fei-entry-system>
- All Athletes and Horses participating in any International Competition must be registered with the FEI.
- Athletes and/or Horses present at the Event without having been entered through the FEI's Online Entry System will automatically be disqualified unless compelling circumstances warrant otherwise.

1. ENTRY DATES AND FEES:

Deadlines for entries

Definite Entries:	07/07/2021
Last date for substitutions:	15/07/2021, at the latest two hours before Horse Inspection

Entries have to be in accordance with art 423 of the Dressage Rules and art 116 of the General Regulations.

Entry fee per horse:	CAD 115-135-see competition listing (VAT included)
Stabling fee per horse (if any):	283
Starting fee per horse (if any):	n/a
VAT:	13% included in fees
Total fee per horse:	CAD \$800-\$860

2. NO-SHOWS/LATE WITHDRAWALS:

NB: In the case of withdrawals after the date of definite entries or no-shows the athlete

**FEI APPROVED SCHEDULE
ROCKWOOD (CAN) 16-18 July 2021**

or the respective NF will be held liable to reimburse the Organiser for the actual financial loss incurred by the Organiser (i.e., stabling and hotel expenses) as a result of the late withdrawal or no-show.

Amount charged: Total Entry fees including stabling

3. ADDITIONAL FEES/CHARGES BY ORGANISING COMMITTEE:

All other fees must be listed hereunder with the details of the amounts to be charged and approved by the FEI. Only fees approved by the FEI and listed in the approved Schedule can be charged by the Organiser.

EADCMP Fee:

Included in compulsory entry fee Not included in compulsory entry fee

Lower Level Events (CIMs) CHF 18 per horse per event
(For definition of CIMs see Appendix E of the FEI General Regulations)
Higher Level Events CHF 25 per horse per event
(All other events not defined as CIM)

Electricity/Camping (upon request):	\$200 + 13% direct with Angelstone
Manure disposal:	N/A
Hay:	\$19/bale
Straw:	N/A
Shavings:	\$12/bag
Administration fee	\$57
Emergency & Safety	\$40
Late entry & change fee	\$79
EADCMP Drug Testing	\$51.98
Non-negotiable cheque	\$79
Results reporting fee (software required to report movement by movement results to the FEI)	\$23
Mailed entry fee (either surface or email)	\$50

All aforementioned amounts are including VAT

VAT Number of the Organiser: 80622 7153 RT0001

4. DEGREE OF DIFFICULTY – FLOORPLAN GRAND PRIX FREESTYLE

DoD will be used. DoD will not be used. Not Applicable.

Athletes are required to login using their own credentials on to <http://dressagefreestyle.fei.org> to create or assign their Grand Prix Freestyle floorplan at the latest 2 hours prior to:

- the horse inspection.
- the draw of the Grand Prix.

VIII. TIMETABLE

Competitions must not start before 08:00 and must not finish after 23:00 unless prior approval is granted by the FEI.

The current edition of Dressage Tests at the date of the show will be used and all tests must be ridden from memory.

<https://inside.fei.org/fei/your-role/organisers/dressage/tests>

	Day	Date	Time
• <u>Opening of stables</u>	Thursday	July 15, 2021	8 am
• <u>Horse Inspection</u>	Thursday	July 15, 2021	4 pm
• <u>Declaration of Starters</u>	Not later than one (1) hour after the horse inspection.		
• <u>Draw:</u>			
#501,504,507,510,513,516,519	Thursday	July 15, 2021	½ hour after declarations
#502,505,508,511,514,517,520	Friday	July 16, 2021	½ hour after last competition
#503,506,509,512,515,518,521	Saturday	July 17, 2021	½ hour after last competition

Competitions CDI1*:	Day	Date	Time	Prize Money
#501 Prix St. Georges	Friday	July 16, 2021	After 8 a.m.	\$325-\$1000
#502 Intermediate I	Saturday	July 17, 2021	After 8 a.m.	\$175-\$500
#503 Intermediate I Freestyle	Sunday	July 18, 2021	After 8 a.m.	\$175-\$500
<u>Total Prize Money</u>				\$675-\$2000
<u>Prizes in Kind</u>				

Competitions CDIAm:	Day	Date	Time	Prize Money
#504 Prix St. Georges	Friday	July 16, 2021	After 8 a.m.	\$325-\$1000
#505 Intermediate I	Saturday	July 17, 2021	After 8 a.m.	\$175-\$500
#506 Intermediate I Freestyle	Sunday	July 18, 2021	After 8 a.m.	\$175-\$500
#507 Intermediate A	Friday	July 16, 2021	After 8 a.m.	\$325-\$1000
#508 Intermediate B	Saturday	July 17, 2021	After 8 a.m.	\$175-\$500
#509 Intermediate II	Sunday	July 18, 2021	After 8 a.m.	\$175-\$500
<u>Total Prize Money</u>				\$1350-\$4000
<u>Prizes in Kind</u>				

**FEI APPROVED SCHEDULE
ROCKWOOD (CAN) 16-18 July 2021**

Competitions CDIU25:	Day	Date	Time	Prize Money
#510 Intermediate II	Friday	July 16, 2021	After 8 a.m.	\$175-\$500
#511 Grand Prix 16-25	Saturday	July 17, 2021	After 8 a.m.	\$175-\$500
#512 Grand Prix Freestyle	Sunday	July 18, 2021	After 8 a.m.	\$175-\$500
Total Prize Money				\$525-\$1500
Prizes in Kind				

Competitions CDIY:	Day	Date	Time	Prize Money
#513 Young Rider Team	Friday	July 16, 2021	After 8 a.m.	\$100-\$300
#514 Young Rider Individual	Saturday	July 17, 2021	After 8 a.m.	\$100-\$300
#515 Young Rider Freestyle	Sunday	July 18, 2021	After 8 a.m.	\$100-\$300
Total Prize Money				\$300-\$900
Prizes in Kind				

Competitions CDIJ:	Day	Date	Time	Prize Money
#516 Junior Team	Friday	July 16, 2021	After 8 a.m.	\$65-\$200
#517 Junior Individual	Saturday	July 17, 2021	After 8 a.m.	\$65-\$200
#518 Junior Freestyle	Sunday	July 18, 2021	After 8 a.m.	\$65-\$200
Total Prize Money				\$195-\$600
Prizes in Kind				

Competitions CDICH:	Day	Date	Time	Prize Money
#519 Children Preliminary A	Friday	July 16, 2021	After 8 a.m.	NIL
#520 Children Team	Friday	July 16, 2021	After 8 a.m.	\$70-\$200
#521 Children Individual	Saturday	July 17, 2021	After 8 a.m.	\$70-\$200
Total Prize Money				\$140-\$400
Prizes in Kind				

GENERAL CLASSIFICATION AT THE END OF THE COMPETITIONS:

Leading athlete award –	Prize in kind
Best foreign athlete -	n/a
Best home athlete –	n/a
Team awards –	n/a

IX. COMPETITIONS DETAIL

FIRST DAY: Friday

DATE: July 16, 2021

COMPETITION No 501

(CDI1*)

Test: FEI Prix St. Georges
 Number of horses per athlete: 2
 Open to: All athletes entered
 Draw/Art: Ordinary Draw (Art.425.2)
 Class Fee: \$135 including VAT
 Prize money: \$325-\$1000
 Breakdown: see table

Placing	Number of Starters				
	1	2	3	4	5
First	\$325	\$325	\$325	\$325	\$325
Second		\$275	\$275	\$275	\$275
Third			\$200	\$200	\$200
Fourth				\$150	\$150
Fifth					\$50

* * * * *

COMPETITION No 504

(CDIAm)

Test: FEI Prix St. Georges
 Number of horses per athlete: 2
 Open to: All athletes entered
 Draw/Art: Ordinary Draw (Art.425.2)
 Class Fee: \$135 including VAT
 Prize money: \$325-\$1000
 Breakdown: see table

Placing	Number of Starters				
	1	2	3	4	5
First	\$325	\$325	\$325	\$325	\$325
Second		\$275	\$275	\$275	\$275
Third			\$200	\$200	\$200
Fourth				\$150	\$150
Fifth					\$50

* * * * *

COMPETITION No 507

(CDIAm)

Test: Intermediate A
 Number of horses per athlete: 2
 Open to: All athletes entered
 Draw/Art: Ordinary Draw (Art.425.2)
 Class Fee: \$135 including VAT
 Prize money: \$325-\$1000
 Breakdown: see table

**FEI APPROVED SCHEDULE
ROCKWOOD (CAN) 16-18 July 2021**

	Number of Starters				
Placing	1	2	3	4	5
First	\$325	\$325	\$325	\$325	\$325
Second		\$275	\$275	\$275	\$275
Third			\$200	\$200	\$200
Fourth				\$150	\$150
Fifth					\$50

* * * * *

COMPETITION No 510

(CDIU25)

Test: Intermediate II
 Number of horses per athlete: 1
 Open to: All athletes entered
 Draw/Art: Ordinary Draw (Art.425.2)
 Class Fee: \$115 including VAT
 Prize money: \$100-\$300
 Breakdown: see table

	Number of Starters				
Placing	1	2	3	4	5
First	\$100	\$100	\$100	\$100	\$100
Second		\$75	\$75	\$75	\$75
Third			\$50	\$50	\$50
Fourth				\$50	\$50
Fifth					\$25

* * * * *

COMPETITION No 513

(CDIY)

Test: FEI Young Rider Team
 Number of horses per athlete: 2
 Open to: All athletes entered
 Draw/Art: Ordinary Draw (Art.425.2)
 Class Fee: \$115 including VAT
 Prize money: \$100-\$300
 Breakdown: see table

	Number of Starters				
Placing	1	2	3	4	5
First	\$100	\$100	\$100	\$100	\$100
Second		\$75	\$75	\$75	\$75
Third			\$50	\$50	\$50
Fourth				\$50	\$50
Fifth					\$25

* * * * *

**FEI APPROVED SCHEDULE
ROCKWOOD (CAN) 16-18 July 2021**

COMPETITION No 516

(CDIJ)

Test: FEI Junior Team
 Number of horses per athlete: 2
 Open to: All athletes entered
 Draw/Art: Ordinary Draw (Art.425.2)
 Class Fee: \$115 including VAT
 Prize money: \$65-\$200
 Breakdown: see table

Placing	Number of Starters				
	1	2	3	4	5
First	\$65	\$65	\$65	\$65	\$65
Second		\$55	\$55	\$55	\$55
Third			\$40	\$40	\$40
Fourth				\$30	\$30
Fifth					\$10

* * * * *

COMPETITION No 519

(CDICh)

Test: Children Preliminary A
 Number of horses per athlete: 2
 Open to: All athletes entered.
 Draw/Art: Ordinary Draw (Art.425.2)
 Class Fee: \$115 including VAT
 Prize money: NIL

* * * * *

**FEI APPROVED SCHEDULE
ROCKWOOD (CAN) 16-18 July 2021**

SECOND DAY: Saturday

DATE: July 17, 2021

COMPETITION No 502

(CDI1*)

Test: Intermediate I
 Number of horses per athlete: 2
 Open to: All athletes entered
 Draw/Art: Ordinary Draw (Art.425.2)
 Class Fee: \$135 including VAT
 Prize money: \$\$175-\$500
 Breakdown: see table

Placing	Number of Starters				
	1	2	3	4	5
First	\$175	\$175	\$175	\$175	\$175
Second		\$125	\$125	\$125	\$125
Third			\$100	\$100	\$100
Fourth				\$75	\$75
Fifth					\$25

* * * * *

COMPETITION No 505

(CDIAm)

Test: Intermediate I
 Number of horses per athlete: 2
 Open to: All athletes entered
 Draw/Art: Ordinary Draw (Art.425.2)
 Class Fee: \$135 including VAT
 Prize money: \$\$175-\$500
 Breakdown: see table

Placing	Number of Starters				
	1	2	3	4	5
First	\$175	\$175	\$175	\$175	\$175
Second		\$125	\$125	\$125	\$125
Third			\$100	\$100	\$100
Fourth				\$75	\$75
Fifth					\$25

* * * * *

COMPETITION No 508

(CDIAm)

Test: FEI Intermediate B
 Number of horses per athlete: 2
 Open to: All athletes entered
 Draw/Art: Ordinary Draw (Art.425.2)
 Class Fee: \$135 including VAT
 Prize money: \$175-\$500
 Breakdown: see table

**FEI APPROVED SCHEDULE
ROCKWOOD (CAN) 16-18 July 2021**

	Number of Starters				
Placing	1	2	3	4	5
First	\$175	\$175	\$175	\$175	\$175
Second		\$125	\$125	\$125	\$125
Third			\$100	\$100	\$100
Fourth				\$75	\$75
Fifth					\$25

* * * * *

COMPETITION No 511

(CDIU25)

Test: Grand Prix 16-25
 Number of horses per athlete: 1
 Open to: All athletes entered
 Draw/Art: Ordinary Draw (Art.425.2.1.a)
 Class Fee: \$115 including VAT
 Prize money: \$175-\$500
 Breakdown: see table

	Number of Starters				
Placing	1	2	3	4	5
First	\$175	\$175	\$175	\$175	\$175
Second		\$125	\$125	\$125	\$125
Third			\$100	\$100	\$100
Fourth				\$75	\$75
Fifth					\$25

* * * * *

COMPETITION No 514

(CDIY)

Test: FEI Young Rider Individual
 Number of horses per athlete: 2
 Open to: All athletes entered
 Draw/Art: Ordinary Draw (Art.425.2)
 Class Fee: \$115 including VAT
 Prize money: \$100-\$300
 Breakdown: see table

	Number of Starters				
Placing	1	2	3	4	5
First	\$100	\$100	\$100	\$100	\$100
Second		\$75	\$75	\$75	\$75
Third			\$50	\$50	\$50
Fourth				\$50	\$50
Fifth					\$25

* * * * *

**FEI APPROVED SCHEDULE
ROCKWOOD (CAN) 16-18 July 2021**

COMPETITION No 517

(CDIJ)

Test: FEI Junior Individual
 Number of horses per athlete: 2
 Open to: All athletes entered
 Draw/Art: Ordinary Draw (Art.425.2)
 Class Fee: \$115 including VAT
 Prize money: \$65-\$200
 Breakdown: see table

Placing	Number of Starters				
	1	2	3	4	5
First	\$65	\$65	\$65	\$65	\$65
Second		\$55	\$55	\$55	\$55
Third			\$40	\$40	\$40
Fourth				\$30	\$30
Fifth					\$10

* * * * *

COMPETITION No 520

(CDICh)

Test: Children Team
 Number of horses per athlete: 2
 Open to: All athletes entered
 Draw/Art: Ordinary Draw (Art.425.2)
 Class Fee: \$115 including VAT
 Prize money: \$65-\$200
 Breakdown: see table

Placing	Number of Starters				
	1	2	3	4	5
First	\$65	\$65	\$65	\$65	\$65
Second		\$55	\$55	\$55	\$55
Third			\$40	\$40	\$40
Fourth				\$30	\$30
Fifth					\$10

* * * * *

**FEI APPROVED SCHEDULE
ROCKWOOD (CAN) 16-18 July 2021**

THIRD DAY: Sunday

DATE: July 18, 2021

COMPETITION No 503

(CDI1*)

Test: FEI Intermediate I Freestyle

Number of horses per athlete: 1

Open to: and compulsory for the best 15 athletes qualified from the Intermediate I, competition #502

Draw/Art: Art. DRs 425.5

Class Fee: \$135 including VAT

Prize money: \$175-\$500

Breakdown: see table

Placing	Number of Starters				
	1	2	3	4	5
First	\$175	\$175	\$175	\$175	\$175
Second		\$125	\$125	\$125	\$125
Third			\$100	\$100	\$100
Fourth				\$75	\$75
Fifth					\$25

* * * * *

COMPETITION No 506

(CDIAm)

Test: FEI Intermediate I Freestyle

Number of horses per athlete: 1

Open to: the best 15 athletes qualified from the Intermediate I, competition #505

Draw/Art: Art. DRs 425.5

Class Fee: \$135 including VAT

Prize money: \$175-\$500

Breakdown: see table

Placing	Number of Starters				
	1	2	3	4	5
First	\$175	\$175	\$175	\$175	\$175
Second		\$125	\$125	\$125	\$125
Third			\$100	\$100	\$100
Fourth				\$75	\$75
Fifth					\$25

* * * * *

**FEI APPROVED SCHEDULE
ROCKWOOD (CAN) 16-18 July 2021**

COMPETITION No 509

(CDIAm)

Test: Intermediate II
 Number of horses per athlete: 2
 Open to: All entered
 Draw/Art: Art. DRs 425.2
 Class Fee: \$135 including VAT
 Prize money: \$175-\$500
 Breakdown: see table

Placing	Number of Starters				
	1	2	3	4	5
First	\$175	\$175	\$175	\$175	\$175
Second		\$125	\$125	\$125	\$125
Third			\$100	\$100	\$100
Fourth				\$75	\$75
Fifth					\$25

* * * * *

COMPETITION No 512

(CDIU25)

Test: Grand Prix Freestyle
 Number of horses per athlete: 1
 Open to: and compulsory for the best 15 athletes qualified from the Grand Prix 16-25, class 511
 Draw/Art: Art. DRs 425.5
 Class Fee: \$115 including VAT
 Prize money: \$100-\$500
 Breakdown: see table

Placing	Number of Starters				
	1	2	3	4	5
First	\$175	\$175	\$175	\$175	\$175
Second		\$125	\$125	\$125	\$125
Third			\$100	\$100	\$100
Fourth				\$75	\$75
Fifth					\$25

* * * * *

COMPETITION No 515

(CDIY)

Test: FEI Young Riders Freestyle
 Number of horses per athlete: 1
 Open to: and compulsory for the best 18 athletes qualified from the Young Rider Individual, competition #514
 Draw/Art: Art. DRs 425.5
 Class Fee: \$115 including VAT
 Prize money: \$100-\$300
 Breakdown: see table

**FEI APPROVED SCHEDULE
ROCKWOOD (CAN) 16-18 July 2021**

Placing	Number of Starters				
	1	2	3	4	5
First	\$100	\$100	\$100	\$100	\$100
Second		\$75	\$75	\$75	\$75
Third			\$50	\$50	\$50
Fourth				\$50	\$50
Fifth					\$25

* * * * *

COMPETITION No 518

(CDIJ)

Test: FEI Juniors Freestyle

Number of horses per athlete: 1

Open to: and compulsory for the best 15 athletes qualified from the Junior Individual, competition #517

Draw/Art: Art. DRs 425.5

Class Fee: \$115 including VAT

Prize money: \$65-\$200

Breakdown: see table

Placing	Number of Starters				
	1	2	3	4	5
First	\$65	\$65	\$65	\$65	\$65
Second		\$55	\$55	\$55	\$55
Third			\$40	\$40	\$40
Fourth				\$30	\$30
Fifth					\$10

* * * * *

COMPETITION No 521

(CDICH)

Test: Children Individual

Number of horses per athlete: 1

Open to: the best 15 athletes qualified from the Children Team, competition #520

Draw/Art: Art. DRs 425.8

Class Fee: \$115 including VAT

Prize money: \$65-\$200

Breakdown: see table

Placing	Number of Starters				
	1	2	3	4	5
First	\$65	\$65	\$65	\$65	\$65
Second		\$55	\$55	\$55	\$55
Third			\$40	\$40	\$40
Fourth				\$30	\$30
Fifth					\$10

X. FACILITIES OFFERED

1.ATHLETES

Accommodation.

Hotel: Best Western Milton

Address: 161 Chisholm Dr, Milton, ON L9T 4A6

Telephone: 905-875-3818

At the expense of: The Organiser or the Athlete

Meals.

At the expense of: The Organiser or the Athlete

2.GROOMS

Accommodation.

Requests for accommodation must be sent with entries.

At the expense of: The Organiser or the Athlete

Meals.

At the expense of: The Organiser or the Athlete

N.B. Organiser's must provide proper sanitary conditions. The showering facilities should be sufficient for both male and female grooms with hot and cold water. Shower facilities as well as restrooms should at all times be in a state of cleanliness.

XI. LOGISTICAL/ADMINISTRATIVE/TECHNICAL INFORMATION

1.DRAW

Location of the draw: LOUNGE - TBA

2.COMPETITION ARENA(S)

Total dimensions: 68Mx91M (Competition arena - dimensions: 20 x 60 m)
(Competition arena - dimensions: 20 x 60 m)

Type of Footing: All Weather Footing

3.PRACTICE ARENA(S)

Total dimensions: 45Mx85M (Competition arena - dimensions: 20 x 60 m)

Type of Footing: All Weather Footing

4.STABLES

Size of boxes: 3 m x 3 m (minimum 3m x 3m + 20 % 3m x 4m)

5.PAPERLESS JUDGING

It is compulsory to have a certified software/solution in order to offer Paperless Judging at FEI Dressage Events.

Will you use a FEI Certified Paperless Judging Software/Solution to manage judging at your Event? (The list of certified Service Providers is available here: <https://inside.fei.org/fei/your-role/it-services/it-providers/list>)

No

6.SCORING PROVIDER / TIMING PROVIDER

Will you use a FEI Certified Service Provider to manage the scoring and timing at your Event? (The list of certified Service Providers is available here: <https://inside.fei.org/fei/your-role/it-services/it-providers/list>)

No

Name of Company: NOMINATE

Contact person at Event:

Name: Lloyd Raleigh

FEI ID number: 10009034

Contact email: lloyd@nominate.com.au

The FEI may require to be provided with real time results data feed of your Events according to FEI requirements; in this case you and your provider will be informed

accordingly.

7.AVERAGE SCORE / OPEN SCORING

Average Score and Open Scoring: Yes No

8.OTHER TECHNOLOGY/SERVICE PROVIDER(S)

Will you use other technology/service provider(s) at your Event?

No

9.PRIZE GIVING CEREMONY

The number of athletes required to present themselves for the prize giving ceremony of each competition is 3 and rosettes to Six (6).

All prize giving ceremonies must strictly follow the **Covid-19 guidelines for Prize giving protocols and media activities.**

10. ADVERTISING ON ATHLETES AND HORSES

The athletes are authorised to carry the logo of their personal sponsor. The Chief Steward will check that the advertising and publicity on athletes and horses complies with Article 135 of the General Regulations.

11. TICKETING

Are you selling ticket for spectator to attend your event: Yes No

12. BETTING

Betting will be authorised by the Organiser. Yes No

13. TRANSPORT REIMBURSEMENT HORSES / PONIES

Transport expenses to be paid by:

The Organiser at _____ per km or the Athlete

14. WELCOME

The time and date of arrival of athletes, horses and their means of transport must be given to the Organiser in order to facilitate them on arrival.

15. LOCAL TRANSPORTATION - ARRANGEMENTS FROM HOTEL TO SHOWGROUNDS

Walking distance

Organiser Shuttle Service

Public Transport to be paid by the Organiser or the Athlete

If paid by Athlete approximate cost per round trip:

Taxi: to be paid by the Organiser or the Athlete .

If paid by Athlete approximate cost per round trip:

Other:

16. ENTRY RIGHT TO SHOWGROUNDS/ACCREDITED PERSONS

Entry right to the stable area acc. to FEI Veterinary Regulations Art. 1008-1009.

NUMBER ACCREDITED PERSONS:

Athlete: 1

Partner: 1

Groom: 1

Horse Owner: 2 two (2) accreditations per horse acc. to FEI Passport

Other:

17. SUSTAINABILITY

Please consider the environment when organising an FEI Event. Please find useful information on FEI Sustainability here:

<http://inside.fei.org/fei/your-role/organisers/handbook>

XII. VETERINARY MATTERS

1. CUSTOMS FORMALITIES

Name: Sea Air International Forwarders I:
Address: 1720 Meyerside Drive, Mississauga, ON, L5T 1A3
Telephone: (905) 677-7701 1-800-208-9409
Email: sales@seaair.ca

Contact Jeff or Carolyn at Sea Air International

2. HEALTH REQUIREMENTS

GENERAL

In accordance with the FEI Code of Conduct for the Welfare of the Horse it is imperative that all Horses at FEI Events are physically fit and free from infectious disease before being allowed to compete.

ENTRY OF HORSES

Required health tests and vaccinations: negative Coggins or other EIA test within 12 months of competition date, Influenza Vaccinations&booster See Section 7.2 below for time schedule requirements.

Quarantine period: According to Canadian law, if necessary

Specimen Import Licence applied: n/a

ARTICLE A519 VACCINATIONS - Equestrian Canada General Regulations

All horses attending Equestrian Canada sanctioned competitions must have been administered Equine Influenza and Equine Herpes Virus (1&4) vaccinations within 6 months (+21 days grace period) before arrival at the event. No horse shall receive vaccination within 7 days prior to arrival at the event.

Note: Equine herpes is in fact Equine Viral Rhinopneumonitis and is included in most influenza vaccines ("flu-rhino")

3. NATIONAL REQUIREMENTS

N/A

4. PONIES

FEI Veterinary Regulations, Chapter IX and Annex IX: For all Pony Events, Ponies must be available for Pony Measurement if requested by the FEI.

5. INJURY SURVEILLANCE

FEI Veterinary Regulations, Chapter VIII: Horses participating in FEI Events are

subject to injury surveillance protocols; and in the event of fatality, a post mortem examination.

6. TRANSPORT OF HORSES

Horses must be fit to travel and be transported in suitable vehicles. Any government requirements for disease testing and control must be requested well in advance, to ensure that the horse is in compliance by the time of arrival at the border of the country where the Event is taking place. Athletes, or their representatives, have the responsibility to comply with national legislation in both their country of origin and the host nation of the Event. Where necessary athletes must contact local government authorities or veterinary advisors for information regarding animal health requirements and transport legislation. Within the European Union (EU), this includes EU Council Regulation (EC) No 1/2005 concerning the protection of animals during transport within the Member States of the EU.

7. VENUE ARRIVAL INFORMATION & FITNESS TO COMPETE

7.1 PASSPORTS. FEI General Regulations Article 137

For all issues relating to FEI Horse Passports/FEI Recognition Cards please contact your National Federation.

All Horses competing at FEI Events must be registered with the FEI.

FEI Passports or FEI Recognition Cards (for those Horses with a national passport approved by the FEI) are compulsory for FEI Events.

NB: Horses entered in CIMs in their country of residence are not required to have an FEI Passport or FEI Recognition Card but must be properly registered with the FEI and identifiable (GRs 137.2).

Athletes who do not present a Horse's Passport and/or Recognition Card, or one that is not correctly validated or fail to meet other passport requirements will be **subject to Sanctions in accordance with Annex VI of the FEI Veterinary Regulations** and may not be allowed to compete.

NB for Horses permanently resident in a Member State of the European Union: all Horses must have a national EU passport in compliance with EU Regulations to which a FEI Recognition card is applied. The exception to this being Horses in possession of an FEI passport which has been continually revalidated without interruption.

7.2 VACCINATIONS - EQUINE INFLUENZA. FEI Veterinary Regulations Article 1003

Horses competing at FEI Events must comply with the requirements for Equine Influenza vaccination in accordance with the Veterinary Regulations and as summarised below.

VACCINATION	PROTOCOL	ELIGIBILITY TO ENTER VENUE
Primary Course	1 st Vaccination: day 0 2 nd Vaccination: day 21-92	May compete 7 days after the 2 nd Vaccination
First Booster	Within 7 months of the 2 nd vaccination of the Primary Course	May compete for 6 months +21 days after the 2 nd vaccination of the Primary Course Must not compete in the 7 days after receiving a vaccination
Boosters	MINIMUM: within one year of previous booster vaccination IF COMPETING: must be in the 6 months +21 days of the booster previous vaccination	Must have been vaccinated within 6 months +21 days before arriving at the Event Must not compete in the 7 days after receiving a vaccination

All FEI registered Horses intending to compete at FEI Events (including CIMs) must be vaccinated against Equine Influenza in accordance with these VRs. The exception being if the applicable domestic legislation prevents the use of Equine Influenza vaccines within the relevant territory

7.3 EXAMINATION ON ARRIVAL. FEI Veterinary Regulations Article 1031

On arrival at an Event venue, all Horses must undergo an examination by a veterinarian to confirm their identification from their passport and micro-chip ID (where present), their vaccination status and general health. To protect all horses attending events, any Horse with a questionable health status concerning vaccination, disease or other concerns, must be stabled within the isolation facilities provided by the Organising Committee pending a decision on entering the venue.

7.4 HORSE INSPECTIONS. FEI Veterinary Regulations Articles 1034-1042

All Horses will be assessed for their fitness to compete during the Horse Inspection. Any Horse demonstrating questionable fitness may be referred to the Holding Box for further veterinary examination. Horses not deemed fit to compete by the Inspection Panel will not be permitted to compete.

7.5 LIMB SENSITIVITY EXAMINATION. FEI Veterinary Regulations Articles 1048-1053

All Horses are subject to examination under the protocol for abnormal limb sensitivity throughout the period of an Event. For Jumping that includes, but is not limited to, between rounds and before the Jump Off. For Endurance that includes, but is not limited to, pre-ride, during the ride and after the ride. Horses may be examined once or on multiple occasions during the Period of an Event. Horses may be selected for examination under the protocol randomly or they may be targeted. All Horses selected to be tested must submit promptly to the examination or are subject to immediate disqualification. There is no obligation to examine any specific number of Horses at an Event.

**8. EQUINE ANTI-DOPING AND CONTROLLED MEDICATION PROGRAMME
(EADCMP). FEI Regulations, Chapter VII**

8.1 SAMPLING. FEI Veterinary Regulations Chapter VII

All horses competing at FEI Events may be subject to sampling for the presence of Prohibited Substances in accordance with the Anti-Doping and Controlled Medication Regulations (EADCMRs). Horses may be selected for sampling in accordance with obligatory testing, targeted or random sampling procedures. Refer to FEI Financial Charges for details of fees relating to Equine and Human Anti-Doping program (EADCMP), which OCs/NFs have the right to charge to the athlete (applicable for all FEI events worldwide).

8.2 ELECTIVE TESTING. FEI Veterinary Regulations Article 1058

Elective Testing may be carried out prior to an Event to check for the presence of Prohibited Substances. Please refer to <https://inside.fei.org/fei/cleansport/horses> for information and details.

XIII. HUMAN ANTI-DOPING

Athletes can be tested at any FEI Event, by the FEI or by other Anti-Doping Organisations with Testing jurisdiction. Organisers will have the responsibility to provide facilities and staff/volunteers to facilitate such Testing if requested by the FEI as outlined in article 22.3 of the FEIs' Anti-doping Rules for Human Athletes (ADRHA).

The ADRHA rules are published on the FEI's website at <http://inside.fei.org/content/anti-doping-rules>

XIV. ADDITIONAL INFORMATION

**1. THE FEI POLICY FOR ENHANCED COMPETITION SAFETY DURING THE
COVID-19 PANDEMIC**

The FEI Policy for Enhanced Competition Safety during the Covid-19 Pandemic ("Policy") (<https://inside.fei.org/fei/covid-19/return-to-play/policy-tools>) is mandatory and applies for any FEI Event taking place **as of 1 July 2020**. The Policy has been developed based on currently accepted best practices by the WHO and US Center for Disease Control (CDC) and will be continually reviewed and updated as more information becomes available. It is not intended to replace the applicable guidance and policies from domestic government and health authorities, but to supplement their recommendations with sport specific considerations.

The OC shall submit the risk assessment and mitigation plan (including name and contact details of the person in charge) to the FEI as an annex to the Event Schedule, **at the latest ten (10) working days before the event's deadline for Definite Entries.**

Events for which the FEI has not received the documented risk assessment and mitigation measures plan in accordance with article 2.1.g) of the Policy **will be removed from the FEI calendar** in accordance with Article 112.3 of the FEI General Regulations.

ASSUMPTION OF RISK / WAIVER OF LIABILITY

In consideration of being allowed to participate in the Event and related activities, all Participants (as defined in the Policy) acknowledge, appreciate, and agree that:

1. Participation includes possible exposure to and illness from infectious diseases including but not limited to COVID-19. While particular rules and personal discipline may reduce this risk, the risk of serious illness and death does exist; and,
2. The Participants knowingly and freely assume all such risks, both known and unknown, even if arising from the negligence of the OC or others, and assume full responsibility for their participation; and,
3. The Participants willingly agree to comply with the stated and customary terms and conditions for participation as regards protection against infectious diseases. If, however, a Participant observes any unusual or significant hazard during his/her presence or participation, the Participant will remove himself/herself from participation and bring such to the attention of the nearest official immediately; and,
4. The Participants, for themselves and on behalf of their heirs, assigns, personal representatives and next of kin, HEREBY RELEASE AND HOLD HARMLESS THE OC AND THE FEI, their officers, officials, agents, and/or employees, other participants, sponsoring agencies, sponsors, advertisers, and if applicable, owners and lessors of premises used to conduct the event ("RELEASEES"), WITH RESPECT TO ANY AND ALL ILLNESS, DISABILITY, DEATH, or loss or damage to person or property, WHETHER ARISING FROM THE NEGLIGENCE OF RELEASEES OR OTHERWISE, to the fullest extent permitted by law.

The Participants confirm to have read this release of liability and assumption of risk agreement, fully understand its terms, understand that they have given up substantial rights.

2.INSURANCES AND NATIONAL REQUIREMENTS

Equestrian sports involve inherent dangerous risks. To the greatest extent permitted by law, the FEI and the FEI Event Organiser shall NOT be liable for any damages relating to loss of property or injury of any kind to Athletes, Owners, Support Personnel or Horses at or in connection with an FEI Event and the FEI expressly excludes all such liability.

2.1 ATHLETES, OWNERS AND SUPPORT PERSONNEL

2.1.1 Personal Accident and Health Insurance

It is your responsibility as an Athlete/Owner/ Support Personnel to ensure that you have adequate personal accident insurance in place to cover your participation at FEI Events and in particular to insure against any personal injury or medical expenses arising from an accident, injury or illness which may occur at a FEI Event.

You should check with your National Federation to confirm if your National Federation's insurance policy (if any) covers personal accidents and/or illnesses which may occur when you are attending at/participating in FEI Events.

If your National Federation does not have a personal accident/health insurance policy or if the National Federation's insurance policy does not cover personal accident or health claims, then you should obtain your own personal accident and health insurance policy to cover your attendance/participation at FEI Events.

2.1.2 Personal Property Insurance

You should also ensure that you are insured against property loss, theft or damage which may occur at an FEI Event.

Again, the advice is to check with your National Federation to confirm if they have an insurance policy in place which would cover you in case of such property loss, theft or damage. If not, then you should obtain your own personal property insurance to cover such situations.

2.1.3 Press Equipment

Press equipment and other items left in the Press workroom, Press lockers, the Press Tribune or anywhere on the showgrounds are left entirely at the owner's risk. The Organising Committee does not accept any responsibility for any loss or damage to such equipment or items. Members of the Press are advised not to leave any equipment or personal items unattended.

2.2 ATHLETES AND OWNERS

2.2.1 Third Party Liability Insurance

As an Athlete/Owner you are personally responsible for damages to third parties caused by you, your employees, Support Personnel, your agents or your Horses. You are, therefore, strongly advised to take out third-party liability insurance providing full coverage in relation to FEI Events at home and abroad, and to keep the policy up to date.

The FEI and the Organiser will NOT be responsible for any damage caused to third parties by you, your employees, Support Personnel, your agents or your Horses.

2.2.2 Additional Liability Information

N/A

2.2.3 Horse Insurance

As an Owner you should ensure that your Horses are adequately insured against any injuries or illnesses they may sustain while participating at a FEI Event.

3. PROTESTS/APPEALS

To be valid, all Protests and Appeals must be made in writing and accompanied by a deposit of CHF 150.- or equivalent.

Protest and appeal forms are available on the FEI website:

Protest: <http://inside.fei.org/sites/default/files/FEI%20Protest%20Form.pdf>

Appeal: <http://inside.fei.org/sites/default/files/FEI%20Appeal%20Form.pdf>

4. DISPUTES

In the event of any discussion concerning the interpretation of the schedule (in translated languages), the English version will be decisive.

5. MODIFICATION TO SCHEDULE

In exceptional circumstances, together with the Approval of the Chefs d'Equipe, host NF delegate, if any, and the Ground Jury, the OC may change the schedule in order to clarify any matters arising from an omission or due to unforeseen circumstances. Any such changes must be notified to all Athletes and Officials as soon as possible and they must be reported to the FEI by the Foreign Judge.

6. ADDITIONAL INFORMATION FROM THE ORGANISER

Golf Carts and motorbikes require that all drivers hold a valid drivers license.

Art 109.13 GRs: All dogs must be leashed and affixed to a human or stationary object. Violation of this rule will incur a fine of CHF 100 per offence and, in case of a repeated offence at the Event, may lead to exclusion from the Venue.

Age of Athletes and Horses according to the Event's Category:

Event's Category	Age of Athletes	Age of Horses
Grand Prix/Grand Prix Special/ Grand Prix Freestyle/ Intermediate II/Intermediate A/ Intermediate B	As of 16 th year	Min 8 y.o.
Prix St. Georges/Intermediate I/ Intermediate I Freestyle	As of 16 th year	Min. 7 y.o.
CH-Y/CDIY/CDIOY	As of 16 th year to end 21 st year	Min. 7 y.o.
CH-J/CDIJ/CDIOJ	As of 14 th year to end 18 th year	Min. 6 y.o.
CH-P/CDIP/CDIOP	As of 12 th year to end 16 th year	Min. 6 y.o.
CH-Ch/CDICH/CDIOCh	As of 12 th year to end 14 th year	Min. 6 y.o.
CH-U25/CDIU25/CDIOU25	As of 16 th year to end 25 th year	Min. 8 y.o.
CDIAm	As of 26 th year	Min. 7 y.o. Medium tour Min. 8 y.o.
CDIYH	As of 16 th year	Min. 5 y.o. – Max. 7 y.o.
CH-M-YH-D	As of 16 th year	5 y.o. / 6 y.o. / 7 y.o.

DEDUCTIONS FROM PRIZE MONEY AT COMPETITIONS:

Full details of any deductions from prize money must be outlined in the schedule. This includes government taxes. If it is necessary for Organisers to deduct such taxes, they must provide participants with an official form indicating the amount of tax deducted.

The tax form must be provided to the athletes upon arrival and returned to the Organiser prior to departing.

IMPORTANT

The total amount of prize money shown for each Competition in the schedule must be distributed. (FEI General Regulations articles 127 and 128)

The value of the 1st prize must not exceed 1/3 of the total prize money announced for the competition. Distribution of prize money: distributed to 25 % of participants. If there are between 5 and 19 athletes in the competition, min 5 prizes must be distributed.

If there are 4 or less athletes in the competition, the table below applies.

Number of Starters	1	2	3	4	From 5 and above
1 st	33%	33%	33%	33%	All the prize money scheduled must be distributed among all placed athletes.
2 nd		25%	25%	25%	
3 rd			20%	20%	
4 th				15%	
Total distributed	33%	58%	78%	93%	

The amount to be given to each athlete must be stated in the schedule.

XV. ANNEXES

1. FEI ENTRY SYSTEM

Please fill the form below in order to provide you and the other members of your committee or your IT Providers access to the FEI Entry System.

FEI ID¹: 10231922
Name*: Woodley
First Name*: Andrew
E-Mail*: caledondressage@gmail.com
Access Rights*: Admin² Consult³

FEI ID¹: 10092760
Name*: Welch
First Name*: Anne
E-Mail*: anne@dancingdog.ca
Access Rights*: Admin² Consult³

FEI ID¹: 10009034
Name*: Raleigh
First Name*: Lloyd
E-Mail*: lloyd@nominate.com.au
Access Rights*: Admin² Consult³

- 1) If already have an FEI user account.
- 2) Provide you the required access to manage entries and substitutions and download entries/lists.
- 3) You are just able to consult and download the entries/lists.
- *) Mandatory Fields

2. RESULTS

In order to proceed with the results publication and for qualification purposes the FEI requires results to be uploaded directly on the FEI Database within two days after the conclusion of the event.

All relevant information, file format and tutorial can be found on this page:

<http://inside.fei.org/fei/your-role/Organisers/dressage/results-forms>

If you or your provider are unable to produce the required files, results will be accepted by e-mail to dressageresults@fei.org, in the proper XML format immediately after the event. Please refer to compulsory format for CDIs; the file can be downloaded using the following link: <http://inside.fei.org/fei/your-role/Organisers/xml-format>

All results must include FEI Passport Registration number of horses and FEI ID number of Athletes.

Please note that as per Art 109.6 (GR): OCs of International Events must inform the FEI and NFs whose teams or individuals have taken part, of the results and prize money paid to each placed Athlete and team, within two (2) days following the Event for all disciplines managed by an online entry system and five (5) days for all other discipline(s), unless otherwise specified for qualification and ranking reasons as communicated by the FEI. Failure from organisers of International Events to provide the FEI with the appropriate result(s) and/or prize money information by the aforesaid deadline and/or in the aforesaid format shall entail a warning for the first violation and thereafter a fine of CHF 1'000.- per violation.