

**BIGMAX**<sup>®</sup>  
BY DRIVE PRODUCTS

STRUCTURAL INTEGRITY : ENGINEERED QUALITY

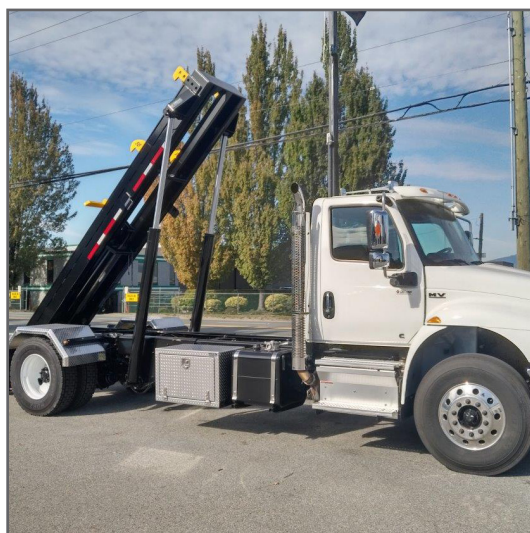


# CABLE ROLL OFF SYSTEM





# + CABLE ROLL OFF SYSTEM SPECIFICATION SHEET



STANDARD FEATURES	25 TON	35 TON	40 TON
BIN SIZE	Up To 24' Ft Bodies Or Containers		
IDEAL CHASSIS	Single Axle	Tandem	Triaxle
IDEAL CAB AXLES	157" - 190" Ca	172" - 186" Ca	162" - 192" Ca
CONSTRUCTION	12" X 4" X 0.250 Hss Tube Construction (Other Thickness Available)		
REEVING CYLINDER	7" Diameter 156" Stroke 3 Stage Hard Chrome Plated Pull-On/Push-Off Reeving Cylinder		8" Diameter 165" Stroke 3 Stage Hard Chrome Plated Pull-On/Push-Off Reeving Cylinder
LIFTING CYLINDER	5" Bore X 72" Stroke, 3' Chromed Rod Double Acting Lifting Cylinders		
SHAVE HEAD ASSEMBLY	Removable/Greasable Machined Steel Sheave With Profile Bunt Lighting Holes For Ease Of Maintenance		
HINGE BLOCKS	Heavy Duty Greasable 2-1/2" Pin		
OIL TANKS	50 Gallon Frame Mounted Hydraulic Oil Tank With Sight Glass , Temperature Gauge And Return Filter		75 Gallon Frame Mounted Hydraulic Oil Tank With Sight Glass , Temperature Gauge And Return Filter
CONTROL SYSTEM	Premium In-Cab 4 Way Air Control Console C/W Pto Switch And Light, Proximity Switch Warning Light For Rails Up And Tarp Gantry Combined		
TARP SYSTEM	Various		
WEAR POINTS	C-1045 Greasable Alloy Pins At All Wear Points		
SAFETY	Heavy Duty Transport Safety Chains For Tie Downs		
BIN LOCKING	3 Position Adjustable One Handed Bin Locks At Front With Adjustable Dimensional Settings Of Your Choice		
PAINT & FINISH	Sand Blasted, Epoxy Primed And Epoxy Painted Black Or Colour Of Choice. 3m Diamond Grade Conspicuity Marking Tape In Both Sides And Back End Of Unit		
LIGHTING	Led Lighting In Steel Fenders Complete With Sealed Wiring Harness And Plasma Profile Cut Light Holes For That Perfect Fit		
TIPPING ANGLE	Up To 53 Degrees (Specific)		
OPTIONS	<ul style="list-style-type: none"> <li>Hot Shift Pto For Automatic Transmission</li> <li>1/4" Checker Plate Or Smooth Aluminum Fenders</li> <li>Alum Double Door Cam Latched Cabinet</li> <li>Led Work Lights Installed On Tarp Tower Or Desired Location</li> <li>Pioneer Hr 2000 Pto Driven Tarp Or Any Tarp Of Choice</li> </ul>		<ul style="list-style-type: none"> <li>5/8" Steel Plate Trailer Town Apron With Premier 370 45 Ton Air Operated Slack Reducing Pintle Coupler</li> <li>Complete With Air &amp; Electrical In User Friendly Locations</li> <li>Additional Live Trailer Hydarulic Options Custom Designed For Your Specif Application Needs</li> </ul>





**REGINA**

288 Hodsdman Rd.  
Regina, SK  
S4N 5X4  
306.359.3677

**EDMONTON**

11465-259 Street  
Acheson, AB  
T7X 6C4  
780.960.6826

**CALGARY**

4311 122nd, Ave S.E.  
Calgary, AB  
T2Z 4V3  
403.720.8033

**VANCOUVER**

19150-96th Ave #1  
Surrey, BC  
V4N 3R3  
604.888.4464



STRUCTURAL INTEGRITY : ENGINEERED QUALITY



Brought to you by

ISO Certified by an Accredited Registrar • National Safety Mark Approval • ©Drive Products 2021

Drive Products reserves the right to make changes in specifications, packages, or to discontinue options without notice at any time.

[www.driveproducts.com](http://www.driveproducts.com)