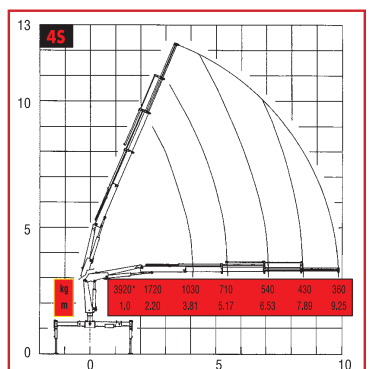
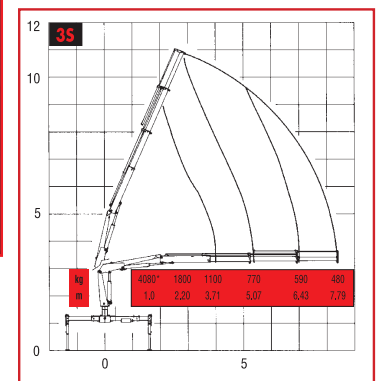
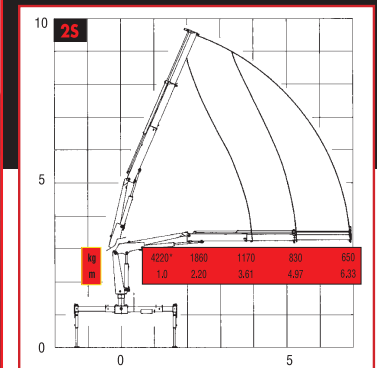
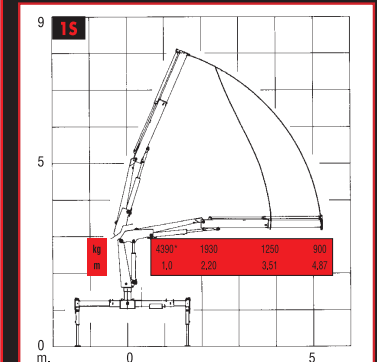




TCA-600



* Not with remote control

(*) Theoretical lifting capacity

TCA-600 (4.3 TM CLASS)

- Lifting moment: 4.4 tm
- Max. vert. reach: 12.06 m
- Slewing angle: 380°
- Slewing time: 15 s/180°
- Max. working heel: 4°
- Working pressure: 255 bar
- Crane w/o stab.: 790 kg
- Weight of stab.: 85 kg
- Oil tank capacity: 35 l
- Oil flow: 16 l/min
- Dim.: 2100x1845x560 mm
- Sug. truck: min. GVW 5 ton

STANDARD

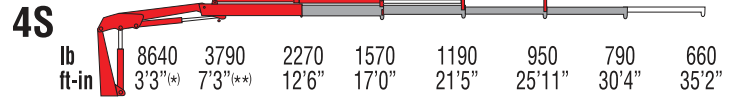
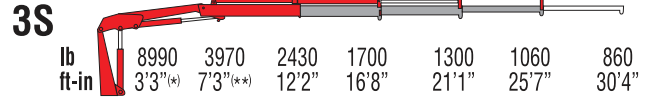
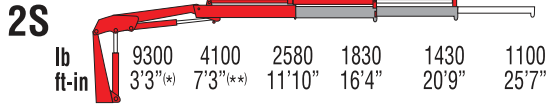
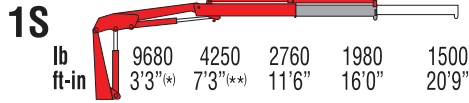
- Hexagonal booms
- Load limiting device (CE)
- Independent extension cylinders
- Flanged valves
- Assembly kit included
- Oil tank
- Swivel outrigger foot
- Designed in accordance with EN12999-DIN 15018
- Fatigue test classification: B3
- Fittings SAE-JIC
- Dual-side controls (No with radio remote control)
- Light indicator for correct stabilizer stowing (CE)
- Mechanical rotation limitation (CE)

OPTIONAL

- Outriggers with hydraulic extension*
- Supplementary elements activation
- Mechanical booms
- Extra extensible stabilizers
- Top seat
- Operator Full Protection*
- Rotating stabilizers

TCA-600

TECHNICAL DATA

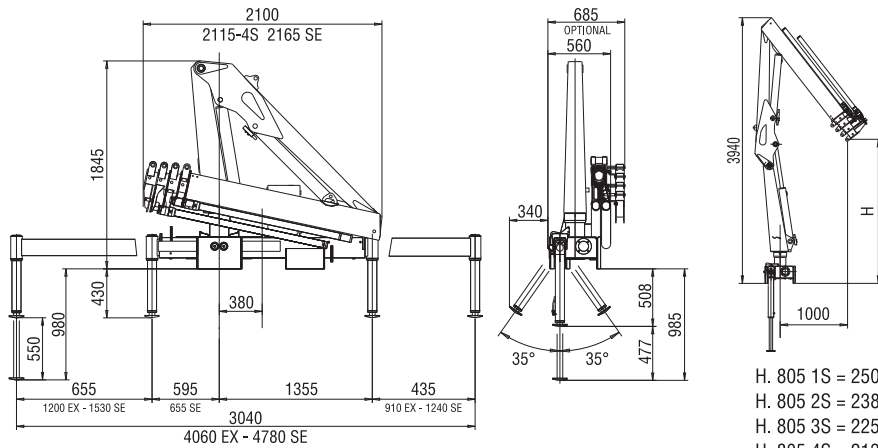


*) Theoretical lifting capacity

**) Fixed hook capacity

MODELS	Lifting Moment lb.ft	Max Vertical Reach (Hydr) ft-in	Working Pressure psi	Oil Flow gal/min	Slewing Angle °	Weight lb	Dimensions (WxHxD) inches
1S	31800	30' 4"	3840	4,2	380	1610	83x73x23
2S	-	35' 0"	3840	4,2	380	1720	83x73x23

MODELS	Lifting Moment lb.ft	Max Vertical Reach (Hydr) ft-in	Working Pressure psi	Oil Flow gal/min	Slewing Angle °	Weight lb	Dimensions (WxHxD) inches
3S	-	39' 8"	3840	4,2	380	1830	83x73x23
4S	-	44' 3"	3840	4,2	380	1930	83x73x23



MAX. LIFTING MOMENT	MAX VERTICAL REACH				SLEWING ANGLE	SLEWING SPEED	MAX WORKING HEEL
	1s	2s	3s	4s			

4.4 (tm)	hyd.	7.82m	9.23m	10.67m	12.06m	380°	15 s	4° (7%)
	man.	9.25m	10.67m	12.08m	13.49m			

WORKING PRESSURE	CRANE WEIGHT WITHOUT STABILIZERS				WEIGHT OF STABILIZERS	OIL TANK CAPACITY	OIL FLOW TO THE DISTRIBUTOR BOX
	1s	2s	3s	4s			

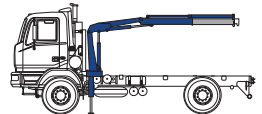
255 bar	645 kg	695 kg	745 kg	790 kg	85 kg	35 l	16 l/min
---------	--------	--------	--------	--------	-------	------	----------

ACCESSORIES

- Outriggers with hydraulic extension*
- Supplementary elements activation
- Mechanical booms
- Extra extensible stabilizers
- Top seat
- Operator Full Protection*
- Rotating stabilizers

* Not with remote control

RECOMMENDED TRUCK
WHEELBASE: 3450 mm
M.T.T. ton 5,0
G.V.W. ton 5,0



1465-259 Street Acheson AB T7X 6C4 Canada

SALES & GENERAL INQUIRY & DISTRIBUTION

1-800-661-7335 or 780-960-6826

bigmaxsales@driveproducts.com

To learn more about Drive Products visit

www.driveproducts.com

BIGMAX[®]
BY DRIVE PRODUCTS

bigmaxproducts.com