

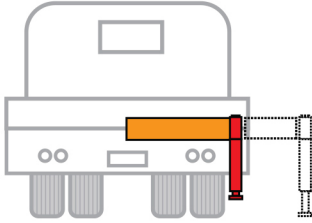
BIGMAX[®]

BY DRIVE PRODUCTS

OUTRIGGER STABILIZERS

BIGMAX Outrigger Type H

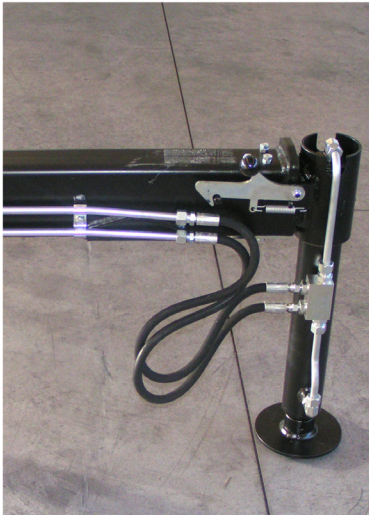
Type H



Half Stabilizer

This outrigger has a cross beam with one side extension and one hydraulic leg. It provides an economical solution for stabilizing side-mounted equipment including small cranes ranging in size from 2 to 4 t/m. Type H outriggers are typically used on truck chassis under 19,500 GVW.

This outrigger comes in two styles – with a fixed leg for cranes under 3 t/m and with an adjustable leg for cranes from 3 to 4 t/m.



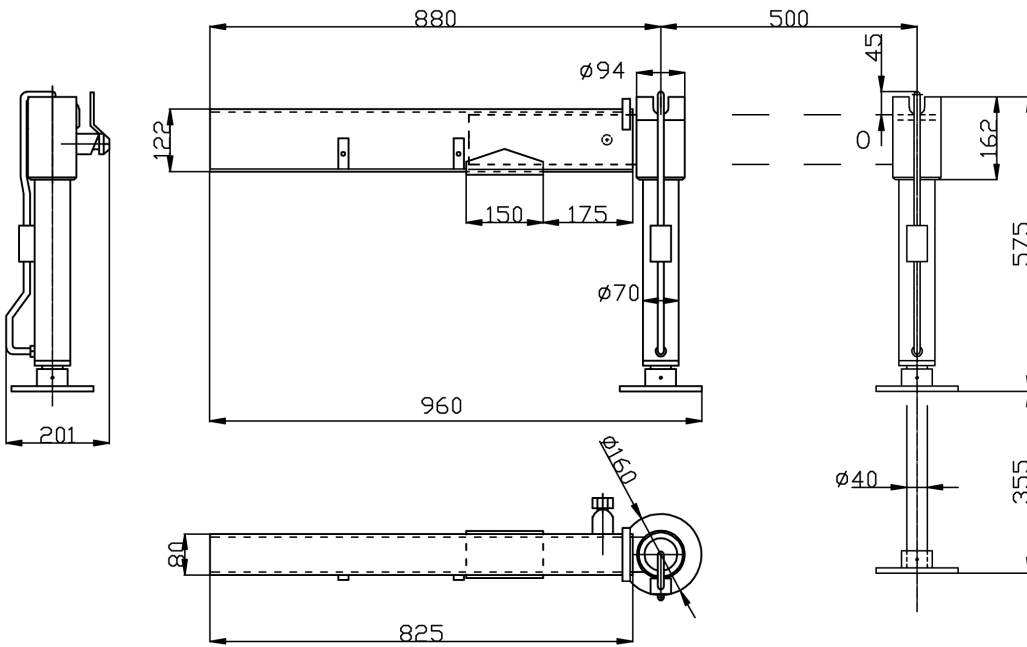
Continued on next page

BIGMAX CRANES by Drive Products

26230 Township Rd 531A,
#111
Acheson, AB T7X 5A4

Toll free: 800-661-7335
jvehse@driveproducts.com

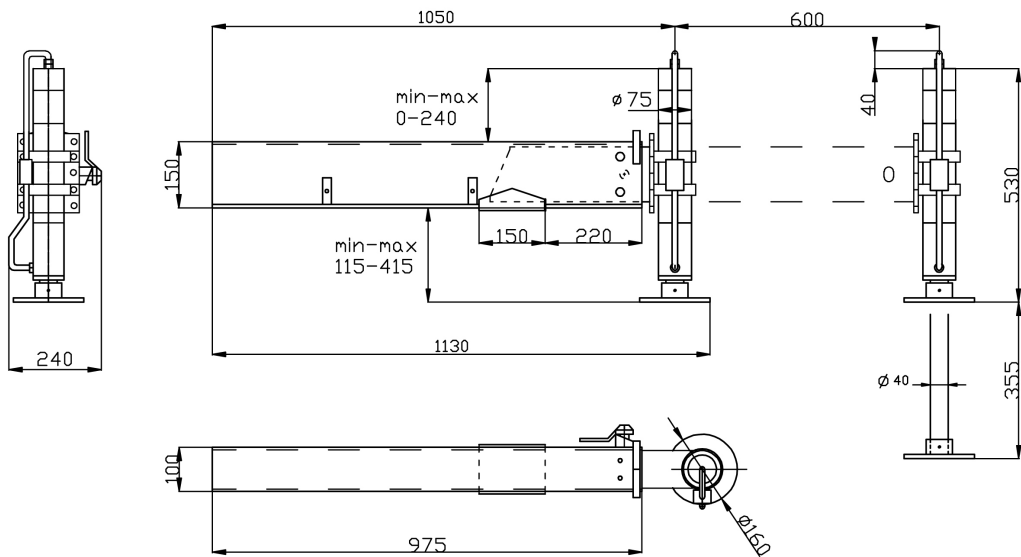
Fixed Leg/Size O (for cranes < 3 t/m)



How to Select Outriggers

A safe lift begins with choosing the right crane and outriggers for the job. The main function of outriggers, also known as 'stabilizers', is to keep a truck and crane unit stable while in work mode. This can generally be accomplished with a single set of outriggers. In some cases, adding a second set of outriggers can create a more stable platform for loading and unloading materials. This additional support minimizes shifting and leaning creating much less stress on the equipment and the crane operator.

Adjustable Leg/Size OA (for cranes up to 4 t/m)



Another important benefit of auxiliary outriggers is the reduced wear and tear on the crane rotation system due to limited side loading. Studies have pointed to the additional repair cost and loss of productivity resulting from operating cranes without adequate outriggers.