

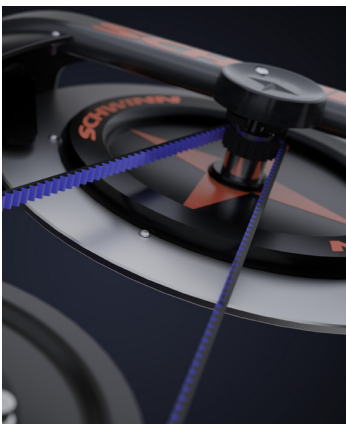


SCHWINN



AC™ PERFORMANCE 7320

With the appeal of intelligent design and the durability of an aluminum frame, the AC Performance was designed to elevate studio cycling experiences worldwide. Our Carbon Blue belt and ergonomically designed performance handlebars mimic the authentic feel of an outdoor bike, creating a broad-based appeal that attracts experienced and novice riders alike. When you want a fully adjustable experience, chose the AC Performance, featuring the versatile Schwinn Fit System which enables seat and handlebar adjustments for refined positioning.



CARBON BLUE DRIVE SYSTEM

The CARBON BLUE BELT replicates the feel of a traditional chain drive giving the rider an authentic outdoor experience. The belt never requires lubrication, tension never needs to be adjusted and the carbon fiber reinforcement is incredibly durable. Our 10 Year Warranty is the longest of any belt or chain on the market.



INNOVATIVE AND POWERFUL

Schwinn's Echelon2 consoles utilize direct or estimated power and can be connected to a group display or leaderboard system via ANT+.

FEATURES

| | |
|------------------------------------|--|
| PRODUCT WEIGHT | 102 lb (46 kg) |
| SHIPPING WEIGHT | 113 lb |
| PRODUCT FOOTPRINT (LXWXH) | 42 in x 21 in x 51 in (107 cm x 53 cm x 130 cm) |
| MAX PRODUCT LENGTH | 54 in (137 cm) |
| SHIPPING DIMENSIONS (LXWXH) | 44 in x 11 in x 38 in |
| FRAME MATERIAL | Aluminum |
| FRAME FINISH | Powder Coated |
| FRAME COLOR | Eagle White |
| DRIVE SYSTEM | Carbon Blue™ Belt Drive |
| RESISTANCE SYSTEM | 6- Magnet Non- Contact Magnetic Resistance |
| Q-FACTOR | 168 mm |
| HANDLE BAR | Performance Plus™ |
| SADDLE | AC Saddle |
| FORE/AFT ADJUSTMENT SYSTEM | Micro-adjustment |
| HEIGHT ADJUSTMENT SYSTEM | Pop-Pin |
| FLYWHEEL | aluminum, thin profile |
| PEDALS | Morse Taper Double Link - SPD and athletic shoe cage |
| USER HEIGHT RANGE | 4'11" to 6'8" (150 cm to 203 cm) |
| MAX USER WEIGHT | 350 lb (159 kg) |

COMPATIBLE CONSOLES

| | |
|------------------------------------|----------|
| ECHELON2G | NA |
| ECHELON2 | 740-8727 |
| ECHELON2 FOR 4III® | 718-5767 |
| ECHELON2 WITH POWER UPGRADE | 740-8941 |
| CADENCE PRO | 740-8803 |

COMPATIBLE ACCESSORIES

| | |
|------------------------------|--------------------|
| PEDALS | 718-5869, 740-8689 |
| BIKE NUMBERING TAGS | 718-5943-35 |
| DUMB BELL HOLDERS | 718-5957 |
| POWERMETER CRANKS | 718-5765 |
| MOTOSUMO PHONE HOLDER | 700-0475 |



CUSTOMIZATION OPTIONS

| | |
|--------------------------|--|
| FRAME COLORS | Black Grey 83, Zinc Yellow 32, Wrinkle Black 26, Ultramarine Blue 73, Traffic Grey 57, Speckled Red 82, Silver 13, Quantum Silver 79, Purple 49, Powerhouse Granite 62, Peel White 61, Pearl Night Blue 80, Pastel Orange 77, Moss Green 56, Black 60, Karminrot 30, Eagle White 25, Candy Red 27, Candy Blue 65 |
| BRANDING (DECALS) | head tube, down tube, forks, inner flywheel, flywheel rim, seat tube |
| PEDALS | Morse Taper Double Link, Morse Taper Schwinn Triple Link Delta-compatible, Morse Taper Schwinn Triple Link Keo-compatible |
| SADDLES | AC, SC, Road, Comfort |
| CONSOLES | Echelon 2 Console, Cadence Pro |
| POWERMETER CRANKS | 4iiii(R) direct crank-based power measurement |
| LED LIGHTS | NA |
| ACCESSORIES | Numbering tags, Dumb bell holders |



SC Saddle



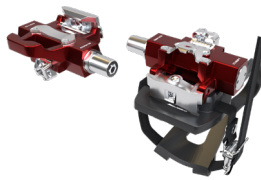
Comfort Saddle



Road Saddle



AC Saddle



Morse Taper Triple Link™
Keo-compatible pedals



Standard Morse Taper
Double Link™ pedals



Morse Taper Triple Link™
Delta-compatible pedals

Core Health & Fitness is more than gym equipment, we offer innovative solutions for all your facility needs. This is why we've brought together five of the most recognizable fitness brands to ensure our customers can offer their members authentic fitness experiences. Whether working with us directly or through our partners and distributors worldwide, we provide the highest quality equipment backed by a service and support team that will always go the extra mile to get you what you need, when you need it. Partner with us and see how our Core Values motivate our every decision.

