



Smart Solutions



Internet Of Things



MEASUREMENT / CHAMBERS / VALVES

PRODUCT RANGE

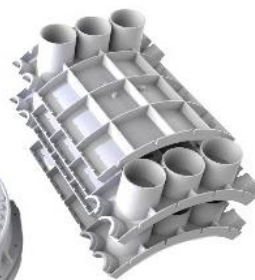
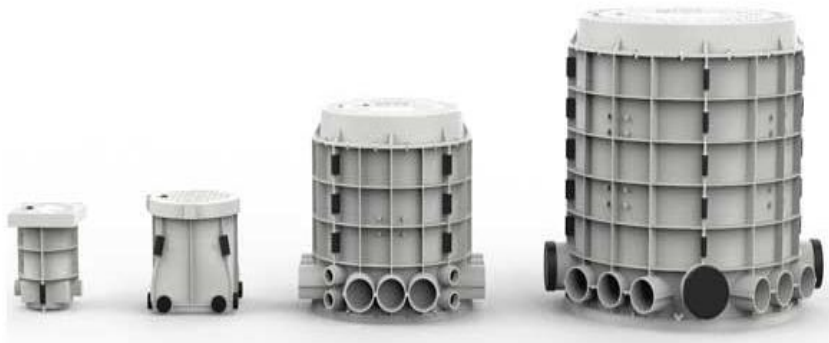
• MEASUREMENT PRODUCTS

- Domestic Water Meters
- Bulk Water Meters
- Strainers
- Meter Boxes
- Pre-Paid Meters
- Smart Meters



Meter Chambers & Lids

- Meter & Valve Chambers
- Manhole Lids
- IOT System
- Concrete Tops



• Valves

- Gate Valves
- Diaphragm Valve
- Non Return Valve
- Check Valves
- Knife Gate Valves
- Ball Valves



INSTRUMENTATION & ANALYTICS CAPABILITY

PRODUCT RANGE

- **Flow Measurement**

- Magnetic Vortex
- VA / Coriolis Thermal Mass
- Ultrasonic Open Channel Flow



- **Pressure**

- Differential Gauge Pressure



- **Level Measurement**

- Ultrasonic Radar
- Magnetic Float
- Laser RF Capacitance
- Magnetostrictive Level Switches



- **Temperature Measurement**

- Rail Mount Head Mount
- Field Transmitters TC Sensors



- **Liquid Analysis**

- pH Conductivity
- Dissolved Oxygen Turbidity
- Dissolved Organics & Nitrate
- Aluminium Iron
- Manganese Phosphate
- Ammonia Residual Chlorine
- Chlorine Dioxide & Ozone
- Chloride Flouride
- Nitrate Ammonia
- Silica Phosphate Analysers
- Sodium Analysers Hydrazine Analyser



- **Gas Analysis**

- Combustion Gas Analysis
- O2 Flue Gas Analyser
- Emission Monitoring
- Hydrogen Purity Monitoring



- **Recorders / Process Controllers / Indicators.**

- **Positioners & I/P Converters**

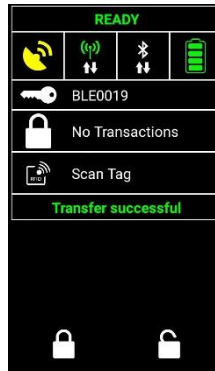


DIGITALIZATION/FLOW VERIFICATION

SOLUTIONS

- **AMR/AMI/IOT Systems**

- Software Monitoring for PC and Mobile.
- Cloud Based Software
- Walk-by & Drive-by Solutions
- Smart Lock NOC
- GLAM System



- **Pre-Paid Systems**

- Water Meter Solutions
- Electricity Meter Solutions

- **Communication Protocols**

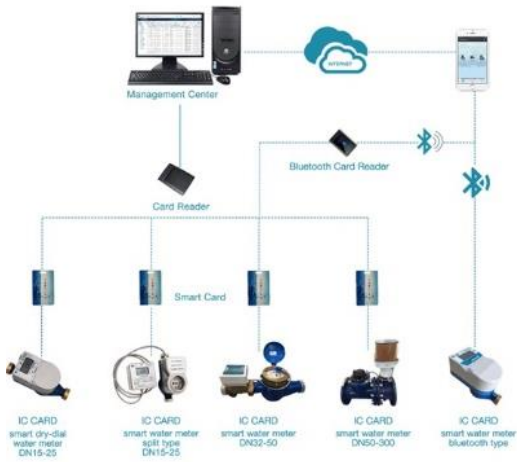
- | | |
|------------|---------------------|
| ▪ MODBUS | Wireless HART |
| ▪ PROFIBUS | Foundation Fieldbus |
| ▪ IOT | Sigfox |
| ▪ GSM/GPRS | LoRA |
| ▪ Mbus | NB-IOT |
| ▪ SqwidNET | Wireless Radio |



- **Flow Meter Verifications**

- In-Situ Verification
- Reference Meter Verification
- Off-site calibration





DRIVES / AUTOMATION

- **Drive Product Range**

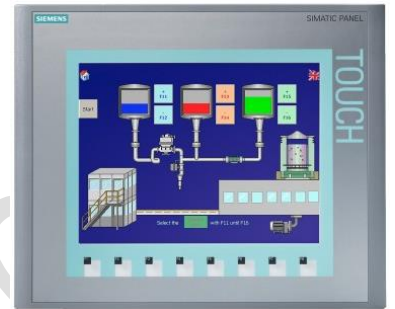
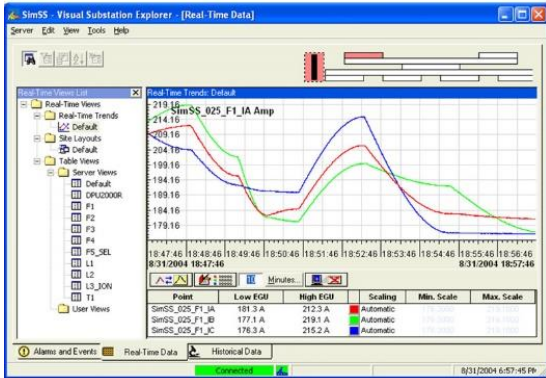
- General Purpose Drive
 - ACS480, 0.75 to 22kW, 380 to 480 V
 - ACS580, 0.75 to 500kW, 380 to 480 V
 - ACS310, Pump & Fan, 0.37kW to 22 kW
- Micro Drives
 - ACS150, 0.37kW to 4kW
 - ACS310, Pump & Fan, 0.37kW to 22 kW
 - ACS355, 0.37kW to 22 kW
- Machinery Drives
 - ACS355, 0.37kW to 22kW
 - ACS880-M04, 0.37kW to 45kW
- Industrial Drives
 - ACS880, 0.55kW to 6000kW
- Industry Specific
 - ACH580, HVAC, 0.75kW to 500kW
 - ACQ580, Water, 0.75kW to 500kW



- **AUTOMATION / PLC / SCADA**

- PLC Systems
- SCADA Software
- HMI Panels
- Pump Control Panels
- MCC Control Panels





OUR SERVICES AND SUPPLIER PRINCIPLES

With more than 50 years of combined expertise in all Industries, we provide specialised Smart Solutions to solve our Customer needs. We ensure that we partner with Suppliers that are market leaders in their field to ensure Smart Solutions with the latest technology is provided to our Customer.

Our focus is on providing sustainable Smart Solutions, drawing on experience and new technology not only from within but from our international business partners. This allows our Customer to have the latest and best Smart Solutions for any application.

INDUSTRY

- Water & Waste Water
- Chemical
- Food & Beverage
- Industrial Gas
- Emission Monitoring
- Metals, Mineral & Mining
- Oil & Gas
- Power
- Pulp & Paper
- Power & Energy
- Utilities
- Agriculture Industry
- HVAC

SALES & SERVICES

- Instrumentation
- Drives & Motors
- Valves
- Automation & Control
- AMR Solutions

- Pre-Paid Solutions
- In-Situ Verification/Meter Checks
- Data Logging
- Instrument Repairs, Testing
- Site Audits

Specialist Smart Solutions and Supplier to All Industries

Contact	Mobile	Email
Michelle Scheepers	+27 71 364 0087	michelle@mssmartsolutions.co.za
Stephen Scheepers	+27 82 442 4379	stephen@mssmartsolutions.co.za
Sales	+27 82 442 4379	sales@mssmartsolutions.co.za
Accounts	+27 71 364 0087	michelle@mssmartsolutions.co.za

Address: 3 Model Road, Witfield, Boksburg, 1459, South Africa
P.O.Box 10199, Eden Glen, Gauteng, 1609, South Africa

LEVEL 1 B-BBEE

Website: www.mssmartsolutions.co.za



MSS SMART SOLUTIONS