



**Candlewood Amateur
Radio Association Inc.**
P.O. Box 3441
Danbury, CT 06813

**Hamfest This
Weekend!
Sept. 14th 2003
Details Enclosed**

**Regular Meeting
Friday,
September 12th
at 8:00 PM**

Meeting Topics:
Hamfest
Emergency Communications



CAPERS

Candlewood Amateur Radio Association - Post Office Box 3441 - Danbury, CT

President – Frank Etzler – N8WXQ - phone - 860-350-3523
Vice President – Jeff Cantor –K1ZN - phone 203-798-6860
Secretary – Martha Babbitt – KB1IES - phone - 860-350-8804
Treasurer - John Ahle – W1JMA - phone - 203-438-6782

Issue: September 12, 2003

Meeting Friday, September 12, at 8:00 p.m.

Don't Miss it!

CARA Hamfest: Sunday, September 14!

CARA Meetings

CARA's regular meetings during the year are held on the second Friday of each month, beginning at 8:00 p.m., at St. Paul's Church Hall, Brookfield Center, CT. Informal "rag chewing" begins outside the church hall at 7:30 p.m.

The next regular meeting of the Candlewood Amateur Radio Association will be on Friday, September 12 – with the CARA annual Hamfest to take place just two days later, on Sunday, September 14! This is a major club event and every member is invited to help. Please contact John W1JMA if you have not already signed up for an assignment.

Please mark your calendars and plan to attend both the first regular meeting of the Fall and the CARA-sponsored Hamfest at Edmund Town Hall in Newtown. The attached flyer has all the details.

Volunteer Staff Needed at Hamfest

The CARA hamfest is the most important club activity that we have each year. What makes it a success is the volunteers from the club all pitching in to help.

We need all hands on deck for this event. Contact John Ahle, W1JMA at (203) 438 6782 to let him know when and where you will volunteer.

VE Test Session September 13

Just a reminder to all that the Volunteer Exam (VE) test session sponsored by CARA will be held on Saturday, September 13 (day before the Hamfest) and NOT on September 6th as some folks may have mentioned verbally. Here are the details:

13-Sep-2003

Sponsor: CANDLEWOOD ARA

Time: 11:30AM (Walk-ins allowed)

Contact: FRANK R SILEO
(203)438-0218
Email:
75474.565@COMPUSERVE.COM

VEC: ARRL/VEC
Location: SAINT PAUL'S CHURCH
BROOKFIELD CENTER near Rts.
25 and 133 (EXIT 9 OFF I-84, head
north)
BROOKFIELD, CT 06804

Days Shorter...DX Fun Longer

As the ARRL propagation report reminds us, with the days getting shorter, the fall DX season approaches and conditions will begin to improve. In fact, during the CARA net Sunday, August 31, Bill W1WJB reported a DX pile-up on the portion of the 10M band the club usually designates for rag-chewing after the VHF net.

What to expect? Here are some excerpts from the August 29 ARRL propagation forecast bulletin # 35:

"The higher frequencies should be opening during the day and 80 and 40 meters will open earlier and more reliably after dark. As an example, over the path from California to Japan, a month ago 10 meters offered no reliable communication.

"Currently 10 meters may have an opening on some days from around 2100-0430z. But around the

equinox, the same California to Japan path on 10 meters looks quite good, with much stronger signals and reliable openings from 2130 to 0130z.

"On the new 60 meter band from California to Georgia, a month ago signals were very strong from sundown on the west coast until sunrise at the east end. Strongest signals would be from 0400-1030z, with reasonable openings as early as 0130 and as late as 1230z.

"Currently the strongest signals should run from around 0330-1100z, with possible openings from 0030-1300z. Around the third week in September, strongest results should be from 0300-1100z, with openings generally good from 0000-1330z. September will also have much lower atmospheric noise on the lower frequencies.

"One caveat about the equinox. During this phase of the solar cycle, although HF propagation should be better, there is also a greater chance of severe geomagnetic storms and aurora. This is because around late September the interplanetary magnetic field near earth tips far to the south. This makes the earth vulnerable to solar wind. For more on the interplanetary magnetic field and how it affects geomagnetic conditions, see

<http://spaceweather.com/glossary/inf.html> .”

Level 1 EmComm Class Starting
A multi-session Level 1 Emergency Communications class will begin on Saturday September 20 – from 9-1 p.m., at the American Red Cross in Farmington. The class will be held for four successive Saturdays, September 27, October 4 and October 11.

Instruction for this special “hybrid” class will be through a combination of on-line, on-the-air, and in-person tutoring. An administrative fee of \$10 will be collected at the first session. Upon graduation, all students will receive a certificate suitable for framing, and a wallet-sized ID card.

Registration is via the ARRL on-line EC-001 registration page <https://www.arrl.org/forms/cce>.

PLEASE NOTE: The registration period noted in the announcement is from September 1-5, but since this is the earliest edition of the newsletter that the notice could appear, please check promptly to see if space is still available.

For additional information you may also contact Dan Miller, K3UFG (k3ufg@arrl.net), (860) 206-3379, or Chuck Rexroad, AB1CR (ab1cr@arrl.net), (860) 647-9275.

Nets

CARA Weekly Net: Sunday nights at 7:30 p.m. 147.30+ (PL 100)

WestConn Net: Nightly at 8:30 p.m. 147.18+ (PL 114.8)

Tips Net: Tuesday evenings at 7:30 p.m. on 146.73- (PL77) (linked statewide).

R-Com Weekly Net: 145.47- (PL100)
Thursday Evenings, 8 p.m.

ConnARES Area One (North) VHF Net: Mondays, 8 p.m., alternately on 147.30+ (PL 100), or 146.73- (PL 77 or 100).

Conn ARES Issues Net: 3.965 Mhz +/-,
Thursdays @ approx 6:15 p.m. (following CT Phone Net)

ConnARES Area One Reminder

ConnARES Area One (North) VHF Net is currently meeting weekly, on Monday nights at 8 p.m. The net will be held alternately on the CARA 147.30+ (PL 100) repeater, and on the New Milford repeater, 146.73- (PL 77 or 100).

Announcements will be made at the beginning of each net confirming the repeater in use for that evening.

The ARES issues/discussion HF Net is held on Thursdays, on 3.965 MHz, immediately following the CT Phone Net, which begins at 6:00 p.m. and signs about 6:15 p.m.

For additional information contact Bill, W1WJB, DEC, Area One, bill@StudioOne-ct.com.

Editor's Note:

Just a reminder that we're always looking for interesting features and news articles for the CARA CAPERS. Paid-up members are also welcome to place no-charge classified ads for ham-related items. Just drop an email note to the CAPERS editor, Barry Connolly, KA1JDD@arrl.net, or call: 203-748-1033.

Although as early as possible is preferred, our deadline for articles for each month's edition generally is the Friday before the regular Friday monthly meeting.

For Sale!

6 Meter Beam A50- 3 S. Brand new in the box \$100.

TET, 3 element Yagi, 10-15-20 \$50.00

Arrow 6 Meter, ¼ wave ground plane antenna. Brand new in the box \$40.00

MFJ-224 2 Meter FM analyzer, Tests: signal, discriminator, deviation, feedline loss and more. Brand new in the box \$130.

Dell 750, Pentium 4, 21" Sony Trinitron Monitor (dual input), 25 gig HD, 128 K RAM, 1 DVD/CD drive, 1 CDRW drive, 1 3.5 floppy drive, internal 56K fax/data modem. Soundblaster card, with speakers, keyboard, mouse. All manuals. HD completely reformatted, XP Professional installed. \$600. OBO

Contact: Pete, KZ1Z -- e-mail to: kz1z@arrl.net or via 147.300 repeater.

CARA Web Site

Visit the CARA Web site at: www.danbury.org/cara.

Western CT Hamfest

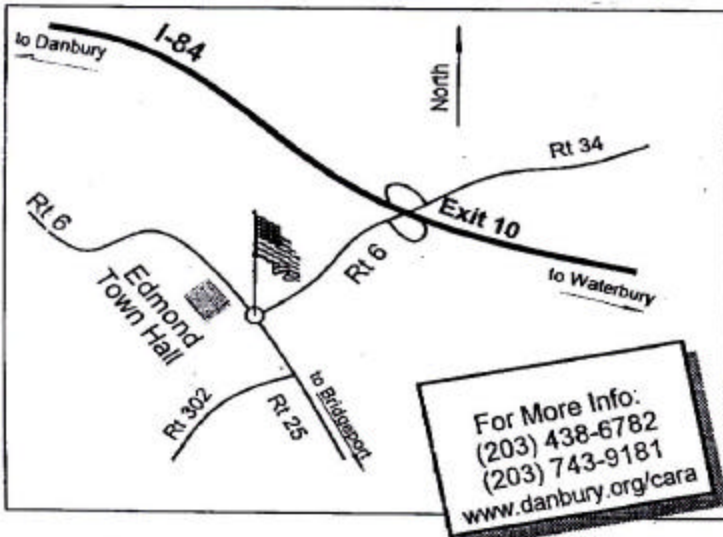
- **Sunday, September 14, 2003**
- **Edmund Town Hall, Route 6, Newtown CT**
- **Set-up 7 a.m.**
- **Doors open 8:30 a.m. – 12:30 p.m.**



Talk-in on 147.300+ PL 100



Sponsored by Candlewood
Amateur Radio Assoc.
(CARA)



- **Admission \$5 (under 10 free)**
- **Tables \$12.50 (includes 1 admission)**
- **Tailgate \$8 (includes 1 admission)**
- **Ham Radio Equipment**
- **Computer Gear**
- **Door Prizes**
- **Refreshments**
- **Ample Parking**
- **Rain or Shine**



Candlewood Amateur Radio Association (CARA) Hamfest, September 14, 2003
c/o John Ahle – W1JMA, 120 Fire Hill Road, Ridgefield, CT 06877

Name: _____ Phone # (daytime) _____

Address: _____ Phone # (evening) _____

Please reserve ____ tables, at \$12.50 each. I need ____ do not need ____ electricity.

Amount enclosed: (\$ _____). Please make checks payable to C.A.R.A.