

## PRODUCTS

# STRENGTH™ 1-0-0



## ULTIMATE TURF DEFENSE

Strength is purpose-built to cultivate the strongest turf possible, combining phosphite to activate plant defenses with calcium and silica to safeguard vital functions like photosynthesis. Short-chain amino acids accelerate injury recovery, while copper and reacted ammonium lactate drive energy production and optimize plant performance. Count on Strength for the fitness levels you've been looking for!

✔ TOUGH    ✔ DEFENSE    ✔ ARMOR

## AGRONOMIC USES

HIGH PERFORMANCE PLAYING CONDITIONS

MECHANICAL STRESS

HIGH TEMPERATURES

HEAVY FOOT TRAFFIC

DROUGHT

IRRIGATION WATER QUALITY

## INSIDE THE BOTTLE

### GUARANTEED ANALYSIS

**1.00%**

Total Nitrogen  
(N)

**9.37%**

Phosphite  
(PO<sub>3</sub>)

**4.00%**

Calcium  
(Ca)

**4.00%**

Silica  
(Si)





**0.17%**

Copper  
(Cu)

### NON-PLANT FOOD INGREDIENTS

Amino acids, Reacted Ammonium Lactate (RAL)

### DERIVED FROM

 Calcium Phosphite	 Copper Phosphite	 Calcium Nitrate
 Amino Acids	 Silica Dioxide	 Ammonium Lactate

## HOW TO USE

Strength can be added to other products to build resilience and support stress tolerance. Use Strength before and during stress periods to optimize plant performance and durability. Due to the highly reactive nature of calcium and phosphite we suggest a jar test prior to new tank mixes.

## PRODUCT APPLICATION RATES

APPLICATION	USE RATES	FREQUENCY
Cool-season Turf	Apply 2.5 - 5 fl. oz. / 1,000 ft <sup>2</sup> in 1 - 2 gallons of water	7 - 14 days
Warm-season Turf	Apply 2.5 - 5 fl. oz. / 1,000 ft <sup>2</sup> in 1 - 2 gallons of water	7 - 14 days

# PRODUCTS

# STRENGTH™ 1-0-0

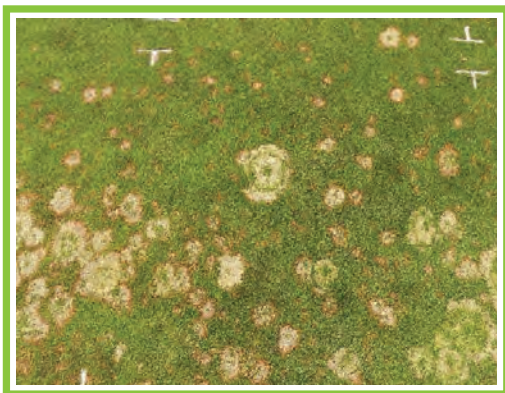


## RESEARCH

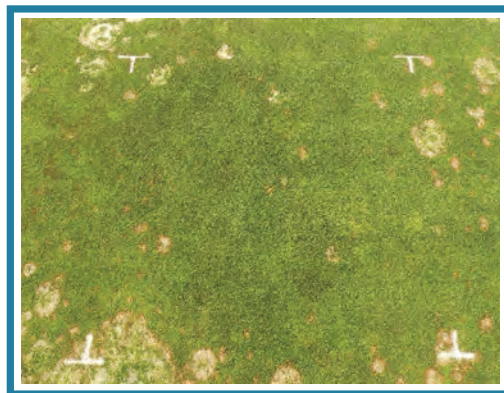


A study conducted at Oregon State University in [2024] evaluated the effects of Strength on turf performance. Results indicated that turf treated with Strength exhibited enhanced cellular structure and resilience under environmental stress. The ingredients in Strength support the development of strong, resilient cell walls, which contribute to overall turf vigor. Trial results showed that treated turf maintained optimal visual quality and plant integrity compared to untreated turf. Strength similarly enhances the plant's fitness level.

### UNTREATED CONTROL

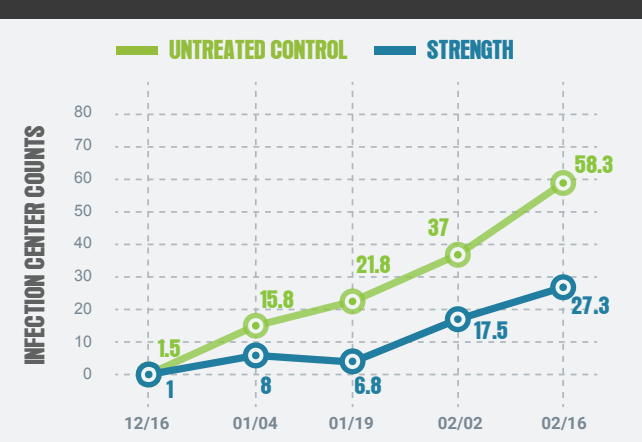


### STRENGTH

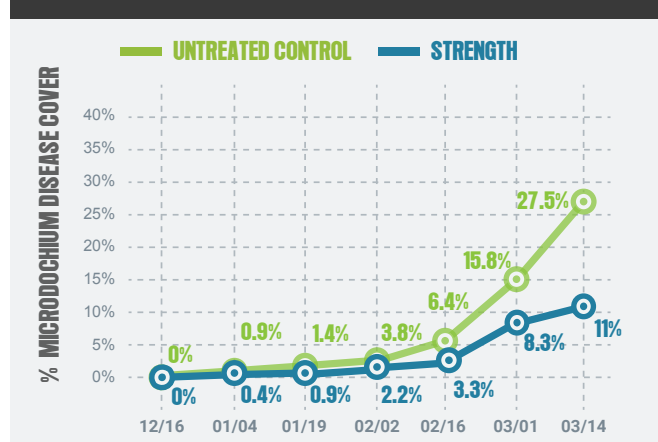


Strength applied at 4 fl. oz. / 1,000 ft<sup>2</sup> every 14 days.

### INFECTION CENTER COUNTS



### PERCENT MICRODOCHMIUM DISEASE COVER



\*Strength is not a fungicide. \*No fungicidal claims are being made regarding Strength.