



Property Description

Join Kroger, Dollar Tree, Dairy Queen, AT&T and many others at Brownstown Center at the southeast corner of Telegraph and West Roads. The center has curb-cuts from both Telegraph and West, ample parking and monument signage. There is easy access from I-75, just 1 mile to the east.

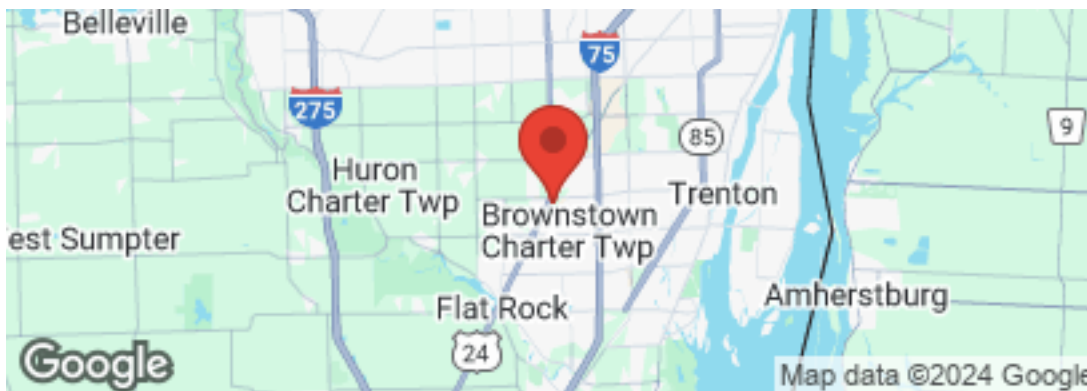
Summary

Available Size: 1,440 & 1,600 SF
Inline

Lease Rate: Contact Agent

NNN Est.: \$7.07 PSF

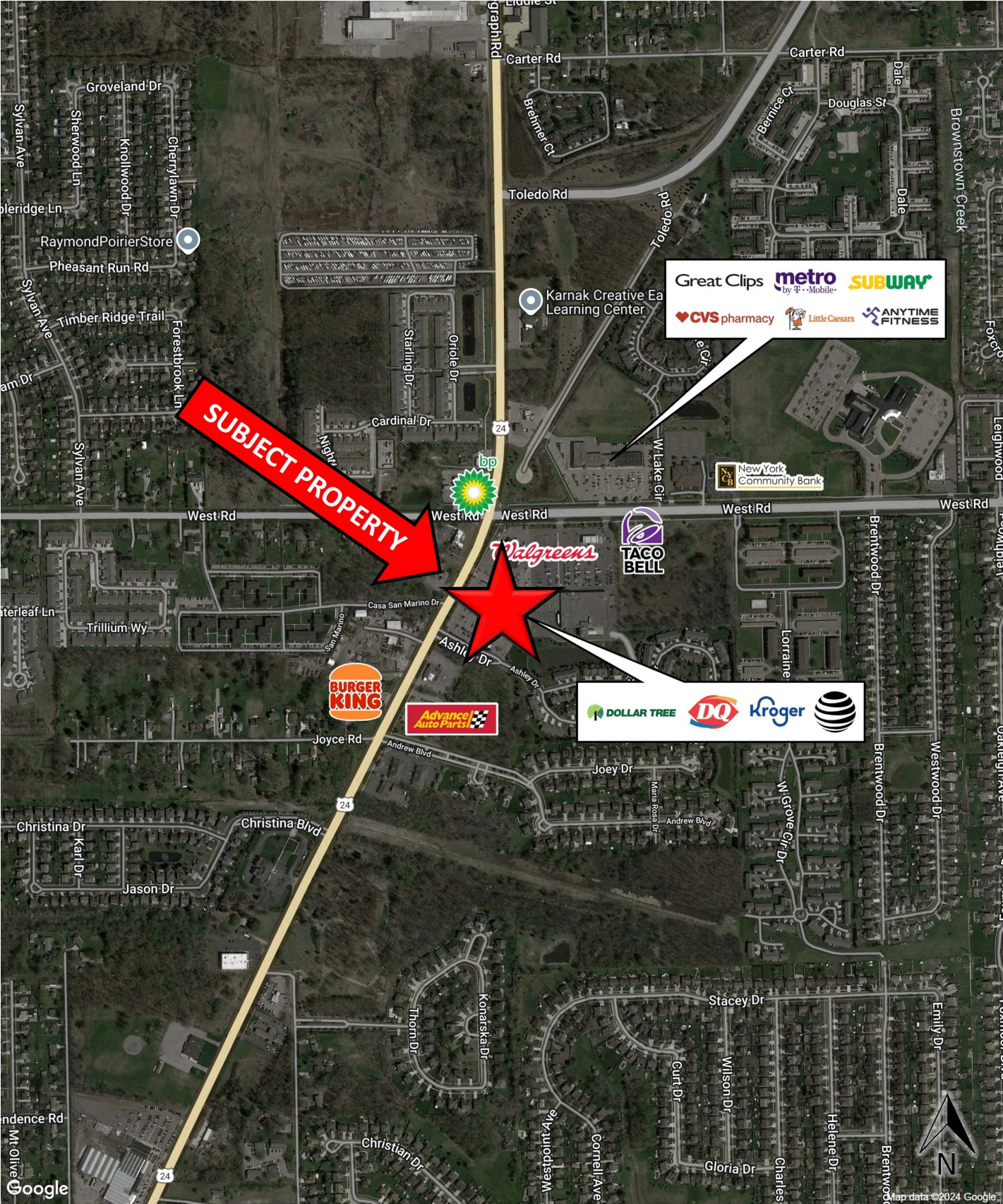
Zoning: TC; Town Center

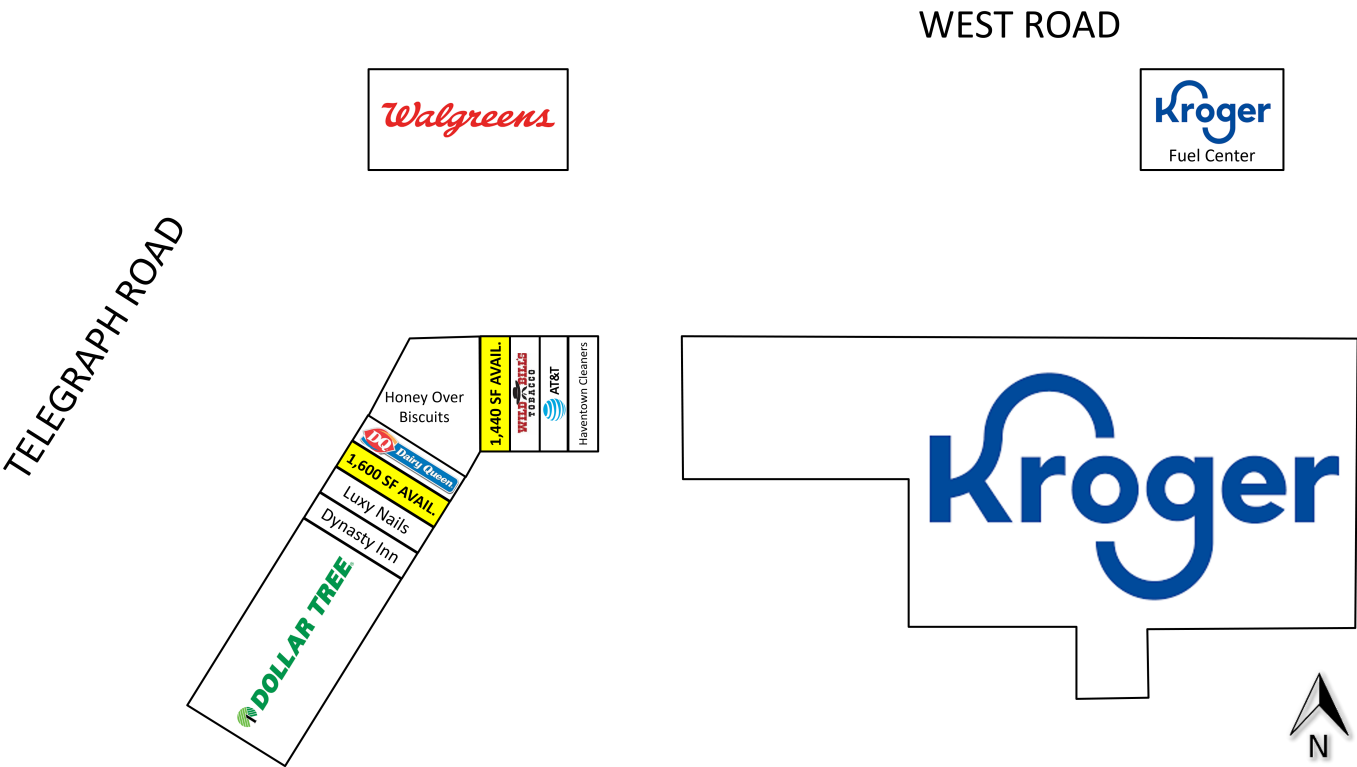


Gerdom Realty & Investment | www.GerdomRealty.com
248-242-6766 | 640 Griswold Street, Suite 100, Northville, MI 48167

MICHAEL MURPHY
mmurphy@gerdomrealty.com

JACK MELTON
jmelton@gerdomrealty.com







23115 Telegraph Rd Brownstown Charter Twp, MI 48183	1 mi radius	3 mi radius	5 mi radius
Population			
2024 Estimated Population	10,921	46,524	116,963
2029 Projected Population	10,620	45,261	113,982
2020 Census Population	12,439	50,611	125,474
2010 Census Population	11,818	47,728	120,542
Projected Annual Growth 2024 to 2029	-0.6%	-0.5%	-0.5%
Historical Annual Growth 2010 to 2024	-0.5%	-0.2%	-0.2%
2024 Median Age	40.0	41.6	41.8
Households			
2024 Estimated Households	4,424	19,298	49,008
2029 Projected Households	4,323	18,848	47,968
2020 Census Households	4,657	20,063	50,577
2010 Census Households	4,468	18,438	47,314
Projected Annual Growth 2024 to 2029	-0.5%	-0.5%	-0.4%
Historical Annual Growth 2010 to 2024	-	0.3%	0.3%
Race and Ethnicity			
2024 Estimated White	75.2%	76.6%	76.1%
2024 Estimated Black or African American	11.6%	11.6%	13.4%
2024 Estimated Asian or Pacific Islander	5.6%	4.6%	3.4%
2024 Estimated American Indian or Native Alaskan	0.2%	0.3%	0.3%
2024 Estimated Other Races	7.4%	6.9%	6.9%
2024 Estimated Hispanic	7.9%	7.0%	6.7%
Income			
2024 Estimated Average Household Income	\$114,054	\$102,488	\$100,713
2024 Estimated Median Household Income	\$89,370	\$80,142	\$78,062
2024 Estimated Per Capita Income	\$46,209	\$42,567	\$42,304
Education (Age 25+)			
2024 Estimated Elementary (Grade Level 0 to 8)	3.0%	2.2%	2.2%
2024 Estimated Some High School (Grade Level 9 to 11)	3.8%	5.2%	5.8%
2024 Estimated High School Graduate	27.6%	31.4%	31.9%
2024 Estimated Some College	22.0%	23.2%	24.2%
2024 Estimated Associates Degree Only	12.2%	11.5%	9.7%
2024 Estimated Bachelors Degree Only	20.9%	16.8%	16.6%
2024 Estimated Graduate Degree	10.5%	9.7%	9.7%
Business			
2024 Estimated Total Businesses	202	1,247	2,959
2024 Estimated Total Employees	1,081	15,016	32,203
2024 Estimated Employee Population per Business	5.3	12.0	10.9
2024 Estimated Residential Population per Business	54.0	37.3	39.5

