

QJB Submersible Mixer

Product Introduction :

QJB Submersible agitator is used for municipal sewage treatment plant and industrial wastewater treatment plant to produce low tangential flow with force, also can be used for create a flow for circulation, nitrification, denitrification and phosphorus removing.



Submersible Mixer



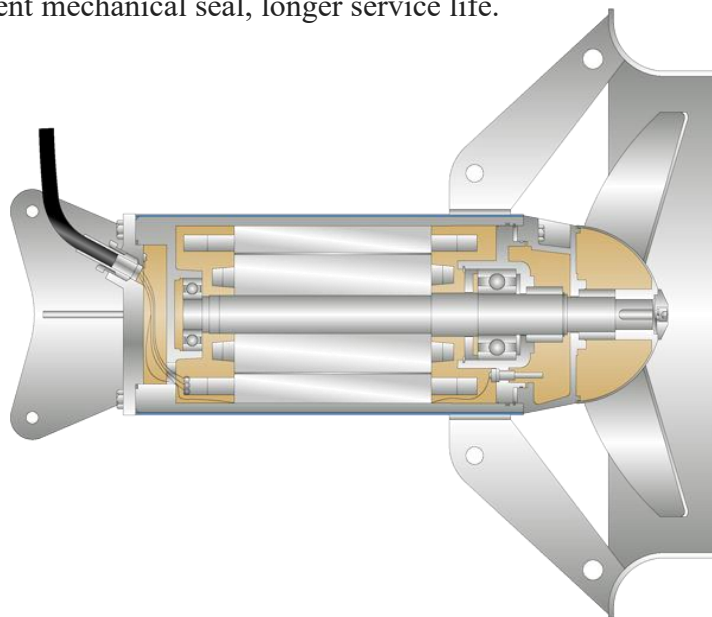
Submersible Mixer
(with Dome)



Submersible Mixer
(Low Speed)

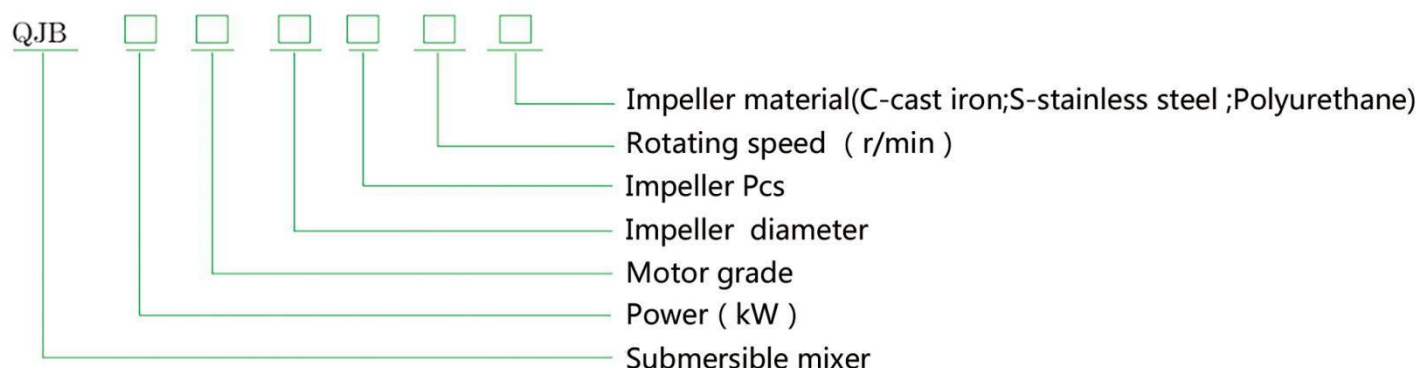
Features:

- Compact structure, light weight, easy to operate and maintenance, simple installation, long lift span;
- Self-cleaning blade, preventing debris from twining or blocking;
- Used together with aerator lowers energy consumption , high aeration rate , preventing sedimentation;
- Class F insulation of motor winding, motor protection grade IP68, imported permanent -lubricated maintenance-free bearings, chamber leakage detection, motor winding overheating protection;
- Two rows of independent mechanical seal, longer service life.



Technical Parameters

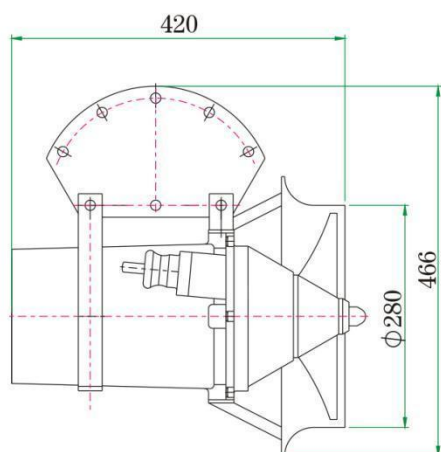
Model Interpretation



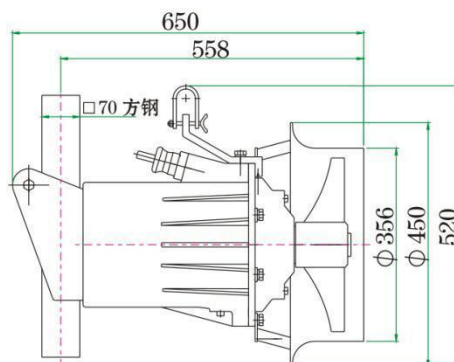
PARAMETER

Model		Power	Current	Impeller Diameter	Rotating Speed	Weight	Force
		(kW)	(A)	(mm)	(r/min)	(kg)	(N)
High speed Mixer	QJB0.37/6-220/3-960/C/S	0.37	1.3	220	960	45	138
	QJB0.55/4-220/3-1480/C/S	0.55	1.6	220	1480	45	145
	QJB0.85/8-260/3-740/C/S	0.85	4	260	740	55	180
	QJB1.5/6-260/3-960/C/S	1.5	4	260	960	55	260
	QJB2.2/8-320/3-740/C/S	2.2	8	320	740	110	580
	QJB4/6-320/3-960/C/S	4	12	320	960	115	690
	QJB1.5/8-400/3-740/S	1.5	5.8	400	740	100	600
	QJB2.5/8-400/3-740/S	2.5	9	400	740	100	800
	QJB3/8-400/3-740/S	3	11	400	740	100	920
	QJB4/6-400/3-960/S	4	12	400	960	100	1200
	QJB4/12-620/3-480/S	4	14.2	620	480	184	1400
	QJB5/12-620/3-480/S	5	18.2	620	480	184	1800
	QJB7.5/12-620/3-480/S	7.5	28	620	480	229	2600
	QJB10/12-620/3-480/S	10	32	620	480	229	3300
Low Speed plug-flow	QJB15/12-620/3-480/S	15	43	620	480	260	4000
	QJB18.5/12-620/3-480/S	18.5	51	620	480	276	4400
	QJB22/12-620/3-480/S	22	60	620	480	290	5300
	QJB1.5/4-1100/2-65/P	1.5	4	1100	65	135	1100
	QJB2.2/4-1100/2-96/P	2.2	6	1100	96	135	1970
	QJB3/4-1100/2-115/P	3	8	1100	115	135	2410
	QJB4/4-1100/2-135/P	4	9	1100	135	135	2930
	QJB1.5/4-1400/2-55/P	1.5	4	1400	55	135	1200
	QJB2.2/4-1400/2-63/P	2.2	6	1400	63	135	1640
	QJB3/4-1400/2-87/P	3	8	1400	87	135	2180
	QJB4/4-1400/2-115/P	4	9	1400	115	135	2430
	QJB1.5/4-1600/2-48/P	1.5	4	1600	48	135	1320
	QJB2.2/4-1600/2-56/P	2.2	6	1600	56	135	1850
	QJB3/4-1600/2-65/P	3	8	1600	65	135	2140
	QJB4/4-1600/2-87/P	4	9	1600	87	135	2520
	QJB1.5/4-1800/2-42/P	1.5	4	1800	42	158	1480
	QJB2.2/4-1800/2-50/P	2.2	6	1800	50	162	1880
	QJB3/4-1800/2-56/P	3	8	1800	56	162	2360
	QJB4/4-1800/2-65/P	4	9	1800	65	165	2750
	QJB1.5/4-2200/2-38/P	1.5	4	2200	38	158	1400
	QJB2.2/4-2200/2-42/P	2.2	6	2200	42	162	1810
	QJB3/4-2200/2-48/P	3	8	2200	48	162	2140
QJB4/4-2200/2-56/P	4	9	2200	56	165	2780	
QJB5/4-2200/2-65/P	5	13	2200	65	180	2960	
QJB1.5/4-2500/2-36/P	1.5	4	2500	36	170	1430	
QJB3/4-2500/2-38/P	3	8	2500	38	175	2090	
QJB4/4-2500/2-42/P	4	9	2500	42	185	2850	
QJB5/4-2500/2-56/P	5	13	2500	56	205	3090	
QJB7.5/4-2500/2-65/P	7.5	17	2500	65	210	3980	

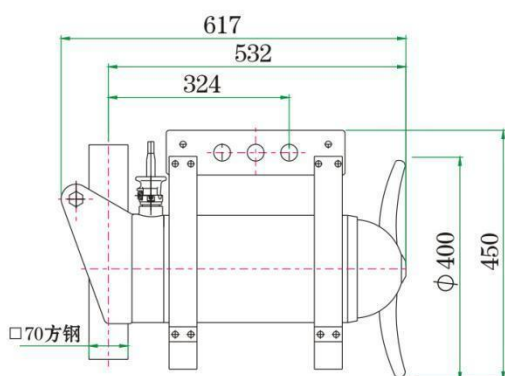
Dimensions



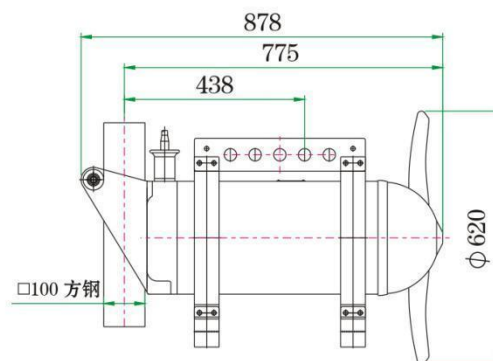
QJB0.85/8-260/3-740/C/S
QJB1.5/6-260/3-960/C/S



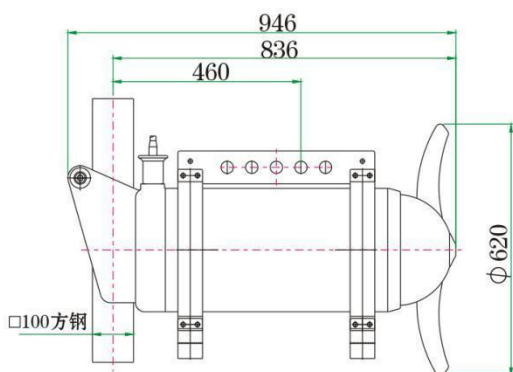
QJB2.2/8-320/3-740/C/S
QJB4/6-320/3-960/C/S



QJB1.5/8-400/3-740/S
QJB2.5/8-400/3-740/S
QJB3/8-400/3-740/S
QJB4/6-400/3-960/S



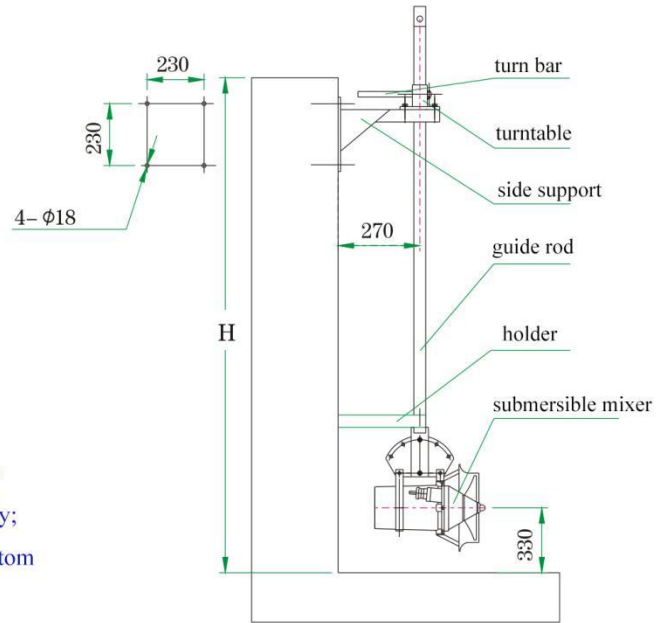
QJB4/12-620/3-480/S
QJB5/12-620/3-480/S



QJB7.5/12-620/3-480/S
QJB10/12-620/3-480/S

Installation

Installation System I -1

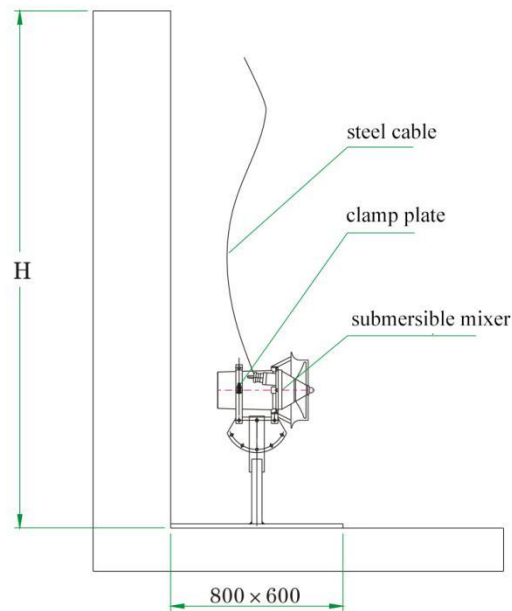


Note:

1. Tank depth <math>< 3\text{M}</math>;
2. The guide rod length 3 meters;
3. The direction and height can be adjusted horizontally and vertically;
4. Fixed to side wall and tank bottom with expansion bolts.

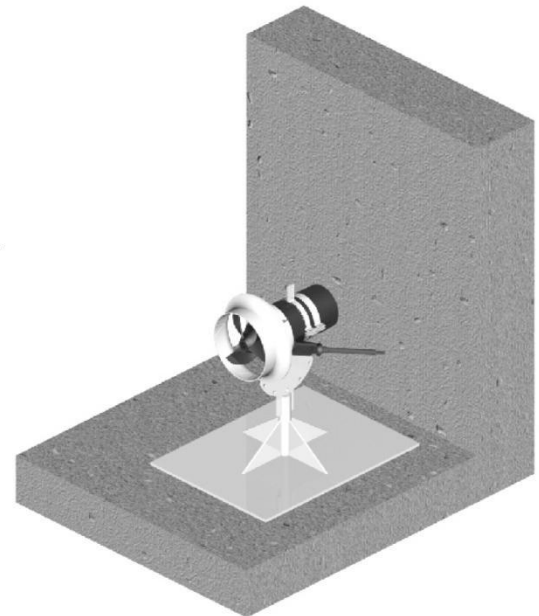


Installation System I -2

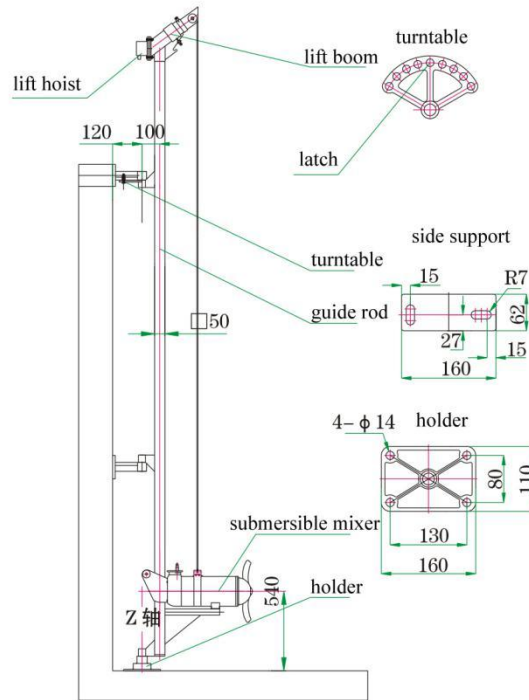


Note:

1. Tank depth >math>> 3\text{M}</math>;
2. Fixed to side wall and tank bottom with expansion bolts.
3. The direction can be adjusted horizontally .

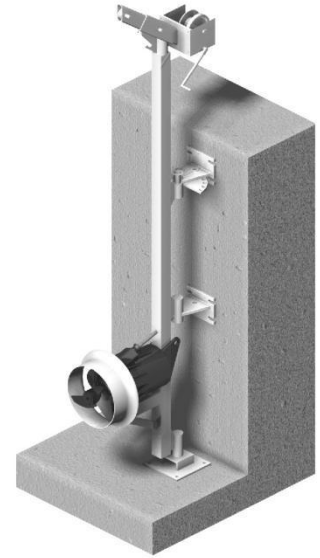


Installation System II

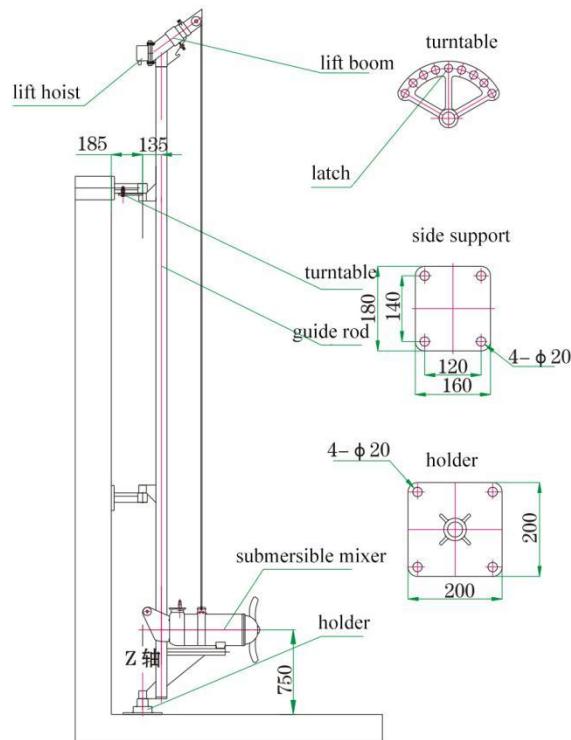


Note:

1. The turntable latch rotates around the Z axis in the horizontal direction
2. When guide rod length > 5 meters, need an extra side support.
3. Fixed to side wall and tank bottom with expansion bolts.

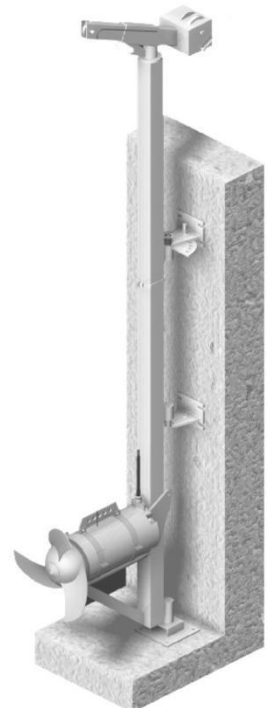


Installation System III

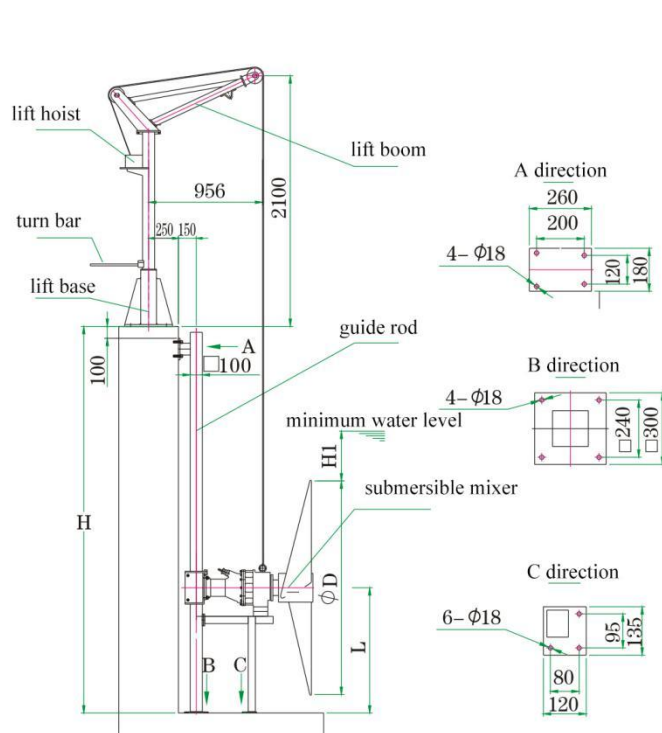


Note:

1. The turntable latch rotates around the Z axis in the horizontal direction
2. When guide rod length > 5 meters, need an extra side support.
3. Fixed to side wall and tank bottom with expansion bolts.

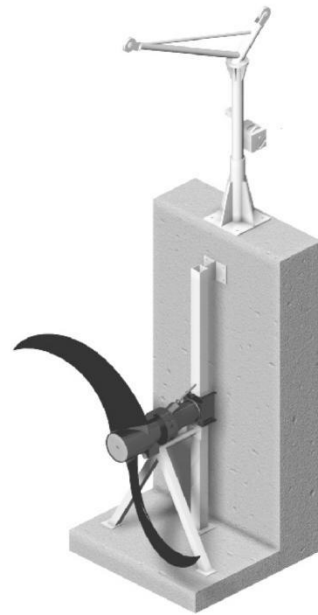


Installation System IV



Note:

1. Fixed to side wall and tank bottom with expansion bolts.



Φ D	L	H1
Φ 1100	700	1000
Φ 1400	850	900
Φ 1600	950	900
Φ 1800	1050	800
Φ 2200	1250	800
Φ 2500	1400	800

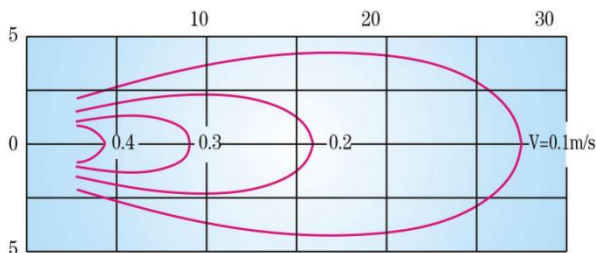
Working Conditions

- Liquid temperature: $\leq 40^{\circ}\text{C}$
- PH:5~9
- Liquid density: $\leq 1150\text{kg/m}^3$
- Max working depth: 20m
- Motor : IP 68 , 7/24 Continuous working
- Motor MUST diving in water while operating

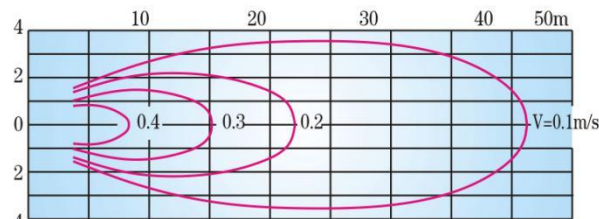
Flow pattern

Submersible Mixer

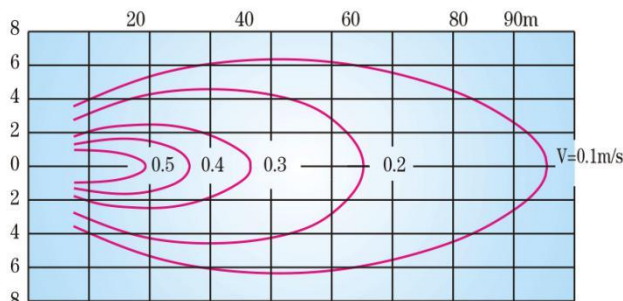
The velocity field is the boundary water velocity $V=0.1\text{m/s}$ in clear water



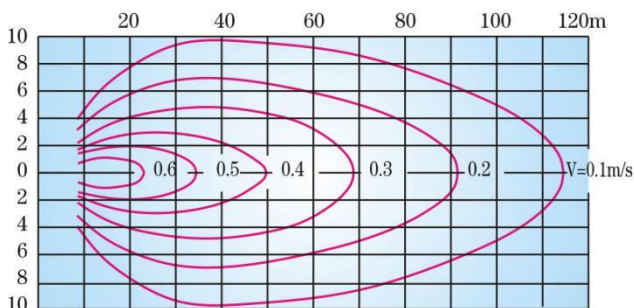
QJB0.85/8-260/3-740/C/S , QJB1.5/6-260/3-960/C/S
QJB1.5/8-400/3-740/S



QJB2.2/8-320/3-740/C/S , QJB4/6-320/3-960/C/S
QJB2.5/8-400/3-740/S , QJB4/6-400/3-960/S
QJB3/8-400/3-740/S

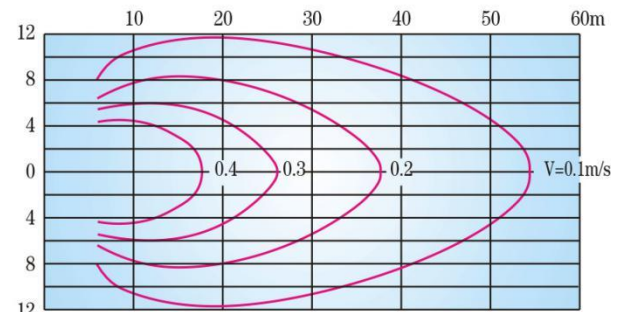


QJB4/12-620/3-480/S , QJB5/12-620/3-480/S

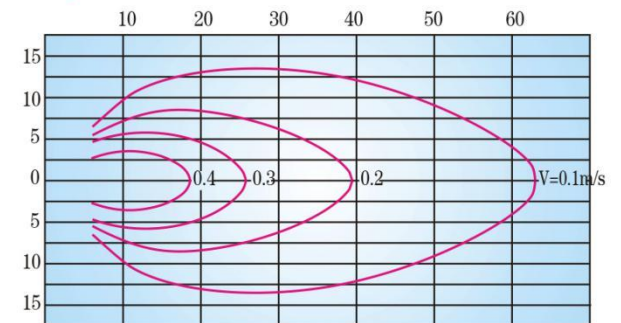


QJB7.5/12-620/3-480/S , QJB10/12-620/3-480/S

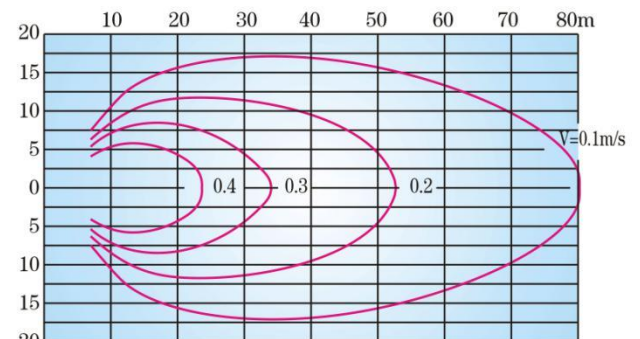
Low Speed Mixer



QJB1.5/4-1100/2-65/P , QJB2.2/4-1100/2-96/P ,
QJB3/4-1100/2-115/P , QJB4/4-1100/2-135/P ,
QJB1.5/4-1400/2-55P , QJB3/4-1100/2-115/P
QJB3/4-1400/2-87/P



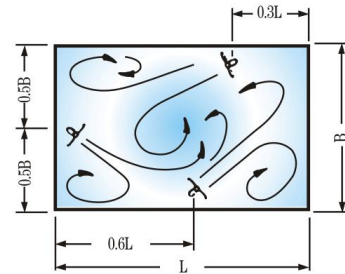
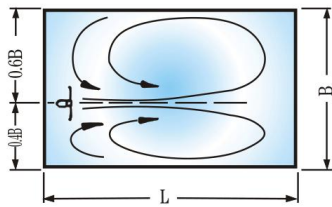
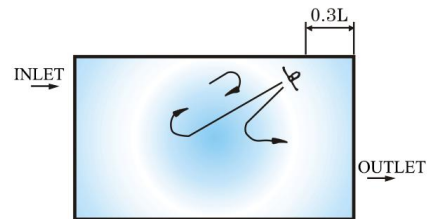
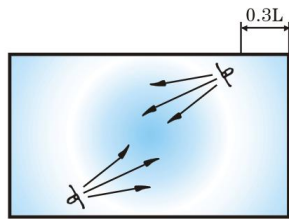
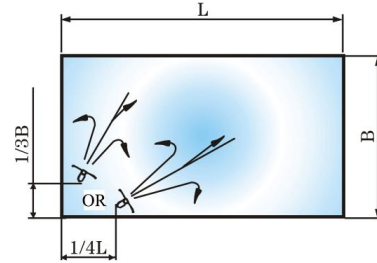
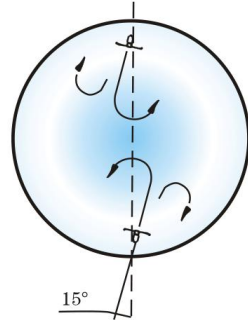
QJB1.5/4-1600/2-48/P , QJB2.2/4-1600/2-56/P ,
QJB3/4-1600/2-65/P , QJB1.5/4-1800/2-42/P ,
QJB2.2/4-1800/2-50/P , QJB3/4-1800/2-56/P ,
QJB1.5/4-2200/2-38/P , QJB2.2/4-2200/2-42/P ,
QJB3/4-2200/2-48/P , QJB1.5/4-2500/2-36/P ,
QJB3/4-2500/2-38/P



QJB4/4-1600/2-87/P , QJB4/4-1800/2-65/P ,
QJB4/4-2200/2-56/P , QJB4/4-2500/2-42/P ,
QJB5/4-2200/2-65/P , QJB5/4-2500/2-56/P ,
QJB7.5/4-2500/2-65/P

Recommended Location

High speed mixer



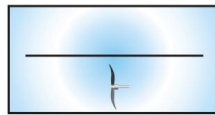
$B < 5$ times the diameter of the impeller

3 mixers in one tank

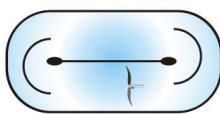
Low speed mixer



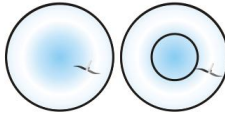
square



rectangle

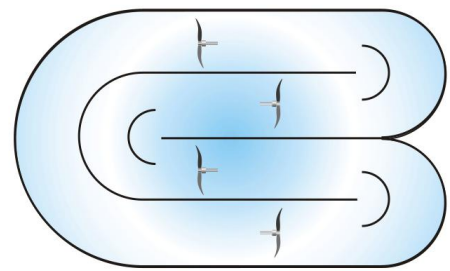


track type



round

ring



S-curve

Packing & Shipping

Main motor & propeller packed in wooden box.

Installation guide rod & lift system packed with plastic cloth.



On-site case



