

A.D.A. COMPLIANCY

Standards must be met by March 15, 2012

"All ATMs must comply with the 2010 ADA Standards for new construction and alterations". -Diebold

What Is Required?

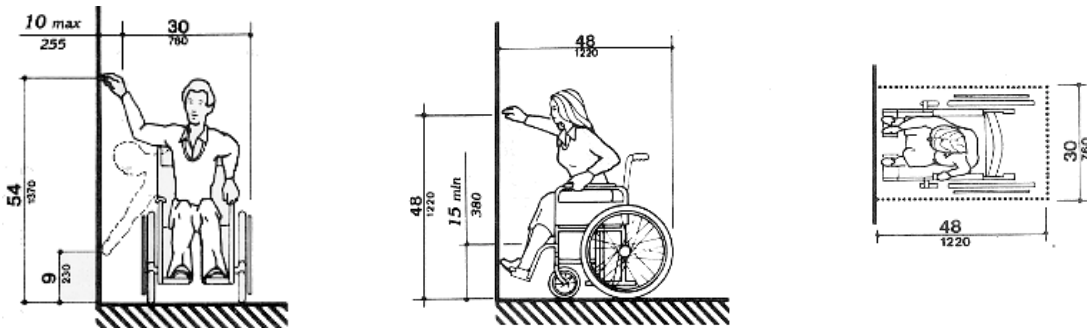
- Controls for the ATM needs to be within reach ranges, meaning no higher than 48" and no lower than 15" (shown below)
- Speech Mode (ex. headphone jack)
- Numeric Keypad
- Display must be visible 40" above floor
- Braille instructions to begin "Speech Mode"
- Floor Space as shown in diagrams below

- www.ATMmarketplace.com

Which ATMs are Compliant?

- Hyosung (All models)
- Hantle (All models)
- NCR (All models)
- Tidel (3100, 3300, 3400, 3600, 3700)
- WRG (CPU versions 4.8 and higher with working headphone jack)
- Triton (RL1600, RL2000, RL5000, RT200, FT5000, FT7000)

*ATMs Listed may still need Braille instructions



For more information on the new 2010 Americans with Disabilities Act you can go to www.ATMmarketplace.com/blog/5868 or www.ada.gov/2010ADASTandards_index.htm

Need a Compliant ATM?

Stewart Business Systems will give you a brand new compliant ATM at our Distributor Price and top trade in on your old machine.