



Application for Membership
IZAAK WALTON LEAGUE OF AMERICA
York Chapter #67

7131 IRON STONE HILL RD
DALLASTOWN PA, 17313

Application Type: ☐ **Individual Membership** (\$110 per year plus \$75 initiation fee = \$185)
☐ **Spousal Membership** (\$167.50 per year plus \$75 initiation fee = \$242.50)

Primary Member's Full Legal Name

First Middle Last (Nickname in parenthesis): _____

Street Address: _____

City: _____ State: _____ Zip Code: _____

Phone Number: _____ Date of Birth: _____

Personal Email Address (no work or school address): _____

Have you ever been convicted of a crime? Yes ☐ No ☐ If "Yes", please elaborate below.

In a few words, please tell us your reason for joining:

Your signature below gives us permission to conduct a required background investigation.

Primary Member's Signature: _____

APPLICANTS, PLEASE READ BUT DO NOT FILL IN THE AREA BELOW

You must attend a Chapter Work Detail (see the calendar on our website for details)

Please arrive 10 minutes prior to the published start time to check in with the person in charge.

If you arrive late, you will be asked to come back on another day.

Have the person in charge sign this form below at the conclusion of the work detail.

Work Detail Date: _____ Signed by: _____

You must attend a Chapter Orientation (see the calendar on our website for details)

Please bring a printed copy of the Orientation Handout (at the end of this application).

Please note the orientation includes a walking tour, please dress appropriately for the weather.

Have the person in charge sign this form below at the conclusion of the orientation.

Orientation Date: _____ Signed by: _____

You must submit this application along with payment after completion of a Work Detail and Orientation.

You may submit the application and payment in person, or mail to the Chapter address above.

Amount accepted: _____ Received by: _____

You must attend a Membership Meeting to be approved by the general membership and pick up your cards.

Meetings are held the third Tuesday of every month at 7:00PM.

Background Check Results: _____ Date: _____

Board Approval Date: _____ Membership Approval Date: _____

THIS PAGE REQUIRED FOR SPOUSAL MEMBERSHIP ONLY

Primary Member's Name *(from page 1)*

First Middle Last: _____

Spouse's Full Legal Name (if applying for Spousal Membership)

First Middle Last (Nickname in parenthesis): _____

Phone Number: _____ Date of Birth: _____

Personal Email Address (no work or school address): _____

Have you ever been convicted of a crime? Yes ☐ No ☐ If "Yes", please elaborate below.

In a few words, please tell us your reason for joining:

Your signature below gives us permission to conduct a required background investigation.

Spouse's Signature: _____

APPLICANTS, PLEASE READ BUT DO NOT FILL IN THE AREA BELOW

You must attend a Chapter Work Detail *(see the calendar on our website for details)*

Please arrive 10 minutes prior to the published start time to check in with the person in charge.

If you arrive late, you will be asked to come back on another day.

Have the person in charge sign this form below at the conclusion of the work detail.

Work Detail Date: _____ Signed by: _____

You must attend a Chapter Orientation *(see the calendar on our website for details)*

Please bring a printed copy of the Orientation Handout (at the end of this application).

Please note the orientation includes a walking tour, please dress appropriately for the weather.

Have the person in charge sign this form below at the conclusion of the orientation.

Orientation Date: _____ Signed by: _____

You must submit this application along with payment after completion of a Work Detail and Orientation.

You may submit the application and payment in person, or mail to the Chapter address above.

Amount accepted: _____ Received by: _____

You must attend a Membership Meeting to be approved by the general membership and pick up your cards.

Meetings are held the third Tuesday of every month at 7:00PM.

Background Check Results: _____ Date: _____

Board Approval Date: _____ Membership Approval Date: _____

FREQUENTLY ASKED QUESTIONS

Where should I park for Orientations and Work Details?

Park in the Upper Parking lot next to the Clubhouse. The entrance to the Upper Parking Lot is just South of the Caretaker's House. Orientations and most Work Details will begin at the Clubhouse. Work Details for the Trout Program will begin near the Fish House by the creek.
DO NOT PARK IN FRONT OF OUR GATE!

Do I automatically become a member of Izaak Walton League of America when I join?

Yes. Half of your annual dues goes to the Izaak Walton League national organization.

Why should I consider Spousal Membership?

Minor children who wish to use club grounds must be accompanied by a legal guardian and Spousal Membership allows either parent/guardian to do that. Spousal Membership essentially doubles the number of adult guests you can bring to the club (maximum of 3 adult guests on any shooting range, or 6 adult guests elsewhere on club grounds per adult member).

What if I arrive late to an Orientation or Work Detail?

We do not have a hard and fast rule, and we leave this up to the discretion of the person in charge of the scheduled event. In general, if you are a few minutes late, but are otherwise early enough to sign in before the event starts that's probably acceptable; however, if you arrive after sign-in has closed, or the work party has left the upper parking lot / clubhouse area, you will be asked to come back another time.

What if I am physically unable to perform manual labor?

We will try to accommodate your needs and find something that you can do.

Can I pay with Cash?

We greatly prefer that you do NOT pay with cash. Personal checks or money orders are preferred. If you must pay using cash, we ask that you have the exact amount. We are not a retail establishment, and do not have the ability to make change.

Can I pay with a Credit Card?

No. We do not accept credit cards or other forms of electronic payment at this time.

What if my schedule conflicts with Orientations, Work Details or Membership Meetings?

Contact us at info@yorkiwa.org and we will try to make special arrangements, such as attending an alternate chapter function.

What if I don't pass the background check? Is my payment refundable?

Generally, we will not cash your check until you have passed the background check and have been approved by the Board of Directors.

What sort of thing on my record will prevent me from joining?

In general, we are looking for violations that prohibit you from owning firearms (which includes felonies, or misdemeanors with a possible sentence of 1 year or greater), or things that would violate PA Act 153 preventing someone from interacting with children.

What if I still have questions?

Ask us at the Orientation or contact us at info@yorkiwa.org.

ORIENTATION HANDOUT



Izaak Walton League of America York Chapter #67

7131 Iron Stone Hill Road
Dallastown, PA 17313

REVISED: 06/23/2024

Application Process:

Each applicant, including both members in a spousal membership, must attend an orientation and a work detail, in either order before submitting application and payment. Please hold your paperwork until both items are completed.

Please use full names (not nick names) including any suffixes, on your applications.

Please use personal emails for newsletters and contact, not employer or school. These often flag us as junk mail or do not get updated when you move on.

You **MUST** have your application signed at both events to prove attendance, otherwise your application will not be accepted. We do not keep attendance; the responsibility to get these signatures belongs to the applicant.

Please see the yorkiwl.org website for dates and times of all events.

Once submitted, your application goes through a PSP background check, before going to the board for approval, and then the open body, both at the next scheduled meetings.

Once approved, you will be issued a membership card and gate access card at that membership meeting, you must be present to receive your cards, unless you make prior arrangements.

Background check:

We conduct a PASP background check on all perspective applicants. We are primarily looking for things that will prevent an applicant from possessing a firearm or mentoring children, as these are significant efforts within our organization. We generally do not care if you had a single DUI 10 years ago.

Please be honest on your application, getting caught in a lie is cause for immediate rejection.

Purpose:

The Izaak Walton is a conservation organization. We believe we are stewards of the land, air, and water and are responsible for the wise use, and protection of it. We promote enjoyment of the outdoors and all it has to offer. This is different than an environmental organization believing in the blanket no use preservation of the environment. For example, IWLA is in favor of fracking, IF done responsibly (it is not in many cases).

We got our start in 1922 as the York Angler's Association and joined the Izaak Walton League in 1926. We purchased the initial 40-ish acres of grounds here in 1938 and have added to the property over for a total of about 80 acres.

Organization:

The IWLA is a national organization, we are but one of about 45 chapters scattered through the east and Midwest parts of the country.

There are 3 levels, National; State and Chapter. With almost 1400 members, we are the 3rd largest chapter in the country, and the largest in the State of Pa.

Membership:

Open to adults 18 years or older. There is a spousal membership where a husband and wife can both join at a discount.

Members are allowed up to 6 guests on the grounds, but only allowed 3 guests per member on the ranges. All guests must be directly with the members. All members are responsible for their guest's behavior.

Dues are for the current calendar year. No matter what month you join your membership expires at the end of the calendar year.

On December 31st your gate card to enter the grounds will expire. If you haven't renewed by then you will not be allowed access and you will incur a late fee. If you haven't received a renewal notice by the end of November, be sure to contact us at info@yorkiwl.org.

Your dues go to support local and national efforts alike. Of the annual \$110, currently \$55 stays with the local chapter, \$50 goes to the National organization, and \$5 goes to the State level organization primarily for operating and advocacy funding in national and state level issues.

Your member privileges do not start until you receive a membership card and gate access card. Members must display their membership card on an outer garment or shooting gear when anywhere on club property.

We do not offer family memberships. Kids are considered an extension of the member and are generally not counted as guests.

Member responsibility:

It is your responsibility to notice nonmembers on the grounds.

It is your choice on how to handle this, based on your comfort level. **NEVER** do something you are not comfortable with or that will put you in danger.

- Make sure you have your membership card on you and in view.
- Approach the person in question and ask for a membership card. If they cannot produce one, ask them nicely to leave. All members must display a membership card, this is made known to all members, new and old at renewal.
 - If they do not leave, see below.
 - Avoid confrontation.
- Note the nonmember, and if possible, a vehicle tag number, and report to info@yorkiwl.org
- Note the nonmember, and if they are acting dangerously or desecrating the grounds, feel free to dial 911. The PA State Police are right up the hill, and a description of “a trespasser is on our firing ranges using firearms” gets their attention. Our gate automatically opens to Emergency Services.

Meetings:

The general membership meeting is held the 3rd Tuesday of each month at 7:00pm and is open to the public. The Directors meeting is generally the 1st Tuesday of the month at 7:00pm and is open

to all members and anyone with business for the club to discuss. Only officers and board members may make motions and vote.

Weather policy:

We follow Dallastown school district for activity cancellations.

Newsletter:

Our newsletter is available by email and on our website www.yorkiwl.org. Members should receive the newsletter monthly and should read it to be informed of the events taking place at our club and use it to get involved. If you are not receiving it, please email info@yorkiwl.org.

Website:

www.yorkiwl.org for club info, contacts, committee pages, events calendar and environmental issues.

Building and Grounds:

This committee is responsible for maintaining the club equipment, buildings, and grounds. They should be notified of any problems, and they are always looking for help. Periodically they run work details, see the website for the schedule. Certain designated areas of the club may be closed during work details for the safety of the members.

Clubhouse and Grounds rental:

Members may rent the clubhouse, kitchen, and pavilions or most any area of the grounds for exclusive use gatherings for a fee. They must fill out a “Use of Grounds” form and submit it and payment to the Board at least one month, but not more than 6 months prior to the event. Use of facilities is subject to availability and is by order of request. Forms are available on groundskeeper’s porch and on our website.

Juniors:

The Juniors are Izaak Walton #67’s youth group. The juniors have their own committee with activities and meetings for those 8 to 18. There are applications for the Juniors in the clubhouse and on our website.

Juniors do not have to be related to a current member, but their use of the club grounds is only for their scheduled events. Otherwise, juniors must be accompanied by an adult member. Juniors do not have the same privileges as adult members.

Firearms Education:

The firearms education committee generally runs a Hunter and Trapper Education each August. Please register for this class at the PA Game Commission website.

We do various shooting sports instructional classes (rifle, action shooting, trap) and events (like medical trauma seminars) sporadically, based on interest. Please email info@yorkiwa.org if you are interested in a subject.

General Ground Rules:

- No alcohol or illicit drugs are allowed on club grounds.
- Alcohol is allowed in the clubhouse only, and only at Board sanctioned events
- Everyone must be off club grounds by dark except for scheduled activities and camping.
- No ATVs are to be ridden on club grounds.
- No bicycles may be ridden on hiking paths.
- No hunting on club grounds.
- Littering will not be tolerated.
- Turn off all lights when not in use, regardless of who turned them on.
- The speed limit on club grounds is 10mph due to children/dogs at play, potholes, and dust.
- "Open carry" of firearms on the club grounds is prohibited unless authorized by the Board.

Bees:

The juniors are raising honeybees near the clubhouse upper parking lot. These bees are not aggressive, but do not get too close to the hives or harm them. The juniors sell the honey at the meetings after it is harvested each fall.

Scouting Support:

We support as many Eagle Scout projects as we can, several examples are the American Chestnut

plantings, Archery range improvements and camping area improvements.

Archery:

We have 2 archery ranges for member use; a static range with 3 static backers and a walking trail with 15 bag targets at various elevations, including a platform. Both are located near the clubhouse. Logbooks give us an idea of all range use for maintenance and somewhere to start if there is an incident, or gear left behind.

Pheasants:

The club raises quail and pheasants to release on the club grounds. They are hatched from eggs and released at about 5-6 weeks old throughout the late spring and summer.

Dog Training:

The entire club grounds are considered a dog training/exercise area. While leashes are currently not required, your animal must be under command control.

Playground and picnic area:

These areas are for member use as available and may be reserved/rented.

Fish Distribution:

We are a Pa Trout Co-Op. The nursery and dam were built in the 1970's in conjunction with York IWL, York Water Company and the PA Fish and Game commission (now Fish and Boat).

Each year we raise 10,000-12,000 trout in coordination with the Fish and Boat Commission and other local clubs for release into the South branch Codorus (Seven Valleys to Glen Rock), East Branch Codorus (here to Spring Valley Park), Muddy Run Felton, the Felton Kids Fishing Derby, York City Kawanis Lake for their Kids Fishing Derby, and any other fishing derby we can find. The fish commission provides the fingerlings, and we care for and feed them every day at a cost of about \$3000/year.

The trout group puts on an annual Kids Fishing Derby and Mothers n Kids Day on Mother's Day

weekend each year, attracting about 200 kids. The stream is heavily stocked and closed to the public by permit which is enforced by local Game Commission Police. Caught fish are processed, and prizes are given.

Fishing in the stream:

Fishing is allowed by the public per PA Fish and Boat Commission regulations. All fisherfolk in the stream must possess a valid fishing license and trout stamp. The public is allowed to fish the stream, but not allowed to park on the grounds, they must walk in from the road.

Camping:

Camping is allowed in the camping area only. There is limited power, and no water or sewage hookup. You must request and receive permission ahead of time to camp (via use of grounds form). Scouts use this area several times a year for weekend events.

Hiking trails:

The hiking trails are for foot traffic only. They run along the base of the hill, and several unimproved trails within it.

Club Pond (Lake Tonian):

Only members and their immediate family members may fish in Lake Tonian, and all anglers 16 years and over must possess a valid fishing license. Only one rod per person may be used, and no live bait may be used by adults. Lake Tonian is open all year. Do not place any fish in the lake.

The pond is currently under strict management for the health of the Bluegill and Bass populations, please adhere to the creel limits attached to this orientation. Watch the website for changes to the creel limits.

There is no boating on the lake. The liability to the club is just too great.

Trap fields:

The trap group runs public trap shoots on Monday nights from approximately the spring time change to the fall time change from 6pm to

about 9pm. They have 3 voice activated throwers, 2 standard trap and 1 wobble trap.

These throwers are not available for member use.

They are dangerous to operate, throwing targets at 45mph, and the mechanisms can cause grave injury. Only trap committee members who are properly trained have access to the automatic throwers. These are used on Monday night trap and during Board approved special events. If you wish to hold a special private event using these throwers, please contact the board via a use of grounds request, and we will supply staff for your event, if available.

The fields are open for member use, with their own throwers, with up to three guests in accordance with all posted rules, and the bylaws.

Members must use the center trap range area. Using the areas to the left or right may result in shot fallout on the pond or rifle range.

Failure to follow the rules or lack of sound judgment may result in the Board revoking your range privileges.

General Trap Range Rules:

- Sign the shooting log before you begin to shoot.
- Obey the posted rules.
- Display your membership card on your person or on your range bag in a conspicuous manner.
- You are allowed **three (3) guests** on any range. That means three persons in your immediate area under your supervision. They may not use other ranges if you're not with them. You are fully responsible for their behavior.
- Actions must be open at all times when not shooting.
- Shotguns must be pointed in a safe direction when loading.
- All practice must be done in the center field for safety.
- All shooting must be done from the concrete walkways to ensure safe shooting angles.
- Eye and ear protection is recommended for everyone on the field.
- Only low brass shells may be used on the trap

fields. 3 dram equivalent max, no 10 gauge.

- No shot larger than 7.5 may be used on the trap fields at any time.
- No shooting before 7AM Monday to Saturday
- No showing before 9AM on Sunday
- Trap loads (7.5 or smaller shot, 3 drams or less) may be patterned on the patterning board supplied, in the center field only. NO HIGH BRASS OR TURKEY LOAD PATTERNING. That can only be done on another range.
- Anyone under 18 must be always under the direct supervision of an adult.
- Pick up your hulls, boxes and other trash when finished shooting.
- No parking or driving on the trap fields.

Rifle and Pistol Range:

Three ranges are available for Member use.

From left to right they are:

Range 1: 35 yd, Pistol, Rifle, Shotgun

Range 2: 50 yd, Pistol, Rifle, Shotgun (slug only)

Range 3: 100/200 yd, Rifle (Pistol & Shotgun with restrictions).

Failure to follow the rules or lack of sound judgment may result in loss of range privileges.

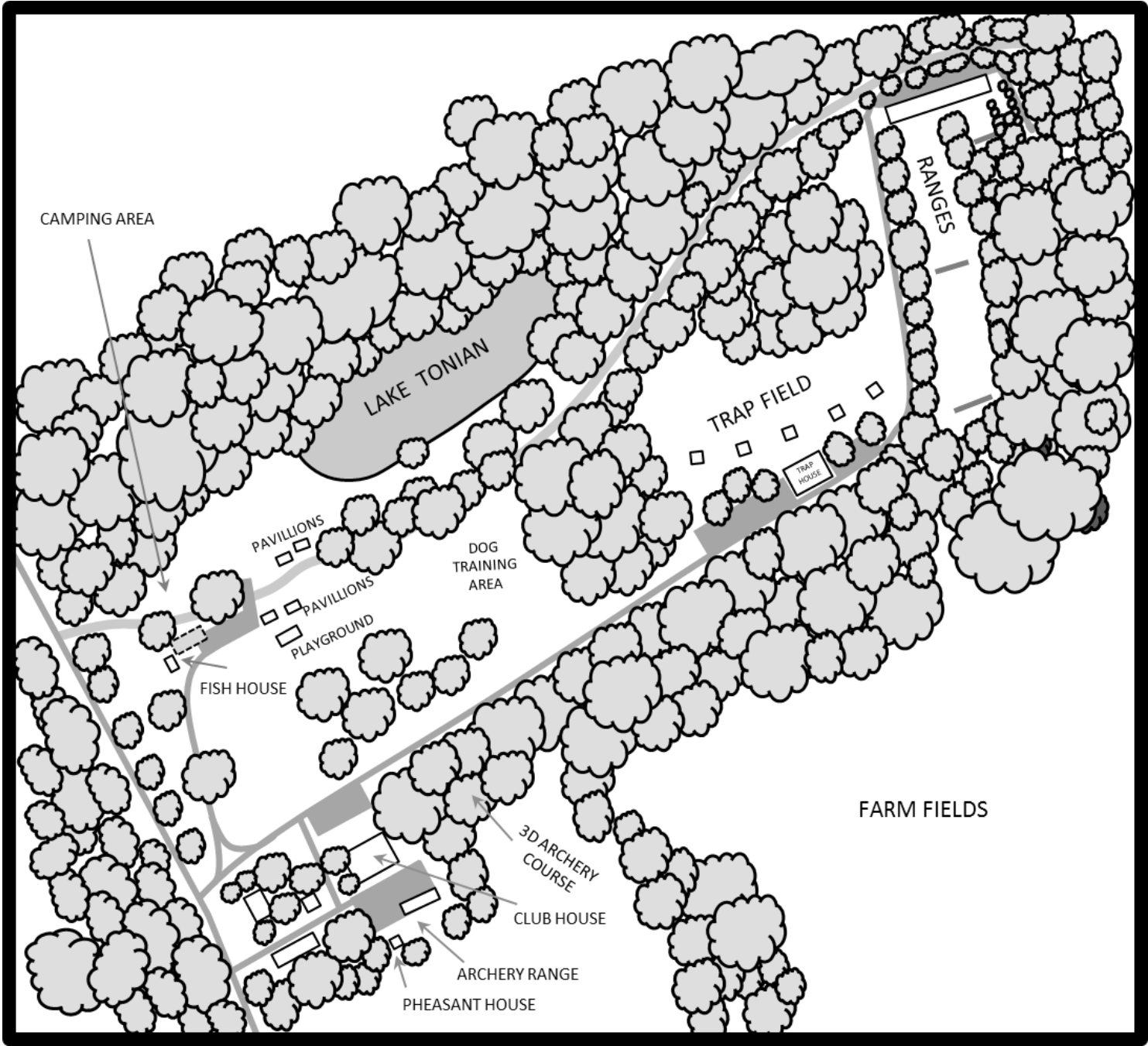
General Range Rules:

- Sign the shooting log before you begin to shoot.
- Obey the posted rules.
- Display your membership card on your person or on your range bag in a conspicuous manner.
- You are allowed **three (3) guests** on any range. That means three persons in your immediate area under your supervision. They may not use other ranges if you're not with them. You are fully responsible for their behavior.
- **All shots fired must impact an earthen berm!** Targets must be positioned so bullets impact the backstops (earthen berms) not the ground or side berms. Bullets can ricochet from the ground or concrete walls and leave the range.
- Birdshot and Buckshot may only be used patterned on **Range 1**
- On **Range 2**, you may shoot closer than 50 yds by turning on the Red Warning Lights and moving downrange; however, shooters wishing

to shoot at 50 yards have priority.

- When using **Range 3** with open sighted handguns, muzzleloaders, and shotguns, know your ballistics to prevent any rounds striking the ground. Use the 100 yard "bermlet" to the left, or any of the "bermlets" to the right (50, 75, 125, 150 yd)
- Turn on **Red Warning Lights** before going downrange on **Range 2** and **Range 3**. Do not handle firearms anytime someone is downrange. When you have verified that nobody is downrange, turn OFF the Red Warning Lights before resuming shooting.
- **Orange Safety Flags** are provided on Range 2 & Range 3 that must be carried downrange and may be placed in the target stand bracket. Ensure the flag was returned to bracket at the benches and everyone is back before shooting.
- **Orange Safety Cones** are provided at each end of the 200 yard target stand that must be placed on top of the mound (in front of the 200 yard targets) so they are visible from the shooting benches. Ensure the cones are not visible and everyone is back before shooting.
- Do not shoot target frames or posts.
- Do not put targets on tables, stools, or other club equipment.
- Destruction of club property may result in loss of membership, even if not intentional.
- No glass, cans, bottles, or frangible targets may be used. Clay Birds are acceptable targets.
- No fully automatic firearms.
- Guns must be cased, holstered, or actions must be open at all times except when shooting.
- Point guns downrange at a berm when loading.
- Eye and ear protection is recommended for everyone on the ranges.
- No shooting before 7AM Monday to Saturday
- No showing before 9AM on Sunday
- **Please pick up your spent cases, targets, boxes and other trash when finished shooting.**
- No parking or driving on the ranges (this is for club use only to minimize damage).
- Report any injuries, damage to facilities, shots leaving the range, or rule violations to info@yorkiwa.org

Map of the Grounds





Lake Tonian

Rules and Regulations

- Fishing in the pond is restricted to members and their immediate family only
- Fishing in the pond is allowed all year (except during ice-overs)
- All Pennsylvania fishing regulations are to be followed with the exception of those rules outlined here
- Redworms are the only live bait allowed when fishing the pond and that use is limited to children under the age of 13. Nightcrawlers or pieces of nightcrawlers are prohibited
- The use of barbless hooks is highly encouraged but not currently mandatory
- Do not introduce any fish, reptiles, birds, etc. of any kind to the pond
- Use of any watercraft is prohibited
- Swimming and ice skating is prohibited

2024 Creel limits

Bluegill: Catch and immediate release

Crappie (black and white): Unlimited harvest, no size restriction

Largemouth Bass: Unlimited harvest of any bass less than 13"

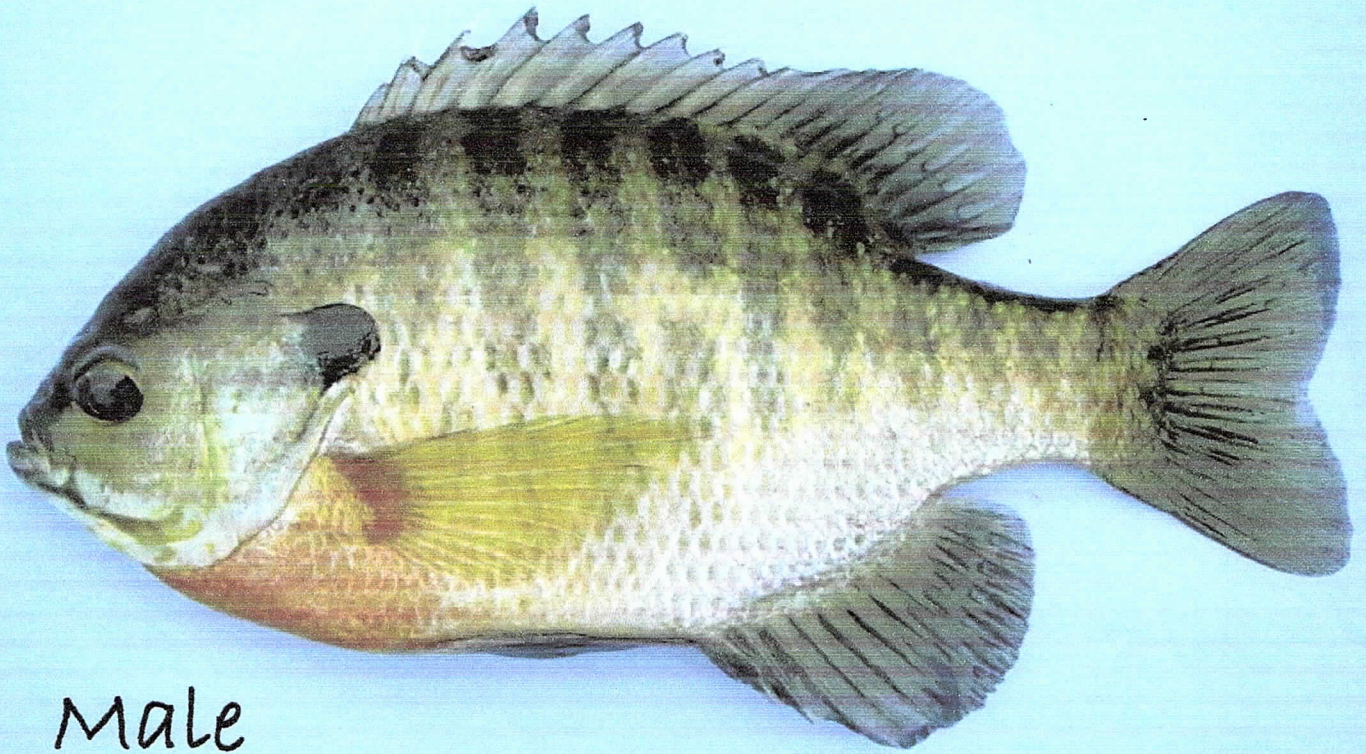
Catch and Immediate release of any bass 13" or longer

Catfish: Unlimited harvest, no size restriction

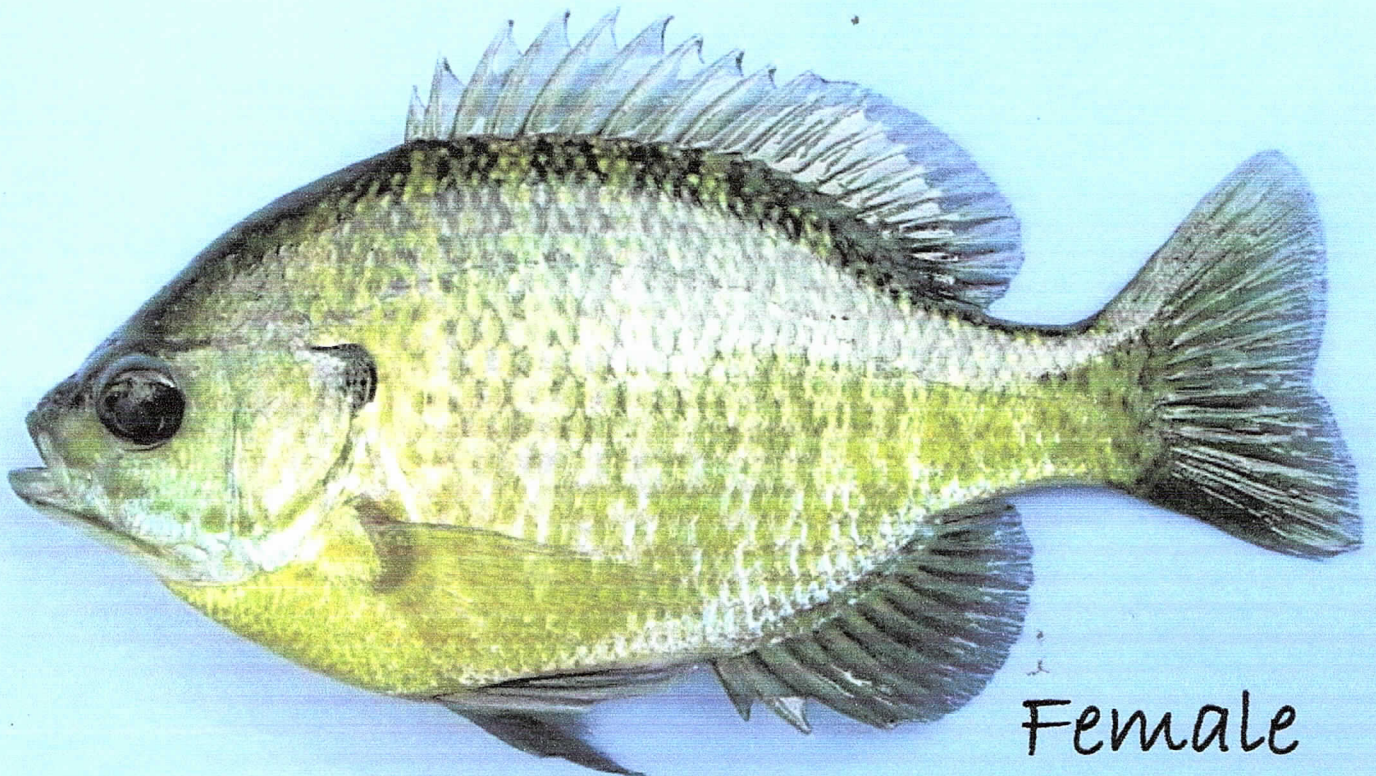
Any incidental catches of species not mentioned: Unlimited harvest, no size restriction

Any questions, comments, or request for angling support please contact: Greg Zeigler: 717-578-1718 or zigsjigs@comcast.net

Bluegill identification

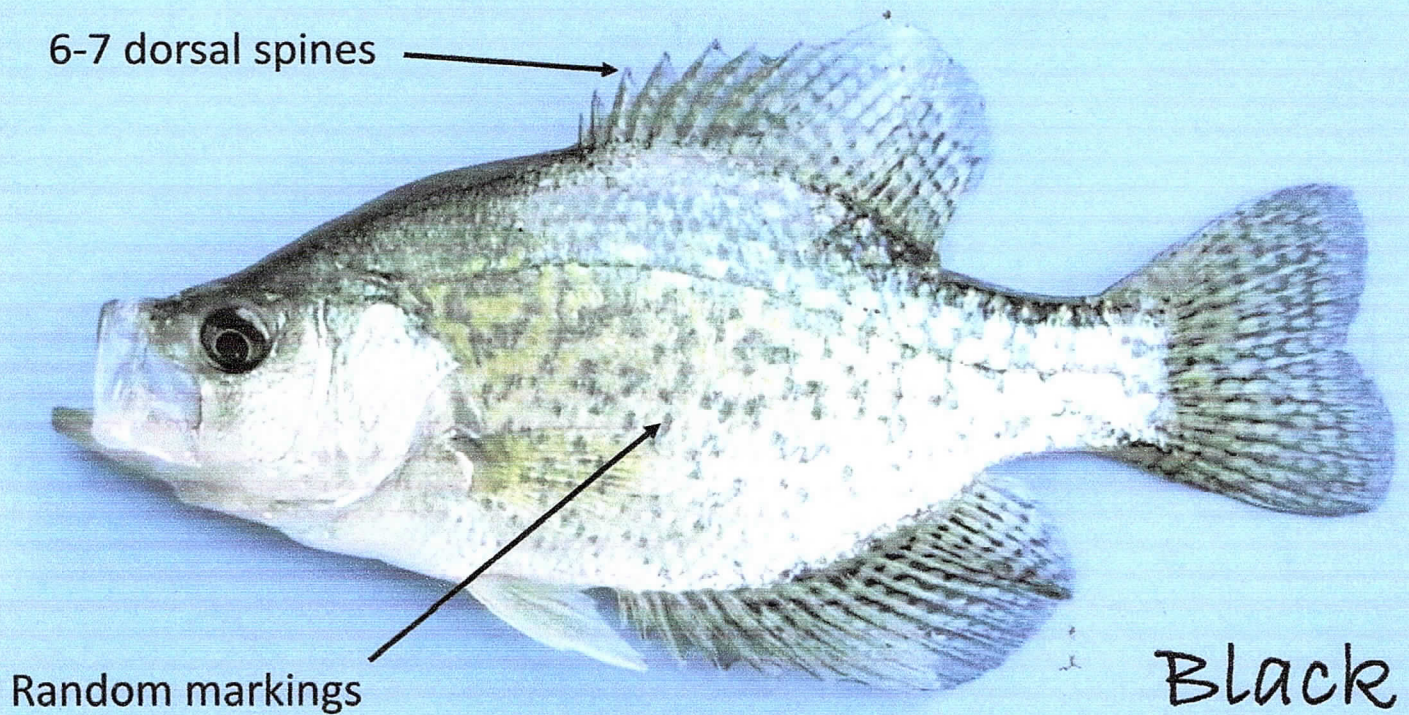
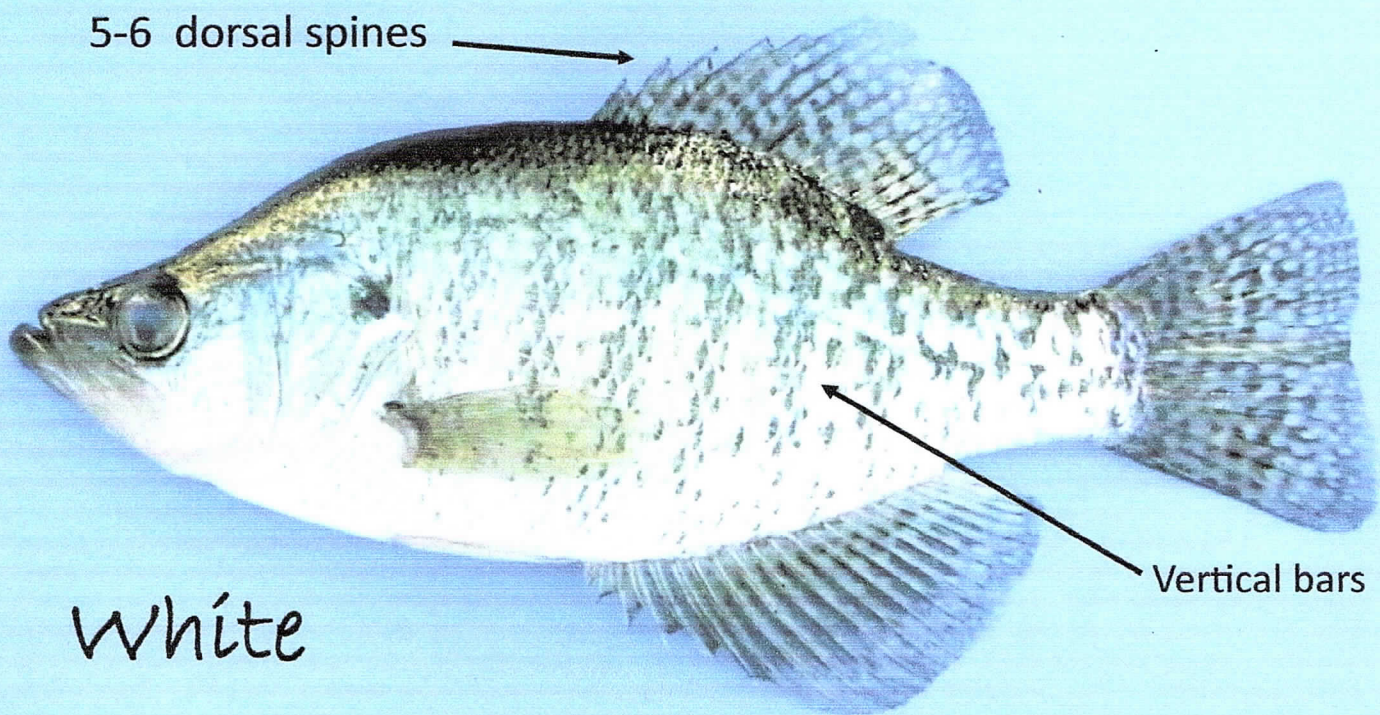


Male

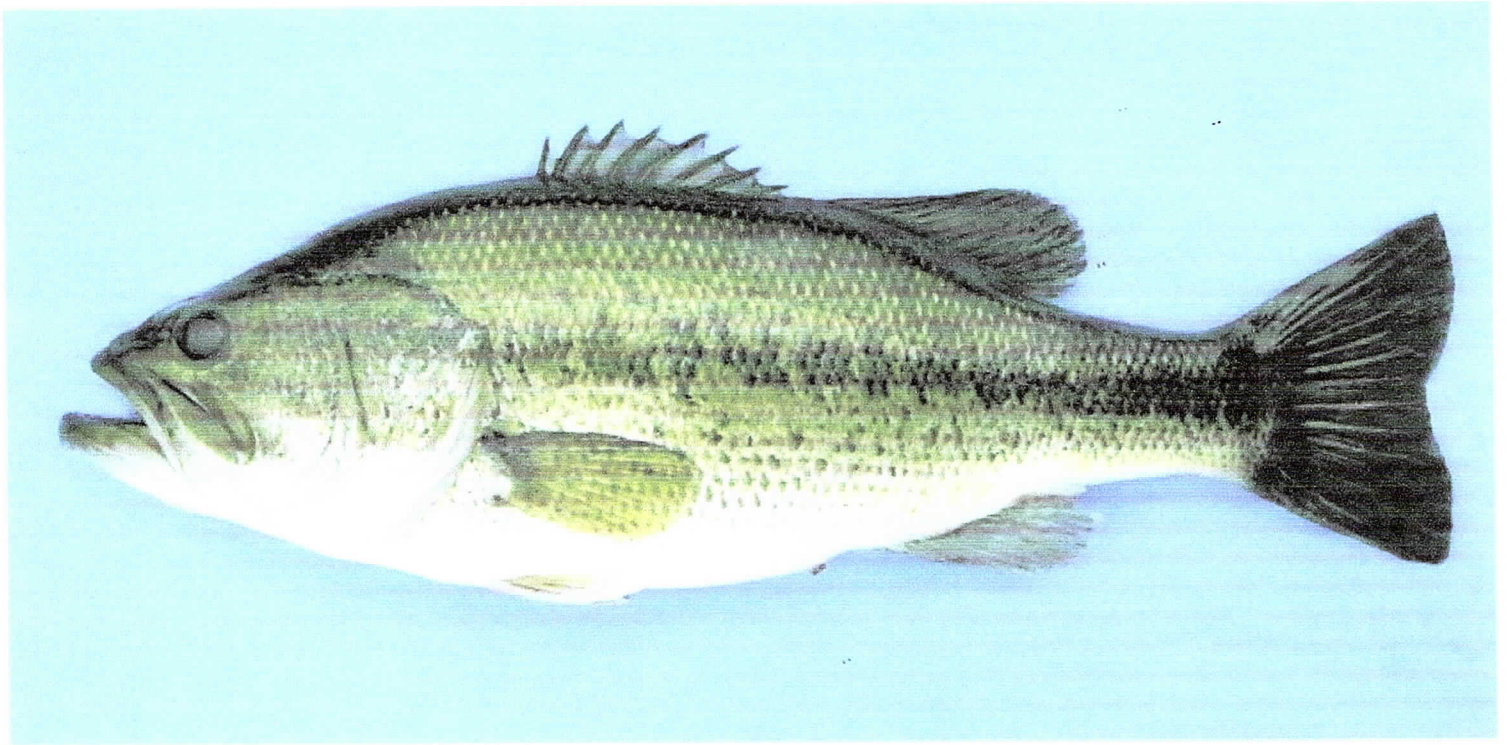


Female

Crappie identification



Largemouth Bass identification



Coloration with vary with water clarity and location within the pond

