



Head Teacher's Note

Dear parents/carers,

As we approach the end of the long term, with the daylight hours getting shorter, we have been reflecting in school of the things that we have to be grateful for. Students have been encouraged during wellbeing, and their sessions with the pastoral team, to think about ways that they can promote their own mental health and well-being, as well as looking out for friends and family over the winter season.

It has been a pleasure to read the lovely comments that teachers have written on the certificates that will be presented to students after the Christmas quiz. At times, we may all need reminding of the power of our words, and it has been especially good to see how our students have supported one another during the mock exam period and how focused they have all been in the exams.

The links that we have built with other further education providers has given our key stage 4 media students the opportunity to work with staff from Bournemouth University to explore the uses of AI. We are looking forward to expanding these partnerships and developing more special projects with other local education providers and our community including attending the panto at The Regent Centre.

We are always proud of our students' achievements and miss them when they move on, so it has been especially lovely to receive visits and updates from previous students. Some who are pursuing college courses, attending university or have started successful careers, and we always enjoy hearing about their progress. We hope that their success, along with the numerous visits to colleges, university and careers events inspire our existing students to work hard to follow their ambitions.

Finally, thank you for all the gifts, cards and well wishes as we approach the end of term. They are truly appreciated by the whole team.

Enjoy the festive break,

Rez





Pastoral

At Connie Rothman School, we are committed to supporting the wellbeing and mental health of our students. All staff play an active role in promoting a positive and nurturing environment, working collaboratively to help each student thrive emotionally, socially, and academically. For those who require more focused support, we offer weekly therapeutic sessions tailored to individual needs. Alternatively, students can access regular check-in sessions to ensure they feel heard, supported, and valued. These sessions will be reviewed every 6-8 weeks.

For any Pastoral concerns please contact:

Em Adlem - Pastoral Lead eadlem@crlt.org.uk

Rudi Coulter - Pastoral Assistant rcoulter@crlt.org.uk

Deep Listening

Deep listening is a concept that has been around for a while. I was recently reminded about it after reading an article, which got me thinking about what we do in school, how we employ it and what we can do to improve communication with the young people we serve. Deep listening is not always conscious and has been part of our ethos since the inception of our charity, the school and our other provisions.

Deep listening is focusing on what another person has to say and doing it without the distractions of mobile phones, laptops, and the detritus of noise that envelopes us. However, it is more than that. It is being completely present for that person – being non-judgemental, picking up on nonverbal clues, paying attention to the other person's emotions, and responding to them. Letting the person talk without interrupting is an important and, often, unique skill.

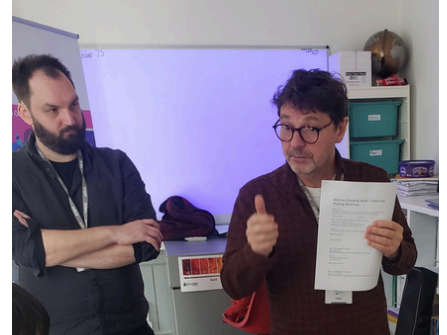
I am lucky because I get to see how deep listening works daily with the way our pastoral team, Emma and Rudi, interact with students. The way in which they check in with all students and the time they take, picking up on each young person's fears, anxiety, and needs is exemplary. Our school is exceptionally lucky to have such a great team caring for our students.

Edward - CRLT Chief Executive

Media Project with Bournemouth Uni

Last month we welcomed Nick and Phil from Bournemouth University. They did a project with some of our Media students where they each made a short film about what they think the future of work will be like and what they see for themselves. They used AI to convey their ideas. We were so impressed with their final videos, especially given the short amount of time they had for their creations. We are hoping to have more collaborations with others in the future to run new and exciting workshops with our students!

Caroline - Special Projects Co-ordinator



Games

Year 10 enjoying Games afternoon by playing table football. A very enjoyable activity when the weather outside is wet, even the staff join in!

Alison - Teaching Assistant



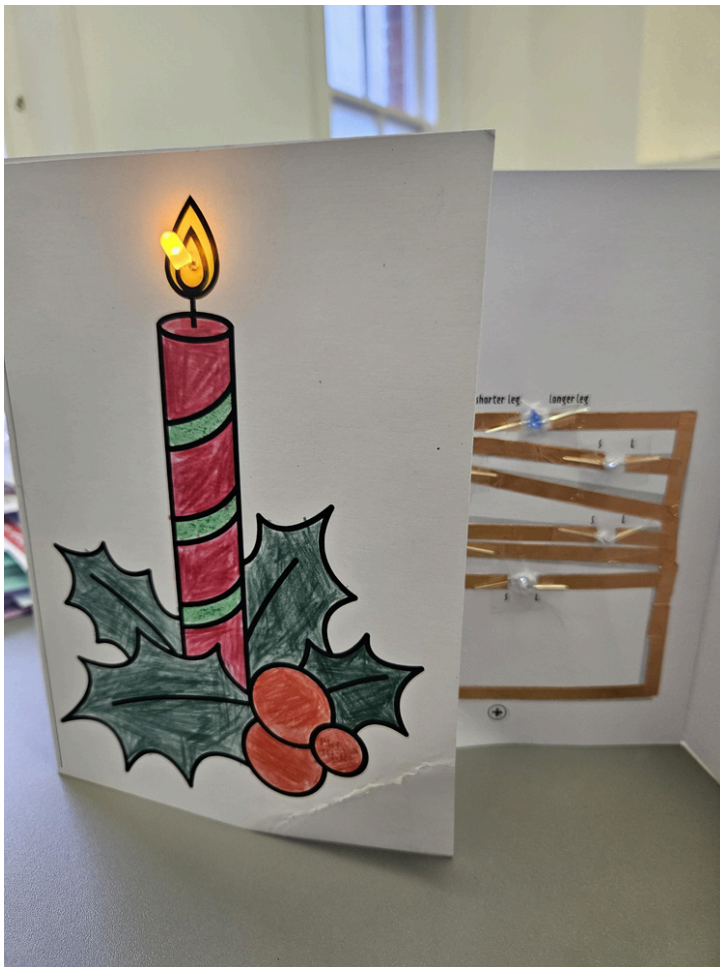


Library Sessions

The Key Stage 3, Emerging Group, and year 10s are just reaching the end of their AQA awards unit on Forensic Science and Criminal Scene Investigation (CSI) at the library sessions on Friday.

This included studying fingerprint analysis, footprint analysis and DNA analysis. During the sessions we conducted experiments in class looking at our own fingerprints and analysing them and analysing our own footprints. We have also continued with our study of the Italian language learning basic words and phrases that can be used in everyday situations.

Rudi - Pastoral Assistant



Physics

Our Key Stage 3 students made light-up Christmas cards in physics last week. Blending creativity and hands-on learning, students applied their knowledge of electrical circuits, using small LEDs to give their designs a seasonal glow.

Jenny - Physics and Maths Teacher



Animal Care

During the Autumn term Connie Rothman School introduced a new BTEC Level 2 Animal Care qualification. This has been an incredible adventure for both students and teaching staff as we've had to navigate not only learning how to handle and restrain animals correctly, but also how to apply this on a farm setting. Students and staff spent time at Nick's Farm where they worked alongside Nathan the farm worker with a wide range of animals.

Well done to our two students who successfully completed their first component which has been sent off for final moderation. They will now begin their next component which will be externally assessed in the summer term. We wish them all the best.

Adrian - Assistant Head Teacher and Animal Care and Business Teacher



Clubs

We have restarted debating club, which has allowed students the chance to discuss interesting subjects and learn how to exchange opinions.

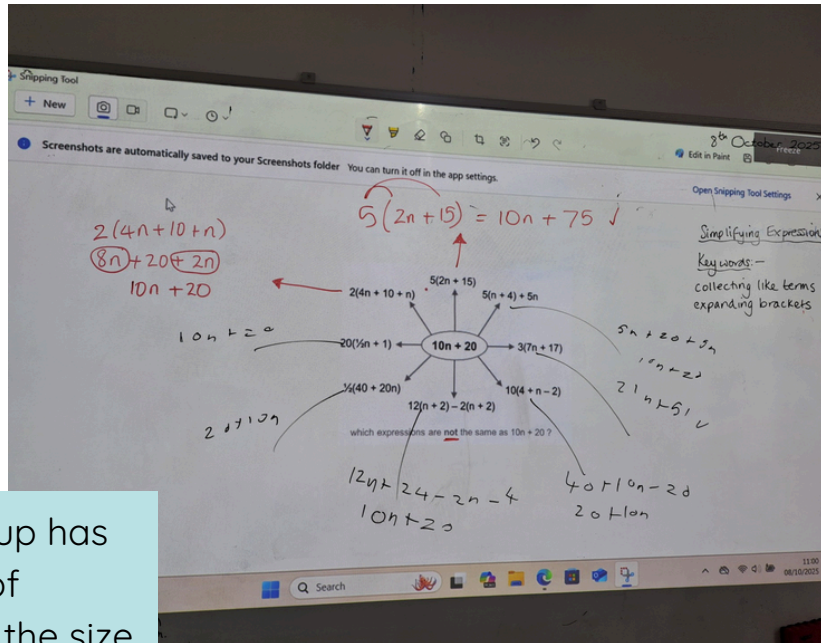
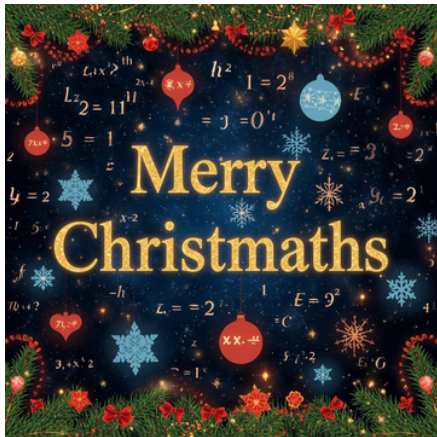
It has been good seeing more students taking part in lunchtime clubs including football, dungeons and dragons and boardgames which has allowed the opportunity to expand friendships across the whole school.

Roz and Rudi

Maths

After the budget announcement a couple of weeks ago the Emerging Group were discussing the minimum wage and income tax boundaries. Students were encouraged to calculate the amount of tax payable of various employees, an opportunity to use their percentage skills.

Alongside this topic students have also been working with algebra: expanding brackets; collecting like terms and solving equations. Photo shows an example of a student's work.

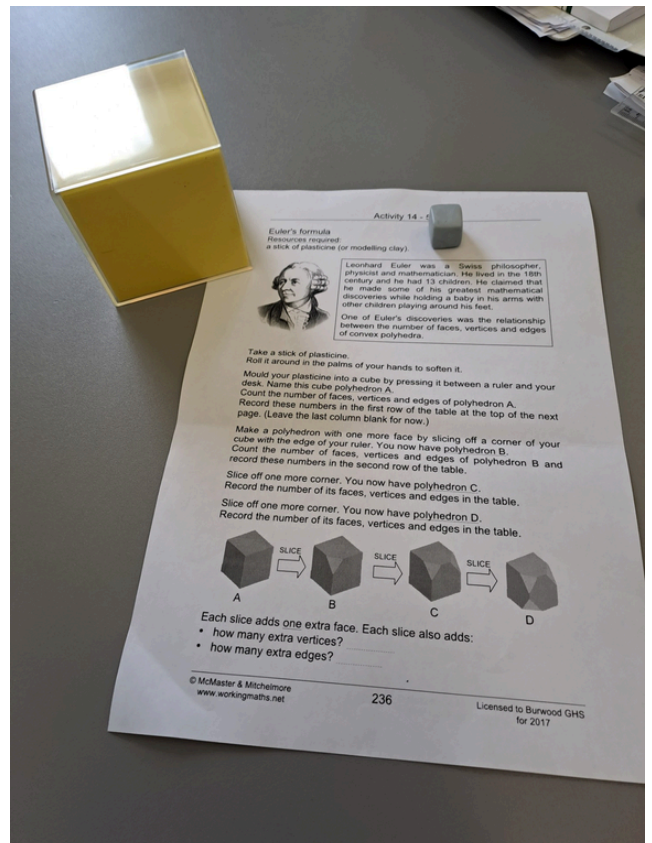


Over the last few lessons the group has begun to explore the properties of shapes with a view to calculating the size of interior angles. Students have recently explored the relationship between the number of faces, edges and vertices of numerous 3D solids. They were able to confirm Euler's Formula, enjoyed creating some of the Platonic solids from the 2D nets and making truncated cubes from Blu Tac. See photo.

Looking forward to more topics on Geometry next term.

Merry Christmaths! (Not a typo but a bad joke)

Zoë - Maths Teacher



English & Life

In English we have been focusing on literature this term. The students have been dissecting the elements of a text and practising using the techniques that they have found in their own work. It has been fantastic seeing this skill transfer in the mock exams that our Year 11 students have recently taken.

Students have enjoyed cooking and sewing in life lessons this term. The Year 11's especially enjoyed making a gingerbread train which took a great deal of patience and team work!

Briony - English & Life Teacher



Early Childhood Development

In Early Childhood Development the students have enjoyed exploring different types of play and how this helps our development. The students were able to use their role play skills and have a go at selling ice creams to each other using different forms of language skills (such as verbal, non-verbal, English as a second language etc). Next term we will be visiting some local schools, such as the Steiner School and Montessori School to see how they compare to other types of educational settings.

Em Adlem - Early Childhood Development Teacher and Pastoral Lead

Our last day of term is Friday 19th December, the day ends at 12:10pm.

We hope all our school families enjoy a lovely break over the Christmas holidays, whatever your plans may be. We look forward to welcoming you back to school on Monday the 5th of January 2026.

-The whole team at Connie Rothman School

Important Dates for your Diary

Monday 5th January 2026	First Day of Spring Term
Wednesday 14th January 3:30pm-5:30pm	Parents Evening (please follow the link in the e-mail to book)
Week of 19th January	Year 10 test week
Friday 13th February	Twynham Science Day for Year 10
Monday 16th-Friday 20th February	Half Term break
Wednesday 25th February	Online Parents Evening (link to be book will be sent before half term)
Week of 2nd March	Year 11 mock week
Thursday 12th March	Careers Fair at the BIC
Friday 27 th March	Term ends at 12:10pm
Monday 30th-Friday 10th April	Easter Holidays
Monday 13th April	Back to school for Summer Term

Useful Contacts

Childline: 08001111

Shout: Text 85258

Samaritans: 116 123

Kooth: <https://www.kooth.com>

If you believe a child is in immediate danger or at risk of significant harm, please contact the Police on 101 or 999 if urgent, and/or use the contact information below.

If you are a member of the public please telephone:

Bournemouth, Christchurch & Poole: 01202 123334 (01202 738256 if out of normal working hours) or e-mail the Children's First Response team at childrensfirstresponse@bcpcouncil.gov.uk.

Children's First Response Hub website: [BCP Children's First Response Hub](#)

Dorset: 01305 221000 [Worried about a child - Dorset Council](#)

Hampshire: 0300 555 1984

Please note that our school safeguarding email will be monitored during school hours throughout the holidays. Please email concerns to: safeguarding@crlt.org.uk