

## THE CONCORD CENTER INDUSTRIAL WAREHOUSE/FLEX SPACE AVAILABLE FOR LEASE: 9,805 - 14,149 SF



*Welcome to  
The Concord Center*

*formerly*  
The Rumford Press  
1897 - 1983

**10 Ferry Street | Concord, NH**

The Concord Center building offers unmatched accessibility and visibility, as it is located immediately off Interstate 93, and is in close proximity to restaurants, banks, hotels, and much more. This mill-style building formerly occupied by the Rumford Press, offers a wide range of options, from a single office, to large warehouse space. In addition to including on-site maintenance and cleaning, tenants also enjoy use of on-site amenities including a full-service café, fitness center and conference room.



## Specifications:

### TYPE OF CENTER:

Warehouse/Office

### GROSS LEASABLE AREA:

173,445

### PARKING:

Ample on-site parking

### FIRE PROTECTION:

Fully Sprinklered

### HVAC:

Natural Gas-Fired Modine

### CLEAR HEIGHT:

Suite 121: 12' - 15'

### FIBER:

Fairpoint/Comcast

### SEWER/WATER:

City of Concord

### POWER:

Unitil

### GAS:

Liberty Utilities

## Amenities:

Prominent location in Concord's Business District

On-site Café

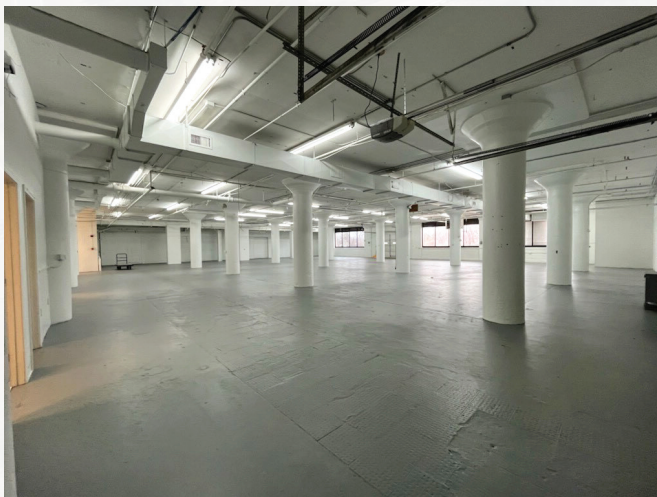
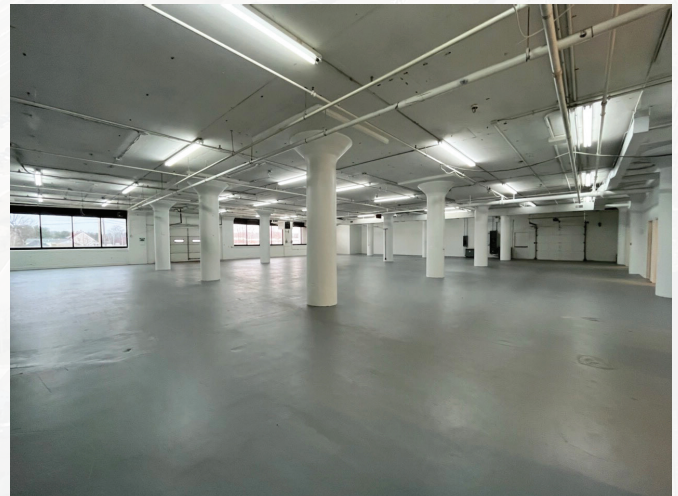
Free Gym Facility

Over 500 Free Parking Spaces

On-Site Maintenance Staff

Recently upgraded common areas

Direct Access to Major Highways & Close Proximity to Manchester-Boston Airport



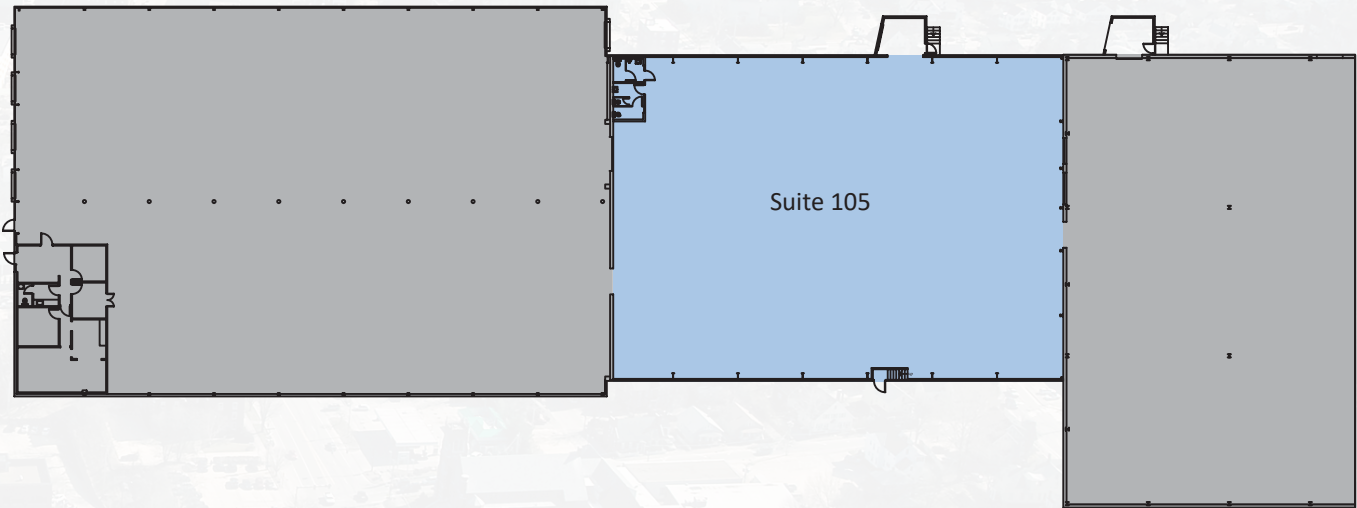


Availabilities:

Suite 105: 14,149 SF (11/1/2025)  
Suite 121: 9,805 SF



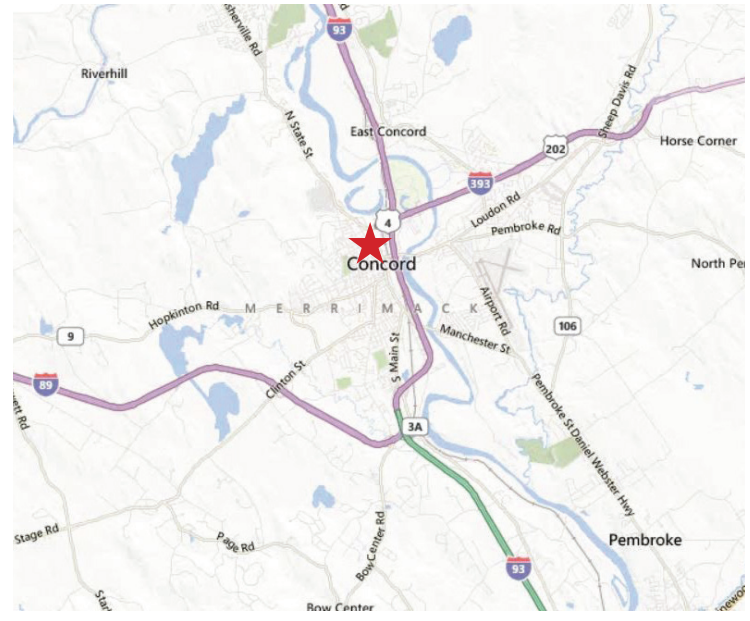
First Floor North



First Floor South







**JOHNFLATLEY**  
Company

**For more information,  
or to schedule a tour, please contact:**

**Tom Maregni**  
Direct 781.917.5306  
Office 781.380.7731  
[thomas.maregni@johnflatleyco.com](mailto:thomas.maregni@johnflatleyco.com)

**Corporate Headquarters | 45 Dan Rd, Suite 320, Canton, MA 02021 | 781.380.7731**  
**[www.johnflatleyco.com](http://www.johnflatleyco.com) | [info@johnflatleyco.com](mailto:info@johnflatleyco.com)**