

THE CONCORD CENTER INDUSTRIAL WAREHOUSE/FLEX SPACE AVAILABLE FOR LEASE: 9,805 SF

EXIT 14



South Main Str

North Main Street



Welcome to
The Concord Center

formerly
The Rumford Press
1897 - 1983

10 Ferry Street | Concord, NH

The Concord Center building offers unmatched accessibility and visibility, as it is located immediately off Interstate 93, and is in close proximity to restaurants, banks, hotels, and much more. This mill-style building formerly occupied by the Rumford Press, offers a wide range of options, from a single office, to large warehouse space. In addition to including on-site maintenance and cleaning, tenants also enjoy use of on-site amenities including a full-service café, fitness center and conference room.

Specifications:

TYPE OF CENTER:

Warehouse/Office

CLEAR HEIGHT:

16' – 30'

GROSS LEASABLE AREA:

173,445

FIBER:

Fairpoint/Comcast

PARKING:

Ample on-site parking

SEWER/WATER:

City of Concord

FIRE PROTECTION:

Fully Sprinklered

POWER:

Unitil

HVAC:

Natural Gas-Fired Modine

GAS:

Liberty Utilities

Amenities:

Prominent location in Concord's Business District

On-site Café

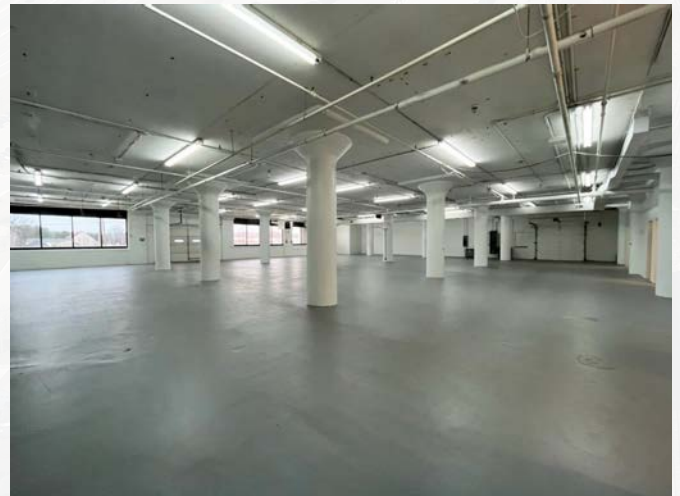
Free Gym Facility

Over 500 Free Parking Spaces

On-Site Maintenance Staff

Recently upgraded common areas

Direct Access to Major Highways & Close Proximity to Manchester-Boston Airport

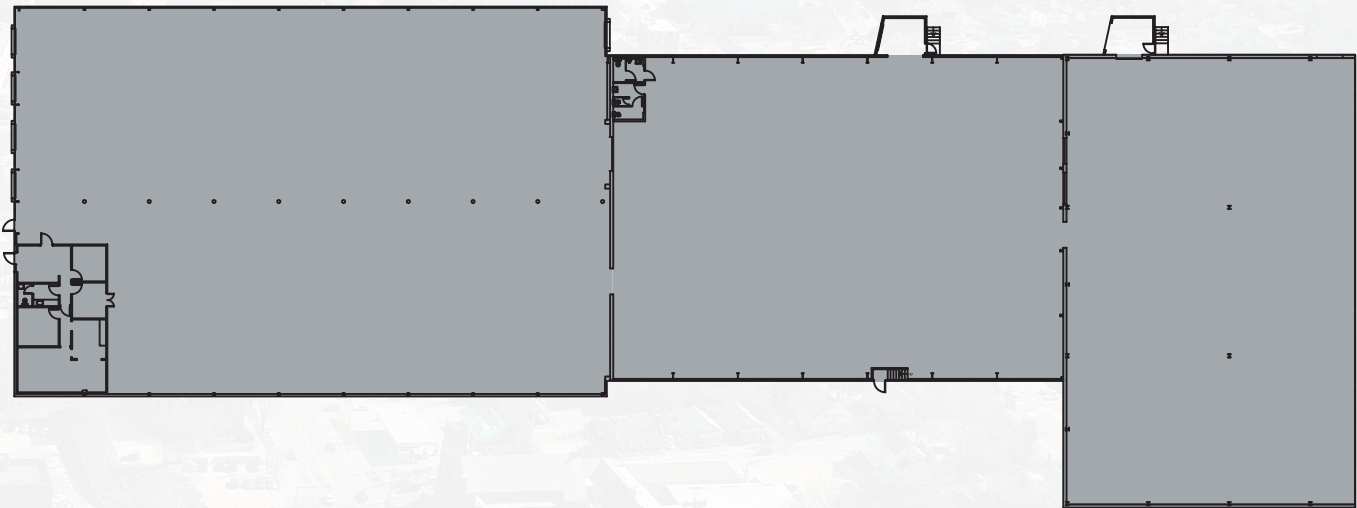


Availabilities:

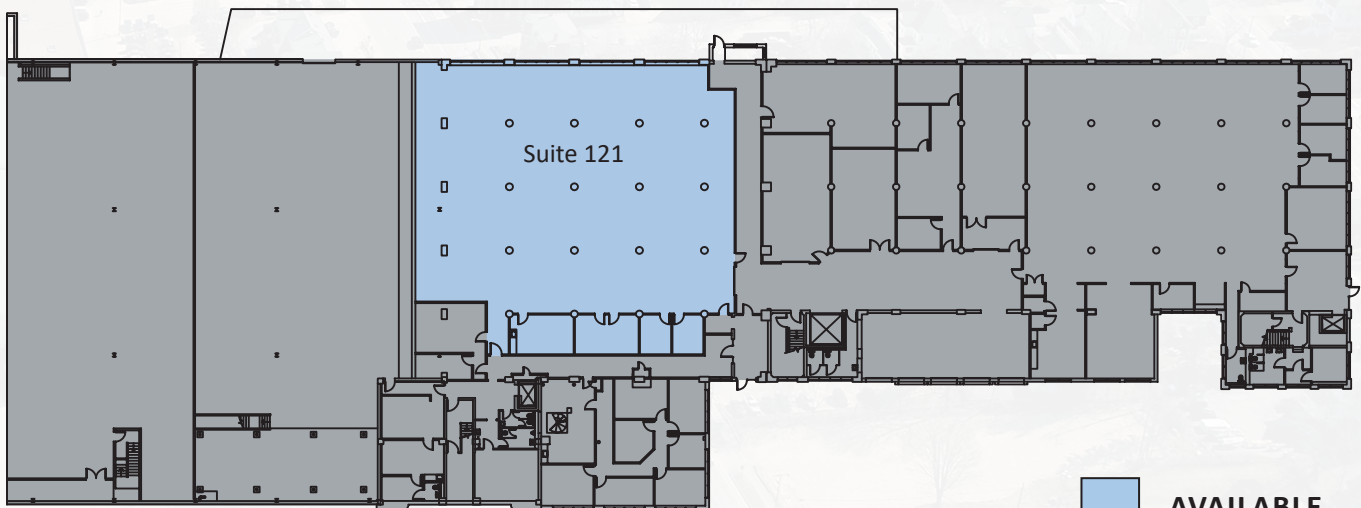
Suite 121: 9,805 SF



First Floor North



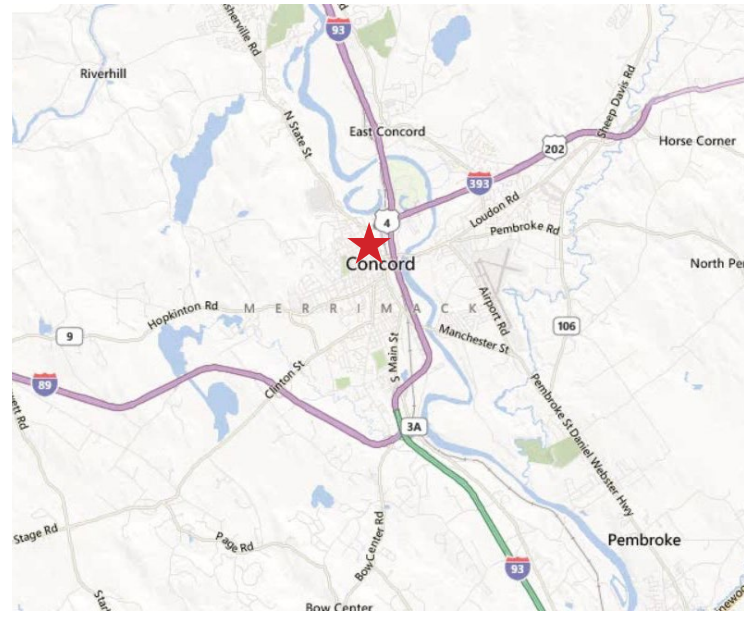
First Floor South





LOCAL AMENITIES

RESTAURANTS:	LODGING/SHOPS:	SERVICES:
1 Papa John's Pizza	10 Centennial Hotel	18 TD Bank
2 Margaritas	11 Fairfield Inn	19 Bank of New Hampshire
3 UNO Chicago Grill	12 The Hotel Concord	20 Bank of America
4 Domino's	13 Residence Inn	21 Eastern Bank
5 Panera Bread/B.Good	14 Comfort Inn & Suites	22 The UPS Store
6 Salm Orchid	15 Holiday Inn	23 US Post Office
7 The Barley House	16 L.L. Bean	24 FedEx
8 Tea Garden	17 Market Basket	25 YMCA
9 The Common Man		26 Capital Center for the Arts



JOHNFLATLEY
Company

**For more information,
or to schedule a tour, please contact:**

Tom Maregni
Direct 781.917.5306
Office 781.380.7731
thomas.maregni@johnflatleyco.com

**Corporate Headquarters | 45 Dan Rd, Suite 320, Canton, MA 02021 | 781.380.7731
www.johnflatleyco.com | info@johnflatleyco.com**