

S p a c e s

Happier
Spaces
20-17

Happier
Production
20-23

Happier
Events
20-19



Floor 6

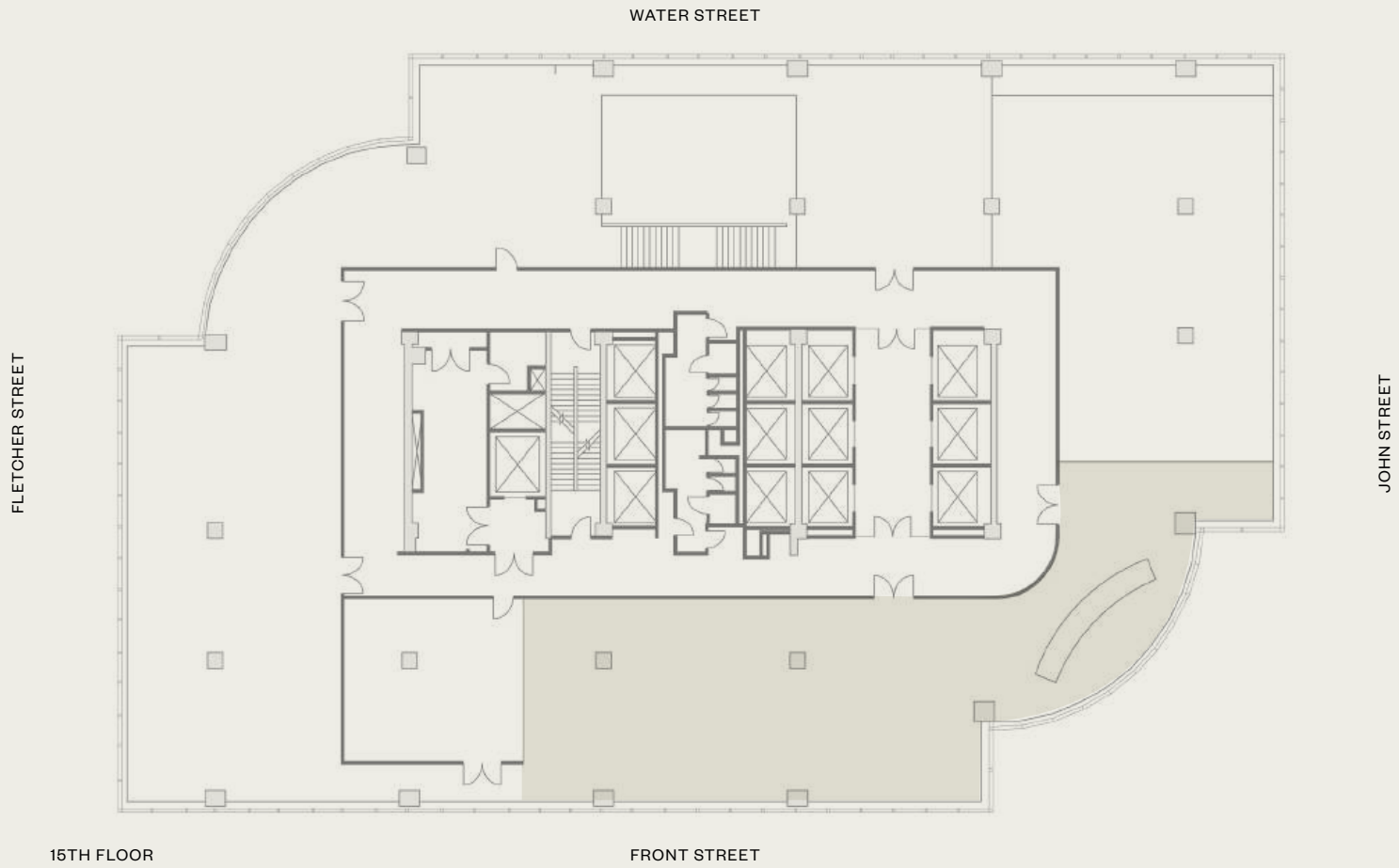




WSA - 6

Gallery Lounge

6



Details and Information

A multi-use private event space with a modern aesthetic, offering stunning views of the Brooklyn Bridge. The neutral tones and minimalist design make it ideal for hosting a variety of gatherings, from intimate celebrations to professional events, in a bright and open setting.

Unit Numer: N/A
Floor Number: 6
Standing Capacity: 500
Seating Capacity: 75
Square Footage: 10,030
Ameneties: Bar, Kitchen, Restrooms



S

Floor 15

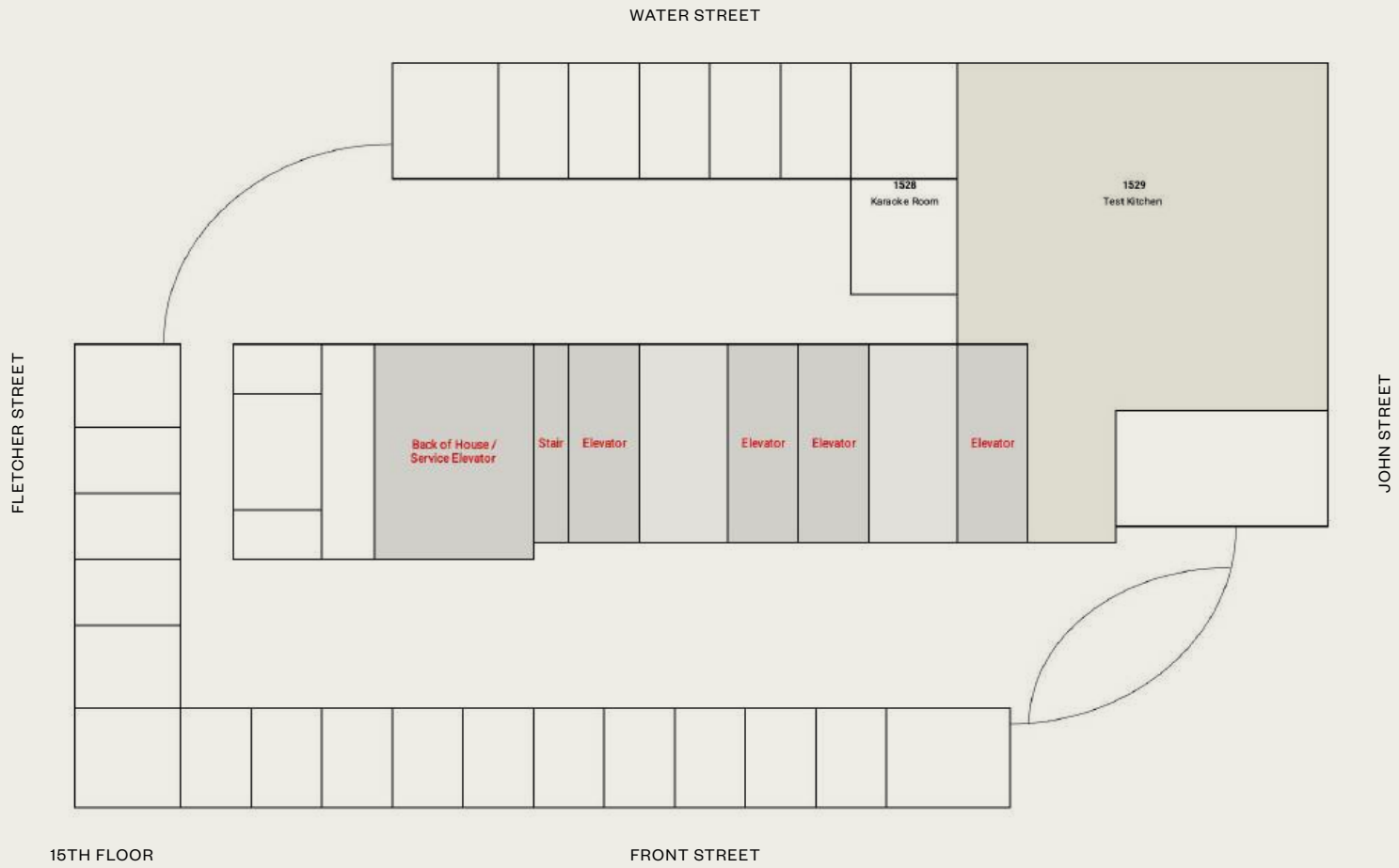




WSA - 15

Test Kitchen

15



Details and Information

This modern dining space features sleek glass tables on rolling steel frames, set against a backdrop of vertical blinds and mirrored walls, creating a minimalist yet elegant atmosphere. Ideal for hosting upscale events, the room is equipped with abundant natural light and a sophisticated bar area in the corner and a fully equipt industrial kitchen.

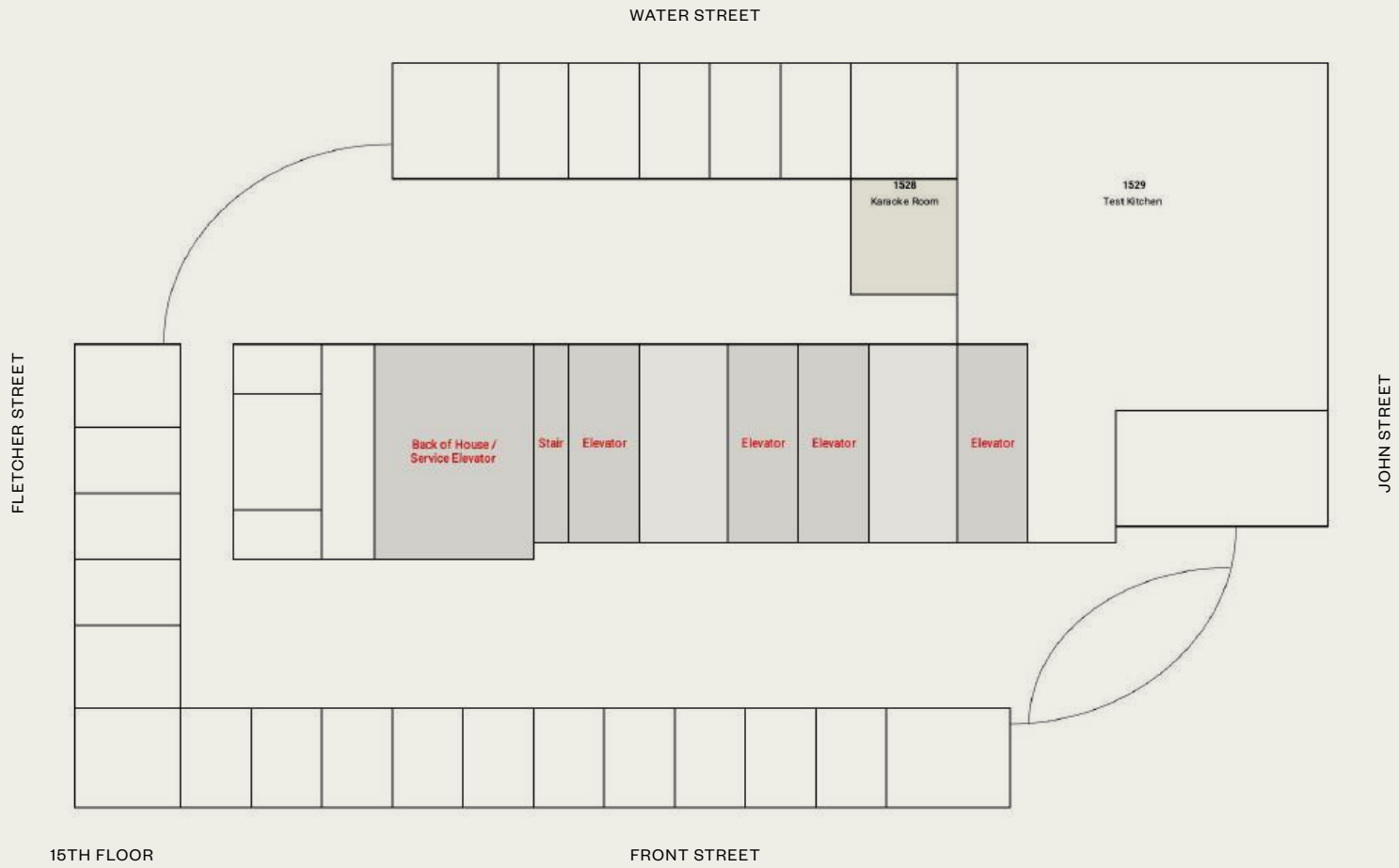
Unit Numer: 1529
Floor Number: 15
Standing Capacity: 100
Seating Capacity: 70
Square Footage: 2070
Ameneties: Bar, Kitchen, Restrooms



WSA - 15

Karaoke Room

15



Details and Information

This intimate karaoke room features plush, velvet-covered walls and seating, bathed in a warm, amber glow from sleek geometric sconces. Designed for comfort and style, it offers a private and cozy atmosphere for private Karaoke.

Unit Numer: 1528
Floor Number: 15
Standing Capacity: 12
Seating Capacity: 12
Square Footage: 170
Amenities: TV,
Microphones



S

Floor 16

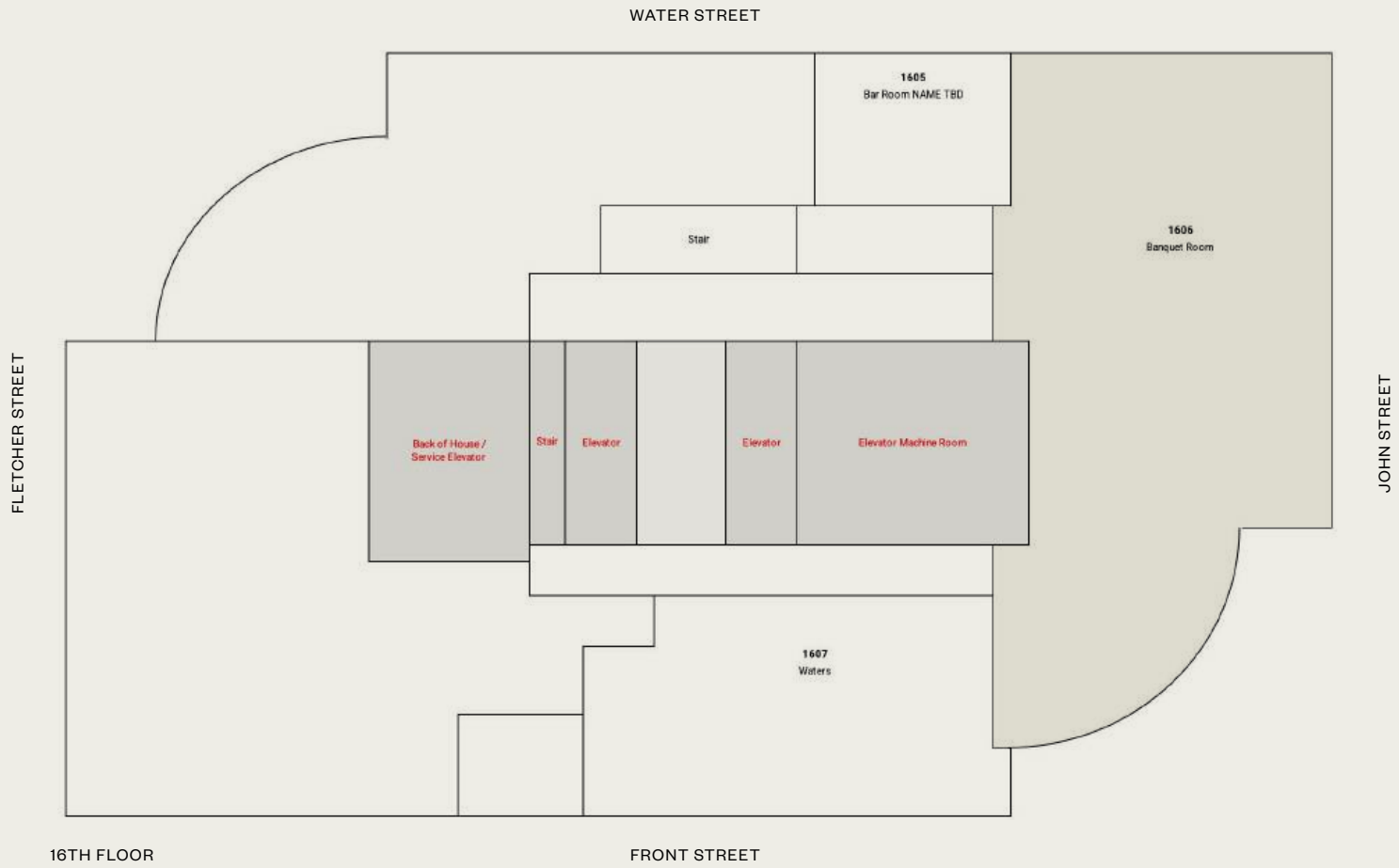




WSA - 16

Banquet Room

16



Details and Information

The banquet space features breathtaking panoramic city views, with curved seating areas and a chic bar complete with modern stools, ideal for cocktail receptions or intimate gatherings. The dining area is designed for a luxurious experience, with plush green booths, sleek black chairs, and tasteful greenery, all enhanced by mirrored walls that create a sense of elegance and spaciousness.

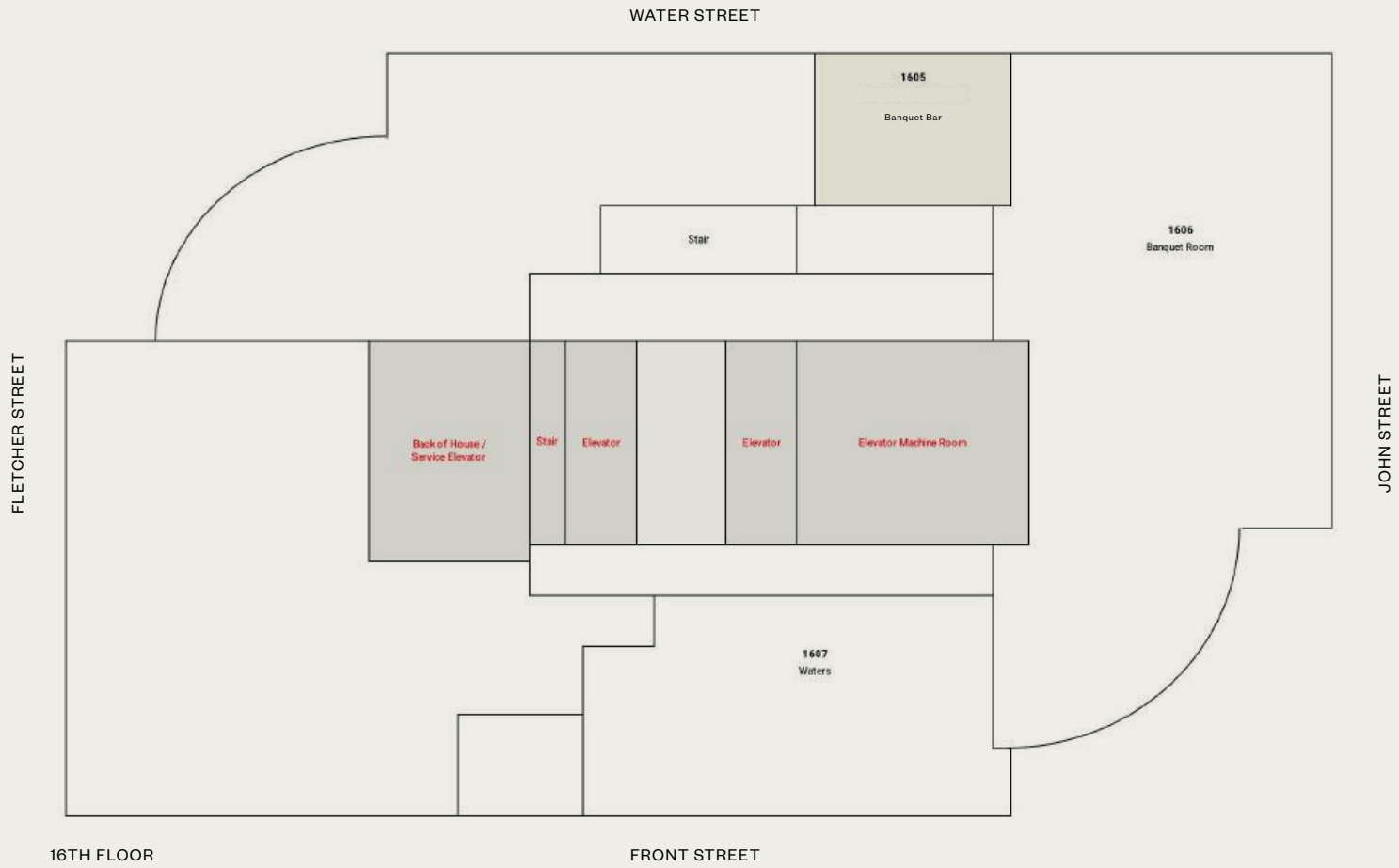
Unit Numer: n/a
Floor Number: 16
Standing Capacity: n/a
Seating Capacity: 174
Square Footage: 4080
Ameneties: Bar



WSA - 16

Banquet Bar

16



Details and Information

This bar room features lounge seating and small round tables. The bar area is highlighted by a mirrored tile backdrop and chrome bar stools, creating a modern yet inviting space for socializing.

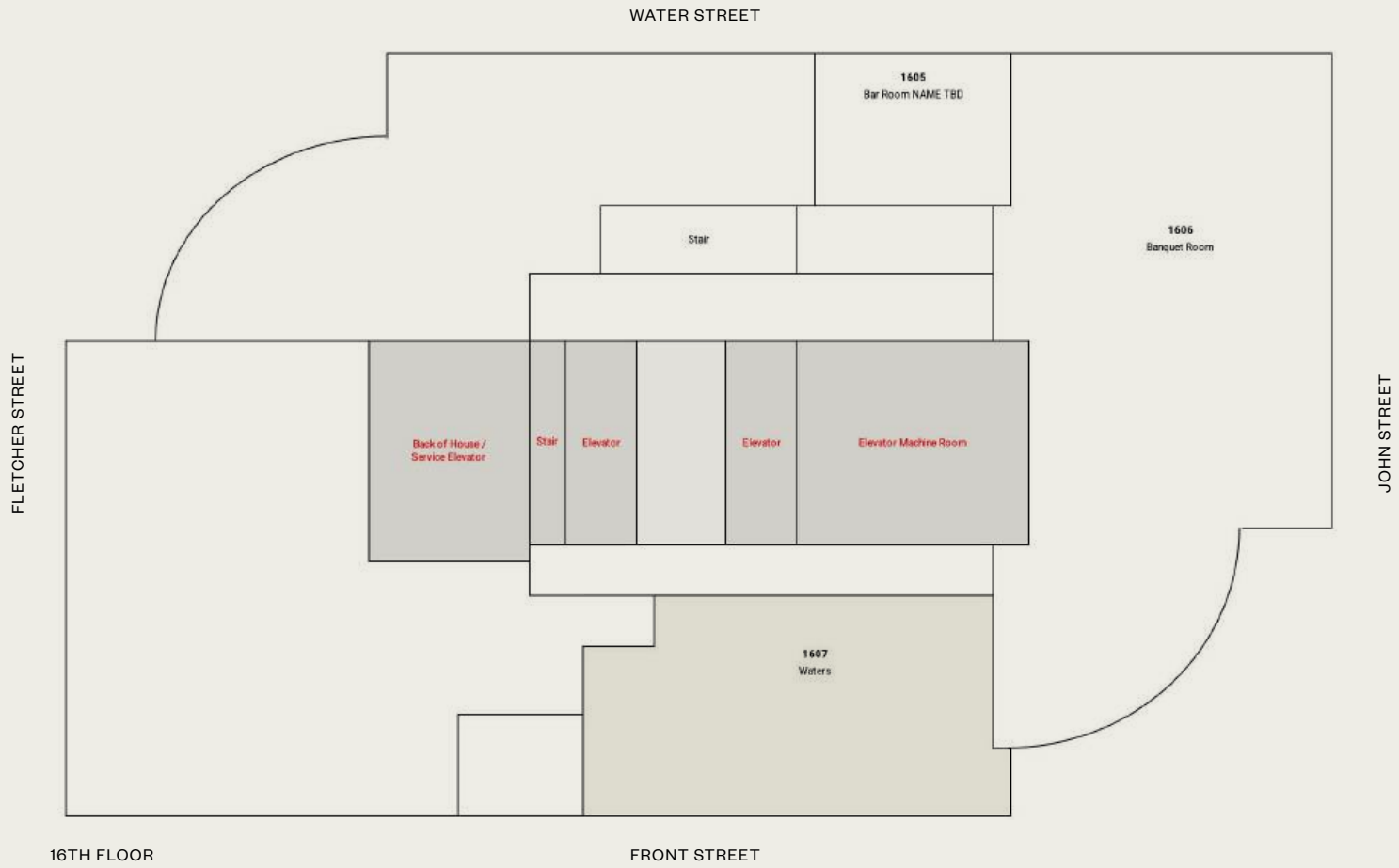
Unit Numer: 1605
Floor Number: 16
Standing Capacity: 50
Seating Capacity: 18
Square Footage: 800
Ameneties: Bar



WSA - 16

Waters

16



Details and Information

Waters restaurant and bar offers a cozy yet refined dining experience with green velvet seating and expansive windows that overlook The Brooklyn Bridge and river views. The space is enhanced by a mirrored ceiling, and warm wood accents, The inviting decor is complemented by soft lighting, making it an ideal spot for both intimate gatherings and larger social events.

Unit Numer: 1607
Floor Number: 16
Standing Capacity: 100
Seating Capacity: 50
Square Footage: 2340
Ameneties: Restaurant, Bar



S

Floor 17

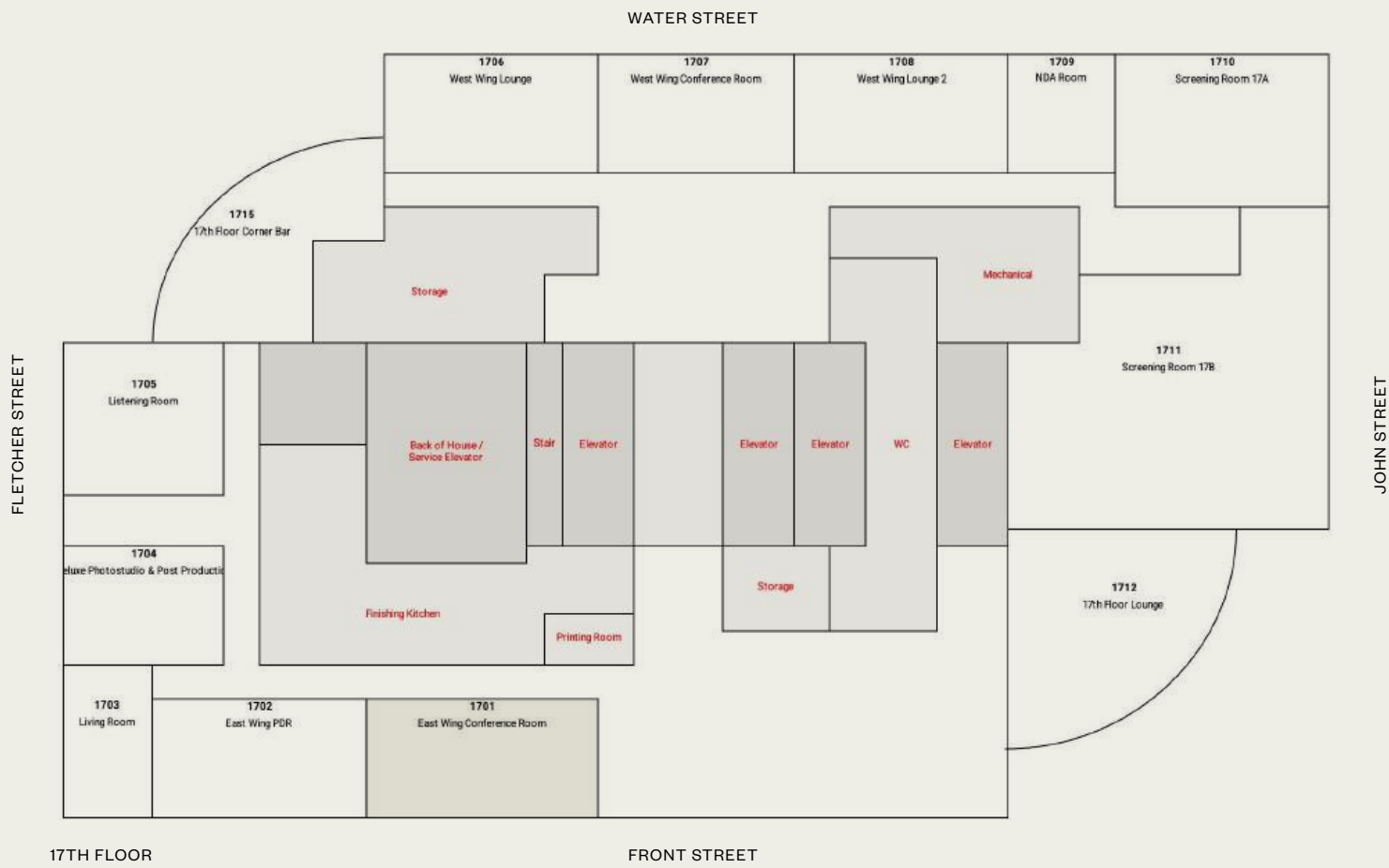




WSA - 1701

East Wing Conference Room

1701



Details and Information

This conference room offers a professional yet comfortable setting, featuring a large central table with sleek leather chairs in a warm, earthy tone. The space is enhanced by soft lighting, floor-to-ceiling windows, and modern amenities, creating an ideal environment for meetings and collaborative work.

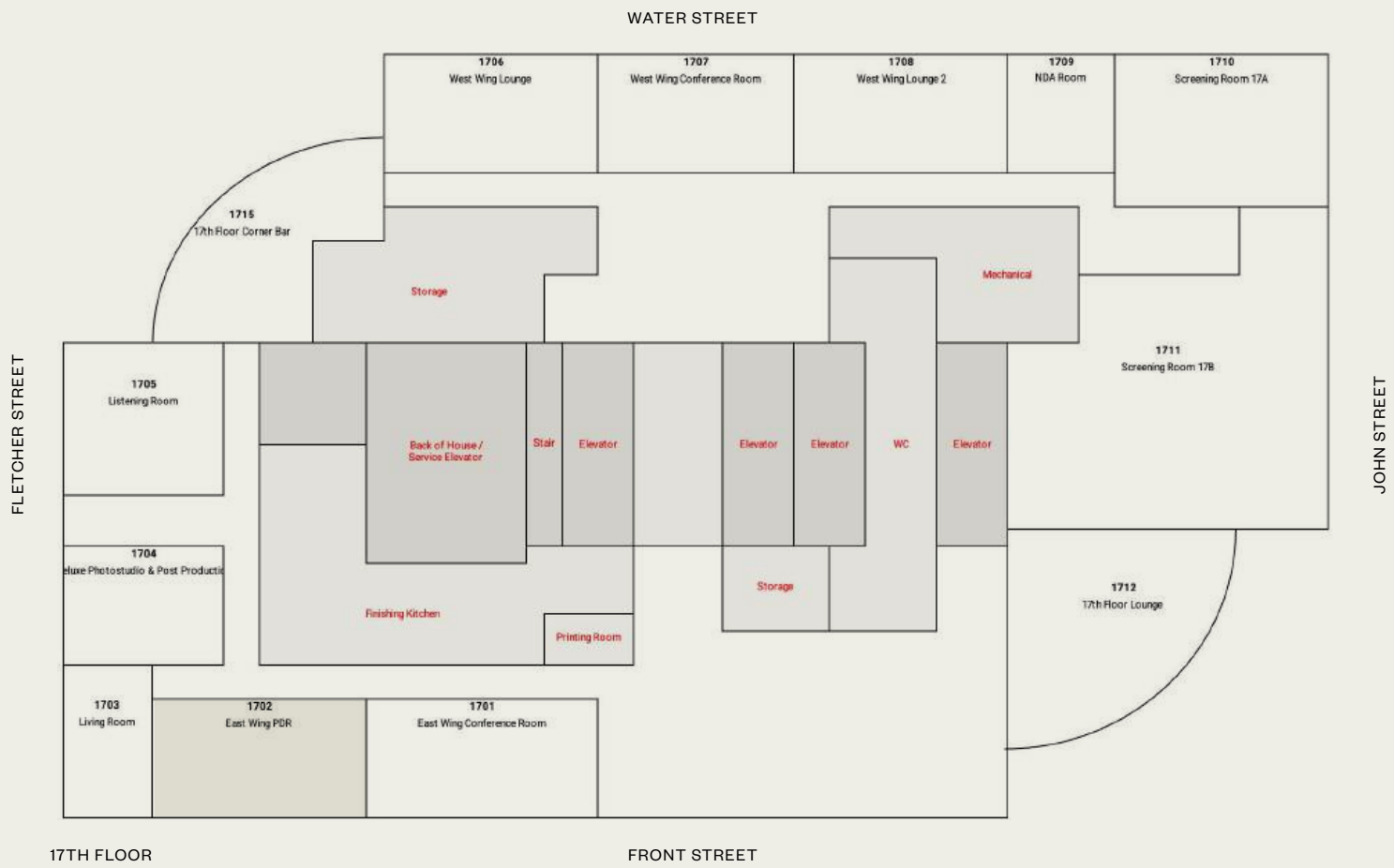
Unit Numer: 1701
Floor Number: 17
Standing Capacity: n/a
Seating Capacity: 12
Square Footage: 450



WSA - 1702

East Wing PDR

1702



Details and Information

This elegant private dining room accommodates up to 14 guests and offers stunning views of the Brooklyn Bridge. Featuring warm tones and modern furnishings it's the perfect setting for an intimate gathering or special occasion.

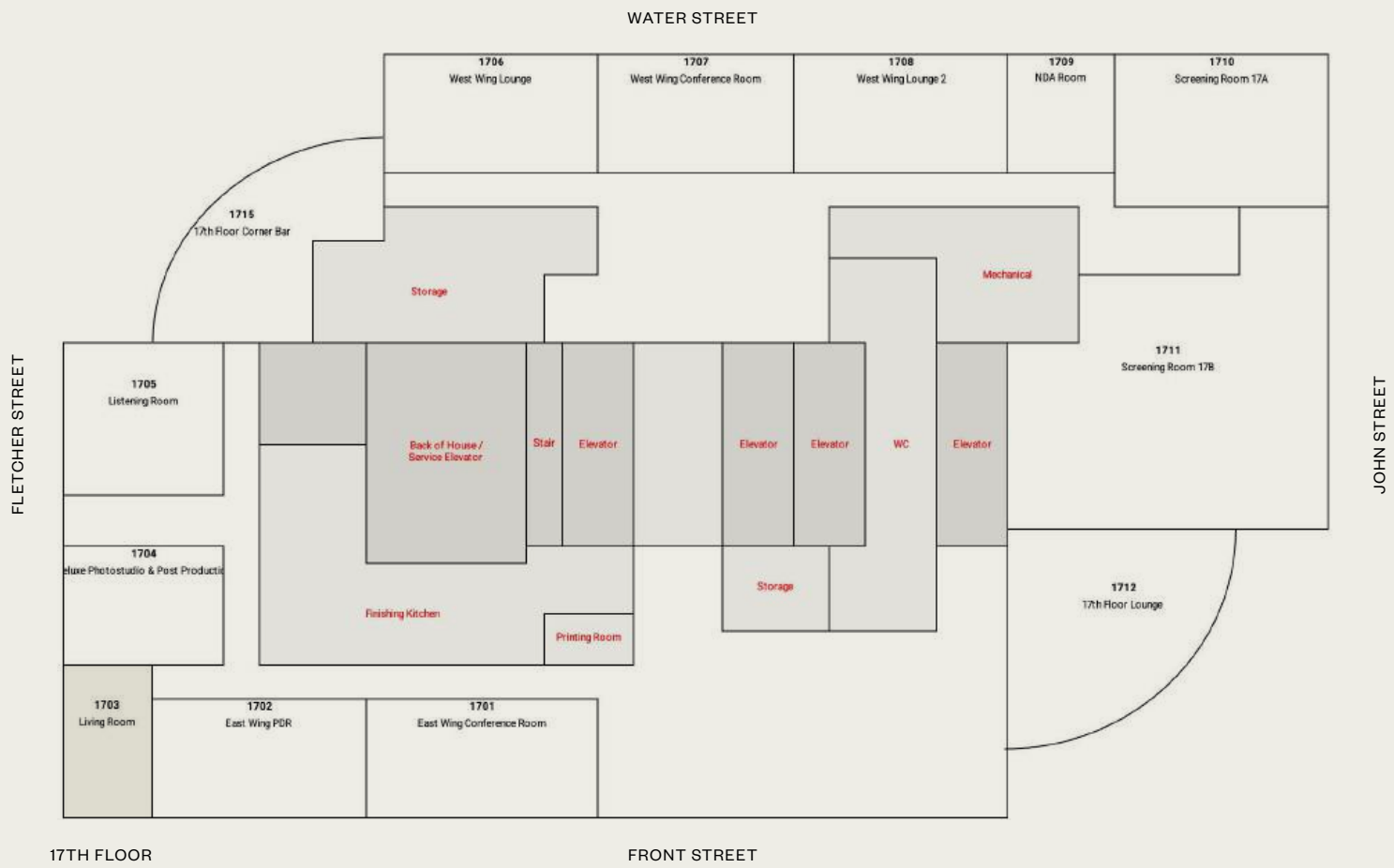
Unit Numer: 1701
Floor Number: 17
Standing Capacity: n/a
Seating Capacity: 12
Square Footage: 450



WSA - 1703

Living Room

1703



Details and Information

The living room features retro-inspired furniture, earthy tones, and large windows overlooking the cityscape. It includes comfortable seating, greenery, and a bar setup, making it ideal for gatherings.

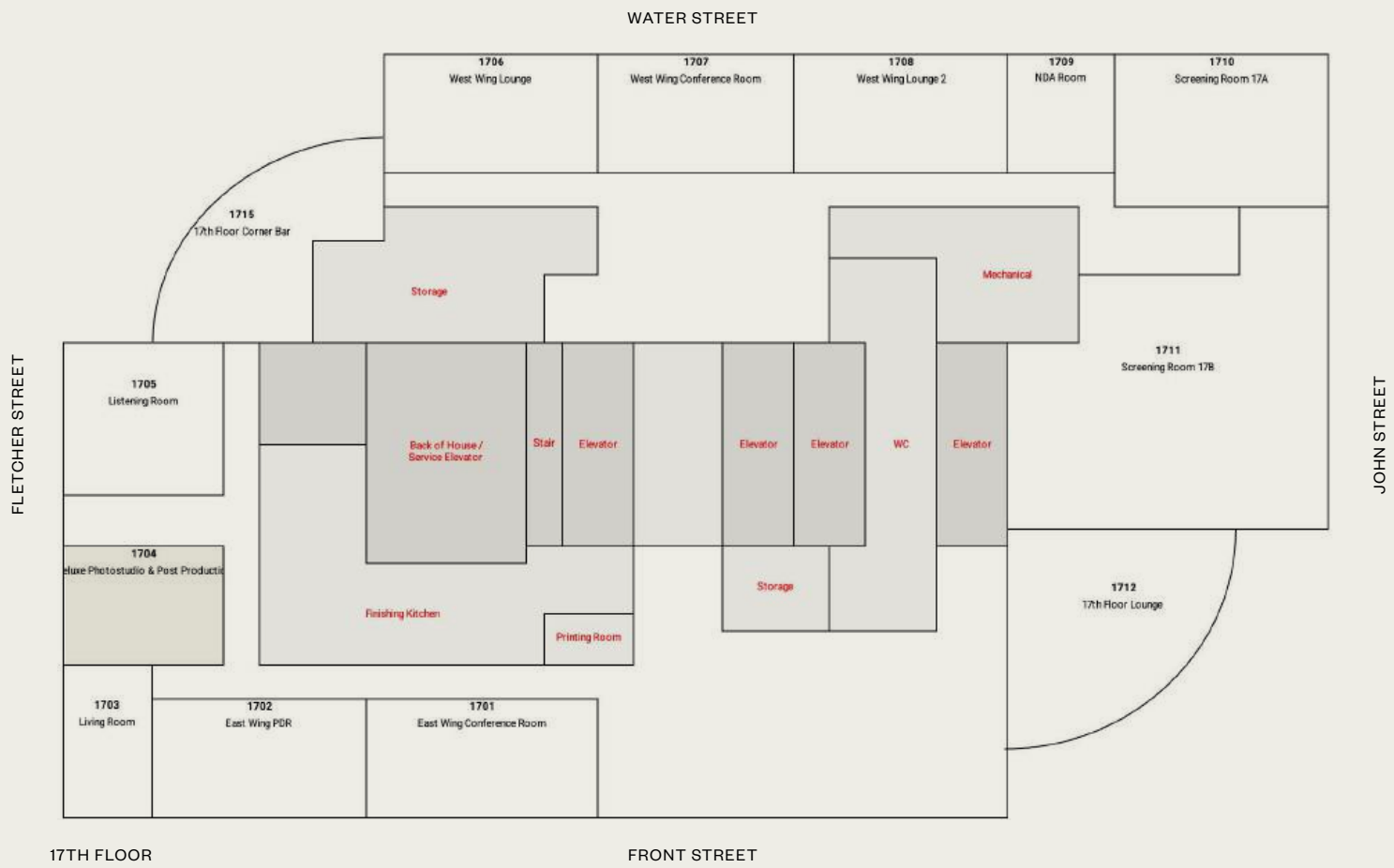
Unit Numer: 1703
Floor Number: 17
Standing Capacity: 15
Seating Capacity: 8
Square Footage: 300



WSA-1704

Classroom

1704



Details and Information

This room has a warm carpet, white walls, and large windows with city views. Four USM tables with contemporary chairs create a flexible setup for discussions, meetings, or styling.

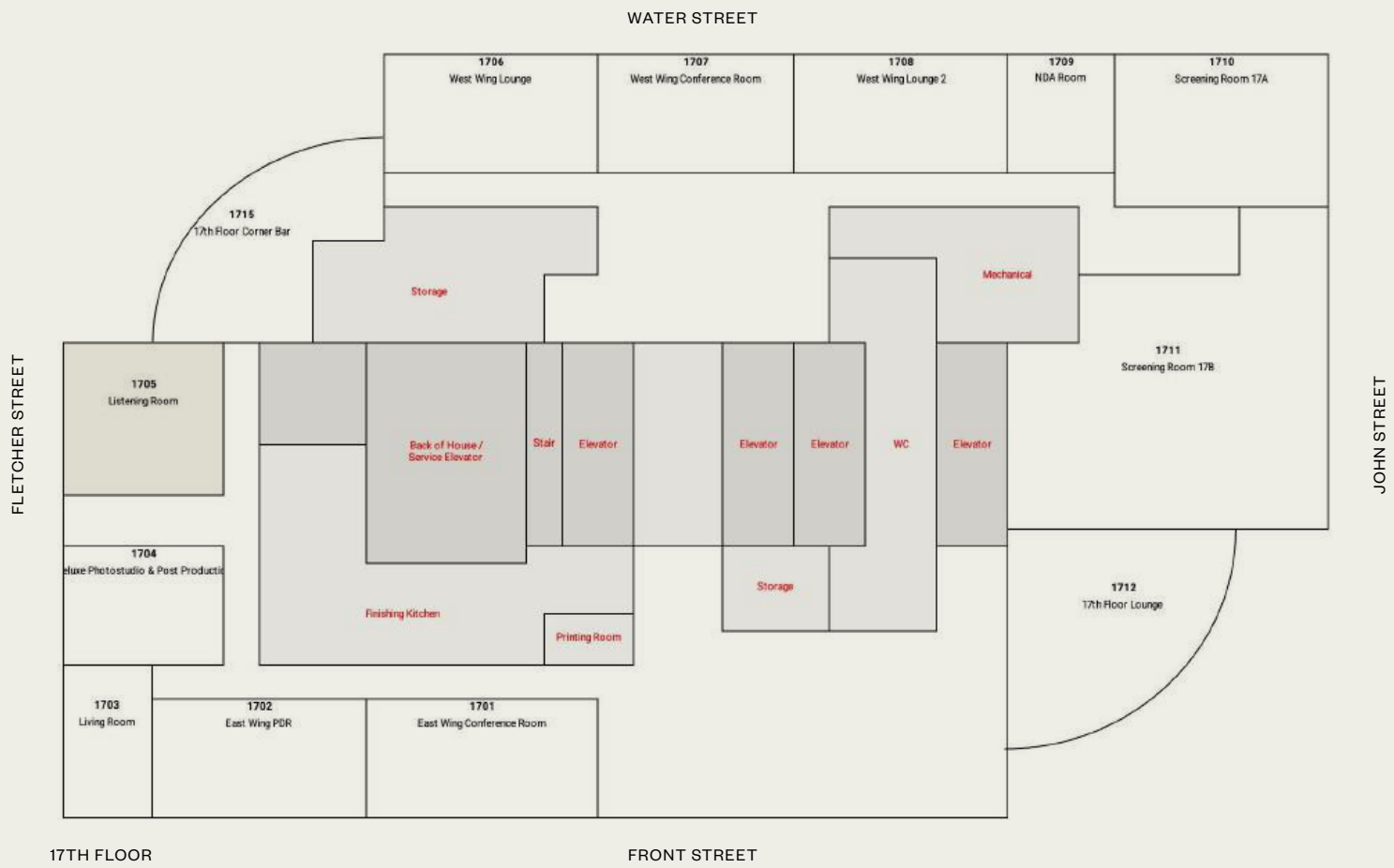
Unit Numer: 1704
Floor Number: 17
Standing Capacity: 35
Seating Capacity: 10
Square Footage: 450



WSA - 1705

Listening Room

1705



Details and Information

The listening room offers a retro look with striped, black sofas, a leather recliner, and a glass coffee table. A wooden console with a record player and vintage speakers highlights its musical focus, while plants and warm lighting enhance the inviting atmosphere.

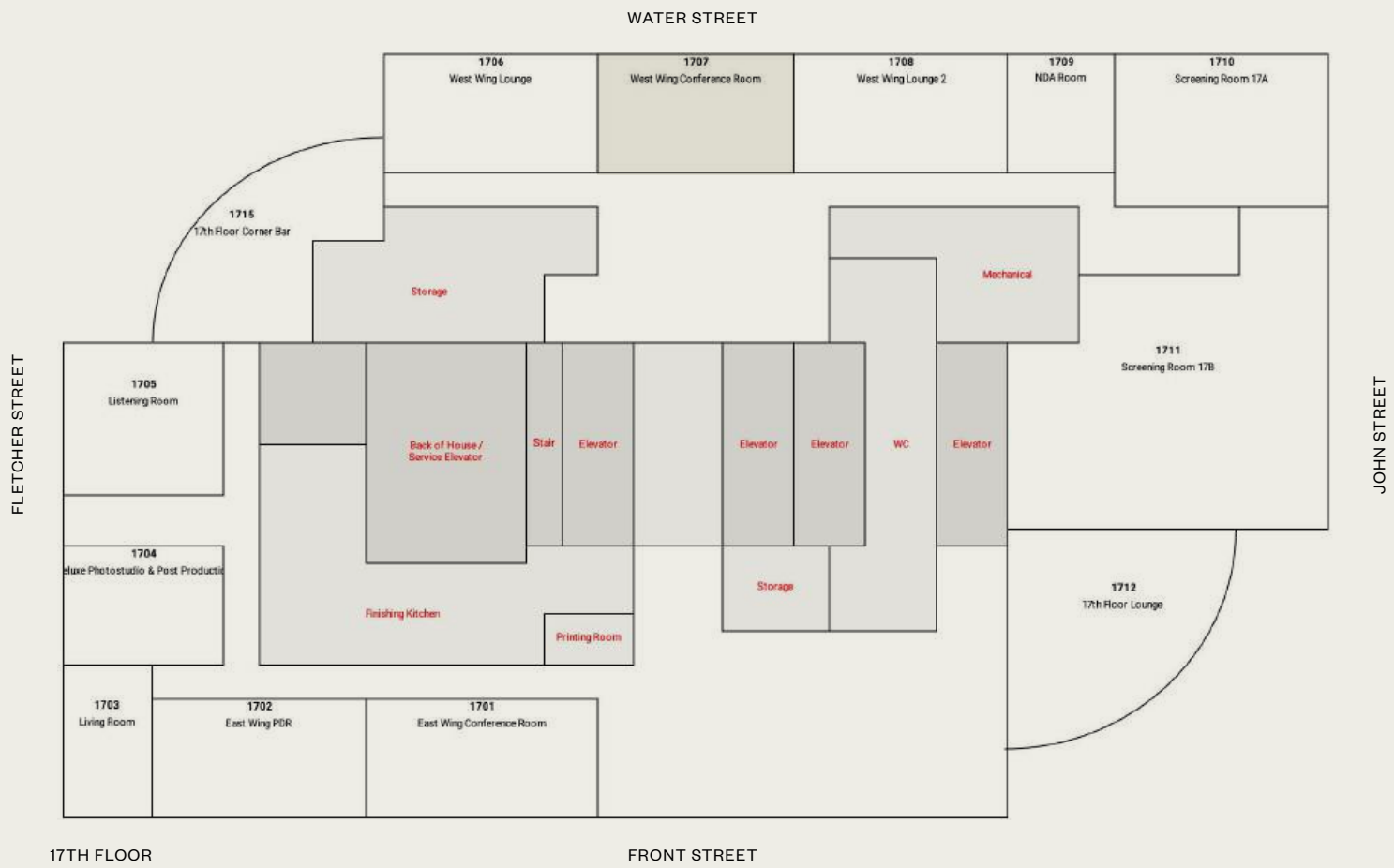
Unit Numer: 1705
Floor Number: 17
Standing Capacity: 50
Seating Capacity: 6
Square Footage: 680



WSA-1707

West Wing Conference Room

1707



Details and Information

Featuring large windows, a sleek dining area, a cozy sectional sofa, a glass coffee table, and warm wood flooring with city views.

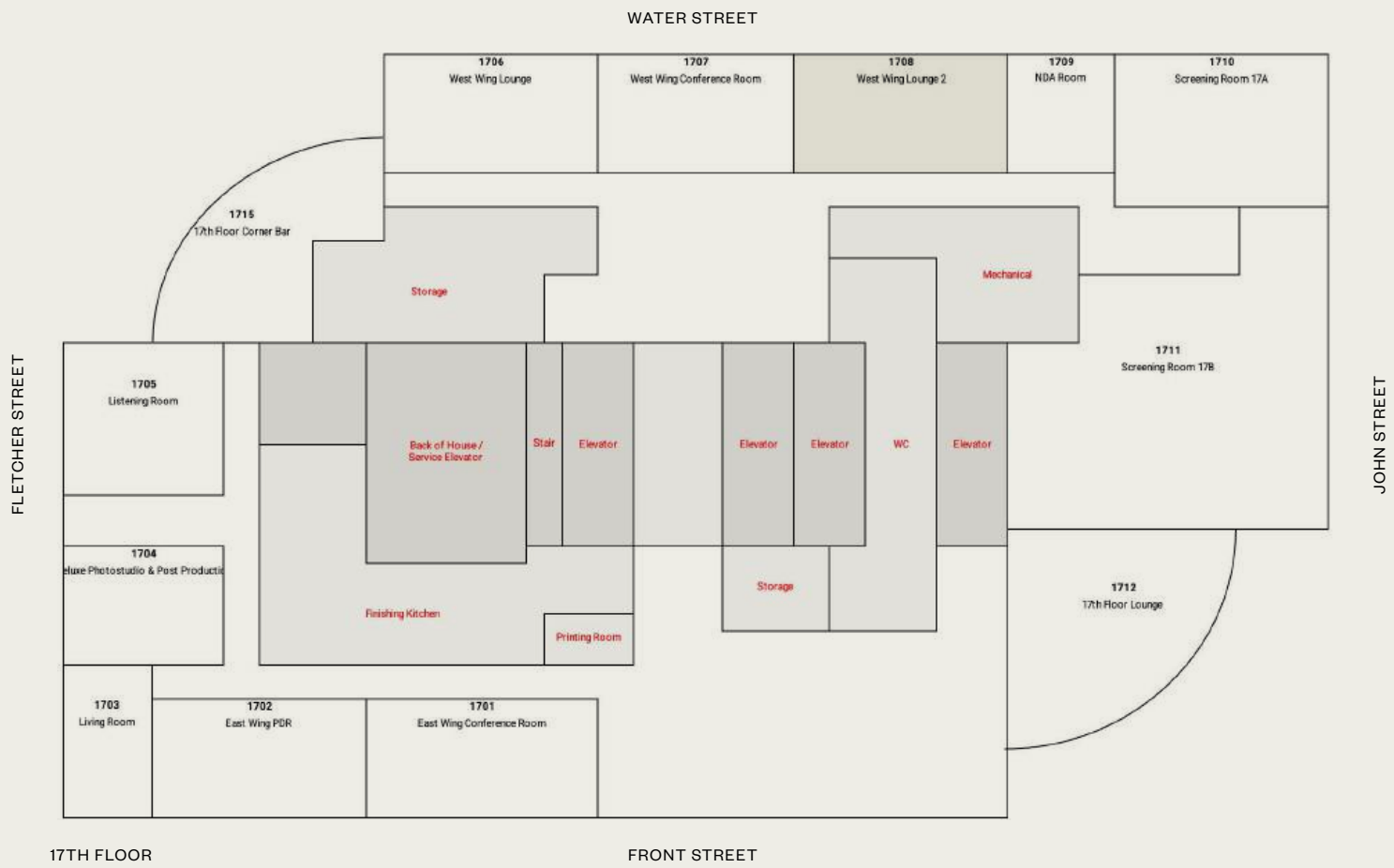
Unit Numer: 1707
Floor Number: 17
Standing Capacity: n/a
Seating Capacity: 12
Square Footage: 500



WSA-1708

West Wing Lounge 2

1708



Details and Information

This lounge showcases curved mustard-yellow sofas, a textured cream armchair, and a rich wooden coffee table. Accents include a soft area rug, complemented by a nearby bar-height seating area. The space is bright and inviting, with a mix of modern and retro influences.

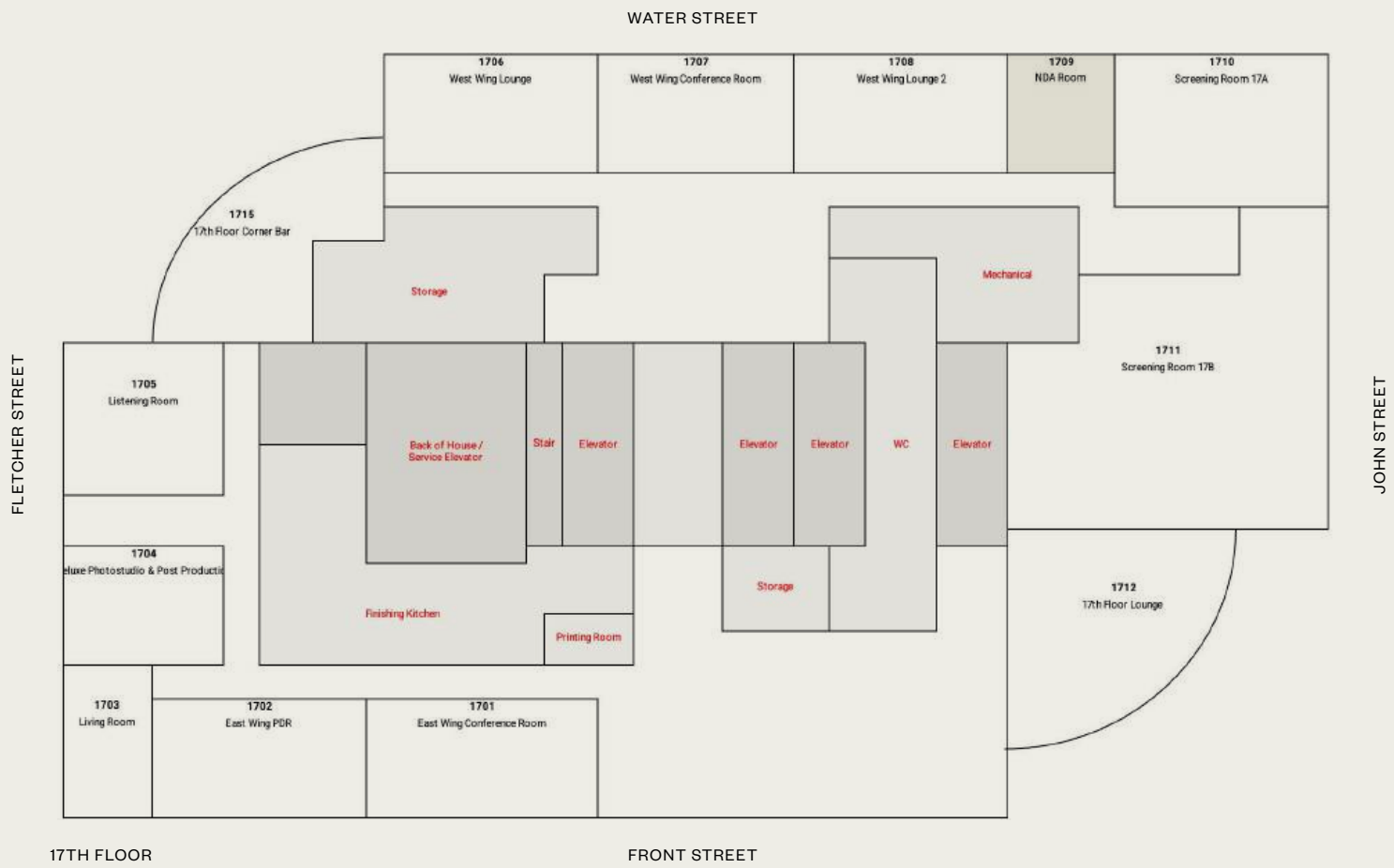
Unit Numer: 1708
Floor Number: 17
Standing Capacity: 40
Seating Capacity: 7
Square Footage: 500



WSA - 1709

NDA Room

1709



Details and Information

The NDA Room offers a private setting with warm curtains, a cream-textured sofa, and soft beige chairs. A stone coffee table anchors the space, complemented by vibrant green plants and subtle lighting for a relaxed atmosphere.

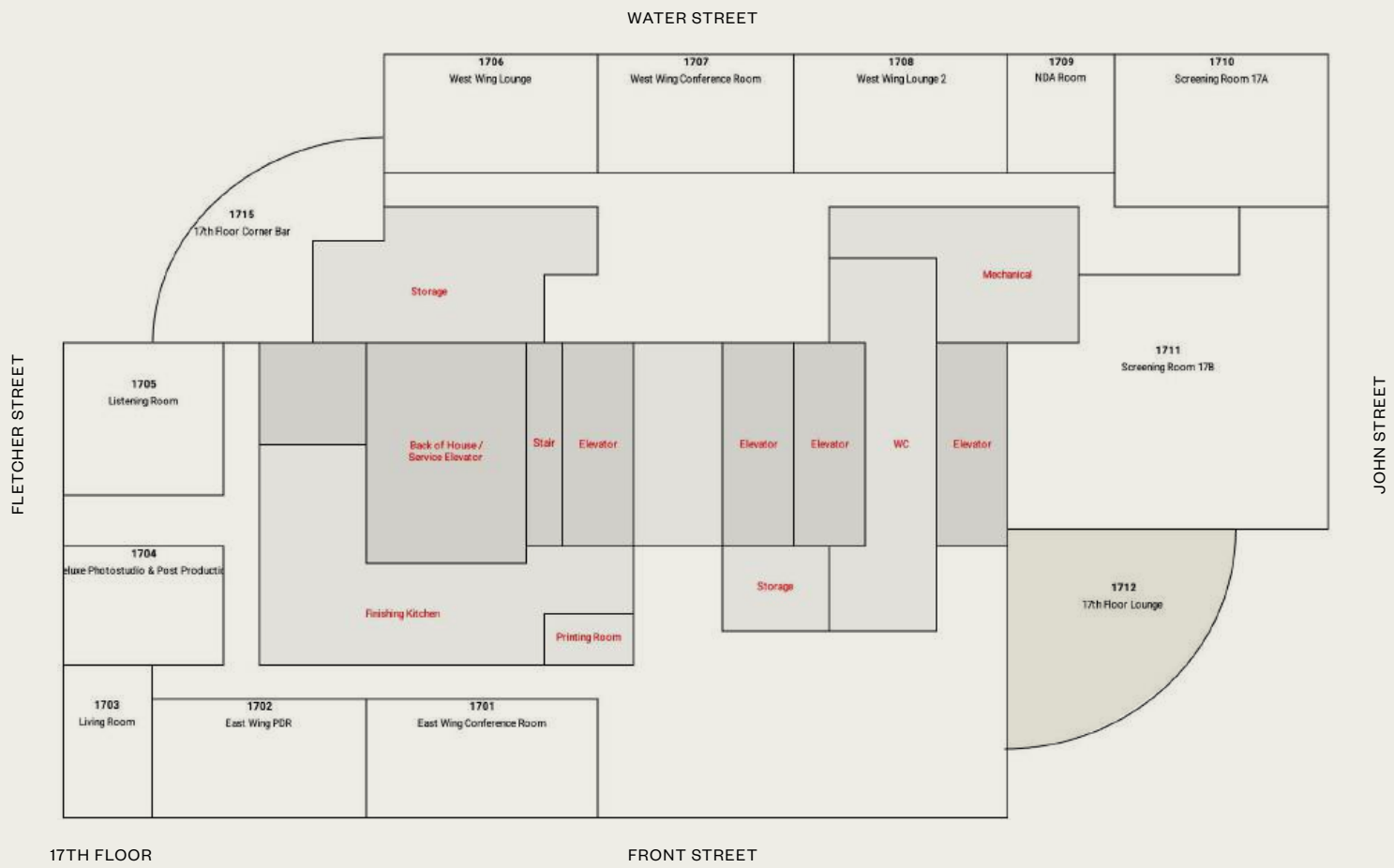
Unit Numer: 1709
Floor Number: 17
Standing Capacity: n/a
Seating Capacity: 6
Square Footage: 240



WSA - 17

17th Floor Lounge

1712



Details and Information

The 17th Floor Lounge features panoramic city and Brooklyn Bridge views through expansive curved windows. A custom sectional and matching armchairs surround a sleek glass coffee table on a dark area rug. The space is complemented by vibrant greenery, minimalist decor, and a bold art piece.

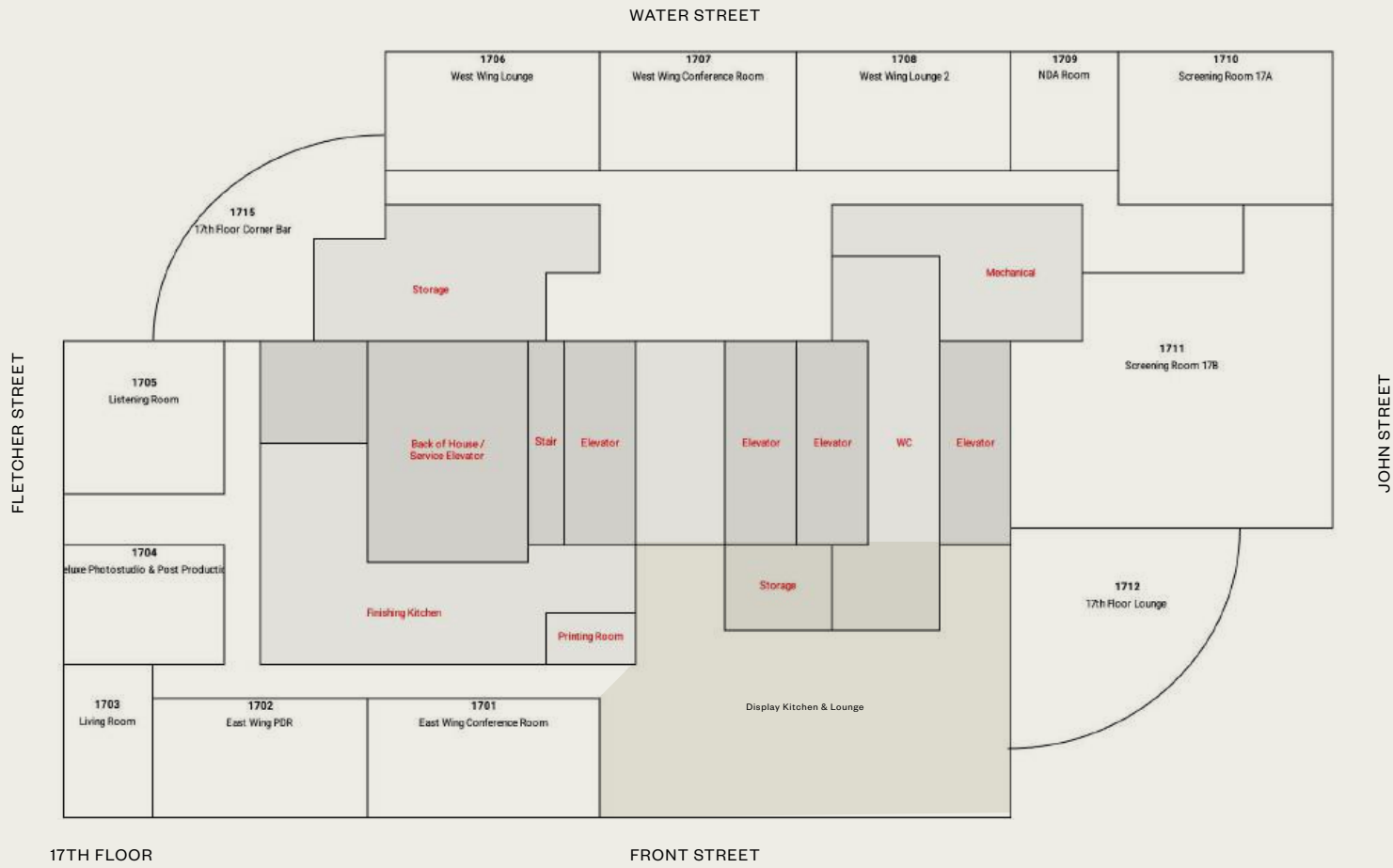
Unit Numer: 1712
Floor Number: 17
Standing Capacity: 75
Seating Capacity: 20
Square Footage: 715



WSA - 17

Display Kitchen & Lounge

1712



Details and Information

A bright, open space with floor-to-ceiling windows offering stunning Brooklyn Bridge views. The lounge area features an inviting sectional sofa in warm terracotta tones, paired with a sleek glass coffee table and lush greenery and additional tables and seating areas. Adjacent, the modern kitchen showcases stainless steel finishes, natural stone countertops, blending functionality with elegance.

Unit Numer: 1712
Floor Number: 17
Standing Capacity: n/a
Seating Capacity: 115
Square Footage: 2,280



S

Floor 18

FLOOR
18
CAR
E5

FLOOR
18
CAR
E6

FLOOR
18
CAR
E1

FLOOR
18
CAR
E2

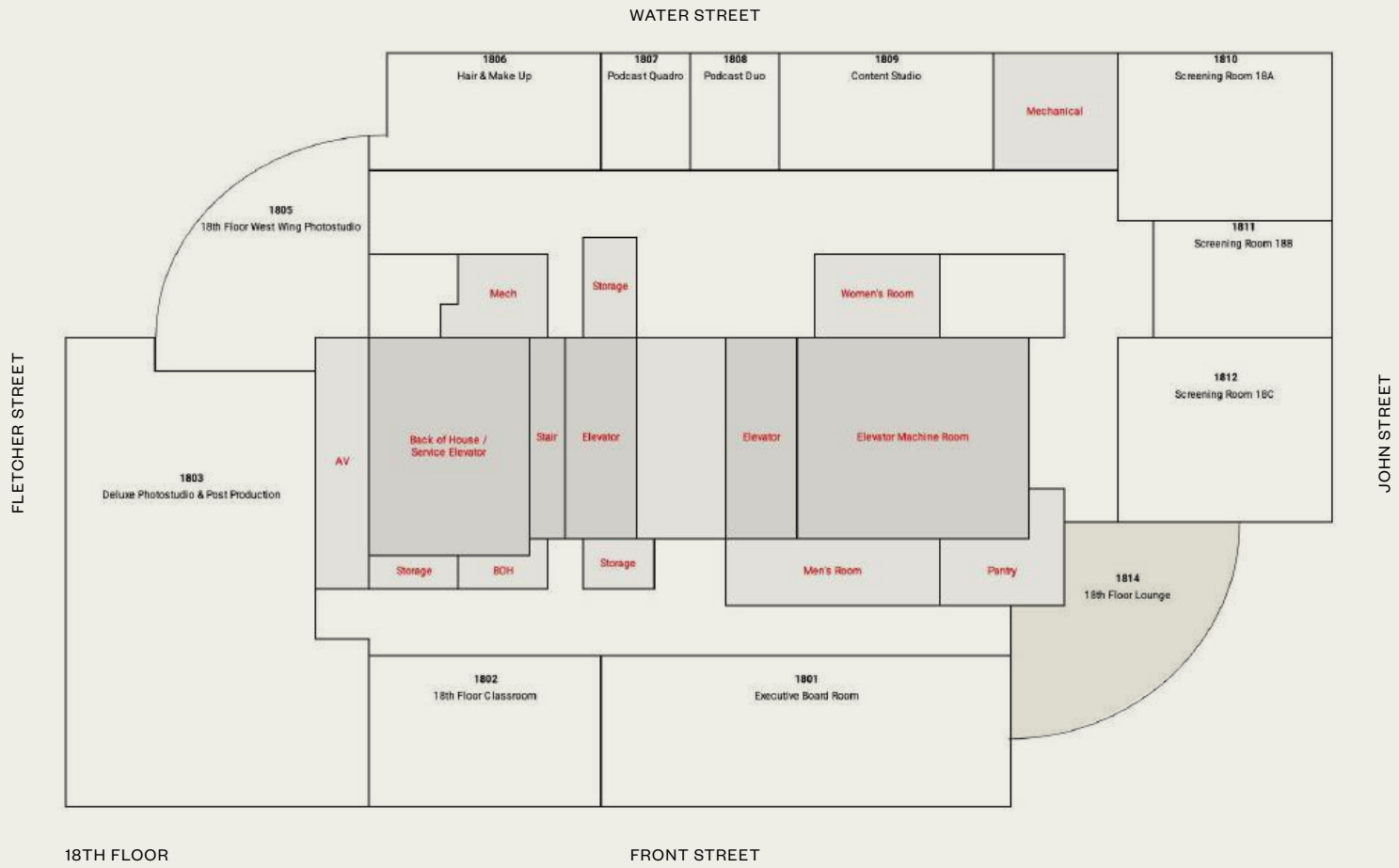




WSA - 18

18th Floor Lounge

18



Details and Information

The 18th Floor Lounge features sweeping views of the Brooklyn Bridge and city skyline through curved windows. It includes a circular seating arrangement with warm caramel-toned chairs around a glass table, complemented by a sleek black dining set. A curved bar area with minimalist stools and pendant lighting adds a sophisticated touch to the light-filled space.

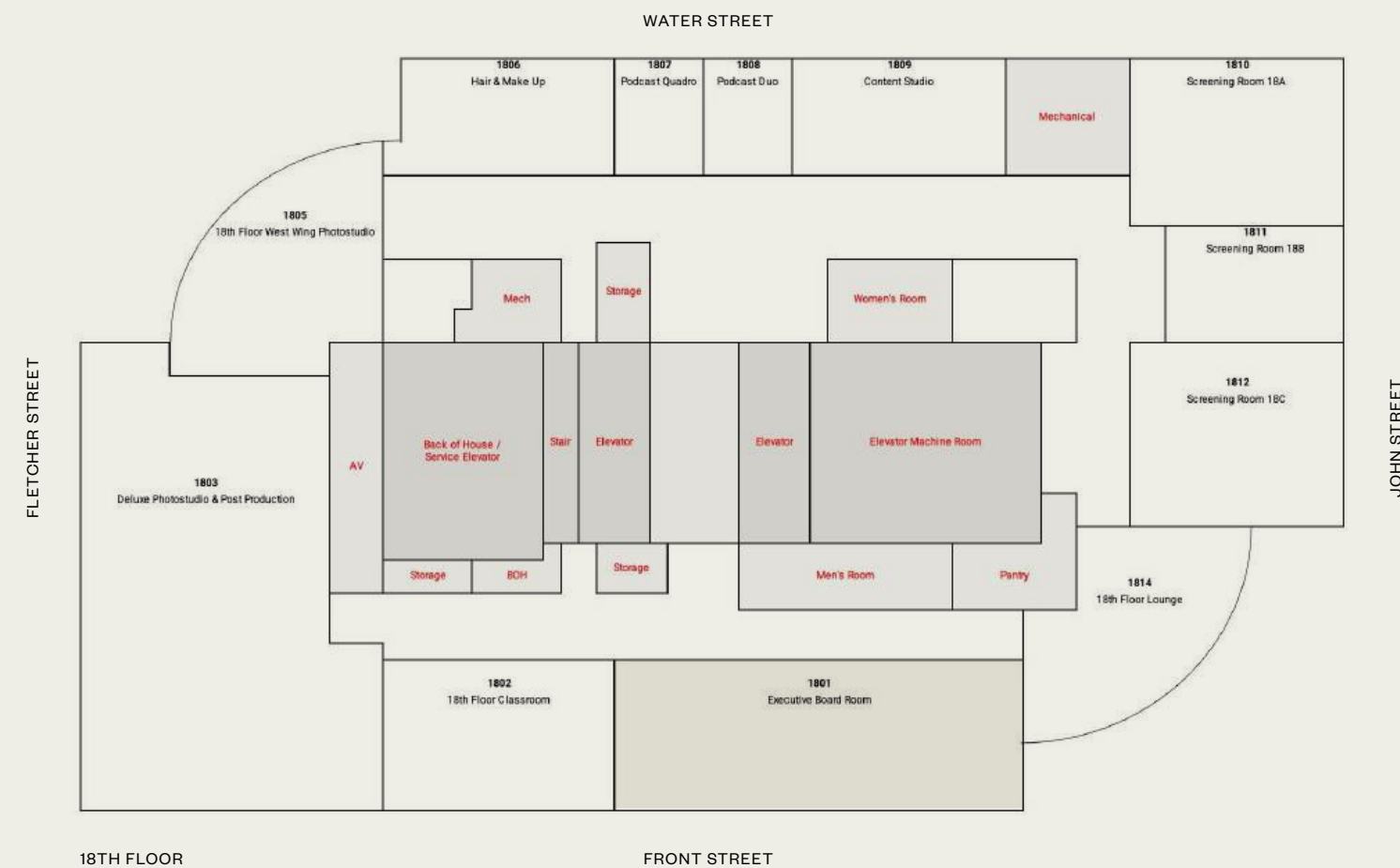
Unit Numer: 1814
Floor Number: 18
Standing Capacity: 75
Seating Capacity: 15
Square Footage: 715



WSA-1801

Executive Board Room

1801



Details and Information

The Executive Board Room features a statement conference table with plush seating anchors the space, framed by large windows offering views of the Brooklyn Bridge. The lounge area includes sleek black leather sectional and armchairs surrounding a glass coffee table on a dark area rug. Warm wood flooring and subtle greenery enhance the professional yet inviting atmosphere.

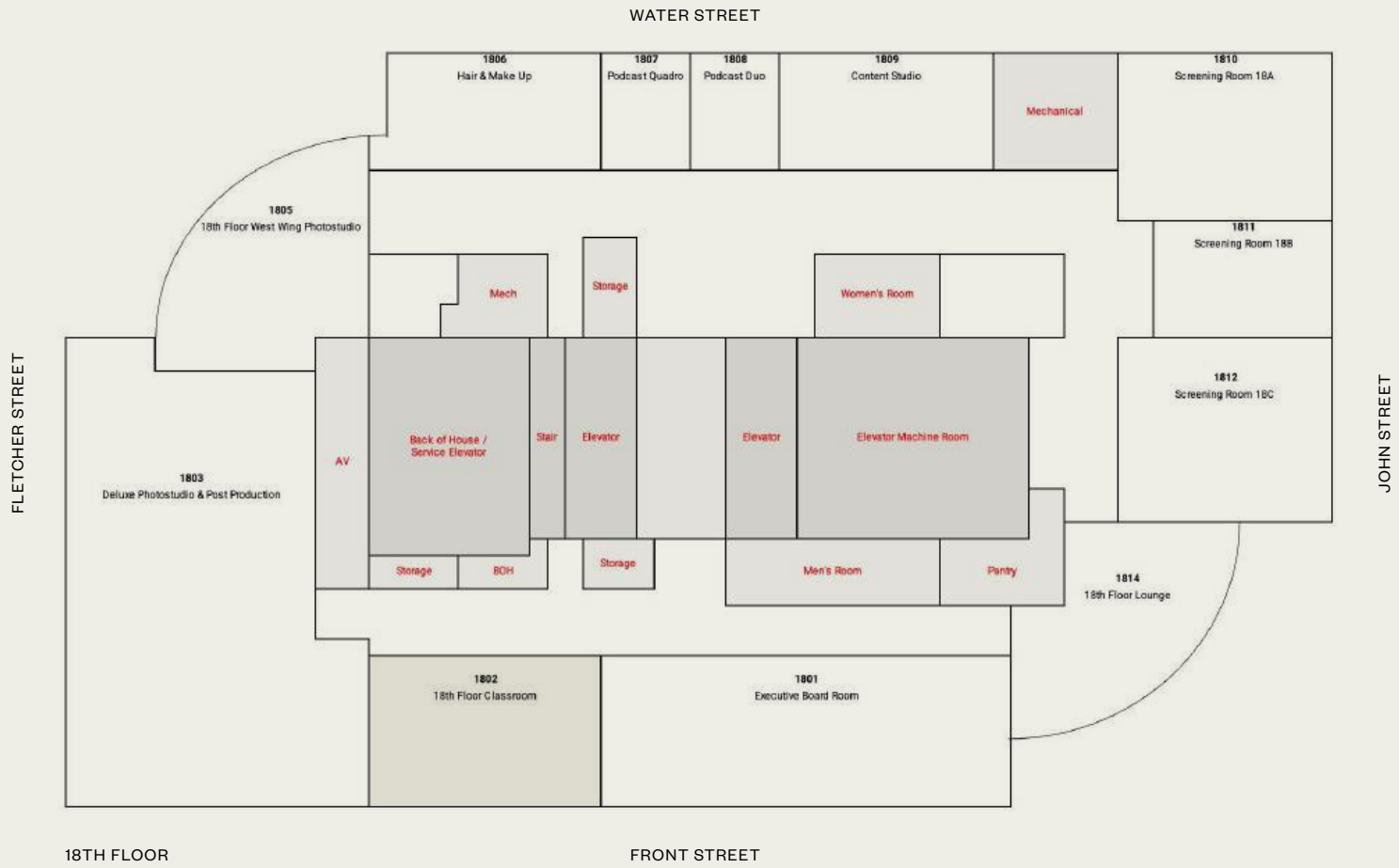
Unit Numer: 1801
Floor Number: 18
Standing Capacity: 100
Seating Capacity: 30
Square Footage: 1450



WSA - 1802

18th Floor Classroom

1802



Details and Information

The 18th Floor Classroom features rows of desks and chairs arranged for a functional layout. Large windows provide natural light and clear views of the Brooklyn Bridge. The room includes light wood flooring and simple greenery, creating a practical and welcoming atmosphere.

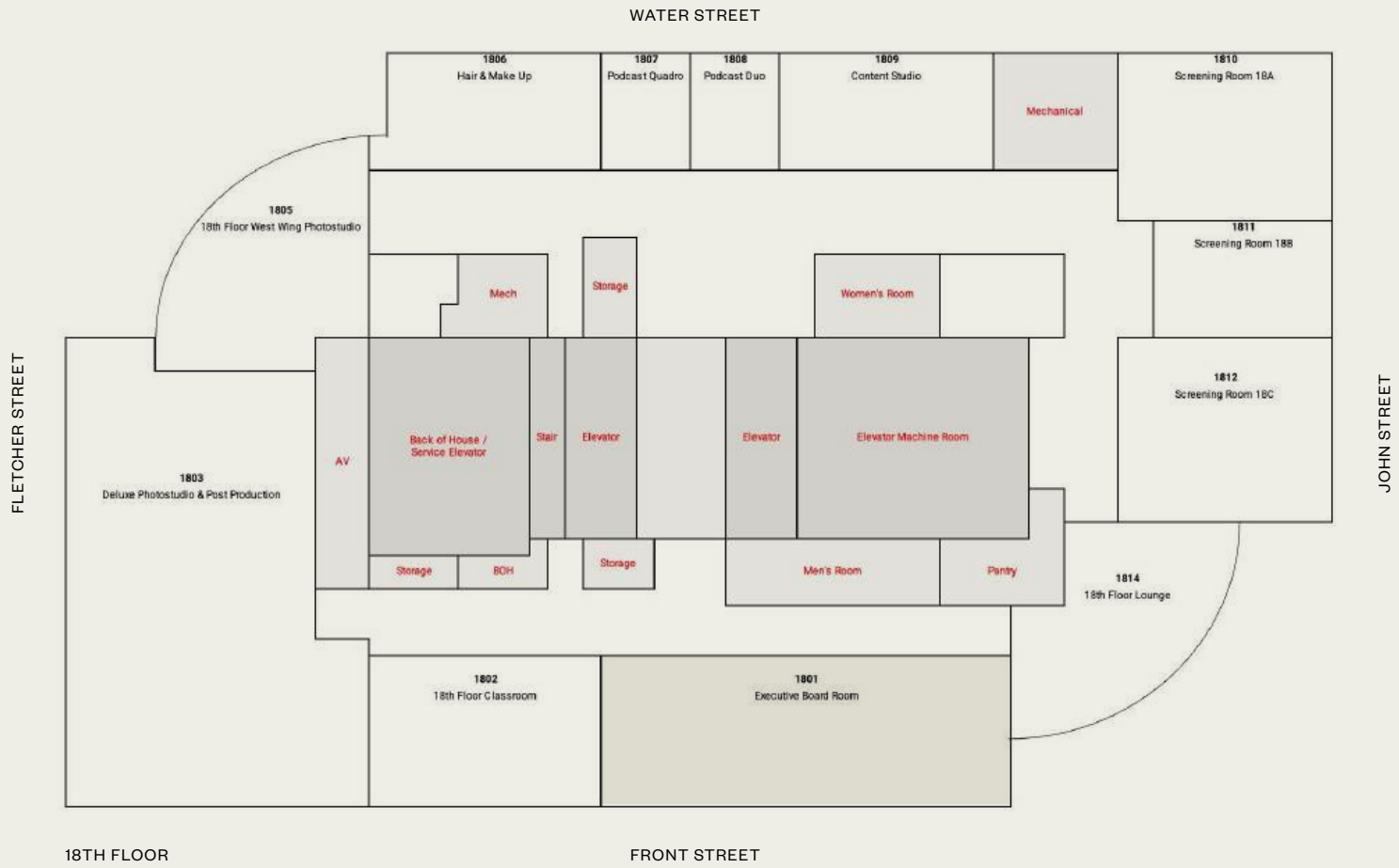
Unit Numer: 1802
Floor Number: 18
Standing Capacity: 50
Seating Capacity: 24
Square Footage: 780



WSA-1803

Deluxe Photostudio & Post Production

1803



Details and Information

The Deluxe Photo Studio features large windows with views of the Brooklyn Bridge and city skyline, wrapping around the space to maximize natural light. It includes a lounge area for comfort and two double-sided vanities for makeup and styling. The open layout provides a versatile setting for creative projects.

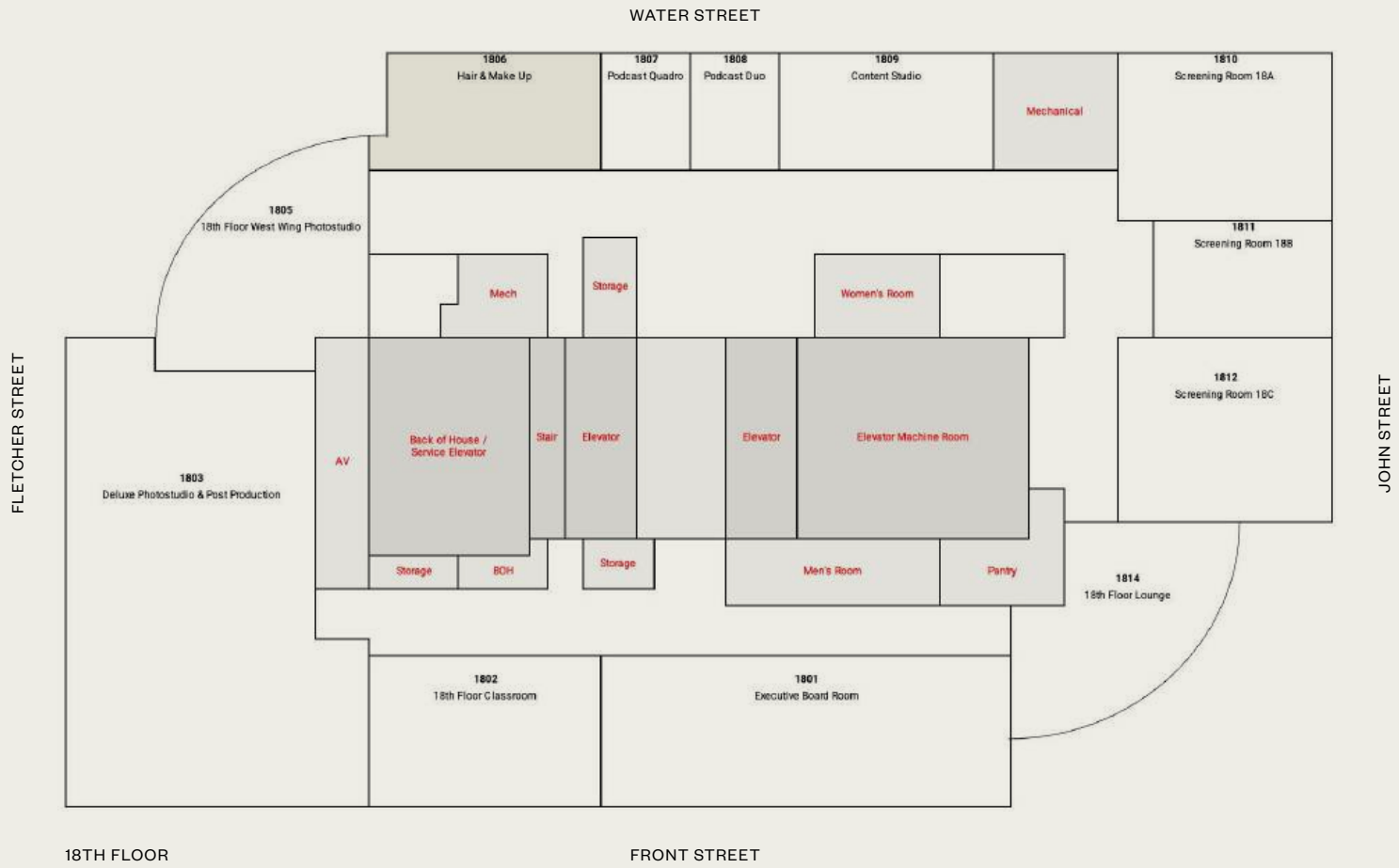
Unit Numer: 1803
Floor Number: 18
Standing Capacity: 100
Seating Capacity: n/a
Square Footage: 2740



WSA-1806

HMUU

1806



Details and Information

A spacious and well-lit area designed for versatility. It features large windows that flood the space with natural light while offering views of neighboring buildings. The room has polished concrete flooring and a built-in counter or shelving area along one wall, making it an ideal setup for customization.

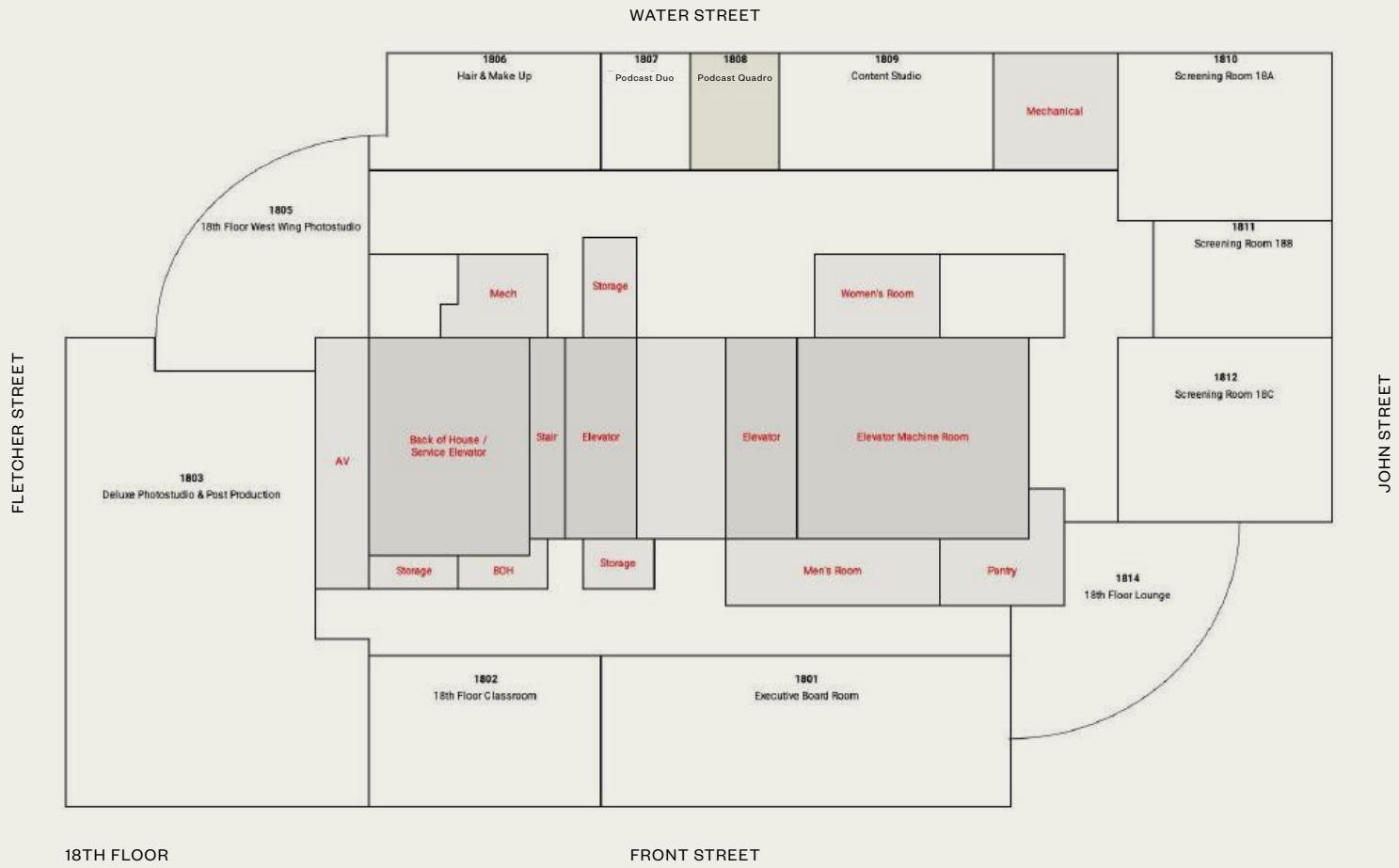
Unit Numer: 1806
Floor Number: 18
Standing Capacity: 20
Seating Capacity: n/a
Square Footage: 530



WSA - 1807

Podcast Quadro

1807



Details and Information

The Podcast Quadro Room includes four black leather chairs with microphones, a central wooden coffee table, and brown curtains for soundproofing. The room also features a production table for equipment and workflow management.

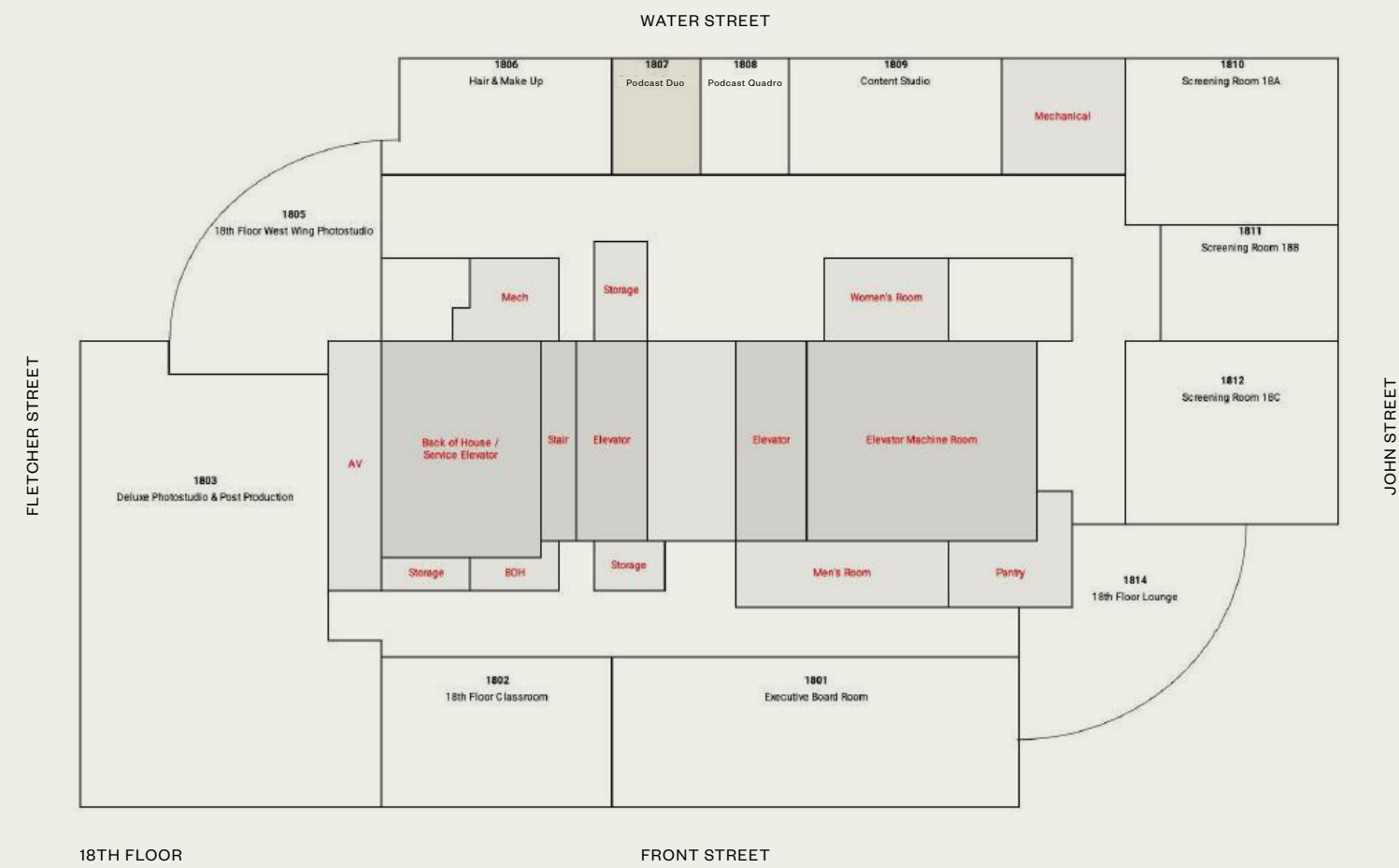
Unit Numer: 1808
Floor Number: 18
Standing Capacity: 25
Seating Capacity: 4
Square Footage: 230



WSA-1808

Podcast Duo

1808



Details and Information

The Podcast Duo Room includes two black leather chairs with microphones, a wooden coffee table, and brown curtains for soundproofing. It also features a mirrored console, greenery, and a production table for equipment setup.

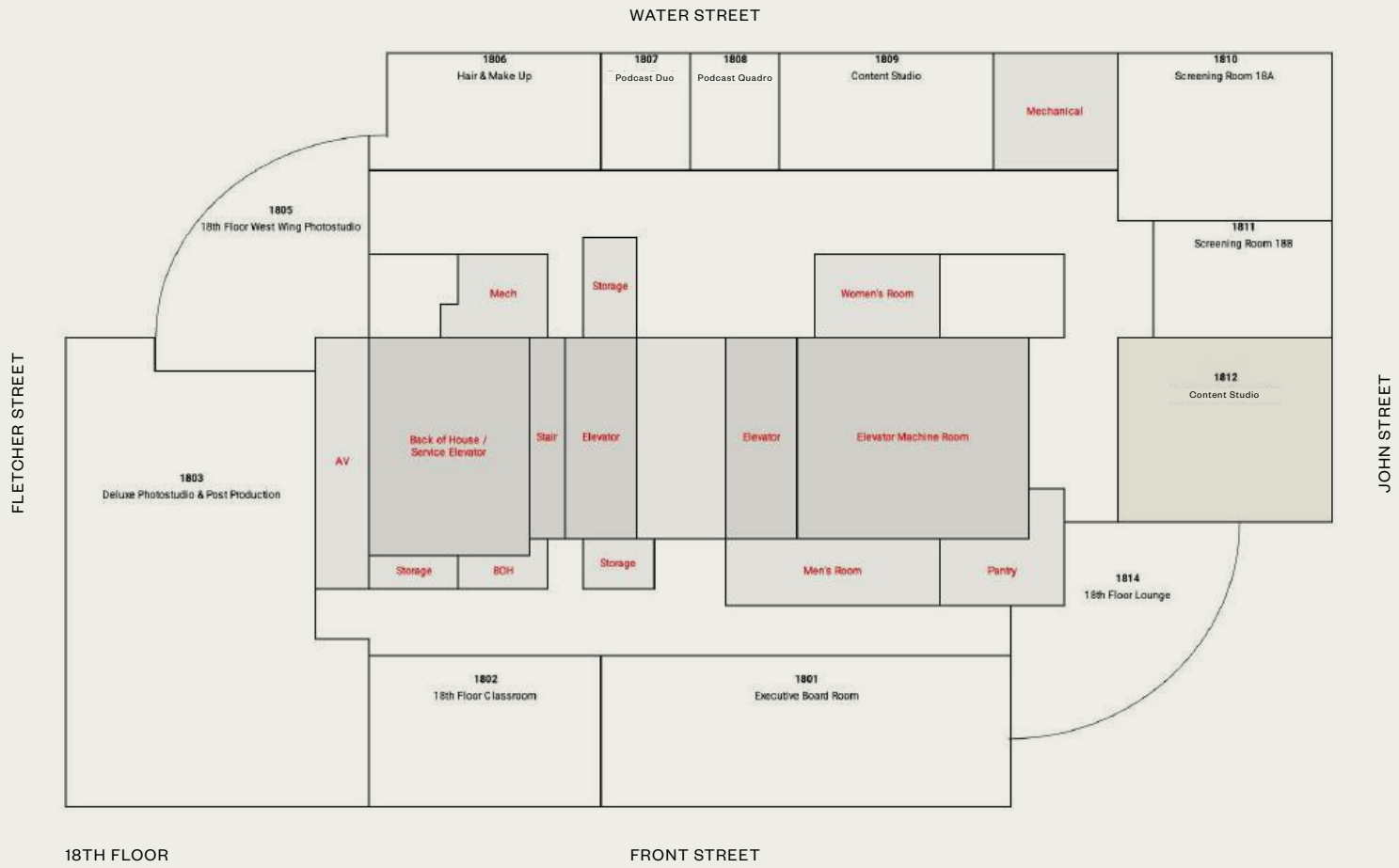
Unit Numer: 1807
Floor Number: 18
Standing Capacity: 20
Seating Capacity: 3
Square Footage: 240



WSA - 1812

Content Studio

1812



Details and Information

Another well-lit and adaptable space ideal for creative production. It features large windows along one side, providing ample natural light and views of the surrounding buildings. The room is outfitted with a warm-toned carpet. A built-in counter and shelving area on one wall enhances functionality, making it an excellent environment for content creation and studio work or customizable exhibition space.

Unit Numer: 1812
Floor Number: 18
Standing Capacity: 20
Seating Capacity: n/a
Square Footage: 510



