



Biodegradables

"We put at your disposal more than 15 years of experience in the Latin American and international market, in the location and acquisition of new products."

THE POWER OF EXCELLENCE

PLA & CPLA





Content

Our company.....	3
Materials.....	4-5
Cups.....	6-7
Lids.....	8-10
Cutlery.....	11-13
Contact information.....	14





Our company works seriously in the trade of biodegradable and compostable dishes, 100% free of plastics, aimed at restaurants, catheterization companies, retail stores and individuals. We have based the selection of our products under two important concepts: ecology, quality and design. All our items are made of all-natural materials of plant origin, from sustainable and certified crops, 100% biodegradable and compostable.

All raw materials are from renewable resources such as bamboo, maize and sugar cane (bagasse or bagasse), etc. which means that their natural regeneration rate is very fast.

Materialles

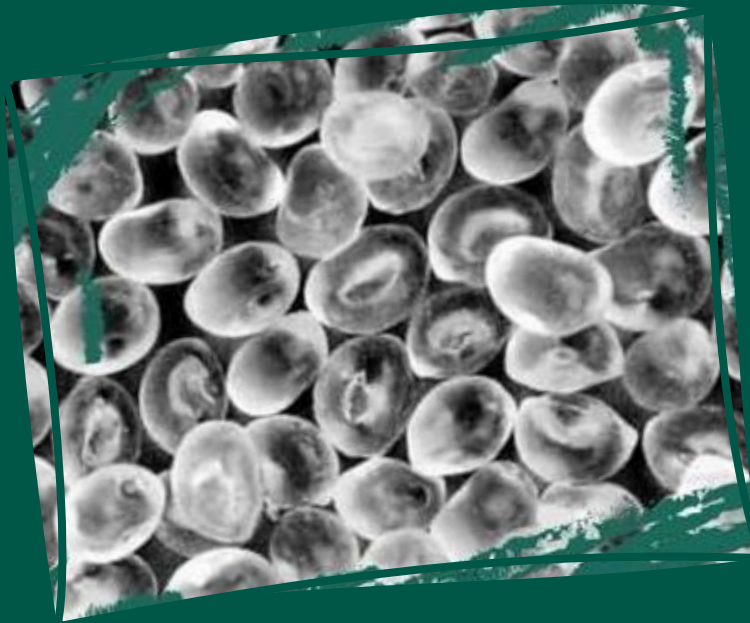
PLA



PLA is a bioplastic obtained from corn starch, potato starch or other plants. The PLA supports between -18°C and $+40^{\circ}\text{C}$ temperature, making it ideal for cold or warm meals and drinks. PLA containers, glasses and cutlery are not suitable for microwaves or ovens. It is a 100% biodegradable and compostable material. Manufactured with this ecological material we can find a wide range of products such as: pla cutlery, pla glasses, pla salts, pla jars, pla salad bowls, etc.

Material

CPLA



CPLA is a material obtained by PLA crystallization. After heat treatment, the thermal resistance of the product is greatly improved. In addition, the surface brightness is high after crystallization, has a porcelain-like effect and is currently the best material to replace melamine.

Clear Cups

MATERIAL: PLA



[Back to content](#)



CODE	DESC.	SPECIF. (mm)	PCS/ BOX	BOX/ CONT	CBM/ BOX
ECCU001	2 oz Cup	2	ΦSup: 62 ΦInf: 44 H: 30	2500	502
ECCU002	3 oz Cup	2.8	ΦSup: 62 ΦInf: 39 H: 60	2500	443
ECCU003	4 oz Cup	3.2	ΦSup: 74 ΦInf: 44 H: 30	2500	312
ECCU004	5 oz Cup	4.8	ΦSup: 74 ΦInf: 45 H: 69	1000	578
ECCU005	7 oz Cup	5.2	ΦSup: 74 ΦInf: 45 H: 88	1000	624
ECCU006	8 oz Cup	5.5	ΦSup: 78 ΦInf: 45 H: 86	1000	545
ECCU007	10 oz Cup	7.8	ΦSup: 89 ΦInf: 52 H: 88	1000	418
ECCU008	12 oz Cup	8.5	ΦSup: 90 ΦInf: 57 H: 108	1000	342

MOQ: 100 000u

Quantities are for 20ft containers.



Clear Cups



[Back to content](#)



MATERIAL: PLA



CODE	DESC.	SPECIF. (mm)	PCS/ BOX	BOX/ CONT	CBM/ BOX
ECCU009	14 oz Cup	9	ΦSup: 90 ΦInf: 56 H: 117	1000	342
ECCU010	15 oz Cup	9	ΦSup: 90 ΦInf: 57 H: 117	1000	331
ECCU011	16 oz Cup	10	ΦSup: 98 ΦInf: 62 H: 121	1000	298
ECCU012	20 oz Cup	11.5	ΦSup: 98 ΦInf: 61 H: 143	1000	254
ECCU013	24 oz Cup	12.5	ΦSup: 98 ΦInf: 61 H: 153	1000	254



MOQ: 100 000u

Quantities are for 20ft containers.



ePLA Lids

MATERIAL: CPLA /
280gsm+ 31.25g PLA
BOTTOM: double PLA + 210gsm



[Back to content](#)



CODE	DESCRIPTION	WEIGHT (g)	SPECIF. (mm)	PCS/BOX	BOX/CONT	CBM./BOX
ECCPLAL01	White Lid	2.8	Φ80mm	1000	667	0.042
ECCPLAL02		3.5	Φ90mm	1000	584	0.048
ECCPLAL03	Black Lid	2.8	Φ80mm	1000	667	0.042
ECCPLAL04		3.5	Φ90mm	1000	584	0.048
ECCPLAL05	Straw Lid	3.5	Φ90mm	1000	652	0.043
ECCPLAL06		5.8	Φ115mm	500	623	0.045

MOQ: 100 000u

Quantities are for 20ft containers.



Lids

MATERIAL: PLA



[Back to content](#)



CODE	WEIGHT (g)	SPECIF. (mm)	PCS/BOX	BOX/CONT	CBM./BOX
ECCU014	1	Φ 62mm	2500	692	0.0405
ECCU015	1.2	Φ 74mm	1000	1,034	0.0271
ECCU016	1.6	Φ 78mm	1000	881	0.0318
ECCU017	1.8	Φ 89mm	1000	787	0.0356
ECCU018	1.8	Φ 90mm	1000	787	0.0356
ECCU019	2.2	Φ 98mm	1000	675	0.0415

MOQ: 100 000u

Quantities are for 20ft containers.



Dome Lid



[Back to content](#)



MATERIAL: PLA



CODE	WEIGHT (g)	SPECIF. (mm)	PCS/BOX	BOX/CONT	CBM./BOX
ECCU020	1.8	Φ 74mm	1000	976	0.0287
ECCU021	2	Φ 78mm	1000	770	0.0364
ECCU022	2.6	Φ 89mm	1000	564	0.0497
ECCU023	2.6	Φ 90mm	1000	564	0.0497
ECCU024	2.8	Φ 98mm	1000	530	0.0529

MOQ: 100 000u

Quantities are for 20ft containers.



CPLA: Cutlery



[Back to content](#)



MATERIAL: CPLA



CODE	DESCRIPTION	SPECIF. (cm)	SET/ BOX	BOX/ CONT	CBM./ BOX
ECPLASC01	6" CPLA cutlery set with tissue paper Packed by PLA bags	Spoon Knife Fork Tissue 30 x 30	500	374	0.075
ECPLASC02		Knife Fork Tissue 30 x 30	500	431	0.065
ECPLASC03	7" CPLA cutlery set with tissue paper Packed by PLA bags	Spoon Knife Fork Tissue 30 x 30	500	330	0.085
ECPLASC04		Knife Fork Tissue 30 x 30	500	374	0.075

MOQ: 100 BOX

Quantities are for 20ft containers.



CPLA: Cutlery



[Back to content](#)



MATERIAL: CPLA



CODE	DESCRIPTION	SPECIF. (cm)	SET/ BOX	BOX/ CONT	CBM./ BOX
ECPLASC05	6" CPLA cutlery set with tissue paper Packed by Craft paper bags	Spoon Knife Fork Tissue 30 x 30	500	364	0.077
ECPLASC06		Knife Fork Tissue 30 x 30	500	312	0.090
ECPLASC07	7" CPLA cutlery set with tissue paper Packed by Craft paper bags	Spoon Knife Fork Tissue 30 x 30	500	364	0.077
ECPLASC08		Knife Fork Tissue 30 x 30	500	312	0.090

MOQ: 100 BOX

Quantities are for 20ft containers.



Cutlery



[Back to content](#)



MATERIAL: CPLA



CODE	DESCRIPTION	SPECIF. (cm)	PCS/BAG	BAG/BOX	BOX/CONT	CBM./BOX
ECPLAC01	Fork	L: 85 mm	50	20	3,112	0.009
ECPLAC02	Spoon 5"	L: 127 mm	50	20	2,800	0.010
ECPLAC03	Spoon 6"	L: 150 mm	50	20	2,154	0.013
ECPLAC04	Fork 6"	L: 145 mm	50	20	2,800	0.010
ECPLAC05	Knife 6"	L: 158 mm	50	20	2,800	0.010
ECPLAC06	Spoon 7"	L: 160 mm	50	20	1,750	0.016
ECPLAC07	Fork 7"	L: 170 mm	50	20	1,750	0.016
ECPLAC08	Knife 7"	L: 180 mm	50	20	2,546	0.011

MOQ: 100,000 u

Quantities are for 20ft containers.



Contact information

Caribbean-Consultancy & Trade, LLC

ECN324791872233264 EIN81-4254364

1100 Summer St, Apt 12, Palm Springs,
Florida, United States. 33461

Phone Number: +1 561 517 8097
Cellphone: +1 561 692 5622

gerencia@caribbean-ct.com
info@caribbean-ct.com | ventas@caribbean-ct.com

www.caribbean-ct.net