

# ROCK TALK



White Mountain Gem & Mineral Club  
P.O. Box 3504  
Show Low, Arizona 85902  
[www.whitemountain-azrockclub.org](http://www.whitemountain-azrockclub.org)  
[whitemtngmc@gmail.com](mailto:whitemtngmc@gmail.com)

Vol. 28, Issue 9  
September 2024

## PRESIDENT'S LETTER

**I**t was perfect day for a picnic! So many members and such great food. We do have a lot of good cooks in our club. Thank you everyone for sharing. Lots of socializing going on too. A good time was had by all.

Thanks for joining us, Christie. We hope to see you again. Thank you Ursula for bringing your amazing treasures from Lee Russell Canyon. Crystals just seem to jump off the ground at Ursula, so if that's your passion, hang with her on the field trips.

And if you like homemade cookies, join us for the highway clean-up on September 14. The more the merrier, and yummy cookies afterwards.

For those who want to join in on the show debrief, we are meeting after the highway clean up at the Tall Pines Clubhouse. Bring your lunch, the discussion begins at noon. Contact Cathy for details. (See Page 7 in *Rock Talk*.)

Our upcoming field trip starts with a visit to the Payson Rimstones' show. Let's support our neighboring club's event.

White Mountain Symphony Orchestra fans, our first concert of the season is September 28, 3:00 PM at Blue Ridge Auditorium. I have five half-price musician tickets available. First come first served. This concert honors our first responders and military personnel.

Trivia - Made of silicate hydroxide, serpentine has a mottled surface that reminds people of snakeskin, especially when it takes on a greasy sheen when freshly exposed. Found in highly altered metamorphic zones, this zombie invades other minerals and changes their structures. A favorite victim is olivine.

A very busy but fun month for us. I look forward to seeing you at all or some of these activities. Enjoy the cooler weather.

Sandra

## TREASURER'S REPORT

### Expense for August

Donation, Apache Creek Youth  
Newsletter  
Outstanding Show Expense

### Upcoming Expense

Newsletter  
Remaining Show Expense  
Return, Pavilion Rental Deposit

### Income This Month

Memberships

# BULLETIN BOARD

**"That old September feeling, left over from school days, summer passing, vacation done...books and football in the air." (Wallace Stagner)**

***Happy September Birthday***

**Carol Glick  
Terry Pollard  
Michael Sonadelle  
Aimee Webster**

**Why not join our  
*Let's Do Lunch Club***

**Where: Monica's Cafe  
1100 Hall E.  
Show Low**

**When: Thursday, September 26  
12:00 noon**

***Let's Celebrate our  
September Birthdays!!***

## IN THIS ISSUE

ITEM	PAGE
President's Letter/ Treasurer's Report	1
Notes of Interest/ Important Reminders	2
Club Information	3
Minutes of September Meeting/ Did You Know?	4
September Field Trip	5
Report on August Field Trip	6
Planning Session for 2025 Show	7
Did You Know-Artists Among Us	8
Rock of the Month	9
<b>ADDITIONAL PAGES</b>	
Rock Cycle	10
Picnic in the Park Photos	11

**T**he Melon Community Center in Concho is planning a "mini gem show," possibly set on a Saturday in March and will include learning activities for children, rock samples, and items for sale. Contributions for this event might include small rock samples, tumbled polished rocks, and a game or learning activity. Sale items might include inexpensive jewelry, rock and crystal specimens, and other items. We will discuss and vote on the idea at the October meeting.



**It's Highway  
Cleanup Time Again!  
Saturday, September 14  
Meet at the Show Low  
Chamber of Commerce at 9:00 AM.  
The State provides vests, pickup  
sticks, and bags. Bring good walking  
shoes, sun protection, and gloves.  
Brookie brings her famous  
cookies!**

## Rock Talk Newsletter

Our newsletter is published monthly by the White Mountain Gem & Mineral Club, Inc. Any information or comments members wish to include in the monthly newsletter must be given to the editor at the general membership meeting or call the editor no later than Tuesday following the meeting.

## Membership Dues

Membership dues are \$20 for a single membership and \$25 for a couple/family. (\$5 less if you receive newsletter by email.) Dues are paid in January each year along with a completed application form. Memberships initiated in November or later in a given year are also good for the following year.

## Meetings

We meet the first Sunday of the month (unless it falls on a holiday) at the VFW Post 9907, 381 North Central Avenue in Show Low. Turn north off the Deuce of Clubs at Burger King. Social half hour at 1:00 PM, meeting starts at 1:30 PM.

## ELECTED OFFICERS

<b>Office</b>	<b>Name</b>	<b>Phone</b>	<b>E-Mail</b>
<b>PRESIDENT</b>	Sandra Angelo	(928)537-3726	sandra_angelo@hotmail.com
<b>VICE PRESIDENT</b>	Debbie Christmas	(602)475-4714	Deb_xmas@yahoo.com
<b>2ND VICE PRESIDENT</b>	Carol Glick	(928)228-6202	malcarglick@yahoo.com
<b>SECRETARY</b>	Shelly Applegate	(928)245-4300	shellylynn@gmail.com
<b>TREASURER</b>	Kim Whitley	(928)853-4455	kimwhitley@gmail.com
<b>EDITOR</b>	B.G. Hogarth	(928)532-3043 Cell-(775)397-2312	hogarths@citlink.net
<b>FIELD TRIPS</b>	Dick Turpin	(480)240-0995	
	Rick Palmer	(928)333-5019	palmer57@frontiernet.net

## Members at Large

Dick Turpin	(480)240-0995
Terry Pollard	(480)431-0686
Ursula Wilson	(928)532-5703

## Volunteer Positions

<b>Webmaster/Coalition Chair</b>	Aimee Webster	(602)503-8417	afwebster61@gmail.com
<b>Show Chairman</b>	Cathy Cargile	(714)348-9162	skyranch5734@yahoo.com
<b>Assistant Show Chairman</b>	Ursula Wilson	(928)532-5703	
<b>Sunshine</b>	Donna Pollard	480-600-2714	tdpollard@msn.com
<b>Education, Schools</b>	Open		
<b>Greeter/Door Prizes/Raffle</b>	Thelma Gray/Diane Moten		
<b>Auctioneer</b>	Donna and Terry Pollard		
<b>Highway Cleanup</b>	Brookie/ Larry Embry	(928)537-0760	
<b>Bonus Prizes</b>	Sandra Angelo	(928)537-3726	
<b>Historian</b>	Donna Pollard	(480)600-2714	tdpollard@msn.com
<b>Librarian</b>	Rick Palmer	(928)333-5019	palmer57@frontiernet.net
<b>Meeting Room Setup/cleanup</b>	Shelly Applegate	(928)245-4300	shellylynn@gmail.com

## Chamber of Commerce Liaisons

Show Low: B.G. Hogarth

Snowflake/Taylor: Open

Springerville/Eager: Rick Palmer

Heber/Overgaard: Aimee Webster



# WHITE MOUNTAIN GEM & MINERAL CLUB

## MEETING MINUTES SEPTEMBER 1, 2024

**T**he meeting was called to order by President Sandra Angelo at 12:20 PM with the Pledge of Allegiance.

For Show and Tell, Sandra mentioned that September 1 is officially "Pet Rock Day," a fad that began in 1975. Smooth river stones would be decorated and thus become "pets." Ursula showed quartz crystals from Lee Russel Canyon.

See Page 1 in **Rock Talk** for Treasurer's Report.

Dick Turpin reported on the August field trip to Apache Creek and the September 21 trip planned for the Payson Rimstones Show and then to the Indian Gardens Paleo Site. (See Page 5 in **Rock Talk** for details on the September trip, and Page 6 for a report on the August trip.)

Brookie Embry provided details on the upcoming club's participation in cleaning up their allotted mile in the state's "Adopt-a-Highway" program. (See Page 2 in **Rock Talk**.)

Show Chair Cathy Cargile suggested a "get-together" after the highway cleanup for club members to evaluate the 2024 show and with suggestions for next year's show. (See Page 7 in **Rock Talk** for more information.)

Hope Rubi mentioned that the "Let's Do Lunch" get-together will happen on Thursdays from now on.

Caitlin surprised herself by drawing her own name for a door prize. Mike Sonadelle also won a door prize.

There being no further business to discuss, the meeting was adjourned so that the picnic could begin!

Respectfully submitted,

Shelly Applegate, Secretary



**DID YOU KNOW . . .** **SEPTEMBER 16, 2024**  
**NATIONAL COLLECT ROCKS DAY!**

**C**OLLECT ROCKS DAY is September 16. This day allows us to have a nice day out but also learn more about the planet we inhabit and how it's formed.

The history of Collect Rocks Day can be traced back to two main subjects:

1. the history of our home—Earth, and
2. the history of the science that studies the solids, liquids, and gases that constitute our planet—geology.

Humanity has always been curious about how rocks are formed. Ancient civilizations would find explanations based more on superstition than scientific rigor.

Advances in geology have been so great that humans not only study the formation of rocks on Earth but on other celestial bodies as well, such as the moon. Geology has contributed a body of knowledge that helps us understand the planet we inhabit and the effects that our activities have on it.





# SEPTEMBER FIELD TRIP

## RIMSTONE CLUB ROCK SALE

### AND INDIAN GARDEN PALEO SITE

**Field Trip Leader:** Dick Turpin 480-240-0995

**Date:** Saturday, September 21, 2024

**Location:** The first stop will be at the Mazatzal Casino in Payson for the Rimstone Rock Show for about 1.5 hours. The second stop will be at the Indian Gardens Paleo Site on Route 260 about 16 miles east of Payson.

**Where and When We Will Meet:** The meeting point will be the Show Low Chamber of Commerce parking lot on Deuce of Clubs at 7:15 AM.

**Recommended Vehicle:** Any vehicle can make it to the Casino and the Paleo Site. This is one of the few field trips where we don't leave a paved surface.

**What we will collect:** We will be collecting marine fossils at the Paleo Site. The majority of the fossils are brachiopods, but shark teeth have been found, as well as a few trilobites.

**Recommended Things to Take:** Small collecting containers, rock hammer, grabber, digging tools, water, lunch, sunscreen. One additional tool that could prove helpful is a screen with openings of at least a quarter-inch. A 3/8-inch mesh screen would also work; however, a half-inch mesh will allow some of the smaller fossils to pass through.

**Cell Phone Service:** Both sites should have good cell phone service.

**Directions to the Sites:** From Show Low drive west on Highway 260 approximately 90 miles to Payson. Turn left toward Phoenix on Route 87. Drive about two miles to the casino on the left.

To get to the Paleo Site drive back through Payson to Route 260 and go 16 miles east. There is a sign marking the site on the right, but the highway exit is on a steep downgrade and around a curve. It comes up quickly so keep a sharp lookout. If you miss the turn keep going about a mile and take the next left turn into the Tonto Recreation Area, turn back, and cross the highway on a paved crossover to the Paleo Site. There is a large paved parking area at the end of the exit ramp.

**Reference YouTube Videos:**

- o Benjamin Mohler, Naco Expedition 2024, June 5
- o Elley Knows Rocks, 300 million Year Old Fossils Indian Gardens Paleo Site



# AGATES GALORE AT APACHE CREEK!

(AKA LEE RUSSEL CANYON)

By  
Dick Turpin

Photos by  
Dick Turpin  
and Donna Pollard



On August 17 about 20 club members climbed out of bed early to join an exciting field trip to New Mexico in search of an amazing agate site known as Apache Creek. The 125-mile drive turned out to be well worth the effort.

Thanks to Rollo Pool our club obtained permission to cross the Apache Creek School for the Deaf property so that we could make the three-mile climb up a steep and muddy mountain where we were rewarded with agates of abundant quantity and quality. Like Luna Blue agates, the stones ranged from white to gray to dark blue, almost black. Many included open pockets lined with quartz and drusy crystals.

Finding the beautiful specimens was never a problem. Almost immediately after we jumped out of our vehicles the sound of rocks hitting plastic buckets could be heard echoing through the valley. At times it seemed like the ground was paved with agates. The challenge was deciding which ones were worth taking home. One factor that improved the collecting was the huge monsoon that had passed through the area the prior evening. This hard rain served to wash fresh material out of the soil. Rollo called this kind of rockhounding "shooting agates in a barrel."

A half dozen folks from the Payson Rimstone Club joined our White Mountain club on the adventure. When we arrived at the school we were greeted by Reverend Craig and Debbie who had just completed repairs to the entrance road that had been breached the night before by the swollen Apache Creek. As our club has done on previous visits, we left a donation to help support the important work that the school provides.



# INVITATION TO ALL CLUB MEMBERS!!!

## GEM SHOW 2024 ROUND-UP AND PLANNING FOR 2025 SHOW

**SAVE THE DATE:**

**SATURDAY SEPTEMBER 14**  
**12:00 PM – 2:00 PM**

**LOCATION:**

**TALL PINES RV CLUBHOUSE**  
**SHOW LOW**

### DIRECTIONS:

From White Mountain Blvd take Show Low Lake Rd between Summit Hospital and Walmart. Proceed past the medical offices and just after the empty field, turn left on 28th and go past Waltner's RV Park to the church and turn right on Tall Pine Road. You will see the Tall Pines RV Resort mailboxes and sign on the left, turn left into Tall Pines RV Resort. Drive five miles per hour slowly, downhill toward the lake. Before the lake you will see the clubhouse on the right. Park considerately to make room for all our cars in front of the clubhouse.

### DATE

Saturday, September 14

### TIME

Arrive between 11:30 and 12 noon. Meeting starts at noon we must be out of the clubhouse by 2:30 at the latest.

### BRING

Your own lunch and drink PLUS your ideas for improving our show next year.

### DRESS

Come as you are, very casual is fine. We know some of you will be at the highway clean up before coming to this meeting.

### AGENDA

We will begin the meeting with the financial details of the 2024 show and a discussion and listing of what could have been done better and then proceed into the planning for the 2025 show.

### WHO SHOULD ATTEND

Those of you who are board members and the dedicated volunteers who worked for many hours before, during and after the show to create our show are urged and requested to PLEASE attend. We hope that those of you who wish to give your input on 2024 and suggestions for 2025 will join us, even if you are new to the club. All members are welcome!

To confirm your attendance or for more information please text or call 714-348-9162.

Looking forward to seeing you on Saturday September 14.

Cathy Cargile

2024 Show Chair



# DID YOU KNOW . . . . THAT OUR CLUB HAS SOME VERY TALENTED ARTISTS?

At our recent picnic meeting, your editor was privileged to be sitting at a table with two of them, Mary Johnson and Myra Pierce Rees. Myra is the owner of Weft Handed Studios and bills herself as an "artist in mixed media, paper, textiles, jewelry and watercolor." She also once owned the largest antique store in Tucson.

Mary is also an exceptional artist, using her creative talents into many different areas.

What caught my attention, as I was munching down on picnic food, was watching Mary working with a denim something, and making fringe with what looked like some kind of hook. My curiosity aroused, I had to ask what she was doing. Basically, she was making lovely shoulder bags out of old denim trousers. She shops the thrift stores when they have "full bag specials," fills the bags with all colors and sizes of denim trousers that are still in good condition and turns them into lovely purses. Her shoulder bags have lots of pockets (a necessity for any woman!) and each purse is uniquely decorated. And, of course, they are fully washable.

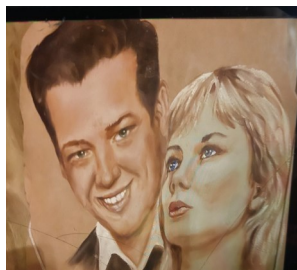
Both Mary and Myra work with sandstone. It can be easily painted, and one can even draw on it.

Myra had a beautiful piece of sandstone with swirls of orange and tan. She could see in her mind a silk scarf with that same design on it. She first wetted the stone down completely to get the full sense of the color and design. She then used silk dye in an atomizer to spray the different tints onto a white scarf. Then, in her words, she "squished" it all together, rinsed it, and then ironed the scarf till it was dry. It turned out beautiful!

You also might remember Myra as the creator of an amazing multi-tiered necklace that she wore to one of our meetings and also put on display at our show.

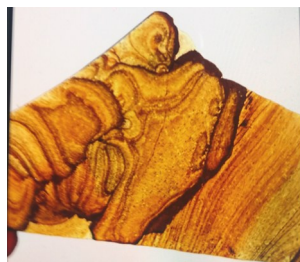
Both ladies would like to invite any "crafters" in the club to join them every Wednesday at 10:00 AM at the Show Low Historical Museum with a group who call themselves "Creative Crafters." There is no charge; just bring a project to work on and have fun!

If there are other artists in our club (and I know there are!) who would like to share and perhaps teach their techniques, by all means, let your editor know!



**LEFT, TOP & BOTTOM:** Mary & husband, as young married, and then in middle age, on sandstone.

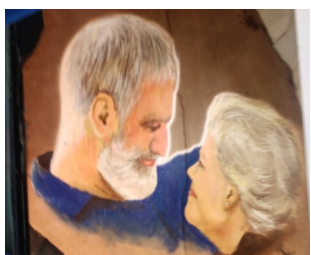
**TOP:** Two of the purses that Mary had with her at the meeting.



**TOP:** The beautiful sandstone (left) that was Myra's inspiration for the silk scarf (right).



**BOTTOM LEFT:** Myra's beautiful multi-tiered necklace, displayed here at our show.





Coal

# ROCK OF THE MONTH

## CONCLUSION--SEDIMENTARY ROCK



Banded Chert

**W**e have examined sedimentary rock, the most common, and often found, rock on the planet earth. As we know, detrital sedimentary rock is formed from sediments, any rock or mineral, including other sedimentary rock that break down at the surface of the earth. These sediments pile up after being moved downslope by wind, water, or ice, and form vast formations of sedimentary rock called shale, sandstone, or conglomerate, and others. Chemical sedimentary rocks also pile up in water and form huge formations as the mineral-laden waters evaporate. Gypsum rock salt and others are chemical sedimentary rock. Because most limestone is formed from the accumulations of calcareous skeletons of organisms, it is considered a biochemical sedimentary rock.

Our final examination of sedimentary rock will be a brief summary of "suspect" sedimentary rocks, in which there may be disagreement in the scientific community as to the established method of formation.

Banded iron formation, BIF, is one such rock. BIF is a geologically significant deposit both in age, at approximately 1.8 billion years old, and composition. Technically known as ferruginous (iron-bearing) cherts, these rocks are banded. Red cherts which are often misnamed as jasper; iron-rich layers composed of hematite or siderite; black bands of magnetite and pyrite, and bands of tiger-eye are often present. Because they are highly recrystallized, scientists debate as to how these formations were created from precipitation of minerals in lakes, bogs, mudflats, or even deep water. Many believe that organic activity aided the association of carbonates and metal sulfides to be precipitated in water. This adds to the mystery of the formation of BIF because the scientific consensus is that only primitive organisms existed on earth at the time. While the Canadian shield is known for BIF, it can be found locally on Mingus Mountain in central Arizona.

Bituminous coal is another sedimentary rock causing scientific debate. The general formation

taught in geology classes begins with extensive vegetation that falls into low-oxygen, shallow, boggy waters. With little oxygen present, the organic material does not decompose and rot away. With pressure, and plenty of time, the organic material forms peat, then lignite, then bituminous coal. The main debate involves the time and pressure elements. How much pressure is needed and what time length is necessary. Is coal forming now? Major coal deposits have formed in every geological period since the Upper Carboniferous, 350 -270 million years ago. (Walker, 2000.) Bituminous coal becomes a metamorphic variety called anthracite coal that we will look at in a metamorphic rock essay.

Jet, with a high carbon content, is also classified as a type of coal but its' origins are open to debate. Unlike coal which has a continental origin, jet is often found in marine sediments. Hard enough to take a good polish, jet is often used in jewelry making.

Chert and flint, formed from the accumulation of crypto-crystalline silica, and often classified as a chalcedony such as agate, or jasper, has a debatable origin. Formation could come from a colloidal, (mixture) form on the sea floor, or from organic opal formed with sponge spicules, or in some other way.

Concretions include sand or mud formations in sandstone and mudstone, septarian, which form in muds and are infiltrated with calcite as the mud dries and cracks, and pyrite nodules. They are thought to form in much the same way, where sections of the original formation are filled with mineral-laden waters, causing the grains of material to coalesce around a center core, or particle, sometimes even a fossil. This idea is debatable.

This concludes our discussion on common sedimentary rocks. With so many possibilities of formations and materials they are made of, sedimentary rocks can be fun to find, collect, and compare.

**(EDITOR'S NOTE: See the rock cycle diagram on Page 10 of extended pages.)**

# ROCK CYCLE

