



White Mountain Gem & Mineral Club
 P.O. Box 3504
 Show Low, Arizona 85902
www.whitemountain-azrockclub.org
whitemtngmc@gmail.com

PRESIDENT'S LETTER ≈ MAY 3, 2026

The year appears to be flying by as we struggle to keep up. So much has been happening and is about to happen, there do not seem to be enough hours in the day to accomplish everything. April was a blur, with the holidays, a late club meeting and a double field trip; our time was filled.



The weekend of the field trip was also the Show Low Chamber of Commerce BIZ Expo which our club took part in. It was a success with our group handing out many upcoming show flyers, answering questions, and even selling enough rocks to break even on the fee we were charged. Thanks to Brookie, Larry, and Carl for their excellent help.

Our field trips, shared by the Payson club, were also well attended and were fun for all involved.

This month is another busy one. Our meeting today, the highway cleanup scheduled for May 16, our monthly field trip lead by Dick Turpin to the Apache Creek Camp in New Mexico on May 23, and the Show Low "Rockin the Rim" extravaganza scheduled for May 22 – 24 at Frontier Park. We have a free booth, with a bit of volunteer labor agreed to, and will team up with Doug Wolfe and his dinosaur group to run the children's section of the fair.



Please find time in those three days to attend, help if you can, and be a presence to support our club activities. Every bit of support helps us show our commitment to our community.

So what can we expect for June? Well, June should be the busiest of all. All of our efforts should be focused to making our 27th Annual Gem, Mineral, and Fossil Show in July the best ever. Sign up for what interests you, hand out flyers wherever you go, and remind friends and neighbors of the show, July 10-12 at the Show Low Elks Club. Plan for set-up on July 9, and the pot luck we offer to our vendors that same afternoon.

So far, this has been an exciting year and will continue to be with everyone's help and commitment. Remember, every little bit helps us achieve our goals and advance our club.

Thank you. Donna L. Pollard, President WMGMC



HAPPY MAY BIRTHDAYS

Diann Burney
 Karen Hickman
 Adrien McClure
 Mike Soboleske
 Linda Stalder
 Wendy Yang

Monthly Potluck for June:
 Last Names M through Z

LET'S DO LUNCH

The Let's Do Lunch Club will meet at Smokehouse Bar and Grill, 680 Main Street, Snowflake, AZ, on Thursday, May 28th, at Noon. We look forward to seeing you there.

CALL FOR ARTICLES

If you have a favorite rock, geologic topic, lapidary technique, or DIY project you would like to share with your fellow club members, we welcome your contributions to our knowledge of the wonderful world of rocks. See page 3 for submission details.

In This Issue

President's Letter	1
Bulletin Board/Treasurer's Report	2
Club Information	3
Meeting Minutes	4
May Field Trip/April Report	5
Rock of the Month	6
Rockin' Shows Coming Up	7
Calendar of Events	8
Lapidary Adventures	9
Club Photos	10

Fossil Footprints from Jim Lang's property near Snowflake, AZ.
 Photos by Lynne Erickson and Dick Turpin.



TREASURER'S REPORT

April Expense

Rock Talk Printing & Postage, Chamber of Commerce Dues, Show Expenses, Historian Supplies, Arizona Corporation Commission (Update), Meeting Supplies, Club Promotion

Upcoming Expense

Tax Preparation, Meeting Supplies, *Rock Talk* Printing & Postage

Income This Month

Member Dues, Member Donations, Badge Payments, Silent Auction, 50/50 Raffle

WELCOME NEW MEMBERS

Cynthia Sahhar, Bob Alpin,
 Jamie and Jim Konopacky

Rock Talk Newsletter

Our newsletter is published monthly by the White Mountain Gem & Mineral Club, Inc. Any information or comments members wish to include in the monthly newsletter must be given to the editor at the general membership meeting or call the editor no later than Tuesday following the meeting.

Membership Dues

Membership dues are \$20 for a single membership and \$25 for a couple/family. (\$5 less if you receive newsletter by email.) Dues are paid in January each year along with a completed application form. Memberships initiated in November or later in a given year are also good for the following year.

Meetings

We meet the first Sunday of the month (unless it falls on a holiday) at the VFW Post 9907, 381 North Central Avenue in Show Low. Turn north off the Deuce of Clubs at Burger King. Social half hour at 1:00 PM, meeting starts at 1:30 PM.

Elected Officers

OFFICE	NAME	PHONE	EMAIL
PRESIDENT	Donna Pollard	(480)600-2714	tdpollard@msn.com
VICE PRESIDENT	Sandra Angelo	(928)537-3726	sandra_angelo@hotmail.com
2ND VICE PRESIDENT	Debbie Trimble	(520)400-6527	dltrimble076@aol.com
SECRETARY	Shelly Applegate	(928)245-4300	shellylynn@gmail.com
TREASURER	Kim Whitley	(928)853-4455	kimwhitley@gmail.com
EDITOR	Bea Kennedy	(330)391-1916	bea.bullwinkl@gmail.com
FIELD TRIPS	Dick Turpin	(480)240-0995	dickturpinaz@gmail.com
	Ursula Wilson	(928)532-5703	uwilson@yahoo.com

Members At Large

Hope Rubi	(928)228-8851	Terry Pollard	(480)431-0686
Ursula Wilson	(928)532-5703	Carl Hickman	(928)536-3744

Volunteer Positions

Website Maintenance	Donna Pollard	(480)600-2714	tdpollard@msn.com
Show Chairman	Sandra Angelo	(928)537-3726	sandra_angelo@hotmail.com
Assistant Show Chairman	Ursula Wilson	(928)532-5703	uwilson@yahoo.com
Sunshine	Donna Pollard	480-600-2714	tdpollard@msn.com
Education, Schools	Open		
Greeter/Door Prizes/Raffle	Thelma Gray		
Auctioneer	Donna and Terry Pollard		
Highway Cleanup	Brookie/ Larry Embry	(928)537-0760	
Bonus Prizes	Sandra Angelo	(928)537-3726	
Historian	Donna Pollard	(480)600-2714	tdpollard@msn.com
Librarian	Rick Palmer	(928)333-5019	palmer57@frontiernet.net
Meeting Room Setup/Cleanup	Shelly Applegate	(928)245-4300	shellylynn@gmail.com

Chamber of Commerce Liaisons

<u>Show Low</u> : Donna Pollard	<u>Snowflake/Taylor</u> : Karen Hickman
<u>Springerville/Eager</u> : Open	<u>Heber/Overgaard</u> : Open

Fossil footprints from Jim Lang's property near Snowflake, AZ. Photos by Lynne Erickson and Dick Turpin.



WHITE MOUNTAIN GEM & MINERAL CLUB MEETING MINUTES MAY 3, 2026

Our Meeting began at 1:30 led by our wonderful club leader Donna Pollard! We began the meeting as usual with the Pledge of Allegiance and Greetings to our Guests and New Members.

President's Letter: Donna reminded us of a few events coming up:

- Show Low Days-help with the Dino booth. Bring free Rocks!
- July 10-12 Gem show. On the ninth, potluck and setup.

Show and Tell:

- Doug Wolfe shared his contumacious Arizonia- a relative of ammonite. It was a cast found in Springerville.
- Dick and Donna- fossilized shells and other nautilus creatures. Dick has some he has coated in Pereloid b72.
- Myra- Fossil soup rock: a rock containing a variety of fossils in one.
- Bea- some blue hills calcite she has worked with and all her experimentation (see April newsletter).

"Rockin the Rim":

We would like to collect all kinds of fake plants if you have any for the Dino Booth. Reach out to Donna if you have some you'd like to donate.

Field Trip:

- Last trip: Dinosaur footprints trip and Shane Pollard property.
- Next Trip: Apache Creek Camp: Meet 8:00 at the Y at the Dollar General, (2 hour drive from Show Low) Lee Russell Canyon you'll find likely Luna Blue Agate, Bring quarters for kids if you'd like.

Program:

Donna taught us how to read a Geological map.

Business Meeting:

- Let's Do Lunch: May 28, At the Snowflake Smokehouse Bar & Grill, at 12:00.
- Lynne: Show Gift Baskets, picnic and rockhounding baskets. For a list of items we need, contact Lynne.
- Sandra, Show Related: Spend 2 hours a day, any of the days to help with the show. Need people to bring food for the Potluck on Thursday and someone to help run the breakfast portion and coffee for the day.
- White Mt. Symphony: Final of the season, 3:00, June 6, Show Low Auditorium.
- May 16: Highway Cleanup. Meet at Chamber of Commerce parking lot 9:00.
- Door Prize: Winners: Doug, Carl, Loren.
- 50/50-Winners: Our Newest member, Jamie, and Dick

Adjourn

Time:3:48

Respectfully submitted, Shelley Applegate

MAY FIELD TRIP ≈ APRIL FIELD TRIP REPORT

May 2026 Field Trip: Apache Creek - Luna Blue Agate

Field Trip Leader: Dick Turpin 480-240-0995 dickturpinaz@gmail.com

Date: Saturday, May 23, 2026

Location of the Field Trip Site: Apache Creek Camp for the Deaf and Hard of Hearing, about 6 miles north of Reserve, New Mexico.

Where and When We Will Meet: Dollar General store at the "Y" at the intersection of highways 60 and 61. Meeting time: 8:00 AM, depart at 8:15

Recommended Vehicle: Any vehicle can reach the Apache Creek Camp. The climb to the collecting area is steep and can be muddy. A 4WD vehicle may be helpful.

What we will collect: Luna Blue Agate, quartz crystals.

Recommended Things to Take: Buckets, rock hammer, grabber, digging tools, camera, water, lunch, sunscreen.

Cell Phone Service: Cell service may be limited.

Options: If you prefer to stay overnight, space may be available at the Camp. Check with Debbie Lange at 915-525-0147.



Luna Blue Agate



April 2026 Field Trip Report – Prehistoric Animal Footprints and Marine Fossils

Nearly a decade ago, Jim Lang, a Chicago attorney preparing for retirement, purchased a rural property about ten miles southeast of Snowflake. Having acquired the land sight unseen, he became intrigued by the desert landscape and spent considerable time exploring his new homestead. One area featured a wash where thick slabs of sandstone were exposed.



During one of his walks, Jim noticed a slab containing what appeared to be a five-toed footprint. Initially dismissing it as imagination, he continued flipping over additional slabs and found several similar impressions. With considerable effort, he hauled the unusual rocks back to his home and began arranging them like pieces of a jigsaw puzzle. When he realized the footprints aligned and pointed in the same direction, he became convinced he had discovered genuine prehistoric animal tracks.



Jim’s curiosity led him to paleontologist Spencer Lucas, curator of the New Mexico Museum of Natural History and Science. Dr. Lucas assembled a team and traveled to Snowflake to evaluate the site. Their study concluded that Jim had uncovered a world-class assemblage of Mid-Triassic footprints made by pre-dinosaur reptiles known as Chirotheriums—animals resembling modern monitor lizards but with longer legs. The team eventually transported about half of the slabs to the museum in Albuquerque for study and preservation, with hopes of building a future facility to house and display the tracks.

We would like to thank Rollo Pool and the Payson Rimstones for inviting our club to join this field trip. In return, we invited them to visit Shane Pollard’s property near Donna’s home to collect fossils. Although much of the ground at this second site was covered with basalt from recent lava flows, pockets of white limestone boulders were present. This limestone, deposited in a shallow Cretaceous sea, is composed largely of oysters called Pynchodonte newberryi.

Extracting fossils from this material presented a challenge, as the delicate shells can break easily during cleaning. The most effective method proved to be a short soak in acid, which removed the brown soil stains and exposed the oyster shells more clearly. Applying a fossil preservative afterward further improved visibility and stability.



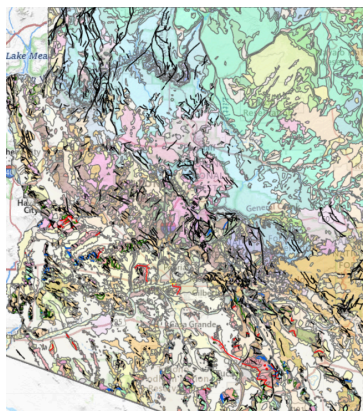
Many thanks to Rollo and Donna for organizing a field trip that was refreshingly different from our usual outings. Altogether, the day offered a fascinating look into the world of prehistoric animals and ancient marine environments.

ROCK OF THE MONTH

BASICS OF UNDERSTANDING GEOLOGIC MAPS

Submitted by Donna Pollard

“Geologic maps may be the most concentrated form of knowledge ever put on paper, a combination of truth and beauty.”
ThoughtCo

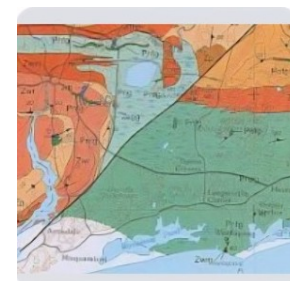


Arizona Geological Survey <https://geomapaz.azgs.arizona.edu/>

- Lines on a Geologic map outline various rock units or formations, the “contacts” between the rock units. These are fine lines unless the contact is a fault or other “discontinuity”.
- Short lines with numbers next to them are strike-and-dip symbols. These symbols give a third dimension to the formations, showing the direction and angle they dip into the ground. In sedimentary rock the bedding planes of the different layers of the sedimentary rocks can be measured. In metamorphic rocks the direction of foliation (layers of minerals) is measured. Measurement is accomplished using a specialized compass, or transit.
- Strike is a level line of a formation’s bedding or foliation across the surface, the direction you would walk without going up or downhill. The dip is how steeply the bed or foliation slopes downhill. If a road is going straight down a hill, the center line would be the dip. A crosswalk would be the strike.
- Faults and folds are thick black or red lines. Anticlinal (A) shapes, or Synclinal (V) shapes indicated folds in the formations.

• The letter symbols signify the name and age of the rock unit. While most of the alphabet indicate the correct spelling of the rock unit, certain letters, “P” and “C”, are so common they need special designations. For example Cretaceous, a period from 144 to 66 million years ago is designated with a “K” from the German word Kreidezeit. This is why the meteor impact that is believed to have ended the Cretaceous, and the dinosaurs, and began the Tertiary Period, is called the K-T boundary. The next letters may indicate the type of rock, such as Cretaceous shale (Ksh). If the formation is mixed rock, the following letters may be an abbreviation of the formation name, such as Cretaceous Maybell sandstone (Kms). The second letter could also be an age term. Examples abound in the Cenozoic Era, such as Tertiary Period, Oligocene Epoch sandstone (Tos).

• What makes geologic maps special, and beautiful, are the vibrant colors of the maps. A Geologic map could be made without color but it would be like a paint-by-number set without the paint. The lines, symbols, and numbers would provide the information needed, but it would not be very user-friendly. In the 1800s, two systems were developed for Geologic map colors, the harmonious American method, and the more arbitrary International Standard. Even now, those standards only apply to the most common rocks, sedimentary rocks of marine origin. Terrestrial sedimentary rocks use the same color pattern but include patterns. Most igneous rocks tend to use red colors, but if they are plutonic (volcanic), lighter red tones and patterns of polygonal shapes are included. The oldest igneous often have the darkest red shades. Metamorphic rocks use rich secondary colors and oriented linear patterns. Geologic map design is a specialty art.



Geologic Map of Fault

• There are no rules that a Geologic map cannot deviate from the standards. If certain rocks are missing from a sequence of certain time periods, unit colors can vary without creating confusion. The colors may clash and not be pleasant to look at. The cost of printing certain colors may be too expensive.” Geologic maps, especially the kind printed on paper, really do represent a dialog between truth and beauty.” (ThoughtCo.)

• Trivia of Geological Maps: (1) The oldest known Geological map dates from 3000+ years ago, roughly 1150 B.C., the Turin Papyrus map in ancient Egypt used to help miners find gold-bearing rock. (2) The “Map that Changed the World,” 1815 England. This was the first nationwide map drawn by a canal digger who recognized how the same rock formations were situated over wide areas of the country. He and his work were ostracized because he had no formal education. His work provided the foundation of modern stratigraphy. (3) There is evidence that Mammoth Cave, Kentucky, was mapped by native Americans as early as 2000 B.C. It was not until the 1700s and 1800s that more mapping of the cavern was accomplished. (4) Mapping did not end on Earth. In the 1960s geologist Gene Shoemaker paved the way for planetary geology by mapping the Moon using telescopic imagery of the lunar rock formations. Because of this work, a geologist, Harrison “Jack” Schmitt, was selected for the final Apollo mission #17 in December 1972. He was the only professional scientist to walk on the Moon.

National Park Service <https://www.nps.gov>, USGS <https://ngmdb.usgs.gov>, Geologic Society of America <https://www.geosociety.org>, ThoughtCo <https://www.thoughtco.com>

ROCKIN' SHOWS COMING UP!

MAY 2026

8-10—TUCSON, ARIZONA: The Tucson Fine Mineral Gallery Spring Showcase. Hours: 10AM-6PM Daily. Venue: The Tucson Fine Mineral Gallery, 465 W St Marys Rd, Tucson, AZ 85701
Website: <https://tucsonfineminerals.com/>



JULY 2026

10-12—SHOW LOW, ARIZONA:

We are thrilled to announce that White Mountain Gem and Mineral Club (WMGMC) has scheduled its 27th Gem Show for Friday, Saturday and Sunday, July 10 through 12 at the Elks Lodge located at 805 E Whipple Street, Show Low, Arizona 85901. Fri. 9-5, Sat. 9-5, Sun. 10-4; Adults \$5, Kids free with an adult; contact Sandra Angelo, Show Chair, sandra_angelo@hotmail.com. Website: <https://whitemountain-azrockclub.org/>

THE WHITE MOUNTAIN GEM AND MINERAL CLUB PRESENTS OUR
27TH ROCK, GEM, MINERAL AND FOSSIL SHOW
JULY 10-12, 2026
FRIDAY 9 AM -- 5 PM
SATURDAY 9 AM -- 5 PM
SUNDAY 10 AM -- 4 PM




Admission
Adults \$5, Kids Free With Adult
Location: Show Low Elks Lodge
805 E Whipple Street
Show Low, Arizona

MEMBERSHIP

We welcome new members! Please visit our website below for meeting times and location.

♦ Jewelry ♦ Fluorescents ♦ Gold
 ♦ Displays ♦ Demonstrations ♦ Fossils ♦ Kid's Corner
 ♦ Door Prizes ♦ Vendors ♦ Food Service Daily

Contact us at www.whitemountain-azrockclub.org

JULY-AUGUST 2026

July 31-August 2—PRESCOTT VALLEY, ARIZONA: Annual show; Prescott Gem & Mineral Club; Findlay Toyota Center, 3201 N Main St; Fri. 9-5, Sat. 9-5, Sun. 9-4; \$5 General Admission, \$4 Seniors, Vets and Students, Children Under 12, Free; 22nd Annual Prescott Gem & Mineral Show. Largest indoor gem & mineral show in Northern Arizona! Over 75 vendors offering mineral specimens, beads, slabs, cabochons, crystals, fossils, meteorites, fine jewelry, classes, kids area and more; contact Dan Hunt, Show Chair; Email: pgmshowchairperson@gmail.com; Website: <https://www.prescottgemmineral.org/>



Happiness is a box full of rocks.

Dinosaur Tracks, Fossil Water Ripples, and Cretaceous Marine Fossils (photographs provided by Donna)



WHITE MOUNTAIN GEM
& MINERAL CLUB
CALENDAR OF EVENTS



FIELD TRIPS WANTED!!

PLEASE LET US KNOW OF ANY

GREAT PLACES FOR OUR OUTINGS!

MONTH	MEETING DATE	FIELD TRIP DATE	NOTES
JANUARY	4	17	Gila County Show
FEBRUARY	1	21	
MARCH	1	21	Mellon Center Show—14th
APRIL	12	25	
MAY	3	23	Highway Cleanup—16th
JUNE	7	27	
JULY	5	25	ANNUAL SHOW 10-11-12
AUGUST	2	22	
SEPTEMBER	6 (Picnic)	26	Highway Cleanup—19th
OCTOBER	4	24	Harvest Fest
NOVEMBER	1	21	
DECEMBER	6	CHRISTMAS PARTY	

LAPIDARY ADVENTURES

Building a DIY Flat Lap

Submitted by Bea Kennedy



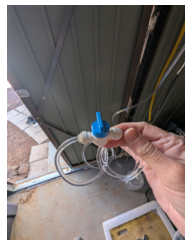
Last fall, I was given an Emerson swamp cooler motor. After consulting one of my Facebook groups about what I might be able to do with it, there were several possibilities that seemed reasonable:

- A slab saw. This is something I would dearly love to own, but at this time I do not have the metal fabrication skills or tools to take on a project like this.
- A cab machine. Also on the ever growing wish list, but also beyond my skill set and tools at present.
- A flat lap. This is what I landed on because I have the skills to manage this sort of project, and the materials needed to complete it were easily obtainable.

Once I decided on the particular machine to be built, I searched YouTube for design possibilities. The design I found in this video - <https://youtu.be/wf6syH-0qZU?si=J2pPIJwHKCpreTIA> - seemed to be the simplest with fewest parts to purchase.

**Materials used:**

- One Emerson swamp cooler motor running at 1725 RPM.
- A 15-inch tall sturdy plastic flowerpot from Home Depot.
- A hard plastic salad bowl from the thrift store, approximately 10-11 inches in diameter.
- An extended length left-handed arbor shaft and matching nut (lefty tighty, righty loosey). I initially purchased the wrong one leading to the nut loosening when the motor was running instead of tightening.
- A round pine base, three 12-inch shelf brackets, two 12-inch duct clamps, scrap wood to elevate the motor to the correct height.
- One soft-start to dampen the initial surge of the motor on power up. (We run everything on solar, and our inverter doesn't like big power surges, though the motor itself only runs at about 300 watts.)
- Various mounting screws.
- One 8-inch aluminum master lap.
- One set of 8-inch diamond laps.
- A plastic valve and tubing for the water system, along with a 1-gallon jug for water supply and another for drainage. Not something one would necessarily think of, but a knitting needle happens to be very useful in keeping the tubing all the way at the bottom of the water supply jug. Also, a short piece of heavy copper wire to direct the water flow onto the lap.
- A short piece of 1-inch PVC pipe and epoxy.
- A 15-amp outdoor on/off switch extension cord (Original motor had no on/off switch. This was way easier than rewiring the motor.)

**Construction:**

The first step was to locate the mounting position for the shelf brackets so the motor would be centered on the round pine base. Next, we drilled a hole in the bottom of the plastic flowerpot and the salad bowl for the arbor to extend through. I then epoxied the flowerpot and salad bowl together and let those pieces dry. Next was to epoxy the PVC pipe to the inside of the salad bowl to prevent water from reaching the motor, then drill a hole near the base of the salad bowl for the drainage tube and epoxy that in place. Next was a test fit and raising the height of the motor with scrap wood so that the arbor would extend far enough through the salad bowl for proper mounting of the master lap and diamond discs. Once everything was test fit, we glued the wood blocks together and glued them to the base, screwed

down the shelf brackets, tightened the duct clamps, installed the soft start, and screwed the flowerpot/salad bowl assembly to the wooden base. I then installed the master lap and diamond disc and set up the water supply system.

Use:

Using my DIY flat lap, as far as I can tell from YouTube videos, is the same as any commercially available machine. Overall, the process of building and using my own machine was quite enjoyable. Many thanks to my husband, Terry, for his invaluable assistance and to Elijah DeJong for the gift of the motor.



AROUND AND ABOUT

May 3, 2026 Meeting Photos And April Field Trip Photos

