

# ROCK TALK



White Mountain Gem & Mineral Club  
P.O. Box 3504  
Show Low, Arizona 85902  
[www.whitemountain-azrockclub.org](http://www.whitemountain-azrockclub.org)  
[whitemtngmc@gmail.com](mailto:whitemtngmc@gmail.com)

Vol. 29, Issue 10  
October 2025

## PRESIDENT'S LETTER

### Fun Trunk or Treat! Thanks to everyone who shared!

**T**hank you to the determined highway clean-up crew. Some very interesting finds. But you won't see them in our book; pics have been deleted. Loved the cookies, Brookie.

November is our annual Board elections. Thanks to everyone who raised their hand. We still have two very important roles to fill. We need an editor (BG is retiring) and also a Show Chair! Support is available for both positions.

The Snowflake-Taylor Chamber of Commerce hosts HarvestFest. It is a super outreach activity for our club. We will be in the Game Zone with our spinning wheel giving out rocks and information to kids of all ages.

The field trip this month will be to our site in Blue Hills Environmental (BHE) in St. Johns. It's a great place to find Phytosaurs fossils, petrified wood, and various minerals. Let Dick know if you plan to attend. It is a private road to the site and BHE wants to know who is there.

**Trivia:** A sedimentary rock, shale is essentially the same as clay but under great pressure, causing compression and hardening. Found at the bottom of oceans, seas and floodplains, they became the resting place of what later have become known as fossils. Grinding up shale makes it usable for roof tiles, bricks and pottery. Sometimes appearing as greasy slabs, this oil shale could make you very rich if you could find a cheap way to squeeze the oil out.

Happy Spooky Halloween!

Sandra



### TREASURER'S REPORT

#### September Expense

Member Badges

#### Upcoming Expense

Rock Talk Printing, Postage  
Meeting Supplies

#### Income This Month

None

# BULLETIN BOARD

## Happy October Birthday to:

|                  |                  |
|------------------|------------------|
| Othello Ayem     | Kelly Morrow     |
| Darren Begly     | Roni Paladino    |
| Debbie Christmas | Cheryl Pietsch   |
| Kerri Clement    | Jeannine Russ    |
| Bexleigh Dietert | Richard Russ     |
| Lynne Erickson   | John Shearer     |
| Carl Hickman     | Dick Turpin      |
| Brenda Hogarth   | Mary Alice Vertz |
| Sherry Martin    |                  |

Don't forget to  
fill out your  
ballot on  
Page 9. Ballots  
will also be  
available at the  
meeting.

## IN THIS ISSUE

| ITEM                                   | PAGE |
|--|------|
| President's Letter/ Treasurer's Report | 1    |
| Notes of Interest/Reminders            | 2    |
| Club Information                       | 3    |
| Meeting Minutes                        | 4    |
| Rock of the Month                      | 5    |
| October Field Trip                     | 6    |
| The Rock Show Scene for AZ             | 7    |
| What is an Ammonite                    | 8    |
| Ballot for Officers for 2026           | 9    |
| <b>ADDITIONAL PAGES</b>                |      |
| Meeting Room Photos                    | 10   |

**Why not join our  
Let's Do Lunch Club**

**Where:** Licano's  
573 W Deuce of Clubs, Show Low  
**When:** Thursday October 30,  
12:00 Noon

**Let's Celebrate Our  
October Birthdays!!**

**NOTE:** If you would rather your birthday not be publicized, but you would like to celebrate it, phone or text Hope Rubi and let her know your birthday month and favorite cake. (928-228-8851)

## Rock Talk Newsletter

Our newsletter is published monthly by the White Mountain Gem & Mineral Club, Inc. Any information or comments members wish to include in the monthly newsletter must be given to the editor at the general membership meeting or call the editor no later than Tuesday following the meeting.

## Membership Dues

Membership dues are \$20 for a single membership and \$25 for a couple/family. (\$5 less if you receive newsletter by email.) Dues are paid in January each year along with a completed application form. Memberships initiated in November or later in a given year are also good for the following year.

## Meetings

We meet the first Sunday of the month (unless it falls on a holiday) at the VFW Post 9907, 381 North Central Avenue in Show Low. Turn north off the Deuce of Clubs at Burger King. Social half hour at 1:00 PM, meeting starts at 1:30 PM.

## ELECTED OFFICERS

| Office             | Name             | Phone                               | E-Mail                    |
|--------------------|------------------|-------------------------------------|---------------------------|
| PRESIDENT          | Sandra Angelo    | (928)537-3726                       | sandra_angelo@hotmail.com |
| VICE PRESIDENT     | Debbie Trimble   | (520)400-6527                       | dltrimble076@aol.com      |
| 2ND VICE PRESIDENT | Mike Soboleske   | (952)242-6115                       | Fritso53@gmail.com        |
| SECRETARY          | Shelly Applegate | (928)245-4300                       | shellylynn@gmail.com      |
| TREASURER          | Kim Whitley      | (928)853-4455                       | kimwhitley@gmail.com      |
| EDITOR             | B.G. Hogarth     | (928)532-3043<br>Cell-(775)397-2312 | hogarths@citlink.net      |
| FIELD TRIPS        | Dick Turpin      | (480)240-0995                       | dickturpinaz@gmail.com    |
|                    | Rick Palmer      | (928)333-5019                       | palmer57@frontiernet.net  |

## Members at Large

|               |               |
|---------------|---------------|
| Hope Rubi     | (928)228-8851 |
| Terry Pollard | (480)431-0686 |
| Ursula Wilson | (928)532-5703 |
| Carl Hickman  | (928)536-3744 |

## Volunteer Positions

|                            |                         |               |                          |
|----------------------------|-------------------------|---------------|--------------------------|
| Webmaster/Coalition Chair  | Aimee Webster           | (602)503-8417 | afwebster61@gmail.com    |
| Show Chairman              | Cathy Cargile           | (714)348-9162 | sky ranch5734@yahoo.com  |
| Assistant Show Chairman    | Ursula Wilson           | (928)532-5703 |                          |
| Sunshine                   | Donna Pollard           | 480-600-2714  | tdpollard@msn.com        |
| Education, Schools         | Open                    |               |                          |
| Greeter/Door Prizes/Raffle | Thelma Gray/Diane Moten |               |                          |
| Auctioneer                 | Donna and Terry Pollard |               |                          |
| Highway Cleanup            | Brookie/ Larry Embry    | (928)537-0760 |                          |
| Bonus Prizes               | Sandra Angelo           | (928)537-3726 |                          |
| Historian                  | Donna Pollard           | (480)600-2714 | tdpollard@msn.com        |
| Librarian                  | Rick Palmer             | (928)333-5019 | palmer57@frontiernet.net |
| Meeting Room Setup/cleanup | Shelly Applegate        | (928)245-4300 | shellylynn@gmail.com     |

## Chamber of Commerce Liaisons

Show Low: B.G. Hogarth

Snowflake/Taylor: Karen Hickman

Springerville/Eager: Rick Palmer

Heber/Overgaard: Aimee Webster



# WHITE MOUNTAIN GEM & MINERAL CLUB

## MEETING MINUTES OCTOBER 5, 2025

The meeting was called to order at 1:32PM with 37 people in attendance.

President Sandra Angelo opened the meeting with the Pledge of Allegiance and greetings to the club members! Two guests, Rita and Gabriel were welcomed.

For Show and Tell Dick Turpin shared "leopard skin" and a red-layered obsidian. Donna mentioned an acquaintance who is selling many items of interest to rockhounds. He has tools, lots of glass, rocks, etc. Donna will be visiting the gentleman in a couple of weeks. Debbie showed some blue celestite and hackmanite (which fluoresces bright orange!). Chooch showed some beautiful agates and crystals that he found at Lee Russell Canyon. Loren showed a crystalline gold nugget from Australia.

We are participating in Harvest Fest on Saturday October 11 from 9:00AM to 2:00PM at Snowflake Pioneer Park. We need volunteers for setup to meet at 7:30AM at the storage unit.

Brookie reported six people participated in the club's highway clean-up. Something humorous was found but it will not be mentioned! The six had to eat all the cookies themselves.

Board Members did not have anything to report. The ballot for next year's club officials was built. Remember, elections are at the November meeting! Ballots may be returned by mail prior to November 2.

For our program, Dick presented Rockhounding the Internet. Books are a great resource but so is the internet. He led us to the necessary resources for finding rockhounding locations and information.

The door prizes included a marine fossil and two lace agate slabs.

The 50/50 and door prizes were held. Chooch won the 50/50 drawing and door prizes were won by Sandra and Blue.

We then proceeded to the parking lot for our Trunk or Treat With Rocks. This seemed to be a resounding treasure hunt for everyone!

The minutes of the September meeting were approved, the treasurer reported everything is good, and Sandra again reminded us of the Harvest Festival. There was no old nor new business to discuss.

There being no further business to discuss, the meeting adjourned 3:46PM.

May your pranks be funny and your buckets full (Of rocks, candy, or even Rock Candy!!!) Have a Happy Halloween Everyone!

Respectfully submitted:

Shelly Applegate, Secretary

# ROCK OF THE MONTH

## SERPENTINE

**S**erpentinite, or serpentine, is a metamorphic rock formed from iron/magnesium rocks at great depths below the ocean floor. The formation reaction involves the loss of iron and production of hydrogen which is obtained from water.



The ancient origin of the name is uncertain, but may be from the similarity of its texture or color to snake skin.

Serpentine is relatively soft, with a hardness of 2.5 to 3.5 on the Mohs scale, making it useful in carved art and utensils.

Serpentine can be found in Gila County, Arizona, near the town of Young.

Serpentine is closely related to olivine and asbestos. It is the state rock of California, but an attempt has been made to remove it because it can contain chrysotile asbestos. Because of this relationship, serpentine dust from cutting or polishing should be considered especially hazardous.

Excerpted from Wikipedia

Image credit: Wikipedia



# OCTOBER FIELD TRIP

## ST. JOHNS LANDFILL FOR FLUORESCENT CALCITE

**Field Trip Leader:** Dick Turpin 480-240-0995 dickturpinaz@gmail.com

**Date:** Saturday, October 25, 2025

**Location of the Field Trip Site:** We will be going to a site along the access road to the St. Johns landfill.

**Where and When We Will Meet:** We will meet at the Dollar General Store at the "Y" intersection on Highways 60 and 61 at 8:00 AM. A second meeting spot is the grocery/hardware store on Highway 61 in St. Johns. This will occur at about 8:30 AM.

**Recommended Vehicle:** Any vehicle can make it to the collecting area.

**What we will collect:** We will be collecting fossils and fluorescent calcite.

**Recommended Things to Take:** Bucket, rock hammer, grabber, digging tools, water, lunch, sun screen.

**Cell Phone Service:** The site likely has cell phone service due to its proximity to St. Johns.



### AND A FURTHER NOTE FOR THOSE INTERESTED IN PERIDOT . . . . .

Lynne Erickson has been working with Steven Joey from San Carlos for a trip to collect peridot. The trip will be the morning of Saturday, November 15 unless it rains. The cost is \$50 each for two to three hours of hounding. **Surface collecting only; no digging is allowed.** The trip is limited to 15 people. We will need to stop in Globe for reservation passes. Mr. Joey would like us to carpool as there isn't enough parking for everyone. Lynne has a list of 15 people already signed up but she is keeping a list of alternates in case someone cancels. She can be reached at 520-401-1202.

# AROUND AND ABOUT ON THE ROCK SHOW SCENE

OCTOBER 2025

## HUACHUCA MINERAL & GEM CLUB PRESENTS:

### THE 2025 ROCK & MINERAL SHOW

**NOVEMBER 7-9, 2025**

The Huachuca Mineral & Gem Club is proud to announce the return of its annual Rock & Mineral Show, happening Friday, November 7 through Sunday, November 9, 2025 at the Mall at Sierra Vista, 2200 El Mercado Loop, Sierra Vista, AZ.

This three-day event is a celebration of earth science, natural beauty, and hands-on discovery. Rockhounds, jewelry lovers, families, and curious minds are all welcome to explore and learn.

#### HIGHLIGHTS INCLUDE:

- Exhibits & vendors featuring minerals, fossils, gemstones, crystals, jewelry, and lapidary art.
- Live demonstrations including cabochon cutting and mineral identification.
- Kids' activities such as an egg carton rock hunt, small items for sale, and a wheel spin for prizes.
- Hourly raffles plus two grand prizes to be awarded during the show.

**Free Admission and Free Parking.  
Join Us!**

**Friday & Saturday, 9:00AM – 5:00 PM**

**Sunday, 10:00 AM – 4:00 PM**

**Mall at Sierra Vista  
2200 El Mercado Loop  
Sierra Vista, AZ**

## 10-12—BUCKEYE, ARIZONA:

Annual show; West Valley Rock and Mineral Club; Buckeye Equestrian Center, 10300 S Miller Rd; Fri. 9-5, Sat. 9-5, Sun. 9-4; Adults \$3, Kids 10 and under free; Kids rock treasure hunt, Live geode cracking, jewelry, lapidary equipment, beads, buy a ticket, win a prize, face painting, jewelry wrapping, too much to list; contact West Valley Rock and Mineral Club; Website: <https://westvalleyrockandmineralclub.com/>

## 16-19—TUCSON, ARIZONA:

Wholesale and retail show; Dealers Tucson Fall Gem Show; The Rock Yard (and 30+ more), 615 W Lester St; Thu. 9-5, Fri. 9-5, Sat. 9-5, Sun. 9-5; **Note:** This is a show put on by some of the largest Tucson dealers with over 30 participating in various locations across Tucson. Some are wholesale only-some are open to the public. Please see the website for a list of dealers; contact Bruce Barlow, (602) 571-9287;

Email: [Barlowsgems@msn.com](mailto:Barlowsgems@msn.com);

Website: [https://](https://therockyardtucsonongemshow.com/)

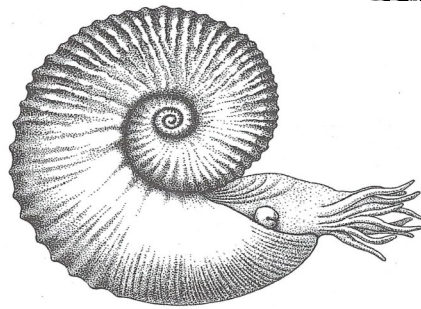
[therockyardtucsonongemshow.com/](https://therockyardtucsonongemshow.com/)

## 18-19—SEDONA, ARIZONA:

Annual show; Sedona Gem and Mineral Club; Sedona Red Rock HS, Hwy 89A at Upper Red Rock Loop Rd; Sat. 10-5, Sun. 10-4; adults \$5, children 12 & under free; Annual Rock, Gem and Jewelry Show. 45 vendors with specimens, rough and finished rock and many types of jewelry and supplies. Kids Adventure to collect 12 different specimens throughout the show; contact Mark Moorehead, (928) 274-4450; Email: [fifthestate23@gmail.com](mailto:fifthestate23@gmail.com); Website: [sedonagemandmineral.org](http://sedonagemandmineral.org).



# WHAT IS AN AMMONITE?



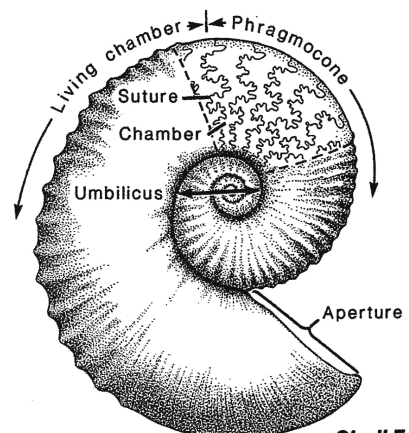
**A**mmonites are an extinct group of mollusks who died out at the close of the Cretaceous Period, along with the dinosaurs, about sixty-five million years ago. The hard shells which these organisms occupied are found as fossils in many places throughout the world.

Ammonites were cephalopods, predatory marine mollusks, and shared many similarities with their modern relatives, the squid, octopus, and chambered nautilus. Because the ammonite, like the chambered nautilus, secreted a hard chambered shell, it probably was closer to the nautilus than with other members of the group.

The most frequently preserved portion of the ammonite is the hard shell or conch. This shell served as protection for the soft tissue of the animal and also allowed the creature to remain buoyant in the marine environment in which it lived. Just as the chambered nautilus, the ammonite was able to remove fluid from the chambers of the shell as it grew, utilizing osmosis and a tube called the siphuncle. Replacing a portion of the fluid with gas gave the heavier-than-seawater creature natural buoyancy. This same principle is utilized by man-made submarines.

The pearl-like shell of the ammonite is comprised of alternating layers of aragonite and conchiolin. These layers were deposited by the mantle, a thin tissue which covered the entire animal and stuck to the shell as the animal grew. Each aragonite layer is about the thickness of the average wavelength of visible light. As light enters the shell, it is refracted and reflected as if it had passed through a prism. Thus, the human eye sees an array of colors when viewing a well-preserved ammonite shell.

The inside of the shell is divided into a chambered part and an unchambered part. The body of the animal occupied the unchambered part, or living chamber. The chambered portion of the shell was divided by partitions called septa. Unlike nautiloids which have "straight" and simple septa, the septa of ammonites evolved very complex undulations which gave greater strength to a thin shell. The contact of these septa with the external shell is called a suture. Sutures are very distinctive and are an important aid in the classification of ammonites.



**Shell Features  
of Ammonite**



# WHITE MOUNTAIN GEM & MINERAL CLUB

## NOVEMBER 2025 BALLOT

### OFFICERS AND BOARD FOR YEAR 2026

Members may bring the completed ballot to the November meeting. If mailing your ballot, please do so in time to be received **NO LATER THAN OCTOBER 30, 2025**. Please mark "Ballot" on the face of your envelope. Mail-ins will be opened during the November meeting by an ad hoc committee appointed by the president. Mail to: PO Box 3504, Show Low, AZ 85902. If you want to write a candidate's name in, please make sure you have received their permission to do so.

Please remember that write-ins are most welcome, but as stated above, make sure you have the permission of the person nominated.

| ELECTED POSITIONS                      |  | WRITE-INS |
|--|--|-----------|
| PRESIDENT                              | Donna Pollard  |           |
| VICE-PRESIDENT                         | Sandra Angelo  |           |
| SECOND VICE PRESIDENT                  | Debbie Trimble   |           |
| SECRETARY                              | Shelley Applegate  |           |
| TREASURER                              | Kim Whitley  |           |
| MEDIA COORDINATOR                      | Tippy Mueller  |           |
| MEMBERS AT LARGE<br>(VOTE FOR FOUR)    | Carl Hickman<br>Terry Pollard<br>Hope Rubi<br>Mike Soboleske<br>Dick Turpin<br>Ursula Wilson |           |
| FIELD TRIP CO-CHAIRS<br>(VOTE FOR TWO) | Debbie Christmas<br>Dick Turpin<br>Ursula Wilson   |           |

# AROUND AND ABOUT ON THE MEETING ROOM FLOOR

