

ROCK TALK



WHITE MOUNTAIN GEM AND MINERAL CLUB
SHOW LOW, ARIZONA

White Mountain Gem & Mineral Club
P.O. Box 3504
Show Low, Arizona 85902
www.whitemountain-azrockclub.org
whitemtngmc@gmail.com

Vol. 27, Issue 7
July 2023

PRESIDENT'S LETTER

How can it be July already? The year is half over! Time flies! But lots to do and experience the rest of the year.

Welcome new members Myra, Wendy, David, and Barbara. So glad you have decided to play with us. Thanks for joining us guests Lisa, Robert, Rick, and Fred. Thank you for sharing your Phytosaurus coprolite, Donna. Great 'show and tell'!

Show Low Days were a big success, we only had AZ petrified wood left (thank you, Dick), and not much of that. Thank you, Terry, Debbie, Othello, Malcolm, Karen, Carl, and Brookie for spending part of your Saturday playing with kids and promoting the club.

It's almost Show Time! The only way we can have a successful event is if everyone steps up to help. Ways to help include getting posters and flyers distributed, helping to set up, participating in the potluck, volunteering to work during the show, and tearing down after the show. There are all sorts of opportunities to help and special needs can be accommodated.

We have two critical positions to fill - Field Trip chair and Potluck Set-up coordinator. Beverly has served us well but is unable to continue in the role. The person needs to be

able to assure the supplies are at the meeting, tables are set up, and beverages are available. Club members join in to help since one person cannot (nor should not) do it all. Please consider stepping up.

The Field Trip chair has been open all year. Several have stepped up to lead an individual trip. That would work well with 11 volunteers. Unfortunately, we haven't had that many raise their hands. By now many of you have figured out that my sense of direction is lacking. So, pick a month and a location and raise your hand.

Trivia: Magnetite (iron oxide - Fe_3O_4) has a magnetic personality and is found in vast quantities worldwide in igneous, metamorphic, and sedimentary banded iron formations. This mineral played a crucial part in the discovery of the earth's tectonic plates. And migrating birds and dolphins use this guy to help find their way.

Mark your calendar for our September 3 meeting. We will be at the Old Pavilion in Show Low City Park. Always a fun way to conclude the summer!

See you at the show!
Sandra

TREASURER'S REPORT

Current & Upcoming Expense

Rock Talk Printing and Postage
IRS 990n Filing
Printing and Vendor Gifts for Show
Officer Redesigned Badges
Refreshment Fund

Income This Month:

Member Dues
Silent Auction
Fifty/Fifty Raffle

BULLETIN BOARD

*Hot July brings cooling showers,
Apricots and gillyflowers.
—Sara Coleridge*

Happy July Birthday To:

Marleigh Freyenhagen

Maureen Helm	Steve Miller
Mary Johnson	Kim Reynolds
Cathy McCue	Eva Ripperda
Blue Thompson	

Attention all of you wonderful organizers out there! (And you know who you are!)

Our club is in desperate need of two or three great organizers for:

- Meeting Room Setup/Teardown**
- Show Cheerleaders (See Cathy or Sandra for what this entails.)**

IN THIS ISSUE

DON'T FORGET

ITEM	PAGE
President's Letter/ Treasurer's Report	1
Notes of Interest Important Reminders	2
Club Information	3
Minutes of June Meeting	4
Show Low Days/July Field Trip	5
Report on June Field Trip	6
Crafty Corner	7
Rock of the Month	8
Meeting Photos	9
EXTENDED PAGES	
(None this month)	

Members whose last names begin M-Z will host the August meeting potluck

"LET'S DO LUNCH CLUB" meets Friday, July 28 at 1:00PM at Mountain Thai, 2741 West White Mountain Boulevard, Show Low. Everybody is welcome.

VOLUNTEERS NEEDED!

We urgently need volunteers for:

- ◆ Field Trip Coordinator
- ◆ Assistant Field Trip Coordinator
- ◆ Education Coordinator

Rock Talk Newsletter

Our newsletter is published monthly by the White Mountain Gem & Mineral Club, Inc. Any information or comments members wish to include in the monthly newsletter must be given to the editor at the general membership meeting or call the editor no later than Tuesday following the meeting.

Membership Dues

Membership dues are \$20 for a single membership and \$25 for a couple/family. (\$5 less if you receive newsletter by email.) Dues are paid in January each year along with a completed application form. Memberships initiated in November or later in a given year are also good for the following year.

Meetings

We meet the first Sunday of the month (unless it falls on a holiday) at the VFW Post 9907, 381 North Central Avenue in Show Low. Turn north off the Deuce of Clubs at Burger King. Social half hour at 1:00 PM, meeting starts at 1:30 PM.

ELECTED OFFICERS

Office	Name	Phone	E-Mail
PRESIDENT	Sandra Angelo	(928)537-3726	sandra_angelo@hotmail.com
VICE PRESIDENT	Carol Glick	(928)228 6202	malcarglick@yahoo.com
2ND VICE PRESIDENT	Rick Palmer	(928)333-5019	palmer57@frontiernet.net
SECRETARY	Debbie Christmas	(602)475-4714	Deb_xmas@yahoo.com
TREASURER	Carl Hickman	(928)536-3744	carlhickman8@earthlink.net
EDITOR	B.G. Hogarth	(928)532-3043 Cell-(775)397-2312	hogarths@citlink.net
FIELD TRIPS	Open		
	Open		

Members at Large

Dick Turpin	(480)240-0995
Terry Pollard	(480)431-0686
Ursula Wilson	(928)532-5703
Shirley Leistikow	(623)261-5752

Volunteer Positions

Webmaster/Coalition Chair	Aimee Webster	(602)503-8417	afwebster61@gmail.com
Show Chairman	Cathy Cargile	(714)348-9162	skyranch5734@yahoo.com
Assistant Show Chairman	Carl Hickman	(928)536-3744	carlhickman8@earthlink.net
Sunshine	Donna Pollard	480-600-2714	tdpollard@msn.com
Education, Schools	Open		
Greeter/Door Prizes/ Raffle	Thelma Gray/Diane Moten		
Auctioneer	Donna and Terry Pollard		
Highway Cleanup	Brookie/ Larry Embry	(928)537-0760	
Bonus Prizes	Sandra Angelo	(928)537-3726	
Historian	Donna Pollard	(480)600-2714	tdpollard@msn.com
Librarian	Rick Palmer	(928)333-5019	palmer57@frontiernet.net
Meeting Room Setup/ Cleanup	OPEN		

Chamber of Commerce Liaisons

Show Low: Thelma Gray

Springerville/Eager: Rick Palmer

Snowflake/Taylor: Open

Heber/Overgaard: Aimee Webster

WHITE MOUNTAIN GEM & MINERAL CLUB

MEETING MINUTES JULY 2, 2023

The meeting was called to order by President Sandra Angelo at 1:35PM and with the Pledge of Allegiance recited by members.

New member Myra Reese was welcomed, along with guests Wendy, David and Barbara Bayer, Lisa and Robert, Rick Olson, and Fred Bridges.

For Show and Tell Donna Pollard displayed some chalcedony. Sandra shared a golf ball discovered while looking for rocks on the field trip.

The June meeting minutes as appeared in the June edition of *Rock Talk* were accepted with no corrections or additions.

Tickets are on sale for \$5.00 each in the rolling raffle for a quartz crystal or a septarian bear. The first winner drawn will get their choice. The sale will continue through July and August with the drawing at the September meeting.

The club's financial report was presented by Treasurer Carl Hickman. See Page One in *Rock Talk* for further information.

For Board Reports Debbie announced that the Medieval Mayhem event is Friday July 7. We will be participating in the DaVinci Day educational program. Volunteers, please see Debbie to sign up for the time slot that you can attend.

Sandra reported that the club's participation in the Show Low Days event was very successful. She also talked about the June field trip and the trip planned for July, where we will be collecting jasper, agates, and petrified wood. (See Pages five and six in *Rock Talk* for further information.) She also mentioned that a volunteer is needed for the setup and teardown of refreshment area at our meetings.

Cathy Cargile gave an update on our show. Volunteers are still needed to fill in missing time-slots for the show. Your help is appreciated, even if you can only volunteer for a few hours. Please see Cathy to sign up. The banker bags vendor gifts have been received. Signs have been posted. Help is still needed to put posters and flyers out at local businesses. Raffle baskets are complete. Setup for the show will begin at 8:00AM on Thursday, July 13. Volunteers are needed at the storage unit to get tables, displays and other equipment. Vendors will begin their setup at noon and potluck for vendors will begin at 2:00PM.

Rick Olsen has several rock items available for sale, including buckets of various specimens, lapidary equipment, and a 14-inch saw. Fred Bridges has several rock specimens for sale and lapidary equipment for any club members who are interested. Please contact these individuals directly.

In the 50/50 drawing, the prize of \$44 was won by Terry Pollard.

Additional raffle items were won by Carl Hickman and Brookie Embry

The meeting was adjourned at 3:34PM. The next regular meeting will be held on Sunday August 6, 2023.

Respectfully submitted,

Debbie Christmas, Secretary





On Saturday June 12 several members of our club manned a booth at the annual Show Low Days Festival at Frontier Park. We were able to connect with a number of people, both adults and children with an interest in rocks, gems, minerals, fossils, and nature in general. A good time was had by all.



JULY FIELD TRIP

By Sandra Angelo

This is the month we venture to the Escudilla Mountains. The higher elevation makes it an excellent summertime destination. We will meet at the Dollar General at the Vernon/Concho Y at 8:00AM with an 8:15 departure. We will travel to Springerville by Western Drugs arriving about 9:00AM for anyone wanting to join us there, and departing at about 9:15. It would be helpful for someone who is familiar with the former claims to lead the caravan, otherwise it will be wrong way peach fuzz aka Sandra. Bring the usual stuff including water, lunch, insect repellent, hat, rain gear, etc. High clearance vehicles are a good idea. A sense of adventure and humor is a good idea too. Looking forward to seeing you there!



WHAT YOU MIGHT FIND THERE



Moss Agate



Petrified Wood



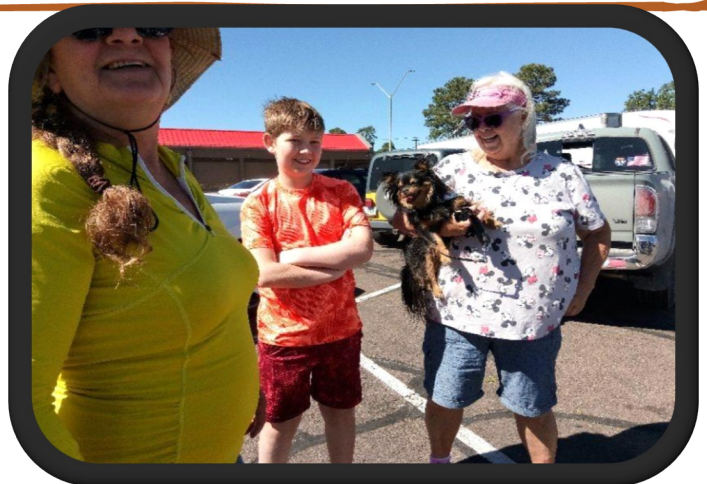
Photos By
 Judy Harrell
 And
 Terry Pollard

Article By
 Sandra Angelo

SEARCHING FOR TREASURE IN THE AWESOME AREA OF "SOMEPLACE ELSE"



Sixteen people joined our Pinedale adventure. Turkey Hill was our target. Unfortunately, I missed a turn and ended up someplace else. Some ventured to the top of the hill where we found gray/black petrified wood, agate, and some fossils. My most curious find was a golf ball! In any event, there were many RPRs (Real Pretty Rocks). Those who stopped a little lower found some very colorful petrified wood as well as the black wood with crystals. Mike found (tripped over) a hunk of wood (Arizona red) in the stream bed. It took two guys to put it in the truck! It is amazing the wonderful hunting grounds we have so close to home.



EDITOR'S NOTE: In an on-line search for info on Turkey Mountain, nothing came up. However, there is a great deal of information on Turkey Creek Trails, the photo above of one in the Coconino Forest, labeled Trail No. 92. Some of these trails go by ancient volcanoes, possibly a great place to go rock hunting, don't you think?



CRAFTY CORNER

By

Lidia Duvall

MANDALA ROCK PAINTING

Do you have round rocks? Paint a mandala on them for gifts or put a few in a dish for display! The mandala tools are very inexpensive for a set, or use a q-tip, nail head, new pencil eraser, manicure tools, etc. You will need three sizes for dotting.

SUPPLIES

*four colors of acrylic paint

*mandala tools

*q-tips and baby wipes

*varnish or spray sealer

*chalk to draw design and mark center.

Wash and dry your rocks. Begin by painting a base coat two to three times over the entire face of the rock and sides. Let it dry between coats. Mark the center with chalk and draw a cross or pie shape lines through the center. Paint a large dot in the center. Dot tiny dots of a different color around the center dot. Change color and dot another circle of dots around the last circle. Dot a large dot on cross lines. Do not dip your tool in paint and follow the cross lines and the dots will get smaller as you go. Let it dry. With a smaller dotting tool, dot on top of the dried dots with a different color, and so on. The patterns are endless, check out the internet for pictures or videos. You can also use a paint brush to add in swirls and petals. I have found that the right consistency of the paint is key. Water it down or let it dry out a bit. Gently wipe off the chalk if it is showing, then seal with a clear varnish or spray can sealer. Enjoy!!!



The finished product



Mandala Tools to be used in the process



ROCK OF THE MONTH

ARSENOPYRITE

By Donna Pollard



Arsenopyrite, (FeAsS), is a tin-white to steel gray mineral with a pink over-tone tint. It tarnishes to pink, brown, and copper shades, often with iridescence. The formula means it is an iron arsenic sulfide. The name comes from its resemblance to pyrite and the fact that it contains arsenic. This mineral was originally called Arsenical Pyrites, but over time that was contracted to Arsenopyrite. Another name for Arsenopyrite, first recorded in 1675-1685, is the German word "Mispickel."

Originally arsenopyrite was thought to belong to the orthorhombic crystal class, but that has been changed to the monoclinic class of crystals. Crystals of arsenopyrite are pseudo-octahedral to prismatic, striated, elongated, and often twinned, with the twinning cruciform (in the shape of a cross) or having a star shape. The best field marks are the tin-white color and star-shaped twinning.

With a hardness of $5\frac{1}{2}$ - 6, and a specific gravity (S.G.) of 5.9 - 6.2, arsenopyrite is a typical metal mineral. It is not super hard but is clearly heavy for its size. The luster on the crystal faces is metallic, the streak is black. It has an uneven fracture, brittle or fragile tenacity, and is opaque.

If heated, or struck with a hard object, arsenopyrite produces a smell reminiscent of garlic, and a spark. It is soluble in nitric acid producing sulfur, and if fused in a flame it produces a white gas smelling of garlic.

Arsenopyrite is the principal ore of arsenic, with gold, silver, and cobalt associated by-products. Besides these associated minerals, others that may be in association are pyrite, pyrrhotite, zinc, siderite, and chalcopyrite.

In the United States, fine crystals are found in Roxbury, Connecticut; Leadville, Colorado; and Keeseville, Essex County, New York. Granite pegmatites containing arsenopyrite are found in the Westinghouse Mine in Buckfield and Mt. Mica, Maine. Arsenopyrite is also found in the zinc deposits of Franklin and Ogdensburg, New Jersey; the Hayes-Stellite Mines, Lemhi County, Idaho; in the gold-quartz veins of the Sierra-Nevada, California; Franconia, New Hampshire; in the Homestake Mine, South Dakota; and in the Tres Hermanos mountains of New Mexico.

Canada has several fine locations for arsenopyrite, including Deloro, Ontario; O'Brien Mine, Cobalt, Ontario; and the Nickel Plate Mine, British Columbia. Sweden, Norway, Germany, England, Italy, and Mexico also have deposits of arsenopyrite.

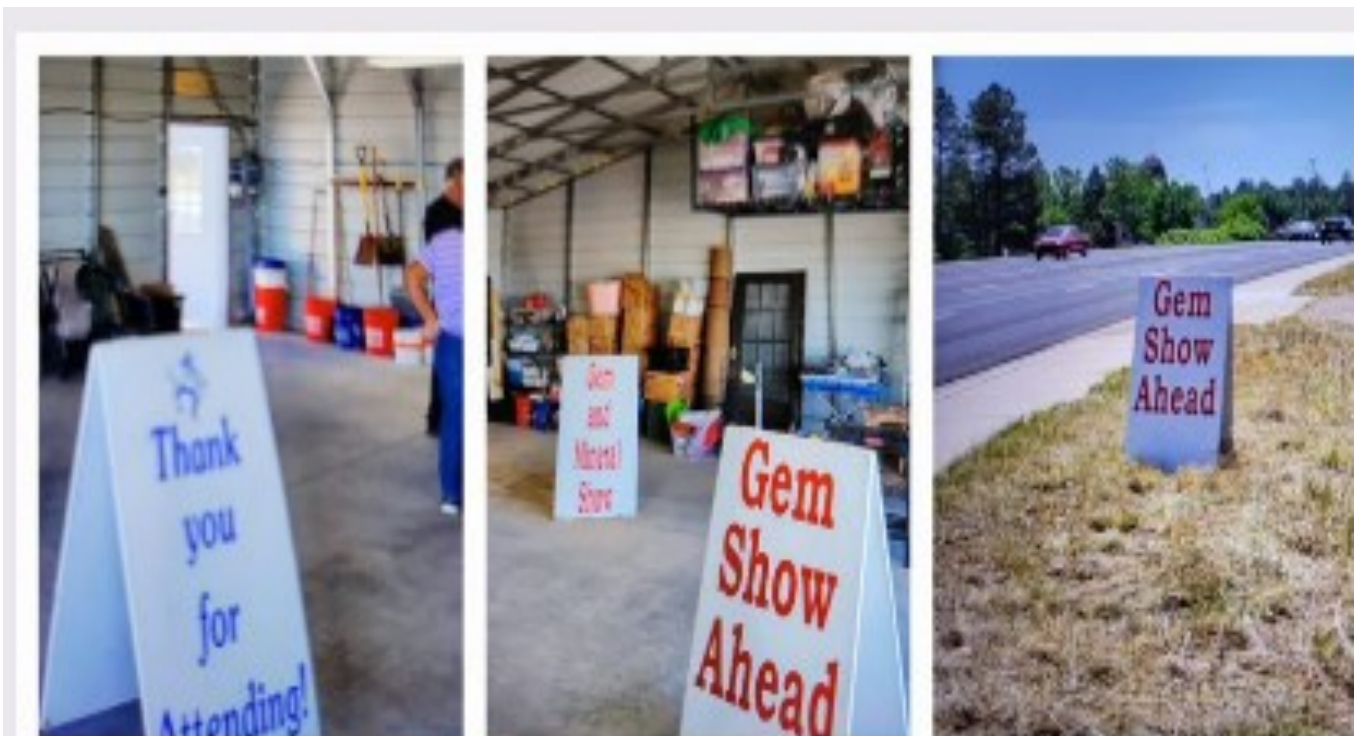
Like the calcite -siderite association from last month, the pyrite-arsenopyrite association this month makes me want to look through my collection and see if any arsenopyrites are hiding in the wrong group!



AROUND AND ABOUT IN THE MEETING ROOM



**IT'S BEGINNING TO LOOK A LOT
LIKE SHOW TIME--EVERYWHERE
YOU GO!**



White Mountain
Gem & Mineral Club
PO Box 3504
Show Low, AZ

