

ROCK TALK



White Mountain Gem & Mineral Club
P.O. Box 3504
Show Low, Arizona 85902
www.whitemountain-azrockclub.org
whitemtngmc@gmail.com

Vol. 28, Issue 10
October 2024

PRESIDENT'S LETTER

Happy Fall, all! The newsletter is late this month since BG took a well-deserved vacation. From the pictures I saw, it looked like she had a fabulous time.

We had a fun time at HarvestFest. Thank you, Terry, Cathy, and Ron. It is amazing the number of BIG kids who want to spin the wheel. A number of people took membership applications. We hope to see several new faces in the coming months.

Thank you, Brookie and Larry, for another successful highway cleanup. We found some interesting litter. Donna put the pictures in our 2024 memory book. Check it out for a good giggle. We also experienced an act of kindness. A gentleman driving by saw us hard at work. He returned just as we were finishing up with Gatorade for all of us! Thank you, kind sir!

Our 50/50 winner was Larry L. He donated his winnings back to the club with instructions to use the money for the kids in memory of Nanz. Thank you, Larry and Nanz!

It's election season again. You will find a ballot in the newsletter. Write-ins are permitted. Or you may nominate yourself at the November meeting. The new board takes over in January. All positions are available. You just need to let your interest be known.

Trivia - A screaming banshee, fast wild and free, a meteor rides the winds of the solar system until it hits Earth and comes howling through the atmosphere like a bolt from the blue. Named for where it lands, the meteorite offers clues about the materials that formed the planets in the solar system.

If you are not getting your newsletter, let me know. Send me your name and email address so I can follow up.

Have a terrific month.

Sandra

TREASURER'S REPORT

September Expense

None

Upcoming Expense

Newsletter

Webmaster Fees

Show Low Chamber Dues

2024 Show Reimbursements

Donation to Samaritan's Purse

Potluck Supplies

Income This Month

Memberships

Silent Auction

BULLETIN BOARD

The month is October
The air's turning cold;
The leaves are all changing
To red and to gold.

Happy Birthday To:

Othello Ayem	Sherry Martin
Debbie Christmas	Jeannine Russ
Lynn Erickson	Richard Russ
Carl Hickman	Dick Turpin
B. G. Hogarth	

**Why not join our
Let's Do Lunch Club**

Where: Lotus Garden
984 E. White Mountain Blvd
Pinetop

When: Thursday, October 31
12:00 noon

**Let's Celebrate our
October Birthdays!!**

IN THIS ISSUE

ITEM	PAGE
President's Letter/ Treasurer's Report	1
Notes of Interest/ Important Reminders	2
Club Information	3
Minutes of October Meeting	4
October Field Trip	5
Report on September Field Trip	6
Rock of the Month	7-8
Rock Cleaning Made Easier	8
Ballot for Officer Slate for 2025	9
ADDITIONAL PAGES	
Around and About at the Meeting	10
	11

**Last Names N-Z will supply
November's potluck**

DON'T FORGET!

The November meeting is when we vote for club officers for Year 2025. A ballot is printed on Page 9 for your convenience. Ballots will also be available at the meeting.

Editor's Note: A lady I know asked me if the club would be interested in acquiring her rock collection. I've not had time to inspect it yet & will have more information. She says she has agates, crystals, and others. I need a "rock expert" to accompany me to check it out. Any volunteers?

Rock Talk Newsletter

Our newsletter is published monthly by the White Mountain Gem & Mineral Club, Inc. Any information or comments members wish to include in the monthly newsletter must be given to the editor at the general membership meeting or call the editor no later than Tuesday following the meeting.

Membership Dues

Membership dues are \$20 for a single membership and \$25 for a couple/family. (\$5 less if you receive newsletter by email.) Dues are paid in January each year along with a completed application form. Memberships initiated in November or later in a given year are also good for the following year.

Meetings

We meet the first Sunday of the month (unless it falls on a holiday) at the VFW Post 9907, 381 North Central Avenue in Show Low. Turn north off the Deuce of Clubs at Burger King. Social half hour at 1:00 PM, meeting starts at 1:30 PM.

ELECTED OFFICERS

Office	Name	Phone	E-Mail
PRESIDENT	Sandra Angelo	(928)537-3726	sandra_angelo@hotmail.com
VICE PRESIDENT	Debbie Christmas	(602)475-4714	Deb_xmas@yahoo.com
2ND VICE PRESIDENT	Carol Glick	(928)228-6202	malcarglick@yahoo.com
SECRETARY	Shelly Applegate	(928)245-4300	shellylynn@gmail.com
TREASURER	Kim Whitley	(928)853-4455	kimwhitley@gmail.com
EDITOR	B.G. Hogarth	(928)532-3043 Cell-(775)397-2312	hogarths@citlink.net
FIELD TRIPS	Dick Turpin	(480)240-0995	
	Rick Palmer	(928)333-5019	palmer57@frontiernet.net

Members at Large

Dick Turpin	(480)240-0995
Terry Pollard	(480)431-0686
Ursula Wilson	(928)532-5703

Volunteer Positions

Webmaster/Coalition Chair	Aimee Webster	(602)503-8417	afwebster61@gmail.com
Show Chairman	Cathy Cargile	(714)348-9162	skyranch5734@yahoo.com
Assistant Show Chairman	Ursula Wilson	(928)532-5703	
Sunshine	Donna Pollard	480-600-2714	tdpollard@msn.com
Education, Schools	Open		
Greeter/Door Prizes/Raffle	Thelma Gray/Diane Moten		
Auctioneer	Donna and Terry Pollard		
Highway Cleanup	Brookie/ Larry Embry	(928)537-0760	
Bonus Prizes	Sandra Angelo	(928)537-3726	
Historian	Donna Pollard	(480)600-2714	tdpollard@msn.com
Librarian	Rick Palmer	(928)333-5019	palmer57@frontiernet.net
Meeting Room Setup/cleanup	Shelly Applegate	(928)245-4300	shellylynn@gmail.com

Chamber of Commerce Liaisons

Show Low: B.G. Hogarth

Snowflake/Taylor: Open

Springerville/Eager: Rick Palmer

Heber/Overgaard: Aimee Webster

WHITE MOUNTAIN GEM & MINERAL CLUB

MEETING MINUTES OCTOBER 6, 2024

The meeting was called to order by President Sandra Angelo at 1:31 PM with the Pledge of Allegiance. Members and visitors were welcomed. The minutes of the September meeting were accepted. Kim provided the treasurer's report indicating that club finances are doing very well. She is working very hard to understand our system and making sure everything is accurate and up to date.

Brookie thanked everyone who participated in the highway cleanup. We had a good laugh about some of the items that were found during the effort. She also told of the gentleman who saw the crew at work and returned with Gatorade for everyone.

Sandra indicated that the Rocky Mountain Federation has its annual convention this month. Because no representative from our club is attending, our proxy was sent to Marvin Sawaia (member of Payson Rimstones) who is attending.

HarvestFest is Saturday, October 12. Those participating should meet at the storage unit by 8:00 AM. We will load up and head to Snowflake. The event runs from 9:00 AM until 2:00 PM.

Any members who are not receiving their **Rock Talk** newsletter should let Sandra know. Include your name and email or mailing address.

This March (2025) our club will have a mini rock show at Melon Center in Concho. Cathy is coordinating this. Contact her if you want to participate in some way.

Our field trip this month (October 26) is to the Chilito Mine near Superior. (See Page 5 in **Rock Talk** for further information.)

A slate has been constructed for the 2025 elections. Please vote either by mail or at the November meeting. Feel free to throw your hat into the ring for any office of interest to you. (See Page 9 in **Rock Talk** for the ballot and instructions for mailing it in. Ballots will also be available at the November meeting, when voting will take place.)

Carl suggested that the club donate for hurricane relief. He had three charities in mind. Consensus was made to send \$1000 to Samaritan's Purse.

Dick Turpin reported on the September field trip to the Payson Rimstones' rock sale and then an afternoon of fossil gathering at the Indian Gardens Paleo Site near Kohls Ranch. (See Page 6 in **Rock Talk** for further information.)

Hope Rubi announced that the "Let's Do Lunch Bunch" will meet Thursday, October 31 at Lotus Garden. You are encouraged to come in costume. (See Page 2 in **Rock Talk** for further information.)

Larry won the 50/50 and returned the \$34 to the club to be used for children's activities.

Then next meeting is scheduled for November 3.

There being no further business to discuss, the meeting was adjourned.



OCTOBER FIELD TRIP

CHILITO MINE NEAR SUPERIOR, AZ

Field Trip Leader: Dick Turpin 480-240-0995

Date: Saturday, October 26, 2024

Location: The Chilito Mine is about 25 miles south of Superior, AZ east of Highway 177 near the town of Kearny.

Where and When We Will Meet: The first meeting point is at the Show Low Chamber of Commerce parking lot at 7:15 with a departure time of 7:30. The second meeting point will be in Superior at Los Hermanos Restaurant on Highway 60 at 9:30 AM. This is a two-hour drive from Show Low via Route 60 through Globe. Los Hermanos is a good place to have breakfast.

Recommended Vehicle: Any vehicle can make it to the meeting point. The last five miles to the mine are a steep uphill climb on a rocky mine road whose condition varies by the amount of recent rain. A 4WD high-clearance vehicle is recommended for this final stretch of the trip.

What we will collect: We will collect copper oxide minerals including chrysocolla, azurite, and malachite. These minerals are often found in chalcedony which makes them good for polishing by tumbling or cutting into cabochons.

Recommended Things to Take: Buckets, rock hammer, grabber, digging tools, water, lunch, sunscreen, heavy-duty shoes or boots.

Cell Phone Service: The cell phone service at the mine site is likely not very good.

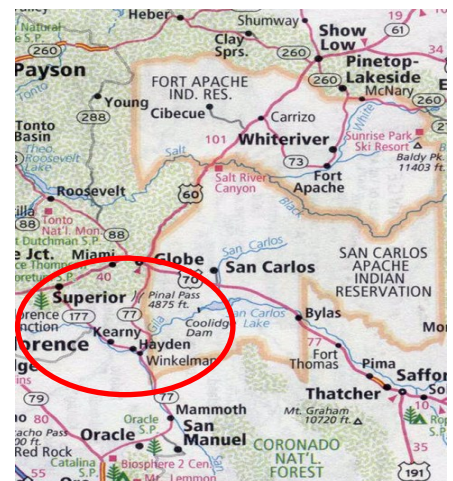
Directions to the Site: From Show Low drive west on Highway 60 approximately 90 miles to Globe. Turn right toward Miami on Route 60. Drive east about 20 miles to Superior and the meeting point on the left side of the highway. There is a rest stop in the same parking lot as Los Hermanos.

From the second meeting point the mine road is about 25 miles south on Route 177. The left turn is just on the north side of Kearny. Vehicles that are not suitable for climbing the gravel road to the mine can park either at the meeting point or at a parking area where the mine road leaves Route 177.

Reference YouTube Videos:

Chilito Mine - Arizona Rock and Copper Mineral Hunting - darkh2o

Several other videos showing the offroad exploration of the Chilito Mine Road. Search "Chilito Mine".



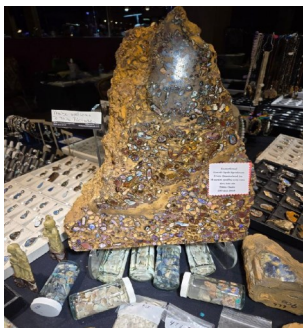
By
Dick Turpin

A FIELD TRIP TO REMEMBER— A ROCK SALE AND FOSSIL HUNT!

Photos by
Dick Turpin
and Donna Pollard

On September 21 eleven hard-core White Mountain rockhounds gathered at the Chamber of Commerce before driving to Payson for a morning of bargain hunting at the Rimstone annual rock sale and an afternoon of fossil gathering at the Indian Gardens Paleo Site near Kohls Ranch. The September weather was perfect for the trip. The motivations for visiting the rock sale varied among our members. Some were curious about what ideas our club might want to borrow from the Rimstones for our annual sale. Others sought out bargains from a wide range of exhibiting vendors. Several others tried their luck at the frequent door prizes and raffle drawings.

After two hours of exploring the exhibits at the Mazatzal Casino, the group moved about 20 miles east for hands-on collecting of 300-million-year-old marine fossils. After a short lunch break, the group spread out across the outcrop of the Naco Formation. This limestone deposit was deposited by a shallow sea that covered most of Arizona during the early Carboniferous Period. What the fossils lacked in size they made up for in quantity. The most abundant fossil was a brachiopod that resembled a nut. One member actually mistook a pistachio shell for a brachiopod fossil. The Latin name for this brachiopod is *Composita subtilita*. It was easy to picture a huge shallow reef containing billions of these small clam-like creatures. Other fossils we found included crinoids, sea fans, and several other brachiopod species.



Sample at the
Rock sale





ROCK OF THE MONTH

IGNEOUS ROCK

By Donna Pollard



This month we are examining igneous rock, and how this type of rock forms. When people think of igneous rock, they may picture a volcanic eruption, with molten rock spewing out of a mountaintop and running down to lower elevations. It is a good visual, because all igneous rock begins as a reservoir of melted rock deep underground. We call this molten rock magma. Heated by vast heat radiating from the center of our planet, any type of rock, whether sedimentary, metamorphic, or other igneous, if pushed down deep enough by dynamic action of the earth, will melt to a liquid. Think of these pools of magma as giant caldrons of chemicals, a melted chemical Periodic Table we learned of in high school.

Since heat rises, these magma chambers slowly rise-up through the mantle and into the crust of the earth. If conditions are right, and conduits to the surface are available, we have volcanoes. The magma, still molten, reaches the surface as a viscous, or thick, liquid, which, at the surface we call lava. Most volcanic action forms along cracks that exist in the crust and down into the mantle of the earth. These cracks are along boundaries between sections of the earth's surface called tectonic plates.

Our tallest and longest lines of mountains are volcanic igneous basalt, mostly found in ocean basins, formed as dark, iron-rich, mafic magma, reaches the surface of the earth. Certain places on earth are also igneous basalt but are not on tectonic plate boundaries. The Hawaiian Island chain is one such "Hot Spot". In our local area, we have much igneous basalt that reached the surface long ago through fissures that opened from deep in the crust and mantle. It is the thick black layer that sits above more common sedimentary rock in the area. The cinder cones that dot the area are also a form of basalt that cooled enough before eruption, that it erupted as small

pebbles, or cinders. On the San Carlos Indian Reservation are basaltic formations where we find olivine, and its gem quality version, peridot. These formations also erupted through fissures in the crust. In this case, parts of the magma chemicals combined while still underground to form crystals of the iron and/or magnesium-rich mineral olivine, before erupting onto the earth surface.

Sometimes tectonic plate boundaries are not in the ocean basins, but on edges of continents. When this happens, the original magma must travel mostly through continental crust. There the vast reservoirs of molten rock take on the chemical make-up of the continental crust. This means the magma is of a felsic variety, with much less iron and magnesium. This magma has much more silica (quartz). An example of volcanoes like this are the Cascade Range along the northwestern coast of the United States. The silica content makes these felsic volcanoes much more explosive than the ocean basin basaltic volcanoes. We saw this in the Mount Saint Helen's explosion compared to the more recent quieter lava flows in Hawaii. In our local area, the most prominent felsic volcanic range, not on a plate boundary, is the San Francisco Peaks, north of Flagstaff. Though most people believe the peaks are extinct, the geologic opinion is that the peaks are dormant (only sleeping).

Molten magma that forms igneous rock such as extrusive (exiting the earth) volcanoes, whether mafic, iron/magnesium-rich, or felsic, silica-rich, can also solidify underground. We call this type of igneous rock intrusive (inside the earth). One of the most common rock formations found on continents is granite. Here, the molten rock reservoir stalls in the continental crust. As the molten material melts through the crust, it incorporates more and more felsic-type chemicals from existing rock.

(Continued on next Page)

(Igneous Rock, continued)

Eventually the heat is low enough that the chemicals combine and form the crystals of quartz, various feldspars, mica, and others we find in granites. The chemical make-up of the molten material will determine what type of igneous rock will form. It could be granite, but there are many others that are possible. If a particular molten area of magma is saturated with specific chemicals, we may get the pockets of large crystals that all rockhounds hope to find.

This is just a short introduction to igneous rock. As in the introductions to sedimentary rock and metamorphic rock in the past few months, this is information that hopefully will help rock and mineral enthusiasts enjoy their hobby even more.



ROCK CLEANING MADE EASIER

By Rollo Pool

Are your crystals dirty? Does your neighbor have cleaner-looking agates- even inside vugs? Does your pressure washer launch your rocks into space? Do you wish to improve your cleaning game? Stop. Don't worry. The answer is a simple, electric gadget that can be bought on-line.

It is called a **Textile Cleaner** or a **Textile Cleaning Gun**- and it is an easy-to-use water-sprayer with a strong, fine spray. It gets into those hard-to-reach places that toothbrushes (hopefully one that you do not use) won't reach. It uses water, is lightweight, and easy to handle.

My wife Chris and I found this gadget greatly reduced our cleaning time and, as a bonus, was fun to use. Shortly after opening the box, we fought over using it - almost to the point I wanted to order another one. But we learned to share and did not need another.

We found ours on Amazon, where prices range from \$40 to \$85 for similar models. We bought one under the CKPSMS brand for \$57.

SAFETY: Wear gloves and goggles or a mask. Bits of dirt and grit and gunk will fly back to you. The spray has a high-velocity jet that will sting or remove skin.

TIPS

- Use it for 15 minutes and then let it sit for five or more minutes. The motor is not made for extended use without rest.
- Add oil every other use if there is a port.
- Do not use it on soft rocks, like sandstone, unless you want to etch your initials in it.

I am not sure why no one in our club ever mentioned these gadgets. Maybe they were saving all the fun for themselves. About ten folks in our Payson rock club purchased these after my infomercial. I should get a commission.



WHITE MOUNTAIN GEM & MINERAL CLUB

NOVEMBER 2024 BALLOT

OFFICERS AND BOARD FOR YEAR 2025

Members may bring the completed ballot to the November meeting. If mailing your ballot, please do so in time to be received **NO LATER THAN OCTOBER 31, 2024**. Please mark "Ballot" on the face of your envelope. Mail-ins will be opened during the November meeting by an ad hoc committee appointed by the president. Mail to: PO Box 3504, Show Low, AZ 85902. If you want to write a candidate's name in, please make sure you have received their permission to do so.

Please remember that write-ins are most welcome, but as stated above, make sure you have the permission of the person nominated.

Circle the name of the candidate of your choice and USE ONE BALLOT PER ADULT MEMBER.

ELECTED POSITIONS		WRITE-INS
PRESIDENT	Sandra Angelo	
VICE-PRESIDENT	Debbie Christmas Carol Glick	
SECOND VICE PRESIDENT	Debbie Trimble	
SECRETARY	Shelly Applegate	
TREASURER	Kim Whitley	
EDITOR	B.G. Hogarth	
MEMBERS AT LARGE (VOTE FOR FOUR)	Hope Rubi Ursula Wilson Dick Turpin Carl Hickman Terry Pollard	
FIELD TRIP CO-CHAIRS (VOTE FOR TWO)	Dick Turpin Rick Palmer	



AROUND AND ABOUT IN THE MEETING ROOM



Photos By
Donna Pollard

