

ROCK TALK



White Mountain Gem & Mineral Club
P.O. Box 3504
Show Low, Arizona 85902
www.whitemountain-azrockclub.org
whitemtngmc@gmail.com

Vol. 29, Issue 6
June 2025

PRESIDENT'S LETTER

WOW! Our attendance this month was an amazing 50! It was terrific seeing new members, guests, returning members and our regulars. With so many attending, it is an opportunity for more people to be involved with the operation of our club. Several members are doing two or more jobs. Some of us are tap dancing as fast as we can and can use some help.

This month you will notice that Rock Talk looks a little different. That is because BG is ill and is unable to fulfill her role as editor this month. Please send healing thoughts to BG. A "BIG THANK YOU!" goes out to Debbie Christmas who produced this month's newsletter.

Another successful highway clean-up! Perfect weather, comradery, and yummy cookies! This is another activity that can use a few more volunteers. Thank you Brookie, Larry, Donna, Terry, Debbie T., Mike, and me (but I am only there for the cookies).

Weather for our May field trip was perfect - not too hot, cold, or windy. Lots of jasper, petrified wood, and some fossils were found. It was a good way to begin our holiday weekend.

Thanks to Cathy and her team, the show is almost ready to amaze our public. Make sure you sign up for at least a 2 hour shift before, during, or after the show. While some are more able than others, everyone can do something.

We have a great outreach event coming up, July 11th. DaVinci Day at Medieval Mayhem is an exploratory adventure for kids. We will be there with our spinning wheel and lots of rocks to give away. Since our show is the following weekend, we will also be handing out show fliers. Help is needed for setting up and decorating the pop-up, manning the activity, and taking down the pop-up at the end of the day. Let me know if you are willing to play any part of that day. It really is a lot of fun.

Trivia: An Asian marvel, Jade is a milky-green mineral, often found along with Talc and Serpentine in Metamorphic schist. Once revered in Asian society, Jade was thought to hold cosmic energy making it a symbol of status and power. Many intricate ornaments have been carved from Jade.

Thanks for a super meeting. Enjoy the last of spring.

Sandra

TREASURER'S REPORT

May Expenses	Upcoming Expenses	Income This Month
Professional Fees for Tax Preparation New Member Badges	Rock Talk Printing & Postage Show Expenses	Member dues Donations Badge Payments Show Vendor Contracts Silent Auction, 50/50 Raffle

BULLETIN BOARD

Happy June Birthday

Sandra Angelo
Lidia Duvall
Lee Freyenhagen
Yvonne Garrett
Malcolm Glick
Jenna Hamilton
Leif Jentoft
Candis Mayper
Rick Palmer

Why not join our Let's Do Lunch Club

Where: Sapphire Restaurant
411 E. Main Street
Springerville

When: Thursday, June 26, 12:00PM

**Let's Celebrate Our
June Birthdays!**

IN THIS ISSUE

ITEM	PAGE
President's Letter/ Treasurer's Report	1
Notes of Interest/Reminders	2
Club Information	3
Minutes of March Meeting	4
Rock of the Month	5
Show Update	6
Field Trip Update	7
Adopt-A-Highway	8
Community Event - jewelry class	9
ADDITIONAL PAGES	
Other Gem Shows	10
Around About the Meeting Room	11

DON'T FORGET ...

Last names A-L will supply the potluck table for the July meeting.

Remember to bring to any items to be donated to raffle baskets, gift cards, etc.

Sign up to volunteer one or more days to make our Gem Show great. (Even a few hours before or after your planned visit will be appreciated.)

SAVE the DATE: WMGMC Gem Show is on July 18, 19, & 20. Set up on July 17.

Please share FLYERS with your friends and neighbors.

Rock Talk Newsletter

Our newsletter is published monthly by the White Mountain Gem & Mineral Club, Inc. Any information or comments members wish to include in the monthly newsletter must be given to the editor at the general membership meeting or call the editor no later than Tuesday following the meeting.

Membership Dues

Membership dues are \$20 for a single membership and \$25 for a couple/family. (\$5 less if you receive the newsletter by email.) Dues are paid in January each year along with a completed application form. Memberships initiated in November or later in a given year are also good for the following year.

Meetings

We meet the first Sunday of the month (unless it falls on a holiday) at the VFW Post 9907, 381 North Central Avenue in Show Low. Turn north off the Deuce of Clubs at Burger King. Social half hour at 1:00 PM, meeting starts at 1:30 PM.

ELECTED OFFICERS

Office	Name	Phone	E-Mail
PRESIDENT	Sandra Angelo	(928)537-3726	sandra_angelo@hotmail.com
VICE PRESIDENT	Debbie Trimble	(520)400-6527	dltrimble076@aol.com
2ND VICE PRESIDENT	Mike Soboleske	(952)242-6115	Fritso53@gmail.com
SECRETARY	Shelly Applegate	(928)245-4300	shellylynn@gmail.com
TREASURER	Kim Whitley	(928)853-4455	kimwhitley@gmail.com
EDITOR	B.G. Hogarth	(928)532-3043 Cell-(775)397-2312	hogarths@citlink.net
FIELD TRIPS	Dick Turpin	(480)240-0995	dickturpinaz@gmail.com
	Rick Palmer	(928)333-5019	palmer57@frontiernet.net

Members at Large

Hope Rubi	(928)228-8851
Terry Pollard	(480)431-0686
Ursula Wilson	(928)532-5703
Carl Hickman	(928)536-3744

Volunteer Positions

Webmaster/Coalition Chair	Aimee Webster	(602)503-8417	afwebster61@gmail.com
Show Chairman	Cathy Cargile	(714)348-9162	skyranch5734@yahoo.com
Assistant Show Chairman	Ursula Wilson	(928)532-5703	
Sunshine	Donna Pollard	480-600-2714	tdpollard@msn.com
Education, Schools	Open		
Greeter/Door Prizes/Raffle	Thelma Gray/Diane Moten		
Auctioneer	Donna and Terry Pollard		
Highway Cleanup	Brookie/ Larry Embry	(928)537-0760	
Bonus Prizes	Sandra Angelo	(928)537-3726	
Historian	Donna Pollard	(480)600-2714	tdpollard@msn.com
Librarian	Rick Palmer	(928)333-5019	palmer57@frontiernet.net
Meeting Room Setup/cleanup	Shelly Applegate	(928)245-4300	shellylynn@gmail.com

Chamber of Commerce Liaisons

Show Low: B.G. Hogarth

Snowflake/Taylor: Karen Hickman

Springerville/Eager: Rick Palmer

Heber/Overgaard: Aimee Webster

WHITE MOUNTAIN GEM & MINERAL CLUB MEETING MINUTES JUNE 3, 2025

The meeting was opened by Club President Sandra Angelo with the Pledge of Allegiance and opening remarks. The Club welcomed back our snowbirds and some new guests! Welcome to our rock loving guests Betsy Lafos, Barb Perez, and David Edgar. Welcome to our new members: Francine and Chris Lucero who moved here from Phoenix. They love rocks and brought in a mini boulder that they wanted to share and have some help identifying. Welcome back Tippy, Danielle and Myra.

The club is in need of help! Our Editor, BG, is unwell. Debbie C generously offered to produce the newsletter this month. Sandra expressed concern that the majority of club work is being done by a handful of people. This is worrisome because if something happens, the work either doesn't get done or Sandra ends up doing it herself. Everyone can do something. If more people do volunteer for the small things, it will lighten everyone's load.

For Show and Tell, Dick shared one of the lovely samples that he found at the exploratory field trip last month. He found a "fossilized pizza slice" with fossilized clams, too. Lynn shared a Rock and Mineral booklet with good pictures and descriptions. Since it is laminated, it is great for in the field.

Rollo went to Mt. Ida in Arkansas. For a small fee, you can find some beautiful quartz crystals. It's a short 18-hour drive and very close to Hot Springs. Mary made some rock trees. Tippy is teaching a wire wrapping jewelry class at NPC. (See more info on page 9.) Doug Wolfe dropped by to share information about the White Mountain Exploration Center in Springerville. Doug is a paleontologist and is tentatively scheduled to present a program in August.

The next field trip will be on June 21st to

Woodruff Butte for Petrified wood. We'll meet at Bashas' in Taylor at 7:30 am. This will allow cooler weather for collecting. Please let Dick know if you are coming via text or call 480-240-0995. (See page 7 in **Rock Talk** for more details.) There is no July field trip due to our Gem Show. The August field trip will be for fossils near Young where Dick found the 'pizza slice'.

Cathy announced tidbits we need to know for the upcoming gem show. Volunteers are needed for putting up signs, setting up and taking down the venue, different positions during the show, and volunteers for the potluck. Sign-up sheets are available for all the various tasks. Please sign up! We still need donations of tumbled rocks for the Kids Corner. Also needed are items for the raffle baskets; please get with Lynne. Note that we need volunteers! Next month there will be a sign up sheet for the Thursday Italian Themed pot-luck at the Gem show. (See page 7 for more information about the Show)

The "Let's Do Lunch Bunch" will meet at the Sapphire Restaurant in Springerville on Thursday, June 26 to celebrate club members' June birthdays. This is also a great time to visit the Dinosaur Exploration Center. For those of you who live farther out, you may want to carpool. The more, the merrier. (See Page 2 in Rock Talk for further details.)

For the monthly program, Dick and Mike shared their adventure to Utah!

Door prize of a quartz point, peridot, and a jasper point went to Loren, Charles, and Cathy. Greg won the 50/50 prize of \$62. Natalie and Hope also won door prizes.

There being no further business to discuss, the meeting adjourned at 3:35 PM.

Respectfully submitted,

Shelly Applegate, Secretary



ROCK OF THE MONTH

JASPER



J Jasper is a type of chalcedony. Jasper is more opaque and generally has a rougher grain and more porosity than other members of this family.

Jaspers are grouped by color patterns and other physical characteristics. Typical groupings are Picture (shown below), Banded, Brecciated, Dendritic, Egg Pattern, and Spider Web.

Flint and Chert are also types of Jasper. Jaspers are also grouped by location of occurrence, such as Blue Mountain Jasper (Oregon).

Typical of silicates, Jasper hardness ranges from 6 to 7. Jasper and other chalcedonies typically form at low temperatures as precipitates from silica-rich solutions.

Thanks to: Collecting Rocks, Gems and Minerals, Patty Polk, Krause Publications, Rocks and Minerals, Chris Pelland, Smithsonian Handbooks



SHOW UPDATE

By
Cathy Cargile
Show Chair

Great News!! We have 23 vendors and 73 tables contracted and paid for! Now we just need to deliver a terrific show with MANY public attending and buying from our awesome vendors. The majority of our vendors have been returning year after year due to the great sales they make and the great service we provide them.

Sign-up sheets are now available for you to volunteer some hours. Our club is a non-profit organization and is entirely run and operated by club members who volunteer their valuable time. Some jobs are physical, but many are seated and not physically taxing.

We will have our traditional potluck this year with a twist, for our vendors and volunteers. The food theme is Italian! Natalee has created a menu of items you may bring so please sign up at our July meeting.

We could use a few more volunteers for set up on Thursday and clean up on Sunday after the show. These are physical jobs but the more people who offer help the easier it will be.

One early bird person is needed for Friday, Saturday and Sunday to pick up donuts at the local Safeway and then make coffee at the Elks Lodge, before the vendors arrive at 8:00 a.m. Ideally the same person will do this each day, but it could be a different person each day.

We are looking for many volunteers who will sell admission tickets, man our raffle sales table, and man our membership table offering an invitation to join us on a rock trip and giving out pretty rocks to our guests.

Kids' Corner is such a delightful place to spend a few hours helping. Our future geologists and rock club members LOVE rocks almost as much as we do! We help them start or expand their rock collections and help them have fun with rocks. In Kids' Corner is our Spinning Wheel where kids of all ages get one spin for 50 cents or three spins for \$1.00. The prizes are really cool rocks, a few pencils and stickers and perhaps even a few fossils. Kids' corner still needs more tumbled rocks, especially if you can donate 50 or so of one type such as jasper, agate, chalcedony etc. The rock collections are started in egg cartons - 12 spaces only, not 18- and we need many more cartons!

All donations should be brought to the July meeting! This includes any prizes for the gift baskets, assorted tumbled rocks for the admission table and 25 or more of one kind of rock to be used in the kids' collections.

Please reach out with a text or phone call to Cathy 714 348-9162 to let us know what you are willing to do to help make this a terrific show. We APPRECIATE OUR VOLUNTEERS!

Field Trip Report - May 24, 2025

By Dick Turpin

On this beautiful May morning, about 20 club members gathered at the Dollar General Store at the "Y" on Route 61 east of town for a rock collecting adventure near Donna and Terry's house. Our fearless leader led the group in her highly visible yellow Jeep down the highway and through a short maze of gravel roads to the familiar sight.

Once there, the energetic gang lost little time spreading out and scrambling through the Junipers while searching out tumbled pieces of red jasper, quartz, and a wide variety of other rocks and minerals. Clearly, the rounded shape of most of the rocks indicated that we were searching through an ancient riverbed or some other environment involving fast-moving water. One of the members used their Rockd software to identify that we were hunting in the Dakota Formation. In such a geologic setting, there is almost no pattern to the distribution of the various materials. In addition to the rounded cobbles, some of the area was covered by recent (0-40 million years) volcanic lava from the Springerville volcanoes.

The one find that was out of character with the majority of the local rocks was several chunks of petrified wood. Most pieces were an inch or two, but a few were fist-sized and larger. What set them apart was the fact that they were very rough. This meant that they had not been moved around in water. The best guess was that they were eroded out of a strata above the Dakota. The wood looks very similar to that which we collect at Deer Springs.

As the day went by, the sun got hotter and most of the group headed for home. However, a good time was had by all, as usual.



JUNE FIELD TRIP PETRIFIED WOOD

Trip Leader: Dick Turpin
Phone/text: 480-240-0995
Email: dickturpinaz@gmail.com

Date: Saturday, June 21, 2025

Location: Collection site north side of Woodruff Butte.

Where and When We Will Meet: We will meet at the Bashas' Market in Taylor at 7:30 am and depart around 7:45 am

Recommended Vehicle: Any vehicle can make it to the collecting area. The last half mile may be rough and require some members to ride in high clearance vehicles.

What we will collect: We will be collecting colorful petrified wood.

Recommended Things to Take: Bucket, rock hammer, grabber, digging tools, water, lunch, sunscreen.

Cell Phone Service: The site is moderately remote and likely has very weak to no cell service.

RSVP REQUIRED. If you plan to attend a field trip, we are asking you to notify the field trip leader either by text, email, or phone and include how many folks will be in your group.

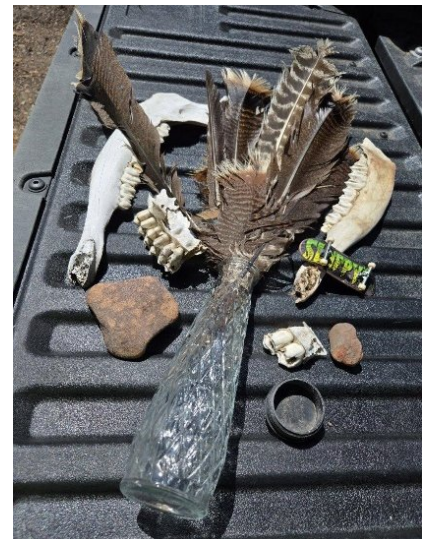
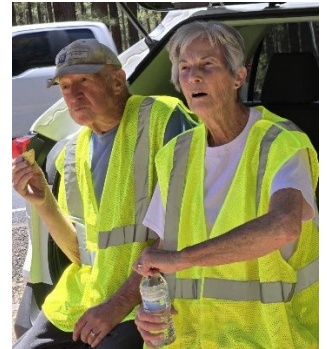
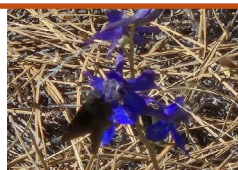
Adopt-a-Highway

Did you know that the White Mountain Gem and Mineral Club has a little part of the highway that we have dedicated to keep beautiful?



On May 17, 2025, a fearless crew set out on Highway 60 southwest of Show Low to make our highway beautiful. They were ready with their hats, sunglasses, safety vests, gloves, pickers and trash bags to walk the one-mile highway shoulder that was adopted by our club. This adventure happens twice a year and there is always a great mystery as to what we may find along with the obvious trash that is discarded. There were animal bones, feathers, a mini skateboard, as well as wild flowers discovered. The time passes quickly with good friends, community service, and, of course, Brookie's home-made cookies. This is a great cause as we are proud to keep Arizona looking great. A BIG thanks to those who turned out to volunteer: Brookie, Larry, Donna, Terri, Debbie T, Mike S, and Sandra.

Please consider joining us at the next Highway Clean-up day!



JEWELRY MAKING CLASS taught by our very own TIPPY!!



Northland Pioneer College
COMMUNITY & CORPORATE LEARNING

Summer 2025

VIKING CABACHON NECKLACE

JEWELRY MAKING CLASS

TUES. JUNE 10, 9A-12P

\$70

ALL MATERIALS PROVIDED

**WHITE MOUNTAIN CAMPUS,
SHOW LOW**



928-536-6244



ccl@npc.edu



npc.edu/noncredit-classes

PUBLIC NOTICE OF NON-DISCRIMINATION: NORTHLAND PIONEER COLLEGE DOES NOT DISCRIMINATE ON THE BASIS OF RACE, COLOR, NATIONAL ORIGIN, VETERAN STATUS, RELIGION, MARITAL STATUS, GENDER, AGE OR DISABILITY IN ADMISSION OR ACCESS TO, OR TREATMENT OR EMPLOYMENT IN ITS EDUCATIONAL PROGRAMS OR ACTIVITIES. DISTRICT GRIEVANCE PROCEDURES WILL BE FOLLOWED FOR COMPLIANCE WITH TITLE IX AND SECTION 504 REQUIREMENTS. THE AFFIRMATIVE ACTION COMPLIANCE OFFICER IS THE CHIEF HUMAN RESOURCE OFFICER, 2251 E. NAVAJO BLVD., HOLBROOK, ARIZONA 86025, (928) 524-7471. THE SECTION 504 COMPLIANCE OFFICER IS THE COORDINATOR OF THE OFFICE OF ACCESSIBILITY AND INCLUSION, 1611 S. MAIN SNOWFLAKE, AZ 85937, (928) 536-6246. THE LACK OF ENGLISH LANGUAGE SKILLS WILL NOT BE A BARRIER TO ADMISSION AND PARTICIPATION IN VOCATIONAL EDUCATION PROGRAMS.

More GEM SHOWS

(Taken from Rock & Gem Magazine)

June 2025

6-8—PHOENIX, ARIZONA: Annual show; Mineralogical Society of Arizona; Phoenix Shrine Auditorium, 552 N. 40th St; Fri. 10-6, Sat. 10-6, Sun. 10-4; \$10 Adults / \$5 veterans, seniors & students / Children 12 and under free with paid adult; Show Theme: Copper. Contact Cameron Reichert, (602) 334-7599; Email: marketing@msaaz.org; Website: www.msaaz.org/phx-heritage-show

July 2025

11-13—DURANGO, COLORADO: Annual show; Four Corners Gem & Mineral Club; La Plata County Fairgrounds Event Center, 2500 Main Avenue; Fri. & Sat. 10-6, Sun. 10-4; \$5 adults. Children under 12 free with an adult. Gems, minerals, fossils, jewelry, and more. 60+ vendors. Indoor/outdoor booths, gem panning and geo cutting for kids, food trucks. Contact Cindy Pugsly; Email: info@durangorocks.org; Website: www.durangorocks.org

August 2025

1-3—PRESCOTT VALLEY, ARIZONA: Annual show; Prescott Gem & Mineral Club; Findlay Toyota Event Center, 3201 N Main Street; Fri. & Sat. 9-5, Sun. 9-4; \$5 adults; \$4 seniors, vets, students, kids free under 12 with paid adult; Over 75 vendors offering gems, mineral specimens, beads, slabs, cabochons, crystals, fossils, gem rough, meteorites, & jewelry. Lapidary and jewelry making demos/ classes, kids' area, fluorescent exhibit, raffle & more; Contact Doreen Clark; Email: doreenphx@gmail.com; Website: prescottgemmineral.org

8-9—ALBUQUERQUE, NEW MEXICO: Show and sale; Turquoise United; Indian Pueblo Cultural Center, 2401 12th Street NW; Fri. 10-4, Sat. 10-4; The Turquoise Gem Show is Free; All other events require registration; contact John Ancona, (602) 320-1601; Email: johnancona@pm.me; Website: <https://turquoiseunited.com>

29-31—SILVER CITY, NEW MEXICO: Annual show; Grant County Rolling Stones; Grant County Veterans' Memorial Business and Conference Center, 3130 Highway 180 East; Fri. 11-5, Sat. 10-5, Sun. 10-4; Free; 40th Annual Rock and Mineral Show, Vendors, displays and kids activities; Contact Anita Williams, (907) 830-0631; Email: jaspermerlin4@gmail.com

AROUND and ABOUT in the MEETING ROOM



JUNE 2025

ROCK TALK

White Mountain
Gem & Mineral Club
PO Box 3504
Show Low, AZ **85902**

