

# ROCK TALK



White Mountain Gem & Mineral Club  
P.O. Box 3504  
Show Low, Arizona 85902  
[www.whitemountain-azrockclub.org](http://www.whitemountain-azrockclub.org)  
[whitemtngmc@gmail.com](mailto:whitemtngmc@gmail.com)

Vol. 29, Issue 4  
April 2025

## PRESIDENT'S LETTER

What a terrific meeting! Welcome new members Chris and Chooch, Carrie, Bee, Dawn, Barbara and Caiden. Welcome back Mary Alice, Rick, Kim, and Ken.

We had two outreach events this month. Carl had a table at the STEM fair showing how rocks were processed—from rough rocks to cool stuff. The other event was our Mini Gem & Mineral Show. Thank you Cathy and team! The Concho Community Center wants us to do this again. We just need someone to lead the effort. Cathy has put together documentation for "How to put on a mini-show!" And she will guide you along. So be a hero and raise your hand.

Thank you, Rollo, for leading the field trip this past month to Joseph City. We had a number of new members and older members join us. Everyone was tired but smiling at the end of the day. I was going to talk about the one that got away, but Darren was determined to take home the prize. His little treasure weighed about 200 pounds!

Thank you, Ron, for a super presentation. It's good to know what to watch out for when we are in the field. As you said, the Spanish were not nice people when it came to protecting their gold mines. We now know what to look for so we don't take a misstep.

Save the date: May 17 Highway Cleanup and Brookie's cookies!

Do you want to learn more about rocks? Of course you do. That's why you are a member of our club. How about being a monthly contributor to Rock Talk by writing the "Rock of the Month" column. Donna needs to step away through the end of the year to finish school. You don't need to be a geologist. There are lots of resources on line. Let me know if you want to give it a try. Thanks.

Trivia: Conglomerate means "a gathering of different things." It is a sedimentary rock made up of leftover rocks - those that have been broken and carried away by rivers, waves, glaciers, earthquakes and landslides encased in a stew of finer particles. A well-rounded fellow commonly known as puddingstone, the size of the pebbles show how far it has traveled. Well-sorted rounded pebbles will have trekked a greater distance from the original source.

Have a great month!

Sandra

## TREASURER'S REPORT

### March Expense

Rock Talk Printing & Postage  
PO Box Renewal  
Concho Can Donation  
Member Badges  
Science Fair Donation

### Upcoming Expense

Rock Talk Printing & Postage  
Tax Preparation  
Web Master Fees  
Show Low Museum Donation

### Income This Month

Member Dues & Donations  
Silent Auction  
50/50 Raffle  
July Show Vendor Contracts  
Donations from Mini Show

# BULLETIN BOARD

## Happy April Birthday to:

Shelly Applegate  
 Randy Beecroft  
 Ginger Donohue  
 Judy Harrell  
 James Jacobs  
 Cheryl Park  
 German Sierra  
 Debra Trimble  
 Kim Whitley  
 Ursula Wilson

## Why not join our Let's Do Lunch Club

Where: Buffalo Nickel Brewery  
 402 N. Clark Rd, Show Low

When: ~~Friday~~ April 25, 12:00PM

Let's Celebrate Our  
 April Birthdays!!

## IN THIS ISSUE

ITEM	PAGE
President's Letter/ Treasurer's Report	1
Notes of Interest/Reminders	2
Club Information	3
Minutes of March Meeting	4-5
Report on March Field Trip	5-6
Personal Rock Collections Sales	6
Rock of the Month	7
Mellon Center Mini Show Report	8-9
April Field Trip	9
<b>ADDITIONAL PAGES</b>	
Photos of Mellon Mini Show	10
Local Rock & Gem Show Schedule	11

## DON'T FORGET...

Last names A-L will supply the potluck table for the May meeting

Rock Talk needs a volunteer for temporary "Rock of the Month" contribution.

We are always looking for new areas to find treasures. If you know of a great place, speak up!

The Payson Rimstone's one-day sale this Saturday, April 12, 9:00AM-3:00PM

East end of Basha's mall. Cash only. Rick Olson will have fluorescents from seven states and four foreign countries.

Call Rick at 928-892-3481 for more information.

## Rock Talk Newsletter

Our newsletter is published monthly by the White Mountain Gem & Mineral Club, Inc. Any information or comments members wish to include in the monthly newsletter must be given to the editor at the general membership meeting or call the editor no later than Tuesday following the meeting.

## Membership Dues

Membership dues are \$20 for a single membership and \$25 for a couple/family. (\$5 less if you receive newsletter by email.) Dues are paid in January each year along with a completed application form. Memberships initiated in November or later in a given year are also good for the following year.

## Meetings

We meet the first Sunday of the month (unless it falls on a holiday) at the VFW Post 9907, 381 North Central Avenue in Show Low. Turn north off the Deuce of Clubs at Burger King. Social half hour at 1:00 PM, meeting starts at 1:30 PM.

## ELECTED OFFICERS

Office	Name	Phone	E-Mail
PRESIDENT	Sandra Angelo	(928)537-3726	sandra_angelo@hotmail.com
VICE PRESIDENT	Debbie Trimble	(520)400-6527	dltrimble076@aol.com
2ND VICE PRESIDENT	Mike Soboleske	(952)242-6115	Fritso53@gmail.com
SECRETARY	Shelly Applegate	(928)245-4300	shellylynn@gmail.com
TREASURER	Kim Whitley	(928)853-4455	kimwhitley@gmail.com
EDITOR	B.G. Hogarth	(928)532-3043 Cell-(775)397-2312	hogarths@citlink.net
FIELD TRIPS	Dick Turpin	(480)240-0995	
	Rick Palmer	(928)333-5019	palmer57@frontiernet.net

## Members at Large

Hope Rubi	(928)228-8851
Terry Pollard	(480)431-0686
Ursula Wilson	(928)532-5703
Carl Hickman	(928)536-3744

## Volunteer Positions

Webmaster/Coalition Chair	Aimee Webster	(602)503-8417	afwebster61@gmail.com
Show Chairman	Cathy Cargile	(714)348-9162	skyranch5734@yahoo.com
Assistant Show Chairman	Ursula Wilson	(928)532-5703	
Sunshine	Donna Pollard	480-600-2714	tdpollard@msn.com
Education, Schools	Open		
Greeter/Door Prizes/Raffle	Thelma Gray/Diane Moten		
Auctioneer	Donna and Terry Pollard		
Highway Cleanup	Brookie/ Larry Embry	(928)537-0760	
Bonus Prizes	Sandra Angelo	(928)537-3726	
Historian	Donna Pollard	(480)600-2714	tdpollard@msn.com
Librarian	Rick Palmer	(928)333-5019	palmer57@frontiernet.net
Meeting Room Setup/cleanup	Shelly Applegate	(928)245-4300	shellylynn@gmail.com

## Chamber of Commerce Liaisons

Show Low: B.G. Hogarth

Snowflake/Taylor: Karen Hickman

Springerville/Eager: Rick Palmer

Heber/Overgaard: Aimee Webster



# WHITE MOUNTAIN GEM & MINERAL CLUB

## MEETING MINUTES APRIL 6, 2025

**T**he meeting was called to order by President Sandra Angelo at 1:30PM. She extended a welcome to all and introduced new and returning members. Chris and Chooch, Carrie Clummet, and Barbara and her grandson were welcomed as new members. Returning members included Caiden and Rick Peach, Kim and Ken Burd, Bee Kennedy, and Mary Alice.

Sandra led us in the Pledge of Allegiance.

Details of the April field trip are not definite. A multi-day trip was suggested; however, it was too short of notice. (See Page 9 in **Rock Talk** for the final decision on the field trip.)

Announcements: Sandra said that her March concert was a success and announced the symphony's next concert will be on June 7 in Show Low. The STEM fair was held virtually this year with the awards ceremony in Snowflake. Carl set up a table to promote geology and our club and gave out some rocks. An upcoming event is our semiannual highway cleanup on Saturday, May 17. We will meet 9:00AM at the Show Low Chamber of Commerce parking lot. Wear sturdy shoes, bring water, and plan to enjoy some of Brookie's famous cookies after the cleanup is done.

For Show and Tell, Ursula shared her painted bunny on sandstone that she made.

Hope Rubi invited all to join the Let's Do Lunch Club this month at Buffalo Nickel. This restaurant has long donated gift certificates to our annual gem show. (See Page 2 in **Rock Talk**.)

Sandra showed the local newspaper with a great article and photo of our Mellon Center Mini Show. This article was a huge help in getting public to the event and our thanks go out to Gail Golden, board member of Mellon Center, for her help and expertise in publishing this. Cathy talked about the success of the mini show which resulted in happy vendors, guests, and food truck service. Brookie and her sister hit a historic mark of selling out all their trees of life.

(See Pages 8-10 in **Rock Talk** for more insight into the mini show.)

Donna announced the need for specimens for silent auction and prizes as the stock in our storage unit is very depleted. She suggested a purchase from the Payson Rimstones one-day sale on Saturday April 12, 9:00AM to 3:00PM, located at the east end of the Basha's Mall. Cash only.

Greg agreed to coordinate an effort for a storage unit clean out.

Starting next month, Donna needs someone to temporarily take over the rock-of-the-month article for our newsletter until January 2026.

The door prize drawing for three amethyst geodes was won by Loren Wright, Mike Sobeleske, and Hope Rubi.

An educational program on mine safety was presented by Ron Ream. A slide presentation showed signs and symbols the Spanish used in years gone by to keep people out of their mines. He showed diagrams and photos of how some rocks, when moved, can crush invaders to death. This setup by very early Spanish miners was to protect their gold. Ron mentioned that so many rockhounds, hikers, gold miners and other casual visitors to our southwest deserts get curious about mines and do not know how to avoid tragedy. The business meeting started at 2:49 PM with the 50/50 drawing and the raffle.

The March meeting minutes were approved and accepted without change.

Treasurers report we are flush! The club made some donations during the month. (See Page One in **Rock Talk**).

The July Gem Show Update was given by Cathy. The July show planning is going well. There are only four more vendors who need to pay and send in their signed contracts. We have some vendors on the waiting list.

(Continued on Page 5)

*(Minutes, continued from Page 4)*

Cathy asked all members to be thinking about how they wish to contribute to the gem show as we will take up more detailed planning next month. Anyone who has promotional skills please volunteer to help.

We were reminded to make sure our non-profit notice is on all our promo material.

There being no further business to discuss, President Sandra Angelo adjourned the meeting at 3:02PM.

Respectfully submitted by Cathy Cargile

On behalf of Shelly Applegate Secretary



## PETRIFIED WOOD— AGATES—AND A FOSSIL—OH MY!

By Rollo Pool

On Saturday March 22, twenty raring-to-go White Mountain rock club members joined me in Joseph City to visit places visited by clubs and a couple that were new. We picked petrified wood at two locations and ended the day picking rounded agates that were plentiful and varied in size and colorations. Weather was perfect—temps in the low 70's and light winds.

The WMGMC has visited this area before to find the typical white-black brittle petrified wood pieces. Today club members were in for a treat: the wood found there was mostly red with variations of yellow, green, and black. Pieces ranged from thumb-size, tumbler-size to slab-cutters weighing several pounds. They take a high polish. In one location, we found a nice sponge fossil embedded in brown chert.

This is one of my favorite pet-wood locations and I explore as often as I can (3-5x a year), when not too hot, not too cold and not too windy—which is most of the year. Spring and Fall are best. Start early to avoid the afternoon blows. I have marked more than two dozen BLM sites with petrified wood pieces (some colorful, some black and white, some with quartz drusy) and, occasionally, logs. Unfortunately, some sites do not have quantities large enough for clubs. Land ownership is a checkboard of state trust, private and BLM lands, so use of a GPS-enabled device showing the land-owner patterns that can vary each mile is advisable. This area also is not far from the Navajo Nation—where no picking is allowed.

*(Continued on Page 6)*





*(Petrified Wood, Continued)*



One site spied from a Google-Earth photo appeared to show dozens of logs. When I finally reached it by 4wd and by foot, it turned out to be a graveyard for dryers, washing machines, and fridges—hundreds of them. If you need spare parts, contact me for directions!

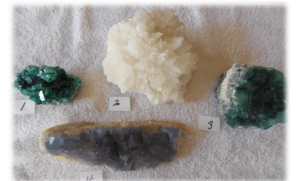
Lastly, Joeseeph City (pop 1300) is named after Mormon pioneer Joseph Smith (you guessed it) who probably never visited. Settlers came in the 1870's and first named the location Allen's Camp. It later became known as St Joseph, and finally Joseph City. Now you know.

## PERSONAL ROCK COLLECTIONS UP FOR SALE

**O**ur club has been gifted with notice of two rock collections up for sale. They are as follows:

**DIANE MOTEN** minerals for sale. 541-283-3600 or 512artemis@gmail.com

1. Fluorescent green fluorite cluster. Diana Maria Mine, England
2. Fluorescent Scalenohedral calcite crystals on Pyrite, Huanzala Mine, Peru
3. Fluorescent green fluorite cluster, Mandrosonoro, Madagascar
4. Bingham Blue long slab, Blanchard Mine, pre 2000, New Mexico



**From Mary Alice Vertz, of Vertz Ranch:**

**For Sale:** Three lifetimes of rock collecting & jewelry making (Grandpa, Dad, and me) -

**Saturday, May 3, 10-3:** petrified wood, blue agate, crystals, jaspers, fossils, collection specimens, cabs, slabs, +++; also cutting/grinding equipment, jewelry making supplies. Cash only - \$1.00 - \$1,000. VERTZ Ranch, 7949 Pence Drive - from Show Low, N on Hwy 77, turn right on White Mountain Lake Road; o/a  $\frac{1}{2}$  mile turn left on Woodside Trail (graded dirt); o/a  $\frac{1}{2}$  mile turn right on Grandview (ungraded dirt); past Bakker Drive on left then turn left on Christopher Trail; o/a  $\frac{1}{2}$  mile, turn right on Pence Drive; take next driveway on right.



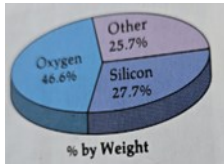
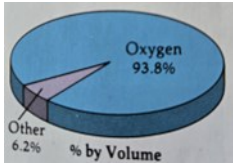
# ROCK OF THE MONTH

## QUARTZ

By  
Donna Pollard



**W**e are lucky to live in a place where there is a wealth of variations of silica ( $\text{SiO}_2$ ). The more familiar and common name for silica is quartz, the name of the silica mineral. When we go out rock hunting, the most common rocks we pick up have silicon (Si) and oxygen ( $\text{O}_2$ ) in them. This is because silicon and oxygen make up 74.3 percent of the weight of the Earth crust, and more than 94 percent of the volume of Earth's crust. It is no mystery why there is so much quartz available to find.



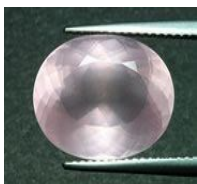
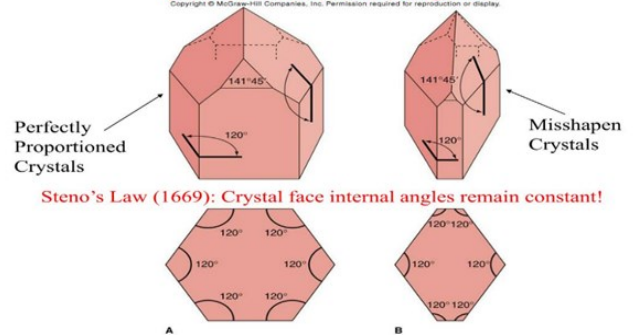
Quartz can be found as macro quartz, where we can see the crystal faces without aid, just by sight. These macro crystals may be small, like the ones we often find at Diamond Point, Payson; or giant, like the beautiful quartz crystals in Brazilian

geodes. No matter how big or small these crystals are, the angles between the crystal faces are the same. As minerals cool and grow from molten magma in voids underground, they compete for space. This is the reason mineral crystals often appear distorted, and not perfectly shaped. Still, the angles for each specific mineral example, such as quartz, never change. There are many varieties of macro quartz; transparent rock crystal, purple amethyst, pink or rose-red rose quartz, yellow citrine, brown smoky quartz, and milk-white milky quartz, and others.

The mineral quartz can also be micro crystalline. We call it chalcedony. Micro crystalline means that although the same silica crystals are there, with the same angles between the crystal faces, they are too small to see with the naked eye, sight aids are necessary. Like macro quartz, there are many varieties of micro quartz. Carnelian and sard are red to brownish red, sardonyx and onyx are layers of the carnelian and sard. Heliotrope and blood-stone are green with red spots. Agate is variegated (various uneven colors) and often in layers, but always translucent. Jasper is opaque (no light gets through), and of various colors. Moss agate has tree-like inclusions in the mineral. Flint and chert are often included in this list, but form from different sedimentary processes. Flint is opaque, and gray to black in color. Chert is yellow, light brown, or greenish, a lighter color than flint. They are both termed crypto crystalline, where the crystals "line up" in rows.

From the northern shores of the Great Lakes, to the floors of Tampa Bay, Florida, from the beaches of South Carolina to the deserts and mountains of the western states, chalcedony is common, varied and beautiful, as is all quartz.

### Quartz Interfacial Angles



**Rose Quartz:**  
the pink  
variety of  
quartz



**Amethyst:**  
the purple  
variety of  
quartz



**Aventurine:**  
a sparkling,  
translucent  
quartz



**Citrine:** the  
yellow to  
orange  
quartz





# A HUGE SUCCESS!!!

## OUR MELLON CENTER MINI GEM SHOW



**G**uests began arriving before the doors officially opened and the crowd kept coming!

The show was a success for all involved, including our club member vendors, Mellon Center, the two food trucks (Moon Dog and Smoke Show BBQ) and our guests!

The show was very well advertised by the "Save the Date" notices, the 5x7 flyer/posters that were handed out and or posted, a 4x8 plywood sign we placed in front of Mellon Center in March, notices sent out in the weekly "Concho Can" email of their activities, and a newspaper article arranged by Gail Golden of the Mellon Center BOD. 180 flyers went out to the staff and students at Concho School and Debi Seipp who works there made announcements to remind all to attend.

Our volunteers were outstanding! Huge thank you to:

Terry and Donna for putting up our sign, creating the fluorescent display, the display of "food" rocks and many rock birds, and the copper ore display and sale. They helped prepare for the show and then returned later to take everything down even though they could not be at the show itself.

Other big helpers were Debbie C. and Othello, who got us a great deal on printing our promo! Greg Wyman, who painted the lettering on our 4x8 sign. Ron C. who bought the plywood and painted the white background on the sign. BG was instrumental in getting promo created for use in signing up people for attending field trips. Debbie Trimble and BG gathered 28 individual and family requests to be invited to an upcoming field trip. BG has created an email list to notify these people and will receive their RSVPs and then make sure the field trip leaders have the information. Debbie and BG also sold three paid club memberships!

Blue created a truly rockin' game of Arizona Rock Bingo, jumbo size, for the guests to play! It was a hit and very educational!

(Note: it might be worthy of taking time to play the game at one of our club meetings.) Though not a vendor, she dedicated time to creating this game.

Kim and Garrett had the spinning wheel table and also had some great educational illustrations for the kids to color. It was a popular activity as noted by their donation jar with \$23 in it!

Carl donated a jar of tumbled rocks for the Spinning Wheel that can also be used at our July show.

Mike helped with set up for the show on Friday and came Saturday to help with dismantling, carrying things to cars for our vendors, and making sure the room was clean at the end. He also donated some cool rocks to be sold or given away which earned \$32 for the club.

Christy helped in reception, selling rocks that Mike donated, and in other ways. Maria was very helpful as a floater with Blue's Rock Bingo, helping Steve, Debbie C., and more.

Judy sold Donna's copper ore rocks, greeted guests, gave out and sold rocks, earning us \$57. Cathy created a display of metamorphic, sedimentary and igneous rock.

Our club member vendors did very well! Lidia reported good sales from her nice crystal display. Debi S. had a display of polished rocks, rubber snakes and information on several types of rocks for guests to review. Loren Wright set up a beautiful table that included gold nuggets, meteorites and pyrite.

Besides lovely specimens and jewelry, Debbie C. had a kids' coloring table with illustrations donated by Loren. Evva sold corals and some brightly patterned dogs (maybe paper mâché').

(Continued on Page 9)



**(Mini Gem Show, Continued)**

Gold Prospectors Club showed guests how to pan for gold. They also sold a few memberships. Ron R. demonstrated the use of dousing rods and got some sales.

Brookie E. and her sister were the star vendors selling out their ENTIRE STOCK of Trees of Life! This may have been the first time a vendor at a show sold out all their stock!

Steve (new member) had a large collection of emeralds in a variety of matrix from Columbia. Natalie N. had beautiful and valuable specimens and was pleased with her sales.

It was great to see some of our Club Member attendees including: Ursula, Hope, Carol and Malcom and probably others! (No slight intended!)

Mellon Center would love for White Mountain Gem and Mineral Club to bring another mini-show to Concho Valley next year. Are you interested in making this event possible? It only takes a chairman and a small team to pull it off!

**(Note:** See photos of the event on Extended Page 10 in **Rock Talk.**)



## FIELD TRIP TO ROUND MOUNTAIN-- AGATES AND ROSES

By Dick Turpin

**Field Trip Leader:** Dick Turpin 480-240-0995

**Date:** Saturday, April 26-27, 2025

**Location:** The collecting area is near Duncan, AZ. Driving time from Show Low is about four hours.

**Where and When We Will Meet:** The first meeting point is at the Dollar General store at the "Y" on Highway 60 at 7:15 with a departure time of 7:30. The second meeting point will be in Springerville at 8:00 AM in the McDonalds parking lot.

**Recommended Vehicle:** Any vehicle can make it to the collecting area. The last 12 miles are on a well-maintained gravel road.

**What we will collect:** We will be collecting fire agates and desert roses. Most collecting will be on the surface. Some digging spots are available for the hard-core rockhounds.

**Recommended Things to Take:** Buckets, rock hammer, grabber, digging tools, water, lunch, sunscreen, heavy-duty shoes or boots.

**Cell Phone Service:** The cell phone service at the mine site is likely not very good.



**Directions to the Site:** Maps of the driving directions will be provided at the meeting point.

**Accommodations:** Since it is a long drive some may want to make it a two-day trip. Campsites (no facilities) are available in the collecting area. Hotels are available in Duncan or Safford.

### Reference YouTube Videos:

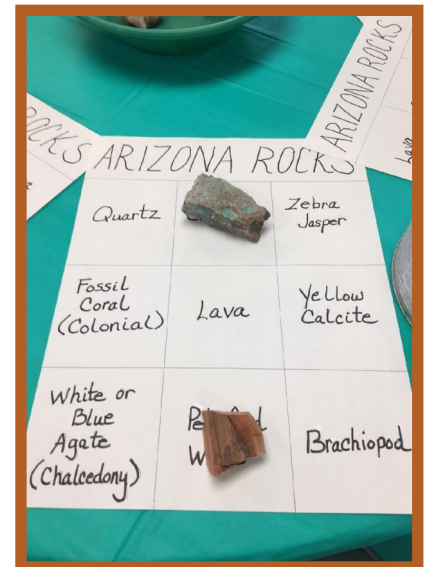
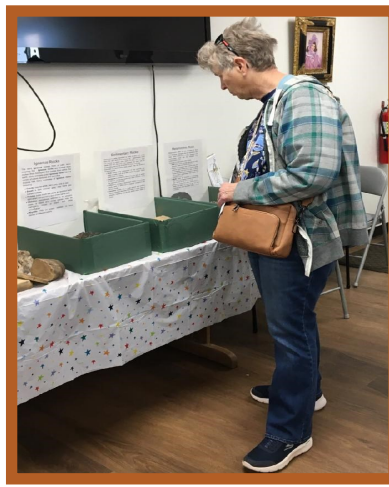
Round Mountain Rockhounding - Dec 25, 2023 - Moto/Meow Adventures

Round Mountain Arizona - Arizona Rockhound Expeditions





# A ROCKIN' GOOD TIME AT THE MELLON MINI-SHOW!





# AROUND AND ABOUT ON THE ROCK & GEM SHOW SCENE

## April 2025

**26-26—MIAMI, ARIZONA:** Show and sale; Gila County Gem & Mineral Society; Bullion Plaza Cultural Center & Museum Lawn, 150 Plaza Circle; Sat. 10-4; No charge; Vendors selling a variety of gems, minerals, jewelry, rocks and more. Raffle, Wheel of Fortune, visit with rockhounds & jewelry makers! Popcorn & beverages are available for purchase. Gila Hog Food Truck will be on site. Interested in being a vendor - 8-foot table space \$10 each; contact Beverly Hawkins, (928) 363-0345; Email: gilagem.shows@gmail.com; Website: GilaGem.org

## May 2025

**3-4—KINGMAN, ARIZONA:** Annual show; Mohave County Gemstoners; Mohave County Fairgrounds, 2600 Fairgrounds Blvd; Sat. 9-5, Sun. 9-4; Free admission and parking; Cabs, slabs, minerals. Door prizes, silent auction, raffles and kids tables. RV setups; contact Daina Sandhop, (425) 268-9983; Email: ddaes1961@hotmail.com; Website: <http://www.gemstoners.org/>

## June 2025

**6-8—PHOENIX, ARIZONA:** Annual show; Mineralogical Society of Arizona; Phoenix Shrine Auditorium, 552 N. 40th St; Fri. 10-6, Sat. 10-6, Sun. 10-4; \$10 Adults / \$5 Veterans, Seniors & Students / Children 12 and under free with paid adult; Show Theme: Copper. The only quality mineral show in the Phoenix area, bringing exceptional minerals to the discerning mineral collector! Show also includes high-quality gemstones, jewelry, and fossils! Museum, Guest and Competitive Mineral Exhibits with Awards.

Contact Cameron Reichert, (602) 334-7599; Email: [marketing@msaaz.org](mailto:marketing@msaaz.org); Website: [www.msaaz.org/phx-heritage-show](http://www.msaaz.org/phx-heritage-show)