

ROCK TALK



White Mountain Gem & Mineral Club
P.O. Box 3504
Show Low, Arizona 85902
www.whitemountain-azrockclub.org
whitemtngmc@gmail.com

Vol. 29, Issue 1
January 2025

PRESIDENT'S LETTER

Happy New Year!

Welcome back, Darren, welcome new member, Julie, and guest, Lorlean. It was super seeing so many at the meeting. Thanks to everyone who participated in Show and Tell. Also thanks to those who shared rock anecdotes for the program. Lots of good stories, information, and laughs.

The format of the meeting has been changed so the fun stuff is up front and the business items follow. Our goal is to shorten the length of the meetings and make it more 'kid' friendly. Feel free to comment and make suggestions.

The Gila County Gem and Mineral Club's annual show is this weekend. We will show our support by heading down to Globe this Saturday, January 11 for our field trip. Meet at the Show Low Chamber's parking lot by 9:00AM. We went last year and a good time was had by all.

The annual calendar is included in this newsletter along with the membership application. Dues are due!

Trivia: Made of the same stuff as clay, shale, and slate, schist is harder. Its colors indicate the pressure and heat when formed. It's a groovy dude known for its flakiness, shimmering coat, and inner flaws. It is also a reliable building material.

Looking forward to a fun and productive year.

Sandra

TREASURER'S REPORT

December Expense

Rock Talk Printing & Postage
Mini Show Expenses
RMFMS Dues & Insurance
Holiday Party Supplies
Historian Print Costs
End of Year Prizes

Upcoming Expense

Rock Talk Printing & Postage
VFW Rent
Storage Unit Rent
CPA Fees
2024 Taxes

Income This Month

Memberships
2025 Show Deposits

BULLETIN BOARD

Happy January Birthday
To:
David Adams
Vicki Barrieau
Ron Cargile
Artie Cervantes
Tom Green
Lurline Ober



Why not join our
Let's Do Lunch Club
Where: Mr. Zeke's—in the
 Ponderosa Village Center,
 Pinetop/Lakeside
When: January 30, 12:00PM
Let's Celebrate our
January Birthdays!!

IN THIS ISSUE

ITEM	PAGE
President's Letter/ Treasurer's Report	1
Notes of Interest/ Important Reminders	2
Club Information	3
Minutes of January Meeting	4
Rock of the Month	5
Mellon Center Update/Reminders	6
Guide to Upcoming Shows	7
Club Schedule for 2025	8
Membership Application for 2025	9
ADDITIONAL PAGES	
Around and About at the Meeting	10

MINI GEM, MINERAL & FOSSIL SHOW

Save the Date:
Saturday March 29
10:00AM -- 3:00PM

WHERE:
Mellon Center
Concho, AZ

Free Admission
 Games, Learning Activities, Prizes, Raffles
 Rock Specimens, Jewelry, etc. For Sale
KIDS OF ALL AGES WELCOME!

Presented by the White Mountain
 Gem & Mineral Club
 Non-Profit 501(c)3 #31450



Members with last names
M-Z will supply the
potluck table at our
February meeting.

Rock Talk Newsletter

Our newsletter is published monthly by the White Mountain Gem & Mineral Club, Inc. Any information or comments members wish to include in the monthly newsletter must be given to the editor at the general membership meeting or call the editor no later than Tuesday following the meeting.

Membership Dues

Membership dues are \$20 for a single membership and \$25 for a couple/family. (\$5 less if you receive newsletter by email.) Dues are paid in January each year along with a completed application form. Memberships initiated in November or later in a given year are also good for the following year.

Meetings

We meet the first Sunday of the month (unless it falls on a holiday) at the VFW Post 9907, 381 North Central Avenue in Show Low. Turn north off the Deuce of Clubs at Burger King. Social half hour at 1:00 PM, meeting starts at 1:30 PM.

ELECTED OFFICERS

Office	Name	Phone	E-Mail
PRESIDENT	Sandra Angelo	(928)537-3726	sandra_angelo@hotmail.com
VICE PRESIDENT	Debbie Trimble	(928)892-5791 (520)400-6527	dtrimble076@aol.com
2ND VICE PRESIDENT	Mike Soboleske	(952)242-6115	Fritso53@gmail.com
SECRETARY	Shelly Applegate	(928)245-4300	shellylynn@gmail.com
TREASURER	Kim Whitley	(928)853-4455	kimwhitley@gmail.com
EDITOR	B.G. Hogarth	(928)532-3043 Cell-(775)397-2312	hogarths@citlink.net
FIELD TRIPS	Dick Turpin	(480)240-0995	
	Rick Palmer	(928)333-5019	palmer57@frontiernet.net

Members at Large

Hope Rubi	(928)228-8851
Terry Pollard	(480)431-0686
Ursula Wilson	(928)532-5703
Carl Hickman	(928)536-3744

Volunteer Positions

Webmaster/Coalition Chair	Aimee Webster	(602)503-8417	afwebster61@gmail.com
Show Chairman	Cathy Cargile	(714)348-9162	skyranch5734@yahoo.com
Assistant Show Chairman	Ursula Wilson	(928)532-5703	
Sunshine	Donna Pollard	480-600-2714	tdpollard@msn.com
Education, Schools	Open		
Greeter/Door Prizes/Raffle	Thelma Gray/Diane Moten		
Auctioneer	Donna and Terry Pollard		
Highway Cleanup	Brookie/ Larry Embry	(928)537-0760	
Bonus Prizes	Sandra Angelo	(928)537-3726	
Historian	Donna Pollard	(480)600-2714	tdpollard@msn.com
Librarian	Rick Palmer	(928)333-5019	palmer57@frontiernet.net
Meeting Room Setup/cleanup	Shelly Applegate	(928)245-4300	shellylynn@gmail.com

Chamber of Commerce Liaisons

Show Low: B.G. Hogarth

Snowflake/Taylor: Karen Hickman

Springerville/Eager: Rick Palmer

Heber/Overgaard: Aimee Webster

WHITE MOUNTAIN GEM & MINERAL CLUB

MEETING MINUTES JANUARY 5, 2025

This month's meeting differed from usual format by trying a different agenda for shorter and more interesting meetings. We will continue to adjust and adapt where needed. Please feel free to inform us of any changes you would like to see. Feedback is appreciated.

The meeting was opened at 1:32PM with the Pledge of Allegiance. Guests and visitors were welcomed. This included Lorlean, who has loved rocks since childhood. We also welcomed Julie Farnsworth, who is a retired science and math teacher. We look forward to seeing our guests again, whenever they can come.

For Show and Tell, Donna presented the club's 2024 Yearbook and invited everybody to browse through it. Carl had some polished fluorescent sodalite which he offered to interested members. He also showed Dugway geodes from Utah, cut in half, and based on the green oil in his saw, contains iron. Judy presented a cute rock tree, a hollow rock (identified as a marine sediment, possibly coral), and a metamorphic rock with garnets in it. Wendy found some asbestos in Globe and put it in water for safe keeping. Other rocks and minerals were added such as mochi marbles which had been found close to her home.

Sandra mentioned that the January 11 field trip would be to the Gila County Gem and Mineral Show in Globe. Meet at the Show Low Chamber of Commerce at 9:00AM and we will leave at 9:15.

Show Chair Cathy Cargile gave a talk about the Concho Mini Gem Show set for March 29 at the Mellon Center in Concho. (See Page 6 in *Rock Talk*.) The club will have ads in the White Mountain Symphony program for the gem show in July. Carl is our Symphony liaison.

Hope Rubi mentioned that "Let's Do Lunch" will meet Thursday January 30 at 12:00PM at Mr. Zeke's in Lakeside.

For the door prize drawing, Carl won a wulfenite sample, Wendy won some geodes, and Donna won a stauberite sample.

Greg won the 50/50 drawing, and for the final drawing, Darren won petrified wood, and Wendy won some mica schist and a Dugway geode.

One correction was mentioned to the December minutes. The meeting date should read January 5 rather than January 6.

Treasurer Kim Whitley presented the club's financial report. We continue to be financially stable. (See Page 1 in *Rock Talk*.)

Show Chair Cathy Cargile mentioned that 16 vendors have signed up and 42 tables sold. We are still waiting for a contract with the Elks Lodge. An email will be sent out to potential vendors for remaining available spaces.

The next club meeting will be February 2 at 1:00PM. There being no further business to discuss, the meeting was adjourned.

Respectfully submitted,

Shelly Applegate, Secretary



ROCK OF THE MONTH

AURICHALCITE



Several years ago, through the efforts of a club member and her relative, our club was able to take a field trip to the inactive Silver King Mine, a formerly very productive mine that traces its existence to 1870, during the Apache Wars. Silver ore is associated with ores of copper, zinc, and gold, but silver was the main production of the mine. Aurichalcite has been called the "bronze ore" because bronze is an alloy of copper, tin, and other elements including zinc.

Located near Superior, Arizona, the mine produced an estimated \$42 million worth of silver ore between 1875 and 1900. (Wikipedia, the free encyclopedia)

Our members collected many specimens from the old mine site, including an abundance of a light blue mineral associated with the ore(s). Not blue/green enough to be chrysocolla, too light blue to be azurite, the true name of the mineral was not verified at the time. This light blue mineral has been identified as aurichalcite, a hydrous zinc, copper, carbonate.

Aurichalcite has a chemical formula of $(Zn, Cu^{+2})(CO_3)_2(OH)_6$, hardness (H.) of 1 - 2, density (specific gravity S.G.) of 3.6 - 4.3, and a silky to pearly luster. The streak on unglazed porcelain is a light blue to white. Aurichalcite has perfect cleavage, and fractures with a micaceous, non-brittle tenacity. Dilute hydrochloric acid (HCl), causes this mineral to effervesce (release carbon dioxide bubbles).



Associated minerals include limonite, gray hemimorphite, smithsonite, roasite, azurite and malachite. There are few similar minerals, rosasite is harder and more light green rather than light blue, and serpierite is harder and brittle.

Aurichalcite has an orthorhombic (three axes perpendicular to each other of diverse lengths), forming lamellar, thin, scaly, rectangular sheets, acicular (needle-like) crystals often in tufts, or radiating fibrous structures, all very small. Oxidation zones of copper, zinc and silver ore veins produce secondary minerals such as aurichalcite, where circulating carbonate-rich solutions then deposit them.

Fine, isolated crystal specimens are rare: Larium, Greece; Chessy, France; Tsumeb, Namibia, Mapimi; Mexico, Scotland, and Romania; Stockton, Utah; and Kelly, New Mexico are a few of the more famous sites.

Locally, in Arizona, the closed Silver King Mine, Superior, mine dumps in the Mammoth area, NE Tucson, the Patagonia Mountains, NE Nogales, the Dragoon Mountains, Gleeson, and Bisbee are all possible sites of aurichalcite.

Of interest to collectors and scientists, the color and crystal habit are usually enough to identify the mineral. The small crystal size or lamellar structure of most specimens make most normal testing difficult. Having a specimen of aurichalcite is an interesting addition to any collection.



Do you have some
excess rocks you
don't need anymore?

Want to make sure they
get a good home?

And make some
extra cash while
you are at it?



THEN SATURDAY MARCH 29
10:00AM to 3:00PM
IS YOUR OPPORTUNITY!!!

By Cathy Cargile

Our "mini" gem show on March 29th at the Mellon Center in Concho Valley is a great opportunity for you as a WMGMC member to have a FREE round vendor table. Each table will have a tablecloth and two chairs. You do not need loads of items, and they do not need to be fancy or professionally displayed. Of course, if they already are, all the better! So far, we have six tables accounted for but there are six more available. Please let Cathy know by text or phone call right away if you'd like a table. Two club members may share a table. We hope some of you will have fossils, crystals, jewelry, rock specimens, etc. in collections or in yards that you would like to sell or even give to the guests at the show.

At the February meeting there will be promo available for club members to post or hand out anywhere from Lakeside to Pinedale, Linden to Snowflake, Concho to Springerville and anywhere else in our broad area.

We will have several displays and educational activities spread around the room. If you have an idea for an activity that children or adults would potentially enjoy and learn, and that you'd like to have on your table, please let us know. The longer people remain at your table, the more they become engaged, and the more likely your items will sell.

The current plan is to have two food trucks on site for ease of obtaining lunch.

If you have ideas or questions, please call or text Cathy 714 348-9162.

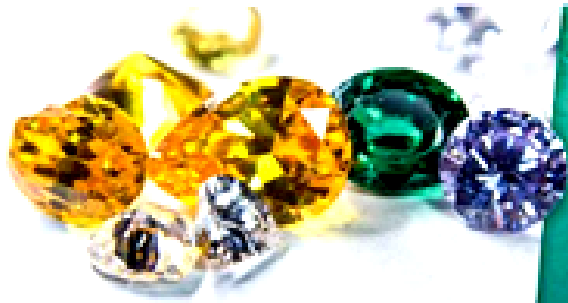
JUST SO'S YOU KNOW

A couple of reminders from your editor ---

1. DON'T FORGET that this month's field trip is THIS SATURDAY, going to the annual show in Globe.
2. Once again I want to remind you all that I am always on the lookout for interesting articles for *Rock Talk*. I would LOVE to be flooded with articles relating to our shared interest in nature; rocks, fossils, you name it! This club is blessed with a number of artists in different fields. It would be great to have you share this with the rest of us. Don't worry about your writing abilities; that's what an editor is for! Or maybe you work with jewelry, and have some techniques you would like to share. Think about it! I'm waiting!!

Clarkdale Rocks Gem & Mineral Show

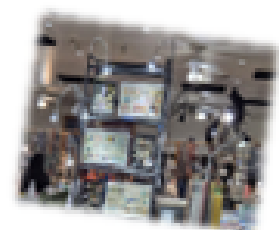
February 21-23, 2025
Clark Memorial Clubhouse
Auditorium
19 N Ninth St -- Clarkdale, AZ



DESERT GARDENS ANNUAL ROCK, GEM & MINERAL SHOW

JAN 1 - FEB 28 • EXIT 17 - QUARTZSITE

OTHER UPCOMING SHOWS



ARIZONA

March 1-2, 2025—ANTHEM, ARIZONA: Annual show; Daisy Mountain Rock and Mineral Club; Anthem School, 41020 N Freedom Way; Sat. 9-5, Sun. 10-4; Adults \$5, Seniors, Vets and Students \$4, Children under 12 free; Vendors Included: Rocks, Minerals, Crystals, Slabs, Jewelry, Beads. Kids Corner, Raffle; contact Tiffany Poetsch; Email: dmrclub@gmail.com; Website: www.dmrclub.com

NEW MEXICO

March 14-16, 2025—ALBUQUERQUE, NEW MEXICO: Annual show; Abq. Gem & Mineral Club; Expo NM State Fairgrounds, 300 San Pedro NE; Fri. 10-6, Sat. 10-6, Sun. 10-5; Fri \$2, Sat & Sun \$5, kids under 13 are free; 50 dealers, mineral specimens, rough, slabs, jewelry, cabochons, beads, fossils, petrified wood, tools, equipment. Door prizes, silent auctions, junior table, displays; contact Roy McKinney, (505) 715-1038; Email: show-chair@agmc.info; Website: www.agmc.info

WHITE MOUNTAIN GEM & MINERAL CLUB CALENDAR OF EVENTS 2025

**TIPS FOR FIELD TRIPS WANTED!
PLEASE LET US KNOW OF ANY PLACES THAT
WOULD BE GREAT FOR OUR OUTINGS.**

MONTH	MEETING DATE	FIELD TRIP DATE	ACTIVITIES
JANUARY	5	11	Globe, Gila County Show
FEBRUARY	2	22	Bullion Center, Miami
MARCH	2	22	3/29—Mini Show, Concho
APRIL	6	26	4/06—Geologist Day
MAY	4	24	BLM land, Concho 5/17—Highway Cleanup
JUNE	1	21	
JULY	6		7/11—DaVinci Day Medieval Mayhem
ANNUAL SHOW: July 17—20 Show Low Elks Lodge			
August	3	23	
September	7	27	9/16—Collect Rocks Day 9/20—Highway Cleanup
October	5	25	Trunk or Treat 10/12—Harvest Fest
November	2	22	
December	7		Holiday Party



MEMBERSHIP APPLICATION

PO BOX 3504
SHOW LOW, AZ 85902

DATE: _____ NEW _____ RENEWAL _____

Printed Name(s): _____

Phone(s): _____ Brass Name Badges (\$5 each) _____

Mailing Address: _____ City: _____ Zip: _____

E-mail Address(s): _____

Type of Membership: Single (\$20) _____ Couple/Family (\$25) _____
(\$5 deduction if getting newsletter by E-mail)

Please send club newsletter by: E-mail _____ US Mail _____

May we have birthdays? (Month Only) _____

List any junior members you would like to sponsor (No added fee):

1. _____ Age: _____ 2. _____ Age: _____

3. _____ Age: _____ 4. _____ Age: _____

Signatures: _____ Date: _____

Seasonal members, please list alternate address and months of residency:

Address: _____ City: _____ Zip: _____

Months: _____ Phone: _____

AROUND AND ABOUT IN THE MEETING ROOM

